

## Crouch welcomes low-rise planning code

**Parliamentary Secretary for the Central Coast Mr Adam Crouch has welcomed the introduction of a new Low Rise Housing Diversity Code on the Central Coast.**

He said the purpose of the Code was to improve housing affordability as well as encourage more housing diversity.

The Central Coast was one of 46 Local Government Areas which had the Code implemented on July 1.

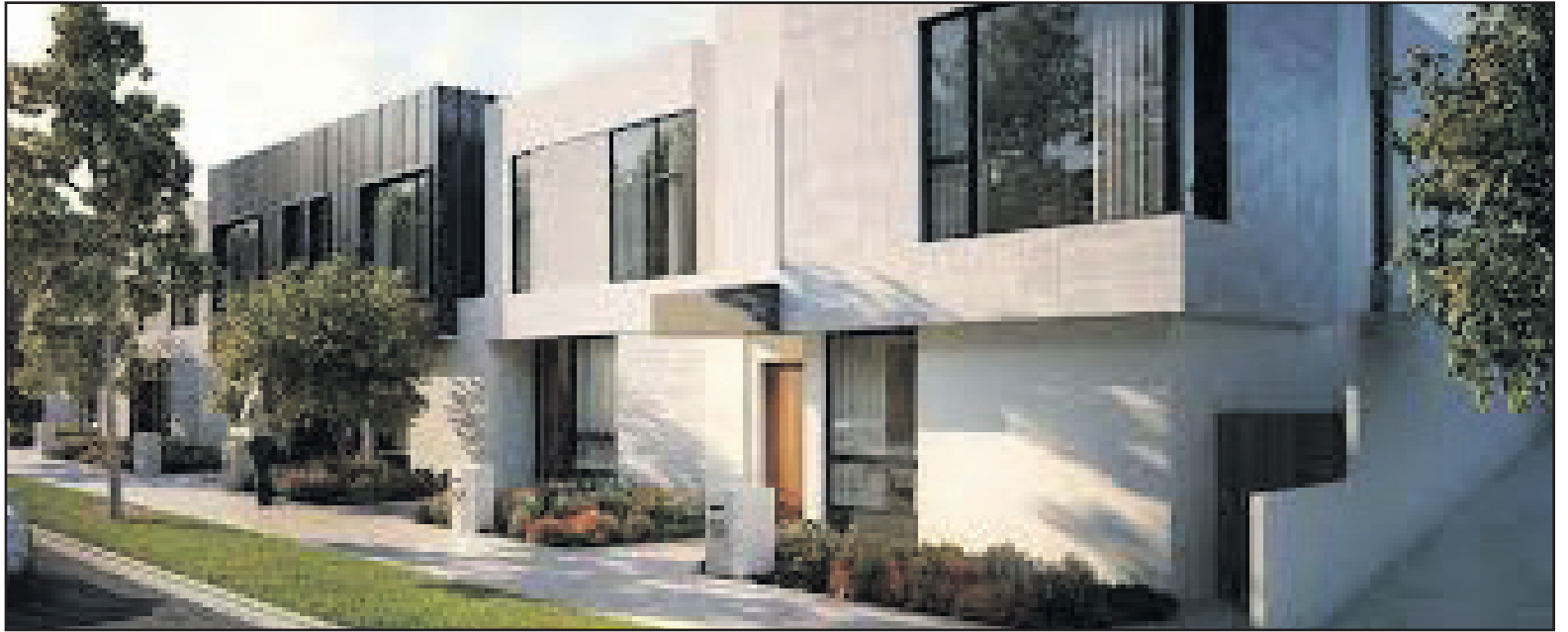
"The Code only applies where a council has already zoned land for this type of development," Mr Crouch said.

"Every council in NSW has had more than two years to tailor the Code to their communities."

However, the State Opposition is calling for the Code to be scrapped or heavily amended.

"The Code sets aside Council planning controls and allows more intense, unplanned development," said Shadow Minister for Local Government Mr Greg Warren.

"Under the Code, terrace houses, dual occupancy and manor houses will be fast tracked



as 'complying developments' in as little as 20 days.

"These do not require a full development application to a council, only a complying development certificate issued by a certifier.

"This process removes Council oversight and community input.

"The Code has been described

by many councils as over-development by stealth and has the potential to overcrowd suburban streets across the state."

Local Government NSW, an association of councils, said it made it harder for councils to uphold community confidence in an orderly development system that supported the local character

of their areas.

Association president Ms Linda Scott said the Government should allow councils to retain the power to decide on individual developments, ensuring the right balance between the need for different forms and size of housing that support existing amenity and local community expectations.

**SOURCE:**

Media statement, 22 Jul 2020  
Adam Crouch, Parliamentary Secretary for the Central Coast  
Media release, 7 Jul 2020  
Greg Warren, Shadow Minister for Local Government  
Media release, 1 Jul 2020  
Linda Scott, Local Government NSW

## Councillors give themselves a pay rise

**Central Coast councillors have voted eight to six to give themselves a pay rise at the July 13 council meeting.**

The pay rise was supported by most Labor councillors as well as independents Cr Jane Smith, Cr Chris Holstein and Cr Louise Greenaway.

Cr Greg Best, Cr Bruce McLachlan and Liberal Cr Jilly Pilon, Cr Rebecca Gale and Cr Chris Burke voted against it.

Labor councillor Cr Doug Vincent also voted against the pay rise and one Liberal councillor, Cr Troy Marquart, was not at the meeting.

A councillor's remuneration now rises from \$30,410 per year to \$32,040.

The Mayoral fee moves from \$88,600 to \$99,800.

The full increase means an adjustment to the council budget of an additional \$35,650.

However, the matter will be discussed again at the next council meeting after Cr Best gave notice he would move a rescission motion.

Cr McLachlan said he would support the rescission motion.

Cr Best said: "This will give all concerned another opportunity to reconsider this totally out-of-touch self-awarded pay rise.

"This Council recently raised



rates by \$4.4M after losing \$41M last financial year and now the same people can somehow justify a pay rise with the mayor getting a further \$11,000 bringing her total remuneration to \$131,000 plus a luxury car and expenses.

"If this were a private corporation working on real KPIs and performance criteria, the administrators would have been called long ago.

"Simply put, our community is really struggling under the weight of Covid-19, struggling to make ends meet and struggling to find a job, let alone to get a pay rise.

"This just says it all, an absolute

slap in the face of our ratepayers by an out of touch Council, clearly spending someone else's money."

Gosford West ward's Cr Holstein, whose ward covers the Peninsula, defended the increase.

"This remuneration argument has been going on for 30 years and one reason council can't attract a wide range of councillors is because the pay is woeful," he said.

"This is a reclassification of the work we do.

"It works out about \$30 a week.

"It is the sixth largest council in Australia and one of the biggest financially in Australia."

He suggested it was quite easy to see from attendance records that some councillors found it hard to get to all meetings because of other commitments.

He said his diary showed in one year he had attended more than 130 meetings, more than 80 events and more than 60 video meetings.

The pay increase became available because the Local Government Remuneration Board had reclassified council.

While councillors did not have to adopt the maximum amount, a report from council staff recommended that it was

appropriate for a council the size of the Central Coast to remunerate councillors at the higher level.

"While this represents an increase, this needs to be considered in the light of the fact that Council has long held that it should be in a different category," the report said.

The council is now the only council in a new category of Major Strategic Area, with a remuneration range the same as for a Major Regional City.

**SOURCE:**

Central Coast Council agenda 3.4 and 6.1, 13 and 27 Jul 2020



# Peninsula News

COMMUNITY ACCESS

Peninsula News is a fortnightly community newspaper owned by The Peninsula's Own News Service Inc., an incorporated, non-profit association.

Its aims include providing a viable, non-partisan news medium and forum exclusively for the Peninsula and developing a sense of community on the Peninsula.

See [www.peninsulanews.info](http://www.peninsulanews.info) for all editions published

**Editor:** Mark Snell

[editor@peninsula.news](mailto:editor@peninsula.news)

**Commercial Operator:** Ross Barry

**CEO:** Cec Bucello, for Central Coast Newspapers Pty Ltd

**Design & Production:**

Justin Stanley, Lucillia Eljuga

**Journalists:** Sue Murray, Haakon Barry, Marilyn Vale

**Head of Distribution:** Anthony Wagstaff

**NEXT EDITION: PENINSULA NEWS 500**

**Deadline:** August 6 **Publication date:** August 10

**Email:** [editorial@centralcoastnews.net](mailto:editorial@centralcoastnews.net) **Ph:** 4325 7369

**Peninsula News focusses on post codes 2256 and 2257**

**Contributions**

Letterstotheeditorandothercontributionsarewelcomedandshouldbeaddressedto: Peninsula News PO Box 1056, Gosford 2250. Contributions should be in Word format sent via email to: [editorial@centralcoastnews.net](mailto:editorial@centralcoastnews.net), on disks or by handwritten letter if these facilities are not available to you. Contributions must include the date, your name, address and phone numbers. Name and Suburb will be published. Anonymous contributions will not be included. Submissions may be published in edited form.

All accepted contributions also appear on our website.

Legal responsibility for editing, printing and publishing of editorial content in Peninsula News

is taken by Mark Snell of Woy Woy, for Woy Woy Community Media Association Inc

**Central Coast Newspapers Pty Ltd is the commercial operator of Peninsula News**

ISSN 1839-9029 - Print Post Approved - 100002922

Printed by Spotpress Pty Ltd Marrickville

## Editorial policy

**The newspaper's editorial policy reflects a desire to reinforce the Peninsula's sense of community.**

To qualify for publication, articles must have specific relevance to the Peninsula. For example, they must be about activities or events happening on the Peninsula or be organised by or involving Peninsula people.

The newspaper is not regional or national in nature, so regional or national issues will not be canvassed except as they affect the Peninsula.

Regional sports will only be covered from the perspective of Peninsula clubs. Regional plans will only be aired in the context of their ramifications for the Peninsula.

Peninsula News aims to be inclusive of as much of the Peninsula community as possible.

## Readability

**To ensure that the newspaper serves its purpose, it must be readable and represent the interests and activities of the community in its content.**

Contributions to the paper are edited to consistent standards of readability. Guidelines are available for intending contributors.

All items will be dated. They must contain the name of the author to whom the contribution may be attributed, with their first name spelt out, along with their suburb or organisation. Anonymous contributions will not be accepted.

## Forum letters

**The Forum section provides the opportunity for readers to express their views on any aspect of Peninsula community life, with the aim of reflecting the community's diversity of opinion.**

Nevertheless, letters may be edited for readability, including for length, spelling and grammar, and to avoid legal liability on the part of the newspaper, or they may be declined altogether.

Contributors are asked to keep their contributions to the matter at hand, and to focus on the issues and not abuse or insult others.

Other than in the case of holding public figures to account, criticism of others (as opposed to criticism of particular opinions) is unlikely to be published in the interests of facilitating the expression of a diversity of views.

All letter writers need to supply name, address and contact details. Only name and suburb will be published.

Contributors who do not wish the wording of their letter to be changed at all should make a note to this effect when submitting their letter. In some cases, this may result in the letter not being published.

## Source lines

**Peninsula News includes "source lines" at the end of each article which aim to provide readers with information about where and how we came across the information, so that they might judge for themselves the veracity of what they are reading.**

It should not be assumed that the article is a verbatim reproduction of the source. Similarly, it should not be assumed that any reporter listed is necessarily responsible for writing the whole news item. Source lines are not by-lines.

Often articles come from a number of sources. They are edited for readability and reader interest and given different headings, and consequently can be expressed quite differently from the source material.

Peninsula News usually receives its information in three ways: It is sent to us by someone wanting to promote their activities; it is sent to us in response to our inquiries; or it comes from a newsletter or other document to which we have access.

Sometimes we may interview a person or report what they said at a meeting.

The following descriptions are used:

**Media Release** - unsolicited contributions. **Media Statement** - sent in response to our questions. **Website** or **Social Media** - information published online. **Newsletter** or **Report** - published in print or online. **Interview** or **Meeting** - statements recorded by a reporter.

Forum contributions may be: **Email** if sent electronically and **Letter** if written on paper.

# Peninsula sees 46mm rainfall in three weeks

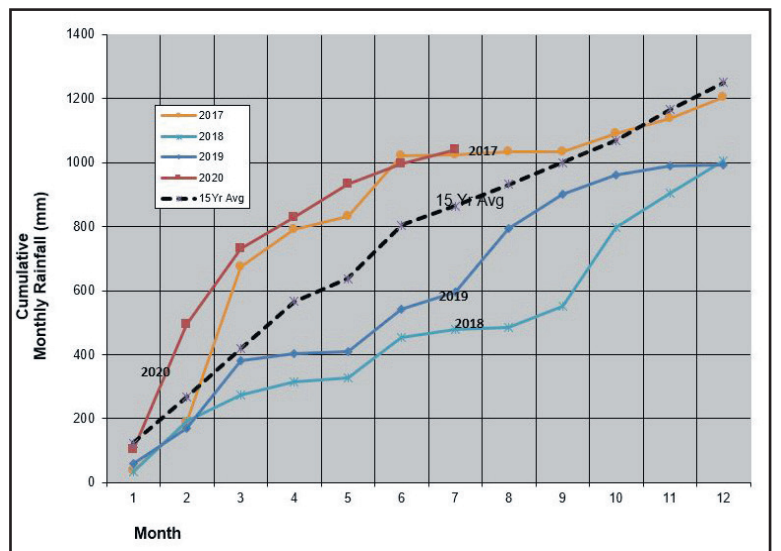
A total of 36.1mm of rain has fallen on the Peninsula in the fortnight to Friday, July 24, bringing the total for the month to 46.2mm, according to figures supplied by Mr Jim Morrison of Umina.

The monthly average rainfall for July is 60mm.

With one week until the end of the month, the total was 29 per cent below the average.

The cumulative total rainfall for the year was 1038.8mm, which is 20.1 per cent above the average figure at the end of July of 865mm.

**Spreadsheet, 24 Jul 2020**  
**Jim Morrison, Umina**



# YOUR CHANCE TO WIN

**Peninsula News would like to offer three lucky readers the chance to win a family pass to Taronga Zoo Sydney.**

Taronga is celebrating the opening of its brand new state-of-the-art African Savannah precinct just in time for the winter school holidays.

The new experience connects guests with a beautiful waterhole where Giraffe and Zebra drink together, Fennec Foxes and Meerkats play and for the first time in five years for Taronga, where Lions rule as kings of the savannah.

The African Savannah precinct is radically different to any other Australian zoo experience and takes guests on a journey to Africa while also educating them on the conservation challenges facing iconic species and some of the solutions that are supporting



communities and wildlife in Northern Kenya.

For your chance to win write your full name, address and contact number on the back of an envelope and mail it to Peninsula News, Taronga Zoo Competition,

PO Box 1056, Gosford 2250, before 5pm on August 5.

The winners of the Drom competition were Gai Harris from Umina and Anita Yates from Woy Woy.

Prize winners may be required to pick up their prize from our Gosford office. Entries may be passed on to prize providers for marketing purposes.

## Get the most out of your advertising dollar



# Central Coast NEWSPAPERS

Advertise in a Central Coast Newspaper for maximum exposure at a realistic price. Multiple booking and multiple publication discounts apply to all display advertisements. Enjoy the benefits of being in a well-read publication with relevant news content. Contact us now for more information or visit our website.



**Office: Level 2, 86-88 Mann St, Gosford - Phone: 4325 7369**

**Mail: PO Box 1056, Gosford 2250 - [editorial@centralcoastnews.net](mailto:editorial@centralcoastnews.net)**

**[www.coastcommunitynews.com.au](http://www.coastcommunitynews.com.au)**





The historic significance of these hoop pines at Memorial Park, Woy Woy, make them likely candidates for the Significant Tree Register

## Nomination fee for tree register is abolished

**Central Coast councillors have voted to abolish a \$250 fee for nominating trees for inclusion on the Significant Tree Register just weeks after approving it.**

The \$250 fee was included in a raft of fees and charges approved for 2020-21 on June 29.

Councillors also voted that criteria for listing a tree be expanded to include cultural significance along with heritage

and historical value.

They requested that opportunities for incorporating the Significant Tree Register in Council's Local Planning instruments be investigated, to provide long-term protection to the trees listed on the register.

Speaking in favour of the change at the Council's July 13 meeting, Cr Louise Greenaway said nominating a tree was a community service of no benefit to the nominator.

She said other council areas had registers which celebrated trees for their horticultural, aesthetic, indigenous and heritage value, with many of them providing interactive maps showing trees of significance and heritage trails incorporating trees.

Cr Greenaway said the register had been discussed since August, 2019, when it was resolved to expand Gosford Council's Significant Tree Register to include trees from the former Wyong

council area.

"Nearly a year later we are yet to have a process by which people can nominate trees from the former Wyong Shire."

The decision followed an address from environmentalist Ms Joy Cooper in the public forum prior to the meeting.

Ms Cooper said the register maintained by the former Gosford Council had been valued by the community and easily accessible, with no fee required to nominate a

tree.

"Since the amalgamation I have observed the register having less and less visibility and even an attempt by staff ... to persuade councillors to not even have a register," she said.

"Our region should be showing off, highlighting and differentiating our uniqueness and beauty."

**SOURCE:**  
Central Coast Council  
agenda 6.3, 13 Jul 2020

**DESIGNER COMFORT**  
**4324 3639**

**NOW LOCATED AT SHOP 4A "PRIME WEST"  
CENTRE, 356 MANNS RD WEST GOSFORD**  
OPPOSITE STOCKYARD PLACE

**L A Z B O Y**  
*Live life Comfortably.*

**IMG**  
COMFORT

**NORDIC STUDIO**



Brando Lift Chair  
Fabric from **\$1199**



Jade Recliner - with lift option  
Fabric from **\$1199**



Zeus Lift Fabric from **\$2290**  
**185kg capacity!**



Loki Recliner  
Leather from **\$999**



Harbortown Lift Chair  
Fabric from **\$999**



stor Lift Dual Motor Fabric  
from **\$1999**



Devon Lift Fabric  
from **\$1399**



Ascot Lift Fabric  
from **\$1099**

**LIMITED OFFER \$1599** Save \$1380  
NORDIC 60 LARGE CHAIR AND OTTOMAN



PRIME BLACK  
LEATHER  
OAK  
STAR WOOD



PRIME LATTE  
LEATHER  
DARK BROWN  
STAR WOOD



PRIME LIGHT  
LEATHER  
LIGHT ASH  
STAR WOOD



PRIME GREY  
LEATHER  
OAK  
STAR WOOD

**SALE**

**ALL STOCK REDUCED BY 25% to 50%  
EVERYTHING REDUCED!!!**



## Seals sighted in Woy Woy Bay

Seals have been sighted in Woy Woy Bay in recent weeks, according to the Central Coast Dolphin Project.

Project co-ordinator Mr Ronny Ling said the group had spotted bachelor seals exploring the Brisbane Waters.

He said the Project had been monitoring several seals for quite a while and sightings had been recorded in recent weeks at Point Clare, Tascott, Koolewong, Avoca and Copacabana, as well as Woy Woy Bay.

"These seals are part of a bachelor seal colony at Barranjoey which sometimes venture into Brisbane Water," he said.

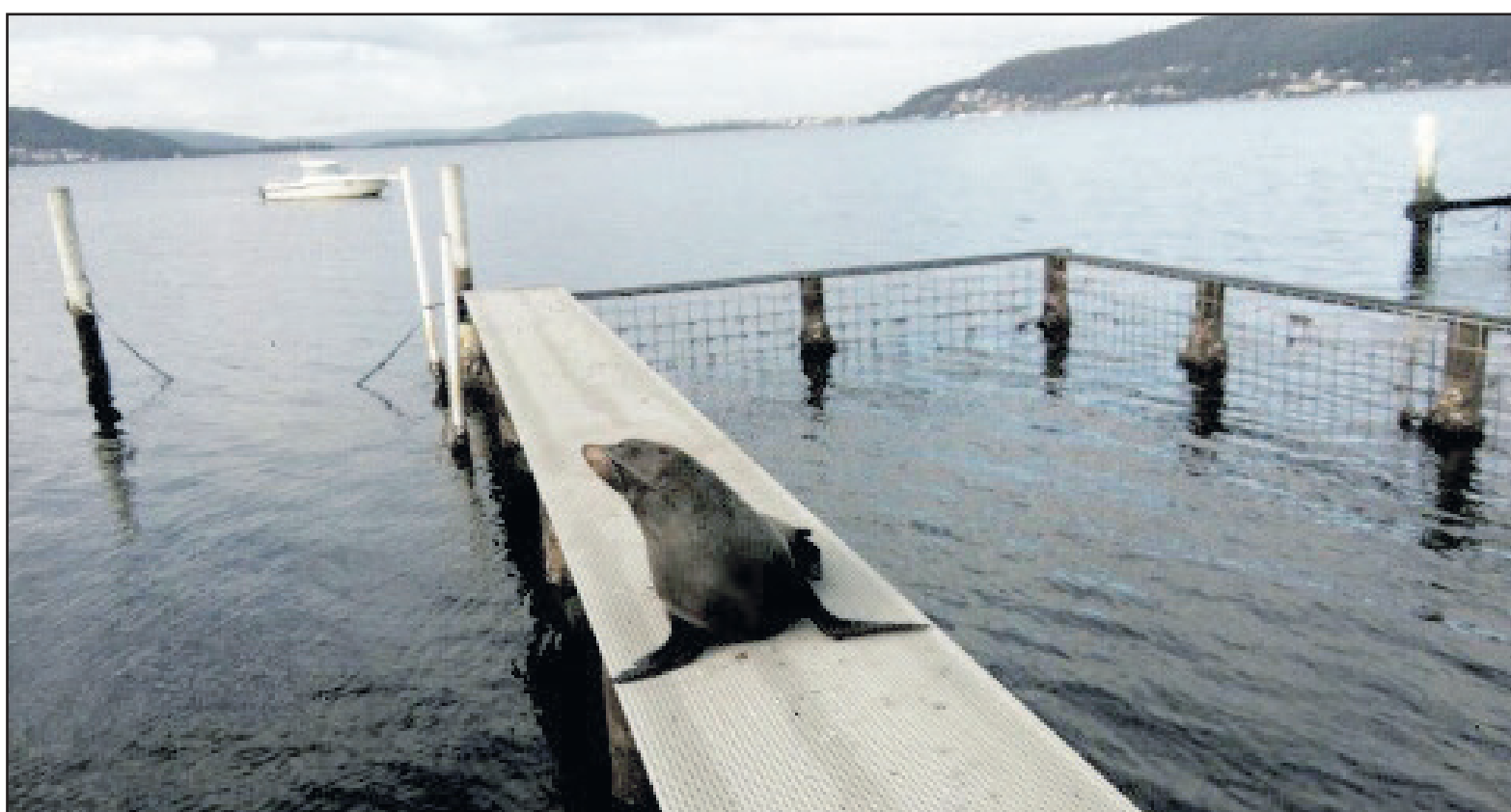
"The Barranjoey colony consists of up to 15 long-nosed fur seals.

"These are almost sexually-mature male seals known as bachelors and they explore and extend territories.

"Sometimes they are joined by smaller seals who are around five years old and are serving an apprenticeship as they learn to hunt fish, squid and penguins.

"While they are based at Barranjoey, the seals will often go exploring to check out what's to eat and we are hoping that within seven to 10 years we may start to get females there as well.

"There is just one breeding colony in NSW at the moment, at Montague Island off Narooma, but



*Just relaxing on this jetty at Point Clare*

the bachelor colonies are setting up all along the coast claiming lands for possible future breeding."

Mr Ling said some seals followed the fish out of area, but monitoring of the Barranjoey colony showed that many were returning.

"This is a great sign. They are

setting up a new residence," he said.

Mr Ling said it was important never to try to touch, pat or feed the seals.

"These are wild animals and can be unpredictable," he said.

"You shouldn't go closer than 40 metres, but it's perfectly safe to

enjoy them from a distance."

He said the mammals were most likely to be spotted sunning themselves on rocks or jetties in daylight hour.

"They are nocturnal feeders," he said.

"They party all night and sleep all day – much like teenage boys."

Photo: Ian Allotta

The Central Coast Dolphin Project encouraged residents to send in any pictures they might take of the seals to help with the monitoring process.

SOURCE:

Interview (Haakon Barry),  
15 July 2020,  
Ronnie Ling, Central Coast  
Dolphin Project.



### ***Peace of mind with pre-paid funerals.***

By arranging the finances and details of a funeral today, you relieve the burden for your loved ones tomorrow. Removing the financial pressure can be a way to look after your family when they need support most.

By pre-planning a funeral with Creightons you can feel confident that you have selected the most established, trusted and respected funeral service.

Assisting families for over 170 years.

*Arrange and pay for a funeral today.*

**Central Coast 4324 1533 | Sydney Region 9488 9265 | Hunter Region 4991 5556**

**[www.creightonsfuneralservice.com.au](http://www.creightonsfuneralservice.com.au)**



# Ferry service disrupted

**The Palm Beach ferry service was disrupted for three days due to heavy seas.**

Fantasea Palm Beach Ferries announced through social media on Monday, July 13, that the ferry would be diverted to Patonga due to the weather predicted to accompany the East Coast Low over the following three days, through to Thursday, July 16.

“Our Ettalong and Wagstaffe service has been diverted to Patonga due to heavy three to six metre swells for the next three days.

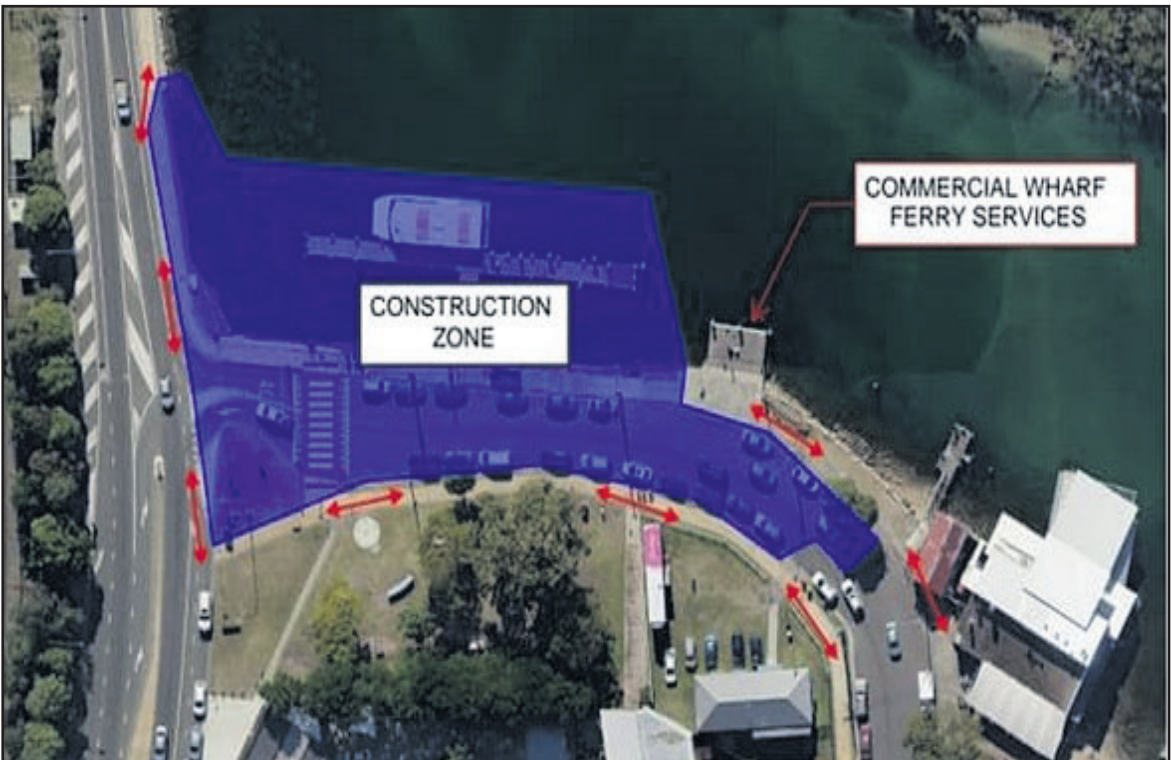
“We apologise for any inconvenience this diversion may cause.”

A “service disruption notification” on the company’s website stated the diversion was “due to inclement sea conditions: forecasted: strong SSW 30 to 50km/h strong to near gale winds and SE three to six metre rough swells”.

“This exceeds the company’s safe-operating guidelines for the service.”

The announcement said services would run to full schedule, but warned of “possible full cancellations of all services should conditions worsen and safety to passengers, crew and vessels be compromised.”

**Social media, 13 Jul 2020**  
**Fantasea Palm Beach Ferries**



# Ferry to use commercial wharf in Woy Woy

**Woy Woy Wharf will be closed from Monday, August 3, to late in December while the wharf upgrade takes place.**

Central Coast Ferries has announced that during that time their ferry services will be using the commercial wharf which is adjacent the Woy Woy public

wharf.

From August 3, mooring of boats and vessels to the commercial wharf is prohibited except for the purpose of loading and unloading people and goods.

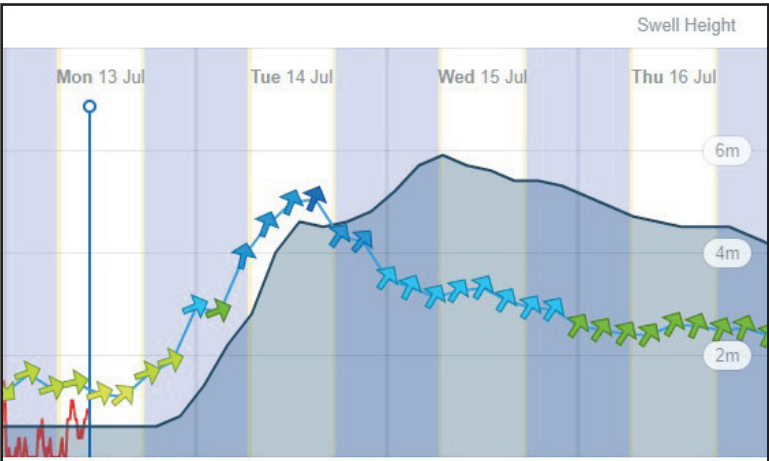
Ferry services have priority access to the commercial wharf, and private boat owners must stay clear of the wharf during ferry

times.

Work started on the \$5.3 million public wharf upgrade in April.

The completed project will have a floating pontoon that will rise and fall with the tides and ensure access for vessels in most tides and weather conditions.

**SOURCE**  
**Social media, 22 Jul 2020**  
**Central Coast Ferries**



# WOY WOY OVAL SCOREBOARD

**DELIVERED**

**\$80,000 for a new scoreboard in addition to the Federal Government’s \$3.5 million redevelopment of Woy Woy Oval.**

**Delivering a state of the art facility for local events on the Peninsula.**

## LUCY WICKS MP

FEDERAL MEMBER FOR ROBERTSON

Level 3, 69 Central Coast Highway, West Gosford NSW 2250

02 4322 2400 lucy.wicks.mp@aph.gov.au

lucywicksmpp.com LucyWicksMP

Authorised by Lucy Wicks MP, Liberal Party of Australia, Level 3, 69 Central Coast Hwy, West Gosford NSW 2250.



## Council includes 21 playgrounds in draft strategy

**Central Coast Council has identified 21 playgrounds, or "playspaces" as it calls them, on the Peninsula in its draft Playspace Strategy.**

The draft Playspace Strategy proposes that all playgrounds would have natural shade, seating, signage and paths.

No playgrounds would have lighting.

Of the 21 playgrounds on the Peninsula, 17 are defined as local, two as "nature-alternative", one as district and one as regional.

Seven local playgrounds are in Woy Woy: Trafalgar Ave Playground, Pelican Park, Gurdon Reserve, Wallaby Playground, Nambucca Dr Playground, Woy Woy Lions Park and Stoney Park.

Five local playgrounds are in Umina: Brisbane Ave Playground, Vernon Park, Lentara Rd Playground, WL Lloyd Park and Cowper Rd Playground.

Two local playgrounds are in

each of Patonga and Pearl Beach: Patonga Caravan and Camping Area, Patonga Beach Foreshore, Pearl Beach Tennis Courts and Pearl Beach Pde Playground.

One local playground is at Ettalong Oval.

The "nature-alternative" playgrounds are the Australia Ave Playground and Umina Tennis Courts.

The district playground is Ettalong Beach Waterfront Reserve.

The regional playground is the Umina Recreation Area.

District and regional playgrounds would have shade shelters, picnic shelters and drinking water.

Regional playgrounds would have parking and be co-located with toilet blocks or have their own.

The strategy states that the classification of playgrounds was "a hierarchy of playspaces which serve different residential catchments and have different

usage capacity".

"Local playspaces make up 80 per cent of the playspace network and are located within local parks within walking distance.

"They provide play equipment for the local community and visitors tend to stay for one to two hours.

"District playspaces are medium size playspaces which provide for the Social Plan District but may also serve the region with play equipment catering to multiple age groups.

"They are accessible by bicycle, car, and bus and are co-located with other facilities such as parking, toilets, shared paths or sports facilities to maximize use and are inclusive.

"Visitors tend to stay longer than two hours.

"Regional playspaces

are currently the largest of Council's playspace network which attract and serve people across the whole region and beyond.

"They typically have the greatest capacity and variety of equipment, may include specialist or iconic facilities and aim to improve inclusion, activation, and social engagement across all ages, abilities and cultural groups.

"They can be co-located with other facilities such as community centres and sporting facilities to maximise opportunities.

"Visitors tend to stay half a day as they incorporate a wide array of complimentary picnic facilities, car parking and associated activities such as half-courts, skate areas and bike paths."

The Strategy describes nature-alternative playgrounds as "creative, low maintenance, nature-based or innovative alternatives developed in local parks where traditional equipment has been permanently removed".

"The site may be re-purposed to include structural components such as 'learn-to-ride' paths, robust and interactive elements or outdoor gyms, fitness equipment or a combination of elements."

Public comment about the Strategy will be received until August 15 through an online submission form, be email to ask@centralcoast.nsw.gov.au, or by post to PO Box 21, Gosford NSW 2250.

Website, 15 Jul 2020  
Draft Playspace Strategy,  
Central Coast Council

## Activities start again at women's health centre

**A women's health centre has started some activities in a Covid-19 friendly manner and is looking for a new centre coordinator.**

The Peninsula Women's Health Centre at Woy Woy will be offering some small groups with social distancing observed, according to

its latest newsletter.

"You will be asked to have your temperature taken and to use hand sanitiser on arrival and we encourage the use of a mask should you feel comfortable to do so," said Central Coast Community Women's Health Centre chief executive Ms Theresa Mason.

"We are committed to safe client access and infection control to help protect you and our community," she said.

The centre is running a Shark Cage group, Wednesday morning Gentle Yoga and a virtual Circle of Security Parenting Program.

Its Walking Group meets on

Fridays and massage is also available.

Programs are run in line with school terms.

The newsletter also noted that the centre has been looking for a new coordinator.

"This is an opportunity for a dynamic woman to coordinate

the services, programs and administration of the Peninsula Women's Health Centre."

The position has been advertised via ethicaljobs.com.au.

**SOURCE:**  
Newsletter, 22 Jul 2020  
Theresa Mason, Central Coast  
Community Women's Health Centre

# ASBESTOS COMPENSATION

**For more than 25 years, Alex Stuart, solicitor, has successfully represented hundreds of people suffering:**

# MESOTHELIOMA & ASBESTOSIS

**Contact Alex Stuart of Stuart Lawyers for an obligation-free case assessment.**

**Home visits available, or you can see us in our Sydney office. Alternatively, given the current impact of the Coronavirus, we offer telephone assessments and "virtual" visits.**

**FREECALL: 1800 001 135 or (02) 8920 8446**

**Specialising in asbestos litigation**

**www.stuartlawyers.com.au**



# COME IN FOR A FREE ASSESSMENT

## COSMETIC DENTISTRY

- DENTAL IMPLANTS
- SINGLE TOOTH REPLACEMENT
- FULL MOUTH REHABILITATION  
OVER 4-6 IMPLANTS
- IMPLANT SUPPORTED DENTURES

**WE ACCEPT HOSPITAL VOUCHERS AND VETERAN AFFAIRS**

# NO GAP

Exam and Clean appointment for Private Dental Health Insurance patients. Not with a Health Fund?

Just pay \$179 Includes FREE Xrays worth \$160 Full Comprehensive Exam, Clean and Polish, OPG X-rays, Treatment Planning and Fluoride

A whiter brighter Smile in one hour PHILIPS Zoom White speed in chair teeth whitening special - only \$595 (normally \$950)

**NOW ACCEPTING**  **zip|money**

**0% INTEREST ON PAYMENT PLANS**



**Gosford Dental Lifeline**

*We provide reasons to smile*

**BOOK  
ONLINE**

**Ph: 4323 7007**

**PORCELAIN VENEERS | FREE CONSULTATION | INVISALIGN**

**Bulk Billing**

**\$1,000 Free Dental Care  
for children age 2 to 17 -  
Ask us for the Details**



Dr. Meena Gambhir



Dr. Namita Mehta



**Saturday Appointments Available - We accept Veteran's Affairs patients**

**Shop 1, 201 Mann Street, Opposite Gosford Train Station, Gosford 2250**

**gosford@dentallifeline.com.au | www.dentallifeline.com.au**



**GOSFORD - BONDI - HORNSBY**

**\* OPENING SOON IN MAITLAND \***



Dr. Dolly Soni



# Activation framework and identity package for Peninsula

A new “place activation framework” and “town centre identity package” have been produced by Central Coast Council for the Peninsula.

It is unclear whether the community will be given the opportunity to comment on the plans.

A council document, dated May 2020, and called the Place Activation Framework – Woy Woy, Umina, Ettalong Town Centre, said the aim of placemaking was to “facilitate creative patterns of activity, exchange and connection, that support its ongoing social, recreational, cultural and economic role and celebrate its unique character.”

“Visitation drivers” would “attract people to centres and create momentum for visitation by residents and visitors”.

To decide what the “visitation drivers” would be, the document said: “It is essential to arrive at a thorough and considered understanding of place.”

“This requires a detailed audit of the essential elements of a centre that extends to the public domain and explores how the centre fits within a wider environment.”

The Place Activation Framework document outlines council’s “place assessment findings, along with



a summary of the engagement outcomes that serves as basis for the identified key principles which can drive activation and align with the centres identity”.

An invitation sent to selected stakeholders to attend video presentation sessions in June, sent by Council’s enterprise and activation officer Ms Tanya Press, said: “Through observation, research and engagement sessions with the community and stakeholders in late 2019, tailored activation projects and initiatives for each of the areas has been developed.”

Ms Press said the Place Activation Framework would “identify short, medium and longer term initiatives and projects that will increase visitation, enliven the centres and improve the visitor experience”.

“Our goal is to foster community pride and transform the way the community interacts and connects with each of the town centres.”

The Place Activation Framework said it was “informed through an analysis of Central Coast Council’s strategic documentation and the Peninsula Chamber of Commerce’s previous work, including engagement workshops undertaken in 1998”.

Consultation with the public and local businesses in late 2019 was also considered.

The framework describes the “best bits” of Woy Woy as: Fisherman’s Wharf; waterfront; pelicans; Gnostic Corner; beaches out of town and op shops.

Ideas identified for Woy Woy included an activation team, large-scale event, interactive boardwalk, streetscape beautification, artistic mural, greenery and colour and a business hashtag.

Umina’s strengths were listed as vacant shop activation, new opportunities and nature and the same strengths were identified for the Ettalong town centre.

Ideas listed for Umina were a food and wine festival, art events, community collaboration and night events.

Ideas identified for Ettalong were interactive art walks, the ferry connection, dining destination, cycle trails event, shuttle services, water activities and beautify the entry points.

In addition to proposals for each

of the town centres, a Peninsula-wide “way-finding” strategy was proposed, a social media strategy, Peninsula merchandising, business training, streamlining of “pop-up” events, activation of vacant shops, a waste management and a graffiti management program.

The Identity Package was an assembly of graphics, colours, words and phrases designed to express the town centre’s unique image and essence.

“It is intended to be a design guide for future public domain works, creative installations and promotional material.”

The identify package included a new Peninsula Logo based on a water graphic.

Logos and colour palettes have been developed for each town centre around common themes and elements unique to each location.

Stakeholders who attended the invitation-only consultation in June were asked whether the vision accurately represented the town centres, whether they agreed with the action points and how they felt about the elements and patterns presented in the Identity Packages.

**SOURCE:**

**Draft Place Activation Framework, May 2020**

**Draft Identity Package, May 2020**

**Gary Murphy, Central Coast Council**

## Woytopia Festival is cancelled

**The Peninsula Environment Group has announced that it has decided to cancel this year’s Woytopia Festival, which was to be held on Sunday, October 11.**

“With the risk of a second wave of coronavirus still present, we just can’t guarantee a festival that allows the community networking and celebration that Woytopia is all about,” said Group president Mr Grant Focas.

“We intend to return next year.”

Peninsula Environment Group also runs an organic food-buying group, a Nature Play Group and the Woy Woy Peninsula Community Garden.

“All of these activities are still operating to various degrees, and welcome new members.”

**Social media, 19 Jul 2020**

**Grant Focas, Peninsula Environment Group**

ADVERTISEMENT



**Cllr Jane Smith**  
**Independent**  
**Deputy Mayor**  
**Central Coast Council**

### Local Government - the closest level of government to our community

Local government is often described as the closest level of government to the people. The role of a Councillor is varied - from responding to resident concerns about a local road to strategic planning for the next 20 years for our region. Councillors are accountable to our community. This article gives a snapshot of my activities during the last month.

- **Social Impact Taskforce** - a group to discuss responses to the social impacts of COVID-19
- Attended a **launch event** for Youth Connections **on behalf of the Mayor**
- Attended a **site visit** with staff looking at **employment lands** in the Warnervale area
- **Extraordinary Council Meeting**
- **All day Councillor workshop** with staff to review Council’s **Operational Plan and Budget** for the next 12 months. We know that Council, like many businesses and organisations, will feel the economic impact of the pandemic. This workshop discussed how we plan for that impact.
- **Site inspection with staff** - looking at a residential proposal in the north of the Central Coast
- **Councillor Briefings** - staff providing information and answering questions about items that will be coming to a Council meeting.
- **Meeting with representatives from Department of Planning** - included Councillors and staff to discuss the range of plans that are being developed and how Councillors will be involved
- **Media interview** responding to criticisms of Council made by a State MP
- **Ordinary Council meeting**
- **Site meeting** with Council staff to look at issues raised by residents about **local roads**.
- Chaired the meeting of the **Employment and Economic Development Advisory Committee** - we received an update on some of the economic impacts from COVID-19 for our region.
- **Innovation Breakfast Series** - public event via Zoom. A fantastic

initiative from our staff with speakers on the future of education

- Attended the **Local Government NSW Water Forum** (via Zoom) - speakers included Melinda Pavey, Minister for Water and experts in water management
- **Updates from staff** regarding impacts of severe weather along our coastline - including at North Entrance, Wamberal and Avoca Beach.

One of the initiatives that I have supported in Council is the establishment of Advisory Committees. This is a way of involving community members, agencies and other organisations in providing advice on areas where Council has certain responsibilities. It also increases the transparency and accountability of our Council.

During the last month, I have attended a number of Advisory Committee meetings including:

- Heritage Advisory Committee
- Coasts and Catchments Committee for Tuggerah Lakes
- Water Management Advisory Committee
- Town Centres Advisory Committee

This snapshot highlights the diversity of activities that involve Councillors. Of course, there are also emails and phone calls with local residents and in normal times, we would also be attending community meetings and events.

Local government is central to the functioning of our democracy. Prior to amalgamation, the ratio was one Councillor for approximately 16,000 residents on the Central Coast. The amalgamated Council results in a ratio of one Councillor to approximately 22,000 residents and by 2036 this is likely to increase to 1 to 27,000 residents.

Although a Councillor’s role is challenging and continually subject to much scrutiny and criticism, it is also rewarding and plays an essential role for our community. I would encourage anybody who has an interest in our democracy to engage more with their local community and our local Council.

### Storms battering our coastline



Over the last week, we have experienced significant weather events resulting in coastal erosion in a number of locations along our coastline. The first priority must be the safety of residents and the community - and Council has been working with a range of agencies in responding to this priority.

The broader issue of coastal erosion is long-standing with both local and state government having a role to play. Councils need to work within the legislation established by the State government.

Council has a Coastal Zone Management Plan endorsed by the NSW Government that identifies a revetment wall for Wamberal Beach. The design is underway and the cost will be millions of dollars. Where the money comes from to pay for the wall is still to be determined.

No solution is a permanent solution and no wall will last forever. Council continues to work with NSW agencies to design a revetment wall.



# Playgrounds upgraded, as 'playspace' strategy drafted

**Central Coast Council has announced the completion of upgrades to playgrounds at Brisbane Ave and Lentara Reserve, and at the Peninsula Recreation Precinct, Umina.**

It has also announced that its draft Playspace Strategy is on exhibition with public comments being accepted until August 14.

The draft strategy appears to signal Council's adoption of the term "playspaces" to refer to playgrounds.

A council media release used the term "playspace" 57 times and the word "playground" only twice.

Council director Mr Scott Cox said: "The strategy was developed to set consistent guidelines and goals for the development and sustainable management of playspaces across the whole Central Coast region.

"The Playspace Strategy also ensures future playspaces are appropriately located with equal distribution across the region, and are well designed, inclusive and will further develop our network

of quality playspaces to provide a range of play experiences catering to the varied needs of our community.

"Our 20-year management program provides a long-term strategy for regular inspection, repair, replacement and upgrades to ensure the safety and maintenance of these valued playspaces."

Mayor Cr Lisa Matthews commented on the social, economic and health benefits these new playspaces offer to bring.

"Playgrounds are important spaces, through which the community builds social networks and keeps active.

"Playspaces can also increase tourism and economic activity in the surrounding areas.

"Council will continue to invest in playspaces and seek and secure grant funding from all levels of Government."

**SOURCE:**  
Media Release, 15 Jul 2020  
Scott Cox, Central Coast Council



St Luke's Anglican Church on Blackwall Rd

## Church receives permission for alterations

**A Woy Woy church has received council permission for alterations and additions to its multi-purpose room and washrooms.**

A Construction Certificate was lodged with Council on July 13 for the \$160,000 project at St Luke's Anglican Church in Blackwall Rd, Woy Woy.

The development will add a multi-purpose room to the existing

church and install a new unisex disabled access bathroom, a new ramp and entry doors.

Fire services will also be upgraded in the existing building to comply with the National Construction Codes for access and fire safety.

Some of the key items to be upgraded include: fire hazard properties and the fire resistance of construction materials; emergency

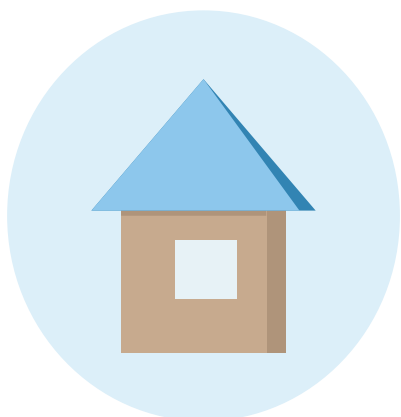
egress widths, travel distances, stairs and door requirements; building accessibility, car parking for people with disabilities; fire extinguishers and smoke alarms; emergency lighting; exit signs; and the provision of sanitary facilities.

Central Coast granted consent for the work in March.

**SOURCE:**  
DA Tracker, 13 Jul 2020  
DA5774/2019, Central Coast Council

# COVID-19

## How to protect yourself and our community



**Self-isolate and practice social distancing**



**Clean and disinfect surfaces regularly**



**Use hand sanitiser**



**Wash your hands regularly**

## COVID-19 HOTLINE - 1800 020 080

**Liesl Tesch MP | Member for Gosford**

Authorised by Liesl Tesch, 20 Blackwall Road, Woy Woy NSW 2256. Printed using Parliamentary Entitlements.





## Application for three three-bedroom villas



View of the site from the street

**An application has been lodged to replace a single dwelling with a three-unit multi-dwelling housing development in Flathead Rd, Ettalong.**

The development complies with the Gosford Local Environment Plan 2014 for height, floor space ratio and minimum lot size, according to a statement submitted in support of the application.

It deviates from the requirements for setbacks, driveway design and open space but the proponent argues the differences are minimal.

The block is located at 23 Flathead Rd, which is described as a flat 974 square metre site that currently contains a single house.

"The area is characterised by a mixture of residential development and small scale commercial, retail, medical and educational establishments of varying height, bulk and scale," according to the application written by Clarke Dowdle and Associates.

"The site is located near public bus transport, recreational facilities, retail facilities, medical

centres, hospitals and sporting grounds.

"It is considered that the proposal is in keeping with the existing and likely future development of the surrounding area.

"The application seeks consent for the demolition of the existing dwelling (and vegetation) and the erection of three three-bedroom villas with garages, driveway, stormwater tanks and front courtyard fencing.

"Vehicular access is proposed via a driveway that would run along the eastern side of the site and appropriate areas to store mobile waste collection bins away from the street and clothes drying areas that would be screened from other dwellings and the public domain.

"The multi-unit housing building design would not result in any adverse environmental, amenity, social or economic impacts to the site and surrounding area," the statement supporting the application concluded.

**SOURCE:**  
DA Tracker, 20 Jul 2020  
DA58868/2020, Central Coast Council

## Proposal for three-storey six-unit flats open for comment

**The construction of a \$1.6 million six-unit three-storey residential flat building has been proposed for Ettalong.**

Central Coast Council is currently calling for public submissions into the development application for the demolition of the existing building on 56A The Esplanade at Ettalong to make way for the flat building with basement parking, pool and a two-lot strata division.

A Statement, prepared by Piper Planning to support the development application, said that the proposal had been made in response to consultation

undertaken with officers of the Central Coast Council at a pre-development application meeting held on February 28.

"It was acknowledged that the site displayed contextual influences that warranted pragmatic consideration to the form of the development and its placement within its setting," the Statement said.

"The development sits at an urban interface, displaying strongly-formed commercial and residential developments in proximity," it said.

"It also displays a stunning outlook to the east, across Ettalong Beach and the Brisbane Water.

"The site therefore displays substantial value, warranting adequate capitalisation, which will underpin value and consolidation of the locality.

"The design also represents a highly-considered architectural outcome in terms of optimal use of the land and respecting the amenity of surrounding premises."

The 999 square metre lot currently contains a single dwelling and ancillary structures and the site is lower than adjoining lots to the north.

The two street frontages mean vehicle access could be via Broken Bay Rd rather than The Esplanade.

According to the Statement,

the allotments exist in a locality undergoing substantial renewal and investment.

"While some original cottages exist, many surrounding premises have new structures developed to the full capacity of the lands.

"In this manner, numerous examples of newer, substantially-massed buildings are in close proximity to the south, along The Esplanade.

"In total, the development seeks consent for six dwelling units, being one four-bedroom, four three-bedroom and one two-bedroom.

"The units are placed over three levels of residential accommodation, with three on

ground level, two on the midlevel and a penthouse style unit on the upper level.

"Basement carparking is proposed for 12 vehicles, with access via the western boundary of the site on Broken Bay Rd."

The proposal does not comply with the Gosford Local Environment Plan 2014 for building height or floor space.

Council has invited the public to make submissions on the proposal, closing August 21.

**SOURCE:**  
DA Tracker, 10 Jul 2020  
DA58744, Central Coast Council

### Live Well at Home during and beyond COVID-19

**We Do  
Home Care  
Differently**



### CHSP, NDIS & Home Care Packages

- Leading provider of in-home care services, including personal care, meal preparation, household task, Social support, transport, gardening and more!
- 24/7 Live-in, Post-Hospital, Respite and Casual Care throughout Central Coast & Hunter Region
- Experienced with advanced care needs, including Alzheimer's and Parkinson's.
- Providing care services to NDIS clients to achieve their goals
- Consistency of care with carefully matched Carers
- Zero exit fees, low case management fees – more care hours available!

**Call Today to arrange a FREE  
In-Home consultation!**

**02 4353 1700**

**WWW.COASTWIDECOMMUNITYCARE.COM.AU - ENHANCING LIFE, EXCELLING IN CARE**



## Six units proposed to replace two houses in one street

**Two multi-dwelling housing proposals have been lodged with Central Coast Council for the same street.**

One application involves the demolition of existing structures and building of a three-unit multi-housing development at 55 Springwood St, Ettalong.

The cost of work is estimated at \$600,000 but no other details are currently available on Central Coast Council's planning portal.

The other, lodged on July 4, is for the demolition of the existing house at 14 Springwood Street – the Blackwall end of the street – to also replace it with three units.

The 14 Springwood Street proposal is open for public comment until August 14 and one submission has already been lodged.

On 26 September 2019, Council refused DA 55557/2018 on the basis that the multi-dwelling development was not in accordance with the objectives of Zone R1 General Residential under the Gosford Local Environmental Plan (GLEP) 2014.

This latest application includes the erection of a two storey residential flat building containing

three two-bedroom dwellings on concrete slab footings with timber stud wall framing.

The application includes a driveway along the northern side, stormwater provisions, front courtyard fencing and landscaping.

The 715 square metre site does not comply with the minimum lot size of 750 square metres.

A Statement in support of the application written by Clarke Dowdell and Associates said: "The site has sufficient area and dimensions to cater for the proposed ... development as it is compliant with the floor area, vertical limitation, building setbacks and off street parking requirements for the RFB development."

The one submission received by Council was opposed to the application and called for trees at the front of the property to be preserved while questioning the size of the development on a relatively small block, limited off-street parking and the additional traffic burden on already-busy local roads.

**SOURCE:**

DA58697, 3 Jul 2020

DA58863, 17 Jul 2020

DA Tracker, Central Coast Council



The 14 Springwood Street site from the road

## Customer service transactions resume at library

**Central Coast Council has resumed customer service transactions at Woy Woy Library.**

However, only cashless payments are being taken, to eliminate the handling of notes and coins.

The move follows a previous

decision to re-open Woy Woy and Umina Beach libraries for a limited range of services, including browsing, borrowing, collecting reservations, returns, using computers and wifi, printing, copying and scanning.

Both libraries remain closed for individual and group study, use of meeting rooms, newspapers and

magazines, in-person programs and events and Justice of the Peace services.

Patrons will be asked to observe social distancing and personal hygiene precautions.

**SOURCE:**

Media Release, 3 July 2020

Cherie Mildwater, Central Coast Council

## Online auction raises \$4700 for hall upgrade

**An online auction conducted by the Pearl Beach Progress Association has raised more than \$4700 for the association's Memorial Hall Upgrade project.**

The auction of 22 items was held this month, closing on July 21. Services and items auctioned

included art lessons, paintings and sculptures.

Afternoon teas, fish and chips and an Irish whiskey pudding cake were also auctioned, as were an architectural consultation, garden weeding and computer tuition.

**SOURCE:**

Website, 22 Jul 2020

Pearl Beach Progress Association

**TWO YEARS  
GUARANTEED  
LEASE TERM\*  
ON YOUR  
INVESTMENT  
PROPERTY**

**key2**  
REALTY

One of our valued partners is offering a two year **guaranteed lease term\*** on eligible investment properties.

Contact us today to find out more  
4326 5566 or [info@key2realty.com.au](mailto:info@key2realty.com.au)

\*Limited time offer. Properties should seek a rental return of no more than \$400 per week and will be assessed against other prerequisites.

[www.key2realty.com.au](http://www.key2realty.com.au)



## News



## Bookmobile service returns

**Central Coast Council's bookmobile library has resumed its service to Patonga and Pearl Beach.**

It will be visit every second Friday, stationed at Patonga Community Progress Hall at the corner of Brisk St and Bay St between 9.30 and 10:15am and at the Memorial Community Hall in Pearl Beach from 10:30 to 11:15 am.

It will visit the towns next Friday, July 31.

The service was temporarily interrupted earlier this year due to

the coronavirus restrictions.

It returned to the roads on Monday, July 6, with a number of changes to its itinerary.

The bookmobile will also call at Empire Bay and Wagstaffe every second Tuesday.

It will next visit these locations tomorrow.

The bookmobile will be stationed opposite the Kendall Rd Post Office in Empire Bay from 9:30 to 10am, and then at Wagstaffe Community Hall from 10:30 to 11:15 am.

**SOURCE:**

Website, 9 July 2020  
Central Coast Council

## CWA hall to remain closed

**The Woy Woy branch of the Country Women's Association has decided not to hire out its community hall until January at the earliest.**

The decision was made due to the difficulties in maintaining hygiene in a space that could be hired out to different groups of people twice a day.

"The Covid-19 guidelines and restrictions for community halls mean that as a group of volunteers we cannot continue renting out our hall on a daily basis as we do not have the resources to check the hall every day after each hirer leaves and before the next one arrives," said Woy Woy branch president Ms Jane Bowtell.

"While we trust every hall hirer does a thorough clean, it is

ultimately our responsibility as an association to make absolutely sure.

"We are also currently limited to 12 people in the hall at any one time.

"This decision was a difficult one but one we feel protects not only us but the whole community.

"We have a lot of very loyal permanent hirers and we know this decision will affect them dramatically and hope that once we are able to safely open they will come back to us."

Ms Bowtell said the branch had been focusing on collecting and donating bedding and clothing for those in need, in partnership with groups including Central Coast Disaster Relief, Coast Hands, We Care Connect and Because We

Care Boutique Central Coast.

She said the group had been able to use the hall to store the donated items.

While the hall will remain closed to hirers, we have decided to keep the donation drive going," said Ms Bowtell.

"We are extending it to include food items for people and their pets so that Central Coast Disaster Relief and Coast Hands can make up food hampers to help those in need during these unprecedented times.

"This was and is still undertaken using social distancing and the square metre rule government guidelines."

**SOURCE:**

Media Release, 16 Jul 202,  
Jane Bowtell, CWA Woy Woy



# For Sale

Please support  
our business during  
this pandemic

2 1 2



**1/28A Haynes Ave Umina Beach**  
**Bargain Buy \$460,000**

For Sale Under the Instruction of the NSW Trustee and Guardian!!

A genuine starter for a lucky couple!

A TWO bedroom house .....yes house.....with existing Strata Title.

Of Course - lots of work to be done!

But the BENEFITS are REAL

Ideal location, Children's Parks, Opposite

Transport to Woy Woy Railway Station, Schools within walking distance,

level grounds plus much more

All offers considered



**Lois Jones**  
0439 739 324



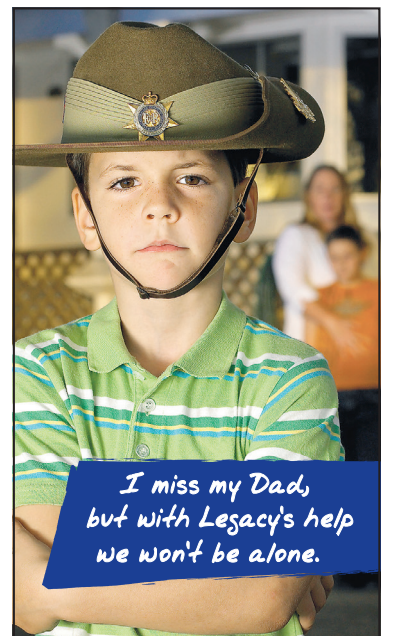
**Jessica Walsh**  
0423 907 911



226 West Street, Umina Beach

P 02 4339 7644

[www.loisjonesrealestate.com](http://www.loisjonesrealestate.com)



*I miss my Dad,  
but with Legacy's help  
we won't be alone.*

When Jacob's Dad passed away after returning from East Timor, he and his family were devastated. Legacy stepped in to offer practical help. Legacy helps many brave families like Jacob's every week of the year. To keep us going, please donate to Legacy. Thank you.

Phone 1800 534 229 or visit  
[www.legacy.com.au](http://www.legacy.com.au)





# Two changes requested for aged care development

Two applications have been made for changes to conditions of consent for an aged care development approved in 2018 for land at 45 Hillview St, Woy Woy.

One change has been approved under delegated authority by Central Coast Council staff, while the other is still under assessment.

The approved application was made in April to modify the basement carpark and internal floor level of the ground floor and to delete another consent condition.

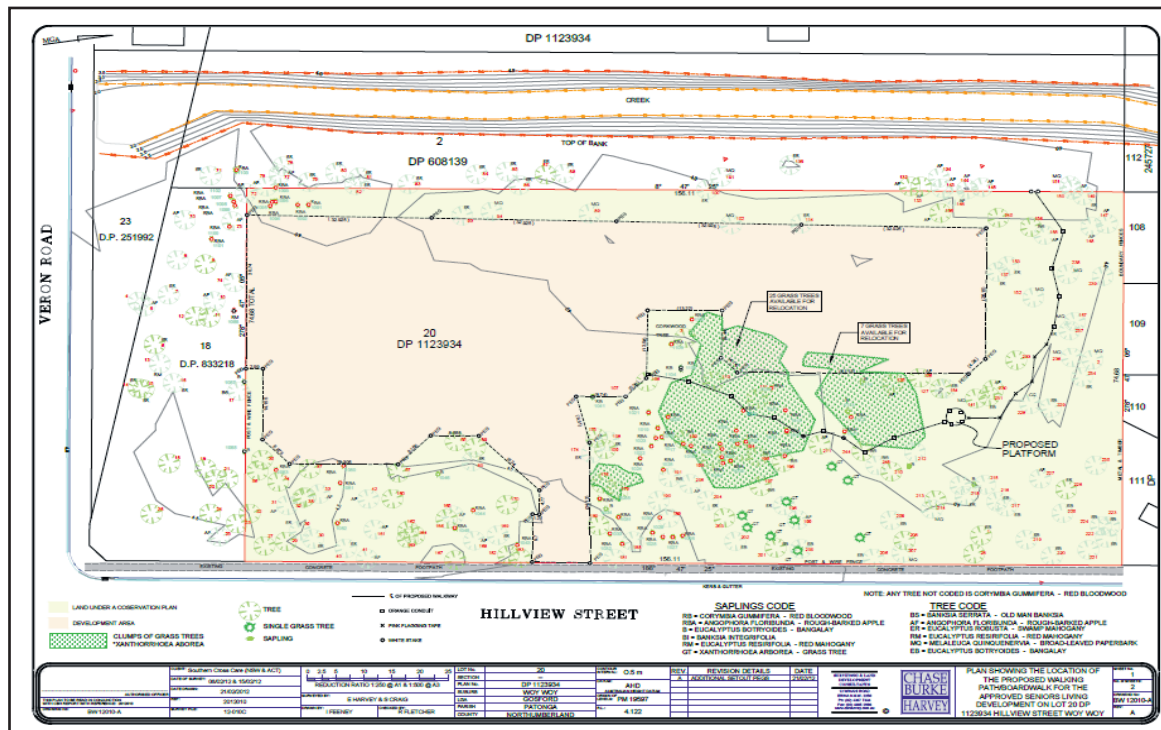
The Council planners' assessment report said the modifications would "reduce the volume and depth of the basement level so that its bottom in-ground floor slab is raised to be above the water table level rather than below it".

It would have an "improved outcome for hydrology and environment, avoiding the need to pump out ground water during construction and reducing excavation works".

"There is no change to the approved building footprint or building height and no impact on the designated bushland protection/conservation area of the site," the assessment stated.

The proponent lodged another Section 4.55 application on July 6, which would amend condition 2.7(a).

That condition required the developer to "submit design



Survey plan

details of the following engineering works within private property: ...driveways-ramps and car parking areas must be designed according to the requirements of Australian Standard AS 2890: parking Facilities for the geometric designs, and industry standards for pavement designs ... the minimum crest driveway level to basement car parking must be Reduced Level 4.5m Australian Height Datum ... the access driveway into the loading dock and waste storage areas are to accommodate

a SRV 6.4 metres in length."

Details of the requested change had been made public on the Council's planning portal by July 23.

Council's assessment of this amendment commenced on July 6.

The April deletion of Condition 2.17 meant the developer was no longer required a controlled activity approval for pumping out of groundwater during construction.

Council staff said the need for controlled activity approval was

"obviated by the higher basement slab level now being made higher than the water table".

"It is noted that the water table fluctuates between RL 2.3m and RL 2.55m and raising the basement as proposed should avoid the water table negating the need to obtain controlled activity approval.

"It is considered Condition 2.17 can be deleted on the basis an advisory condition is imposed to ensure that legislative obligations are met if during works the water

table is reached and extraction of ground water is required; a controlled activity approval is obtained."

According to Council documents, the land is "partly occupied by remnant ecologically endangered community, Umina Coastal Sandplain Woodland, comprising of an area of 6,647m<sup>2</sup> which is contained within a designated bushland protection-conservation area (Bushland Management Zone) under positive covenant DP 1123934 ... dated 21 February 2012".

After a failed attempt to modify a previous development approval for a retirement village, a new and revised development application for a \$28 million aged care facility was approved by the Joint Regional Planning Panel in 2018.

As the application was for a development exceeding \$20 million, it was decided by the Joint Regional Planning Panel as a regional development.

A construction certificate for Stage One Civil and Ground Works was lodged with Central Coast Council for the new multi-level nursing home on January 9 this year.

**SOURCE:**  
DA Tracker, 23 Jul 2020  
DA53784/2018, Central Coast Council

**Mitronics**  
THE TECHNOLOGY COMPANY

**NEW FINANCIAL YEAR SPECIALS**

**BROTHER**  
**L3745**

**\$370.00**  
ex GST



**HP**  
**M479**

**\$565.00**  
ex GST



**Rent a Konica Minolta Bizhub C227 from \$4.75 a day!**

Colour printer & scanner.

Limited stock available.

\*rental over 60 months - optional fax, paper tray, extra charges apply for finisher. Free laptop only applies for KM C227 model. All prices exclude GST.

**BONUS DEAL**

First 17 orders will also receive a **FREE HP laptop!**

Make an enquiry via our website [www.mitronics.com.au](http://www.mitronics.com.au) or call us on 1300 207 122 and mention our 'new financial year sale' to redeem this offer.

**Recycle right!**



Paper, cartons and cardboard



Plastic bottles and containers



Metal food, drink and spray cans



Glass bottles and jars

## TOP TIPS

- Flatten boxes and paper
- Don't bag your recycling
- Make sure recycling is empty and rinsed
- Don't squash bottles, cans or containers

[1coast.com.au](http://1coast.com.au)  
1300 126 278

**1coast**

**CLEANAWAY**

Central Coast Council



# Development Consents

Notice is given of the granting of the following Development Consents and Complying Development Certificates pursuant to Section 101 of the Environmental Planning and Assessment Act, 1979. Consents can be made available for inspection by contacting Central Coast Council.

No	Date	Address	Suburb	Proposed Development
42222/2012	13-07-2020	69 Hillside Rd	AVOCA BEACH	Secondary Dwelling & Swimming Pool (Amended Application)
58217/2020	08-07-2020	35 Carolina Park Rd	AVOCA BEACH	Proposed Conversion of Lower Ground Floor to Secondary Dwelling
334/2020	09-07-2020	15 Lakin St	BATEAU BAY	Demolition of Existing Dwelling, Dwelling & Tree Removal
58413/2020	13-07-2020	16 Bundaleer Cr	BENSVILLE	Alterations & Additions, Deck & Awning
523/2020	08-07-2020	81 Lakedge Ave	BERKELEY VALE	Awning
301/2020	10-07-2020	18 Somerville Cl	BUDGEWOI	Dual Occupancy (Detached), Subdivision & Demolition of Existing Structures
55561/2018	08-07-2020	12 Cheero Point Rd	CHEERO POINT	Partial Excavation to Sub Floor Internal Works Plus Deck Replacement of Extension New Double Garage (Amended Application)
54919/2018	09-07-2020	78 Del Monte Pl	COPACABANA	Dwelling House (New) with Attached Garage & Plunge Pool (Amended Application)
58486/2020	08-07-2020	32 Malinya Rd	DAVISTOWN	Garage with Attached Rear Awning Roof, BBQ & Fencing
55329/2018	14-07-2020	4 Lavinia St	FORRESTERS BEACH	Covered Deck & Minor Internal Alterations (Amended Application)
542/2020	10-07-2020	27 Pleasant Valley Rd	FOUNTAINDALE	Remove 10 Trees
566/2020	07-07-2020	191 Kanangra Dr	GWANDALAN	Dwelling
54722/2018	13-07-2020	49 Heath Rd	HARDYS BAY	Dwelling Addition, New Garage & Stairs, Extend Deck (Amended Application)
56759/2019	14-07-2020	108 Araluen Dr	HARDYS BAY	Extension of Existing Concrete Access Bridge (Amended Application)
58477/2020	10-07-2020	243 Woy Woy Rd	HORSFIELD BAY	Deck
123/2020	10-07-2020	45 Treelands Dr	JILLIBY	Additions to Garage to Create a Dual Occupancy (Detached)
445/2020	08-07-2020	34 Craigie Ave	KANWAL	Home Business - Beauty Therapy (Amended Application)
549/2020	06-07-2020	2 Vaughan Cl	KILLARNEY VALE	Home Based Cake Business
455/2020	08-07-2020	34 Cornish Ave	KILLARNEY VALE	Awning
518/2020	09-07-2020	65 Dampier Bvd	KILLARNEY VALE	Additions
58533/2020	14-07-2020	85 The Scenic Rd	KILLCARE HEIGHTS	Carport & Deck
175/2020	06-07-2020	143 - 147 Cherry Ln	KULNURA	Proposed Temporary Use of Land for 12 Months Only as a Function Centre
568/2020	10-07-2020	23 Koolooro Rd	NORAVILLE	Demolition of Garage, Alterations & Additions
58464/2020	09-07-2020	19 Lake Shore Dr	NORTH AVOCA	2 Storey Addition to Front of Existing & Garage
56103/2019	10-07-2020	46 Bellevue Cr	NORTH AVOCA	Alterations & Additions to Existing Dwelling
497/2020	09-07-2020	50 Footts Rd	OURIMBAH	Dwelling
57629/2019	14-07-2020	40 Wycombe Rd	TERRIGAL	New Dwelling House & Retaining Walls (Amended Application)
58355/2020	07-07-2020	24 Salisbury Dr	TERRIGAL	Second Storey Addition
407/2020	08-07-2020	9 & 10 / 243 - 245 Main Rd	TOUKLEY	Use & Fitout to a Food & Drink Premises
58238/2020	14-07-2020	9 Kurow Cl	WAMBERAL	Use of Existing Bathroom & Sink Facilities within a Shed
58532/2020	10-07-2020	162A Ocean View Dr	WAMBERAL	Swimming Pool
1160/2019	06-07-2020	27, 29 & 29A Amsterdam Cct	WYONG	Alterations & Additions to Existing Childcare Centre & Signage (Business Identification Signs)
1290/2018	08-07-2020	51 Windsorgreen Dr	WYONG	Dwelling (Amended Application)

## Complying Development Certificates

No	Date	Address	Suburb	Proposed Development
299/2020	06-07-2020	190 - 192 The Entrance Rd	LONG JETTY	Change of Use - Pilates Studio Shop 9

## Register to use the NSW Planning Portal

Looking to lodge a development application, complying development application, or a construction, sub-division and occupation certificate? Visit **[centralcoast.nsw.gov.au/NSWPlanningPortal](https://centralcoast.nsw.gov.au/NSWPlanningPortal)** for more information and to register for the NSW Planning Portal



## Development Applications

The following Development Applications are notified for public comment and can be viewed online at **[centralcoast.nsw.gov.au](https://centralcoast.nsw.gov.au)**

### Written submissions close: 14 August 2020

No	Address	Suburb	Description
56501/2019	993 The Entrance Rd	FORRESTERS BEACH	Construction of a Single Storey Group Home (Amended Application) Applicant - Ferntree Homes Pty Ltd
647/2020	245 Peach Orchard Rd	FOUNTAINDALE	Demolish Existing Shed & Construction of a New Dwelling Creating a Detached Dual Occupancy Applicant - CEO Architectural
600/2020	3 Hicks Ln	TUMBI UMBI	Dwelling House (Temporary) During Construction of Dual Occupancy Applicant - Mr B Hillier
1148/2018	3 Hicks Ln	TUMBI UMBI	Staged Dual Occupancy (Detached), Shed & Inground Pool (Amended Application) Applicant - Mr B Hillier

### Written submissions close: 21 August 2020

No	Address	Suburb	Description
58744/2020	56A The Esplanade	ET TALONG BEACH	Demolition of Existing Building, Construction of 3 Storey Residential Flat Buildings, Basement Parking, Pool & 2 Lot Strata Subdivision Applicant - Elk Designs
58829/2020	59 Terrigal Dr	TERRIGAL	Demolition of Existing Dwelling & Construction of 9 Unit Boarding House Applicant - L J Cox
803/2019	48 McLachlan Ave	LONG JETTY	Boarding House with 8 Rooms and Demolition of Existing Buildings (Amended Application) Applicant - ADG Architects
658/2020	14 - 16 Alison Rd, Alison Rd (Between Pacific Hwy & Rankens Ct), 10 Rankens Ct, Robleys Ln, Hely St (Between Robley Ln & Alison Rd)	WYONG	Use of Wyong CBD to Host an Arts Festival, 1 Event per year for 5 Years Applicant - Central Coast Council

Central Coast Council is required to comply with the requirements of the Government Information (Public Access) Act 20019 which requires submissions on Development Applications to be published on Council's website. In order to maintain privacy, all submissions lodged using Council's DA Submission Form or online portal will have personal contact details and signature redacted. Submissions received not using Council's DA Submission Form or via the online portal will be published in full. Your submission may also be reproduced in full in Council reports or in Court proceedings.

## Be the first to know!

Are you always finding out about Council events and programs after they've happened?  
Interested in finding out what has been discussed and determined at Ordinary Council Meetings, but don't have the time to attend or watch them the live streamed?  
Keep up to date with our weekly Coast Connect e-newsletter and get all the latest Council news delivered straight to your inbox!  
Sign up today at **[centralcoast.nsw.gov.au/enews](https://centralcoast.nsw.gov.au/enews)**



**Council Offices are currently closed to the public. Customer service continues via phone 1300 463 954**



## Bruce Croft becomes Rotary president at Umina

**Mr Bruce Croft has taken over from Dr Rouel Vergara as president of Rotary Club Umina Beach.**

He was inducted in a Changeover Dinner earlier this month.

Mr Croft said his priorities for the coming year were to build membership, promote greater awareness for the club and its local activities and community support.

The club would also continue its wider support for young people and further preparation for the club's proposed projects in the Phillipines and Samoa.

"It's not an easy time for organisations like Rotary because of Covid-19 issues, however, Umina Rotary will continue with its major emphasis of supporting youth," Mr Croft said.

"Umina Rotary Club currently has a Rotary exchange student in Slovakia and recently farewelled an exchange student, Noelia Copony, who has returned to her home in Bregenz in Austria after spending 12 months in Umina.

"Both attended Brisbane Water Secondary College and, for many years, the club has provided



*New Rotary president Mr Bruce Croft (left) is congratulated by outgoing president Mr Rouel Vergara*

annual bursaries at the college and has supported the ag farm there.

"The club is currently working on a project, in conjunction with Forbes Rotary, to enable students

from Brisbane Water Secondary College to spend time on working farms in the Forbes, Condobolin and Parkes areas.

"It is also working on a project

involving hand-washing and oral hygiene in a school in the Philippines.

"Unfortunately, some activities and projects have had to be

shelved for the time being because of Covid-19.

"These include the highly successful Youth Charity Ball where funds have been raised for the Top Blokes Foundation which is helping to improve the mental health of young males on the Central Coast.

"Umina Rotary will also be looking at increasing its membership as a few members were lost due to Covid-19 related issues," Mr Croft said.

Club secretary Mr Michael Curley said Mr Croft and his wife Lesley were long-term Umina residents having moved here when they married 49 years ago.

Their three sons went to school in Umina and their grandchildren are attending local schools.

He said Mr Croft worked for Sydney Water, commuted every day to Sydney and was currently secretary of Bendigo Bank in Ettalong, and was also involved with other organisations such as the PCYC and sporting clubs.

**SOURCE:**

**Media release, 21 Jul 2020**

**Michael Curley, Rotary Club of Umina Beach**

## Volunteers wanted for dunecare

**The Umina Community Group is seeking volunteers for its dunecare program.**

The group is currently running four Wednesday dunecare teams each month, where previously it had run two, according to Umina Community Group vice-president Mr Rod Unsworth.

Two teams are run at South St. One is held at Berith St, and the

other will be held at Ocean Beach Rd, adjacent to the Umina Beach Surf Life Saving Club.

The Ocean Beach Rd team meets on the first Wednesday of the month, led by Ms Jan Deighton.

The Berith St team meets on the second Wednesday of the month, led by Mr Mark Nitsos.

On the third Wednesday of the month, a team led by Ms Alison

Winch meets at South St.

On the fourth Wednesday of the month, a team led by Ms Debbie Sunartha also meets at South St.

The dunecare teams meet from 9am to 11am in the winter months from April to October and from 8am to 10am in summer.

**SOURCE:**

**Media Release, 1 July 2020  
Rod Unsworth, Umina Community Group**

## Warrah Trig road closed

**Warrah Trig Rd, the track from Patonga Dr to the Warrah Trig carpark, has been closed for repairs.**

The road was closed to cars, by the NSW National Parks and Wildlife Service, between Friday, July 10, and Friday, July 31.

It remained open to pedestrians.

A notice on the Service's website stated: "In the interest of public safety, Warrah Trig Rd in Brisbane Water National is closed

to vehicles.

"This is due to recent damage to the road surface.

"Maintenance work is planned to repair the road, pending suitable weather conditions:

"Signs will be in place around closed areas

"Penalties apply for non-compliance."

**SOURCE:**

**Website, 20 Jul 2020  
National Parks and Wildlife Service**

**Coastal Compensation**  
Law Specialists



ACCREDITED SPECIALIST  
PERSONAL INJURY

- Motor Vehicle Accidents
- Personal Injury and work related claims
- Life Insurance - Death Benefit
- Workers Compensation
- Total Permanent Disability Claims
- Public Liability claims

**We have a dedicated team of lawyers with over 50 yrs combined experience**

**25 Alison Road WYONG - 98 Mann Street GOSFORD**

**4353 1248**

**4322 6666**

**YOUR INSURANCE SPECIALISTS**

**NO WIN...  
NO FEE\***

\*Conditions apply





	ABC (C20/21)	PRIME (C61/60)	NINE (C81/80)	TEN (C13)	SBS (C30)
Monday 27 July	<div>6:00 News Breakfast [s]</div> <div>9:00 ABC News Mornings [s]</div> <div>10:00 Landline [s]</div> <div>11:00 Grand Designs Revisited [s]</div> <div>12:00 ABC News At Noon [s]</div> <div>1:00 Marcella (M I) [s]</div> <div>2:00 Call The Midwife (M) [s]</div> <div>3:00 ABC News Afternoons [s]</div> <div>4:10 Think Tank [s]</div> <div>5:10 The Repair Shop [s]</div> <div>6:00 The Drum [s]</div> <div>7:00 ABC News [s]</div> <div>7:30 7.30 [s]</div> <div>8:00 Back Roads: Omeo, Victoria</div> <div>8:30 Four Corners [s]</div> <div>9:15 Media Watch [s]</div> <div>9:35 Q&amp;A (PG) [s]</div> <div>10:35 ABC Late News [s]</div> <div>11:10 Shaun Micallef's On The Sauce (M I) [s]</div> <div>12:10 Wentworth (MA15+) [s]</div> <div>12:55 The Letdown: Pilot (M I) [s]</div> <div>1:25 rage (MA15+) [s]</div> <div>3:00 Gardening Australia [s]</div> <div>3:30 Call The Midwife (M) [s]</div> <div>4:30 The Drum [s]</div>	<div>6:00 Sunrise [s]</div> <div>9:00 The Morning Show (PG) [s]</div> <div>11:30 Seven Morning News [s]</div> <div>12:00 Program To Be Advised</div> <div>1:00 Program To Be Advised</div> <div>2:30 RSPCA Animal Rescue [s]</div> <div>3:00 The Chase UK (PG) [s]</div> <div>4:00 Seven News At 4 [s]</div> <div>5:00 The Chase Australia [s]</div> <div>6:00 Seven News [s]</div> <div>7:00 Home And Away (PG) [s]</div> <div>7:30 Farmer Wants A Wife (PG) [s]</div> <div>– Farmers Alex, Harry, Neil, Nick and Sam return to their farms, each bringing one lady they've chosen to spend the first 24-hour date with.</div> <div>8:30 9-1-1 - Lone Star: Pilot/ Yee-Haw (M) [s]</div> <div>10:30 The Latest Seven News [s]</div> <div>11:00 S.W.A.T.: Rocket Fuel (M d,v)</div> <div>12:00 Black-ish: Elder. Scam. (PG) [s]</div> <div>12:30 Black-ish: Advance To Go (PG) [s]</div> <div>1:00 Home Shopping</div>	<div>5:30 Today [s]</div> <div>9:00 Today Extra [s]</div> <div>11:30 NINE's Morning News [s]</div> <div>12:00 Ellen (PG) [s]</div> <div>1:00 Explore: Treetop Estate [s]</div> <div>1:10 Australian Ninja Warrior (PG)</div> <div>3:00 Tipping Point [s]</div> <div>4:00 NINE's Afternoon News [s]</div> <div>5:00 Millionaire Hot Seat [s]</div> <div>6:00 NINE News [s]</div> <div>7:00 A Current Affair (PG) [s]</div> <div>7:30 Australian Ninja Warrior (PG)</div> <div>9:20 A Glorious Life: Bill Lawry (M) [s] – Bill Lawry is the sound of summer. The extraordinary life of the infectiously enthusiastic cricket commentator, unshakeable Test captain and irrepressible pigeon racing champion.</div> <div>10:35 100% Footy (M) [s]</div> <div>11:35 NINE News Late [s]</div> <div>12:05 Lethal Weapon: Jesse's Girl (MA15+) [s]</div> <div>1:00 A Current Affair (PG) [s]</div> <div>1:30 Home Shopping</div>	<div>6:00 Headline News [s]</div> <div>8:30 Studio 10 (PG) [s]</div> <div>12:00 Dr Phil (PG) [s]</div> <div>1:00 Program To Be Advised</div> <div>2:30 Entertainment Tonight [s]</div> <div>3:00 Judge Judy (PG) [s]</div> <div>3:30 My Market Kitchen [s]</div> <div>4:00 Everyday Gourmet [s]</div> <div>4:30 The Bold And The Beautiful (PG) [s]</div> <div>5:00 10 News First [s]</div> <div>6:00 WIN News [s]</div> <div>6:30 The Project (PG) [s]</div> <div>7:30 Bachelor In Paradise (M) [s]</div> <div>9:00 Have You Been Paying Attention? (M) [s] – Have our contestants been paying attention? Our quizmasters and host Tom Gleisner are about to find out!</div> <div>10:00 Celebrity Gogglebox USA (M)</div> <div>11:00 WIN's All Australian News [s]</div> <div>12:00 The Project (PG) [s]</div> <div>1:00 The Late Show (PG) [s]</div> <div>2:00 Home Shopping</div>	<div>5:00 CGTN English News</div> <div>5:15 NHK World English News</div> <div>5:30 Worldwatch</div> <div>2:00 Inside Westminster: The Houses Of Parliament (M)</div> <div>2:50 Alex Polizzi The Fixer (PG)</div> <div>4:00 Great British Railway Journeys (PG)</div> <div>4:35 Walking Britain's Lost Railways: Wales (PG)</div> <div>5:30 Letters And Numbers</div> <div>6:00 Mastermind Australia</div> <div>6:30 SBS World News</div> <div>7:30 Prince Philip - An Extraordinary Life (PG)</div> <div>8:30 Einstein And Hawking: Masters Of Our Universe</div> <div>10:30 SBS World News Late</div> <div>11:00 Football: The World Game</div> <div>11:30 Agatha Christie's Criminal Games (M I,v) (In French)</div> <div>1:20 Luther (MA15+)</div> <div>4:25 Full Frontal With Samantha Bee (MA15+)</div> <div>4:55 Shane's Moorish Spice Journey Bitesize</div>
Tuesday 28 July	<div>6:00 News Breakfast [s]</div> <div>9:00 ABC News Mornings [s]</div> <div>10:00 Four Corners [s]</div> <div>10:45 Meet The Ferals: Goats [s]</div> <div>11:00 The Repair Shop [s]</div> <div>12:00 ABC News At Noon [s]</div> <div>1:00 Rosehaven (PG) [s]</div> <div>1:30 Retrograde [s]</div> <div>2:00 Call The Midwife (M) [s]</div> <div>3:00 ABC News Afternoons [s]</div> <div>4:10 Think Tank [s]</div> <div>5:10 The Repair Shop [s]</div> <div>6:00 The Drum [s]</div> <div>7:00 ABC News [s]</div> <div>7:30 7.30 [s]</div> <div>8:00 Foreign Correspondent [s]</div> <div>8:30 Shaun Micallef's On The Sauce (M) [s]</div> <div>9:30 Putin - A Russian Spy Story: Enemies And Traitors (MA15+)</div> <div>10:20 ABC Late News [s]</div> <div>10:50 Q&amp;A [s]</div> <div>11:55 Wentworth (MA15+) [s]</div> <div>12:45 The Letdown (M I) [s]</div> <div>1:15 rage (MA15+) [s]</div> <div>3:00 Gardening Australia [s]</div>	<div>6:00 Sunrise [s]</div> <div>9:00 The Morning Show (PG) [s]</div> <div>11:30 Seven Morning News [s]</div> <div>12:00 Movie: "My Neighbour's Secret" (M v) ('09) Stars: Nicholas Brendon, Chandra West</div> <div>2:00 Program To Be Advised</div> <div>3:00 The Chase UK [s]</div> <div>4:00 Seven News At 4 [s]</div> <div>5:00 The Chase Australia [s]</div> <div>6:00 Seven News [s]</div> <div>7:00 Home And Away (PG) [s]</div> <div>7:30 America's Got Talent: Audition 6 (PG) [s]</div> <div>8:45 Criminal Minds: Face Off (M v) [s] – It has been a year since Rossi nearly died at the hands of Everett Lynch, aka The Chameleon, and he has developed some new theories.</div> <div>9:45 Criminal Minds: And In The End (M v) [s]</div> <div>10:45 The Latest Seven News [s]</div> <div>11:15 The Goldbergs: Preventa Mode/ Dave Kim's Party (PG)</div> <div>12:30 Home Shopping</div>	<div>5:30 Today [s]</div> <div>9:00 Today Extra [s]</div> <div>11:30 NINE's Morning News [s]</div> <div>12:00 Ellen (PG) [s]</div> <div>1:00 Explore: Te Puia [s]</div> <div>1:10 Australian Ninja Warrior (PG)</div> <div>3:00 Tipping Point (PG) [s]</div> <div>4:00 NINE's Afternoon News [s]</div> <div>5:00 Millionaire Hot Seat [s]</div> <div>6:00 NINE News [s]</div> <div>7:00 A Current Affair (PG) [s]</div> <div>7:30 Australian Ninja Warrior (PG)</div> <div>9:20 Movie: "Olympus Has Fallen" (M v,I) ('13) Stars: Gerard Butler, Aaron Eckhart, Morgan Freeman, Angela Bassett, Melissa Leo, Radha Mitchell</div> <div>11:30 NINE News Late [s]</div> <div>12:00 Timeless: The Darlington 500 (M) [s]</div> <div>12:50 Tipping Point [s]</div> <div>1:45 Explore: Treetop Estate [s]</div> <div>2:00 Home Shopping</div> <div>2:30 Skippy - The Bush Kangaroo</div> <div>3:00 Home Shopping</div> <div>4:00 Ellen (PG) [s]</div>	<div>6:00 Headline News [s]</div> <div>8:30 Studio 10 (PG) [s]</div> <div>12:00 Dr Phil (PG) [s]</div> <div>1:00 Program To Be Advised</div> <div>2:30 Entertainment Tonight [s]</div> <div>3:00 Judge Judy (PG) [s]</div> <div>3:30 My Market Kitchen [s]</div> <div>4:00 Everyday Gourmet [s]</div> <div>4:30 The Bold And The Beautiful (PG) [s]</div> <div>5:00 10 News First [s]</div> <div>6:00 WIN News [s]</div> <div>6:30 The Project (PG) [s]</div> <div>7:30 Bachelor In Paradise (M) [s]</div> <div>9:00 Just For Laughs Uncut (MA15+) [s] – Catch Natasha Leggero, Tom Gleeson and Hannibal Burress.</div> <div>9:30 NCIS: She (M v) [s]</div> <div>10:30 NCIS: Los Angeles: Outside The Lines (M v) [s]</div> <div>11:30 The Project (PG) [s]</div> <div>12:30 The Late Show With Stephen Colbert (PG) [s]</div> <div>1:30 Home Shopping</div> <div>5:00 The Talk (PG) [s]</div>	<div>5:00 CGTN English News</div> <div>5:15 NHK World English News</div> <div>5:30 Worldwatch</div> <div>1:00 PBS Newshour</div> <div>2:00 Secrets Of HM Prison (M)</div> <div>3:00 Great British Railway Journeys (PG)</div> <div>3:35 Who Do You Think You Are?</div> <div>4:35 Tony Robinson's Coast To Coast</div> <div>5:30 Letters And Numbers</div> <div>6:00 Mastermind Australia</div> <div>6:30 SBS World News</div> <div>7:30 Great Asian Railways Journeys (PG)</div> <div>8:30 Insight</div> <div>9:30 The Feed</div> <div>10:00 24 Hours In Police Custody (M I,v)</div> <div>11:00 SBS World News Late</div> <div>11:30 Bad Banks: Dying Banks (M I) (In German/ English)</div> <div>12:30 Cardinal: Kevin/ Toof (MA15+)</div> <div>2:10 Luther (MA15+)</div> <div>3:10 Ride Upon The Storm (M s,v) (In Danish)</div>
Wednesday 29 July	<div>6:00 News Breakfast [s]</div> <div>9:00 ABC News Mornings [s]</div> <div>10:00 Q&amp;A [s]</div> <div>11:00 The Repair Shop [s]</div> <div>12:00 ABC News At Noon [s]</div> <div>12:30 National Press Club Address</div> <div>1:40 Media Watch [s]</div> <div>2:00 Call The Midwife (M) [s]</div> <div>3:00 ABC News Afternoons [s]</div> <div>4:15 Think Tank [s]</div> <div>5:10 The Repair Shop [s]</div> <div>6:00 The Drum [s]</div> <div>7:00 ABC News [s]</div> <div>7:30 7.30 [s]</div> <div>8:00 Hard Quiz (PG) [s]</div> <div>8:30 The Weekly With Charlie Pickering [s]</div> <div>9:00 Rosehaven (PG) [s]</div> <div>9:30 Retrograde (M) [s]</div> <div>9:55 Planet America [s]</div> <div>10:25 ABC Late News [s]</div> <div>11:00 Four Corners [s]</div> <div>11:45 Media Watch [s]</div> <div>12:00 Wentworth (MA15+) [s]</div> <div>12:50 The Letdown: Genealogy (M I)</div> <div>1:20 rage (MA15+) [s]</div>	<div>6:00 Sunrise [s]</div> <div>9:00 The Morning Show (PG) [s]</div> <div>11:30 Seven Morning News [s]</div> <div>12:00 Movie: "Not Like Everyone Else" (M) ('06) Stars: Alia Shawkat, Illeana Douglas</div> <div>2:00 Criminal Confessions: Waterloo (M v,I) [s]</div> <div>3:00 The Chase UK [s]</div> <div>4:00 Seven News At 4 [s]</div> <div>5:00 The Chase Australia [s]</div> <div>6:00 Seven News [s]</div> <div>7:00 Home And Away (PG) [s]</div> <div>8:30 Program To Be Advised</div> <div>11:00 The Front Bar (M) [s] – Join Sam Pang, Mick Molloy and Andy Maher as they share a laugh about the AFL world and catch up with stars of yesteryear and today.</div> <div>12:00 Air Crash Investigations: Aloha - Hanging By A Thread (PG)</div> <div>1:00 Holidays Make You Laugh Out Loud (PG) [s]</div> <div>2:00 Home Shopping</div>	<div>5:30 Today [s]</div> <div>9:00 Today Extra [s]</div> <div>11:30 NINE's Morning News [s]</div> <div>12:00 Ellen (PG) [s]</div> <div>1:00 Explore: Farmer Market [s]</div> <div>1:10 Australian Ninja Warrior (PG)</div> <div>3:00 Tipping Point (PG) [s]</div> <div>4:00 NINE's Afternoon News [s]</div> <div>5:00 Millionaire Hot Seat [s]</div> <div>6:00 NINE News [s]</div> <div>7:00 A Current Affair (PG) [s]</div> <div>7:30 RBT: No Cakes Today/ Designated Driver (PG) [s]</div> <div>8:30 Emergency: Triple Tank Throwdown! (M) [s] – Dr Mark tries to help a car crash patient under police guard, but the man appears to be hiding something suspicious in his underpants.</div> <div>9:30 Botched (M) [s]</div> <div>10:30 NINE News Late [s]</div> <div>11:00 New Amsterdam (M) [s]</div> <div>11:50 Dr Miami: Pretty Kitty (M) [s]</div> <div>12:40 Tipping Point (PG) [s]</div> <div>1:30 A Current Affair (PG) [s]</div> <div>2:00 Home Shopping</div>	<div>6:00 Headline News [s]</div> <div>8:30 Studio 10 (PG) [s]</div> <div>12:00 Dr Phil (PG) [s]</div> <div>1:00 Program To Be Advised</div> <div>2:30 Entertainment Tonight [s]</div> <div>3:00 Judge Judy (PG) [s]</div> <div>3:30 My Market Kitchen [s]</div> <div>4:00 Everyday Gourmet [s]</div> <div>4:30 The Bold And The Beautiful (PG) [s]</div> <div>5:00 10 News First [s]</div> <div>6:00 WIN News [s]</div> <div>6:30 The Project (PG) [s]</div> <div>7:30 Bachelor In Paradise (M) [s]</div> <div>9:00 Tommy: The Swatting Game (M) [s] – Tommy must find a criminal who makes fake 911 calls; the perpetrator threatens to reveal private information about members of the police force.</div> <div>10:00 Bull: Justice For Cable (M v) [s]</div> <div>11:00 WIN's All Australian News [s]</div> <div>12:00 The Project (PG) [s]</div> <div>1:00 The Late Show (PG) [s]</div> <div>2:00 Home Shopping</div>	<div>5:00 CGTN English News</div> <div>5:15 NHK World English News</div> <div>5:30 Worldwatch</div> <div>1:00 PBS Newshour</div> <div>2:00 Untold Australia (M I)</div> <div>3:05 Great British Railway Journeys (PG)</div> <div>3:40 Insight</div> <div>4:40 Tony Robinson's Coast To Coast</div> <div>5:30 Letters And Numbers</div> <div>6:00 Mastermind Australia</div> <div>6:30 SBS World News</div> <div>7:30 Warrior Women With Lupita Nyong'o (M) (In English/ Fon/ French/ Yoruba)</div> <div>8:30 10 Mistakes That Sunk The Titanic (PG)</div> <div>9:30 Luther (MA15+)</div> <div>10:30 SBS World News Late</div> <div>11:00 24 Hours In Emergency (M I)</div> <div>12:05 Movie: "C'est La Vie" (M I,s) ('17) Stars: Jean-Pierre Bacri, Benjamin Lavernhe (In French)</div> <div>2:05 Gigantes (MA15+) (In Spanish)</div> <div>4:00 Heston's Feasts</div>
	Also see: ABC COMEDY (Channel 22) ABC ME (Channel 23) ABC NEWS (Channel 24)	Also see: 7TWO (Channel 62) 7MATE (Channel 63) 7FLIX (Channel 66) 7FOOD (Channel 74)	Also see: GEM (Channel 82) GO! (Channel 83/88) LIFE (Channel 84)	Also see: 10 PEACH (Channel 11) 10 BOLD (Channel 12)	Also see: SBS VICELAND (Channel 31) SBS MOVIES (Channel 32) SBS FOOD (Channel 33) SBS NITV (Channel 34)

Classifications: (G) General, (PG) Parental Guidance, (M) Mature Audiences, (MA15+) Mature Audience Over 15 Years, [s] Subtitles  
Consumer Advice: (d) drug references, (s) sexual references or sex scenes (h) horror, (I) language, (mp) medical procedures, (n) nudity, (v) violence



Linda Emery  
Lawyer  
Since 1983

Hospital &  
Home Visits  
By Appointment

Specialising in:

FAMILY LAW

- Divorces
- Children's Issues
- Binding Financial Agreements
- De facto
- Property

WILLS & ESTATES

- Probate, Wills & Disputes
- Power of Attorney
- Enduring Guardianship

So much more than just law...



Linda Emery  
& ASSOCIATES PTY LTD

LAWYERS & CONVEYANCERS

Ground Floor, Suite 6, 22 Watt St Gosford

CONVEYANCING

- Purchase & Sale of Property
- Refinancing Mortgages
- Purchase & Sale of Business
- Leasing
- Retirement Villages

COURT APPEARANCES

- Criminal Law
- Traffic Matters
- AVO Matters
- Drink Driving

4323 4766

Email: [lemery@lindaemery.com.au](mailto:lemery@lindaemery.com.au)  
Web: [www.lindaemery.com.au](http://www.lindaemery.com.au)



	ABC (C20/21)	PRIME (C61/60)	NINE (C81/80)	TEN (C13)	SBS (C30)
Thursday 30 July	<p>6:00 News Breakfast [s] 9:00 ABC News Mornings [s] 10:00 Planet America [s] 10:30 Back Roads [s] 11:00 The Repair Shop [s] 12:00 ABC News At Noon [s] 1:00 Hard Quiz (PG) [s] 1:30 The Weekly [s] 2:00 Call The Midwife (M v) [s] 3:00 ABC News Afternoons [s] 4:15 Think Tank [s] 5:10 The Repair Shop [s] 6:00 The Drum [s] 6:55 Sammy J [s] 7:00 ABC News [s] 7:30 7.30 [s] 8:00 The Heights (PG) [s] 8:30 Escape From The City [s] 9:30 Kurt Fearnley's One Plus One: Josh Niland [s] 10:00 Would I Lie To You? (PG) [s] 10:30 ABC Late News [s] 11:00 When Louis Met Paul And Debbie (PG) [s] 11:50 Louis Theroux: Louis And The Brothel (M I) [s]</p>	<p>6:00 Sunrise [s] 9:00 The Morning Show (PG) [s] 11:30 Seven Morning News [s] 12:00 Movie: "19th Wife" (M v,s) ('10) Stars: Chyler Leigh, Matt Czuchry, Alexia Fast 2:00 Program To Be Advised 3:00 The Chase UK [s] 4:00 Seven News At 4 [s] 5:00 The Chase Australia [s] 6:00 Seven News [s] 7:00 Home And Away (PG) [s] 7:30 Movie: "Harry Potter And The Deathly Hallows - Part 1" (PG) ('10) – Harry, Ron and Hermione set out on their perilous mission to track down and destroy the secret to Voldemort's immortality and destruction, the Horcruxes. Stars: Alan Rickman, Daniel Radcliffe, Emma Watson 10:15 The Latest Seven News [s] 10:45 Program To Be Advised 11:45 Home To Be Advised 12:30 Home Shopping</p>	<p>5:30 Today [s] 9:00 Today Extra [s] 11:30 NINE's Morning News [s] 12:00 Ellen (PG) [s] 1:00 Movie: "If I Stay" (M) ('14) Stars: Chloë Grace Moretz, Jamie Blackley, Mireille Enos, Liana Liberato, Joshua Leonard, Stacy Keach 3:00 Tipping Point (PG) [s] 4:00 NINE's Afternoon News [s] 5:00 Millionaire Hot Seat [s] 6:00 NINE News [s] 7:00 A Current Affair (PG) [s] 7:30 NRL: St George Illawarra Dragons v South Sydney Rabbitohs *Live* From Netstrata Jubilee Stadium [s] 9:45 Golden Point (M) [s] 10:30 NINE News Late [s] 11:00 Murdered By Morning: Mother's Day Murder (M) [s] 11:50 The Fix: Lie To Me (M v) [s] 12:40 Tipping Point (PG) [s] 1:30 Home Shopping 4:00 Ellen (PG) [s]</p>	<p>6:00 Headline News [s] 8:30 Studio 10 (PG) [s] 12:00 Dr Phil (PG) [s] 1:00 Program To Be Advised 2:30 Entertainment Tonight [s] 3:00 Judge Judy (PG) [s] 3:30 My Market Kitchen [s] 4:00 Everyday Gourmet With Justine Schofield [s] 4:30 The Bold And The Beautiful (PG) [s] 5:00 10 News First [s] 6:00 WIN News [s] 6:30 The Project (PG) [s] 7:30 Celebrity Gogglebox USA (M) 8:30 Law &amp; Order: SVU: She Paints For Vengeance (M) [s] 9:30 Law &amp; Order: SVU: Revenge (M) [s] 10:30 Blue Bloods: Black Out (M) [s] 11:30 WIN's All Australian News [s] 12:30 The Project (PG) [s] 1:30 The Late Show With Stephen Colbert (PG) [s] 2:30 Home Shopping 5:00 The Talk (PG) [s]</p>	<p>5:00 CGTN English News 5:15 NHK World English News 5:30 Worldwatch 1:00 PBS Newshour 2:00 Over The Black Dot 3:00 First Australians (PG) 4:35 Tony Robinson's Coast To Coast 5:30 Letters And Numbers 6:00 Mastermind Australia 6:30 SBS World News 7:35 Hitler's Supercars (PG) – Hitler's Supercars interweaves the rise of the Third Reich with the racing exploits it funded, and what propaganda messages these racing cars where sending. 8:30 The Day Hitler Died (PG) 9:30 War Of The Worlds (MA15+) (In English/ French) 10:25 SBS World News Late 11:00 Tin Star (M I,v) 11:50 Asylum City (M) (In Hebrew) 4:00 Full Frontal With Samantha Bee (MA15+)</p>
Friday 31 July	<p>6:00 News Breakfast [s] 9:00 ABC News Mornings [s] 10:00 Foreign Correspondent [s] 10:30 Kurt Fearnley's One Plus One 11:00 The Repair Shop [s] 12:00 ABC News At Noon [s] 1:00 Shaun Micallef's On The Sauce (M) [s] 2:00 Call The Midwife (M) [s] 3:00 ABC News Afternoons [s] 4:15 Think Tank [s] 5:10 The Repair Shop [s] 6:00 The Drum [s] 7:00 ABC News [s] 7:30 Monty Don's French Gardens: The Artistic Gardens [s] – Monty turns to France's famous artistic tradition to see what influence it has had on the country's gardens. 8:30 MotherFatherSon (MA15+) [s] 9:30 Marcella (M v) [s] 10:45 The Virus [s] 11:10 The Weekly With Charlie Pickering [s] 11:40 rage (MA15+) [s]</p>	<p>6:00 Sunrise [s] 9:00 The Morning Show (PG) [s] 11:30 Seven Morning News [s] 12:00 Movie: "Oscar Pistorius: Blade Runner Killer" (M v,s) ('17) Stars: Andreas Damm 2:00 Program To Be Advised 3:00 The Chase UK [s] 4:00 Seven News At 4 [s] 5:00 The Chase Australia [s] 6:00 Seven News [s] 7:00 Better Homes And Gardens 7:30 Program To Be Advised 8:30 Movie: "Under The Tuscan Sun" (PG) ('03) – Frances Mayes, a 35-year-old San Francisco writer, gets a divorce that leaves her with terminal writer's block and depression. Later, she decides to buy a house in Tuscany in order to change her life. Stars: Diane Lane, Sandra Oh 10:30 Program To Be Advised 11:50 Program To Be Advised 12:30 Home Shopping</p>	<p>5:30 Today [s] 9:00 Today Extra (PG) [s] 11:30 NINE's Morning News [s] 12:00 Ellen (PG) [s] 1:00 Movie: "St Vincent" (M v,s,l) ('14) Stars: Bill Murray, Melissa McCarthy, Naomi Watts 3:00 Tipping Point (PG) [s] 4:00 NINE's Afternoon News [s] 5:00 Millionaire Hot Seat [s] 6:00 NINE News [s] 7:00 A Current Affair (PG) [s] 7:30 NRL: Brisbane Broncos v Cronulla Sharks *Live* From Suncorp Stadium [s] 9:45 Friday Night Knock Off [s] 10:35 Movie: "Dragon: Bruce Lee Story" (M) ('93) Stars: Jason Scott Lee, Lauren Holly, Robert Wagner, Michael Learned, Nancy Kwan, Kay Tong Lim 1:05 Award Winning Tasmania: Spirit Of Tasmania (Part 2) [s] 1:30 Home Shopping 4:30 The Avengers: Epic (PG) [s] 5:30 A Current Affair (PG) [s]</p>	<p>6:00 Headline News [s] 8:30 Studio 10 (PG) [s] 12:00 Dr Phil (PG) [s] 1:00 The Living Room [s] 2:00 Entertainment Tonight [s] 2:30 Judge Judy (PG) [s] 3:30 My Market Kitchen [s] 4:00 Everyday Gourmet With Justine Schofield [s] 4:30 The Bold And The Beautiful (PG) [s] 5:00 10 News First [s] 6:00 WIN News [s] 6:30 The Project (PG) [s] 7:30 The Living Room [s] 8:30 Have You Been Paying Attention? (M) [s] – Have our contestants been paying attention? 9:30 Program To Be Advised 10:00 Celebrity Gogglebox USA (M) 11:00 WIN's All Australian News [s] 12:00 The Project (PG) [s] 1:00 The Late Show With Stephen Colbert (PG) [s] 2:00 Home Shopping</p>	<p>5:00 CGTN English News 5:15 NHK World English News 5:30 Worldwatch 1:00 PBS Newshour 2:00 Native America (PG) 3:00 NITV News: Nula 3:30 Governor Macquarie's Silent Witness (PG) (In English/ Hindi) 3:40 Building The Tube: The Piccadilly Line (PG) 4:35 Tony Robinson's Coast To Coast (PG) 5:30 Letters And Numbers 6:00 Mastermind Australia 6:30 SBS World News 7:30 The Day Kennedy Died (PG) 8:30 Movie: "Marshall" (M) ('17) Stars: Chadwick Boseman 10:40 SBS World News Late 11:10 The Late Session: Storytelling (M I) 12:10 Eight Days That Made Rome (M s,v) 3:30 Full Frontal With Samantha Bee (MA15+)</p>
Saturday 1 August	<p>6:00 rage (PG) [s] 7:00 Weekend Breakfast [s] 10:00 rage Guest Programmer (PG) 12:00 ABC News At Noon [s] 12:30 The Sound [s] 1:30 When Louis Met Paul And Debbie (PG) 2:30 Back In Time For Dinner [s] 3:30 Escape From The City [s] 4:30 Landline [s] 5:00 Football: A-League: Melbourne City v Sydney FC *Live* From Olympic Stadium [s] 7:00 ABC News [s] 7:30 Shakespeare And Hathaway: Teach Me, Dear Creature (PG) 8:15 Les Miserables (M v) [s] 9:20 Thirteen (M I) [s] – The police investigation makes some breakthroughs but Carne and Merchant find themselves on opposing sides. Ivy's family life implodes as lies are uncovered. 10:20 The Good Karma Hospital (M) 11:10 rage Guest Programmer (MA15+) [s]</p>	<p>6:00 Home Shopping 7:00 Weekend Sunrise [s] 10:00 The Morning Show - Weekend (PG) [s] 12:00 Beach Cops (PG) [s] 12:30 Weddings Make You Laugh Out Loud (PG) [s] 1:30 Program To Be Advised 3:00 Program To Be Advised 4:00 Better Homes And Gardens (PG) [s] 5:00 Seven News At 5 [s] 5:30 Border Security - Australia's Front Line (PG) [s] 6:00 Seven News [s] 7:00 Border Patrol (PG) [s] 7:30 Movie: "Mission Impossible: Rogue Nation" (M v) ('15) Stars: Alec Baldwin, Jeremy Renner 10:00 Movie: "Wrath Of The Titans" (M v) ('12) Stars: Sam Worthington, Liam Neeson, Ralph Fiennes, Edgar Ramirez 12:00 Criminal Minds - Suspect Behaviour: Two Of A Kind (M) 12:30 Home Shopping</p>	<p>6:00 Ellen (PG) [s] 7:00 Weekend Today [s] 10:00 Today Extra - Saturday [s] 12:00 Award Winning Tasmania: Freycinet (Part 2) (PG) [s] 12:30 Animal Embassy: Clownfish White Tiger [s] 1:00 Explore: Paddock [s] 1:10 Australian Ninja Warrior (PG) 3:00 Netball: Suncorp Super Netball *Live* [s] 5:00 NINE News: First At Five [s] 5:30 Getaway (PG) [s] 6:00 NINE News Saturday [s] 7:00 A Current Affair (PG) [s] 7:30 Movie: "Daddy's Home 2" (PG) ('17) Stars: Will Ferrell 9:30 Movie: "Blockers" (MA15+) ('18) Stars: Leslie Mann 11:30 Movie: "Cheech And Chong's The Corsican Brothers" (M v,s,l) ('84) Stars: Cheech Marin 1:10 Australia's Top Ten Of Everything: Comic Characters (M) [s] 2:00 Home Shopping</p>	<p>6:00 Unknown Road Adventures 6:30 Entertainment Tonight [s] 7:00 Escape Fishing With ET [s] 7:30 What's Up Down Under? [s] 8:00 All 4 Adventures [s] 9:00 Which Car (PG) [s] 9:30 Studio 10 Saturday (PG) [s] 12:00 Program To Be Advised 12:40 Farm To Fork [s] 1:00 The Living Room [s] 2:00 Pooches At Play [s] 2:30 Good Chef Bad Chef [s] 3:00 What's Up Down Under? [s] 3:30 Everyday Gourmet With Justine Schofield [s] 4:00 Farm To Fork [s] 4:30 Taste Of Australia With Hayden Quinn [s] 5:00 10 News First [s] 6:00 Bondi Rescue (PG) [s] 7:00 The Children's Hospital (PG) 7:30 Ambulance UK (PG) [s] 10:00 Beecham House (M) [s] 11:00 FBI: The Lives Of Others (M) [s] 12:00 Law &amp; Order: SVU: The Good Girl (M v) [s]</p>	<p>5:00 CGTN English News 5:15 NHK World English News 5:30 Worldwatch 1:00 PBS Newshour 2:00 Bollywood: World's Biggest Film Industry (PG) (In English/ Hindi) 4:05 Gadget Man: Staying In 4:30 Miracle At Sea 5:30 WWII - Battles For Europe: Battle For The Scheldt (PG) 6:30 SBS World News 7:35 Chris Tarrant's Extreme Railway Journeys: A Railway Too Far? (PG) 8:30 Movie: "The King's Speech" (M) ('10) Stars: Colin Firth, Helena Bonham Carter, Derek Jacobi, Robert Portal 10:35 On The Ropes: The Fire/ No Returns/ In Fighting/ The Truth (M I,v) (In English/ Arabic) 4:25 Trump's Showdown: Trump's Law (PG) 4:30 Full Frontal With Samantha Bee (MA15+)</p>
Sunday 2 August	<p>6:00 rage (PG) [s] 7:00 Weekend Breakfast [s] 9:00 Insiders [s] 10:00 Offsiders [s] 10:30 The World This Week [s] 11:00 Compass (PG) [s] 11:30 Songs Of Praise [s] 12:00 ABC News At Noon [s] 12:30 Landline [s] 1:30 Monty Don's French Gardens 2:30 Restoration Australia (PG) [s] 3:30 Silvia's Italian Table [s] 4:00 Todd Sampson's Life On The Line: Friction (PG) [s] 4:30 The Mix [s] 5:00 Hard Quiz (PG) [s] 5:30 The Sound [s] 6:30 Compass (PG) [s] 7:00 ABC News Sunday [s] 7:40 Shetland (M I,v) [s] 8:40 Vera: The Seagull (M) [s] 10:15 Vanity Fair: In Which Becky Joins Her Regiment (PG) [s] 11:00 The Blechley Circle: San Francisco: Madhouse (M v) [s] 1:50 rage (MA15+) [s]</p>	<p>6:00 Home Shopping 7:00 Weekend Sunrise [s] 10:00 The Morning Show - Weekend 12:00 House Of Wellness [s] 1:00 World's Most Extreme: World's Most Extreme Roads [s] 2:00 Program To Be Advised 4:00 Better Homes And Gardens 5:00 Seven News At 5 [s] 5:30 Sydney Weekender [s] 6:00 Seven News [s] 7:00 Program To Be Advised 8:30 Program To Be Advised 9:30 Program To Be Advised 10:30 Autopsy USA: Muhammad Ali (M) [s] – Muhammad Ali's death following a battle with Parkinsons and years in the boxing ring is examined. 11:30 Absentia: Casualties (MA15+) [s] – Emily struggles to make sense of her past, including her time held captive. Special Agent Nick Durand is sent to investigate a terrorist attack. 12:30 Home Shopping</p>	<p>6:00 Animal Tales [s] 7:00 Weekend Today [s] 10:00 Sports Sunday (PG) [s] 11:00 Sunday Footy Show (PG) [s] 1:00 Netball: Suncorp Super Netball 3:00 NRL: Melbourne Storm v Newcastle Knights *Live* From Suncorp Stadium [s] 6:00 NINE News Sunday [s] 7:00 Australian Ninja Warrior (PG) [s] – Eight former grand finalists are among those battling for the last 16 semi-final spots, with the two fastest Ninjas of the night facing off on the all new Power Tower. 8:50 60 Minutes (PG) [s] 9:50 NINE News Late [s] 10:50 Cold Case - New Leads Wanted: Kayo Matsuzawa (M) 11:50 Mysteries And Scandals: The Chippendales Murder (M v,s) [s] 12:40 Timeless: Hollywoodland (M) 1:30 Hayley &amp; Lauren's Adelady [s] 2:00 Home Shopping 2:30 Skippy - The Bush Kangaroo</p>	<p>6:00 Religious Programs [s] 7:30 Fishing Australia [s] 8:00 Taste Of Australia With Hayden Quinn [s] 8:30 The Living Room (PG) [s] 9:30 Studio 10 Sunday (PG) [s] 12:00 Program To Be Advised 1:30 Good Chef Bad Chef [s] 2:00 Farm To Fork [s] 2:30 Australia By Design [s] 3:30 Everyday Gourmet With Justine Schofield [s] 4:00 Which Car (PG) [s] 4:30 RPM [s] 5:00 10 News First [s] 6:00 WIN News [s] 6:30 The Sunday Project (PG) [s] 7:30 Bachelor In Paradise (M) [s] 9:00 FBI: American Idol (M v) [s] – A front-running female presidential candidate is targeted with a car bomb. 10:00 FBI: Scorched Earth (M v) [s] 11:00 NCIS: Voices (M) [s] 12:00 The Sunday Project (PG) [s] 1:00 Home Shopping</p>	<p>5:00 CGTN English News 5:15 NHK World English News 5:30 Worldwatch 1:00 Speedweek 3:00 Destination Flavour China Bitesize 3:10 Running Wild With Uzo Aduba (PG) 3:55 Sport: Fair Game 5:00 Cycling: Incycle 5:30 WWII - Battles For Europe: Battle For The Siegfried Line (PG) (In English/ German) 6:30 SBS World News 7:30 The Day They Dropped The Bomb (M) 8:30 America's Great Divide: Obama To Trump (M v) 10:35 Gunned Down: The Power Of The NRA (M) 11:35 John Pilger: The Dirty War On The NHS (M) 1:35 How To Lose Weight Well (PG) 4:20 Full Frontal With Samantha Bee (MA15+)</p>
	<p>Also see: ABC COMEDY (Channel 22) ABC ME (Channel 23) ABC NEWS (Channel 24)</p>	<p>Also see: 7TWO (Channel 62) 7MATE (Channel 63) 7FLIX (Channel 66) 7FOOD (Channel 74)</p>	<p>Also see: GEM (Channel 82) GO! (Channel 83/88) LIFE (Channel 84)</p>	<p>Also see: 10 PEACH (Channel 11) 10 BOLD (Channel 12)</p>	<p>Also see: SBS VICELAND (Channel 31) SBS MOVIES (Channel 32) SBS FOOD (Channel 33) SBS NITV (Channel 34)</p>





# Central Coast NEWSPAPERS

## Other Regional News - In brief

Peninsula News focuses on news specifically relating to post code areas 2256 and 2257. Given the advent of the new Central Coast Council, following is a summary of the first 9 news articles published in the most recent edition of each of our sister Central Coast publications. The full articles and

more, as well as all previously published editions, can be seen on line on our website and on [www.coastcommunitynews.com.au](http://www.coastcommunitynews.com.au). Copies of these other publications may be obtained from our offices in Gosford, by subscription, or from a myriad of locations in the areas covered by each publication.



## COAST COMMUNITY CHRONICLE

*Voice of the north*

22 JULY 2020

REAL INDEPENDENT LOCAL WEEKLY NEWS

ISSUE 198

### Coast reels from wild weather

Wild weather lashed the north of the Central Coast on July 12, with heavy rain, thunder and lightning putting on a sky show and hail carpeting Gwandalan like snow.

### Residents allowed to do emergency work to protect storm affected properties

Beachfront residents at The Entrance North and Wamberal have been given direction on what emergency work they can do in the wake of the beach erosion caused by a low pressure system bringing wild weather and heavy seas

### Carters Rd carpark will help but is not the answer

Lake Munmorah Progress Association Secretary, Stuart Durie, has welcomed plans for an extra car park in Carters Rd, but isn't sure that it will alleviate traffic flow.

### 30,000 tonnes of M1 rubble re-purposed

More than 30,000 tonnes of rubble that was once part of the M1 Pacific Motorway has been used to upgrade a network of Charmhaven fire trails and others across the Central Coast.

### Labor MPs claim misdirection of over \$100M of council merger grants

Labor MPs on the Central Coast have claimed that money meant to support NSW councils with extra costs of amalgamation, including Central Coast Council, has instead been redirected to councils in Coalition-held electorates

### 87 percent of Kangy Angy biodiversity offset requirements have not been met

Transport for NSW has confirmed that it has met only 13 percent of its biodiversity offset requirements to compensate for the loss of habitat for endangered bird species in the construction of the rail maintenance facility at Kangy Angy.

### Garden competition Entries are now open

The Wyong District Garden Competition is back for its 47th instalment and entries are now open.

### World leading shark management technology to be introduced

Beachgoers at The Entrance North and Avoca will be better protected this summer with an expansion of sharkspotting aerial surveillance by drone cameras.

### 50 percent discount off senior pets for senior citizens

Senior citizens looking for a pet can take advantage of a 50 percent discount on adoption fees for senior pets at RSPCA shelters.

Coast Community Chronicle focuses on news specifically relating to post code areas 2258, 2259, 2261, 2262, & 2263. The full articles and more can be seen on our website [www.coastcommunitynews.com.au](http://www.coastcommunitynews.com.au)



## COAST COMMUNITY NEWS

24 JULY 2020

REAL INDEPENDENT LOCAL WEEKLY NEWS

ISSUE 252

### Man vs Ocean

Residents from 18 beachfront homes at Wamberal remain locked out of their properties as the State Government and Central Coast Council install emergency measures to prevent even more erosion after heavy seas battered the coastline

### JobKeeper extension brings happiness to the arts and hospitality sectors

For many Central Coast businesses, an extension of the JobKeeper program announced this week by the Federal Government could prove to be the difference between staying afloat and going under.

### Details of \$3M tobacco haul in April released

A haul of illicit tobacco worth more than \$3M was seized at Peats Ridge in April and destroyed in a major operation by the Australian Taxation Office (ATO).

### Authorities mull engineering options for Wamberal Beach

Several options for a longterm solution to erosion at Wamberal Beach, including a revetment wall along the beachfront, are under consideration as Central Coast Council weathers accusations of inaction on a situation which has been escalating

### Calls to declare Wamberal Beach erosion a natural disaster

Central Coast Council has declared a local emergency and given direction on what emergency work residents at Wamberal and North Entrance can do on private property in the wake of the erosion from the week's events.

### Wamberal beachfront defence begins

An emergency operation swung into action on Thursday to stabilise the beachfront at Wamberal, after heavy storms last week saw homes destabilised and decks crumbling into the sea, with residents of 18 homes evacuated on

### Upgrade to Niagara Park Station approved

It's all systems go at Niagara Park railway station, with a major upgrade receiving planning approval last week.

### More debris from APL England washes ashore

Debris from the APL England shipping container incident in May continues to wash up on Central Coast beaches.

### Labor calls for a top-up to disability and carer support payments

Central Coast based Labor Senator Deborah O'Neill has added her voice to calls from the Australian Greens for extra economic support for people on the Disability Support Pension (DSP) and Carer Payment.

The full articles and more can be seen on line on our website [www.coastcommunitynews.com.au](http://www.coastcommunitynews.com.au). Coast Community News focusses on news specifically related to post code areas 2250, 2251, 2260

## Forum

# Councillors give themselves a pay rise

## Surprise, surprise. Central Coast councillors have given themselves a pay rise.

It was not the least amount they could have received or even half the amount.

No, it was the full, go for broke, 100 percent rate.

At this time, when thousands have lost their job or had their hours cut, regardless of their suffering, the councillors take the money.

Now, of course, our hard-working, nose-to-the-grindstone representatives have not been idle.

While some of us have been wondering where our next meal is coming from, they have been hard at it.

Look at some of their

## Forum

achievements - lots more non-complying building applications approved; devising plans and having meetings to resolve the beach erosion at Wamberal and other parts of the coastline without doing anything to fix it; approving plans for a \$7 million roundabout at Ettalong.

How can a roundabout cost anywhere near that amount?

No, my fellow ratepayers they have not been idle - the list is extensive.

I just think that in these hard times a little constraint would have gone a long way.

Email, 21 Jul 2020  
Laurie Powell, Woy Woy

# Darkinjung proposal will have impact on Woy Woy

## If you believe the proposed Darkinjung 70-lot subdivision at Kariong will only impact residents in that area, be assured fallout will extend over many a ridge and gully.

For example, use of Woy Woy Rd, which will require an interchange not only for the residents but also for emergency vehicles called to action to fight the inevitable fires.

Woy Woy has been identified as a centre of growth.

How many additional vehicles will occupy this main network, from Woy Woy area and the wider transport catchment?

In a recent issue of Peninsula News, irregularities in growth projections were identified.

Will traffic management studies associated with the proposal include traffic volume calculations covering the plethora of possibilities?

Due to the location of the Woy Woy Rd interchange, costs will exceed standard construction costs with a requirement of installing additional safety equipment, warning lights and alarms.

Who will be responsible for costs to meet increased safety

## Forum

### LETTERS TO THE EDITOR

should be sent to:

**Peninsula News**

PO Box 1056, Gosford 2250 or  
[editorial@centralcoastnews.net](mailto:editorial@centralcoastnews.net)

See Page 2 for  
contribution conditions

standards?

This is only one item of many that will have a cost blowout.

Already the scene is set for a repeat of the argy-bargy financial disputes associated with the Ettalong dredging finger-pointing.

If you are driving past the site for the proposed subdivision, consider the future changes to the road network and the impact it will have on time and safety.

It is your time and safety at stake.

Woy Woy Rd is a known accident black spot, and any closure is a disaster.

Letter, 5 July 2020  
Norman Harris, Umina Beach

WE TAKE THE HASSLE OUT OF OWNING A POOL OR SPA

**Crystal Clear POOL SHOP**

ONLY POOL SHOP ON THE PENINSULA

FOR THE BEST ALL ROUND POOL AND SPA SERVICING

11 Mutu Street, Woy Woy - [crystalclearpoolshop.com.au](http://crystalclearpoolshop.com.au) - PH: 43 422 422



## Council is removed from realities of the times

### No doubt about our council.

While Australia is facing the worst economic crisis ever and tens of thousands of people have lost their jobs; while numerous unemployed tenants are facing eviction and many landlords are no longer able to service their investment loans; while many corporations and businesses are facing liquidation and bankruptcies, and millions of people are seeking help with their power bills, what has our council done?

### Forum

It has decided to increase our rates by the maximum percentage allowed by the state government and our esteemed councilors are seeking an increase in their already generous allowances.

How disgusting and how far removed from the realities of these difficult times.

Letter, 14 July 2020  
Fred Landman, Daley's Point

I, for one, wouldn't want my name tagged to the expenditure of \$7 million for building a new roundabout at Picnic Pde, Ettalong ("Crouch defends need for \$7 million roundabout" Peninsula News 498).

More so, when it is blatantly obvious that there are far more important problems within the Peninsula that need rectification.

For \$7 million, you could comfortably build 23 four-bedroom, two-bathroom and double garage

homes on government-owned land, therefore providing housing for roughly 100 people.

The \$7 million is a lot to spend on a giant blob of concrete when surely public safety could be well achieved with a set of traffic lights, similar to those at Daleys Point.

Regardless of whether we vote Liberal or Labor, it is our taxes that are paying the bill and our government representatives should pay greater attention as to where our taxpayers money is going.

Email, 14 Jul 2020  
Rod Fountain, Booker Bay

### Forum

### LETTERS TO THE EDITOR

should be sent to:

**Peninsula News**

PO Box 1056, Gosford 2250 or  
editorial@centralcoastnews.net

See Page 2 for  
contribution conditions

## Real work of council languishes in the doldrums

In June 2017, we were promised that the Woy Woy Town Centre Master Plan would be finished by June 2020.

At the time, I wrote that this was an absurdly long time-frame for such a simple project ('Leisurely does it' is council watchword, Peninsula News 24 Jul 2017), but here we are, three years later, and the Woy Woy Plan still appears to be as distant as a mirage.

Heaven help us, if the Council ever had to tackle a complicated planning problem.

Councillors seem to have no problem in deciding immediately on the maximum permissible recompense for themselves or on maximum permissible increases

### Forum

in rates (and let us remember that these increased rates are levied on recently increased land values, making them a double impost), but the real work of the Council languishes in the doldrums.

The crowning insult is that we now have to put up with this situation for an extra year, on the pathetic justification that we are incapable of organizing an election at the same time as we cope with a virus.

I say that councillors should have to demonstrate their competence, before they are allowed to award themselves payments.

Email, 22 Jul 2020  
Bruce Hyland, Woy Woy

Adam Crouch has again displayed how incredibly out of touch with reality he is, in defending the need for a roundabout on Empire Bay Dr and Picnic Pde (Peninsula News 498).

Has he ever driven this route in peak hour? I suspect not.

And what congestion at Picnic Pde? The only congestion is at the roundabout at Barrenjoey Rd.

If it is so needed, why the urgency to defend the need for this waste of money.

The roads on the Peninsula are a disgrace, positively dangerous on many streets, as any local

### Forum

knows.

One shakes the head at this incompetence.

This money should be spent where it's needed which is on our ever-decaying local road network, no committees, no delays. It is so simple.

We will have another glossy brochure in our rates notice and Adam Crouch will crow "Look what I have done for the Peninsula" at election time.

Has he driven around Woy Woy or Umina? I think not, Terrigal seems to be the priority.

Again our politicians seem to have their own agendas. What is he not telling us?

Can they be so blind to what the real priorities are?

Surely the safety of our local drivers are Mr Couch's main priority, but it seems not.

They are not listening.

I wonder if they even care.

If Adam Crouch really cares, he should be pushing heaven and earth to secure funding to fix the Peninsula's roads, not defending the indefensible.

The incompetence continues.

Email, 13 Jul 2020  
Brian Lewis, Umina Beach



## FULLY-FURNISHED OFFICE SUITES FOR ANY TYPE OF BUSINESS.

Nexus Business Hub in Wyong is unmatched for contemporary office spaces on the Central Coast. Enjoy the same benefits usually reserved for large corporates at a fraction of the cost. Go about your day-to-day business with an exclusive concierge service, the fastest internet on the Coast and a host of other benefits, all from the luxury of your own dedicated suite.

With flexible lease terms available, there's an office waiting to be configured to your specifications.

Book a personal tour at [nexushub.com.au](http://nexushub.com.au)

- > Flexible lease terms
- > Complimentary gym
- > On-site parking
- > Concierge service
- > Meeting rooms
- > Business class lounge





## Christmas in July aids Mary Mac's Place

The Rotary Club of Woy Woy met on Tuesday, July 14, for a "Christmas in July" dinner at Everglades Country Club.

They brought with them donations for Mary Mac's Place, which provides support and meals for the homeless, transient and disadvantaged.

"Our Christmas in July event was an excuse to drag out the tinsel, fairy lights and gaudy outfits and have some fun," said club

president Ms Joan Redmond.

"Although a Covid-Christmas meant no hugs, handshakes or group photos, we truly appreciated what we had; good food, plenty of laughter and the opportunity to be together.

"We ditched the idea of giving Secret Santa gifts to each other and instead directed our giving to help those in our community who needed a helping hand.

"We heard that Mary Mac's Place wanted to stock their pantry

so they could continue to provide daily take-away meals and rescue food for the needy.

"Our members donated a car-load of supplies, both fresh and long-life.

"Perishable food was refrigerated overnight and, on Wednesday morning, we delivered the donations to a very grateful Mary Mac's."

SOURCE:

Media Release, 18 July 2020  
Sue Tee, Rotary Club of Woy Woy

## 'Collection dog' to raise money for Guide Dogs

A model of a Guide Dog used for donation collections has been installed at Ettalong.

The "collection dog" has been placed at the entrance to the Ettalong Diggers Club, so that visitors can make donations to the Central Coast Support Group of the Guide Dogs NSW/ACT. It will be known as Little Digger.

Ettalong Diggers Club chairman Mr John Wood said he was delighted to take delivery of Little Digger from Pearl Beach resident Mr Dale Cleaver, who is Guide Dogs NSW/ACT chief executive.

Mr Cleaver presented the collection dog on behalf of the Central Coast Volunteer Support Group which has been active since 1982.

Mr Wood presented a \$350 cheque from recent funding raising for Guide Dogs.

"The Central Coast Volunteer Group manages a number of fundraising stalls at shopping

centres selling merchandise and providing information on how guide dogs provide services at no cost to people who are blind or have low vision," Mr Cleaver said.

"To breed, train and raise one guide dog costs more than \$50,000 a year and every dollar from the community counts as Guide Dogs NSW/ACT only receives minimal government funding."

Current activities currently being undertaken include puppy raising, guide dog training, and programs such as Pets As Therapy and White Cane Mobility.

"The local community is extremely generous donating to iconic guide dog collection dogs like Little Digger and others are situated in shops and other clubs across the Coast," Mr Cleaver said.

SOURCE

Media release, 21 Jul 2020  
Lynne Lillico, Guide Dogs NSW-  
ACT Central Coast Support Group

## SOUTH STREET DENTAL

### WE REMAIN OPEN DURING THE CORONAVIRUS CRISIS

**Mario**

**Reznik**

BDS (Hons) Syd

Dip.Clin.Dent (Implants) Syd

Dental Surgeon

**Eddie**

**Reznikas**

Reg.Dental Technician

Dentures

- Teeth for Life • Cosmetic Smiles • Teeth Whitening • Children and Adults
- Complex Reconstruction • Implants • Dentures

52 South Street Umina Beach

4344 6699



Ettalong Diggers chairman Mr John Woods (left) presents a cheque to Guide Dogs chief executive Mr Dale Cleaver

**GRAB A QUICK MEAL TODAY**  
**STARTING FROM \$2.00**



FREE DELIVERY

0410525153



HEAT'N'EAT meals are cooked to order.

**Gluten Free meals Available**



# Aged care facility set to open in August

**A new 114-bed aged care facility is expected to open in Umina within the next month.**

Peninsula Villages chief executive Mr Shane Neaves said that its "ageing-in-place" development, Pozieres House, was nearing completion.

He said the development was made up of 111 one-bed premium rooms and three executive suites, all with private ensuites.

"The development includes an on-site beauty salon, cafe, theatre lounge room, activity space, physio and wellness centre, as well as consulting rooms for easy access to GPs and allied health professionals.

"The distinguishing features of the new aged care development will include specialist aged, palliative and dementia care units all housed within separate households to ensure continuity of care between care staff and residents.

"This new building is the product of a fantastic vision from our board of directors, our planners, hard work from our builders and, very importantly, support from the local community," Mr Neaves said.

"Not only will this development be a huge boost for our premises, but also for the local economy and labour market, creating more jobs and ensuring we can continue to keep up with the demand of our

ageing community.

"This year has not only proved challenging with the threat of the coronavirus, but the increase of home care packages and people choosing to live at home means aged care providers have to look to develop residential care facilities that will stand the test of time and meet the demands of the community well into the future.

"I am most proud that together with my team, we have developed a unique offering that we are excited to reveal to our residents and the local community," Mr Neaves said.

**SOURCE:**

Media release, 23 Jul 2020  
Shane Neaves, Peninsula Villages



Pozieres House will open next month



## Patrick Brennan thanks 'wonderful neighbours'

**The Central Coast Conservatorium's artistic director Mr Patrick Brennan has spoken publicly for the first time since he almost lost his left hand in a circular saw accident at his Phegans Bay home on Saturday, May 16.**

Mr Brennan has paid tribute to his "wonderful neighbours" and the emergency responders who

arrived quickly on the scene and airlifted him to Royal North Shore Hospital from Rogers Park.

He said he believed it was largely due to the skill and care of surgeon Dr James Ledger and his team that he still has his hand.

"Since my accident, the support from colleagues and the music and broader arts community on the Coast and from around Australia has been generous and incredibly

inspiring," Mr Brennan said.

"I could never have imagined how much a community could rally around one individual in a time of a crisis.

"The amount of support and love that has come my way from our community has been truly overwhelming.

"I'm so glad to be alive and cannot wait to get back to making music and teaching students at the

Conservatorium."

Mr Brennan said that, although he was currently incapacitated and learning how to re-use his left hand, his "musicians' mind" would help him overcome the challenges that come his way during his recovery period.

Media release, 10 Jul 2020  
Patrick Brennan, Central Coast Conservatorium

birds wildlife fish dogs cats

# PAWS ON THE COAST

small animals

**PET FOOD, ACCESSORIES, DAY SPA & GIFTWARE**

**237-239 WEST ST UMINA BEACH - 4341 4237**



## DOGGY DAY SPA

**DOG GROOMING, WASHING & NAIL TRIMMING**

## MindHealth

# It's ok to ask for help...

Call 1300 029 131  
[mindhealth.org.au](http://mindhealth.org.au)

**Free professional support for those who live and work in the Hunter, New England and Central Coast regions.**

Call 1300 029 131 or visit [mindhealth.org.au](http://mindhealth.org.au) to speak to a counsellor. Help is available to anyone aged 15 or over, Monday to Saturday 7am to 9pm.

This service is funded by

**phn**  
HUNTER NEW ENGLAND  
AND CENTRAL COAST  
An Australian Government Initiative

Delivered by

**on the line**





## Students achieve 'bronze' status

**A number of students in Team Two at Brisbane Water Secondary College have been recognised for reaching "bronze status".**

They were, in 7.2.1: Dominic Barnes, Mikaylah Burchell, Bailee Hughes, Siarah Kings, River Miles, Owen-Jude Pyne and Riley Van Der Neut.

In 8.2.1, they were James Black, Amir El-Kurdi, Binnowee Ellis, Sean Johnson, Dita Morris, Saria Puata, Aaron Santos, Tasia Simon, Charlie Wilcockson, Nate Wilkes and Pearl Woods.

In 9.2.1, Joshua Groves, Adam Hawkins, Brooke Mason, Jay Naughton and Megumi Ramos were named.

"This term, our students have continued to learn both in and outside of the class room," said campus principal Ms Kerry O'Heir.

"A school day can include research, sporting activities and creative problem solving.

"We are focusing on commitment this term, especially displayed through school uniform and by being fully prepared for every lesson by bringing all school equipment.

"Year 7 has been working hard showing their creativity in English and being very competitive in PDHPE to be the best.

"They are learning agriculture on the farm this term.

"Year 8 have enjoyed being back in the classroom learning.

"The students have been engaged in Technology Mandatory to finish their timber project.

"In PDHPE, all students are learning about different cultures and inclusivity in physical activity.

"In English, Year 8 have been looking at Australian voices in poetry.

"They have been exploring the poems of Banjo Paterson and Henry Lawson and having a go at writing some poetry of their own.

"In Year 9, all students have been displaying their knowledge in PDHPE through improving individual and community health around the Peninsula and engaging in Court Sports for PE."

**Newsletter, 19 Jun 2020  
Kerry O'Heir, BWSC Umina**

## Mural installed on Umina school library wall

**A new mural has been installed at Umina Beach Public School thanks to the school's parents and citizens association and artist Mr Dave Charles.**

The association worked alongside Mr Charles during the school holidays to deliver a new wall mural to the school, said association president Ms Lucy Lamont.

"We hope this inspires and brightens the day of students, staff, parents and carers, as you all deserve a huge lift and thanks for

surviving 2020 so far."

She said Mr Charles had not taken a photograph of the local beach and transformed it into a seven metre artwork on the side of the library wall, closest to the gates at the Melbourne Ave school entrance.

"We look forward to working with Dave again over Term 3 as we deliver a similar artwork and upgrade to the face of the canteen and main entrance to the school on Sydney Ave."

**Newsletter, 21 Jul 2020  
Lucy Lamont, Umina Beach Public School**

## Level One water restrictions to remain until November

**Level One water restrictions will remain in place through the winter months even if the Mangrove Creek dam reached 55 per cent capacity.**

Council director Mr Jamie Loader told the July 13 Central Coast Council meeting said the dam's level that day was 54.5 percent.

The Level One restrictions were to be dropped in favour of Water Wise rules once the Mangrove Creek Dam reached 55 percent capacity.

The Council decided to keep the restrictions in place on the recommendation of staff, with the situation to be reassessed in November.

Mr Loader said it would be no

impost on the community during winter and the position could be revisited in November, going into summer.

He said he was recommending that trigger levels went up as needed, with any easing of those levels being a Council decision.

**SOURCE:  
Central Coast Council  
agenda 3.2, 13 Jul 2020**

## Bodies of elderly women found in Ettalong home

**The bodies of two elderly women have been found inside an Ettalong home on Sunday, July 19.**

Emergency services were called to a unit on Bream Rd, Ettalong Beach, after the body of a woman aged in her 90s was found.

Officers from Brisbane Water Police District attended and found

the body of a second woman, aged in her 70s.

Specialist forensic police examined the scene.

Police said they were not treating the deaths as suspicious.

They said that a report would be prepared for the Coroner.

**Source:  
Media Statement, 22 Jul 2020  
Samantha Long, NSW Police**

## Providing Residential Aged Care for over 30 years

BlueWave Living is a not-for-profit, community owned organisation offering permanent residential care, dementia specific care and respite accommodation.

- Registered Nurse on site 24/7
- All meals cooked fresh on the premises
- Comprehensive Activities Program
- On site services – Health & Therapy



Sponsored by  
**NEWSPAPERS**  
Central Coast

**BlueWave**  
**LIVING**

**BOOK  
A TOUR.**



**Phone 4344 2599**

6 Kathleen Street,  
Woy Woy NSW 2256

**www.bluewaveliving.org.au**





## Photographer captures lightning storm

The Peninsula was affected by heavy rain, strong winds and dangerous surf conditions caused by an "east coast low" over several

days from Sunday, July 12.

Ettalong amateur photographer Mr Sean Gavin captured the lightning storm on Monday night, July 13.

"I was visiting a friend who was staying at the Mantra," he said on his social media page.

"I just happened to have my camera so I set it up on the balcony

on a long exposure and managed to capture this."

The photo looks out over the Bouddi Peninsula, over which these streaks of lightning can be

seen.

**SOURCE:**  
Social media, 14 July 2020  
Interview (Haakon Barry), 17 July 2020  
Sean Gavin, Ettalong



Ettalong office: 02 4344 6152  
[www.ettalong.accomholidays.com](http://www.ettalong.accomholidays.com)  
Kilcare, Daley's Pt, Ettalong, Umina and  
Pearl Beach, Patonga and Woy Woy

**The Trusted name  
in Holiday Management  
and Rentals**



**AussieRV**  
& CARAVAN REPAIRS  
**1800 287 787**  
[www.aussiervs.com.au](http://www.aussiervs.com.au)

**Why wait months  
for your Caravan or  
Motorhome to be  
repaired?**

Aussie RV & Caravan Repairs is a National repairer specialising in Caravan and Motorhome repairs.

**Offering** on-site insurance assessments and a valet pick up and drop off service for all insurance work. All repairs are guaranteed and carried out by qualified technicians.

Visit us at  
**WWW.AUSSIERSVS.COM.AU**  
and view our gallery or  
call us on **Ph: 1800 287 787**  
with your insurance company  
& claim number and  
we'll handle the rest.

**YOUR FINANCIAL  
INVESTMENT REQUIRES  
PROTECTION!**



# Amalgamation money redirected, Tesch claims



Central Coast Labor MPs David Harris, left, Liesl Tesch and David Mehan at the July 13 press conference

**Member for Gosford Ms Liesl Tesch has claimed money to support Central Coast Council with the costs of amalgamation has instead been redirected to councils in Coalition-held electorates which didn't undergo amalgamation.**

Ms Tesch said extra funding could have helped with projects such as a bike path connecting Gosford and Point Clare, kerb and guttering and the education precinct in the Gosford town centre.

"We deserve more, and we don't want to see pork barrelling and delivery in other electorates," she said.

Shadow Minister for Central Coast, Mr David Harris, said it was totally unacceptable that more than \$100M of the \$250M Stronger Communities Fund Tied Grants program had been redirected.

"Central Coast Council has missed out on funding which could have fast-tracked infrastructure and better supported the amalgamation of the Gosford and Wyong councils which was forced on ratepayers in a completely undemocratic way," he said.

He was speaking at a press conference on July 13, where he

was joined by Member for Gosford Ms Liesl Tesch and Member for The Entrance Mr David Mehan.

Parliamentary Secretary for the Central Coast, Mr Adam Crouch, said the Government committed \$10M for infrastructure and \$10M for amalgamation costs to the newly-merged Central Coast Council in 2016.

"Every single dollar has been delivered to Council," he said.

"In 2018, the NSW Government committed a further \$5.5M for Central Coast Council to deliver park upgrades, surf clubs, renovations, roadworks, upgraded sporting and recreation facilities and improved youth facilities.

"All funding allocations have followed established guidelines.

"In the past two years alone, Central Coast Council has received \$104M in grant funding from the NSW Government.

"This is more than almost any other council in NSW."

Mr Harris claims some of that money came from different grant funding programs, other than the Stronger Communities Fund Tied program in question.

**SOURCE:**  
**Press Conference, 13 Jul 2020**  
**Central Coast Labor MPs**  
**Media statement, 13 Jul 2020**  
**Adam Crouch, Parliamentary**  
**Secretary for the Central Coast**

## Wicks welcomes extension of coronavirus payments

**Federal Member for Robertson Ms Lucy Wicks has welcomed the extension of the JobKeeper program and the coronavirus supplement.**

She said the JobKeeper Payment will continue at its current level until September 27 after which it will be extended for a further six months to March 28, 2021.

"JobKeeper 2.0 will help business and those without work to not only get through this crisis but also to recover on the other side," she said.

A two-tiered payment will also be introduced so as to better reflect the pre-Covid-19 income of payment recipients.

The two payments will be \$1200 and \$750 per fortnight after September 27, with the

lower payment for employees who worked less than 20 hours a week in the month of February pre-Covid-19, she said.

From January 4, the two payment will be \$1000 and \$650.

The temporary coronavirus supplement for those on income support will also be extended until the end of the year.

The \$550 per fortnight supplement will continue until September 24.

After that, the supplement will be \$250 per fortnight.

"The Morrison Government's focus remains on the safety of all Australians and I know that the extension from September will bring a sigh of relief from many in our community," Mrs Wicks said.

**SOURCE:**  
**Media release, 21 Jul 2020**  
**Lucy Wicks, Member for Robertson**

**Umina Beach Markets**

90 STALLS

9AM-2PM

**THIRD SUNDAY MONTHLY**

**FREE SHUTTLE BUS**

WOY WOY WHARF- ETTALONG WHARF -  
ETTALONG DIGGERS- BUNNINGS WEST ST

• JUL 19 • OCT 18

• AUG 16 • NOV 15

• SEP 20 • DEC 20

**Umbala Events**

**www.UmbalaEvents.com**

2ND SUNDAY MONTHLY

9AM-2PM

**HANDMADE**

ON THE COAST

WOY WOY

**NEW LOCATION AT WOY WOY FORESHORE**

• AUG 9TH • OCT 11TH

• SEP 13TH • NOV 8TH

• DEC 13TH

**BRICK WHARF RD**

**URGENT NEED FOR CARERS OF SCHOOL AGED CHILDREN**

**Help a child in your community. Become a foster carer.**

Support, training & allowance provided

For further information call:

**1300 325 627**

[www.wesleymission.org.au/wesleydalmar](http://www.wesleymission.org.au/wesleydalmar)

**Outraged and frustrated by global injustices?**

Join a community of passionate human rights change-makers in your local area.

**Connect. Take actions. Make a change.**

Email: [amnesty.centralcoast@gmail.com](mailto:amnesty.centralcoast@gmail.com)

**AMNESTY INTERNATIONAL**



## Exhibition at Ettalong

**The works of a Pearl Beach artist will be featured in an exhibition in Ettalong during August.**

The Waterline Art Gallery at the Republik Cafe will host the exhibition of nearly 30 of the works of Ms Marijke Greenway, inspired by her travels around Australia with late husband, John.

She said her aim was to capture the beauty of the land, from the oceans to the desert.

Cafe owner Mr Wolfgang Zichy said Ms Greenway, born in Holland and raised in South Africa, came to Australia in 1988.

"Eventually she focussed on oils, watercolours and acrylic painting techniques.

"Marijke has tutored for over 20 years and has shown her artwork in both group and solo

exhibitions, and has contributed to art magazines and newspapers.

"Besides in her gallery in Pearl Beach, Marijke Greenway has shown her work for over a decade at the Palm House in Sydney's Botanic Garden as well as the Royal Easter Show.

"Her latest passion is encaustic painting.

"For this, Marijke hardens beeswax with resin, and mixes in coloured oil pigments.

"The hot substance is spread on boards in layers and fused one at a time with fire.

"The result is a shiny enamel like surface with lends itself to abstraction."

**SOURCE:**

**Media Release, 21 Jul 2020  
Wolfgang Zichy, Waterline  
Art Gallery**



## Folk club to hold open-air performance at Hardys Bay

**The Troubadour Folk Club will hold a free open-air concert at Hardys Bay Club on Sunday, August 9.**

It will be club's first live performance since the coronavirus pandemic forced it to close.

Club president Mr Michael Fine said the concert from 1pm to 4pm was a great opportunity for all Troubadour regulars to get up on stage and show what they've been working on.

"The aim is to make the music and verse come alive once again, bringing people together to share the joy of great music and giving our amazing members and other proven performers and aspiring stars the opportunity to get on stage and perform," Mr Fine said.

He said social distancing and hygiene rules will be practised and, if there were any concerns or a change in circumstances, the

concert would move online.

Mr Fine said that, while the club had not been holding live performances, Troubadour performers had held regular music sessions and "virtual floorspots" with performances recorded and uploaded on to the club's website for fans to watch and enjoy from home.

The club also organised live online concerts with some of Australia's best folk musicians, with ticket sales helping to pay performers who were unable to earn an income during the lockdown.

Troubalukers, the ukulele group which regularly performs in nursing homes and on the big stage at Troubadour concerts, practised each week in Peninsula Community Garden in Woy Woy.

**SOURCE:**

**Media release, 21 Jul 2020  
Michael Fine, Troubadour Folk Club**

## Group receives funding for tables

**A local entertainment organisation has received funding from Rotary Clubs on the Central Coast, in association with the Central Coast International Women's Day Committee and Member for Gosford Ms Liesl Tesch.**

The money was received by Naughty Noodle Fun Haus for new tables for activities at the group's Ettalong Beach hall, Wadhai.

"Our arts and culture organisation focuses on inclusion and diversity of all people and we have been volunteering and having events across the Coast at different clubs, halls and spaces," said group co-founder Mr Juan locco.

"We were first advised about the grant in November.

"We purchased 20 large tables, each of which holds 10-12 people.

"These tables are not only an asset for our registered charity but it also frees up funds to be used to pay artists and tech crews," he said.

**SOURCE:**

**Media Release, 11 Jul 2020  
Liz North, Rotary Club of  
Wyong Tuggerah.  
Interview (Haakon  
Barry), 20 Jul 2020  
Juan locco, Naughty  
Noodle Fun Haus.**



**DREAM DOORS® KITCHENS**  
AMAZING KITCHEN FACELIFTS

**DOES YOUR HOME NEED AN AMAZING KITCHEN MAKEOVER?**

Facelift or replace your drawers, bench top or cabinetry



BEFORE

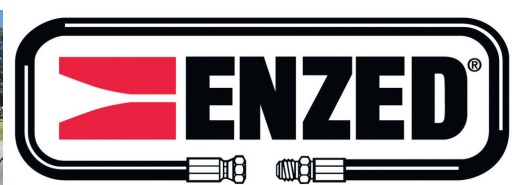


AFTER

*Best quality products at the most competitive prices*

**Call now for a FREE HOME CONSULTATION on 1800 373 263 or Nathan 0421 791 107**

**Nathan@dreamdoors.com.au - www.dreamdoors.com.au**



**TOTAL HOSE & FITTING SERVICE  
POWER STEERING HOSE MADE IN UNDER 2 HRS\***

**CALL 4355 4908**

**24HR SERVICE AVAILABLE**

**SERVICE CENTRE LOCATED AT WYONG  
SERVICING ALL AREAS OF THE CENTRAL COAST**

\* SUBJECT TO PARTS AVAILABILITY



## Art & Culture

**Central Coast Art Society**  
 Weekly paint-outs  
 Tues 0428 439 180.  
 Workshops 9.30am 1st & 3rd  
 Wed Gosford City Art Centre  
 4363 1156.  
 Social Meetings 1.30pm 4th  
 Wed for demonstrations  
 4325 1420  
[publicity@artcentralcoast.asn.au](mailto:publicity@artcentralcoast.asn.au)

**Central Coast Handweavers, Spinners and Textile Arts Guild**  
 Spinning and weaving,  
 patchwork and quilting, felting  
 and other fibre and fabric  
 crafts, community quilting  
 bees  
 Day and Night Groups  
 4325 4743  
[www.cottagecrafts.net.au](http://www.cottagecrafts.net.au)

**Ettalong Beach Art & Crafts Centre**  
 Adult classes in Pottery  
 Watercolours, Oils, Acrylics,  
 Pastels, Silvercraft,  
 Patchwork & Quilting  
 0412 155 391  
[www.ebacc.com.au](http://www.ebacc.com.au)  
[ebacc\\_email@gmail.com](mailto:ebacc_email@gmail.com)

**Hospital Art Australia Inc.**  
 Meet every Tue and Fri  
 9am-2pm - 109 Birdwood  
 Ave, Umina - Painting and  
 Canvas drawing. Volunteers  
 welcome  
 0431 363 347  
[hospitalartaustalia.com.au](http://hospitalartaustalia.com.au)

## Community Centres

**Peninsula Community Centre**  
 Cnr Ocean Beach Rd &  
 McMasters Rd Woy Woy  
 Activities, programs and  
 support groups for children,  
 teens, adults and seniors  
 including occasional care,  
 playgroups, dance classes,  
 karate, fitness classes, youth  
 services, gambling solutions,  
 internet kiosk and social  
 groups.  
 4341 9333  
[www.coastcommunityconnections.com.au](http://www.coastcommunityconnections.com.au)

**Empire Bay Probus Club**  
 Friendship, fellowship,  
 and fun in retirement.  
 Very active club, outings,  
 excursions, dining - 3  
 times a month  
 1st Thur 1.30pm  
 Empire Bay Progress Hall  
 Visitors Welcome.  
 0414 280 375

**Ettalong 50+ Leisure & Learning Centre**  
 Cards, Chess, Choir, Creative  
 Folk Art, Dancing, Darts,  
 Handicraft, Handicrafts,  
 Indoor Bowls, Leatherwork,  
 Line Dancing, Mahjong,  
 Painting, Rummking,  
 Scrabble, Table Tennis,  
 Ukulele, Women's Shed,  
 4304 7222

**Brisbane Water Caravan Club**  
 Caravans Wanted to  
 join and have fun  
 Gosford NSW  
 Your owners are most  
 welcome too  
<https://bwcaravanclub.wixsite.com/bwcc>  
 Contact Joe  
 4344 4363

## Central Coast Community Legal Centre

Not for profit service providing  
 free legal advice.  
 Monday to Friday  
 9am to 5pm  
 4353 4988  
[contact@centralcoastclc.org.au](mailto:contact@centralcoastclc.org.au)

## Point Clare Community Hall

Community Garden -  
 Playgroup  
 Craft and Exercise Groups  
 Function or Meeting Hire  
 Managed by Gosford  
 Regional Community  
 Services  
 Enquiries regarding hire to  
 4323 7483  
[accounts@gosfordcommunity.org.au](mailto:accounts@gosfordcommunity.org.au)  
[www.gosfordcommunity.org.au](http://www.gosfordcommunity.org.au)

## Community Groups

**ABC "The Friends"**  
 Support group for Public  
 Broadcaster.  
 Aims: Safeguard ABC's  
 independence, adequate  
 funding, high standards.  
 Meetings through the year +  
 social mornings  
 Well-known guest speakers  
 0400 213 514  
[www.fabcnsw.org.au](http://www.fabcnsw.org.au)

## Central Coast Caravanners Inc

3rd Sun - Jan to Nov  
 Visitors - New Members  
 welcome, Trips Away, Social  
 Outings, friendship with like  
 minded folk -  
 Details from Geoff  
 0447 882 150

## CENTRAL COAST 50+ SINGLE & SOCIAL GROUP

Fun And Friendship With an  
 Excellent Monthly Program of  
 Dinner, Dancing, Scrabble,  
 Cards, And Tenpin Etc.  
 So Call -  
 0437 699 366  
 0407 003 214

## CCLC Indoor Bowls

Mon - Ladies Social  
 Wed Night - Mixed Social  
 Sat - Mixed Social  
 New members welcome -  
 tuition given  
 level 2 Central Coast  
 Leagues Club  
 4334 3800

## Peninsula Village Playgroup

Carers, Grandparents,  
 parents & children  
 'Intergenerational Playgroup'  
 Tues 10-11.30am  
 4344 9199

## Peninsula School for Seniors

Community Centre,  
 McMasters Road, Woy Woy  
 Discussions, rumikin, craft,  
 history, walks, & coach trips  
 Tues, Wed, Thur  
 4341 5984 or 4341 0800

## The Krait Club

Community Centre - Cooinda  
 Village, Neptune St, Umina  
 10.30am For seniors. Gentle  
 exercises, quizzes, games,  
 social activities, guest  
 speakers, entertainment and  
 bus trips - 4344 3277

## Umina Beach Men's Shed

Men share a variety of tools,  
 pursue interests and hobbies,  
 spend time with other men  
 and learn new skills  
 Darrell 4342 9606

## Volunteering Central Coast

Refers potential volunteers  
 to community orgs. Supports  
 both volunteers and  
 community orgs. Training for  
 volunteers & their managers.  
 4329 7122  
[recruit@volcc.org.au](mailto:recruit@volcc.org.au)

## Wagstaffe to Killcare Community

Protect and preserve the  
 environment & residential  
 nature of the Bouddi  
 Peninsula and to strengthen  
 community bonds  
 2nd Mon, 7.30pm  
 Wagstaffe Hall 4360 2945  
[info@wagstaffetokillcare.org.au](mailto:info@wagstaffetokillcare.org.au)

## Wine appreciation club

Central Coast Leagues Club  
 2nd Wed  
 Taste and be educated on  
 wine by various wineries.  
 Purchases not mandatory  
 Keith - 0420 722 529  
 Fraser - 0416 831 088

## Entertainment

### Frantastics Choir Inc

High quality variety  
 entertainment available for  
 matinee  
 bookings at your venue.  
 New members welcome.  
 1pm Mondays during school  
 terms  
 Walter Baker Hall, Woy Woy  
 4343 1995  
[www.frantastics.org](http://www.frantastics.org)

## LEARN TO DANCE

Social ballroom dancing for all  
 ages, all you need is a desire  
 to learn and dance,  
 no partner required.  
 meet every Tues - St Luke's  
 Anglican Church, 7pm  
 & 15 Lorraine Ave  
 Berkeley Vale, 2:30pm  
 Anne - 0409 938 345  
[anneglazier@y7mail.com](mailto:anneglazier@y7mail.com)

## Health Groups

### Al-Anon

If someone's drinking is  
 causing you problems...  
 Al-Anon can help  
 1300 252 666  
 Meetings Sat 2pm  
 Woy Woy Hospital  
 Ocean Beach Road

## Arthritis NSW

Woy Woy support group  
 Ettalong Bowling Club  
 Springwood Road Woy Woy  
 3rd Tues 10.30am  
 1800 011 041

## Better Hearing Australia - Central Coast

Hea ring loss management  
 Support and educational  
 groups providing practical  
 experience and confidence  
 Learn the benefits of hearing  
 aids - 4321 0275

## BlueWave Living

Woy Woy Community  
 Aged Care facility providing  
 residential aged care to the  
 frail aged.  
 Permanent and respite care  
 accommodation available.

Information 2nd and 4th Wed  
 - 10am - 4344 2599  
[reception@bluewaveliving.org.au](mailto:reception@bluewaveliving.org.au)

## Central Coast Parkinson's Support Group

We aim to help individuals  
 and their families better  
 manage living with  
 Parkinson's Disease  
 Guest speakers are a regular  
 feature of our meetings.  
 2nd Tue - 1.30pm  
 1800 644 189

## GROW Support Groups

Small friendly groups formed  
 to learn how to overcome  
 anxiety, depression and  
 loneliness and to improve  
 mental health and well-being.  
 Anonymous, free and open  
 to all. Bring a support person  
 if you like. Weekly meetings  
 at Woy Woy, Bateau Bay and  
 Wyong  
 1800 558 268  
[www.grow.org.au](http://www.grow.org.au)

## Meals on Wheels

Delicious meals delivered  
 free - Join us for a midday  
 meal - Help with shopping  
 and cooking classes  
 4341 6699

## Mary Mac's Place

Providing hot, freshly cooked  
 meals - Mon to Fri 11am-1pm  
 with support, info & referrals  
 4341 0584  
[marymacs@woywoycatholic.org.au](mailto:marymacs@woywoycatholic.org.au)

## Overeaters

**Anonymous (OA)**  
 12-step fellowship for those  
 with eating disorders. No  
 dues, fees, or weigh-ins.  
 Peninsula Com. Cntr, cnr. Mc  
 Masters Rd & Ocean Beach  
 Rd. Woy Woy, Fri 8pm  
 0412 756 446  
[www.oa.org](http://www.oa.org)

## Peninsula Village Wellness Centre

Offering holistic and  
 complementary therapies  
 including aromatherapy,  
 massage and music therapy  
 4344 9199

## Peninsula Village Meals

Delivered daily to your door  
 Nutritious, great for the elderly  
 4344 9199

## Peninsula Village Carer's Support Group

For carers of loved ones with  
 dementia - 1st Wed - 10 to  
 11.30am  
 Paula 4344 9199

## Prostate Cancer Support Group (Gosford)

Last Fri, Terrigal Uniting  
 Church, 380 Terrigal Drive,  
 Terrigal  
 9.30am to 12 noon  
 4367 9600  
[www.pcfa.org.au](http://www.pcfa.org.au)

## Peninsula Lighthouse

Guiding you through the  
 storm - Your only local mobile  
 counselling service  
 Supporting ALL people  
 suffering from Domestic  
 Violence offering a holistic  
 program making our  
 community safer.

Counselling services available  
 Monday @ Ettalong Baptist  
 Church Barrenjoey Room ,

book an appointment:  
 0417 472 374  
[penlighthouse@gmail.com](mailto:penlighthouse@gmail.com)  
[www.peninsulalighthouse.info/](http://www.peninsulalighthouse.info/)

## Schizophrenia and Bipolar Fellowship

For Schizophrenia/Bipolar/  
 Mental Health sufferers,  
 family, carers and friends. .  
 1st Thur - 1pm Room 3  
 Uniting Church Donnison St  
 Gosford  
 4344 7989 or 4368 2214

## Woy Woy Stroke Recovery Club

Everglades Country Club  
 2nd Tues 11am  
 Company, up-to-date info,  
 hydrotherapy, bus trips  
 1300 650 594

## Music

**Brisbane Water Brass**  
 Brass Band entertainment  
 for the community playing all  
 types of popular music.  
 Rehearsal every Wed  
 8pm -10pm  
 0419 274 012

## Coastal a Cappella

Award winning women's a  
 cappella chorus.  
 Music education provided.  
 Rehearsals Tuesday 7pm @  
 Red Tree Theatre Tuggerah.  
 Performance opportunities.  
 Hire us for your next event.  
 0412 948 450  
[coastalacappella@gmail.com](mailto:coastalacappella@gmail.com)

## Soundwaves

A cappella harmony for Men  
 - new members welcome.  
 Rehearsals Mondays 7.00pm  
 to 9.30pm Central Coast  
 Leagues Club, Dane Drive,  
 Gosford  
 Ring Max on 4324 3631  
 or Kieran 4324 1977

## Troubadour Central Coast Folk, Traditional & Acoustic

Music and Spoken Word  
 Concerts, Ukulele meets, and  
 Sessions  
 4th Sat 7pm CWA Hall Woy  
 Woy 4342 6716  
[mail.info@troubadour.org.au](mailto:mail.info@troubadour.org.au)

## Political Groups

**Australian Labor Party**  
 Political discussions, national,  
 state and local government  
 issues

## Umina Ettalong Branch

2nd Mon Umina Beach  
 Bowling Club 7.30pm 4342  
 3676

## Ourimbah/ Narara Branch

Function Room, Grange  
 Hotel, Wyoming  
 7.30pm 1st Mon  
 0410 309 494  
[kyle.macgregor@hotmail.com](mailto:kyle.macgregor@hotmail.com)

## Woy Woy Branch

Everglades Country Club  
 7.30pm 2nd Mon

## Peninsula Day Branch

1pm 2nd Mon  
 CWA Hall Woy Woy  
 4341 9946

## Liberal Party of Australia

**Woy Woy Branch**  
 4th Thur 6.30pm  
 Club Umina, Melbourne Ave,  
 Umina Beach  
[woywoyliberals@gmail.com](mailto:woywoyliberals@gmail.com)

## Central Coast Greens

Active regarding ecological  
 sustainability, social &  
 economic justice, peace &  
 non-violence, grassroots  
 democracy & getting  
 Greens elected  
 3rd Thur  
[centralcoast.nsw.greens.org.au](mailto:centralcoast.nsw.greens.org.au)  
[centralcoastgreens@gmail.com](mailto:centralcoastgreens@gmail.com)

## Service Groups

### Lions Club of Woy Woy

Everglades Country Club  
 3rd Monday of each month  
 Make new friends and  
 have fun while serving your  
 community.  
 0478 959 895

## Rotary Clubs

International service club  
 improves lives of communities  
 in Aust. & o/seas. Fun-filled  
 activities, fellowship and  
 friendship.

### Rotary Club of Kariong

Phillip House, 21 Old Mount  
 Penang Rd, Fri 7.15am  
 4340 4529

### Rotary Club of Umina Beach

Wednesdays 6.30pm  
 Everglades Country Club  
 0409 245 861  
[curleys@ozemail.com.au](mailto:curleys@ozemail.com.au)  
 0409 245 861

### Rotary Club of Woy Woy

Tues 6pm Everglades  
 Country Club.  
 Don Tee 0428 438 535

## Special Interest

### Bridge

Duplicate Bridge Mon Tue  
 Thur Fri Sat-12.15pm  
 & Wed 9.15am  
 Brisbane Water Bridge Club,  
 Peninsula Community Centre  
 93 McMasters Rd.  
 Woy Woy  
[www.brisbane-water.bridge-club.org](http://www.brisbane-water.bridge-club.org)

## Cash Housie

50 Games every Sat night  
 Peninsula Community Centre,  
 McMasters Rd, Woy Woy,t  
 7.30pm. Proceeds to Woy  
 Woy Catholic Parish.  
[wwcashousie@hotmail.com](mailto:wwcashousie@hotmail.com)

## Central Coast Family History Society Inc.

Tue to Fri 9.30am - 2.00pm  
 First Sat 9.30 - noon  
 Thur 7pm - 9pm  
 Other times by appointment.  
 4324 5164  
[www.centralcoastfhs.org.au](http://www.centralcoastfhs.org.au)  
[admin@centralcoastfhs.org.au](mailto:admin@centralcoastfhs.org.au)

## Central Coast Tenants' Advice and Advocacy Service

Help with issues with  
 landlords & real estate  
 agents? Free telephone  
 advice and advocacy for  
 all tenants and residents in  
 residential parks.  
 4353 5515  
[cctaas@hotmail.com](mailto:cctaas@hotmail.com)

## Central Coast Rescue Unit

Marine Education Courses.  
 Radio Licenses, Boat  
 Safety & Boat License  
 & PWC License Tests,  
 Navigation, Seamanship and  
 Meteorology.  
 4325 7929  
[www.vmrcc.org.au](http://www.vmrcc.org.au)

## Central Coast Soaring Club Inc

Gliding Club, Learn to fly,  
 instruction FREE to members  
 Come and have an Air  
 Experience Flight  
 All Welcome  
 14 and up for Training  
 Flying at Bloodtree Road  
 Mangrove Mountain Thur,  
 Sat, Sun (weather permitting)  
 0412 164 082  
 0414 635 047  
[www.ccssoaring.com.au](http://www.ccssoaring.com.au)

## Ettalong Toastmasters

We provide a supportive and  
 positive learning experience in  
 which members are  
 empowered to develop  
 communication and  
 leadership skills, resulting in  
 greater self-confidence and  
 personal growth  
 2nd & 4th Tue, 7:30PM,  
 Ettalong Diggers  
 0408 416 356

## Peninsula Environment Group

Environmental projects,  
 (incl. Woytopia),  
 Woy Woy community garden,  
 social events, workshops,  
 organic food buying group  
[www.peg.org.au](http://www.peg.org.au)

## Veterans

### National Malaya Borneo Veterans Association

1st Sat (except Jan) 10.30am  
 Umina Club  
 Melbourne Avenue  
 Umina Beach  
 4342 1107

### Veterans' Help Centre'

Assist all veterans &  
 families with pension &  
 welfare issues.  
 Mon & Wed 9am-1pm  
 4344 4760 Cnr Broken Bay  
 Rd & Beach St Ettalong.  
[centralcoastveterans@bigpond.com](http://centralcoastveterans@bigpond.com)

## Woy Woy Ettalong Hardy's Bay RSL

Provide help with pensions  
 and welfare etc.  
 Shop 5/382 Oceanview Rd  
 Ettalong. Tues & Thurs 9am  
 to 1pm 4341 2594

## Women's Groups

### CWA-Umina Beach

Cnr Ocean Beach Rd and  
 Sydney Rd  
 Craft & Friendship: 1st, 3rd,  
 4th Wednesday at 9.30  
 Branch Meeting: 2nd  
 Wednesday at 10am  
 Phone: 0410324282  
[cwaofnswumina@bigpond.com](mailto:cwaofnswumina@bigpond.com)

## Country Women's Association Woy Woy

30 The Boulevard, Woy Woy  
 Craft & Friendship: 1st, 2nd  
 and 3rd Wed 10AM.  
 Meetings: 4th Wed 10AM.  
 Ph: 0411 434 785  
[woywoywa@gmail.com](mailto:woywoywa@gmail.com)

## Peninsula Women's Health Centre

Counselling, therapeutic and  
 social groups, workshops,  
 domestic violence and abuse  
 issues. All services by women  
 for women  
 4342 5905  
[www.cocwhc.com.au](http://www.cocwhc.com.au)



# Central Coast NEWSPAPERS

If you would like your Community Organisation listed here call us on 4325 7369  
 or see [www.coastcommunitynews.com.au](http://www.coastcommunitynews.com.au)

Entries in the Not For Profit Community Organisations Directory are free. However, we require each organisation to  
 subscribe to each newspaper to ensure that someone from that organisation keeps their entry up to date. Subscription rates \$75 for 25 editions.



# Wagstaffe artist has work on display in Gosford

**Wagstaffe resident Mr Ian Provest is one of 11 Central Coast artists whose work is now on display in Gosford.**

The "In Iso" exhibition has begun at the Gosford Regional Gallery and features Mr Provest's new work, entitled CWALM.

"The idea for my new work surfaced during Covid-19 isolation with its periods of concern, uncertainty, fear, grief, news overdoses, on-line supportive connections and photo instagram posts," he said.

"I became aware of an unhealthy escalating adrenaline in the community and myself.

"This sapped up valuable time, so I diverted this energy into art.

"I had found lost or discarded playing balls on walks along Killcare and Putty Beach, over the past 20 years and placed them in

large suitcase of my late mother, Merle.

"I decided to use them around Easter, as I have some history of creating works during Easter.

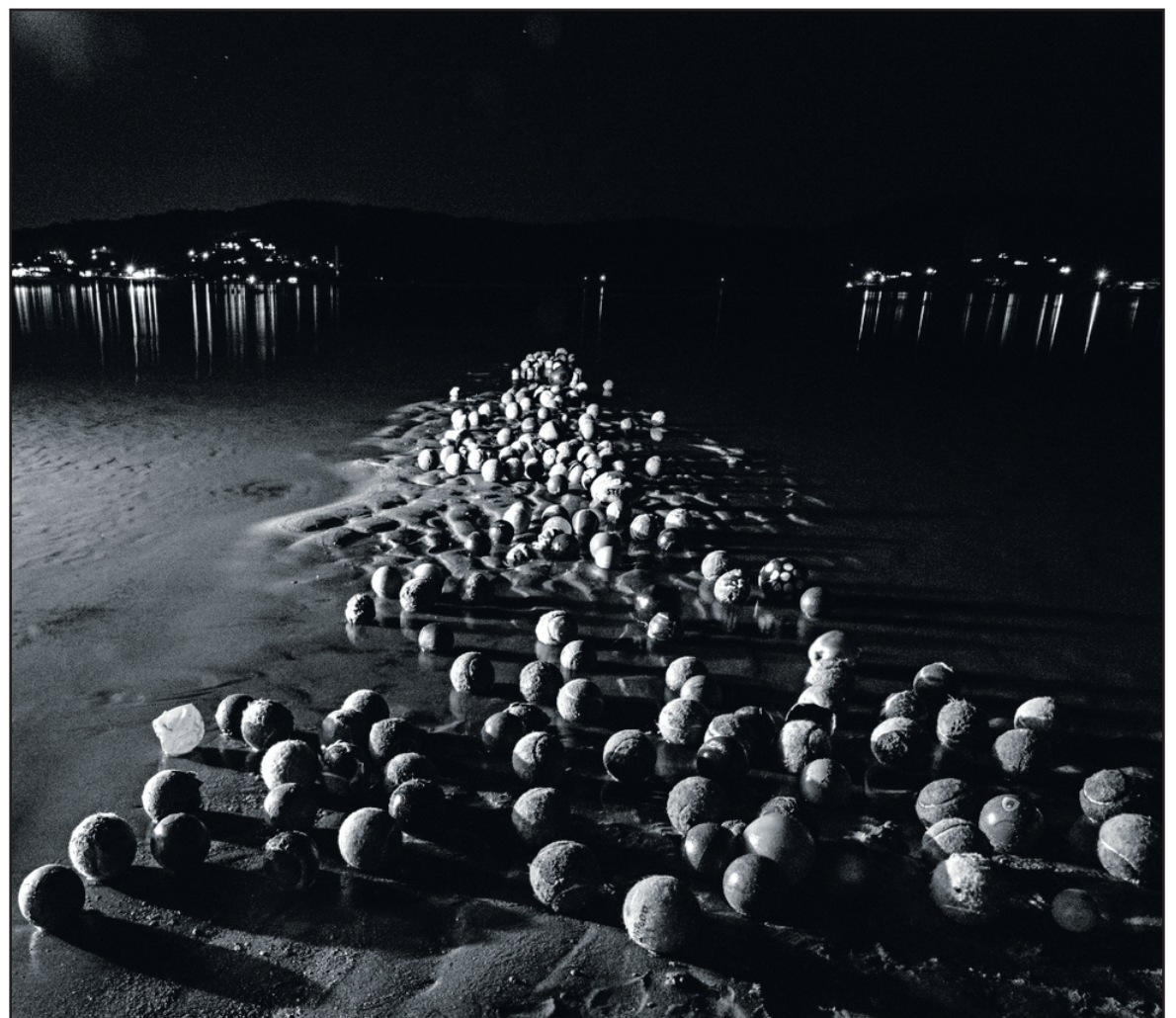
"Alone I kayaked to a sandbank located in the waterway between Ettalong and Hardys Bay... on Easter Saturday night.

"I still sense my childhood wonder of these sandbanks, magic islands where the sense of time is different.

"An unexpected gale force wind thwarted my plans, so I returned on Easter Sunday and the outcome is on display."

The exhibition is now open with contact tracing and timed entry tickets, although there is no time limit out on patrons throughout their visit.

**SOURCE:**  
Media release, 23 Jul 2020  
Ian Provest, Wagstaffe



## Peninsula News WHERE DO YOU GET IT?

**FOLLOWING IS A COMPREHENSIVE LIST OF PENINSULA COMMUNITY ACCESS NEWS PICKUP LOCATIONS. PAPERS ARE DELIVERED TO ALL OF THESE LOCATIONS ON PUBLICATION DAY.**

### BOOKER BAY

Booker Bay General Store  
72 Booker Bay Rd  
Daley's Point  
The Cove Retirement Village  
36 Empire Bay Dr

### EMPIRE BAY

Bayside Gardens Lifestyle Village  
437 Wards Hill Rd  
Empire Bay Tavern  
1 Poole Cl  
Impact Plants Café  
9 Poole Cl  
United  
306 Empire Bay Dr

### ERINA FAIR

Service desk  
Terrigal Dr  
Woolworths  
620-658 Terrigal Dr

### ETTALONG

Ingenia Lifestyle  
1 Fassifern St  
Ettalong Beach Tourist Resort  
189 Ocean View Rd  
Cinema Paradiso  
189 Ocean View Rd  
IGA  
396 Ocean View Rd  
Ettalong Beach  
Newsagency  
257 Ocean View Rd  
Mantra Ettalong Beach

53/54 The Esplanade  
Ettalong Diggers  
51-52 The Esplanade  
Atlantis Apartments  
The Esplanade  
The Box on the Water  
Ettalong Beach Waterfront Reserve  
Ettalong Beach Motel  
46 The Esplanade  
50+ Leisure and Learning Centre  
Broken Bay Rd & Karingi St  
Ettalong Public School  
23 Karingi St

### GOSFORD

Imperial Centre  
171 Mann St  
Masonic Centre  
86 Mann St  
Central Coast Leagues Club  
1 Dane Dr  
Gosford RSL Club  
26 Central Coast Hwy

### HARDY'S BAY

Hardy's Bay Club  
14 Heath Rd

### KINCUMBER

Kincumber Nautical Village  
57 Empire Bay Dr

### PEARL BEACH

Pearl Beach Cafe and General Store  
1 Pearl Parade

### PHEGANS BAY

Box outside RFS  
Wattle Crescent

### POINT CLARE

ALDI  
53-59 Brisbane Water Dr

### PRETTY BEACH

Pretty Beach Public School  
Pretty Beach Rd

### UMINA

Ettalong Bowling club  
103 Springwood St  
Cooinda Village  
12/2-18 Neptune St  
Broken Bay Parish Uniting Church  
346 Ocean Beach Rd  
The Bourke Road Store  
174 Bourke Rd  
McDonald's  
430/438 Ocean Beach Rd  
Caltex Woolworths  
337 West St  
Coles Express  
1-3 Sydney Ave  
Woolworths  
261-275 Trafalgar Street  
Corner, West St  
ALDI  
310 Trafalgar Ave  
Coles  
4 Oscar St  
NRMA Ocean Beach Holiday Resort  
Sydney Ave  
Jasmine Greens Park

Kiosk  
Peninsula Recreation Precinct, Sydney Ave  
Umina Surf Life Saving Club  
509 Ocean Beach Rd  
Umina Beach Café  
509 Ocean Beach Rd  
Ocean Beach Surf Life Saving Club  
176 The Esplanade  
Club Umina  
Melbourne Ave  
Peninsula Village  
91 Pozieres Ave  
Umina Library  
Cnr West Street and Bullion Street  
Peninsula Office Supplies  
296 West St  
Umina Beach Newsagency  
310 West St  
Chemsave Chemist  
299 West St  
Blooms The Chemist  
Shop 6/286 West St  
Umina Surgery  
297 West St  
Yousave Chemist  
315 West St  
Umina Beach Public School  
Sydney Ave  
Lois Jones Real Estate  
226 West St

### WAGSTAFFE

Wagstaff Newsagency & General Store

46 Wagstaffe Ave

### WOY WOY

Link and Pin  
18A Railway St  
Kuoch Chemist  
43/45 Blackwall Rd  
Ms Liesl Tesch MP  
20 Blackwall Rd  
Peninsula Plaza  
Woy Woy  
Michel's Patisserie  
Peninsula Plaza  
Woy Woy Library  
Cnr Blackwall Rd &, Oval Ave  
The Bayview Hotel  
2-16 The Boulevard  
Woy Woy Hotel  
33 The Boulevard  
Gnostic Mana Café  
31 The Boulevard  
Woy Woy Organics  
8/23-27 Chambers Pl  
Fishermen's Wharf  
The Boulevard  
St Vincent De Paul Society  
43 The Boulevard  
Woy Woy Bowling Club  
186 Brick Wharf Rd  
Woy Woy Rugby League Club  
82 Blackwall Rd  
McDonald's  
7/13 Charlton St  
Deepwater Plaza  
Railway St  
Living Choice Deepwater Court Retirement Village

25 Park Rd  
Home Timber & Hardware  
182 Blackwall Rd  
Caltex  
66 Memorial Ave  
Woy Woy Public Hospital  
7 Kathleen St  
Boronia Court Hostel  
Kathleen St  
BlueWave Living-  
5/6 Kathleen St  
Peninsula Community Centre  
93 McMasters Rd  
Meals On Wheels  
Ocean Beach Rd  
Coles Express  
50-52 Ocean Beach Road &, Rawson St  
Brisbane Waters Private Hospital  
21 Vidler Ave  
KFC  
91 Blackwall Rd  
Woy Woy Public School  
Blackwall & Park Rds  
Peninsula Leisure Centre  
243 Blackwall Rd  
Woy Woy South Public School  
The School Mall  
Kitchener Park  
Maitland Bay Dr  
HammondCare  
286 Railway St  
Everglades Country Club  
Dunban Rd

**IF YOU WOULD LIKE YOUR LOCATION ADDED TO THIS LIST FOR MEMBERS OF THE PUBLIC TO ACCESS, PLEASE LET US KNOW**



Classifieds

AIR CONDITIONING

**ABSOLUTE COMFORT AIR**  
Split System Specialist  
Senior Discounts  
Sales Service & Installation,  
All Air Conditioning brands  
Fully Insured & 20+ Years Experience  
Acrtick Certified  
QUALITY WORK GUARANTEED  
Lic252855c AU41541  
DAVE 0416 770 318

ANTENNAS

A Better Picture  
Antenna & Digital Installations & Tuning  
New home specialist  
Credit cards OK  
**HAYWARD VIDEO**  
All areas  
Gosford 4323 6367  
Woy Woy 4344 4414  
Warnervale 1800 244 456  
0412 685 555

ASBESTOS REMOVAL

**Asbestos Removal**  
Fully licensed and insured asbestos removals from houses, garages, sheds, bathrooms etc.  
Ph: Tom 0422 653 794 or 4393 9890  
Safe Work NSW Lic. AD212564

AUDITING

Need your Management System Audited?  
Quality. Safety. Environment, Project Management Systems  
20 Years of Certified Auditing  
Experience - Audit Reports  
Available within One week of Audit - Assistance to rectify issues if required.  
Ph: 0439 098 060

BOREWATER

**Bores and Spears**  
Install high quality pumps and maintenance free spears, existing systems reconditioned, all work guaranteed.  
Warren Greenway  
Ph: 4341 7736  
Mob: 0408 225 390  
lic No. DL1960

BRICK LAYING

**Brick Laying & Concreting**  
All Aspects of both Trades  
40 yrs Exp  
fully insured  
Phone Greg  
0456 895 943  
Lic 124312c

CARPENTERS

**MGL CARPENTRY**  
Carpenter & Joiner  
40yrs Experience  
Decks, Pergolas, Doors, Windows etc  
Fully Insured - Call Gary  
0458 130 829  
4341 1346  
NO LABOUR & MATERIALS OVER \$5000

CARPENTRY - Building

over 30 years experience  
Local know how - working with pride and honesty  
Paul Skinner  
Lic 62898c  
0432 216 020 or 4339 2317

COUNSELLING

**ACT NOW COUNSELLING**  
SOLVE A PROBLEM. FEEL GOOD ABOUT YOURSELF AND YOUR LIFE.  
Qualified, registered, private counsellor  
By phone, online video, or in-person  
Reasonable prices  
HUGH WORRALL - MOB 0402 529 474  
act.now.counselling@gmail.com  
www.actnowcounselling.blogspot.com  
(ACA REGISTRATION #10757)

GUTTERING

**ABC SEAMLESS GUTTERING**  
GUTTER GUARD  
METAL ROOFING  
WATER TANKS  
ROOF RESTORATION  
ALL TYPES OF GUTTERING INSTALLED  
9748 3022  
www.abcseamless.com.au  
A B C SEAMLESS  
EST. 40 YEARS

HANDYMAN

**OLD MAN EMU HANDYMAN SERVICES**  
Covering all your internal and external handyman jobs  
**FREE QUOTES**  
Pensioner discount  
Call David: 0413 396 167

HANDYMAN CARPENTER

40yrs experience  
all work considered  
small jobs welcome  
**FREE quotes and pensioner discounts**  
Use a tradesman who knows what he's doing  
Phone Ian  
0414 698 097  
4341 3113

REMOVALS

**Allways Moving Removals**  
House, office units  
No job too big or too small  
Affordable rates  
Call for free quote  
0497 800 074  
0421 084 650

ROOFING

**ALL COMPETITIVE METAL ROOFING**  
Replace and repair roofs, gutters, downpipes, skylights  
All work guaranteed  
Licence la243  
**Phone: John 0410 917 435**  
Free quotes

RUBBISH REMOVAL

All types of rubbish, including asbestos, removed.  
Fully licensed and insured.  
Also will demolish sheds, garages, small buildings, bathrooms etc.  
**Blake's Demolition & Rubbish Removal**  
Ph: 0431 866 292  
Lic: AD205997

**CLASSIFIEDS ADVERTISING RATES**  
Classified advertising is the cheapest form of newspaper advertising. This newspaper is also published on line on the publication date, and is also read that way by hundreds of people. All advertisements, including these classified advertising pages, appear in full on-line as an additional benefit for free.  
See www.coastcommunitynews.com.au  
Central Coast Newspapers' classified advertising rates are relatively much lower than in other newspapers and at the same time much larger than in other newspapers, with the minimum size being 50mm X 42mm. Approximately 15,000 copies of this newspaper are printed and distributed every week.

**Personal and Not For Profit Organisations**  
As Central Coast Newspapers are community newspapers, the cost of advertising not for profit organisations' events is subsidised. This makes them the same rate as non business advertisements.  
A mono 5cm advertisement only costs \$33. Each additional cm costs \$6.60 as does colour, and/or a photograph or a logo. Private advertisements need to be paid for at the time of booking.

**Business and In Memorium rates**  
The minimum size of 5cm X a single column only costs \$50 + GST in mono and an extra \$10 + GST for colour, a logo or a photograph.  
Classified advertisements in all 3 papers are only \$40+GST each.  
Most businesses choose to advertise on an ongoing basis and discounts apply for multiple bookings, if they are paid for in full, in advance.  
Having a prepaid classified advertisement run for 6 editions only costs \$250 + GST and \$50 + GST more for colour. For 12 editions, it is \$495 + GST and \$100+ GST more for colour. For 24 editions, it is only \$950 + GST and \$200 + GST for colour, a saving of \$290 + GST.  
Artwork is free and advertisers are encouraged to change their advertisements frequently

**ELECTRICIANS**  
**YOUR LOCAL ELECTRICIAN**  
Same day service  
**Guaranteed**  
Lighting, Power Points, Phone & Data, Fault Finding,  
**No job too small.**  
Seniors Discount.  
Lic number 265652C  
**4308 6771**

**BKW**  
Electrical Services  
Lic No:248126C  
Lights - Fans - Power - Reno's - Switchboards - Security lights -  
No job too small  
Call Ben on  
**0404 093 299**

**Electrical & Data TIM BULLOCK**  
ALL ELECTRICAL AND DATA  
RESIDENTIAL AND COMMERCIAL  
**0427707080**  
Lic: 236223C

**FIX IT For you**  
Servicing the Peninsula  
All Handyman Services  
Mowing & Gardens  
Umina Based  
Free Quotes  
Call Wayne  
**0416 220 638**

**HAIRDRESSER**  
**Sammybaillie** homestudio  
Specialising in Balayage and Hair Extensions  
Balayage starting from \$150\*  
find us on instagram  
sammybaillie1301@hotmail.com  
\*terms and conditions apply

**LOCKSMITH**  
**Matt Bell's Locksmith Service**  
All lock repairs  
Lock installations  
24 hour lockout service  
Pensioner discount  
ML 000103741  
Ph: 0404 879 863

**PLASTERING**  
**PHIL BOURKE PLASTERING**  
Over 36 yrs exp  
Gyprock, Renovations  
Small Jobs, Free Quotes  
Reliable Service  
**0418 452 474**  
Licence No 2107c

**PLUMBING**  
**UMINA BEACH PLUMBING**  
All aspects of Plumbing, Drainage & Gasfitting  
**Domestic & Maintenance Works**  
Hot Water Installation & Repairs  
**4344 3611**  
**0412 132 729**  
Lic no 25650C

**TILING**  
**Homes2NV**  
Tiling Wall & Floor Property Maintenance  
**0439 589 426**  
homes2nv@gmail.com

**TUTORING**  
**NELSON LEONG DRAWING, PAINTING & TEACHING**  
Ex N.A.S. & S.C.D. to show you the skills learned over many years of joy.  
Commission to do, or whether you want to do it yourself.  
**0405 449 028**  
nelson55leong@gmail.com

**REMOVALS**  
**KEVIN'S REMOVALS & DELIVERIES**  
Deliveries & Removals, Local Sydney, Newcastle & Country. Single items or a house full. Competitive rates.  
**02 4342 1479**  
**0411 049 559**

**IT'S A NO BRAINER!**  
An advertisement from this size in 20,000 newspapers from only \$25 + GST per week  
Call now before the price goes up  
Ph: 4325 7369







Sport



Local teams avoid losses in Premier League

Both Umina United and Woy Woy soccer teams avoided losses in home games in Round Three of Central Coast Football's Premier League competition.

Umina United won 1-0 against Entrance Bateau Bay, while Woy Woy drew 0-0 against Avoca.

"Umina showed that they mean business over the weekend, beating the fierce side in The Entrance just after their glorious win over Woongarra in round two," said Central Coast Football digital content co-ordinator Ms Jess Zavolokin.

"The Entrance had ample opportunity to score in the first half, only to meet the resistance of Umina's goalkeeper on several occasions and narrowly miss target throughout the first half.

"Umina were able to execute a lead from a corner that saw them score from 18-yards and tip the game in their favour.

"The second half was characterised by a series of shortcomings after adequate scoring opportunities from both squads.

"The Entrance made numerous

attempts to equalise but were not rewarded in the end.

"Umina played with an obvious edge through to latter stages of the game, helping them to eagerly defend their clean sheet and secure a deserved result. "

Ms Zavolokin said the Woy Woy match against Avoca did not disappoint with both teams clearly enthusiastic for the win.

"Woy Woy have once again shown that they are worthy competition in the Premier League with their staunch defence disallowing Avoca FC to push a goal past them as proof," she said.

"Woy Woy were hit with a red card in the first half of the match, meaning they would have to play the rest of the game with 10 men and their ability to maintain a level result would be no easy feat.

"The second half entertained a series of impressive saves, quick passages and near-goals.

"Both teams created multiple chances, however, the execution from each side required greater precision to be on target."

SOURCE:

Media Release, 19 July 2020  
Jess Zavolokin, Central Coast Football

Lions teams defeated in first round

Five Woy Woy Lions teams were defeated when the first round of the Central Coast Rugby Union 2020 season went ahead on Saturday, July 18.

In its Premier 1 game, the Terrigal Trojans had a 70-nil win over the Lions at Woy Woy Oval.

However, Central Coast Rugby Union president Mr Larry Thomson said: "Woy Woy were far from disgraced.

"They know they played last

year's Premiers first up and they will get stronger as the year progresses," he said.

Terrigal crossed the try line 10 times throughout the match, with fly-half, Adam Danckert converting all 10 tries.

Despite even play in the first quarter, Terrigal soon dominated the match and the teams went to half time 35-nil, he said.

Mr Thomson said Woy Woy did not stop trying for the entire 80 minutes.

"Woy Woy were best served by back Wade Hannell who gave everything all day."

In Premiere 2, Terrigal beat Woy Woy 54-12.

In the Presidents Cup, Terrigal again beat Woy Woy, 50-12.

In the Women's game, Terrigal also defeated Woy Woy, 59-12.

In the Colts, Hornsby Rugby Club won against Woy Woy by 27-7.

SOURCE:

Media Releases, 13 and 18 Jul 2020  
Larry Thomson, CCRU

Ken Young is Everglades major singles bowls champ

Ken Young has defeated John Donahue in the major singles championship at Everglades Bowling Club on Saturday, July 18.

The game went ahead after a four-month delay due to the social restrictions put in place in response to the coronavirus pandemic.

Club publicity officer Mr John Orme said the game went Ken's way early on after he was able to

get ahead with a 13-nil lead.

John fought back in the middle stages of the game and contested Ken's lead, he said.

However, he was unable to turn the tide of the match and, in the end, Ken won 31-14, Mr Orme said.

SOURCE:

Media Release, 18 Jul 2020  
John Orme, Everglades Country Club

Women's soccer teams successful

Both Southern and Ettalong United and Umina United soccer teams were successful in Round Three of the Central Coast Women's Football League on Sunday, July 19.

Southern and Ettalong defeated the East Gosford Rams at East Gosford, 4-2.

Umina United defeated Kariong United 7-1 at Umina.

Southern and Ettalong United and the Rams delivered a fast-paced and highly entertaining game with both teams creating clear and clever chances, according to Central Coast Football's digital content coordinator Ms Jess Zavolokin.

"An early error from the Southern side allowed East Gosford to weave past their defence and score.

"This was closely followed by another impressive shot from the Rams from just outside the box, catching the away team off-guard.

"Southern and Ettalong United were able to pick themselves up leading into the second half after a series of passes and shots approached their target.

"A goal rewarded their efforts just shy of the halftime whistle.

"The second half mirrored the intensity of the first half," said Ms Zavolokin.

"Southern scored three class goals in the final 15 minutes of the match.

"After starting one step behind the persistent Rams, Southern were able to blaze past the home side to finish impeccably and powerfully," she said.

Ms Zavolokin said Umina was faced with an even mightier and more competitive Kariong squad

than the one they were presented with in the 2019 season.

"Despite a collection of attempts from the away-team, Umina were able to uphold their dominance and have primary possession for the majority of the game.

"The midfield battle proved to be very entertaining with attack-after-attack punctuating the entire game.

"In the second half, Kariong were able to score once, but were unable to execute anymore shots at the goals.

"Kariong's defence was the main decider, having been less agile than Umina's forwards who were craftily evading their opposition and playing direct to net seven goals in total."

SOURCE:

Media release, 19 July 2020  
Jess Zavolokin, Central Coast Football

FORT DENISON

Times are in local standard time (UTC +10:00) or daylight savings time (UTC +11:00) when in effect.

TIDE CHART

LAT 33° 51' S - LONG 151° 14' E - TIME ZONE - 1000

Times and Heights(m) of high and low waters

<b>27</b> MON	0055 1.60 0724 0.40 1349 1.54 1956 0.59	<b>28</b> TUE	0158 1.46 0817 0.46 1450 1.59 2114 0.59	<b>29</b> WED	0309 1.35 0914 0.51 1553 1.64 2231 0.55	<b>30</b> THU	0422 1.30 1012 0.53 1654 1.71 2342 0.48	<b>31</b> FRI	0530 1.28 1110 0.54 1751 1.78	<b>1</b> SAT	0041 0.40 0630 1.30 1204 0.52 1843 1.83	<b>2</b> SUN	0130 0.34 0721 1.33 1254 0.50 1930 1.86
<b>3</b> MON	0214 0.31 0807 1.35 1341 0.49 2014 1.86	<b>4</b> TUE	0254 0.31 0849 1.37 1424 0.49 2054 1.83	<b>5</b> WED	0331 0.33 0929 1.37 1504 0.50 2131 1.78	<b>6</b> THU	0406 0.36 1007 1.38 1544 0.53 2207 1.71	<b>7</b> FRI	0441 0.40 1045 1.38 1624 0.57 2243 1.62	<b>8</b> SAT	0514 0.44 1122 1.38 1706 0.61 2318 1.52	<b>9</b> SUN	0547 0.49 1203 1.38 1752 0.66 2358 1.42

APPROX. TIME LAG AFTER FORT DENISON

Ettalong 40 min, Rip Bridge 2hrs  
Wisemans Ferry 2 hrs 30 min,  
Koolewong 2 hrs 10 min

In view of the variations caused by local conditions and meteorological effects, these times are approximate and must be considered as a guide only. They are not to be relied on for critical depth calculations for safe navigation. Actual times of High and Low Water may occur before or after the times indicated



## Glen becomes Umina's major singles champion

**Glen Simington became Umina Bowling Club's 58th Major Singles champion on Sunday, July 19.**

"After a great game of bowls, Glen managed to come from behind to beat Shane 33-25," said club secretary Mr Peter Springett.

"Shane had led from the start and clung to a slender lead the entire game.

"But Glen had saved his best until the last few ends, when he finally drew level at 25-25. "From then on, there was no holding Glen back, as he drew some cracking shots to finish the game with a three on the final end."

**Website, 20 Jul 2020  
Peter Springett, Umina Bowling Club**

## Woy Woy Roosters looks at its options

**The Woy Woy Roosters is looking at the possibility of entering another competition, after Central Coast Rugby League announced the cancellation of its 2020.**

"With clubs faced with the new crowd restrictions and the inability to raise game day revenue, it became untenable for clubs to continue," said Central Coast Rugby League president Mr Gerard Andrews.

"The decision is also to protect the health and safety of all our players, officials and volunteers.

"We will continue to work hard towards the 2021 season."

Woy Woy Roosters president Mr Tim McParlane said the club's future was unclear.

"In the short term, we are awaiting options on possible entrance into another competition for the 2020 season," he said.

He said that, in the longer term, the club would be affected by the loss of its major sponsor with the closure of the Woy Woy Leagues Club.

"The economic climate for the seeable future isn't very bright

in general, let alone sourcing sponsorship for sporting clubs," he said.

"It isn't all doom and gloom though, with continued support from our supporters and our much appreciated sponsors and with the commitment of our playing group and coaching staff, we will exhaust all options for the future of our club."

**SOURCE:  
Social media, 18 July 2020  
Gerard Andrews, Central Coast Rugby League  
Social media, 19 July 2020  
Tim McParlane, Woy Woy Roosters**



**We will listen to you, believe you, and help you.**  
There is never an excuse for violence.

**1800 65 64 63**  
**NSW Domestic Violence Line**  
24/7 free, confidential support.  
Interpreters available.

 **www.speakout.dcj.nsw.gov.au**

## Southern and Ettalong United suffer narrow loss

**Southern and Ettalong United Football Club suffered a narrow 3-2 loss to Killarney District Soccer Club in Round Three of Central Coast Football Premier League competition on Sunday, July 19.**

"Killarney started the game with a bang," said Central Coast Football digital content co-ordinator Ms Jess Zavolokin.

"The team in the first minute and setting the scene for what was

to be a highly energetic match," she said.

"Despite the rocky start for the away side, Southern and Ettalong United's efforts did not go unnoticed as they fought hard to create many scoring opportunities, only to have their efforts just miss the mark.

"Killarney snuck in another goal just before the first half drew to a close, showing their ability to bounce back with bite after their loss last week to Terrigal United.

"Southern's James Lepre was able to score twice in the second half after a series of great leads, bringing both teams neck-and-neck.

"The latter minutes of the game showed a tiring Southern and Ettalong United team let the winning goal from Killarney past them, after what was an impressive run from the clever squad."

**Source:  
Press Release, 19 July 2020  
Jess Zavolokin, Central Coast Football**

INTEGRITY • LOYALTY • RESPECT



*Freemasonry is a worldwide fraternal organisation that promotes moral and personal development amongst its members.*

Its core values include always acting with honesty and integrity, appreciating and caring for others and assisting those in need.

Freemasonry puts its principles into practice through extensive charitable activities, working closely with our local communities to identify and assist both individuals and the wider community.

In a world too often divided by difference, conflict and alienation, Freemasonry strives to unite men of ALL origins, religions and backgrounds.

The Central Coast is home to a number of lodges meeting at the Gosford or Wyong Masonic Centres on various days and at various times, if you are interested in joining or would like to know more, contact us.



**0481 765 337**



**geoff.bown@hotmail.com**



# LEAVE NO ONE IN NEED

**Please donate now**

**salvationarmy.org.au**



# SMART BED

**EXCLUSIVE TO LIFESTYLE MATTRESS & BEDDING**



**SMART PHONE, SMART TV,  
SMART BED, SMART PERSON!**

**Adjustable Bed Specialists of the Central Coast**

*Lifestyle* **MATTRESS & BEDDING**

**103 BLACKWALL ROAD WOY WOY 4344 6969**  
**OPPOSITE THE LEAGUES CLUB - OPEN 6 DAYS**