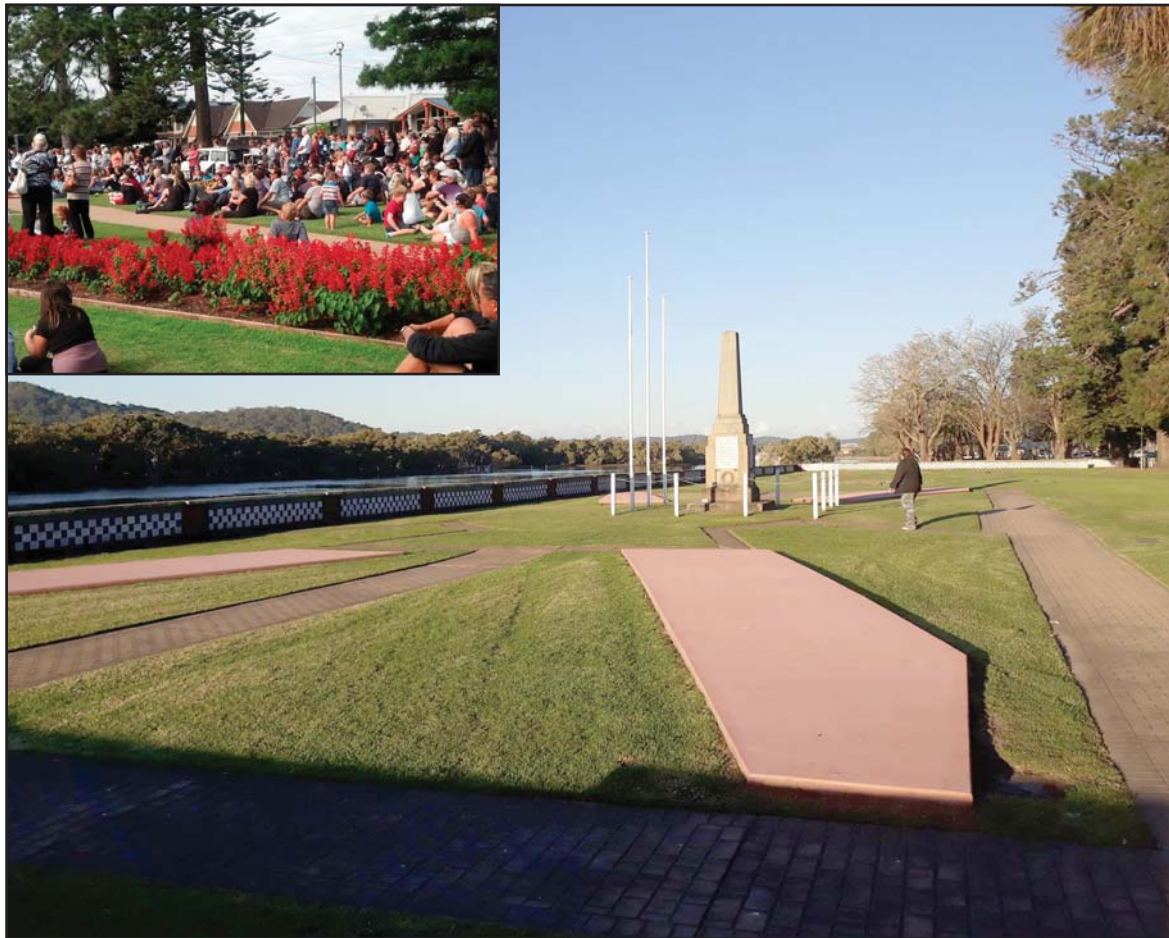


Where have all the flowers gone?



The concreted slabs have replaced flower beds in the War Memorial garden at Woy Woy
Inset: The former flower bed in full bloom behind the memorial

Concreted over every one ...

Central Coast Council has concreted over flowers planted in the shape of the Australian flag in the Memorial Garden in Woy Woy.

The flowers have been replaced with coloured concrete slabs.

The move has been met with strong criticism from local residents.

Save Woy Woy Waterfront president Mr Ross Cochrane has described the concreting as "ridiculous, cheap skate, disrespectful".

Phegans Bay events manager Ms Ylenna Zajec commented on social media: "Just wait until the graffiti artists start painting the concrete slabs."

"Maybe they will paint flowers."

Cr Jeff Sundstrom said he had made ward councillors aware of

the issue along with the Mayor Cr Jane Smith and Council acting-director Mr Boris Bolgoff.

In a written statement, Council chief Mr Gary Murphy said the concrete was installed because the plants were "continually affected" by salt "through sea spray and diffusion through the soil".

The garden in Brickwharf Rd which contains Woy Woy's cenotaph is adjacent to the Woy Woy Channel.

"This has significantly affected the survival rate of plants in the garden bed, often leaving the gardens sparse or bare," he said.

"In addition, the popularity of Anzac celebrations at the site is increasing and the area is unable to effectively and safely accommodate the rising crowds."

Mr Murphy said the Woy Woy and Ettalong Returned and Services League sub-branch had

"agreed that by concreting these areas it will provide more room for people to attend due to the reduced risk of trampling garden beds".

According to the Register of War Memorials of NSW, the site was dedicated as a Soldiers Memorial Park by NSW Governor Sir Philip Game in 1932.

It commemorates those from the district who served in the various conflicts in which Australia has been involved.

It was originally erected in memory of the fallen and those who served in World War I. Those who died in World War II were added.

SOURCE:

Media statement, 14 Jul 2018

Ross Cochrane, Save

Woy Woy Waterfront

Media statement, 26 Jul 2018

Gary Murphy, Central Coast Council

The Whitfields celebrate 60 years of marriage

Long-time Woy Woy residents, Mr and Mrs Keith and Joan Whitfield, have celebrated their 60th wedding anniversary in July.

The Whitfield's grew up and met in Ryde, became childhood sweethearts and married on July 11, 1958.

They had three daughters and moved their family to Woy Woy in 1964, building a modest home and planting a native garden.

The couple still live in the same family home and the garden has won several awards in the local garden competitions.

Mr Whitfield has had a history of service to the Central Coast.

He worked in the Post Office in Woy Woy for over 40 years, served as an alderman for the Gosford Council as well as deputy mayor.

Mr Whitfield was an instrumental figure in saving Riley's Island from development as well as saving Woy Woy Library from being demolished.

He was an announcer on a local over 50's Radio Station as well as an amateur actor in various local stage shows.

Mrs Whitfield managed a corner store with her brother-in-law at Booker Bay, then went on to manage local fashion and jewellery stores as well as provide book keeping services.

They raised three girls all of whom have successful careers.

One is a lawyer, one a counsellor and the other a teacher.

The pair celebrated their 60th anniversary at Saddles Restaurant, Mt White, with their family, friends and the original members of their wedding party – all bar one who sadly died a few weeks prior.

When asked what makes a happy and long marriage, Mrs Whitfield said: "Having love in home with your children, being loyal to each other despite your ups and downs."

Mr Whitfield said the key to a long-lasting marriage was realising that no marriage will ever be perfect and that accepting the bad with the good was the true test of commitment.

"I find it unbelievable that some persons who have discussed long marriages report they never had a cross word, marriages were made in heaven – but so were storms and tempest."

"Good and bad days are to be expected."

"One of the blessings of marriage is companionship and like-thinking so we have enjoyed the ride," he said.

The Whitfield's have received cards and well wishes from the Queen, the Prime Minister, the Governor General and his wife, as well as Member for Warringah Mr Tony Abbott.

SOURCE:

Media release, 21 Jul 2018

Louise Whitfield, Woy Woy



Jeanine Whitfield, Catherine Samuels, Keith Whitfield, Joan Whitfield and Louise Whitfield

Photo by Niki Ryan

THIS ISSUE contains 54 articles - Read more news items for this issue at www.peninsulanews.info

NEWSPAPERS

Central Coast

Office: 120c Erina Street, Gosford
Phone: 4325 7369
Mail: PO Box 1056, Gosford 2250
E-mail: editorial@centralcoastnews.net
Website: www.centralcoastnews.net



News

Peninsula News

Community Access

Peninsula News is a fortnightly community newspaper owned by Woy Woy Community Media Association Inc., an incorporated, non-profit association.

Its aims include providing a viable, non-partisan news medium and forum exclusively for the Peninsula and developing a sense of community on the Peninsula.

See www.peninsulanews.info for all editions published

Editor: Mark Snell

Commercial Operator:

Cec Bucello for Central Coast Newspapers

Journalists: Jackie Pearson, Dillon Luke

Graphic Design: Justin Stanley

Assistant Journalists: Elizabeth Green

NEXT EDITION: PENINSULA NEWS 451

Deadline: August 9 **Publication date:** August 13

Email: editorial@centralcoastnews.net **Ph:** 4325 7369

Peninsula News focusses on post codes 2256 and 2257

Contributions

Letters to the editor and other contributions are welcomed and should be addressed to: Peninsula News PO Box 1056, Gosford 2250. Contributions should be in Word format sent via email to: editorial@centralcoastnews.net, on disks or by handwritten letter if these facilities are not available to you. Contributions must include the date, your name, address and phone numbers. Name and Suburb will be published. Anonymous contributions will not be included. Submissions may be published in edited form.

All accepted contributions also appear on our website.

Legal responsibility for editing, printing and publishing of editorial content in Peninsula News is taken by Mark Snell of Woy Woy, for Woy Woy Community Media Association Inc

Central Coast Newspapers is the commercial operator of Peninsula News

ISSN 1839-9029 - Print Post Approved - 100002922

Printed by Spotpress Pty Ltd Marrickville

Woy Woy Community Media Assoc Inc

2018-19 Membership Application

Peninsula News is unique in being owned by a voluntary community group. Being a member is a great way to show support for the newspaper and to help ensure its continued independence

Name: _____

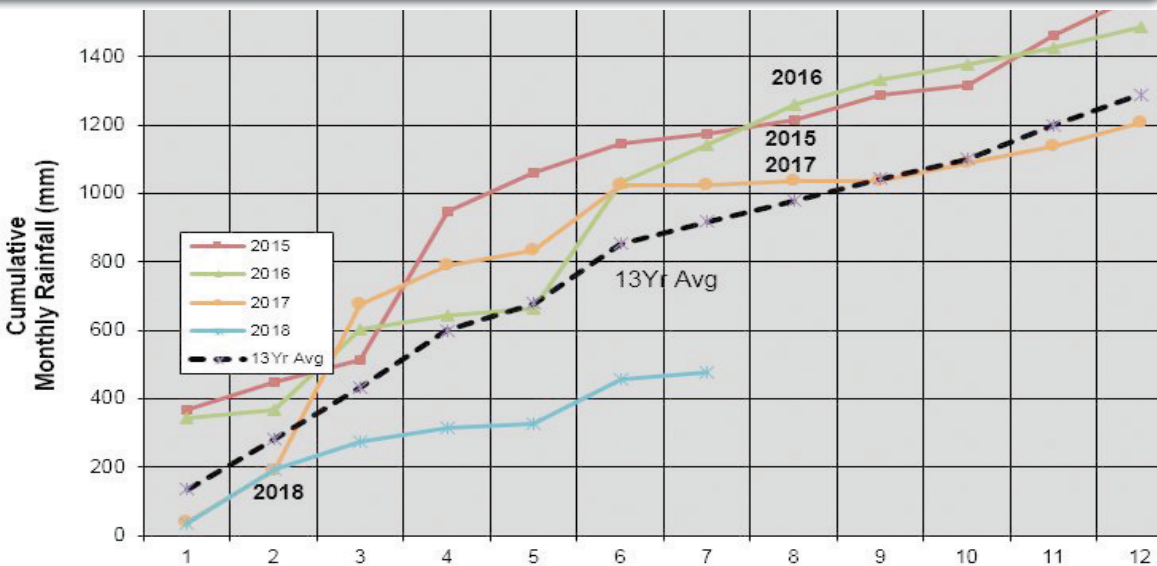
Address: _____

Suburb: _____

Phone: _____

Email: _____

Please send this form together with \$5 to Woy Woy Community Media Assoc Inc, PO Box 585, Woy Woy 2256. Membership fees can be deposited to the association's Greater Building Society account BSB 637 000 Account 717 371 542



False hope of July rainfall

Despite a wet start to the month, July has continued the Peninsula's dry trend with no rainfall recorded from after the 12th.

The first fortnight of July recorded 22.1mm of much needed rain and was a pleasant surprise given July is traditionally the driest month of the year for the Peninsula.

In comparison, in 2017 only 2.5mm of rain were recorded across the entirety of the month, so 2018's above average figure provided some tentative hope that the apparent dry spell the region was experiencing could be lifting.

The unchanged total rainfall for July, has dashed that hope, keeping the yearly total rainfall for the Peninsula well below average

at 476.7mm.

On a positive note, July now joins February as the only two months this year with a higher rainfall record than last year.

As the Peninsula braces for August it is becoming increasingly more likely that we will see a hot dry spring and a scorching summer if 2017's figures are any indication.

YOUR CHANCE TO WIN

The Peninsula News and the Australian Cruise Group would like to offer one lucky reader an evening dinner cruise for two aboard the Clearview Glass Boat Dinner Cruise.

Clearview Cruises set a new benchmark in luxury cruising.

Based on 30 years of experience on Sydney Harbour the ACG have created this new and unique harbour dinner cruise experience perfect for business and special occasion dinners.

In order to maintain the decorum and exclusivity of the cruise, no guests below 18 years of age are permitted on board.



For the first hour of the cruise, you will be invited to the Sky Deck that has a retractable roof, where you can enjoy canapés, drinks and the spectacular skyline of Sydney Harbour, as you cruise under the Harbour Bridge and past the Opera House.

You will then enjoy a quality dining experience in a fully air-conditioned dining saloon, with a 3-course dinner menu.

Smart dress code applies.

For your chance to win the cruise write your full name and contact phone number on the back of an envelope and mail it to Peninsula News ACG Competition, PO BOX 1056, Gosford NSW 2250, before 5pm on Thursday, August 9.

The winners of the Baskerville Competition were Ms Pat Kelly of Woy Woy, Ms Janice Smith of Woy Woy and Ms Ann Noller of Point Claire.

Prize winners may be required to pick up their prize from our Gosford office. Entries may be passed on to prize providers for marketing purposes.

Get the most out of your advertising dollar

NEWSPAPERS

Central Coast

#thisisthelife

Advertise in a Central Coast Newspaper for maximum exposure at a realistic price. Multiple booking and multiple publication discounts apply to all display advertisements. Enjoy the benefits of being in a well-read publication with relevant news content. Contact us now for more information or visit our website.



www.centralcoastnews.net

facebook



www.peninsulanews.info



Office: 120c Erina Street, Gosford - **Phone:** 4325 7369 - **Mail:** PO Box 1056, Gosford 2250
E-mail: editorial@centralcoastnews.net - **Website:** www.centralcoastnews.net

Ettalong channel dredging starts ... or does it?



The dredge at Ettalong Wharf

Dredging of the Ettalong Channel had started on several days last week, according to various media releases received by Peninsula News.

"The emergency dredging is only now beginning, despite being announced nine weeks ago," Member for Gosford Ms Liesl Tesch told Peninsula News on Tuesday, July 24.

Member for Terrigal Mr Adam Crouch told Peninsula News on Thursday, July 26, that dredging was set to start that day.

However, despite the arrival of the dredge at Ettalong Wharf, it did not start work.

Mr Crouch issued a further media release on Friday, July 27, stating that works commenced on the Friday.

Staff from his office assured Peninsula News that dredging had definitely started.

Dredging finally commenced on Friday, July 27, to remove up to 25,000 cubic metres of marine sand from the entrance to Ettalong Channel, Mr Crouch said in his media release.

He said the dredge was larger than the one used previously and could move more sand more quickly.

"The dredge is planned to remove sand to provide a channel

30 metres wide and 2.5 metres deep to allow the ferry service to recommence," Mr Crouch said.

"It is then planned to widen the entrance opening in an effort to slow sand from moving back into the navigation channel," he said.

Parliamentary Secretary for the Central Coast, Mr Scot MacDonald, said progress would continue to be dependent on prevailing weather conditions.

"Initial plans to float the dredge from Yamba to Ettalong had to be reassessed as continued bad weather presented a number of challenges," Mr MacDonald said.

"The contractor had to dismantle the dredge and transport it by road to ensure it could get here as quickly as possible," he said.

Member of the Legislative Council, Mr Taylor Martin, said the works would be the third round of emergency dredging funded by the NSW Government.

"The NSW Government is working with Central Coast Council to establish a long-term plan to maintain and improve boating access at the entrance to Brisbane Water," Mr Martin said.

SOURCE:

Media releases, 26 and 27 Jul 2018

Ben Sheath, Office of

Adam Crouch MP

Media release, 24 Jul 2018

Emma Murphy, Office

of Liesl Tesch MP

Car park to be built near Dark Corner boat ramp

A formal car park costing \$295,000 will be built near the Dark Corner boat ramp at Patonga.

Central Coast Council applied for the funding in August 2017 under the NSW Government's

Boating Now Round 2 funding program.

In a report to the July 23 Council meeting, staff reported that construction of the car park off Patonga Rd would improve access and safety for users of the rank.

It would also increase the

parking available to "meet increasing demand," the staff report said.

The funding will cover the total cost of the project.

SOURCE:

Central Coast Council agenda

item 4.3, 23 Jul 2018

MATTRESS PLUS

BEDDING AND LOUNGE WAREHOUSE

SHOWROOM QUALITY AT WAREHOUSE PRICES



4341 8727

225 Blackwall Road Woy Woy

30% to 60% off
all floor stock items

woywoy@mattressplus.com.au

News



Mary Mac's Place has fully restocked their pantry thanks to the kind donations of Deepwater Plaza shoppers

Food drive sees Mary Mac's stocked well into spring

The Mary Mac's Place Winter Food Drive has received donations of about \$4500 worth of food, according to organisers.

The donations have been used in food hampers for those experiencing hardship and financial difficulty, according to Mary Mac's Place coordinator Ms Catherine Pantehis.

They have also packed the Mary Mac's Place pantry with enough stock to see them through

winter and well into spring.

Ms Pantehis said she had been "so impressed" with the community's response to the food drive held at Deepwater Plaza shopping centre.

"At times, we were overwhelmed with the volume which will undoubtedly make a huge difference to the support we are able to offer people.

"The food donated during the drive has stocked up the pantry for the next few months which means

we can continue to provide this vital service."

Mary Mac's is managed and operated by CatholicCare and is located in Woy Woy, providing over 80 hot meals to local people every Monday to Friday, as well food hampers, washing and shower facilities and is a vital link to services such as Legal Aid and housing, she said.

SOURCE:

Media release, 16 Jul 2018
Jodie Elkin, Deepwater Plaza

Fire brigade benefits from bar sale

The Patonga fire brigade has received \$2125 from the sale of a redundant bar at its local hotel.

The "America's Cup Bar", which was bought from the Sydney Hilton in 2002, was put up for auction in April to make way for renovations at the Patonga Hotel.

Hotel owners, the Boat House Group, sold the bar with its original timber bar top, brass fittings and timber glass rack, according to

media manager Ms Ruby Flew.

The bar was named by the Sydney Hilton because it was used during the 1983 America's Cup.

Renovations at the Hilton saw the bar dismantled and auctioned off in 2002, and bought by then Patonga Beach Hotel owner Mr Robert Osborne.

SOURCE:

Media statement, 18 Jul 2018
Ruby Flew, Boat House Group
Reporter, Dillon Luke

Ettalong home park has bake-off

An Ettalong home park is gearing up for a village bake-off.

Residents at Ingenia Lifestyle Ettalong Beach will put their baking skills to the test from 11am on Tuesday, July 31, for guest judge, Member for Gosford, Ms Liesl Tesch.

Ingenia Ettalong Beach Village manager Mr Paul Greentree said residents were thrilled to have their local MP, seven-time Paralympian Ms Tesch, tasting their treats.

"We are all thrilled Ms Tesch will be joining us and I am sure she is

looking forward to enjoying all the treats on offer," Mr Greentree said.

"I think a few of the residents, myself included, are more looking forward to being able to taste all the baked goods at the morning tea after.

"The village loves getting together and enjoying each other's company, being able to host an event like this is great way for us to help residents keep social and feel special at the same time," he said.

SOURCE:

Media release, 24 Jul 2018
Paul Greentree, Ingenia Lifestyle Ettalong

SCHOLTEN Jewellers ...reborn and now in Galleria Ettalong, the former Ettalong Markets at Ettalong Beach



After retiring in June 2014, Henry Scholten has now opened a small shop in the former Ettalong Markets, only trading on Saturdays, Sundays and Public Holidays.

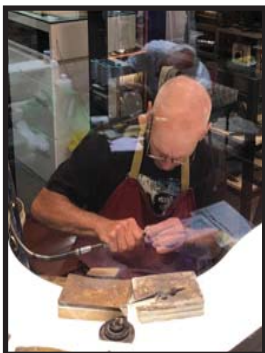
The Ettalong market has been beautifully revamped to a luxury European Galleria style tourist attraction.

Established in 1988, Scholten Jewellers has been manufacturing fine jewellery on the Central Coast for 30 years, having had shops in Bateau Bay, Gosford, Erina and Tuggerah.

Scholten Jewellers is now in Ettalong, providing an excellent repair, design remodelling and manufacturing service.

The location is also an impressive showroom of unique, handmade rings, pendants, earrings, bangles, brooches, chains set with precious and semi-precious gems, and a huge selection of Australian Opal. All repairs and manufacturing is done on the premises in a fully equipped workshop.

Come and say hello to Nicola and Henry at their new Ettalong Beach store, or call them on 0431 670 033 or 0412 655 316.



Tesch calls for outreach resources for homelessness

Member for Gosford Ms Liesl Tesch has called on the NSW Government to urgently allocate outreach resources to help reduce the number of homeless people who are living on our streets.

"A tent community has been set up in Woy Woy, with those sleeping rough in need of acute services such as mental health care, drug and alcohol treatment and medical care, as well as a viable path to permanent housing," she said.

"I have been assisting vulnerable members of our community for many months and it is clear to me that we need more resources so that professional help can be directly delivered to people where they are living.

"Many of these vulnerable members of our community do not have any possessions, making it very difficult to start their journey to recovery and reintegration into society.

"If outreach resources were available, they would have a better chance of accessing the care and assistance that they need."

Ms Tesch said that she has met with local charity organisations, Family and Community Services and NSW Police to discuss this issue.

She commended the caring and hardworking people in those organisations who were focused on trying to solve this growing problem.

"I call on the Minister to allocate

appropriate funding to ensure that the outreach services are available," Ms Tesch said.

Until more resources are allocated, Ms Tesch said she would continue to work with local organisations such as Coast Shelter, St Vincent de Paul, Catholic Care, Partners In Recovery and local Housing representatives to ensure that the best possible outcome for the local community were achieved.

"Local charity and government organisations are stretched to meet the needs of these vulnerable members of our community," Ms Tesch said.

SOURCE:
Media release, 24 Jul 2018
Emma Murphy, Office
of Liesl Tesch MP



Koolewong reserve carpark closed

Koolewong Waterfront Reserve carpark will be closed to the public from Monday, July 30, until Friday, August 3, as Central Coast Council undertakes final carpark and landscaping works.

The works are to complete the last stage of the \$1.48m Koolewong Boating Facility Upgrade, according to Mayor Cr Jane Smith.

There will be no access to the boat ramps or floating pontoons during this period.

Access to the dinghy skid will remain open with pedestrian access only.

The cycleway will remain open. However restrictions will be in place and cyclists and pedestrians have been asked to follow directional signage.

SOURCE:
Social media, 20 Jul 2018
Jane Smith, Central Coast Council

Presbyterian church receives heritage grant

The Woy Woy Presbyterian Church has been a successful applicant in the latest round of the Central Coast Council's Heritage Grant Program.

It will receive \$1875 to complete essential building works and maintenance on St David's Presbyterian Church.

The work will "ensure the longevity of the building and its long-term conservation", according

to Council staff

The funding was recommended conditional on the works replacing existing materials with the same.

SOURCE:
Central Coast Council
agenda 3.3, 23 Jul 2018

INSTALLED IN A DAY!*

PRODUCT SATISFACTION 94.8%

CUSTOMER SERVICE SATISFACTION 93.3%

Stairlifts never looked this good

CALL NOW AND QUOTE PN17 TO RECEIVE \$500 OFF YOUR PURCHASE!

Designed to make your life easier when stairs start to become too much, a **Compact Lift** will easily fit into any home.

Often chosen as an alternative to cumbersome and unattractive stair lifts, a **Compact Lift** will transport 2 people comfortably so you can transform your life without moving home.

A **Compact Lift** is packed with sensors to keep everyone safe, it also plugs straight into a normal power point, runs very quietly and uses less energy than a toaster!

- Quick and easy to install
- Advanced safety features
- Small footprint
- Battery back up
- Flexible positioning options
- Wheelchair model available
- Two year guarantee
- Cost-effective and affordable
- Installed in a day*

Open Door, Step In

Close Door, Press Up

Lift moves through floor

Arrive upstairs



Please Call 1800 842 055

or

Visit www.compactlifts.com.au

for a FREE no obligation survey or for a FREE Brochure

Compact Home **Lifts**

* Wheelchair lifts can take up to 3 days to install in some locations.

Residents meet with council over Umina oval security

Representatives of Umina Community Group, local residents, a security company and a kiosk proprietor have met with the mayor, another councillor and a council acting-director in an attempt to have security improved at Umina Oval.

Umina Community Group secretary Mr Peter Springett and vice-president Mr Mark Nitsos attended the meeting on Tuesday, July 17, with Mayor Cr Jane Smith, Cr Rebecca Gale Collins and Council acting-director Mr Boris

Bolgoff.

Mr Ashley Sefton of Alpha K9 Security and local residents Ms Brie Rodgers and Ms Leanne Kirby joined Jasmine Greens operator Ms Gabby Greyem at the meeting.

"All attendees pleaded with Council for better lighting of the area, lighting of the skate park and increased security patrols," Ms Greyem said.

"They also asked for more youth services and youth workers to be present in the area," she said.

"We have only had one visit from the Regional Youth Support Services Bus in two years.

"We haven't seen Council youth workers in the area for years.

"Currently I play the role of park ranger, youth worker, first aid officer and general community helper – responding to injured children, calling ambulances, calling Council when the toilets or park equipment is broken, calling the police when, as happened today, teenagers set a butane can on fire in the park.

"This is over and beyond my responsibilities as a tenant of Council."

Ms Greyem said the mayor was told of a Saturday night gathering

of over 250 teenagers in the area.

"When police arrived, the teenagers ran into the dark and couldn't be identified as it was so dark.

"Mr Sefton told the mayor that his company is contracted by Council to run dog-assisted security patrols of Terrigal CBD and Gosford CBD.

"These patrols, accompanied by lighting, have worked to make these areas safe at night.

"He told the mayor that the same approach needed to be taken in Umina.

"Brie Rodgers and Leanne Kirby said there has been no improvement in crime prevention or in the provision of youth services on the Peninsula, since they held a community meeting hosted by former State Member for Gosford Ms Kathy Smith in 2016.

"Mark Nitsos explained to the mayor that he had been trying to get the lights turned on in the Peninsula Recreation Precinct at night for several months, but despite promises that the lights would be turned on, they had not been turned on.

"Mr Nitsos told the mayor and Mr Bolgoff that it was imperative that the area was flood lit at night like Bateau Bowl and Banjo's Skate Park.

"He said no lights had been

tried for years and there had been no reduction in crime.

"He said lights were needed to deter crime and antisocial behaviour.

"I presented the mayor with more than 2000 petition signatures collected over the past two years and asked for formal recognition of receipt from Council.

"I also put together a summary for the meeting which was given to the mayor and all meeting attendees."

Ms Greyem said: "Council has a positive role to play in building positive community experiences.

"The recreation precinct is a vibrant community hub which needs a small investment from Council to make it a safe and thriving destination all of the time."

Ms Greyem said support for the measures outlined to Cr Smith and Mr Bolgoff had included endorsement from the Member for Robertson Ms Lucy Wicks and Mr Taylor Martin MLC and Member for Gosford Ms Liesl Tesch.

She also said letters of support from the community, media coverage of the issues and support from local business and community organisations was evidence the Council needed to act.

SOURCE:

Media release, 17 Jul 2018
Gabby Greyem, Jasmine Greens

CCTV installed free of charge

A local fire protection company has installed eight new closed-circuit television cameras at a break-in prone Umina kiosk free of charge, following media coverage of the situation.

Mr Matt Marland from Marland Fire Protection installed the

cameras at Jasmine Greens near Umina Oval.

A local hardware shop also pitched in with some security sensor lights to help illuminate anything captured by the new cameras.

SOURCE:

Media release, 17 Jul 2018
Gabby Greyem, Jasmine Greens



Liesl Tesch MP
Member for Gosford

How can I help?

Schools and education

Community Recognition Awards

Anniversary & birthday messages

Fair Trading

Hospitals and health

Main roads

Police and Emergency Services

Public housing

Trains and public transport



📍 20 Blackwall Road, Woy Woy NSW 2256

@ Gosford@parliament.nsw.gov.au

☎ (02) 4342 4122



LABOR WILL DELIVER

\$15 million to build Commuter Car Parks

- ✓ **More parking
for Commuters**
- ✓ **More jobs for
the Coast**
- ✓ **Supporting Local
Businesses**

Find out more at: www.nswlabor.org.au/central_coast_parking

INFRASTRUCTURE ANNOUNCEMENT

Labor



www.facebook.com/SenatorDebONeill

Email: senator.o'neill@aph.gov.au



Council calls failed wharf applications ‘excellent’

Central Coast Council staff failed to justify the description of unsuccessful grant applications as “excellent” when challenged by deputy mayor Cr Chris Holstein at the July 23 Council meeting.

The question was “taken on notice” and an answer will be provided at a later meeting.

Cr Holstein asked staff to explain why they considered two applications to the NSW Government for funding of \$11.9 million to be spent on the Woy Woy Ferry Wharf and the Ettalong Ferry Wharf an “excellent outcome” when not a cent of State

Government funding was secured.

Cr Holstein said he had been campaigning for the upgrade of the Woy Woy Ferry Wharf, in particular, since the Council election last September.

In October 2017, Central Coast Council submitted two formal Expressions of Interest and developed business cases for funding under the NSW Government’s Regional Growth Environment and Tourism Fund.

A staff report to the July 23 Council meeting did not provide details of the works proposed for the Ettalong Ferry Wharf but stated that a total of \$6,755,083 was requested which was for 100

per cent of the project cost.

A second Expression of Interest and business case was submitted for the redevelopment of the Woy Woy Town Centre Wharf.

The total cost of the project was listed as \$5.3 million but the application was for \$5.1 million and, again, was unsuccessful.

The staff report claimed it was an “excellent outcome as all...projects submitted were shortlisted”.

“Feedback given was that the two wharf projects require further development,” the report said.

SOURCE:

Central Coast Council agenda 4.3, 23 Jul 2018
Reporter: Jackie Pearson

Applications rejected

The NSW Government has rejected applications from Central Coast Council for a shared pathway at Ettalong and works at the Patonga Holiday Park.

Council had estimated that the cost of the shared pathway along Barrenjoey Road at Ettalong would cost around \$1.3 million and had applied for \$890,000 assistance from the state.

It also proposed to use \$100,000 from the NSW Government to upgrade the amenities block at the popular local camping ground.

Both applications were made under Round 1 of the Stronger Country Communities program and both were unsuccessful.

According to a staff report to the July 23 Council meeting, “The program had a limited amount of funding allocated to the Central Coast Local Government Area.

“Some unsuccessful priority project applications have been updated and resubmitted under Round 2,” the staff report said.

SOURCE:

Central Coast Council agenda 4.3, 23 Jul 2018

Upgrade rejected

Almost a year after an application was made to upgrade the Woy Woy Bay Wharf, councillors have been advised the application was unsuccessful.

Central Coast Council applied to the NSW Government in August 2017 under Round 2 of its Boating Now program for \$40,000 for works at the wharf.

A staff report has now informed councillors that the application was

unsuccessful.

According to the report to the July 23 Council meeting, the money would have covered construction of modular floating finger pontoons and upgrades to existing wharf facilities.

“These upgrades would allow ease of access to and from the wharf and improve accessibility,” the report stated.

SOURCE:

Central Coast Council agenda item 4.3, 23 Jul 2018

It's time for a Chemical CleanOut.

You can drop off for free:

- Household cleaners
- Fluorescent globes and tubes
- Car and household batteries
- Motor oils and fluids
- Paint
- Garden, pool and hobby chemicals
- Gas bottles and fire extinguishers
- Poisons

Only household quantities accepted.



For more information call the Environment Line on 131 555 or visit www.cleanout.com.au

This project is a NSW EPA Waste Less, Recycle More initiative funded from the waste levy

Make your home safer and dispose of chemicals the right way for FREE

Drop off your household chemicals between 9.00am and 3.30pm on:

Saturday 4 and Sunday 5 August
Gosford Showground car park
Showground Road, Gosford

Saturday 11 and Sunday 12 August
Council's Charmhaven Depot
Corner Chelmsford and Depot Roads
Charmhaven

Only household quantities accepted. A 20 litre or 20 kilogram maximum container size per item applies

Please transport your materials carefully and remain in your vehicle at the collection site.



Central Coast Council

**LOWER, FAIRER,
SIMPLER TAXES
DELIVERED**

**By keeping the economy strong, we
are **delivering immediate tax relief.****

✓ **59,823** taxpayers in Robertson to benefit
from **income tax relief in 2018-19**

✓ **Long-term plan** to stop workers moving
into higher tax brackets

✓ **Reducing** the cost pressures on
households

FACT

**LABOR VOTED AGAINST
TAX RELIEF FOR WORKING
AUSTRALIANS.**

**YOU ALWAYS PAY
MORE UNDER LABOR**



LUCY WICKS MP
Federal Member for **Robertson**

Authorised by Lucy Wicks MP, Liberal Party of Australia, Level 3, 69 Central Coast Highway, West Gosford NSW 2250.

🏠 Level 3, 69 Central Coast Highway, West Gosford NSW 2250

☎ 4322 2400 @ lucy.wicks.mp@aph.gov.au

🌐 lucywicks.com.au 📘 LucyWicksMP



Association objects to 150m fence

The Wagstaffe-Killcare Community Association has written to Central Coast Council objecting to a 150 metre long two metre high metal fence at the top of Wards Hill Rd "at the entrance to the peninsula".

Association vice-president Mr Mike Allsop described the fence as "completely out of character for the area" and "having been erected without consent".

"We understand the desire of the owners to fence the property, but would encourage them to submit a design with see-through characteristics with suitable

landscaping to comply with local planning requirements and to enhance the entrance to our area.

"This would also demonstrate a level of respect and inclusivity for the community, and would be well received."

Mr Allsop said the owners had submitted a development application since erecting the fence to move part of it one metre back to enable some planting to be installed in front of it, while leaving the remainder as was.

"The DA was advertised and community responses sought via the standard process," Mr Allsop said.

"Along with others, the

association lodged a considered response relating to Council's own Development Control Plan, Local Environment Plan and Character Statement for the area.

"Our response was shared at the community meeting on July 9, and strongly endorsed.

"In essence, we have highlighted that the nature of the fence (an opaque visual barrier) and its position close to the boundary contravenes all local planning requirements, particularly the open scenic character specified for this area, and should be removed forthwith.

"This applies not just to the section subject to the DA, but to

the entire run of fence along the Wards Hill Rd boundary to the property," Mr Allsop said.

"We have also written directly to Mayor Cr Jane Smith, noting the inconsistencies in process which seem to have accompanied this matter over the last nine months or so.

"In response to community concerns Councillors have flagged this DA to be considered at an upcoming Council meeting, possibly in August," Mr Allsop said.

SOURCE:
Newsletter, 26 Jul 2018
Mike Allsop, WTKCA

Belinda Neal fights party expulsion

The Gosford Australian Labor Party State Electoral Council has announced on July 17 that the former Member for Robertson, Ms Belinda Neal, is no longer a member of the party.

The ABC reported later that the NSW Labor Internal Appeals Tribunal had, on July 24, recommended expulsion for unworthy conduct.

However, Ms Neal said she had not exhausted all appeal avenues in her fight against expulsion.

Ms Neal said the matter would be "before the national office" on Monday, July 30, when it would be heard by an adjudicator who was "completely independent and would not be leaned on".

SOURCE:
Media statement, 17 Jul 2018
Genny Murphy, Gosford ALP
State Electoral Council
Interview, 25 Jul 2018
Belinda Neal, Woy Woy Bay
Reporter: Jackie Pearson

Two-storey units may replace end-of-life fibro house

A residential flat building has been proposed for 4 Clifford St, Umina.

The proposal received by Central Coast Council would see a two-storey, three-unit residential flat building replace the single fibro dwelling currently located on the 674 square metre residential block.

A statement by Wales and Associates submitted to Council in support of the project said the existing residence with tiled roof and detached clad garage with fibro roof had "reached the end of

its economic life".

The proposed flat building does not comply with Gosford planning controls for street, side or rear setbacks.

The developer has asked for Council's support to vary its setback requirements on the basis that "the intensity of the proposed development ensures that the floor space ratio controls in the Gosford Local Environmental Plan 2014 are complied with, the proposed development remains compatible with predominant patterns of buildings and gardens that define

the existing and desired character of the local neighbourhood."

Another justification given for the non-compliance with setbacks was that "the proposal conserves important elements of existing scenic quality, in particular the prominent trees located along Memorial Ave on Council's road reserve and the adjoining trees along the south eastern boundary and ensures reasonable amenity for both existing and proposed dwellings."

Half road construction will be required as part of the development

of the site, according to Wales and Associates.

Adjustments will also need to be made to the footpath to accommodate the proposed ingress/egress and pedestrian access.

At the closure of the period for public comment on the development four submissions had been received by Council.

SOURCE:
DA54622/2018, 26 Jul 2018
Gosford DA Tracker,
Central Coast Council

Peninsula flooding to be studied

Flooding on the Peninsula will be studied to determine the best way to address it.

Central Coast Council is expected to spend \$240,000 on the

study, and has received \$160,000 towards the cost from the State Government.

The outcome of the study will be known as the Woy Woy Catchments Floodplain Risk

Management Study and Plan.

"This planning must be undertaken prior to funding applications for works," Council staff told the July 23 Council meeting.

"The Woy Woy Peninsula is prone to flooding in both short and long duration rainfall events," it said.

"Flooding occurs in both road reserves and on numerous

residential properties throughout the Peninsula."

SOURCE:
Central Coast Council
agenda 4.3, 23 Jul 2018

Renovating? Need New Blinds, Awnings or Shutters?

Come Visit The Coast's Biggest Showroom For Blinds, Plantation Shutters and Awnings, including motorization.

Or call for a Free in-home Measure and Quote.

\$100 off when you mention this paper[#]

CHOOSE THE LOCAL EXPERTS AT

18/482 Pacific Highway, Wyoming. Ph : 02 4324 8800

www.premiershades.com.au

conditions apply. Purchases over \$1000

PREMIER
shades-awnings-blinds

Free English classes at church

Free classes for Peninsula residents whose first language is not English have started with the new school term.

The English as a Second Language classes will run from the Woy Woy Presbyterian Church on Tuesday's from 9:15am to 12pm throughout the school term.

The focus of the classes will be on improving English conversation skills in a relaxed social environment.

There are beginner, intermediate and advanced levels available for participants.

Anyone interested should contact the Church to register.

SOURCE:
Social media, 24 Jul 2018
David Green, Woy Woy Presbyterian Church



Proposal to replace single dwelling with three units

A single-dwelling house at 80 Victoria Avenue, Woy Woy, will be demolished to make way for a three-dwelling, multi-unit housing development if it receives Council approval.

The proposal does not comply with the minimum lot size requirement of that Gosford planning instrument by a variation of 7.3 per cent but it does comply for height and floor space.

"The proposed multi-housing development is considered as minor scale development that merely seeks to upgrade the existing housing stock in the locality," the Clarke Dowdle statement said.

"The proposed development is located in a low-volume trafficked street.

"Given the site is zoned as medium density residential the

absorption capacity is considered as acceptable in this instance."

However, in terms of compliance with the Gosford Development Control Plan, the proposal doesn't meet the requirements for deep soil front and rear setbacks and side and rear boundary setbacks.

It also falls short of the DCP's parking requirements by 2.5 spaces.

The DCP also required a minimum area of 50 square metres per unit of outdoor space and a minimum width of 3.5 metres but the proposed Unit 2 will only have 47 square metres of outdoor space.

The consultant lists 14 other recently approved developments in the Peninsula area with similar non-compliances to argue for approval of the 80 Victoria Rd proposal.

"The design and siting

of the villas meet the overarching objectives of the setbacks clause and is considered acceptable for the medium density residential zone," the consultant said.

"The two storey unit development would allow greater than three hours solar access to the living areas and private open space areas of the villas.

"The courtyard areas would be commensurate with the size of the outdoor private open spaces provide to the multi-unit development in the Peninsula area.

"In this instance, the multi-unit housing would be located within walking distance of outdoor and

indoor recreational facilities which allows for occupants to regularly participate in outdoor or and social pursuits."

Access to the new multi-dwelling complex would be via a driveway along the eastern boundary and separate garages provided for each unit, according to a statement in support of the proposal prepared by consultants Clarke Dowdle and Associates,.

"The proposed units include front courtyard fencing that provide sufficient areas to store mobile waste collection bins away from the street and from the courtyard areas within the site," the statement said.

The site is zoned R1 – General Residential under the Gosford Local Environmental Plan 2014.

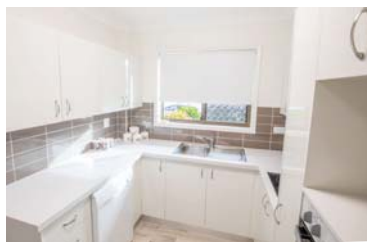
SOURCE:
DA54685/2018, 26 Jul 2018
Gosford DA Tracker, Central Coast Council

Your Choice, Your Lifestyle

One and two bedroom independent living units are now available from \$340,000

Peninsula Village and Cooina Village in Umina Beach offer a range of options for locals looking to make a lifestyle choice for their golden years.

- Dishwasher
- Built-in robes
- Reverse cycle air conditioner
- Modern fittings
- Quality kitchen with stone benchtops
- New carpet & vinyl
- Pantry
- Laundry
- Tranquil & maintained gardens
- Access to Peninsula Villages onsite facilities



Book a tour of our Villages today.

Phone 02 4344 9199 or email lisad@penvill.com.au

Peninsula Village | 91 Pozieres Avenue Umina Beach
Cooina Village | 2-18 Neptune Street Umina Beach

 **Peninsula**
VILLAGES
Your Life, Your Choice, Our Communities

Emergency dredging has taken too long - Tesch

Member for Gosford Ms Liesl Tesch has claimed that the "emergency dredging" of the Ettalong Channel has taken too long and no long term solution is in sight.

"The State Government's failure to implement a long-term solution for the Ettalong Channel is continuing to impact on local commuters, school students and businesses.

"The emergency dredging is only now beginning, despite being announced nine weeks ago, and the community knows that this will fail to provide relief to the ongoing problem in the channel," Ms Tesch said.

She said the NSW Government must take responsibility for their navigable waterway which is

clearly a state responsibility.

"The Liberal Government is more than happy to draw an income from boat licences and moorings on our waterways yet they continually fail to provide a real solution to the Ettalong Channel," Ms Tesch said.

"The community is fed up.

"They want to be safe on our local waterways and to use the public transport ferry to get to and from work and school, to visit family and friends and provide a viable service for tourists to access our community," she said.

"Dredging of the channel is economically very important to communities on both sides of the channel.

"Despite the Member for Terrigal, Adam Crouch, announcing that the \$660,000 emergency dredging



started on June 25, locals report that they are yet to see the dredge in operation.

"The lack of action is simply not good enough and the Liberal Government is yet again ignoring thousands of people who have signed my petition to the NSW Parliament calling for a proper solution to our dredging concerns.

"The State Liberal Government must stop cost shifting to rate-payers and finally take responsibility for this issue.

"The local community cannot afford to wait any longer for action in our channel.

"Stop spending money on stadiums in Sydney and fix our vital waterway," Ms Tesch said.

Ms Tesch said she had received a written update from NSW Roads

and Maritime Services on July 19 implying that the dredging would commence early in the week of July 22.

The update came via the RMS from Crown Lands who are responsible for the delivery of the dredging.

"The contractor, Sandpiper Dredging, has delivered the necessary dredge components and has them located near the Woy Woy boat ramp site," the update said.

"It is the contractor's intention to have a crane available for July 20 to assemble the components by lifting and placing them into the water at the Woy Woy boat ramp," it said.

"During this operation the public boat ramp will be occupied for

around six hours, but is subject to crane availability, tides and conducive weather condition.

"The nearby more popular boat ramp will not be affected and will remain available to other users wishing to launch their vessels.

"A pre-construction meeting with the Contractor was held on Wednesday, July 18, NSW RMS was also in attendance.

"Crown Lands, RMS, the contractor and a representative from the Umina Boardriders Club travelled to the entrance of Ettalong Channel to observe the problematic shoaling and discuss the scope of the project.

"Deeper areas to the west of the dredging site for placement of the dredged sand were also identified.

"Placement of sand in these deeper locations has the potential to enhance the popular surf break.

"Today [July 19], the contractor is assembling the pipework at Ettalong Beach.

"At this stage, the weather forecast for early next week looks favourable but conditions could change.

"The dredge will require relatively stable sea conditions (low swell) to operate effectively."

SOURCE:

Media release, 24 Jul 2018

Emma Murphy, Office

of Liesl Tesch MP

Media statement, 20 Jul 2018

Liesl Tesch, Member for Gosford

Tidal baths inspection may lead to remedial work

A council inspection of the Woy Woy tidal baths on Brickwharf Rd may lead to "remedial work", councillors have been told.

"Council is actively seeking approvals from the Department of Fisheries to undertake remedial works on all netted swimming enclosures," a report tabled at the July 23 Council meeting stated.

"These works will include removal of rubbish or large debris; removal of seagrass or seaweed wrack; scrubbing algae from stairs and entryways and removal of sand from the floor of ocean baths;

scraping of oysters and algae from pylons, steel bars and /or concrete walls," it said.

"Council periodically removes encrusting aquatic growth from the walls of netted baths in accordance with an Environmental Assessment and permit from the NSW Department of Primary Industries (Fisheries).

"Council will be developing an Aquatic Infrastructure Strategy for the management and development of these assets...in the 2018-19 financial year," the report said.

SOURCE:

Central Coast Council agenda 4.4, 23 Jul 2018

THINKING OF SELLING?

List and Sell your property through us, mention this ad and we will rebate \$500 upon settlement !!

FREE MARKET APPRAISAL - OBLIGATION FREE
Quick response, Quick turn around, Service and Civility!

Licensed Real Estate Agent,
Stock Station Agent, Auctioneer

Lois Jones
Real Estate

4339 7644 - lois@loisjonesrealestate.com

Ferry services may start in four weeks, says association

The Wagstaffe-Killcare Community Association vice-president Mr Mike Allsop believes ferry services could start in about four weeks, if dredging proceeds to schedule.

"The dredging will apparently involve an initial dredge cut that is aimed at reinstating the channel suitable for ferry operations," he said.

"This is expected to take three to four weeks, weather permitting, which means ferry services could potentially re-

commence in mid-August," Mr Allsop said.

"Once the initial cut has been completed, we understand that the dredge will continue to widen the channel with the goal of increasing channel longevity.

"This will be welcome news in an attempt to avoid the chaos that the current situation has caused.

"We have not yet heard of Council's plans for working with the State Government to ensure continuous access to the channel in future, but believe

that their plans will be integrated with the overall strategy for reinstatement and management of the beach front at Umina and Ocean Beach.

"Hydrodynamic modelling of this area is already being undertaken.

"Integrating the channel works would make sense as it would then cover the currents and sediment movements in the entirety of the entrance to Brisbane Water."

SOURCE:

Newsletter, 26 Jul 2018

Mike Allsop, WTKCA

Court & Insurance Specialists

- Personal injury and work related claims
- Building disputes – advice and representation
- Commercial/business litigation
- Probate, wills and disputes
- Conveyancing
- Family law

CBD LAW
Solicitors & Attorneys

NSW Law Society Accredited Specialist since 1996

Solving legal problems effectively and efficiently for the Coast and Mountain communities for over 20 years



move forward | take action | get results
25 Alison Road, Wyong 4353 1248
98 Mann Street, Gosford 4322 6666

Committee will focus on waters around the Peninsula

Management plans for the waters around the Peninsula will be the main focus of a new Catchments and Coast Committee for Brisbane Water and Gosford Lagoons, which held its first meeting on June 21.

The role of the committee will be to advise Central Coast Council on the sustainable management of its coastal, estuarine, waterways, catchment and flood liable areas.

The Committee recommended to Council that Mayor Cr Jane Smith be appointed as chair.

It also recommended that Council staff write to the NSW Office and Environment and Heritage inviting them to have two non-voting representatives as regular committee members – one for environment management and one for floodplain management.

The meeting also mapped out an action plan for the next four quarters which included an overview of the Coastal and Estuary Management plans and vision for the committee at its second meeting in September.

In the third quarter the group will discuss the Floodplain Management Plans and review Development Control Plans.

At its March 2019 meeting

it will discuss the Catchment Management Program and an overview of the Coastal Management Act.

The management plans in place that it will refer to are the Brisbane Water Estuary Management Plan, Pearl Beach Coastal Zone Management Plan, Gosford Beaches Coastal Zone Management Plan and Gosford Lagoons Floodplain Management Plan.

According to its terms of reference, the advisory group is responsible for providing advice and feedback to Council on ensuring current community values are considered in the development of local floodplain risk, estuary and coastal zone management planning.

It will also be responsible for helping Council to identify the flood, coastal and estuary health problem areas to be assessed and provide input into known hazard behaviour.

In undertaking its duties the committee will be required to include sustainable climate change adaptation actions based on widely accepted competent scientific opinion and ensure consistency with Council's climate change policy (which is currently under development).

The terms of reference also state the group will monitor and assess the effectiveness of local management plans during and after their implementation.

It will promote linkages and cooperation between community, Council, State and Federal Governments and other key stakeholders in the development and implementation of coastal, estuarine, catchment and floodplain management studies and plans.

It will advise on funding, capital works, maintenance and operations, environmental protection and a range of other associated policies, strategies and laws.

Another of its responsibilities was listed in the terms of reference as supporting, promoting and liaising with relevant authorities in the development of emergency management and catchment management strategies.

In addition to the Mayor, Cr Troy Marquart and Cr Richard Mehrtens are members of the committee.

Community members are listed as Ian Carruthers, Andrew Jones, Michael Kilp, Jenny McCulla, Adrian Williams and Samantha Willis.

SOURCE:
Central Coast Council
agenda 3.2, 23 Jul 2018

Wales to consult client before meeting residents

Local planning consultant Mr Matthew Wales has told the Save Our Woy Woy community group he would ask his client before agreeing to discuss the proposed \$11 million Farnell Rd development with the group.

The development would see a 37-unit three-storey block of flats and seven two-storey townhouses built in place of four houses on the corner of Blackwall Rd.

Principal of planning consultants Wales and Associates, Mr Wales told Save Our Woy Woy president Mr Harvey McDougall he would contact his client.

"Regardless, I am happy to keep in touch with you," Mr Wales said.

Mr McDougall wrote to Mr Wales, who is also Peninsula Chamber of Commerce president, to invite him to meet with residents.

He asked Mr Wales to "explain to them why you think our suburb needs to have developments that do not respect the character of Woy Woy".

"I am a resident of Woy Woy and do not wish to have our suburb changed into a concrete jungle similar to Sydney suburbs," Mr McDougall said.

"I am sure that you can understand the community's anger and concern for their suburb."

"Its history and holiday atmosphere are what make Woy Woy and it is not necessary to change that dramatically at this stage," he said.

Mr McDougall and Mr Wales copied the Peninsula News in on their email exchange.

"In relation to your request that we meet with local residents to discuss your concerns, I will seek instruction from my client in this regard," Mr Wales said.

"I would also confirm that this office takes seriously our obligation to consider public submissions and objections to this development and would also confirm that we will be responding to those submissions with a formal response to Central Coast Council."

The proposed development has resulted in well over 100 objections being lodged with Council.

Mr McDougall and Save Our Woy Woy have also started campaigning for a review of zoning in certain areas of the Peninsula.

SOURCE:
Email, 16 Jul 2018
Harvey McDougall, Save Our Woy Woy
Matthew Wales, Wales and Associates



Never underestimate the power of a donation.

Join Deepwater Plaza on Friday 17 August for a community day full of fun and excitement. We invite every customer that enters the centre to make a gold coin donation entry fee to shop.

All money raised will support the Central Coast Children's Fund.

Let's make a difference together.

In partnership with:



Proudly supported by:



deepwaterplaza.com.au



One-on-one technical support



Whether you're time-poor or just find technology a bit daunting, we're here to help. Our Platinum experts can get your technology working the way it should, even if it's not a Telstra product.

\$15 /mth
for 12 months.
Min cost \$180

TELSTRA PLATINUM® SERVICE SUBSCRIPTION

- Ongoing support in-store
- 24/7 support over the phone and online

WHAT'S COVERED?

- Support for a wide range of devices
- Help with common software applications
- Technical support and coaching for your services, network, gadgets, and common problems.

To learn more chat to Chris or Shane today.

Telstra Store Woy Woy

🏠 Deep Water Plaza, Woy Woy

☎ 02 4341 0061

📍 Opposite the Greater Building Society

THINGS YOU NEED TO KNOW: Telstra Platinum®. Only for eligible Telstra consumer customers. Telstra Platinum services for computers are only available for Windows and Mac OS and are not available for some devices and software. Fair use policy applies. The cost of any software/hardware is not included in the price of the service and you are responsible for any data charges. For details of pricing for Telstra Platinum services, ask for more information in-store or visit www.telstra.com/platinum. The spectrum device and "T" are trade marks and ® are registered trade marks of Telstra Corporation Limited, ABN 33 051 775 556.

Forum

Pleas ignored by indolent council

In defence of Jasmine Greens Kiosk, Central Coast Council has been caught out again.

We now learn that the Council-leased Jasmine Greens Kiosk in Umina has once again been damaged by vandals.

The kiosk manager Ms Gabby Greyem's plea for help has been ignored by this indolent Council.

The forward thinking and positive members of the Central Coast Council must be embarrassed by the remaining councillors who are exhibiting their continual negligent

Forum

approach to matters of importance.

On three occasions 2016-2017 petitions were presented to Council and ignored for the need to have community lighting and CCTV cameras replaced or repaired.

The promised funding by Council in 2016 for a Barista Beating Crime project has not been allocated either.

The abhorrent behaviour by this Council shows its complete lack of responsibilities to businesses and

the ratepayers on the Peninsula.

One wonders how many other matters of importance and responsibilities this Council has not acted upon.

Let us hope the new CEO Mr Gary Murphy will be able encourage a change of the thinking by the remaining councillors to the importance of replacing or repairing the CCTV to prevent further vandalism and theft to businesses around the Jasmine Greens Kiosk and Restaurant.

Email, 18 Jul 2018
Robert Welch, Ettalong

Discovering the truth about disabled parking

Up until a few months ago I didn't think about the number of disabled parking spaces provided by all sorts of service providers.

Now that I can't get about like I used to I am discovering the truth.

Basically, nobody thinks about the problems we have getting to and from shops, railway stations, sporting venues and just about everywhere.

Take a look at Peninsula Plaza, five spaces.

The lucky ones who spring a spot think they have won the lottery.

By the time you have collected your trolley, wandered around the various shops and made it back to your car way over in the back rows you are exhausted.

About the only way to get to park there is to be there before dawn.

Oh I forgot about the one provided by the Council not far from the library.

That's right, one space in the whole of the Woy Woy CBD.

Deepwater Plaza isn't much better.

Aldi at Umina, has two.

Forum

LETTERS TO THE EDITOR

should be sent to:

Peninsula News

PO Box 1056, Gosford 2250 or
editorial@centralcoastnews.net

See Page 2 for
contribution conditions

Negative response, yet the trend continues

With monotonous regularity, the Peninsula News reports on the latest development applications that highlight the trend in mid-rise, over-development residential applications.

Each time we are reminded of

Forum

how these applications exceed zoning height and floor to space regulations, while also adversely impacting traffic conditions and impairing the character of the local neighbourhood environment.

Negative community response is abundant, yet the trend continues.

One can only surmise that developers feel confident that their applications will be accepted with or without modification.

Email, 19 Jul 2018
Suraya Coorey, Woy Woy



Linda Emery
Lawyer
Since 1983

Hospital &
Home Visits
By Appointment

Specialising in:

FAMILY LAW

- Divorces
- Children's Issues
- Binding Financial Agreements
- De facto
- Property

WILLS & ESTATES

- Probate, Wills & Disputes
- Power of Attorney
- Enduring Guardianship

So much more than just law...



Linda Emery
& ASSOCIATES PTY LTD

LAWYERS & CONVEYANCERS

Ground Floor, Suite 6, 22 Watt St Gosford

CONVEYANCING

- Purchase & Sale of Property
- Refinancing Mortgages
- Purchase & Sale of Business
- Leasing
- Retirement Villages

COURT APPEARANCES

- Criminal Law
- Traffic Matters
- AVO Matters
- Drink Driving

4323 4766

Email: lemery@lindaemery.com.au

Web: www.lindaemery.com.au

I used to like catching the train.

Getting about seeing NSW and visiting old mates.

No can do now.

No spaces anywhere near Woy Woy Station, or any other station for that matter.

If you want to go to Woy Woy Oval, better be early, only two spaces.

Then the nearest spaces are time restricted and the Council inspectors just love booking patrons on a Sunday afternoon.

Must be sports lovers.

If the team is playing away the numbers of reserved places at other venues range from none to very few.

The only answer I can see is for the various levels of governments to introduce a requirement for the numbers of spaces to be a specific percentage of the total spaces on any particular site.

The ageing population of the whole of Australia, and the Peninsula in particular, need to be able to continue to enjoy their mobility and freedom to go wherever they want with a reasonable chance that we all will be able to park without difficulty.

It would only take a few minutes with a stencil and a can of paint to do this.

Email, 20 Jul 2018
Laurie Powell, Woy Woy



Adam Crouch MP

Member for Terrigal

"Working for you"

4365 1906 @ terrigal@parliament.nsw.gov.au f [AdamCrouchMP](https://www.facebook.com/AdamCrouchMP)

Shop 3 Fountain Plaza, 148-158 The Entrance Road, Erina NSW 2250

Authorised by Adam Crouch MP, Shop 3 Fountain Plaza, 148-158 The Entrance Road, Erina NSW 2250.

ADVERTISEMENT



Forum

Kerb and gutter in my lifetime?

Call me cynical but when I read the headline that Council will no longer charge property owners for kerb/guttering or footpaths I thought that it was a good decision, but reading further into the article the non-payment is only for planned works.

I would like to know if the old kerb or footpath needs repair or replacement due to age etc. will this new kerb or footpath be covered by this resolution?

It also seems to be very good timing for the redevelopment of the

Forum

Terrigal CBD. Fancy that!

I have lived on the Coast for 30 years and only one property I have lived in had kerb and guttering (no footpath) and that was only because it was on a main road.

Sure I haven't lived in or around The Entrance, Wamberal, Terrigal, Avoca or in a new subdivision.

My current property has been paying rates for over 65 years and still no kerb, guttering or footpaths.

There probably won't be any in my life time.

Email, 24 Jul 2018
Carl Veugen, Umina Beach

Walk is a pleasure, except for the footpath

Take a walk (that is if you are game) along the Beachside Esplanade of Umina Beach on a bright sunny day with a slight sea breeze blowing.

What could be more beautiful in life, except for the broken substandard footpath that you have to use.

If you don't twist an ankle or trip and hurt yourself on the very neglected pavement, then you will be fortunate indeed.

For disabled persons, those in wheelchairs, or mothers with

prams, there are no access ramps to cross the road so you are obliged to stay on the path or risk your life on the road.

The Esplanade walk from Ettalong to Umina is truly a pleasure except for the miserable state of the footpath.

Shame on our Council for letting it fall into such disrepair.

Email, 14 Jun 2018
R Fountain, Booker Bay



COULD YOUR KITCHEN DO WITH A FACELIFT... AT LESS COST? DON'T REPLACE IT, REFACE IT

Transform the look of your kitchen by fitting replacement doors, drawer fronts, panels, handles and bench tops.

Create a brand new look and feel with no compromise on quality, choice and design.

DREAM DOORS®
AMAZING KITCHEN FACELIFTS

CALL JOHN
0423 765 246

NEWSPAPERS

Central Coast

Other Regional News - In brief

Peninsula News focuses on news specifically relating to post code areas 2256 and 2257. Given the advent of the new Central Coast Council, following is a summary of the first 9 news articles published

in the most recent edition of each of our sister Central Coast publications. The full articles and more, as well as all previously published editions, can be seen on line on our website www.peninsulanews.info and

on www.centralcoastnews.net. Copies of these other publications may be obtained from our offices in Gosford, by subscription, or from a myriad of locations in the areas covered by each publication.

COAST COMMUNITY NEWS

JULY 19, 2018

YOUR INDEPENDENT COMMUNITY NEWSPAPER - PH: 4325 7369

ISSUE 187

Urgent recommendations from two year old consultant's report ignored

More than two years after an east coast low savaged Wamberal Beach, the public has been given access to a consultant's report that urged Central Coast Council, then under administration, to immediately remove inappropriate materials from the

Actions in storm erosion report could have fixed asbestos problem two years ago

Recommendations in the Wamberal Beach Storm Erosion Remediation Report, which Central Coast Council received on July 19, 2016, could have resulted in removal of all dangerous and inappropriate materials from the beach but it did not.

Council to hand out 1,500 native trees

The green canopy across the Central Coast will be increased by a Central Coast Council resolution to hand out 1,500 native trees to the community, and developing an Urban Forest Strategy.

Council staff respond to the presence of asbestos on Wamberal and Terrigal Beaches

A staff response to an urgent resolution made by Central Coast Council on April 23 about asbestos on Wamberal and Terrigal Beaches is expected to be discussed at the July 23 Council meeting.

Minister asked to carefully consider the consequences of seismic testing

The Disabled Surfers Association of Australia has called upon Federal Minister for the Environment and Energy, Josh Frydenberg, to carefully consider the consequences of supporting any further seismic testing or potential oil or gas

Council staff respond to Urban Design Implementation Framework

The staff of Central Coast Council want to keep control over all development consents, and have questioned how reducing developer levies will pay for the revitalisation of Gosford, in a submission to Coordinator General, Lee Shearer.

The people have spoken – revitalisation needs to happen and needs to happen now

Overwhelming support to get on with the revitalisation of Gosford CBD was the key theme to emerge from the Central Coast community as it had its say on the latest comprehensive measures to renew the region's capital.

Lucy Wicks sceptical of Labor's promised \$15m parking plan

Labor's promise of \$15m to build three commuter car parks across the Central Coast is a gross underestimate of the costs involved, according to the Member for Robertson, Lucy Wicks.

Commuters' Association calls for a bipartisan approach on car parks

The Central Coast Commuters' Association is calling on all sides of politics to work together to deliver long term relief to local commuters by developing extra car parking near stations, following Labor's \$15m car park announcement.

The full articles and more can be seen on line on our website www.centralcoastnews.net. Coast Community News focusses on news specifically related to post code areas 2250, 2251, 2260 and articles can also be read and shared on your mobile phone by going to www.coastcommunitynews.com.au.

WYONG REGIONAL CHRONICLE

Issue 145
25 July, 2018

Your independent community newspaper - Ph: 4325 7369

Pristine environmental bushland turned into a desolate wasteland

Massive clearing in Ourimbah Rd, Kangy Angy, to make way for the NSW Government's Intercity Rail Fleet Maintenance Facility, has already turned pristine E2 and E3 bushland into a desolate wasteland, according to residents.

Angry Kangy Angy residents alarmed at environmental damage

Transport for NSW has used State Environmental Planning Policy (Infrastructure) 2007, which applies in all areas of NSW, to forge ahead with the rail maintenance facility in sensitive E2 and E3 land at Kangy Angy.

Transport for NSW makes major modification to construction process

Transport for NSW has proposed to modify the approval for its Intercity Rail Maintenance Facility at Kangy Angy to include a temporary access road for use during construction.

McBride concerned about advice provided by scientific committee

Member for Dobell, Emma McBride, has expressed concerns about some elements of advice provided to the Federal Environment Minister, Josh Frydenberg, on Wallarah II.

Aero Club believes airport is a vital community asset that does not need to expand

Central Coast Aero Club (CCAC) President, Andrew Smith, has outlined the club's position on the future of the airport at Warnervale.

Motion to leverage Sister City relationship with Edogawa fails

Councillors Greg Best and Bruce McLachlan attempted to move a motion to encourage Central Coast Council to leverage its Sister City relationship with Edogawa, Japan, to call for an end to scientific whaling.

McLachlan calls for more flexible Rural Land Zones to increase tourism opportunities

Independent Councillor, Bruce McLachlan, wants to see more flexibility in the Central Coast's Rural Land Zones to increase opportunities for tourism and youth employment.

Developer seeks to modify council consent

A developer has applied to Central Coast Council to modify its consent for an \$8.5m asphalt plant to operate at 203 Tooheys Rd, Bushells Ridge.

66-lot subdivision for small lot housing proposed

A 66-lot subdivision for small lot housing, valued at \$20.7m, has been proposed for 533 and 539 Pacific Hwy and 24 Van Stappen Rd, Wadalba.

Wyong Regional Chronicle focuses on news specifically relating to post code areas 2258, 2259, 2261, 2262, & 2263. The full articles and more can be seen on our website www.centralcoastnews.net

Health



Lions club members with ambulance personnel

Lions donate trauma teddies

Woy Woy Lions Club have donated 72 trauma teddies to local Clare NSW Ambulance Service and Umina Beach and Ocean Beach Surf Life Saving Clubs to be handed out to young children and adults they encounter in their day to day duties.

"The teddies will be handed out in trauma incidents including accidents and familyviolence situations, when people just need something to cuddle," said Woy Woy Lions Club president Mr Ian Taylor.

"What better than a soft Lions Teddy?

"Our club will continue to monitor the stock each group is holding and will replenish stock as required.

"We are also working closely with other clubs on the Central Coast to see if we can expand this project beyond the Peninsula.

"A couple of our members are in discussions with the various women and children refuges on the Coast to see how we can introduce them to the world of Lions Trauma Teddies," he said.

SOURCE:

Media release, 24 Jul 2018
Ian Taylor, Woy Woy Lions Club

Charity bowlers raise \$995

Charity bowlers raised \$995 at Woy Woy Sporties at their July Charity Bowls Day.

"Only 32 bowlers braved the cold weather at our July event, but our numbers were bolstered by the Woy Woy Leagues Social Club and our other supporters," said event organizer, Mr Ken Dixon.

"We raised \$795 on the day, but a donation of \$100 from the Pelicans Fishing Club and another \$100 from the Wednesday bowlers increased the takings to \$995.

"On top of that, the Woy Woy Lions Club recently donated \$500 to the cause, which brought our year-to-date total to around \$8300," Mr Dixon said.

The money raised is donated to Central Coast Kids in Need, which uses the money to assist families

who have seriously ill children with prolonged illness, Mr Dixon said.

The money is used to defray the costs of accommodation for the families, to cover travel costs, equipment requirements and pharmacy accounts.

SOURCE:

Media release, 20 Jul 2018
Ken Dixon, Woy Woy Charity Bowls

Woy Woy
Osteopathic Centre
Osteopathy and Accupuncture

Gentle treatment for back or neck pain, joint problems, headaches and more.

David Legge and Damon Clark
112 Blackwall Rd Woy Woy
Ph 4343 1340

Your local, independent hearing specialist



Penninsula Hearing

"We are hear for you"



Why choose Penninsula Hearing?

- Proudly local & **INDEPENDENT** hearing clinic
- **FREE** hearing screenings
- **SAVE THOUSANDS** on the latest hearing aid technology
- **FREE** services to eligible Pensioners and Workcover claimants (Government accredited)
- **NO OBLIGATION TRIALS**

Wanted: 15 people to trial the latest Signia hearing aid technology. Call (02) 4342 9736 to book your **FREE** trial!

Shop 6, 2 Berith Street, Umina Beach
www.penninsulahearing.com.au

August is dental awareness month

Have you been wearing a denture for more than 12 months?

During the month of August, if you bring this notice with you, we will give you a free denture assessment and clean.



LOCALLY OWNED AND LOCALLY MANUFACTURED



A. Wegner
DENTURE CLINIC
30 YEARS IN BUSINESS

66 Ocean Beach Road, Woy Woy

4341 8888



www.wegnerdentureclinic.com.au

Are You Looking For An Experienced, Affordable & Gentle Dentist For Your Family?



General Dentistry



Cosmetic Dentistry



Implant Dentistry



Laser Dentistry



Children's Dentistry

NEW SMILE SPECIALS

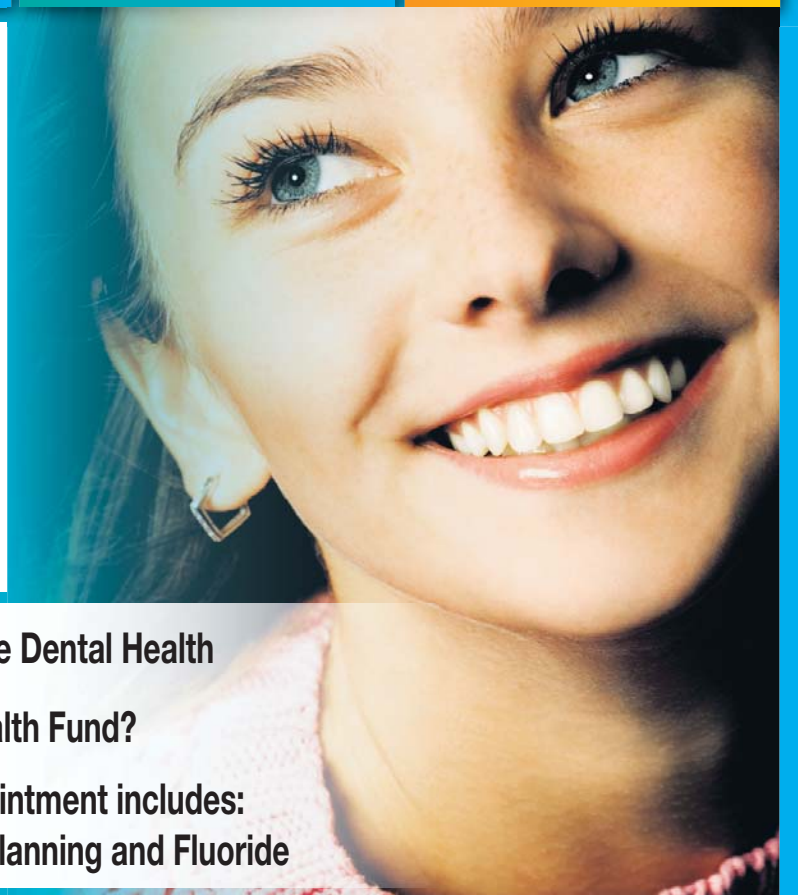
Packages on Dental Implants & Smile Designing

NO GAP

Exam and Clean appointment for Private Dental Health

Insurance patients. Not with a Health Fund?

Just pay \$179 Includes FREE Xrays worth \$160 The 60 minute appointment includes:
Full Comprehensive Exam, Clean and Polish, OPG X-rays, Treatment Planning and Fluoride



A whiter brighter Smile in one hour PHILIPS Zoom White speed in chair teeth whitening special - only \$595 (normally \$950)

Free Assessment for dental implant.

• single tooth replacement • full mouth rehabilitation over 4-6 implants • implant supported dentures

0%

INTEREST ON PAYMENT PLANS

Gosford Dental Lifeline

We provide reasons to smile

Ph: 4323 7007



Gosford
Bondi

Bulk Billing

\$1,000 Free Dental Care for children age 2 to 17 - Ask us for the Details



Dr. Meena Gambhir



Dr. Namita Mehta

PORCELAIN VENEERS | FREE CONSULTATION | INVISALIGN

Saturday Appointments Available - We accept Veteran's Affairs patients

Shop 1, 201 Mann Street, Opposite Gosford Train Station, Gosford 2250

gosford@dentallifeline.com.au | www.dentallifeline.com.au



medicare



John with the teddy bear family

Teddy bears help soothe children's fears, says hospital

A local hospital has claimed its collection of teddy bears has worked to soothe the fears of young patients.

Brisbane Waters Private Hospital's CEO, Ms Kathy Beverley said: "One of our gorgeous patients, John, aged 2, recently had surgery with Dr Shashi Singh.

"He was a very brave little boy.

"John and his mum were very anxious about going to another hospital again.

"Once he was met by our teddy bear family, his fears were gone and he had a wonderful experience," she said.

"His mum told staff how wonderful their experience was and that John wasn't always comfortable in new environments, but everybody was so lovely and welcoming that he stayed happy and brave the entire morning.

Ms Beverley said at Brisbane Waters Private staff strived to create a welcoming and soothing

environment for all patients, but especially their youngest ones.

"We love our Kids Days here at the hospital.

"We love the teddy bears, the staff dress ups and the room

decorations and we pride ourselves on making a difficult time enjoyable for children," she said.

SOURCE:

Social media, 18 Jul 2018
Kathy Beverley, Brisbane Waters Private Hospital

THE NEURO-SLIMMER SYSTEM™
THE NO EXERCISE
NO DIET
FAT LOSS SECRET

WWW.HOWTHEMINDWORKS.INFO/SLIM

PENINSULA PODIATRY @ 7 VIDLER AVENUE, WOY WOY

FOR GENERAL PODIATRY TREATMENTS - DIABETIC FOOT
MANAGEMENT - NEUROLOGICAL / VASCULAR TESTING -
ASSESSMENT DIAGNOSIS & TREATMENT OF TOENAILS,
CORN, CALLUS, AND WARTS - LOWER LIMB ASSESSMENTS -
BIOMECHANICAL & GAIT ANALYSIS - PAEDIATRICS (CHILDREN)
FOOTWEAR ASSESSMENT ORTHOTIC CONSULTATION
and FALLS PREVENTION

**WE ARE MEDICARE & DVA APPROVED - PRIVATE FUNDS WELCOME -
HOME VISITS ON REQUEST**

PLEASE PHONE THE CLINIC 4339 5501 / 0419 144 840

CAROLYN LENTHALL B.POD 0419 144 840

MARYANNE McHUGH B.POD 0409 687 100



**Do you have difficulty eating?
Are you unhappy with your smile?
Dentures loose or uncomfortable?
Denture over 5 years old or broken?**

Yes? Then come see us at...

smiles
on the Coast

**FREE
CONSULTATION**

**Bring this advertisement with you for a 10% DISCOUNT on all repairs,
relines and new dentures • All work done in-house • Quality guaranteed**

Shop 16A / 153 Mann St. Gosford NSW 2250



4323 6834

www.smilesonthecoast.com.au

Education

“Opera on the Coast”?

With spring just around the corner it appears that we have landed our very own Opera season on the Coast. Including the one off performance of *Madam Butterfly* by Opera Australia involving the Conservatorium's Central Coast Opera Children's Chorus, the full scale production of Central Coast Opera's *La Boheme* at the Laycock Street Theatre in August and Central Coast Lyric Opera's *Tosca*, the Coast is in for a wonderful season of opera and a true celebration of one of the greatest composers of all time, Giacomo Puccini.

Puccini's music is crafted with genius that sends us on spine tingling emotional journeys and when it comes to composers, Puccini is certainly the best of the best. What better way to kick-off our first opera season on the Coast with a Puccini fest!

So why opera on the Coast?

Perhaps the Coast has a more discerning audience than we thought or is opera more accessible to all and not just an elite musical form for classical music boffins?

From my perspective I think it's the latter. The splendour and magic that opera brings to the stage is breath taking and unique. It's engaging for people of all ages and is not that far removed from music that we hear at the movies.

Yes, opera is classical music but no different to what we experience in blockbuster movies with orchestral soundtracks. Some fine examples include: *Jurassic Park*, *Harry Potter*, *Pirates of the Caribbean* and *Star Wars*.

The most famous of all *Star Wars* is referred to as space opera with John Williams, the composer, using musical themes to introduce characters into scenes in true operatic style. We all know who is about to enter a scene when we hear the *Darth Vader* theme.

The great composers of the past have inspired the music for the big screen and we happily immerse ourselves in this type of classical music. If you enjoy movie music then the world of opera and the music of Puccini is certainly accessible.



**CENTRAL COAST
CONSERVATORIUM**
OF MUSIC
TRAINING AND EDUCATION

Patrick Brennan
CEO/Artistic Director
Central Coast Conservatorium
P 4324 7477
E admin@cccmusic.nsw.edu.au



Umina Beach PS students cutting the ribbon on their new Buddy Bench

Buddy Benches unveiled

Umina Beach Public School has unveiled its new Buddy Benches.

“Our Buddy Benches were unveiled on July 3 in the playground in an official ribbon cutting ceremony,” said principal Ms Lyn Davis.

“We are looking forward to

seeing how these seats build more positive relationships between students.”

The benches are installed on school playgrounds for students feeling lonely, isolated or who wish to make new friends, she said.

She said the idea behind the benches was that students would

see a student sitting on a bench and then approach them to sit and chat or invite them to play, fostering new relationships and opportunities for socialisation.

SOURCE:
Website, 3 Jul 2018
Lyn Davis, Umina Beach Public School Facebook page



Students hit the beach to continue their studies

Join Our Team

We are currently looking for casual Registered Nurses & Care Service Employees to join our team.

Why work for us?

- Flexible Hours
- Salary Packaging Available
- Friendly & Supportive Team
- Not For Profit Organisation
- Career Opportunities
- Subsidised Gym Membership

Want to Apply?

Application forms are available on our website or from reception at BlueWave Living. Once complete you can email your application to jobs@bluewaveliving.org.au



BlueWave
LIVING

EXCELLENCE IN RESIDENTIAL
AGED CARE

6 Kathleen Street,
Woy Woy NSW 2256
Phone: 02 4344 2599
www.bluewaveliving.org.au

Students learn about micro-organisms

Year 6 students from Umina Beach Public School travelled around Umina on July 5 as part of their science unit.

As part of their study of micro-organisms, students visited Bakers Delight Umina, Umina Library and Umina Beach.

Students studied yeast and its role in baking, watched a presentation at the Library and collected samples at the beach.

SOURCE:
Social media, 5 Jul 2018
Lyn Davis, Umina Beach Public School

Two students given early entry to university



Zoe Souness



Liam Hylton-Evans

Two students from Brisbane Water Secondary College Woy Woy Campus have been accepted into a Macquarie University program.

Zoe Souness and Liam Hylton-Evans have both been accepted into an early entry program. Souness will undertake a Bachelor of Media.

Hylton-Evans will study a Bachelor of Global Business.

SOURCE:
Social media, 24 Jul 2018
Paul Gilmore, BWSC Woy Woy

Fun Friends program at Umina

Kindergarten, Year 1 and Year 2 students at Umina Beach Public School will be participating in a Fun Friends Program throughout Term 3. Over the coming weeks,

students will be focusing on ways in which people's families and homes are similar and different.

"They will be learning about happy times and scary times and how to be brave when times are scary," said principal Ms Lyn Davis.

She said key components students focused on during the first week of the program included: Sense of identity (who am I, saying who you are to others); Feeling scared is okay; Being brave; Similarities and differences in people; Social skills; and healthy lifestyle choices.

The program aimed to foster better emotional and social wellbeing amongst students and to instil the importance of empathy, perseverance and community mindedness in students' day-to-day actions, Ms Davis said.

SOURCE:
Newsletter, 24 Jul 2018
Lyn Davis, Umina Beach Public School

A MEETING TO SUPPORT THE ABC

At the Central Coast Leagues Club, Parkview room on Friday, 3rd August. The meeting will commence at 6.00 p.m. Our speakers include:

- Michelle Rowland M.P., shadow minister for communications.
- Dr Fiona Martin, a former ABC broadcaster, currently a researcher and journalism educator at the University of Sydney.
- Sinddy Ealy, ABC section secretary of the Community and Public Service Union.

Tickets: \$15.00 p.p. preferably pre-paid by 26th July, 2018. Pre-pay via the Greater Bank: BSB 637-000, Friends of the ABC Central Coast, account number 781348279, or by direct deposit at a Greater Bank branch. If mailing, send a cheque to 'The Treasurer, P. Preston, P.O. Box 4189, East Gosford 2250.' finger food is included in the ticket price

RSVP: by email to ross.mary1@bigpond.com or SMS: 0439440955, if calling please do so between 6.00 pm to 8.00 pm weekdays.

Room open at 5.30 pm. Bar will be open, food served after question time

Sponsored by


NEIL DIAMOND'S HOT AUGUST NIGHT THE CONCERT

The re-creation of one of the greatest live albums of all time...



SATURDAY 4TH AUG

SYDNEY HOTSHOTS

The Secret Fantasies Tour



18YRS+

SATURDAY 11TH AUG

ONLY CENTRAL COAST VENUE IN THEIR AUSTRALIAN TOUR!

FROM THE UK, '60s/'70s HITMAKERS... THE FORTUNES

ALL THE HITS AND MORE!



THURSDAY 30TH AUG

 **ETTALONG DIGGERS**
ETTALONG BEACH WAR MEMORIAL CLUB LIMITED
ABN 99 001 011 392
51-52 THE ESPLANADE, ETTALONG BEACH NSW 2257
(02) 4343 0111

FOLLOW US
  

THE ART HOUSE

WHAT'S ON

Book your tickets to these great shows and many more at:
WWW.THEARTHOUSEWYONG.COM.AU
02 4335 1485

THE ARROW OF SONG

THE SONG COMPANY

FRIDAY 10 AUGUST

A stunning show exploring the history of a capella music in one time-travelling concert.

FIONA O'LOUGHLIN

STAND UP COMEDIANS

SATURDAY 11 AUGUST

This hilarious features Fiona's greatest hits of comedy, a selection of the most popular stories and jokes from her astounding career on stage.

SYDNEY COMEDY FESTIVAL SHOWCASE

THURSDAY 16 AUGUST

Featuring the crème de la crème of the 2018 Sydney Comedy Festival Festival!

Education

Umina school plans open day

Umina Beach Public School will have an Open Day on Wednesday, August 8, in celebration of Education Week.

“There will be a change from the usual routine, as the hall will be used for the K-2 Musical,” principal Ms Lyn Davis said.

“Open classrooms will occur between 10:45am and 11:15am. “Parents will be able to bring a picnic lunch to share with their children in the playground. “Pre-made sandwiches and limited hot food will be available from the canteen as well. “If you wish to pre-order your

lunch from the canteen, this must be done on Tuesday, August 7,” Ms Davis said. “During lunchtime you can visit the library (to see the book fair) and enjoy a treat from the Stewart House cake stall,” she added. The Stewart House cake stall will be stocked by students in

Years 3 and 4. “Snack items will also be available from the Big Bite Canteen during the lunch break. “Children will return to class at 12:15pm,” Ms Davis said.

SOURCE:
Newsletter, 24 Jul 2018
Lyn Davis, Umina Beach Public School

Photo donated to Umina campus

A photograph of Umina Beach has been donated to the Umina campus of Brisbane Water Secondary College.

“Umina photographer Ms Marilyn McKay took this shot of Umina Beach to go into our admin reception area,” said principal Mr Brent Walker.

“Marilyn has a long-standing association with Umina campus, from watching it get built to sending her three children and now two grandchildren here. “This framed photo takes pride of place in our brand new foyer and shows our strong ties to the community,” he said.

SOURCE:
Website, 20 Jul 2018
Brent Walker, BWSC Umina

ADVERTISEMENT

Taking a Road Trip has a lot to offer

Just like a trip to Kangaroo Island with **Road Runner Tours** by coach where you to can sit back, enjoy the journey, but get to see amazing places.

Kangaroo Island is seven times the size of Singapore with all its natural beauty and wildlife, where you get to spend 3 nights of this 15 day holiday adventure.

By coach there’s always more to see and with this trip you will combine the sea with the outback by visiting the Flinders Rangers, with it’s 540 million year old landscapes and visiting a Natural Amphitheatre and the Aroona

Ruins – the first cattle station in the Flinders Ranges.

But there is plenty more happening with a guided tour of Adelaide City, a visit to the German town, Hahndorf, taking a Horsedrawn Tram ride, going up the Murray on a Paddlestreamer, a visit to a Whale Centre and Honey Farm, to wander and explore, to name a few of the great places you will see.

To find out more contact **Road Runner Tours** on **02 4353 9050** and ask for a full itinerary or go to **www.roadrunnertours.com.au** for all upcoming tours & daytrips. *Photos courtesy of SATC Corporate Site.*

COACH TOURS

Day Trips

All pickups from Doyalson to Woy Woy

Kurri Murals
Monday 3 September 2018
• History of the region depicted in murals
\$47 pp

Nepean Belle Lunch Cruise
Thursday 11 October 2018
• Enjoy a relaxing day on the Paddle Wheeler boat
\$99 pp

Mystery Trip
Friday 2 November 2018
• Who knows what the day will bring
\$69 pp

Christmas Lunch + Show on Sydney Harbour
Tuesday 20 November 2018
• Come and celebrate the festive season on a 4 hour cruise
\$104 pp

Hunter Valley Christmas Lights
Wednesday 12 December 2018
• View the stunning display of the largest display in the Southern Hemisphere
\$87 pp

Live Shows

'A' Reserve Seats. All matinee shows.

Jersey Boys 13 Dec 2018
Capitol Theatre
\$140 pp

Charlie and the Chocolate Factory 16 Jan 2019
Capitol Theatre
\$120 pp

Muriels Wedding 24 Jul 2019
Lyric theatre
\$140 pp

15 Day | Dep 17 Sep 2018

Kangaroo Island

• Hahndorf • Adelaide City Tour • Horsedrawn Tram • SA Whale Centre • Sealink Ferry • Seal Bay • 3 nights in Kangaroo Islands • plus more...

\$4,344 pp twin share

MOTEL ACCOMMODATED

4 Day | Dep 8 Oct 2018

Canberra Floriade

• Lake Burley Griffin Cruise • Canberra Floriade • War Memorial • Mt Ainslie • Parliament House Tour • Royal Australian Mint Tour • Tulip Top Gardens • plus more...

\$997 pp twin share

MOTEL ACCOMMODATED

6 Day | Dep 10 Oct 2018

Riverina Regional Tour

• Roundhouse Museum • Lavender Hill Cherry Orchard • Warbirds Downunder Airshow • "The Dish" at Parkes • Grenfell Town Tour • plus more...

\$1,508 pp twin share

MOTEL ACCOMMODATED

Tours include motel accommodation, dinner, bed, hot brekky & entries.

Free home pick-ups south of the Hunter River, east of M1 and all Central Coast – extended tours only. Conditions apply.

BOOK TODAY 4353 9050

www.roadrunnertours.com.au

ROAD RUNNER Leisure Tours

Travel Australia at 'see' level!

SINCE 1979

GALLERIA ETTALONG BEACH

189 Ocean View Rd, (cnr Schnapper Rd) Ettalong Beach

'Great things are done by many small things brought together'

OPEN: every Sat & Sun + Mon Public Holidays

Shop 31-32 OPEN as above

HAFAS MEDITERRANEAN CAFE

Traditional Turkish

- *Kebabs Shish/Doner
- *Breakfasts *Gozleme
- *Fish+Chips *Salads
- *Coffee Espresso/Turkish

P: 0450 997 884

Shop 67-69 OPEN as above + Mon,Thu, Fri 7.30-4pm

MAXIMA COFFEE

Specialty Coffee anytime

COFFEE ROASTERS

- * Coffee Plungers + Stovetops
- * Assist purchasing Italian made espresso machines

Shop 1 OPEN as above + Thu, Fri 10-4pm

TIKI LA LA

Vintage Décor

- *Fashion *Vinyl

A curiosities boutique specialising in all things vintage. Take a trip down memory lane.

P: 0404 660 633

Shop 1a OPEN as above + Wed,Thu, Fri 10-4pm

CLARA'S SHOES

FOOTWEAR, FASHION ACCESSORIES

- *European Designs including Stegmann plus MG
- *Seniors 10% discount
- *Many quality Leather shoes

P: 0438 715 532

Shop 2-3 OPEN as above

ETTALONG RUGS

A good range of modern and traditional designs of carpets, rugs and runners

Unbeatable prices!

P: 0468 762 176

Shop 2b OPEN as above

CASA MYSTIQUE

UNIQUE Clothing, Gifts Fashion and Decor

Established at Ettalong since 2004. Look up, down, in and around so many wonderful things to be found!!

P: 0425 715 134

Shop 4 OPEN as above

FINE SILVER JEWELLERY

SILVER BRACELETS, NECKLACES & RINGS

A stunning selection of The finest silver jewellery with semi-precious stones and elegant designs

P: 0416 795 210

Shop 4a OPEN as above

ECO ORGANICS

CLEANING PRODUCTS HAIR CARE / SKIN CARE

Best range of Organic Products in Aus! Skin/Oral care, vitamins, health foods, cleaning products

P: 0414 888 710

Shop 4b OPEN as above

ISTANBUL BAZAAR

TURKISH HANDMADE Beautifully designed products

- *Ceramic bowls/plates/tiles
- *Cotton towels + clothing
- *Glass mosaic lamps/lanterns

P: 0451 477 712

Shop 6-7 OPEN as above

TIBETAN 3 SISTERS

Handmade Tibetan

- *Jewellery
- *Antique arts
- *Meditation/Singing Bowls
- *Ladies/Mens Clothing
- *Himalayan Jackets

P: 0424 683 282

Shop 8 OPEN as above

LEE'S WATCH REPAIRS

WATCH+CLOCK REPAIR

- *BATTERIES *ACCESSORIES
- *Watch repair or new batteries while u wait
- *Range of clocks for sale
- *Accessories/watch bands

Phone not available

Shop 8a OPEN as above plus anytime Tues - Fri

'PLEASE LEASE ME'

Vacant Glass sided shop 4m x 4m approx. IDEAL FOR: Florist, Gourmet items Home Décor or innovative products

P: 0404 860 300

Shop 9 OPEN as above

JAMES ART STUDIO

Original acrylic, coloured ink, impressionist paintings. Landscapes, seascapes, etc. Sculptures: authentic looking dinosaurs/dragons

P: 0451 533 830

Shop 10 OPEN as above

WOOD U

Unique, quirky, creative recycled timber furniture with metal and glass. Plus home décor, sculptures, mirrors. 'Jerry Can' Bars.

Wood U Dare?

P: 0415 355 861

Shop 11 OPEN as above

SPIRIT CONNECTIONS

CRYSTALS, FOSSILS PSYCHIC READER

A crystal + metaphysical shop - old fashioned service Tibetan singing bowls.

P: 0428 712 251 0407 139 353

Shop 33-34 OPEN as above plus anytime Tues - Fri

VACANT CAFE

Opportunity to create your own cuisine. Seats 40. Refrigerated Display Unit, Coffee Machine, Crockery Chairs & Tables etc.

P: 0404 860 300

JOIN MANY MORE BOUTIQUE BUSINESSES ESTABLISHED AT GALLERIA



CENTRAL COAST OPERA

LA BOHÈME

PUCCINI

English translation by Amanda Holden

18–26 AUGUST 2018
LAYCOCK STREET
COMMUNITY THEATRE
NORTH GOSFORD



BOOK: 43 233 233

ADULT \$50 | CONC/STUDENT/GROUPS 10+ \$40

CHILD \$35 | <http://bit.ly/CCO-LaBoheme>

NEWSPAPERS
central coast



**CENTRAL COAST
CONSERVATORIUM**
OF MUSIC
TRAINING AND EDUCATION



Children hold market at Killcare

The Bouddi Kids Create Market was held at Killcare Surf Life Saving Club on Sunday, July 22.

The local market is run by children for children and was held for the first time back in April.

“All Killcare Nipper families who came along got to see just

how much fun the kids were having running their own stalls at this fantastic event,” said Killcare Community Connect member Ms Anna Trigg.

Young stall-holders can sell anything as long as it is made, created or performed by them.

“Popular stalls on the day

included: baked goods, crafts, clothes, art, music performances, and magic acts,” Ms Trigg said.

Fifteen per cent of profits made on the day were donated to the Community Garden Project.

SOURCE:
Newsletter, 23 Jul 2018
Anna Trigg, Killcare Surf Life Saving Club

Wagstaffe art show to be held in September

The Wagstaffe-Killcare Community Association’s annual art show, Inside The Square, will be held at Wagstaffe in September.

“This unique and thought provoking community art project has been a long standing tradition for Wagstaffe,” said association president Ms Peta Colebatch.

The theme of the 2018 event is Light.

“The challenge will be to create a piece or work that features light as a theme in some way.

“It could be in the title or incorporated into the work or medium in some way,” Ms Colebatch said.

Locals should visit the Wagstaffe Hall on Friday, August 10, between

5pm and 7pm to pay the \$12 entry fee (cash only).

As part of their entry fee aspiring artists will be given a canvas.

Children can also enter and will also get a canvas upon paying their \$6 entry fee.

“Final products must be delivered to the Wagstaffe Hall on Friday, September 28, between 5pm and 7pm,” Ms Colebatch said.

All works will be hung or displayed in the exhibition and some will be available for purchase.

There will be two people’s choice awards, one for adults and juniors.

The exhibition will take place over September 29 to 30.

SOURCE:
Newsletter, 26 Jul 2018
Peta Colebatch, WTKCA

Spike Milligan exhibition opens at library

Central Coast Council is encouraging residents to visit Woy Woy Libraries new Spike Milligan Exhibition.

“The new Spike Milligan Exhibition at Woy Woy Library officially opened last month.

“The museum-quality exhibition holds a culturally significant collection of photographs, recordings, video and diaries offering an informative and interactive tribute to the beloved

entertainer, his family and the Woy Woy region,” said Council director Ms Julie Vaughan.

The works were made possible thanks to a \$188,429 Library Council of NSW Public Library Infrastructure Grant, which also provided the opportunity to improve safety, visibility and create more active and flexible learning space for the community.

SOURCE:
Media release, 19 Jul 2018
Gary Murphy, Central Coast Council

5th AUG

10AM-2PM

COMMUNITY

Day

Free barefoot bowls and face painter for the kids!

BBQ on the greens!

Gold coin donation to raise funds for Gosford SES

Make sure you visit the SES Display staffed by NSW SES volunteers from Gosford Unit

We'll have activities and hand-outs to help you and your family better understand and prepare for emergencies such as storms and floods.

CLUB UMINA

Just gets better

MEMBERSHIP

AT CLUB UMINA

BECOME A PART OF THE CLUB UMINA FAMILY AND JOIN UP AS A MEMBER!

TAKE ADVANTAGE OF THE MANY BENEFITS WE HAVE TO OFFER OUR MEMBERS WHICH INCLUDE:

50% MEMBER DISCOUNTS ON PURCHASES WHEN PAYING WITH CLUB POINTS

EARN 1 POINT FOR EVERY \$1 SPENT

MEMBER PROMOTIONS INCLUDING MEMBER SWIPE PROMOTIONS & MEMBERS DRAWS

DISCOUNTS IN THE CLUB

\$4

1 YEAR SENIOR MEMBERSHIP

\$5

1 YEAR MEMBERSHIP

\$11

5 YEAR MEMBERSHIP

TERMS AND CONDITIONS APPLY.

CLUB UMINA

Just gets better

Sunday

RAFFLE

MEAT, BEER, AND VOUCHER RAFFLE

TICKETS ON SALE FROM 12:30PM

DRAWN 2PM

Melbourne Avenue - Umina Beach, New South Wales

www.clubumina.com.au - 4343 9999

CLUB UMINA

Just gets better

Grandma Moses Art Competition and Exhibition

More than \$3,000 on offer in prize money

Entrants must be aged 50 or over.

Entries close: Friday 24 August

Exhibition of all entries: 11-13 September 2018

Gosford 50+ Leisure and Learning Centre, 217 Albany St North, Gosford.

'Trevor' by Chris Ireland

Winner, Section 1 Open, Grandma Moses Art Competition 2017.

Central Coast Council

Details: centralcoast.nsw.gov.au/seniors or call 4325 8222.

Author talks about beach safety children's book

The author of Surf Life Saving Australia's newest children's book has given a talk about the book at Ocean Beach Surf Club on Sunday, July 29.

Ocean Beach life saver Ms Louise Lambeth said her new book, *Annie and the Waves*, was the culmination of five years of work.

Annie and the Waves was inspired by her work with Surf Life Saving NSW's Beach to Bush Program, which sends life savers to rural areas to educate families, communities and children about beach safety.

"At least 50 per cent of people rescued by surf lifesavers live more than 50km away from the coast and sadly more than 50 per cent of people who drown live more than 50km from the coast," Ms Lambeth said.

"Beach to Bush aims to educate young people and their families in rural areas about safety at the beach and other aquatic environments.

"The program is a one hour interactive surf safety presentation delivered to school children by experienced and enthusiastic surf lifesavers.

"My family and I have completed four tours with the SLSNSW Beach to Bush Program from 2012 to 2015.



Ms Louise Lambeth with children on a Beach to Bush tour

"We have toured many areas including Parkes, Forbes, Armidale, Inverell and Merriwa.

"The smallest school had four pupils and the largest around 700," she said.

Ms Lambeth's book tells the story of a little girl named Annie as she and her family go on a seaside holiday for a week.

During the visit Annie

discovers just how unpredictable the ocean can be.

Creating a surf education resource from a child's perspective was something Ms Lambeth has wanted to do for a long time.

"While there are child-focused surf education resources, there are no children's story books from the perspective of a child.

"My aim for Annie was for her to go to people that may not have access to surf education," Ms Lambeth said.

Ms Lambeth has urged people to get talking about Annie and the important messages about ocean safety she can teach to children.

"I've written the book but that's where it stops," Ms Lambeth

said.

"It doesn't go any further unless somebody buys the book, or gets the book from the library and reads the book, so I think the most important part of this journey now is not with me it's with the parents, caregivers and teachers that will read the book to the children and pass that message on," Ms Lambeth said.

Annie has been a labour of love for Ms Lambeth who will not profit from the sales of the book, instead passing the proceeds onto Surf Life Saving Australia.

"Annie is now in colour illustration and almost ready for typesetting and printing," Ms Lambeth said.

"The Peninsula community has played a large part in helping to get 'Annie and the Waves' to illustration and now to the publication stage.

"This support has included attending or donating to fund raising events to pay for the illustrations, test reading the book, project management advice and most importantly by encouraging and not letting me give up when the tasks to publish became overwhelming," Ms Lambeth said.

SOURCE:

Interview, 25 Jul 2018
Louise Lambeth, Ocean Beach SLSC
Reporter, Dillon Luke

We're Back!



OCEANBEACH
HOTEL

Cnr Trafalgar & West st
Umina

Email: oceanbeachhotel@alhgroup.com.au
www.obhotel.com.au

BORN JOVI



SATURDAY 25TH AUG
FREE ENTRY - MAIN ACT 9PM

Directory - Not for profit Community Organisations

Art & Culture

Central Coast Art Society

Weekly paint-outs
Tues 0428 439 180.
Workshops 9.30am 1st & 3rd
Wed Gosford City Art Centre
4363 1156.
Social Meetings 1.30pm 4th
Wed for demonstrations
4325 1420
publicity@artcentralcoast.asn.au

Central Coast Handweavers, Spinners and Textile Arts Guild

Spinning and weaving,
patchwork and quilting,
felting and other fibre and
fabric crafts, community
quilting bees
Day and Night Groups
4325 4743
www.cottagecrafts.net.au

Ettalong Beach Art & Crafts Centre

Adult classes in Pottery
Watercolours, Oils, Acrylics,
Pastels, Silvercraft,
Patchwork & Quilting
0412 155 391
www.ebacc.com.au
ebacc_email@gmail.com

Hospital Art Australia Inc.

Meet every Tue and Fri
9am-2pm - 109 Birdwood
Ave, Umina - Painting and
Canvas drawing. Volunteers
welcome
hospitalartaustalia.com.au
0431 363 347

Community Centres

Peninsula Community Centre

Cnr Ocean Beach Rd &
McMasters Rd Woy Woy
Activities, programs and
support groups for children,
teens, adults and seniors
including occasional care,
playgroups, dance classes,
karate, fitness classes, youth
services, gambling solutions,
internet kiosk and social
groups.
www.coastcommunityconnections.com.au
4341 9333

Ettalong 50+ Leisure & Learning Centre

Mon - Fri - Cards, Computer
Lessons, Dancing, Indoor
Bowls, Fitness, Handicrafts,
Leatherwork, Line Dancing,
Painting, Scrabble, Table
Tennis, Tai Chi, Yoga, Darts
4304 7222

Central Coast Community Legal Centre

Not for profit service
providing free legal advice.
Monday to Friday
9am to 5pm
4353 4988
centralcoast@clc.net.au

Point Clare Community Hall

Community Garden -
Playgroup
Craft and Exercise Groups
Function or Meeting Hire
Managed by Gosford
Regional Community
Services
Enquiries regarding hire to
4323 7483
accounts@gosfordcommunity.org.au
www.gosfordcommunity.org.au

Community Groups

ABC "The Friends"

Support group for Public
Broadcaster.
Aims: Safeguard ABC's
independence, adequate
funding, high standards.
Meetings through the year +
social afternoons
Well-known guest speakers
4341 5170
www.fabcnsw.org.au

Central Coast Caravanners Inc

3rd Sun Monthly
Visitors - New Members
welcome, Trips Away, Social
Outings, friendship with like
minded senior folk - Details
from Geoff
0447 882 150

Central Coast 50+ Singles Social Group

Ladies & gents dinner,
dancing - BBQs & socialising
each w/ed.
Monthly programme for all
areas
0412 200 571
0437 699 366
50psgg@gmail.com

CCLC Indoor Bowls

Mon - Ladies Social
Wed Night - Mixed Social
Sat - Mixed Social
New members welcome -
tuition given
level 2 Central Coast
Leagues Club
4334 3800

Freemasons

Who are they?
What do they do?
Find out about the world's
oldest fraternal organisation
and how we help our
community.
Gosford Masonic Centre
86 Mann St Gosford
www.tcd2001.org

Peninsula Village Playgroup

Carers, Grandparents,
parents & children
'Intergenerational Playgroup'
Tues 10-11.30am
4344 9199

Peninsula School for Seniors

Community Centre,
McMasters Road, Woy Woy
Discussions, rumikin, craft,
history, walks, & coach trips
Tues, Wed, Thur
4341 5984 or 4341 0800

The Krait Club

Community Centre - Cooinda
Village, Neptune St, Umina
10.30am For seniors. Gentle
exercises, quizzes, games,
social activities, guest
speakers, entertainment and
bus trips - 4344 3277

The NSW Justices Association Inc

Seeking volunteers for
added community desks
Wednesday Umina Library
10am-1pm
Thursday Woy Woy Library
10am-1pm
Free Insurance and training
provided
0418 203 671
marketing@nswja.org

Umina Beach Men's Shed

Men share a variety of tools,
pursue interests and hobbies,
spend time with other men
and learn new skills
Darrell 4342 9606

Volunteering Central Coast

Refers potential volunteers
to community orgs. Supports
both volunteers and
community orgs. Training for
volunteers & their managers.
4329 7122
recruit@volcc.org.au

Wagstaffe to Killcare Community

Protect and preserve the
environment & residential
nature of the Bouddi
Peninsula and to strengthen
community bonds
2nd Mon, 7.30pm
Wagstaffe Hall 4360 2945
info@wagstaffetokillcare.org.au

Entertainment

Frantastics Choir Inc

High quality variety
entertainment available for
matinee
bookings at your venue.
New members welcome.
1pm Mondays during school
terms
Walter Baker Hall, Woy Woy
4343 1995
www.frantastics.org

Health Groups

Al-Anon

If someone's drinking is
causing you problems...
Al-Anon can help
4344 6939
1300 252 666
Meetings Sat 2pm
Woy Woy Hospital
Ocean Beach Road

Arthritis NSW

Woy Woy support group
Woy Woy Bowling Club
North Burge Road Woy Woy
3rd Tues 10.30am
1800 011 041

Better Hearing Australia - Central Coast

Hearing loss management
Support and educational
groups providing practical
experience and confidence
Learn the benefits of hearing
aids
4321 0275

BlueWave Living

Woy Woy Community
Aged Care facility providing
residential aged care to the
frail aged.
Permanent and respite care
accommodation available.
Information 2nd and 4th Tues
- 11am
4344 2599
reception@blueweliving.org.au

Central Coast Parkinson's Support Group

We aim to help individuals
and their families better
manage living with
Parkinson's Disease
Guest speakers are a regular
feature of our meetings.
2nd Tue - 1.30pm
1800 644 189

Gambling Solutions

Gambling help counsellors
providing free confidential
professional service to
gamblers, family and friends.
Woy Woy, Kincumber,
Gosford and The Entrance
4344 7992

GROW Support Groups

Small friendly groups formed
to learn how to overcome
anxiety, depression and
loneliness and to improve
mental health and well-being.
Anonymous, free and open
to all. Bring a support person
if you like. Weekly meetings
at Woy Woy, Bateau Bay and
Wyong
1800 558 268
www.grow.org.au

Meals on Wheels

Delicious meals delivered
free
Join us for a midday meal
Help with shopping and
cooking classes
4341 6699

Mary Mac's Place

Providing hot, freshly cooked
meals - Mon to Fri 11am-1pm
with support, info & referrals
4341 0584
marymacs@woywoycatholic.org.au

Overeaters Anonymous (OA)

12-step fellowship for those
with eating disorders. No
dues, fees, or weigh-ins.
Peninsula Com. Cntr, cnr. Mc
Masters Rd & Ocean Beach
Rd. Woy Woy, Fri 8pm
0412 756 446
www.oa.org

Peninsula Village Wellness Centre

Offering holistic and
complementary therapies
including aromatherapy,
massage and music therapy
4344 9199

Peninsula Village Meals

Delivered daily to your door
Nutritious, great for the
elderly
4344 9199

Peninsula Village Carer's Support Group

For carers of loved ones with
dementia - 1st Wed - 10 to
11.30am
Paula 4344 9199

Prostate Cancer Support Group (Gosford)

Last Fri, Terrigal Uniting
Church, 380 Terrigal Drive,
Terrigal
9.30am to 12 noon 4367
9600
www.pcfa.org.au

Schizophrenia and Bipolar Fellowship

For Schizophrenia/Bipolar/
Mental Health sufferers,
family, carers and friends. .
1st Thur - 1pm Room 3
Uniting Church Donnison St
Gosford
4344 7989 or 4368 2214

Woy Woy Stroke Recovery Club

Everglades Country Club
2nd Tues 11am

Company, up-to-date info,
hydrotherapy, bus trips
4341 7177

Music

Brisbane Water Brass

Brass Band entertainment
for the community playing all
types of popular music.
Rehearsal every Tues
7.30pm-10pm
0419 274 012

Coastal a Cappella

Vibrant women's a cappella
chorus. New members
welcome - music education
provided. Rehearsals.
Tues 7pm Gosford Tafe
Performance opportunities
Hire us for your event
0412 948 450
coastalacappella@gmail.com

SOUNDWAVES

A cappella harmony for
Men - new members
welcome. Rehearsals
Mondays 7.00pm
to 9.30pm Central
Coast Leagues Club,
Dane Drive, Gosford
Ring Max on 4324 3631
or Kieran 4324 1977

Troubadour

Central Coast Folk,
Traditional & Acoustic
Music and Spoken Word
Concerts, Ukulele meets,
and Sessions
4th Sat 7pm CWA Hall Woy
Woy 4342 6716
mail.info@troubadour.org.au

Political Groups

Australian Labor Party

Political discussions,
national, state and local
government issues

Umina Ettalong Branch

2nd Mon Umina Beach
Bowling Club 7.30pm 4342
3676

Ourimbah/ Narara Branch

Niagara Park Primary School
7.30pm 1st Mon
0410 309 494
kyle.macgregor@hotmail.com

Woy Woy Branch

Everglades Country Club
7.30pm 2nd Mon
Peninsula Day Branch
1pm 2nd Mon
CWA Hall Woy Woy
4341 9946

Central Coast Greens

Active regarding ecological
sustainability, social &
economic justice, peace &
non-violence, grassroots
democracy & getting
Greens elected
3rd Thur,
centralcoast.nsw.greens.org.au
centralcoastgreens@gmail.com

Service Groups

Lions Club of Woy Woy

1st and 3rd Mon. Woy Woy
Leagues Club
0478 959 895
Make new friends and
have fun while serving your
community.

Rotary Clubs

International service
club improves lives of
communities in Aust. & o/
seas. Fun-filled activities,
fellowship and friendship.

Rotary Club of Kariong

Phillip House, 21 Old Mount
Penang Rd, Fri 7.15am
4340 4529
kersuebay@philliphouse.com.au

Rotary Club of Umina Beach

Wednesdays 6.30pm
Everglades Country Club
0409 245 861
curleys@ozemail.com.au
0409 245 861

Rotary Club of Woy Woy

Tues 6pm Everglades
Country Club.
Don Tee 0428 438 535

Special Interest

Bridge

Duplicate Bridge Mon Tue
Thur Fri Sat-12.15pm
& Wed 9.15am
Brisbane Water Bridge Club,
Peninsula Community Centre
93 McMasters Rd.
Woy Woy
www.brisbane-water.bridge-club.org

Cash Housie

50 Games every Sat night
Peninsula Community
Centre, McMasters Rd, Woy
Woy,t 7.30pm. Proceeds to
Woy Woy Catholic Parish.
www.cashousie@hotmail.com

Central Coast Family History Society Inc.

Resources, information
& advice to study your
family's history.
1st Sat 1pm Lions
Community Hall, 8 Russell
Drysdale St, E. Gosford.
www.centralcoastfhs.org.au
4324 5164

Central Coast Tenants' Advice and Advocacy Service

Help with issues with
landlords & real estate
agents? Free telephone
advice and advocacy for
all tenants and residents in
residential parks.
4353 5515
cctaas@hotmail.com

Central Coast Rescue Unit

Marine Education Courses.
Radio Licenses, Boat
Safety & Boat License
& PWC License Tests,
Navigation, Seamanship and
Meteorology.
4325 7929
www.vmrcc.org.au

Central Coast Soaring Club Inc

Gliding Club, Learn to
fly, Instruction FREE to
members
Come and have an Air
Experience Flight
All Welcome
14 and up for Training
Flying at Bloodtree Road
Mangrove Mountain Thur,
Sat, Sun (weather permitting)
0412 164 082
0414 635 047
www.ccssoaring.com.au

Ettalong Toastmasters

We provide a supportive and
positive learning experience
in which members are
empowered to develop
communication and
leadership skills, resulting in
greater
self-confidence and

personal growth
2nd & 4th Tue, 7:30PM,
Ettalong Diggers
0408 416 356

Peninsula

Environment Group

Environmental projects,
(incl. Woytopia),
Woy Woy community
garden, social events,
workshops, organic food
buying group
www.peg.org.au

Central Coast

Goju-Kai Karate

Traditional Karate & Self
Defence for Teens & Adults
No Contracts, Cheap Rates
Wamberal - Mon 630pm
Kincumber - Thurs 715pm
0417 697 096
www.centralcoastgoju-
kaikarate.com.au

Woy Woy Judo Club

Mon & Fri -Beginners
From 4:30pm
Tue & Thur - graded classes
4:30pm - 8:30pm
27 Bowden Road Woy Woy
Min Age 3 years old
0434 000 170
www.woywoyjudoclub.com

Veterans

National Malaya Borneo Veterans Association

1st Sat (except Jan) 10.30am
Umina Club
Melbourne Avenue
Umina Beach
4342 1107

Veterans' Help Centre'

Assist all veterans &
families with pension &
welfare issues.
Mon & Wed 9am-1pm
4344 4760 Cnr Broken Bay
Rd & Beach St Ettalong.
centralcoastveterans@bigpond.com.

Woy Woy Ettalong Hardy's Bay RSL

Provide help with pensions
and welfare etc.
Shop 5/382 Oceanview Rd
Ettalong. Tues & Thurs 9am
to 1pm 4341 2594

Women's Groups

Country Women's Association Umina

2 Sydney Ave
Branch Meetings
2nd Wednesday 10am
Craft & Friends
Wednesdays 9.30am
2nd and 4th Sundays
12.15pm
0416 193 070 - 4340 1746

Country Women's Association Woy Woy

30 The Boulevard, Woy
Woy
Craft & Friendship: 1st, 2nd
and 3rd Wed 10AM.
Meetings: 4th Wed 10AM.
Ph: 0411 434 785
woywoycwa@gmail.com

Peninsula Women's Health Centre

Counselling, therapeutic and
social groups, workshops,
domestic violence and
abuse issues. All services by
women for women
4342 5905
www.cccwhc.com.au

NEWSPAPERS
Central Coast

If you would like your Community Organisation listed here

see www.duckscrossing.org or www.centralcoastnewspapers.com for the forms or contact Central Coast Newspapers on - 4325 7369

Entries in the Not For Profit Community Organisations Directory are free. However, we require each organisation to subscribe to each newspaper to ensure that someone from that organisation keeps their entry up to date. Subscription rates are \$75 for 25 editions.

Bowler receives long-service award

Woy Woy Bowling Club member Ms Miriam Cotton has been honoured with a long-service award.

Ms Cotton received the award for 20 years of service to Woy Woy Bowling Club.

During her time as a member, Ms Cotton has served on the executive Committee and has also been an avid bowler, said club

publicity officer Mr Ken Dixon.

"Miriam is a well-known local in the community and continues to assist with Club activities," he said.

"Her 20-year badge from the NSW Women's Bowling Association was presented by her club president, Ms Dianne Elsom."

SOURCE:

Media release, 17 Jul 2018
Ken Dixon, Woy Woy Bowling Club



Ettalong's awesome foursome, Penny McLeod, Leanne Chenoweth, Judy King and Margaret Smith

Local clubs in winners' circle

Ettalong Memorial Women's Bowling Club recently hosted the 2018 Region Six Championships against the Lake Macquarie District.

Central Coast district clubs won five of the seven disciplines, with Ettalong and Umina Beach Women's Bowling Clubs among the winners' circle.

"The Open Fours event went to Ettalong's Penny McLeod, Leanne Chenoweth, Judy King and Margaret Smith," said Ettalong club communications officer Ms Maureen Kerr.

The Senior Pairs event was

taken out by Umina's Pat Neal and Lesley Swales.

The winners will now go on to play at the NSW Playoffs to be held at Taren Point Bowling Club in September.

"This is a knockout event and we wish all our Region 6 winners good bowling," Ms Kerr said.

SOURCE:

Media release, 21 Jul 2018
Maureen Kerr, Ettalong Memorial Women's Bowling Club

The Peninsula Diary of Events

For events in post code areas 2256 and 2257

Thursday, Aug 2

Monster Meat Raffle, The Bayview Hotel Woy Woy, begins 6pm

Friday, Aug 3

Mad About Hair, Crazy Hair Kids Disco, Everglades Country Club, 6:00pm to 8:00pm

Saturday, Aug 4

SNSW Target Squad Meeting, Peninsula Leisure Centre Woy Woy, 9:00am, continues on Sunday, August 5

Neil Diamond Hot August Night The Concert, Ettalong Diggers, 8:00pm to 11:00pm

Stratford Music Open Day, Stratford Music Woy Woy, 1:00pm to 4:00pm, booking essential

Motherhood Live, The Old Pub Woy Woy, 8:00pm to 11:00pm

Wednesday, Aug 8

Plan Your End of Life and Live Better, Jasmine Greens Kiosk, 6:30pm to 8:00pm, tickets essential

Thursday, Aug 9

Radio Five-O-Plus, Deepwater Plaza Shopping Centre Woy Woy, 9:30am to 1:30pm

Friday, Aug 10

Circus Workshop and Kids Disco, Everglades Country Club, 6:00pm to 8:00pm

Saturday, Aug 11

Gyrate, The Bayview Hotel Woy Woy, 8:30pm to 12:00am

Trivia & Karaoke Night, Woy Woy Leagues Club, 6:30pm to 11:00pm

Thursday, Aug 16

Ettalong Public School Musical: Around the World in Eighty Waves, Brisbane Water Secondary College Woy Woy Campus, 11:00am to 8:00pm, tickets essential

AJP Central Coast Branch Monthly Meeting, CWA Hall Woy Woy, 6:30pm to 7:30pm

Friday, Aug 17

Trouble in Paradise and The Loose Leeches, The Bayview Hotel, 7:30pm to 12:00am

Art Workshops and Kids Disco, Everglades Country Club, 6:00pm to 8:00pm

Saturday, Aug 18

Smokin' Rosie LIVE, The Bayview Hotel Woy Woy, 8:30pm to 12:00am continues on Sunday August 19

Sunday, Aug 19

Wild Honey Central Coast Ettalong Markets, 189 Ocean View Rd Ettalong, 10:30am to 1:30pm

Healthy Bumps Pregnancy Health Workshop, Umina Surf Life Saving Club, 9:30am to 11:30am, tickets essential

Friday, Aug 24

Pearl Beach Glee Club presents: Around the World in 80 Minutes Concert, Pearl Beach Memorial Hall, 7:30pm to 9:30pm, tickets essential

If you've got something happening on the Peninsula over the next few weeks, let us know about it and we'll list it here for you, for free. Contact details are on page 2. See the Coast Community News for events in post code areas 2250, 2251 & 2260 and the Wyong Regional Chronicle for events in post code areas 2258, 2259, 2261, 2262 & 2263

THE SHAME FILE

Central Coast Newspapers has a very liberal credit policy for advertisers and realises that from time to time, people, businesses and organisations get into financial difficulty and may need assistance and time to get things back on track. However, some people, businesses and organisations take advantage of this generosity they use advertising but simply don't pay their account after several months and need to be taken to court to do so. From time to time, as necessary, we will name these people, businesses or organisations as a warning to our readers so that they will be wary when dealing with them.

- Affordable Roof Solutions** - Brad Sedgewick Ettalong
- Depp Studios** - Formerly of Umina
- Tony Fitzpatrick** trading as Futurtek Roofing
- Stan Prytz** of ASCO Bre Concreting
- Andrew and Peter Compton**
- Bruce Gilliard Roofing** of Empire Bay
- Jamie McNeilly** formerly of Jamie's Lawn Mowing, Woy Woy
- William McCorriston** of Complete Bathroom

- Renovations**
- First Premier Electrical Service** of Umina Beach
- High Thai-d** Restaurant of Umina Beach
- Mal's Seafood & Charcoal Chicken** of Ettalong Beach
- Simon Jones** - All external cleaning and sealing services
- Erroll Baker**, former barber, Ettalong
- Tye King** - Formerly The Fish Trap Ettalong Beach
- Jessica Davis of Erina** - Trading as A1 cleaning services

- Simon and Samantha Hague**, Trading as By the Bay Takeaway Empire Bay
- Rick Supplie** of Ettalong Beach, Trading as Rick's Flyscreens
- Mountain Mutts** - Monique Leon, Ettalong Beach
- RJ's Diner** - Ryan Tindell of Woy Woy
- Thomas James Clinton**, Trading as TMA Products & AthroBalm & Effective Business Solutions of Ettalong

- Greenultimate Solar PTY LTD**
- Decorative Fabrics & Furnishings** - Steve McGinty, Wyoming
- Menhir Tapas & Bar PTY LTD**
- Dean Lampard** - Trading as Lampard Painting
- Callum McDonald** - Trading as Sunset Decks
- Linda Smith**, Bookkeeper Horsfield Bay
- Robcass Furniture Removals**, Mannering Park
- Emma Knowles** - Blacksmith NSW

Peninsula directory of services, contacts and support groups

Ambulance, Police, Fire 000

Emergency

Ambulance, Police, Fire 000
Police Assistance Line 131 444
Crime Stoppers 1800 333 000
Woy Woy Police Station 4379 7399
Energy Australia 13 13 88
Gas Emergency 131 909
Gosford City Council 4325 8222
Marine Rescue NSW -
Central Coast 4325 7929
SES - Storm and Flood Emergency 132 500
Aboriginal & Torres Strait Islander Organisations

Mingaletta 4342 7515
Aboriginal Home Care 4321 7215
Drug & Alcohol rehab 4388 6360

Accommodation

Dept. of Housing Gosford 4323 5211
Cassie4Youth 4322 3197
Coast Shelter 4325 3540
Pacific Link Com Housing 4324 7617
Rumbalara Youth Refuge 4325 7555
Samaritans Youth Services 4351 1922
Youth Angle • Woy Woy 4341 8830
Woy Woy Youth Cottage 4341 9027
Animal Rescue

Wildlife Arc 4325 0666
Wires 1300 094 737

Community Centres

Peninsula Community Centre 4341 9333
Men's Shed Cluster Inc 0413 244 484
Counselling

Centacare: 4324 6403
Relationship Australia: 1300 364 277
Interrelate: 1800 449 118

Family and Relationships

Centacare Gosford 4324 6403
Central Coast Family Support Service 4340 1099
Horizons (For men with children) 4351 5008
Uniting Care Burnside
Gosford 1800 067 967

Health

Poisons Information 131 126
Ambulance Text Mobile 106
Ambulance GSM 112
Gosford Hospital 4320 2111
Woy Woy Hospital 4344 8444
Sexual Health @ Gosford Hospital 4320 2114
After Hours GP Help Line 1800 022 222
Legal & Financial Help

Financial Counselling Service 4334 2304
Tenants' Advice and Advocacy Service 4353 5515
Woy Woy Court 4344 0111

Libraries

Gosford district:
Umina Beach 4304 7333
Woy Woy 4304 7555

Problems, Habits & Addiction

Alcoholics Anonymous 4323 3890
Narcotics Anonymous 4325 0524

Professional support phone services:

Mental Health Line 1800 011 511
Beyondblue 1300 224 636
Domestic Violence Line 1800 656 463
Lifeline 13 11 14

Kids Help Line 1800 551 800
Griefline 1300 845 745

Suicide Call Back Service
1300 659 467

Transport

Taxi 131 008
Busways 4368 2277
City Rail 131 500

Welfare Services

Gosford Family Support 4340 1585
Meals on Wheels 4341 6699
Department of Community Services
Gosford 4336 2400
The Salvation Army 4325 5733
Samaritans Emergency Relief 4393 2450
St Vincent De Paul Society
HELPLINE 4323 6081

Classifieds

ANTENNAS

A Better Picture
Antenna & Digital Installations & Tuning
New home specialist
Credit cards OK
HAYWARD VIDEO
All areas
Gosford 4323 6367
Woy Woy 4344 4414
Warnervale 1800 244 456
0412 685 555

BRICKLAYING

Bricklayer
Over 40 year's experience
Small jobs welcome
All aspects of brickwork
Free quotes
Ph: Will 0481 331 945

CABINETMAKER

CABINETMAKER
• Cupboards
• Shelving
• Furniture
• Kitchen Updates and Robes
Call Jens
0418 993 994

ELECTRICIANS

BKW
Electrical Services
Lic No:248126C
Lights - Fans -
Power - Reno's
Switchboards -
Security lights
No job too small
Call Ben on
0404 093 299

FENCING

BLUEPRINT FENCING
All types of
fencing, gates and
retaining walls
Call Luke
Free quotes
0401 347 247

PLUMBING

YOUR LOCAL PLUMBER
Same day service
Guaranteed
Blocked drains, Leaking taps and toilets, Hot water and all aspects Of pluming drainage and gas fitting.
Lic number 265652C
4346 4057

ASBESTOS REMOVAL

Asbestos Removal
Fully licensed and insured asbestos removals from houses, garages, sheds, bathrooms etc.
Ph: Tom 0422 653 794
or 4393 9890
Safe Work NSW Lic. AD212564

BUILDER

WALK THE LINE CONSTRUCTIONS
Builder - Carpenter
Cabinetmaker
specialising in
decks, pergolas
& renovations
Call Ben 0405 838 489
ben@walkthelineconstructions.com.au
Lic 266808C

CARPENTERS


Carpentry - Building
over 30 years experience
Local know how - working with pride and honesty
Paul Skinner
Lic 62898c
0432 216 020
or 4339 2317

YOUR LOCAL ELECTRICIAN

Same day service
Guaranteed
Lighting, Power Points,
Phone & Data,
Fault Finding,
No job too small.
Seniors Discount.
Lic number 265652C

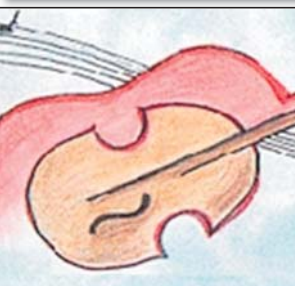
4308 6771

TSB ELECTRICAL & DATA



Electrical & Data
TIM BULLOCK
ALL ELECTRICAL AND DATA
RESIDENTIAL AND COMMERCIAL
0427707080
Lic: 236223C

ENTERTAINMENT



The Troubadour
Folk and Acoustic
Music Club
AUG 25
at 7pm
JIM JARVIS
CWA Hall - Woy Woy
Price \$10,
\$13 and \$15
www.troubadour.org.au
4342 6716

BluesAngels
Your total acoustic blues/roots package, top to toe, and then some. Minnie the Moocher to Eagle Rock and on into indie roots, beatnik jazz, backhills bluegrass and prog folk. Available as duo, trio or band negotiable for your party, event or venue.
tomflood@hotmail.com
4787 5689

GARDENING

AAA. A ADEPT GARDENER
• ALL REGULAR GARDEN & LANDSCAPE MAINTENANCE
• HEDGE TRIMMING & HEIGHT REDUCTIONS
• TREE PRUNING, FORMATIVE & SPECIALIST PRUNING
• GARDEN CLEAN-UPS, MAKEOVERS & RESTORATIONST
• MULCHING, FERTILISING & WEED CONTROL
• CHAINSAW WORK
• SMALL TREE REMOVALS & CHIPPING SERVICE
• STUMP GRINDING- LOW IMPACT & DIFFICULT ACCESS
• CLEAN, POLITE, PUNCTUAL & EFFICIENT SERVICE
• HIGH LEVEL OF EXPERIENCE
FULLY INSURED
CALL ANDREW : 0449 170 008

MASSAGE

Calming Souls

Massage
Remedial Massage Therapist
Infant Massage Instructor
Paediatric Massage Consultant
Call Kate
0423 150 561
calmingsoulsmassage@gmail.com

PAINTERS

BUCELLO'S
Painting Services
• Residential and Commercial
• Interior and Exterior
• New Work and Repaints
Free Quotes
All work guaranteed
0410 404 664
wattyl®

PLASTERING

PHIL BOURKE PLASTERING
Over 36 yrs exp
Gyprock, Renovations
Small Jobs, Free Quotes
Reliable Service
0418 452 474
Licence No 2107c

ADVERTISE YOUR BUSINESS
HERE FROM ONLY \$20 A WEEK +GST
4325 7369

DEEPWATER

 **Plumbing & Gas Solutions**
Gas installations
Hot Water Systems
Appliances
Portable Heater
Servicing
Drainage and all aspects of plumbing
Senior's discount
Call Brent 0422 080 936
Lic 286937c

ROSS PLUMBING CO.

Servicing all areas of the Central Coast
• Hot & Cold Water
• Sewer & Storm Water Drainage
• Roofing & Guttering
• Complete Bathroom Renovations
0403 101 262
Lic 193366e

PLUMBER

No call out fee
No job too small
40 year's experience
Fully insured
Lic. L11565
Ph: 0416 875 598

UMINA BEACH PLUMBING

All aspects of Plumbing, Drainage & Gasfitting
Domestic & Maintenance Works
Hot Water Installation & Repairs
☎ **4344 3611**
0412 132 729
Lic no 25650C

REMOVALS

KEVIN'S REMOVALS & DELIVERIES
Deliveries & Removals, Local Sydney, Newcastle & Country. Single items or a house full. Competitive rates.
02 4342 1479
0411 049 559


Classifieds advertising rates - in print and on-line

Classified advertising is the cheapest form of newspaper advertising. This newspaper is published on line on the night before publication date, and is read that way by hundreds of people. All advertisements, including these classified advertising pages, appear in full on-line as an additional benefit for free.

See www.CentralCoastNewspapers.com or www.CentralCoastNews.net

Central Coast Newspapers' advertising rates are relatively much lower than in other newspapers and at the same time much larger than in other newspapers, with the minimum size being 50mm X 42mm. Approximately 16,000 copies of each newspaper are printed and distributed every fortnight.

Personal and Not For Profit Organisations

As Central Coast Newspapers are community newspapers, the cost of advertising not for profit organisations' events is subsidised. This makes them the same rate as non business advertisements.

A mono 5cm advertisement only costs \$33. Each additional cm costs \$6.60 as does colour, and/or a photograph or a logo. Private advertisements need to be paid for at the time of booking.

Business rates

The minimum size of 5cm X a single column only costs \$40 + GST in mono and an extra \$8 + GST for colour, a logo or a photograph, every two weeks. Most businesses choose to advertise on an ongoing basis and discounts apply for multiple bookings, if they are paid for in full, in advance.

Having an advertisement run for 3 months only costs \$215 + GST, for 6 months it is \$385 + GST, and for 12 months advertising, the total cost is only \$700 + GST – Approximately \$14 per week.

Artwork is free and advertisers are encouraged to change their advertisements frequently

MGL CARPENTRY

Carpenter & Joiner
40yrs Experience
Decks, Pergolas, Doors, Windows etc
Fully Insured - Call Gary
0458 130 829
4341 1346
no labour & materials over \$1000

CLEANING

Weston & Wilson Cleaning Services
Domestic, end of lease, holiday & vacate cleans.
Regular or one off.
Fully insured, WWC & Police check avail.
From \$35 hour.
Maryanne
0403 505 812

 **Greenway Master Cleaning Services**
Korean cleaner with over 10 year's experience.
Domestic, holiday lets, or spring cleaning.
Can be ongoing or one-off
References available.
Ph: Cathy Kim 0452 515 477
E: Muse4Violin@Gmail.com



Junior clubs travel to Cardiff

Local junior rugby league clubs travelled to Cardiff on July 22 to take part in the Cardiff Cougars Junior Rugby League Gala Day.

Umina Bunnies Junior Rugby League Football Club were well represented by their Under 6's and Under 7's players as were the Woy Woy Roosters Juniors.

The Bunnies appeared in seven games.

The Roosters took to the field during four games.

Umina Bunnies Junior Club president Mr Ken Dyer said it was an excellent day of junior rugby and that the Bunnies had a great day out.

SOURCE:
Social media, Jul 23
Ken Dyer, Umina Bunnies Juniors

REMOVALS

Allways Moving Removals

House, office units
No job too big or too small
Affordable rates
Call for free quote
0497 800 074
0421 084 650

TILING



Tiling Wall & Floor Property Maintenance
0439 589 426
homes2nv@gmail.com

TREE SERVICES

Eyecare

Tree and Stump Grinding Services
Mulching Available
Fully Insured
Call Jamie
0413 088 128
www.eyecarelawnmowing.com.au

POSITIONS VACANT

Experienced TILERS WANTED!

Start Immediately
0439 589 426

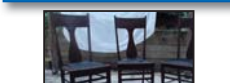
WANTED

CASH PAID

for good quality Swords, Knives and War memorabilia.
For large collections home visit available

Shop 12 - Ebbtide Mall - 155 The Entrance Rd - The Entrance - 4333 8555

RUN IT 'TIL YOU SELL IT



ANTIQUE colonial dining chairs set of 3 \$270
Ph: 0410 522 070
BUC4302



ANTIQUE colonial dining chairs 2 individual chairs \$150 each
Ph: 0410 522 070
BUC4303



PAIR of column speakers 116cm tall X 33cms wide four speakers in each column \$190 for the pair.
Ph: 0410 522 070
BUC4304



POOL CARTRIDGE filter holder Titan CL 160 \$90
Ph: 0410 522 070
BUC4305

1987 GSXR 750CC - Motor Cycle, Excellent Condition,

Rego, No Problems, Many Spares & New Parts \$5000
Ph: 0421 011 622
LMC4306

2008 SUZUKI BOULEVARDE - 800cc Motor Bike, Rego, New white wall tyres, Many extras, 18,000ks \$6,500
Ph: 0421 011 622
LMC4310

2005 REGENT LIFESTYLE CARAVAN 1 Owner, Island Queen Bed, Reg Sept 18, Well Presented - \$19,000
Ph: 0403 520 278
GCH447

1100 LP RECORDS - Some never played, no orchestral - Want to sell the lot in on

go for the best offer
Ph: 4384 3862
GHI137



2004 HONDA CIVIC - GLI, Sedan, Auto, Maroon, New Tyres, 49,000km, as new \$8,000
Ph: 0419 144 094



2009 TOYOTA LANDCRUISER 200 series GXL Petrol, Silver, Auto, 19,500km as new, Clearview towing

mirrors, Tow Bar, New Tyres, Reg til Oct 2018 \$55,000
Ph: 0419 144 094
IPA140

BEALE PIANOLA STOOL AND ROLLS, has just been restored, very easy to play, can help with some cartage.
\$1,800
Ph: 0438 244 803
MRY18AA

MARLIN TWIN HULL BOAT, 5.5m 2 x 90hp yamaha motors, all safety gear, trailer, all in A1 condition.
\$32,000
Ph: 0438 244 803
MRY18AB

LIGHT OAK MEDIA UNIT,

106cm wide, 62cm high, 50cm deep, holds videos, CDs, Value \$600, will sell for \$290
Ph: 0425 251 991
ON1178



MOBILITY SCOOTER 4 wheel shopper Fold up, Will fit in car, Electric
\$1300 Ph: 4392 8893
Ph: 0429 928 893
2005 HYUNDAI SONATA, Auto, Nov 2018 Rego 302641km
\$3000 Ph: 4390 9692
BUC1852



TWO HOLLOW FIBREGLASS KAYAKS 2.4m Long, 75cm beam, with paddles, \$450 pair
Ph: 43421896
BST1450

4MAGS+TYRES 195/65R14 Came off Hyundai Sonata \$70
Ph: 4390 2646

STAMP COLLECTORS antarctic ships series 2 - 15cents, 55 nimrod, recalled after missprint full sheet x 100 \$200 Ph: 4390 2616
DDA450

TWO AND A HALF SEATER Leather couch in good condition red, \$100ono
Ph: 0448 674 214
DSH450

LG TV 50" PLASMA \$150 - Delonghi dehumidifier 20ltr x2 capacity paid \$700 sell \$100 each - DVD Cabinet, Holds 240 \$30
Ph: 4390 9317
LGI145

JAPANESE BANTAMS Wyee \$10 to \$15 each young hens available
Ph: 0423 246 150
FTI145

PIANO/UPRIGHT Excellend condition and sound, for those who can really play \$990
Ph: 0414 445 971
HHA451

HAIR DRESSERS BASH AND CHAIR

perfect for start ups complete with plumbing \$400ono
Ph: 4341 6560

WEST & RED GLASS CEDAR DOOR - one pair double rebate 1500x750x1985 One 832x1985 One 862x1985 \$800ono
Ph: 4341 6560

ELK HORN PLANTS Choice of five, very big, pick up only \$250 each
Ph: 0415 770 378
LSO452

STIHL CHAIN SAW as new \$800
MAKITA RECIPROCAL SAW hardly used \$150 ono
Ph: 0432 204 329
GWH452



GRANDFATHER CLOCK Fully serviced \$600, Guarenteed one year from date of installation by qualified clockmaker
Ph: 0408 417 150
DT1450

SKODA MONTE CARLO, 6800km fully registered and serviced, good power and brakes, excellent cond, alloys and tires, one owner, like new - \$19,300
0434 673 622
BASIN SET, STILL BOXED, 3 piece (2 taps & Spout) \$80
Ph: 0498 116 872
PAG450

ASSORTED ITEMS Downsizing clearance, punch bowl, body board, clocks, microwave, beach umbrellas and more
Ph: 4976 3389
PFL191

21 FOOT WINDWARD TRAILER SAILER 6hp Johnson Motor, Trailer Registered \$6,000 Negotiable
Ph: 4392 7461
RBE192

AVAN ALINER CAMPER excellent condition, one owner, awning, microwave, three way fridge, sleeps three, solar panels, easy to

tow - \$18,000
Ph: 0404 024 045
RBO192

MITSUBISHI OUTLANDER INTERIOR BARRIER New - \$150ono
Ph: 4335 2787
MGE190

SUBARU LIBERTY WAGON B-SPEC 2004 - 6cyl, 6 speed manual, 1 owner, log books, all receipts, 330k km, \$7500
Ph: 0412 467 468

POWERFIT ORIGINAL. Stand on. As seen on TV. New with instructions and remote. \$500
Ph: 4341 4106

DINING ROOM SUITE. ISLANDER 7 PIECE. Excellent as new condition Suitable for outdoor use. Table
6' x 3' Paid \$2700 Bargain at \$1800.
Ph: 4341 4106
LBU193



CARAVAN JURGENS SUNGAZER 16.5 foot as new condition loads of standard feature for free camping and light vehicle, \$5000 extras, long rego, rear view camera, located tumbi umbi - \$32,000ono
Ph: 0415 815 593
ABU450



DISABILITY HAND CONTROLLED 2006 TOYOTA YARIS - 1.5L Auto hatch, reverse sensor one owner 40,000km very good condition, reliable car - \$6,950
Ph: 4332 0254

FOLDAWAY BICYCLE Perfect condition will fit easily into boot of car \$400 Ph: 0449 095 003
WCO192

MOBILITY SCOOTER Very good condition, fold up, will fit in car, electric, \$1250, Ph: 0410039086
WCO192

Run it 'til you sell it*

*To run in all three papers and on line for a maximum of 3 months if not sold before

Client Name: _____

Phone: _____

Email: _____

20 words \$22 ☐

Photo \$5.50 ☐

yes ☐

no ☐

Extra words at \$1.10 per word

Card: _____

Expiry: ____/____/____



TIDE CHART

Actual times of High and Low Water may occur before or after the times indicated

Soccer club holds fundraiser

SOURCE:
Media release, 18 Jul 2018
Kristy Harper, Woy Woy
Football Club

Successful weekend

Media release, 17 Jul 2018
Liam Hewitt, SLS NSW Media



Meals on Wheels
Central Coast

**More
than just
a meal**

*Proudly catering to the
Central Coast community
for almost 50 years.*



**Delicious Meals • Free Delivery
Social Support**



(02) 4357 8444
www.ccmow.com.au

Sponsored by
NEWS ON WHEELS
Central Coast



Australian Government
Bureau of Meteorology

[illegible]

Woy Woy topples Gosford in rugby union

Woy Woy has toppled Gosford in Round 14 of the Central Coast Rugby Union competition.

"This match was a try fest to say the least," said Central Coast Rugby Union publicity officer, Mr Larry Thomson.

"Attack seemed to be the key to the day while the defence from both teams seemed to be a secondary factor.

"Gosford went to the halftime break leading by 21 point to 14.

"Gosford deserved their lead through some very good rugby.

"However, Woy Woy took the lead early in the second half when they crossed for two very quick tries.

"They had jumped to the lead by 26 points to 21.

"At that stage, it seemed the home side would go on with it and secure a comfortable victory, but it was not to be," Mr Thomson said.

"Gosford got back into the match and pushed the home side right through to full time. It was a tight struggle throughout, but Woy Woy were able to outlast the visitors on the scoreboard," he said.

Best players for Woy Woy were Dante Otto, Wes Black and Alifeleti Atiola, who led Woy Woy's excellent attacking team.

"Woy Woy will have to work on their defence over the next few weeks as they allowed Gosford to score too readily during the match," Mr Thomson said.

The win sees Woy Woy hold on to third spot on the competition ladder but, with teams just out of the top four, they cannot afford to relax in the coming weeks, he said.

SOURCE:

Media release, 21 Jul 2018
Larry Thomson, Central Coast Rugby Union

**Help Ted Noffs
Foundation
get addicted
children clean**

HELP

Please donate to buy beds for Ted. Call 1800 151 045 or visit www.noffs.org.au

tednoffs
FOUNDATION



Kaylah Holmes



Lachlan Braddish



Blake Hessel



Jemma Smith and Rachel Wood

Five selected for pool rescue team

Five members of Umina Surf Life Saving Club have been named to the 2018 Interstate Pool Rescue Team who will travel to South Australia this August for the annual representative competition.

Umina will be well represented with five athletes – Jemma Smith, Rachel Wood, Kayla Holmes, Lachlan Braddish and Blake Hessel – who won nearly 60 medals between them at the NSW Titles.

The 22-strong team was selected off the back of the State Championships which were held at the Peninsula Leisure Centre from July 14-15.

"Ultimately, a team was chosen that blends a mixture of youth and experience with the athletes rewarded for strong performances over a period of time," said SLS NSW surf sports officer Ms Chiara Nowland.

SOURCE:

Media release, 20 Jul 2018
Liam Howitt, SLS NSW Media

1 IN 4 AUSTRALIAN WOMEN HAVE EXPERIENCED PHYSICAL OR SEXUAL VIOLENCE*. WE ARE HERE TO HELP.

If you or someone you know is experiencing domestic violence call Coast Shelter for support.

Kara Women and Children's Program
Gosford - 4323 1709

Elandra Women and Children's Program
Toukley - 4396 4263

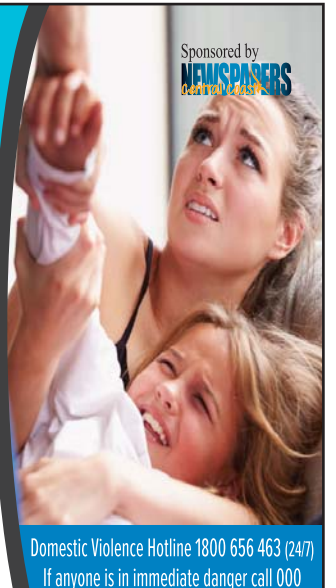
Neleh Women and Children's Program
Woy Woy - 4340 1052

Rondeley Domestic Violence Response Program
Wyong - 4340 7088



Coast Shelter's Domestic Violence Prevention Programs are supported by the Marie Lowndes Charitable Foundation

*ANROS Horizons 1 (2015)



Domestic Violence Hotline 1800 656 463 (24/7)
If anyone is in immediate danger call 000

HAVE A GO AT
LAWN BOWLS



"SPONSORED BY CENTRAL COAST NEWSPAPERS"

CONTACT EVERGLADES
RECEPTION ON **4341 1866**
TO MAKE AN APPOINTMENT FOR YOUR FIRST LESSON.

NEW BOWLERS WELCOME!

WHY NOT HAVE A GO AT LAWN BOWLS?

Join as a new Bowls Member with Everglades Country Club from 1st July until 30th September 2018 for only \$50.

Never played bowls before?

That's ok, we want you to be a part of our wonderful Bowls Community. Coaching and equipment is available for new players.

Why not keep active, enjoy the outdoors and make new friends with the Everglades Country Club Bowls Community?

\$50
For New Bowls
Members**



Dunban Road, Woy Woy **4341 1866**
everglades.net.au

**40%
OFF
RRP†**



\$14⁹⁹
ea
SAVE \$11
OFF RRP †



\$23⁹⁹
ea
SAVE \$18
OFF RRP †



\$23⁹⁹
ea
SAVE \$16
OFF RRP †

NATURE'S OWN Double Strength Cold Sore Relief L-Lysine 1000mg 100 Tablets, Glucosamine Sulfate 1500 200 Tablets and Triple Strength Garlic + C, Horseradish 150 Tablets*



**50%
OFF
RRP†**

\$22⁴⁹
ea
SAVE \$22.50
OFF RRP †



**40%
OFF
RRP†**

\$19⁹⁹
ea
SAVE \$14.80
OFF RRP †



**35%
OFF
RRP†**

\$29⁹⁹
ea
SAVE \$18
OFF RRP †



\$9⁴⁹
ea
SAVE \$5.50
OFF RRP †

BLACKMORES Bio C 1000mg 150 Tablets*

BLACKMORES Executive Sleep Formula 28 Tablets*

BLACKMORES Omega Daily Concentrated Fish Oil 200 Capsules and Superkids Immune Gummies 60 Pastilles*



\$9⁴⁹
ea
SAVE \$6.46
OFF RRP †



\$11⁶⁹
ea
SAVE \$8.26
OFF RRP †

**40%
OFF
RRP†**



\$17⁹⁹
ea
SAVE \$12
OFF RRP †



\$23⁹⁹
ea
SAVE \$16
OFF RRP †

SWISSE Ultiboost Zinc + 60 Tablets, Immune 60 Tablets, Vitamin C + Manuka Honey 120 Chewable Tablets and High Strength C 1000mg 150 Tablets*

UMINA BEACH 315 West St, Umina Beach, NSW 2257
Ph: 4341 1488
Mon - Fri: 8:30am - 5:30pm
Saturday: 8:30am - 3pm
Sunday & Public Holidays: 9am - 3pm