



An artist's impression of the type of development that will be encouraged under the proposed Woy Woy DCP.

## Plans for Woy Woy

**Plans which would allow high density development of the Woy Woy commercial area are being prepared for Gosford Council.**

Planning consultants Keys Young have almost completed a draft Development Control Plan, following two public workshops held last month.

The plan will be presented to a special meeting of the Woy Woy Town Building Committee next Monday, March 29.

The plan extends concepts developed for the northern "village renewal" precinct of the town.

It includes street frontages of up to three storeys, with a fourth storey set back, in some areas and the development of multiple use buildings, which may contain

combinations of retail frontage, office space and residential accommodation.

The plan encourages pedestrian links across the town and the development of frontages to the laneway from the post office to KFC.

A submission from the Peninsula Chamber of Commerce to the consultants said the plan should emphasize development of the town as the Peninsula's main commercial centre and as an efficient rail head.

However, it suggested that building heights be restricted to two or three storeys in certain areas of the town, rather than four.

Public comment on the plan is expected to be sought before it is finally approved and put into effect.

## Fast ferry announcement sees home prices rise, resort units sell

**With the approval of the fast ferry proposal, almost a quarter of the available apartments at the new \$92 million Grand Mercure Ettalong Beach Club Resort have been sold.**

In is what a good sign for the viability of Ettalong as a major tourist area, interest from prospective customers is continuing.

Mr Ric King, marketing director for the serviced apartments, said there was initial disappointment when many in an original rush left small deposits but did not follow up to exchange contracts.

However, about 40 of the 228 apartments have now been sold.

The average price for an apartment is \$260,000.

A \$22,000 furniture package must be bought if you wish to lease your apartment.

One buyer has bought an apartment outright and about half the buyers are locals, the rest from Sydney.

Real Estate agents contacted by Peninsula News say the average price of existing residential homes in the nearby area has increased by between 10 and 20 percent since Christmas, with very few being available for less than \$200,000.



Broken Bay, from the site of the proposed fast ferry wharf at Ettalong Beach

**Gosford Council is to seek \$100,000 "pre-construction funding" to further investigate three railway crossing options at South Woy Woy.**

The options would see a bridge or tunnel across the railway line at the bottom of Bulls Hill, with a possible deviation of Woy Woy Rd to provide a more direct route from the quarry to the bottom of Bull's Hill.

These options were those most favoured by the South Woy Woy Progress Association, the Peninsula Chamber of Commerce and the Ettalong Ratepayers and Citizens Progress Association, as well as the bulk of the public response to the exhibited plans.

Of 105 submissions, 81 favoured a tunnel and six supported the

## Council seeks rail crossing funding

Woy Woy Rd deviation through the National Park.

Most respondents living in the vicinity of the council's previous "overbridge" proposals objected on grounds of scenic degradation, loss of property value, noise, overshadowing, effects of lighting on the bridge and alteration of traffic patterns.

In a detailed submission, the Chamber of Commerce stressed that the crossing should be considered in the context of traffic management across the Peninsula, traffic destination and purpose, population growth, redevelopment of the Ettalong Beach War Memorial Club, the fast

ferry and the upgraded status of Woy Woy Rd.

The submission of the South Woy Woy Progress Association expressed concerns with "concepts incorporating flyovers of elevated roadways that are so highly intrusive and sensitive to the South Woy Woy community".

The association suggested that Shoalhaven Drive be re-opened and upgraded at the existing underpass "for free traffic flow".

Council officers did not favour the suggestion.

The Umina High School Council was opposed to any option that "would re-route extremely heavy traffic past Umina High School

and create a major safety problem before and after school hours in the vicinity".

The Ettalong Ratepayers and Citizens Progress Association unanimously supported an underpass of the railway line at the foot of Bull's Hill, joining Woy Woy Rd to Nagari Rd.

Council officers said that to "do nothing" about the crossing was "unacceptable as a long term strategy" and suggested further assessment of favoured options.

The railway crossing is estimated to cost from \$5.3 million for a tunnel alone, up to about \$20 million if the Woy Woy Rd deviation is included.

It is understood that because the project was a combination of level crossing replacement and work on classified regional roads, the council may only be responsible for one 'sixth the total cost.

Pre-construction funding is required to further develop the options and would cover an environmental impact assessment, three dimensional modelling and detailed site surveys.

It is understood the Roads and Traffic Authority may consider providing pre-construction funds, on the basis that the proposal is primarily safety improvement initiative.

The council also decided to ask both Liberal and Labor candidates for Peats to support a request for a \$100,000 grant from the State Government for the work.

BRUCE KERR

REAL ESTATE

on the move



# Peninsula COMMUNITY ACCESS News

Welcome to Peninsula News. Our publication is a new monthly newspaper for the citizens of the Peninsula.

Through the major sponsorship of Bruce Kerr Real Estate, we have been able to bring this first issue to you in colour and with four more pages than we had initially anticipated.

We hope you find our mix of news, features, business, sport and community announcements entertaining and informative.

The paper is a non-profit venture, written by Peninsula residents for Peninsula residents. This means that anyone can express an interest in becoming involved. It is truly your paper.

Our editorial staff are enthusiastic volunteers. However, we can do with many extra hands to help achieve our goals.

The newspaper is published by the Peninsula Community Access Newspaper Inc, a community-based non-profit association. Your support in 'becoming a member, just \$5 a year, would be most welcome.

The association's committee sets the paper's policy. For instance, it is policy that around 75 per cent of the content of this paper is local news. This 12-page issue has the equivalent to 36 pages of a suburban newspaper with a 25 per cent news content.

The committee has sub-contracted sponsorship and newspaper production to local resident Cec Bucello, who also produces the national Inside Soccer newspaper.

The committee currently includes people with experience in journalism, community development, labour market programs and education. Particular mention should be made of Carl Spears, a journalism student, who has written many of the articles in this issue as well as many for next month.

We hope you find the result of our efforts, a professional publication adhering to journalistic and community principles and to your liking.

But once again it is your paper, please feel free to become involved at any level that you wish.

Mark Snell, President

Peninsula Community Access Newspaper Inc.

Office: 11/36 Railway St, Woy Woy Phone: 43446543  
E-mail: openwin@openwindows.com Fax: 43446487  
Committee: Christine Burge, Carolyn Carter, David Fitzgerald, Mark Snell, Carl Spears, Michael Walls

Sponsorship & production: Cec Bucello

**Contributors:** Marie Andrews, Lynne Bockholt, Joan Fenton, Mary Hawthorne, Colin Henson, Jim Lloyd, Jamie Pocock, Geoff Preece, Kaye Ryan, Mark Snell, Carl Spears, Paul Tonkin, Debra Wales, Matthew Wales, Neil Wilson  
Legal responsibility for editing, printing and publishing, and election comment in, Peninsula News is taken by Mark Snell of Homan Close. Umina, for Peninsula Community Access Newspaper Inc.

## Business Internet Solutions

Connect your whole LAN to the Internet,  
with your own email and web server.

Economical, permanent connection, simple to use,  
compatible with Y2K and multiple platforms.

contact T&B: info@tandb.com.au  
http://www.tandb.com.au (02) 4344 4146

Wilson Graham

& Associates

CPA

AUSTRALIAN SOCIETY OF CPAs

Cnr Blackwall & Victoria Rds, Woy Woy 4341 3640

proud to support the launch

of our community newspaper

The Mortgage Doctor

Peninsula's Mortgage Specialist

Got Mortgage Pains??

See the Mortgage Doctor

Let us find the right loan for you from our extensive list of over 18 lenders at no cost to yourself

For your FREE consultation

Phone 4342 7324 or 0412 099 418

# A bigger voice deserved

The Peninsula Community Forum last year recommended the introduction of a newspaper specifically for Peninsula residents.

They felt that Peninsula residents deserved a bigger voice than that which was currently available to them and saw several additional benefits being possible as a byproduct from such a venture.

The Peninsula Chamber of Commerce Committee decided to support this concept and to actively encourage its development.

As a result, The Peninsula Community Access Newspaper Inc was formed as a non-profit organisation whose task it was to develop the newspaper.

The on-going hard work of that Committee has now been rewarded by the launch of The Peninsula News.

Our community can be justifiably proud to have its own newspaper, particularly one of such quality and professionalism.

The Peninsula News concentrates on all matters likely to be of interest to Peninsula

residents and businesses.

It is non-partisan and non-political and welcomes input from all members of the community.

We are pleased to show our support by including our newsletter in this history-making first edition.

This can only add to the informative nature of the publication and be of further benefit to readers.

I expect that The Peninsula News will quickly become the most cost-effective avenue for businesses to reach Peninsula residents with their messages.

For this reason and for the community benefit that the paper will provide, I urge members and non-members alike to give their support to The Peninsula News.

Matthew Wales President Peninsula Chamber of Commerce

## Letters to the editor

Letters to the editor are welcomed and should be addressed to Peninsula News, PO Box 585, Woy Woy 2256. Contributions in Word format sent via e-mail to openwin@openwindows.com or on disk save us having to retype them.

## Important forum

It is pleasing to know that the Peninsula area will once again have its own community newspaper.

The Peninsula News will provide an opportunity for local schools, community and sporting groups to highlight their activities and achievements.

It will also provide an important forum for local news and issues of concern to Peninsula residents.

Congratulations and I wish The Peninsula News every success for their important first edition.

Jim Lloyd MP Member for Robertson

# Bias for the Peninsula is appropriate

Congratulations to you and your band of merry workers for achieving the successful publication of our newest newspaper The Peninsula News.

Your desire to promote such a newspaper has always been well received, unfortunately the effort in achieving it has been left to a small few.

We encourage you because the Peninsula will be represented in a broader sense by your publication.

On the ethos of a newspaper devoted to community and for a non-profit purpose, we commend you.

Whilst the existing newspapers have not been biased against the Peninsula community, it is appropriate that your newspaper will have a bias for the Peninsula community.

We encourage you to maintain your independence on Peninsula issues, to take a broad view in the best interest not only of the Peninsula community but the Central Coast and the further community at large.

Our region has been developed by those who worked hard and by some who took risks.

You today are taking a risk in letting your heartfelt desires come

to the fore.

Many successes are built on effort, emotion and desire to succeed when success appears difficult.

Our best wishes to you and your staff (unpaid as they may be at this stage) for a successful and long life as a newspaper of credit and worthy contribution.

It is easy to be a critic, it is not easy to be an achiever - this is a motto which you have started to use in your formation and would be a credit for this newspaper's future.

Once again congratulations.

Paul Tonkin Tonkin Drysdale Partners

# An opportunity for community discussion

Welcome to the inaugural edition of the Peninsula News.

It's wonderful that our local area has now got its own newspaper aimed at providing a broad coverage of those things which make the Peninsula a unique and interesting place to live.

As we move towards the end of the century it is important for us to discuss, as a community, how we want to move forward into the new millennium.

What do we want for the Peninsula and more importantly what are we absolutely against?

How should we tackle important issues such as the lack of local employment which leads to far too many of us having to travel great distances to find work?

How can we keep the Peninsula's population at a manageable level so that we don't become simply an outlying Sydney suburb and lose the things that make this area a good place to live? How should we address important matters such as infrastructure provision,

medium density development, social and law & order problems, local environmental blackspots, and youth unemployment?

How can we ensure that we get our fair share of State and Federal government funding?

The opportunity to communicate via the pages of this new local paper is a welcome development in open community debate about how we are going to shape our future.

I hope to be able to use the pages of the Peninsula News to tell you what's happening at Council and to keep you informed of decisions which can have a profound effect on our lives.

It is a fact that 28% of Gosford City's population lives on the Peninsula and we need to be continually vigilant to ensure our interests are being looked after.

One thing I am sure of is that we don't get 28% of Council's total expenditure and we need, as a community, to examine ways that this can be brought about.

One of the most effective ways

is to ensure that the people who represent us, and those who aspire to, Federal, State and local, know our views and know that we expect them to put the Peninsula and its community first at all times.

It seems to many local residents that other areas of the Central Coast, and other areas of the state, do very much better than our area and this must change.

Knowing that their actions are going to be open to greater public scrutiny is no bad thing.

For far too long politicians have voted against their community's interest safe in the knowledge that they will not be scrutinised.

Our own local paper should change all that!

I would like to Congratulate the Peninsula Community Access Newspaper Committee which have been planning this paper over the last 12 months.

I am sure the paper will be extremely successful and will be welcomed as a genuine community asset.

Lynne Bockholt



# Council's \$8 million of projects are on the way

**Gosford Council has issued its progress report for projects undertaken as part of its Financial Strategy and as other special projects.**

Eight of the 16 projects, all with advisory committees, concern projects on the Peninsula.

More than \$8 million will be spent on the Peninsula on the following projects:

Woy Woy Branch Library extensions are planned to a cost of \$980,000.

Concept plans have been completed Investigation into ways of preserving the heritage value of the existing building is in progress.

The committee consists of Crs Whalan, McGowan, Sansom and Brooks, other interested councillors and library services manager Mr Alan Flores.

**Peninsula Youth and Recreation Centre** (\$1.5 million) was initially constituted with a committee comprising Community Centre representatives Mike Harrold and Vicki Shields, resident representative Dion Richardson, Crs Bockholt, Penton and Holstein, interested councillors and two council officers.

The committee has since reconstituted into two groups, one to deal with the Peninsula Community Centre and the other the Youth Recreation Centre.

Draft concept plans have been

completed, with a survey of the Woy Woy pool site Consultants have been appointed to undertake a feasibility study, which will result in a plan which will address management options and the facility mix.

**Peninsula Community Centre** (\$1.25 million) project includes renovation of the existing building and providing facilities for the Woy Woy Little Theatre as a separate building.

The community centre is providing a brief for use by the architect.

**Umina SEC Site** (\$500,000) stage one works started in May 1998, with the support of the Work for the Dole Scheme.

A "sunset" committee which included representatives of youth groups as well as councillors was expected to hand over management of the project to the PCYC after its annual meeting in February.

**Ettalong Beach Central Business District (CBD)** streetscaping works costing \$1 million are scheduled for completion this month.

The committee consisted of Crs Bockholt, Penton and other interested councillors, David Sloane, Hugh Findlay, Ron Clifton, Tony O'Neil, Jim Bohle, Tony McPhee, Rex Chapman, Matthew Wales, Debra Wales, Joan Chapman, Peter Hale and

council officers Geoff Bent and John Cragg.

**Umina CBD** (\$1 .5 million) draft concept plans were exhibited at the end of last year.

Construction is scheduled to start in May and end in August.

The committee has been Cr Penton and interested councillors, Ian Radford, Ken Hoste, Greg Sandell, Vicki Hanson, Cathy Hunter, Jill Bignall, Bruce Croft, Jan Wall, Liam Campbell, Barbara Ketley, Debra Wales and council officers Geoff Bent and John Cragg.

**Woy Woy CBD** (\$1 .5 million) draft concept plans were exhibited at the end of last year.

Construction of the other works is scheduled to start in May and finish in August.

The committee is Cr Bockholt and interested councillors, Bob Knowles, Tim Peters, Heather McKenzie, Joan Fenton, Christine Burge, Ken Dyer, Janet Matthews, David Chandler, Merv Clayton , Warren Cross, Mark Snell, Debra Wales and council officers Geoff Bent and John Cragg.

In addition to these Financial Strategy projects, Gosford Council has established a "sunset" committee to deal with the **Fast Ferry** project.

The role of the committee, comprising primarily Ettalong representatives, includes addressing com-



Bowens Photographics

Fiona Fraser of Woy Woy held her reception at Forresters' Beach Resort.

## Young people graduate

**Eleven local young people will graduate from a three week intensive pre employment program this Friday at the Ettalong Beach War Memorial Club.**

Sheree Arrowsmith, Nathan Clarke, Avaleen Doble, Robert Lenton, Sarah Martin, Erin Orgo, Tom Ryan, Carl Stubberfield, Paul van der Linden, Noel Wheatley and Paul Wilkins have attended the program run by Community Success Pty Ltd.

The program is designed to build self-confidence and workplace skills which will assist the participants in finding work.

All 10 of the first group of participants in the program were placed in jobs upon their graduation last November.

Community Success managing director Ruth Moncrieff said: "Four months later, nine out of the 10 are still working and one is reviewing his choices." The War Memorial Club is providing \$180,000 sponsorship to the program for its first year, the largest sponsorship in the club's history.

The way the community looked after its young people was vital to the community's future, said Club

general manager Peter Hale.

This was particularly so in helping local unemployed find jobs and establish a positive direction in their lives.

He said the club was proud to be associated with the program which offered "real hope and opportunity to young people".

Through the investment, made possible through poker machine tax changes, the club hopes to encourage others in the industry to sign up so that more young people can be helped.

The program includes a one week stay at Challenge Ranch at Somersby.

The young people participate in a series of outdoor activities, such as rock climbing and abseiling.

The other two weeks of the program are spent at a training centre at Gosford.

They are helped in buying clothes and with their presentation.

The program includes a visit to the Ettalong club, where they tour the facilities, are introduced to management and are invited to vie for positions which may be available there.

For further information about the program, contact Ruth Moncrieff on 4322 0188.

## Pensions rise on CPI change

**Peninsula pensioners will be helped by pension increases applying from last Saturday, Member for Robertson Jim Lloyd said last week.**

The maximum single rate age and veterans' pensions will rise by \$4.10 to \$361.40 a fortnight.

The maximum partnered pension will increase by \$3.50 to \$301 .60 a fortnight for each member of a couple.

The rate increase is the result of changes to the Consumer Price Index (CPI) and the increase in male total average weekly earnings.

## You too can help

**If you like what you see in Peninsula News and would like to lend your support, there are many ways that you can help:**

As a **sponsor** - Because of the high costs involved in producing a high quality newspaper, all sponsorship is welcome.

If required, advertising space will be provided for your sponsorship;

As a **volunteer** - Help is required to contact all community groups, to co-ordinate information received, to take details from callers and to attend various meetings to obtain the news as it happens;

As a **subscriber** - Copies of each edition of the Peninsula News will be mailed to subscribers on publication date.

In this way you can be sure not to miss out:

As a **member** - The Peninsula News is owned by a non-profit Incorporated Association whose aim is to provide the community with the best possible community newspaper.

If you are interested in any or all of these, call the Peninsula News office and we will be glad to help.

Phone: 4344 6543 Fax: 43446487

## Ratepayers warned of environmental danger from ferry

**The fast ferry could cause an "environmental disaster" on the Peninsula, a meeting of the Ettalong Ratepayers and Progress Association (ERPA) was told last week.**

Twenty-four concerned residents attended the meeting.

Committee member Philip Halter said the Environmental Impact Study (EIS) sponsored by Fast Ships, the owners of the fast ferry, was "vague and conflicting." Mr Halter said there were many unanswered questions to how much environmental effect the fast ferry would cause.

Mr Halter said the EIS did not answer environmental concerns about noise levels, storage of fuel, impact on local traffic and recreational fishing, exclusion zones, speed limits or the size of the ferry.

"If the questions are not answered we will end up with an environmental disaster at Ettalong," he said.

Mr Halter said the EIS refers to a 50-metre boat but there was now talk of it being 60 metres.

A further independent study should be done, he said.

He suggested they contract a consultancy affiliated with the

University of New England in Armidale.

The consultancy, Resource Systems Management Consulting, promotes itself as "process consultants who aim to a service to facilitate a strategic and unified community response to complex and contested issues".

The consultant's fee would be \$6600.

Mr Halter said the public must be educated about the environmental consequences.

Mr Ian James, a commercial fisherman, said the seagrass beds, a breeding area for fish, were under threat.

"There will have to be dredging of the channel to allow the ferry through the shallows of Ettalong," he said.

Mr James said this would have a devastating effect on local fish stocks for both recreational and professional anglers.

"Fish stocks are already 70 percent down and a lot of Broken Bay prawns start their life in Ettalong," he said.

"There will be massive environmental damage for more than just Ettalong if this ferry goes ahead and your community from top to bottom will be destroyed." Mr James said previous dredging

in the area had been a disaster.

Chairman Mr Rob Molin said ERPA would consult with other groups at Hardys Bay and Wagstaffe and lobby Gosford Council.

The fast ferry wall needs its own channel and recreational anglers would probably be prohibited, he said.

Mr Molin was concerned about the possibility of 55,000-fuel tanks in the middle of Ettalong Beach.

The next meeting will be on Wednesday, April 14, 7.30 pm, at the Ettalong Progress Association Hall.



# Chamber News

## From The President

I think I speak for many of our members when I say that the first part of this year has absolutely flown past.

I am still coming to terms with the demise of 1998, We are all busy and all thankful for a buoyant economy, which has brought new business and new opportunities.

Without a doubt, 1999 will be a memorable year for many of us and I believe that the Peninsula Chamber of Commerce has a significant roll to play leading up to the new millennium.

Over the past eight months since the last Annual General Meeting, many issues have arisen, problems solved and planning put in place so as to position the Chamber for a more prominent roll in our business community.

There have been a number of hard decisions made in order to resolve administrative problems in terms of sub-committees and there will be further decisions required over the next six months to consolidate the Chambers activities.

Your Chamber Executive have worked very hard to address issues that will effect us all in business over the next few years and I would thank all those including Mark Snell (our tireless Secretary) and Don Wilson (our stalwart Treasurer).

The following highlights are an example of the excellent prospects for the Peninsula both in the short and long term.

## Ettalong Beach Resort

The proposed new Ettalong Beach Club and hotel resort is due to commence construction in the

first week of April.

This long awaited project will set a new development standard on the Peninsula and will be the catalyst for renewed investment into our community.

The development will not only mean some 400 construction jobs, it will also create 200 additional permanent jobs when the resort complex is up and running towards the middle of next year.

Building works will be carried out by Fletcher Constructions from Sydney together with local building contractors, Pluims Constructions.

Pluims involvement in the project will result in many local construction jobs being created.

The Peninsula stands to gain an increase in tourist numbers, which will serve to enhance local business operators and generate real employment and investment opportunities.

Peter Hale, his staff and the Directors of the Ettalong Beach Memorial Club should be congratulated for their efforts in getting the project off the ground.

## Woy Woy DCP

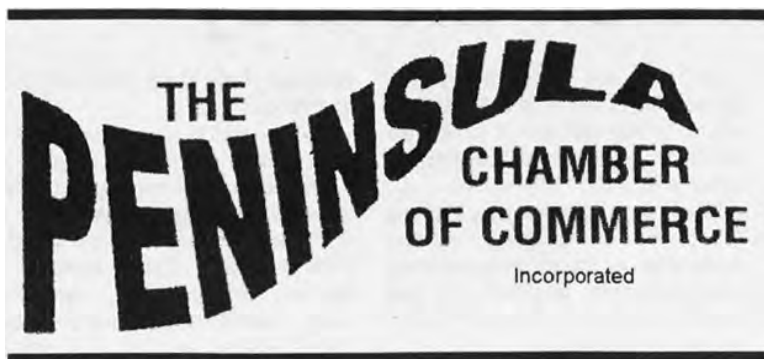
An important step has been taken in the future direction of the Woy Woy commercial centre.

Council appointed consultants Keys Young have now completed the draft Development Control Plan document for Woy Woy which is due to go before Gosford City Council for adoption during March.

The Chamber has provided considerable input throughout the document's evolution with final submissions being made by the Chamber as late as the end of February.

The DCP is a vital planning stepping stone for the revitalisation of the Woy Woy CBD.

It is timely that the document



is due to go before Council with streetscape works due to commence under Council's Financial Strategy.

The Woy Woy Village Renewal Committee have played a pivotal roll in the DCP process and they should be congratulated for their efforts.

Congratulations also to the Chamber members of that committee.

## Council's Financial Strategy

The Streetscape Masterplan process has now been completed in each of the three Peninsula CBD's.

The Ettalong Beach Streetscape Masterplan has been finalised with the support of the Chamber of Commerce, Work is now under way with the remainder of its street upgrade works with the footpath paving continuing (including mosaics prepared by the Ettalong Beach Arts & Crafts Centre) and the new car park behind the Commonwealth Bank for additional shopper parking.

Woy Woy's Streetscape Masterplan has also been finalised with the support of the Chamber of Commerce.

Work is due to commence in April which will include further

footpath paving, streetscaping and the upgrade of Pelican Park.

The Umina Beach Streetscape Masterplan was finalised.

However, submissions made by the Chamber of Commerce on behalf of our members in Umina Beach were not included in the plan by the Building Committee.

Many aspects of the proposed plan do not have the support of the Chamber including further raised "wombat" pedestrian crossings and angled parking in the centre of Trafalgar Avenue amongst other matters.

It was recommended by the Chamber that an independent planning consultant be engaged to prepared similar plans to that approved for Ettalong Beach and Woy Woy.

The Umina Beach Building Committee has chosen to proceed with the plan as exhibited despite the Chamber's objections.

## Ettalong Beach Fast Ferry

Gosford City Council last month issued a "deferred commencement" approval to the Ettalong Beach fast ferry proponent Fast Ships Ply Limited.

The approval will now enable the company to proceed with the project subject to the return of additional reports, which are to address car parking and environmental issues.

These are currently being prepared for submission to Council.

It is pleasing to note that input is being provided to the additional reports through a "sunset" committee set up by

Council which includes community representatives.

The "sunset" committee is being chaired by Councillor Lynne Bockholt Fast Ships Ply Limited has advised that it is aiming to operate the fast ferry by the middle of the Year 2000.

The project will include the construction and operation of a monohull 450 seat capacity high speed ferry, pontoon jetty at Bangalow Street, bus and taxi interchange area and upgraded amenities adjacent to the wharf.

For the Peninsula, the impact of this project will be far reaching.

For our commuters, the ferry will provide a high speed alternative that will transport them to Circular Quay in 35 minutes.

For our tourist industry, the ferry will provide new jobs, new business opportunities and new capital investment into our community The ferry service will also compliment the Ettalong Beach Resort complex and provide linkages to other tourist activities and operators not only on the Peninsula but on the whole of the Central Coast.

## Tibco and the Internet

As many would be aware, Tibco Software Inc. has been up and running for some months in Woy Woy.

Alan Williams and his team have adapted well to the local business environment and we welcome his team to our business community.

With the assistance of Tibco, the Chamber of Commerce is planning to set up a Peninsula Chamber of Commerce Web Site, which will have links to other relevant Web Sites such as Central Coast Tourism, CCRDC and others.

The Chamber will be encouraging all its members to become part of the Internet process so that we can adapt to new business practices in the new millennium.

Discussions are proceeding with Tibco and we will keep all our members informed on progress.

Matthew Wales

## Carr rips off our local youth!

Remember the TAFE site at Woy Woy?

That's the place the late Tony Doyle had the State Government acquire so the youth of the Peninsula could gain an education and skills locally.

You may have forgotten that the **Carr Government** sold the site and **promised** that the funds would be used for youth facilities in our area.

**What did you do with the money Mr Carr?** Our youth have seen none of it!

We need better roads, better facilities for our youth, and a return to a time when you could leave your doors open without fear.



Debra Wales is the only candidate for Peats in the forthcoming election who will **put people first**.

On 27th March give Debra a chance to do the job properly.



Authorised by Lance Barrett, 34a Blackwall Road, Woy Woy

## Appeal for computers

**An appeal to raise \$35,000 for a computer centre at Ettalong Public School has been launched by the school's parents and citizens association.**

A computer room is planned with links to a computer in each classroom.

With internet access, the project would be designed to help all pupils become computer literate.

It is hoped that tutoring programs for parents would also

be available.

Parents are constructing a "thermometer" board to illustrate progress towards the appeal target.

Fund-raising efforts planned by the P&C include stalls, a monster fete, a bush dance and bowling alley days.

Contacts in computer companies or businesses upgrading their computer systems are sought, together with volunteers willing become involved in working bees to lay cables.

If you're getting married soon, why not let Bowen's Photographics take care of those all important wedding photos?

Bowen's will send a professional photographer to your home, to the ceremony and to the reception and will present you with over 150 photographs and enlargements in a special album for a fixed price.

**Let Bowen's look after you.**  
Shop 8, Deepwater Plaza, Woy Woy. 43443255



# Concern over tip impact

**Gosford Council has rejected requests for a Woy Woy residents committee to be set up to oversee the environmental impact of the Woy Woy tip, following an EPA audit of the site.**

Gosford Council says it is answering the Environment Protection Authority's (EPA) concerns in a recent audit on the tip, Councillor Lynne Bockholt suggested a committee of Councillors, residents and the Woy Woy South Progress Association be set up.

The EPA audit said Council had not provided adequate management of stormwater runoff, monitoring of discharged water or the proper supervision of the type of waste being dumped. The EPA's main concern is uncontrolled stormwater runoff will mix with, and carry possibly hazardous toxins into nearby Patonga Creek in Brisbane Water National Park.

Other concerns raised in the report include inadequate covering material and the inadequate

compaction of waste, damaged perimeter fencing and a lack of a recovery program for CFC gases.

Council has since built extra dams to capture the contaminated water.

Council now takes the water to the Woy Woy sewerage works.

The Woy Woy tip is nearing its capacity and the environmental pressure can only get worse.

"We have a maximum 10 years left in our tips," Mayor Chris Holstein was reported saying.

Council's current policy is to extend the Woy Woy tip.

The other possibility is to open new sites at either Ourimbah or Bulls Hill.

Councillor Lynne Bockholt said the new sites were not wanted.

"I think if the current tip is to be continued to be used, we have to ensure it is not just filled with the same garbage," she said.

Mr Matthew Wales, the President of the Peninsula Chamber of Commerce, said Gosford Council should address the EPA's concerns before any expansion is contemplated.

"Expansion of the existing tip may be a good idea.

But not at the expense of our precious local environment," he said.

"If the tip can be expanded, let's make sure that it is both environmentally sound and economically feasible.

The cost impact of moving the waste to some other location outside of the City of Gosford will be considerable for both the business sector and the wider community.

"Let's ensure that the debate is both thorough and even-handed," he said.

Mr David Hart, Manager of Waste Services at Gosford Council said the tip had another ten to fifteen years left if it continues to be used as it is now.

"Gosford Council produces a lot of waste products but we have waste minimisation policies in use", Mr Hart said.

"If the general community can minimise waste also, we could have about 15 years left.

Extending the tip by quarrying

more land will extend the tip's life immensely."

Mr Hart said in reply to those against a tip extension, "If we have to take the waste somewhere else, the extra cost will be a burden to ratepayers.

"About 80 concerned residents had attended a public meeting on September 26 last year on the issue.

Councillor Bockholt said the meeting drew two strong resolutions, that a committee to discuss the issue be set up immediately and that there was no confidence in a commissioned environmental impact statement (EIS) prepared by council.

Council decided monitoring the site with quarterly reports was sufficient and there was no need for a committee to be set up to monitor water quality in Corea Bay.

Councillor Bockholt said there were concerns about the EIS.

"The statement does not attempt to assess the cumulative impact of the tip, the proposed extension or the Woy Woy sewerage works on the nearby waterways," she said.

## IN BRIEF

**Gosford Council's corporate plan for the years 1999 to 2004 is expected to be exhibited for comments 'for four weeks starting April 16.**

The council will hold a public workshop at Umina Community Hall, formerly known as the Progress Hall, on Wednesday, April 28, from 9.30 to 11.30am.

**Umina Beach Country Women's Association holds craft days on Wednesday mornings from 9am to noon.**

A meeting is held on the first Monday of the month from 1 pm.

Each year, the association members study a foreign country.

This year the country is Spain and all things Spanish.

**Umina resident Robyn Northwood is secretary of the Central Coast Bush Dance and Music Association.**

The association holds bush dances to live music at East Gosford Progress Hall on the fourth Saturday of each month.

The next dance is 8pm next Saturday.

The band is Currawong. Entry is \$12 including a light supper.

With inquiries, phone Robyn on 4344 6484.

**Woy Woy CBO Building Committee has asked council traffic engineers to investigate installing roundabouts at several sites around the town.**

They are the corners of Victoria Rd and Charlton St, Ocean Beach Rd and Railway St and the corner of Railway St and The Boulevard, at the Bayview Hotel.



Some participants in Deepwater Plaza's recent Seniors' Excursion to Sydney Airport



Frank Russell and Marilyn Stephenson of Umina held a party last Saturday to celebrate their recent engagement.

## It eats large meals, sleeps in many beds and helps children

**What consumes 4800 meals, sleeps in 1600 beds and enables more than 1750 children with cancer to go to camp?**

It's the Camp Quality Caper 1998 ... a highlight of the year for three local St John Ambulance members.

Peninsula Division members Superintendent Tony Forrest, Divisional Medical Officer John Caska and 21C Colin Henson followed the event in a four-wheel-drive, providing First Aid and support to the 200 participants.

Starting at Milawa and travelling via Murray Bridge to end at Mudgee eight days later, the Caper raised \$264,000 bringing the seven-year total to \$1.2 million.

The days were long, Colin said, with 5am starts, up till midnight each night treating casualties and checking equipment.

The casualty list was also long with many suffering from minor ailments such as travel sickness, insect bites, sunburn and hay fever.

Fortunately, there were no major injuries from the few motor

vehicle accidents that did occur.

One participant was kept in hospital overnight for observation.

The St John four-wheel-drive was able to keep moving unhindered through countryside that sometimes stopped more than 90 per cent of Caper cars.

One 20km section of sand through Victoria's Little Desert National Park took four hours to negotiate, with more than 40 cars bogged to the axle.

Other local St John members attended in their private capacity.

Central Coast Division 21C Sue Wells, with team-mate Phyllis, won the best Comic Caper Award and the Grit and Determination Award for finishing after rolling their car three times just outside Bordertown, South Australia.

This year's Camp Quality Caper will run from Gilgandra to Gosford via Gin Gin in Queensland.

The Peninsula Division will be there, bigger and better, according to Colin.

The Division meets on Wednesday evenings at 7pm at its base in Umina.

For further information, phone 4342 0444.

## More police on the Central Coast

That's  
**87**  
more under  
Labor

**284**  
November 1994 under the Liberals

**371**  
January 1999 under Labor

Brisbane Waters & Tuggerah Lakes Local Area Command Actual Strength

**Barry Cohen**  
for Gosford  
**4324 6999**

**Marie Andrews MP**  
for Peats  
**4342 4122**

*The Central Coast Labor Team*



Authorised by L O'Malley, 1 Wyoming Road, Wyoming.



# History and heritage of the Woy Woy Peninsula

By Joan Fenton

This is the first of a series of articles on the history and heritage of the Woy Woy Peninsula.

If you have a question about the history of Woy Woy, or of the Central Coast, or if you have a special request for the column, please drop me a note (PO Box 720, Woy Woy 2256) and I will try my best to answer in a future column.

For those with an Internet connection, I will also include links each issue to some interesting history and heritage World Wide Web sites.

## Local historical organisations

There are many local organisations with an interest in preserving our past.

The featured group this issue is the Brisbane Water Historical Society.

The Society owns and maintains Henry Kendall Cottage, the Historical Museum Complex at 27 Henry Kendall Street, West Gosford (behind the shopping centre), which is open for inspection every Saturday, Sunday and Wednesday from 10 am to 4 pm, and all school holidays and public holidays (except Good Friday and Christmas Day).

The Society meets each month on the third Tuesday at 1 pm in the Uniting Church Hall, Donnison Street, Gosford.

Web page: <http://www.terrigal.net.au/bwhs>

## Shark tragedy

Newcomers to the area often



Tunnel Creek, or Deadman's Creek, Woy Woy (from an old postcard in my collection)

hear the story of a fatal shark attack at Woy Woy that happened many years ago.

The following is taken from the page one story that appeared in The Telegraph on Monday, December 24, 1934:

### BOY DIVES INTO JAWS OF SHARK Anguished Mother Sees Tragedy at Woy Woy

Watching his "very last dive" of the day from the verandah of their holiday shack on Horsefield Bay, near Woy Woy, yesterday, a mother saw her 14-years-old son plunge into the jaws of a shark.

With its victim gripped in its teeth, the monster reared its head out of the water, and then disappeared with its prey.

The boy's 12-years-old sister was swimming a few feet away.

Her leg was torn by the shark's fin as the man eater rushed to the attack.

It is believed the shark had marked her out as its prey, when the boy dived into its jaws.

The victim was Roy Inman, 14, of Wordsworth Avenue, Concord.

For about 11 years the Inman family, popular throughout the holiday district, have been making regular holiday visits to the shack.

The children: Roy, Joyce (12) and art elder Sister, Kathleen, have been swimming at the spot, using the boat landing stage as a diving platform, since babyhood.

During the past fortnight many people have seen a grey nurse shark, at least 10 feet long, cruising about.

Mrs. Inman, hearing of this, asked the children yesterday morning not to go in swimming.

However, a man later discounted

her fears.

Mrs. Inman then gave the two young children permission to swim.

Most of the morning Roy spent showing Joyce how to perform fancy dives.

Shortly before 2pm, Mrs. Inman's fears returned.

She asked them to leave the water.

"I'm going to have just one more dive, mum," said Roy.

"Watch me do this tricky one, then I'll come out." Joyce was treading water when there was a cry: "Shark! Oh! A shark!"

Something had brushed against her left leg.

She turned.

Then, as she told an ambulance man later: "I saw my poor brother in the shark's mouth."

The agonised mother saw the entire tragedy.

From the rear of the shack, the

father and elder sister, who had been painting, ran out.

Kathleen Inman saw her brother disappear with the shark.

Running to the boat, Mr. Inman pulled across the bay to Mortimer's store.

He ran in, crying: "Roy! Roy's gone! A shark took him! Get the police!"

Constable McKenzie went to the spot in the police launch, and was joined later by water police from Newcastle.

Meanwhile, Mr. Walter Walwork, a railway guard and ambulance man, who was visiting Woy Woy, rushed to the spot to attend Joyce's injury.

Until late last night dragging operations had been unsuccessful in discovering the boy's body.

## From the 'Might Have Been' Department

On February 7, 1961, the Gosford Times announced that a £50 million industrial and housing project would be established on a 500 acre site at South Woy Woy.

The new town would be called "Timberlake", and "arrangements had already been made with the Railways Department to build a station on the satellite town site".

A spokesman for the developer, former Senator J. P. Tate, added that "in the meantime, we can use the old railway at Woy Woy".

Apart from a new railway station, the new town was to include 1200 residential sites, 200 acres for industry, a modern shopping centre with provision for the parking of 4000 cars, a large bus terminal, two hotels, four service stations, four

## The Landing

Is this how it was  
two hundred years ago  
the cliffs fingered by a kind sun,  
the breeze gentle,  
the sandstone warm to grateful feet?

I lick salt roughness from my lips,  
centre on the wind's breath on my back.  
and, eyes closed, head tilted,  
melt into the day.

And then I sense other breaths. Behind me  
I hear the murmur of a gathering crowd,  
and somehow know  
they are the dark, original people,  
the people of the sun,  
their voices tempered by the centuries.  
I dare not look, for surely  
such magic must be fragile, and it seems  
I may be allowed to share with them  
these few brief moments.

Later I think  
what a good moment for time to stop,  
when the wind was fair, sky blue,  
and the longboat still out in the bay  
Mary Hawthorne

Governor Phillip landed at Pearl Beach on 4 March 1788. In March 1988, this event was recreated.

(All poetry published by Peninsula News has copyright remaining with the author.)

## Bruce Kerr makes history again

This history-making first edition of Peninsula News has been proudly and fittingly sponsored by one of the oldest businesses on the Peninsula.

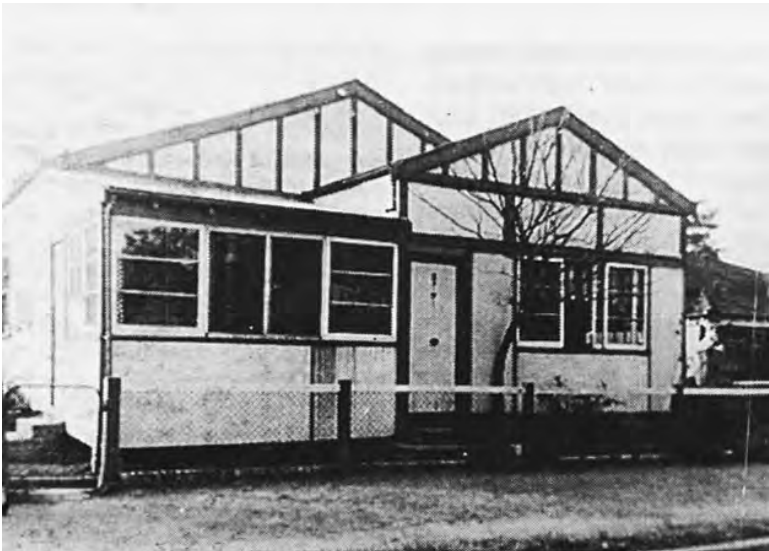
Established in 1938, Bruce Kerr Real Estate has now been serving Peninsula residents for over 60 years.

A local family owned business that employs a large number of local residents, Bruce Kerr Pty Ltd chose Peninsula News to announce the move of its Ettalong office to new premises on the corner of Picnic Parade and Ocean View Road, Ettalong.

When asked why he chose a new untried publication, the proprietor, Bruce Kerr replied: "I remember the Woy Woy Herald and how good the newspaper was for the community.

"I'm expecting the Peninsula News to be just as effective, if not more so, and look forward to being part of that exciting development.

"Our staff have worked in the area for many years and are well known within the community from



both our Woy Woy and Ettalong offices.

"We all applaud the community attitude of the paper and see this attitude as a mainstay of our business."

Shown here is the cottage Congareena which once stood on the corner of Picnic Parade and Ocean View Road, the very site of Bruce Kerr's modern Ettalong business premises

## Sports Clubs

Send us your results! Your stories! Your photos!

That's right, we want them and we will not throw them away.

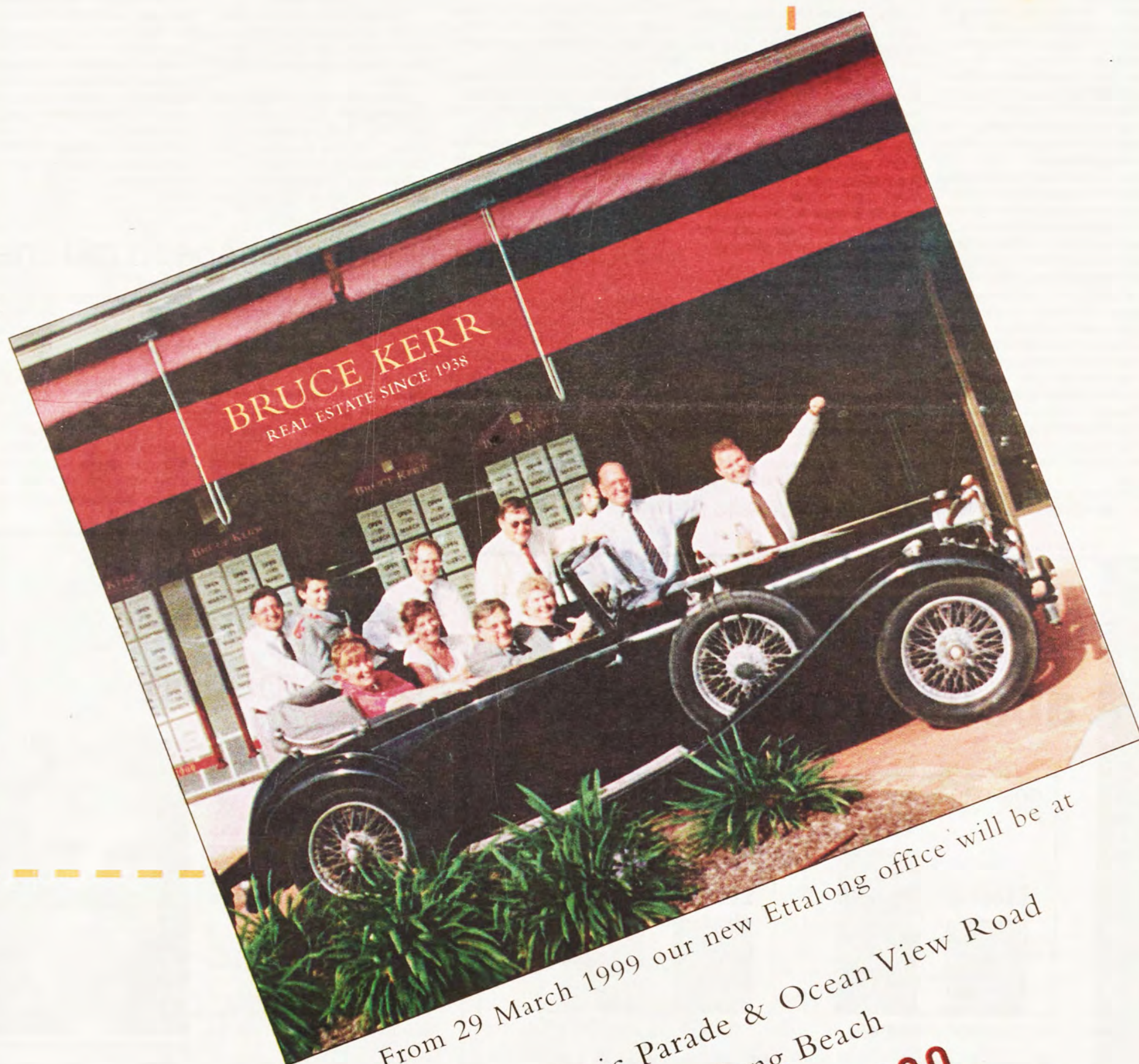
E-mail is preferred, otherwise on disk. If this causes a problem, give us a call and we will work something out. Phone: 4344 6543 Fax: 4344 6487





BRUCE KERR REAL ESTATE

on the move



From 29 March 1999 our new Ettalong office will be at

Cnr Picnic Parade & Ocean View Road  
Ettalong Beach

**Ph 4344 2000**



## LABOR: Marie Andrews

## NSW Election 1999

# I can identify with people's concerns

**We have all heard stories about someone being broken into, someone having their bag snatched, or someone being attacked.**

I can identify with people's concerns about personal and home security.

I lock my door at night, and I don't go to certain places at certain times.

What I am concerned about is a solution to crime.

To make Peats a better place we must, develop crime profile reports, develop local crime prevention plans, develop Safer Community Compacts and implement those Safer Community Compacts.

The Carr Government is doing all this with the Proceeds of Crime Program.

where the property of convicted criminals is sold off to assist in funding this crime prevention project.

The Carr Government is providing \$96,200 to set up this program with Gosford City Council.

All of this \$96,200 is from the proceeds of crime, now providing for crime prevention.

Other crimes specifically against women can happen anywhere.

One of the solutions to this problem is to have security cameras on stations, guards on trains after 7pm, better lighting around bus stops, and passenger help points.

The Carr Labor Government is spending \$55 million on upgrading security at stations, including security cameras, high intensity lighting and commuter help points.

In addition the Carr Labor Government is spending an additional \$18 million on City Rail security guards after 7pm on all trains.

Drug related crime is

unfortunately another feature of modern society.

If we could get rid of drug related crime we could reduce property crime by 80 percent.

The solution to the drug problem is to introduce a team of police, educators, youth and health workers who's specific aim is to fight the drug and alcohol problem of our community.

Teams such as these could identify the source of the drugs.

They could meet with community leaders counsel families effected by the drug problem.

The Carr Government has committed \$2.4 million over the next four years to fund this program, known as the Community Drug Action Team, as part of the Fighting Drugs plan.

Only job opportunities for our young will reduce the total level of crime.

The Carr Government will bring up to 350 new jobs to the region through six new initiatives in the next two years.

I have been working hard to get a fair share for the Peninsula as well as jobs for the people of the Central Coast.

Three extra schools having been built in the last four years in the Region, over \$50 million has been spent on the Pacific Highway, \$7.9 million for the Woy Woy interchange and car park and have also upgraded Woy Woy and Gosford Hospitals.

Fought for the \$24.7 million funding for the long term development of the Australian Flora Springtime Festival at Mt Penang.

My personal plan for Peats is:

- Continue to help to make our community a safer place;
- Promoting the region as centre for investment for industry and so

create local jobs;

- Promote regional tourism and more local jobs; and
- Fight to expand services in our area.

The work that I have started is not yet finished, much more is to be done.

I have worked hard over the past four years to get results for the region, and will continue to do so if re-elected.

## Jobs plan

**The Carr Labor Government's "Jobs for the Future" plan has been strongly endorsed by Member for Peats Marie Andrews.**

"Since Labor came to office in NSW, the unemployment rate has dropped by almost two per cent," said Ms Andrews.

"This equates to 195,000 jobs being created in NSW since 1995.

"Business investment in rural NSW is up \$12 billion since 1995, adding 37,000 new jobs to country towns.

## Support for new higher speed rail line

**Peninsula train commuters can expect a shorter and faster trip to Sydney by 2007.**

The new high-speed rail line will cost \$800 million dollars.

The trip between Hornsby and Warnervale will shorten by 40 km and 15 minutes.

Premier Bob Carr said the new line would straighten curves and provide bypasses for fast trains to travel between Sydney and Newcastle.

Sections of the existing line at



"The Carr Government will bring up to 350 new jobs to the region through six new initiatives in the next two years."

The Central Coast companies involved included Australian Shapemakers, Australian Panel Products, Forbio, Emeco Australia (NSW), Wier Engineering and FC Nichols (Wholesale).

"This figure will obviously grow in the coming year as the business realises the Central Coast is the place to relocate in NSW," she said.

Ms Andrews said: "Aluminium Shapemakers at Somersby is one

of the NSW companies benefiting from the policies of the Carr Labor Government." Aluminium Shapemakers had already, employed 12 full time staff.

"This figure is set to rise to 35 this year and 51 full time jobs by the third year of the company's operation.

"Labor plans to bring an extra 190 regional headquarters to the state, with NSW overtaking Singapore as a regional headquarters location in south-east Asia.

The plan includes 60,000 call centre jobs and 50,000 new tourism jobs.

the Hawkesbury River will take a straighter path.

Mr Carr said the nine trains an hour peak rate would increase to 12 with the new rail lines.

He said this translates to an extra 5000 seats between 7 am and 9 am each working weekday.

Currently, 30 percent of the coast's population commute to Sydney to work.

Transport Minister Carl Scully said the State Government will also upgrade trains for the benefit

of commuters.

The new line will probably run by the back of Woy Woy tip along the eastern side of Mullet Creek before rejoining the existing line near Brooklyn.

This means the new line would pass through some of Brisbane Water National Park.

Member for Peats Marie Andrews said this would mean a better train service to Sydney and should relieve a lot of congestion on the roads.

## DEMOCRATS: Geoff Preece For community participation

**Geoff Preece is standing for the seat of Peats as the Australian Democrats candidate.**

He has lived in the electorate for 20 years.

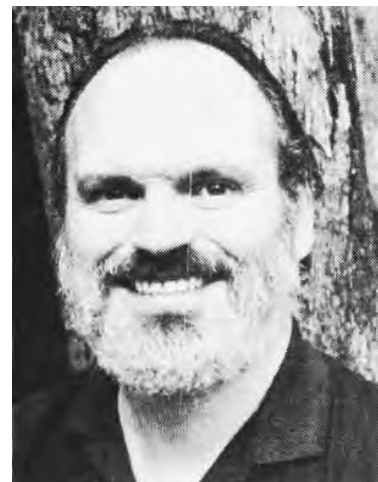
Mr Preece said that "this election should be about improving opportunities for community participation in decision making because they certainly are difficult to find right now".

He believes that "whether it is the drugs debate, education, the environment, law and order, asset sales or almost anything you can think of, it seems that policy is made by the few that lead whichever party is in power, the Coalition or Labor".

"There is very little broad discussion that has any ultimate meaning in the community." Mr Preece said: "That's why we get the nonsense that we get before election time.

"The Democrats would try to change this closed shop approach and try to create more meaningful participation in government.

"The local communities should determine priorities."



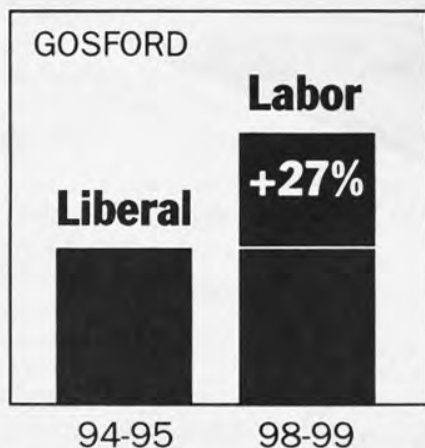
**AUSTRALIAN DEMOCRATS**

**Vote 1**

**Geoff Preece**

**It makes sense to vote Democrat**

## The truth about health funding



**Barry Cohen**  
for Gosford  
☎4324 6999



**Marie Andrews MP**  
for Peats  
☎4342 4122

**The Central Coast Labor Team**





## LIBERAL: Debra Wales

## NSW Election 1999

# I'm passionate about my local community

### I'm passionate about my local community!

I've lived on the Peninsula for the last 18 years and my family has owned property in the area for three generations.

This is the community that I have chosen to raise my family, earn a living and see grow and prosper.

In 1995 I started the Mainstreet Program in Ettalong Beach after a community meeting of local residents and businesses.

The town was in decline, crime was ever present and civic pride was diminishing.

Those of you who remember Ettalong Beach back then can see how the Ettalong community has changed, become safer and prospered these last four years.

This was achieved through a partnership between the community, business and local government.

This is a valuable lesson that I have learnt over the last five years.

I also learnt that there are many good and hardworking people in our community from all walks of life and of all political persuasions.

Each had a common goal which I shared ... to see the local community come together, progress and prosper.

However, it was with considerable regret that the process was not encouraged at State Government level.

It was obvious that many of the basic things in our community such as law and order, youth facilities, services for the elderly, roads and capital infrastructure were sadly lacking through lack of adequate representation in the State Parliament.

It was for these reasons and my belief that the community wanted something better that I chose to

enter the political arena as the Liberal Candidate for the Seat of Peats.

I was encouraged by many in the community who felt that they required someone with drive, determination and a proven track record of achievement.

I believe that I possess these qualities and the ability to make a difference in our local community.

Our community is made up of a diverse range of people from all age groups, walks of life and cultural backgrounds.

All have special needs but share some common concerns.

Over the last 6 months it has become obvious from our senior citizens that have spoken to me that one of the major issues on the Peninsula is the lack of police numbers and police resources.

They like many others do not feel safe any more.

From personal experience, we don't feel safe in our own homes, our elderly cannot leave their doors open during the day much less at night, our town streets are unsafe and crime is on the increase from petty theft to armed holdups.

Unfortunately, despite what is claimed by the current State Government, the reduction in police numbers on the Peninsula and the steady erosion of services and resources has left all of us at risk over the last four years.

We have no detectives at Woy Woy Police Station, response times are inadequate because our police are under resourced and under staffed, services have been centralised at Gosford to the detriment of the Peninsula.

We have few if any police on the beat and our so called "police shop front" at Umina Beach is completely unmanned.



A Coalition Government is committed to reversing and rectifying the erosion of these services.

Over the next four years, a vide 2,500 extra police across the State including the Peninsula, put the detectives back at Woy Woy Police Station where they should always have been, put police back on the streets including our town centres of Umina Beach, Ettalong Beach and Woy Woy and provide a regular police presence at the Umina Police "shop front" so that it becomes a real police station ... not a "Claytons" police station.

Many younger members of the community with families have also approached me with their concerns for their children.

Like them, I have two teenagers growing up in the area and I hold similar concerns as to their future.

That is why I have taken such a pro-active role as founding member of the Peninsula Community Forum (which was responsible for saving The Web Youth Drop In Centre) and a member of the Management Committee for the Police Citizens Youth Club (PCYC) at Umina Beach.

Both the PCYC and The Web have my full support.

A Coalition Government has committed to an additional \$50,000 each year to The Web to support its tireless youth worker Dion Richardson and his staff.

I will also be a strong advocate for the PCYC which is vital to providing a range of youth services on the Peninsula.

The current State Government has been lazy in both these areas.

Over 6 months of delays in funding for The Web by the current

State Government almost brought the youth facility to a close except for the intervention of the Peninsula Community Forum and the generosity of businesses, Council and service clubs.

And after nearly four months of inactivity by the Local Member in resolving issues at the PCYC, its opening has been delayed for months.

Yet others in our community have raised concerns about the proposed Woy Woy TAFE site at south Woy Woy.

We all remember when the current State Government recently sold the site and promised that the proceeds would be put back into education on the Peninsula.

To date we have seen no practical benefit from those proceeds and just to add insult to injury, the local community has foregone a modern educational facility for our young people.

These are but three of the major issues we face on the Peninsula.

However, they are closely linked.

With strong community based activities for our youth, decent education facilities and a fully resourced police service, many of the problems facing both our senior citizens and our younger community will gradually be resolved.

Just as with the small town of Ettalong Beach, this will only occur if we have a true community partnership.

This what I believe and this is what I want to bring to local politics as your Liberal Candidate.

Because, if we fail to work together as a close knit community, we will miss the wonderful opportunities that lay ahead of us in the next millennia.



The State Electoral Office was open for business in Woy Woy last week with both major parties doing brisk business at their card tables on the footpath outside.

## Nine nominate for Peats

**Nine candidates have nominated for election in the seat of Peats this Saturday.**

They are: Xiang Guo (Unity), Marie Andrews (Labor), Ian King (Australians Against Further Immigration), Jeffrey Prest (Pauline Hanson's One Nation), Sue Spencer (Christian Democratic Party- Fred Nile Group), Stephen Lacey (The Greens), Debra Wales (Liberal), Norm Purcival (Earthsavve) and Geoff Preece (Australian Democrats).

Polling booths will be open on the Peninsula between 8am and 6pm at: Booker Bay Pre-school, Bullion St Tea Rooms, Ettalong Primary School, Amenities Hall, IOOF Homes Centre, Woy Woy South Primary School, Umina Primary School, Patonga Progress Association Hall, Pearl Beach Fire Station, Umina High School, Uniting Church Hall, Umina, Woy Woy Primary School, Woy Woy Bay Community Hall, Woy Woy High School, and South Woy Woy Progress Association Hall.

## Woy Woy Road ... it's all downhill!

Why has Woy Woy Road deteriorated so much over the last four years?

**Because Mr Carr has broken his promise** of the last election that he would spend \$300 million on local roads.

Why should we and our families lives be at risk every time we get into a car?

Serious accidents occur almost weekly. Woy Woy Road is a prime example of what Mr Carr has let happen to all Central Coast roads.

**Action is what is needed, not more broken promises.** We need better roads, better facilities for our youth, and a return to a time when you could leave your doors open without fear.



Debra Wales is the only candidate for Peats in the forthcoming election who will **put people first.**

On 27th March give Debra a chance to do the job properly.

**LIBERALS**

Authorised by Lance Barrett, 34a Blackwall Road, Woy Woy



# School News

## Magazine produced

Ettalong Public School students produced an excellent school magazine in 1998.

Teacher and students worked hard to display some of the wonderful work they had produced throughout the school.

Some of the student and class contributions have been included for your enjoyment.

## Umina students in Nippers finals

Umina Public School had many students participate in the Nippers State Carnival at the end of February this year.

Great sportsmanship led to most of the students reaching the quarter and semi finals.

Three students excelled in reaching the finals: Alanna Smith 6th in beach sprint and 4th in flags; Nikki Shaw and Alanna Smith, 4th in beach relay; Sam Brown, 3rd (receiving the bronze medal) in beach flags.

The School also held its annual fund raising event on Friday, 5th March.

Students campaigned to sign up as many sponsors as possible for the Splashathon and had great fun making lots of money for the school at the same time.

## Shelley dominates

Umina High School has been celebrating the outstanding achievements of talented swimmer, Shelley Smith.

Shelley was awarded an Area Sports Blue in the sport of Swimming at the end of 1998.

At the Sydney North Area CHS Championships, she dominated the 16 years age group competing in six events, and was placed first in four events and third in another.

Shelley continued to represent with distinction throughout the year and her efforts were rewarded at the Australian Schools Championships in Melbourne where she won three gold medals and one bronze.

During these National Championships, Shelley displayed outstanding leadership and team spirit as she encouraged both younger and older swimmers around her.

## Umina High visits the US

In January this year, eleven Umina High School students were accompanied by Mr and Mrs Roffey on a trip to the west coast of USA.

Students who participated were: Krystie Hammond; David Hendriks; Shannon Marsh; Nicole McManus; Luke Naividi; Matthew Newell; Chris Newell; Brad Rowson; Rikki-Lea Sloan; Kristie Stebbing and Simon VanDerNeut.

The trip included a three day sightseeing tour of San Francisco (Fishermans Wharf, Limousins, Golden Gate Bridge, Alcatraz, Cable Cars, Macys, FAO Schwartz and Planet Hollywood!) - a beautiful city and great fun.

The students also enjoyed homestay with American families in Seattle.

Students attended school ("We thought this was a holiday!") went skiing, snowboarding and shopping.

Michael Jordan's retirement, Bill Gates' place, and the set for Sleepless in Seattle were also on the itinerary.

Many lasting friendships were begun!

On the way home, the itinerary took the students to Los Angles - Disneyland, Knotts Farm, Universal Studios, and ice-hockey - and Tijuana, Mexico.

The students were a great credit to their parents, schools and country and can't wait to go back.

## Carnival for Woy Woy

Woy Woy Public School has made a busy start to their sporting year.

On Friday, February 12, we held our annual Swimming Carnival at Woy Woy pool.

Over 230 students from Year 2 through to Year 6 participated in events.

There were some outstanding swims on the day and a squad of 38 swimmers was selected to represent us at the Zone Carnival.

Age champions were: Ryan Sainty (Junior Boys); Natalie Hart (Junior Girls); Martin Jeffery (11 Years boys); Lara Reed (11 Years Girls); Kalm Drewett (12/13 Years Boys); Charleen Jeffery (12/13 Girls).

The Champion House was Scott.

At the Zone Carnival held on Tuesday, March 2, Natalie Hart gained 4th placing, including a 15th

place in the 9 Years Relay.

Brad Hall won the 13 Years Boys 50 metre Freestyle.

Both Natalie and Brad will now compete in the Sydney North Area Carnival at the Warringah Aquatic Centre on Friday, March 19.

## Cricket representatives

A very successful start to the cricket season saw three of boys selected to represent Woy Woy Public School atthe Central Coast Trials: Alex Brown; Ryan Sainty and Hayden Scott.

At these Trials, Alex was successful in gaining a place in the team to participate in the Sydney North Trials.

The boys also played their first round match in the Brian Taber Shield, a State knockout competition, on March 5.

The match was against Pt Clare Public School and Woy Woy was victorious.

The boys dismissed Point Clare for 71 runs and then scored 72 runs for the loss of seven wickets.

Scott Lovie was the outstanding bowler taking 2-11 , while Alex Brown starred with the bat scoring 22 runs.

## Mini fete on Friday

The Year 5 and 6 students are busily organising for their annual mini fete, which will be held this Friday, March 26, from 1 pm to 2:45pm.

The students are organising such activities as knock-em downs, pick a number, goal shooting and football passing.

There will also be drink, craft and cake stalls and a chocolate wheel with great prizes donated by local businesses.

Everyone is invited to come along and join in the fun.

The fete will be held in our school grounds.

All money raised goes towards subsidising the major excursions for Year 5 to Myuna Bay and Year 6 to Canberra, as well as purchasing resources for the school.

## Big year for dance

Over 70 students are involved in our biggest Dance year yet.

There are three different dance groups including a boys group for the first time.

In May, the students will audition

for entry to the Central Coast Dance Festival which will be held from July 26 to August 6 at the Laycock Street Theatre.

## Most funds for Camp Quality

Woy Woy South Public School have won the honour of being the No. 1 fund raiser in the State for Camp Quality.

A representative from Golden Circle visited the school on March 19 to acknowledge this outstanding achievement and present an award to our school.

## New staff

Welcome to two new members of staff who have taken up executive positions at the school: Ms Sydenham, Assistant Principal; and, Ms Kovacevic, Executive Teacher.

## Prefects inducted

Our Prefects Induction was held on Friday, March 19.

Congratulations to our school leaders who have been doing an excellent job.

School Captains are Daniel Kerle and Amy McKnight; ViceCaptains Daniel Jackson and Serena Scott.

Our 1999 Prefects Stephanie Portelli; Blair Sarah Harvey; and, Gasanov.

## Outstanding HSC results

Woy Woy High School students again achieved some outstanding results at the HSC in 1998.

Dux of the Year was Kelly Potts who was placed in the Merit List for 4 Unit Mathematics.

Peter McGreal was placed in the top 10% in 2 Unit General English and Maths in Society.

Karina Reilly came in the top 20% in English, Mathematics, Business Studies and PD/H/PE.

Leonie Wiggins achieved the a place in the top 10% in Mathematics, Business Studies and Accounting.

Over 20% of our students accepted offers to University.

Other students achieved results which enabled them to pursue their chosen careers as follows: Tanya Conquest, Electronics Engineering at Canberra TAFE; Alison Mitchell and Kate Hindmarch, Travel and tourism at Gosford Business College; Kate Hummelstadt, Office Administration at the Gosford Business College; Jason Millard, Accountancy; Kristy Bullen, teacher training at the Central Coast University Campus.

Exchange with Japan While the Year 12 students were anxiously awaiting their HSC results, 10 students participated in student exchange programs to Japan.

Megan Wicks represented Woy Woy High School on the annual NaSCa sponsored trip.

Woy Woy High had already

hosted 22 homestay students from Japan in August as part of this program, and Megan and her family had hosted one of these students.

In return, Megan spent two weeks in homestay in Tokyo, attending Nagarema High School with her host sister and being taken shopping and sightseeing by her host family.

Nine other students spent five weeks on the LABO exchange program.

Earlier in the year some of our students had hosted some Japanese students who visited us on the LABO program Our Students could participate in this program partly through the sponsorship of the NSW Department of Education.

Training students Luke Johnston and Michelle Machon had homestay in Tokyo.

The remaining seven students had homestay on the island of Kyushu.

These students were: Neil Commins; Sarah Walkley; Jordana Bruce; Shay Jewel; Melissa Varley; Kylie Henderson and Brooke Preston.

The students had a wonderful time and learning about the Japanese culture through first hand experience.

They were also given the opportunity to study and use the Japanese language first hand and make new friends.

## Training for student leaders

The Student Representative Council had a leadership training day at the Ocean Beach Surf Club on February 4.

The students were trained by Ms Murphy, Head Teacher Welfare, and the two SRC co-ordinators, Mr Murray and Ms Willingham.

The students developed their aims and set their targets for 1999.

A new format is being tried this year for the SRC meetings which includes monthly Year meetings to enable representatives to discuss school issues with their constituents.

School Captains for 1999 are: Jayson Yeo and Brooke Preston; Vice-Captains: Andrew Aispuru and Kim Batty.

The SRC representatives are: Marni Cashin, Lucas Kennedy and the Captains for Year 12; Amy Haddadi, Sarah McWilliam, David Murray, Dean Podmore, Lauren Robertson, Wayne Smith, Year 11 ; Lisa Francis, Carly Patrick, Andrew Podmore, Martin Webseter, Year 10; Matthew Arrura, Ben Crowson, Kim Honan, Charmaine Samsely, Year 9; and, Jamey Irwin and David Jenkins, Year 8.

Year 7 students will choose their representatives at the beginning of Term 2.

The first project that the SRC are working on is the provision of some picnic tables to go under the trees in the grassed area near G Block.

FREE CLASSIFIEDS

The first three lines for advertisements for private use are FREE. After that, the cost is only \$3.50 per line. Business rates are also attractive.

## From Ettalong Public School magazine

|  |                 |
|--|-----------------|
| Space is a very big place  | David W, 1S.    |
| Planets are all around us  | Kind            |
| As well as   | Young           |
| Comets, asteroids, meteors and meteorites  | Lovely          |
| Even the stars and sun are up there.   | Interesting     |
| Joel Coleman, 5T   | Exciting        |
| Space is Misty and filled with stars   | Kylie,2T        |
| All the planets including Mars   | Jumps           |
| Shooting stars, black holes that look fine   | Obedient        |
| All the planets add up to nine   | Seven years old |
| Cher Prater, 5T  | Honest          |
| If I had a pet T-Rex I would talk to him and work at school with him and take him on an aeroplane. | Josh,2T         |



## Cottage for the terminally ill and their carers

**Grevillea Cottage in Woy Woy is a place where those suffering, terminally ill with cancer and their carers can learn to relax and overcome the fears of the illness.**

Nurse Jan Dunlop says the beginning was stressful.

"The building of this facility was very stressful on us and intrusive on the neighbours," she said.

Caring for someone can be very stressful work and, each Tuesday, patients and their carers go to the

cottage where they follow a 12-week program involving stress management.

"The whole 12-week program is very stressful," said Jan.

"What we seek is to give strategies to help deal with (what is) a stressful time.

She said the response to the 'home like' Grevillea cottage, which has modern furniture, a kitchen, a rest room and two relaxation rooms, had been very positive.

"There has been a positive feed back from patients and their

carers.

"The 12-week program is very successful.

It helps to educate people suffering from cancer to deal with stress, so those who are suffering, don't be afraid to approach us." Grevillea Cottage started operation in May 1998.

Palliative Care provides the funding and there is zero cost to patients and their carers.

There is volunteer help for those who have transport troubles.

By Neil Wilson



### High school captains appointed

*Woy Woy High School captains, from left standing, Kim Batty (vice captain.); Jayson Yeo and Brooke Preston (captains). Seated, Andrew Aispara (vice-captain).*

## Extensions to Ettalong Bowling Club

**Ettalong Bowling Club has added extensions worth \$1.6 million.**

A large crowd gathered to watch the official opening, which preceded Ettalong's first match of the season.

Unfortunately, Ettalong lost 54-40 against Windale/Gateshead.

Royal NSW Bowling Association president Gordon Wicks officially opened the extensions.

The extensions include a new foyer, administration offices, a larger lounge area, bar and bistro and poker machine area.



## Chris returns from overseas rugby tour

**Woy Woy resident, Chris Comerford, has returned from a successful tour with the Australian schools Rugby Union team, which toured Canada and the UK over Christmas and the new year.**

Chris, 18, from Woy Woy Bay, was picked after outstanding performances playing for the North West Metropolitan team in the Combined High Schools championship at Wagga Wagga in June.

In October of last year, Chris played at a national level against New Zealand.

Chris had recently joined the Eastwood team in Sydney and plays for their junior team, the Colts.

Proud mother, Mrs Marian Comerford, said her son's first year with the Colts was a difficult one.

"He was still doing his HSC which made it a little harder," she said.

The Colts reached the final against Gordon only to lose in a narrow match.

Chris was delighted with his selection in the Australian squad of 30 for the eight-week tour.

"It is always a dream to play for your country," said Chris.

"It will be a tough tour, eight weeks is a long time, but I am looking forward to it."

"We should do well against the Canadians and the Welsh, but the English and the Scots have good teams," he said before the tour.

The tour also involved matches against county teams.

The Australians opened their tour in Canada with a win over the Canadian side 63 - 13 and remained unbeaten in their twelve

## REVIEWS

### Indian restaurant had relaxed atmosphere

**Gandhi Restaurant in Ettalong has a nice relaxed atmosphere.**

The music in the background wafts through the restaurant, setting the scene for a nice relaxed meal in the company of attentive staff.

Our party arrived late on a Wednesday night and started to order as the remaining customers left.

Although we were a little late, there was no sign from the staff that we were not welcome. We did not feel rushed.

By the end of the night we had met and been introduced to the owner AJ and waiter Dora. Their personalised service and interesting chat was not intrusive and was welcomed.

The waiter delivered our

Bombay Beef and Chicken Korma meals quickly and they tasted good.

The sauce on the food was exquisite and thick.

Although the meals appeared small at first, we found they satiated our hunger well, especially as they were served with a generous helping of rice.

Eaten with the delicious extras of Naan bread, papaddums and Tandoor Roti, we found our party of four could have taken a doggy bag home each. A word of warning - some may find medium hotness a little too spicy.

Just make sure your dog can handle the heat.

If you are unsure, try the mild.

AJ was kind enough to give us an extra course, 'on the House' of Butter Chicken.

The meals are well priced at

about \$11 each.

We found that spending about \$20 each was more than enough and with a bottle of red wine (I recommend Poet's Corner), it was an evening well spent.

Gandhi Restaurant also have a banquet special from Monday to Thursday nights, where you can eat as much as you like for only \$16.90 a head.

I do not know what the coloured mix of sweets on the counter is called, but AJ.

insisted that we try it after we had paid the bill. If AJ asks you to try it, I recommend that you do.

It seems to be some type of Indian traditional lolly. We found it to have a sweet taste, like peppermint flavoured candy that left a refreshing taste in the mouth. Thoroughly recommended.

Carl Spears

## Bold new cinema is worth a visit

**A visit to the new Cinema Paradiso at Ettalong has left one of this paper's reporters, Carl Spears, impressed.**

Australians were one of the first people to take on the innovation of cinematography late last century, and we continue to enjoy a night at the movies.

My partner and I are no exception and providing the movie is a good one, an entertaining time ensues.

Having decided to see Peter Weir's, The Truman Show, we were delighted to notice it at the new Cinema Paradiso.

Thank heavens.

Nice and close so no need to travel far.

The cinema is such a nice change from what one comes to expect that we would now gladly travel a longish distances to see a film at this cinema.

The cinema's well planned layout leads me to think of the decor and concepts of the old local cinema before the advent of the large chains.

I found the decor to be simple but refreshing and according to my personal taste, only occasionally mismatched in style.

The auditorium has well elevated rows, which means all can see the screen over the top of those in the row in front.

Private viewing boxes can be hired for that special occasion.

Another outstanding feature

includes a baby crying room where parents can take babies who do not wish to watch the movie, allowing others to enjoy the movie.

By the end of the movie, the only things to disappoint were the lack of fellow moviegoers for a Sunday night and a toilet door that refused to be locked easily.

However, the owners are to be congratulated.

This is a bold venture to which I thoroughly recommend a visit.

Rating for the cinema: four 1/2 stars out of five.

Oh, by the way, the movie was very enjoyable.

Postscript: The cinema has been closed temporarily due to a dispute with Gosford Council over building standards.

## Fishing News

**Some nice catches of bream and whiting are being reported in Paddy's Channel, Brickwharf Rd Channel and Ettalong.**

Most popular feeding time for these species would be the first three hours of the run up tide, the first two hours of the run out tide and the last two hours of the run out tide.

Most preferred baits being bloodworms, nippers and shelled prawns for whiting; pilchards, bottle squid and chicken gut for bream.

On the flathead scene, some very nice catches are being reported at Halftide Rocks, Ettalong and Paddy's Channel.

Preferred times to fish is the first two hours of the run up tide and the last two hours of the run out tide.

Most favourable baits are brined pilchards, white bait, mullet strips and live poddy mullet.

Lure fishermen may have left their run a little too late on the flathead, as flathead become very shy this time of year and tend to prefer natural baits over lures.

### Ocean report

Some very nice catches of snapper and morwong are being reported off Esmeralda, Boltons and The Valiant, better known as The Wreck.

Best baits are striped tuna, pilchards and prawns.

Most preferred fishing times would be early mornings or late afternoons.

Striped tuna, bonito and king fish are also running off Copacabana, Winnie Bay and MacMaster's Beach, one to three kilometres off shore.

Best baits are pilchards, spinning with Raider lures or half x quarters.

Trolling with pink skirted squid and Christmas tree lures at one to three knots also proves to be rewarding.

Large catches of dolphin fish are being reported around Broken Bay, wide around fish traps.

Preferred bait is cube pilchard unweighted, surface plugs and poppers.

That's all for now. Good fishing.  
**Jamie Pocock Jamie's Bait & Tackle WoyWoy**



# Ever wonder why computers are so expensive?

## So did we.

**That's why we created renewed computing.**

**You may not have heard of us yet, but if you have been asking the same questions, we have the answers.**

Rentworks Remarketing offers renewed, rebuilt from the ground up, brand name computers, with full warranty, at the best prices. Or choose one of our packages to get you started straight away.

Backed by ten years experience in the I.T rental and finance industry our service is top quality and guaranteed. So why buy new when you can recycle the highest quality equipment tailored specifically to your needs? You'll know you are doing the best for yourself, your family and the environment. Call us now to see what we can do for you.



### FREE SOFTWARE OFFER

**Free Microsoft Home Essentials including Microsoft Money to 1st 100 customers\***

\* Pentium packages only



### CALL TODAY

8am to 10 pm 7 days

**1800 333 122**

or order direct from our website  
**www.rentworks.com**

*Our friendly staff are ready to help you with any queries.*

**Bulk buyers welcome.**



EVERW004

### Home Study Package \$899

- Pentium 75
- 16MB RAM/540MB HD/CD-ROM
- 14" Colour monitor
- Windows 95

### Student Notebook Package \$769

- Brand name 486
- 8MG RAM 300MB HD
- New Lexmark Colour Printer 1100
- Upgrade to Pentium available

**Many other packages also available.**

**FREE HOME DELIVERY WITHIN 14 DAYS**

(CREDIT CARD ORDERS ONLY)



**\$899**



**\$769**

## Big changes are coming

Welcome to the first edition of the Peninsula News - the first paper for 25 years to give exclusive Peninsula coverage.

Over the past year, it has become more apparent that momentous events are happening on the Peninsula, all of which will have significant effects on our lives.

Some have received publicity: The redevelopment of the Ettalong Beach War Memorial Club, the fast ferry proposal and the new cinema at Ettalong.

Each of these represents a significant investment on the Peninsula as well as a major addition to the tourist facilities available here.

At the same time, Gosford Council is in the process of spending \$8 million on the Peninsula.

This includes money to be spent on street-scaping each of the town centres on the Peninsula, in providing a sporting complex at the Woy Woy pool, providing a youth facility in Osborne Avenue and in building a theatre and other community facilities at the MacMasters Rd community centre.

The way this money is spent and the design of the facilities will to a large extent define the character of the area.

As population pressures increase, the capacity of infrastructure provided by the council - roads, drains and waste disposal - will be tested to its limits.

Likewise, social issues including local employment, education, drugs and crime will need serious attention.

Of increasing importance will be planning controls, such as the proposed Woy Woy DCP, to ensure we are creating an environment which is in tune with the aspirations of the community.



*Street-scaping work in progress at Ettalong Beach*

Fortunately, the council seems increasingly willing to consult with residents.

Until now, there has been no real way to learn what is happening in our community - be it the big or the small.

The Peninsula News aims to inform the community of all vital developments, to provide a forum for discussion and to engender pride and involvement in our community.

To do this successfully, we need your support.

On page two, we describe the aims, values and mechanics of producing this newspaper in more detail.

SUPPORTED BY

**THE PENINSULA CHAMBER OF COMMERCE**  
Incorporated

**Incorporating the Chamber Newsletter**

**BRUCE KERR** REAL ESTATE



**on the move**