



# Meditation for International Women’s Day

**A community meditation will be held at 6:30am tomorrow at Ocean Beach Surf Club for International Women’s Day.**

Member for Gosford Ms Liesl Tesch said women of all ages were invited to attend.

The event will involve group meditation and reflections on breaking the bias, this year’s theme of International Women’s Day, followed by coffee and

refreshments, she said.

Ms Tesch said she aimed to unite women in the community and provide connections to people and one’s self at the event.

“I really encourage you all to try something new and come along to ‘the Sit’ so we can unite and celebrate women as well as discuss how we can break the bias.

“It is really important women in our community have an outlet to reflect and invest time in

themselves.

“It is also so crucial women are able to come together and think about those who paved the way for us and how we can pave the way for the future.

“Each of us, including men, have a responsibility to contribute to the progression of equality.

“Whether it is deliberate or not, it is undeniable that society’s bias against women makes it difficult for us to move ahead.

“When you couple this with the intersectionality across women, whether it be women living with a disability, queer women, older women or women of colour, the bias only increases.”

Ms Tesch said The Sit occurred every Saturday morning,

meditating together to end the week peacefully and start the weekend with a clear mind and outlook.

**SOURCE:**  
Media release, 28 Feb 2022  
Liesl Tesch, Member for Gosford

# The Peninsula avoids very intense rain

**The very intense rain experienced across much of Australia’s eastern seaboard seems to have avoided The Peninsula in the past two weeks.**

A total of 307mm was recorded in Umina in the 11 days between February 22 and March 4, the same total as fell in just five days between February 6 and 10 in 2020.

Last year, 318.4mm fell in five days between March 19 and 23.

In 2016, 329mm fell in the first six days of June.

“Umina appears to have missed the very high totals seen elsewhere on the Coast,” said local rainfall observer Mr Jim Morrison.

“Having said that, it is probable that parts of the Peninsula received higher levels than my

measurements.”

Even so, Mr Morrison said: “The rainfall at Umina in the last couple of weeks is significant.”

The February total of 283.5mm was the second highest in 18 years, beaten only by the 2020 total of 380.4mm.

In February two years ago, two days had falls of more than 78mm, where this year 78.0mm was recorded only on one day, March 3.

All other daily totals this year have been 41.5mm or less.

The 78mm fall ranks 25th highest daily rainfall over the last 18 years.

The highest daily total was 165mm recorded on the January 19, 2015.

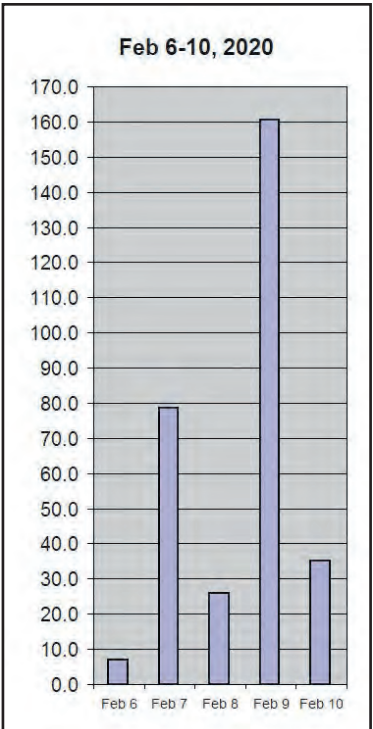
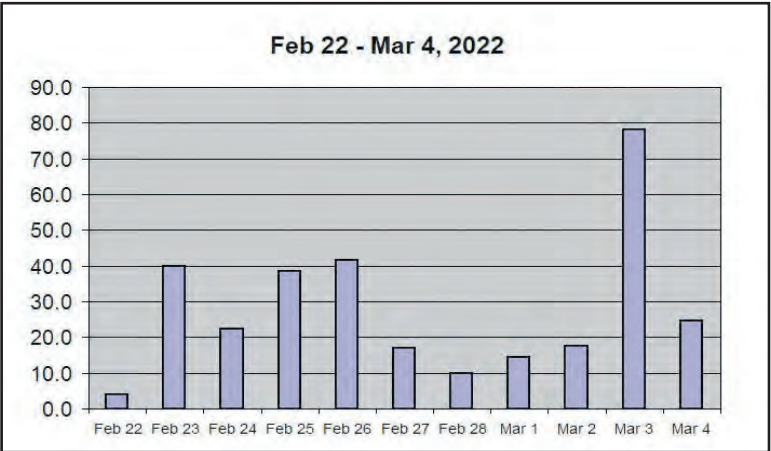
The figure of 161mm recorded on February 9, 2020, was second

highest.

Rainfall in the first four days of March totalled 134.5mm, already above the 18-year median of 130mm for the month, with the March average being 165mm.

Mr Morrison said: “Rainfall is measured and recorded daily at 9am and includes rain that fell in the previous 24 hours.”

**SOURCE:**  
Spreadsheet, 4 Mar 2022  
Jim Morrison and Lachlan Mottlee, Umina



## For the Peninsula community

Only Peninsula advertising  
Only Peninsula News

## Comprehensive coverage

**Peninsula News aims to provide comprehensive, insightful and constructive reporting to give Peninsula residents the information they need to determine their own future as a community.**

Whether or not the Peninsula is part of an amalgamated municipality, our community of 40,000 has the population of an average local government area in NSW and faces the same challenges.

As founding honorary editor, this is the 23rd year I have taken on the responsibility for the news content of Peninsula News on behalf of the non-profit community group which owns it.

Peninsula News remains true to its tradition of supporting the Peninsula’s community identity.

It is a proud tradition that we are pleased to continue..

Mark Snell, 20 Feb 2022



Peninsula News **EXTRA**  
Be notified. SCAN here.



Next issue: **Monday, March 21**

Email: [contributions@peninsula.news](mailto:contributions@peninsula.news)



Peninsula News  
Community Access

Peninsula News is a fortnightly community newspaper for the Woy Woy Peninsula, owned by The Peninsula's Own News Service Inc, a local non-profit incorporated association. Its aims include providing a viable, non-partisan news medium and forum exclusively for the Peninsula and developing a strong sense of community on the Peninsula.

Editor: Mark Snell

editor@peninsula.news

Advertising: Frank Wiffen

advertising@peninsula.news

NEXT EDITION: Peninsula News 540

Deadline: Thursday, March 17

Publication date: Monday, March 21

CONTACT DETAILS

NEWS: contributions@peninsula.news

ADVERTISING: advertising@peninsula.news

PHONE: 4342 5333 - Please leave a message

POSTAL ADDRESS: PO Box 585, Woy Woy NSW 2256

Please note: Peninsula News currently has no paid employees, and it may take a little time for us to get back to you. Our volunteers usually have other jobs and commitments, which compete for their time.

EMAIL ISSUES?

When emailing us, you will note that the domain name is PENINSULA.NEWS only. There is no .com or .com.au. If your email bounces or does not appear to have reached us, please check the address and try again. If this still does not work, try our old fallback address or call us by phone and leave a message.

Fallback email address: editor@peninsulanews.asn.au

Editorial policy and guidelines

At its heart, Peninsula News is a community effort.

It welcomes and relies on the contributions provided voluntarily and at no cost by local organisations, groups and residents.

The newspaper aims to be accessible to the community - both through making its columns accessible to community groups and by having copies available in accessible locations, including through its website.

The following policies and guidelines are designed to support the aims and standards of the newspaper.

Locality

The newspaper's editorial policy reflects a desire to reinforce the Peninsula's sense of community.

To qualify for publication, articles must have specific relevance to the Peninsula. For example, they must be about activities or events happening on the Peninsula or be organised by or involving Peninsula people.

The newspaper is not regional or national in nature, so regional or national issues will not be canvassed except as they affect the Peninsula.

Regional sports will only be covered from the perspective of Peninsula clubs. Regional plans will only be aired in the context of their ramifications for the Peninsula.

Peninsula News aims to be inclusive of as much of the Peninsula community as possible.

Readability

To ensure that the newspaper serves its purpose, it must be readable and represent the interests and activities of the community in its content.

Contributions to the paper are edited to consistent standards of readability. Guidelines are available for intending contributors.

All items will be dated. They must contain the name of the author to whom the contribution may be attributed, with their first name spelt out, along with their suburb or organisation. Anonymous contributions will not be accepted.

Forum letters

The Forum section provides the opportunity for readers to express their views on any aspect of Peninsula community life, with the aim of reflecting the community's diversity of opinion.

Nevertheless, letters may be edited for readability, including for length, spelling and grammar, and to avoid legal liability on the part of the newspaper, or they may be declined altogether.

Contributors are asked to keep their

contributions to the matter at hand, and to focus on the issues and not abuse or insult others.

Other than in the case of holding public figures to account, criticism of others (as opposed to criticism of particular opinions) is unlikely to be published in the interests of facilitating the expression of a diversity of views.

All letter writers need to supply name, address and contact details. Only name and suburb will be published.

Contributors who do not wish the wording of their letter to be changed at all should make a note to this effect when submitting their letter. In some cases, this may result in the letter not being published.

Corrections

We try to be as accurate as possible. However, mistakes can still slip through.

If you believe we have got something wrong, whether an error of fact or interpretation, we ask that you write to us by email with details for publication. These corrections may appear as Forum letters or as news items and should conform to our requirements for news and Forum contributions.

Source lines

Peninsula News includes "source lines" at the end of each article which aim to provide readers with information about where and how we came across the information, so that they might judge for themselves the veracity of what they are reading.

It should not be assumed that the article is a verbatim reproduction of the source. Similarly, it should not be assumed that any reporter listed is necessarily responsible for writing the whole news item. Source lines are not by-lines.

Often articles come from a number of sources. They are edited for readability and reader interest and given different headings, and consequently can be expressed quite differently from the source material.

Peninsula News usually receives its information in three ways: It is sent to us by someone wanting to promote their activities; it is sent to us in response to our inquiries; or it comes from a newsletter or other document to which we have access.

Sometimes we may interview a person or report what they said at a meeting.

The following descriptions are used:

Media Release - unsolicited contributions.

Media Statement - sent in response to our questions.

Website or Social Media - information published online.

Newsletter or Report - published in print or online.

Interview or Meeting - statements recorded by a reporter.

Forum contributions may be: Email if sent electronically and Letter if written on paper.

Lions club hosts a free sausage sizzle

Woy Woy Peninsula Lions Club is one of the first Lions Clubs nationally to take advantage the offer of a paint retailer to host its sausage sizzles.

The club offered a free sausage sizzle at the Haymes Paint West Gosford store and in return a \$500 donation.

District governor Ms Glenys Francis and the Australian Lions Foundation's grants chairperson Mr Ken Hallam were pictured receiving the cheque from West Gosford Haymes Paint store manager Nick.

Behind them are Woy Woy club members including Mr Ian Taylor and club president Mr Greg Head.

Across Australia, in addition to reimbursing Lions for sausage sizzle costs, Haymes has made a donation of \$25,500 to the Australian Lions Foundation disaster relief fund.

The fund provides Lions Clubs across Australia with the ability to quickly react in times of need.

"Every dollar donated to Australian Lions Foundation goes



towards helping Lions Clubs support their communities in times of need and through Lions' incredible network of over 1200 clubs you can be confident it's distributed quickly and to those who need it most," said Mr Hallam.

"Over \$4.6 million was raised and distributed in the recent Australian Lions Foundation National Bushfire Appeal.

"But the support from Lions did

not stop there.

"Over the past two years, even through a health pandemic, Lions volunteers have continued to support those affected and are focusing on helping communities rebuild."

To make a donation online, visit <https://alf.org.au>.

SOURCE: Media release, 25 Feb 2022  
Sari-Elle Kraemer, Alpha Consulting

Dementia cafe to be held next Monday

The Rotary Club of Brisbane Water will hold its next Dementia Cafe morning on Monday, March 14.

"The cafe is designed to be a safe and welcoming social get-together where people living with dementia and their carers can continue to be connected and engaged," said club president Ms Cherie Simpson.

"They can address the common feelings of isolation that are too often experienced as a result of a diagnosis of dementia.

"We continue to look at new and innovative ways to keep our participants engaged because we know being active, physically,

socially and mentally is good for the brain."

The dementia cafe is held on the second and fourth Monday of each month.

Ms Simpson said; "It was a great Valentine's Day at outdoor dementia cafe morning on February 14.

"Music, cake, chocolates and companionship were the order of the day."

For more information, contact Di on 0404 147 743 or Heather on 0414 446 177.

SOURCE: Newsletter, 3 Mar 2022  
Cherie Simpson, Rotary Brisbane Water

'Arboretum' exhibition

Pearl Beach artist Ms Marijke Greenway will hold an "Arboretum Exhibition" in the Calyx building in the Royal Botanic Gardens in Sydney until Sunday, March 20.

This exhibition features works inspired by the trees, palms, ponds and wildlife of the Pearl Beach Arboretum.

"The artist has painted en plein air scenery inside the Arboretum - the strong trees, the colours and shapes, the fallen palm leaves that litter the arboretum floor, turning it pink," the exhibition notice reads.

The exhibition is free and open daily from 10am to 4pm.

SOURCE: Website, 23 Feb 2022  
Pearl Beach Progress Association

February ranks second in 18 years

February's rainfall total of 283.5mm was the second highest recorded on the Peninsula for the month in 18 years.

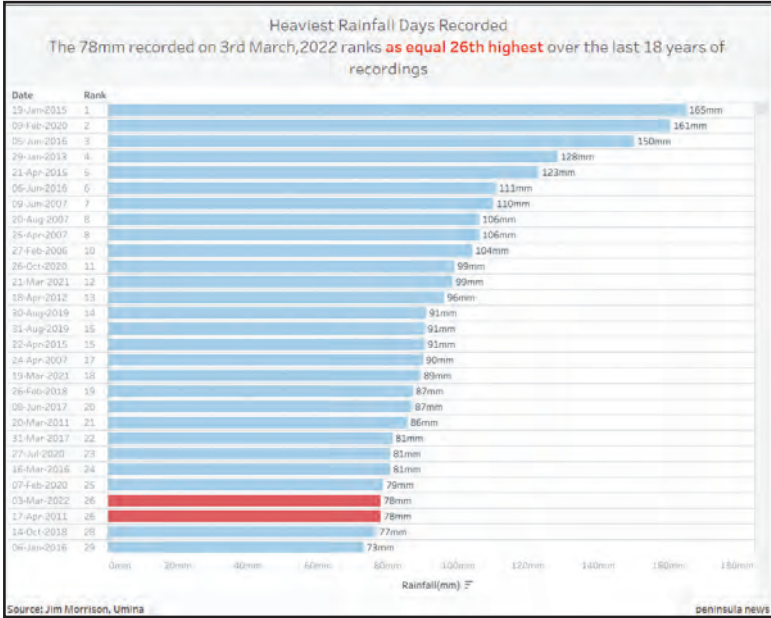
Rain was recorded on 20 days of the month.

The highest February rainfall was in 2020 with 380.4mm, according to figures supplied by Mr Jim Morrison of Umina.

February two years ago had the second highest daily rainfall in 18 years of 160mm, where this year the highest daily total was 41.5mm recorded on February 26.

The highest rainfall in the last two weeks was 78mm on March 3.

SOURCE: Spreadsheet, 4 Mar 2022  
Jim Morrison and Lachlan Mottlee, Umina





# Residents' association calls for limits to housing growth

The Peninsula Residents Association has called for limits to be placed on housing growth on the Peninsula in a 12-page submission to Central Coast Council's housing strategy.

The submission quotes the Council consultant's report, which suggests there are better options than building more houses on the Peninsula, which is already one of the largest population areas in the region.

The consultants stated that the Peninsula was "not near the major centres of employment or service delivery of Gosford, Tuggerah, Wyong and Erina, requiring populations to travel to access work and services."

"Opportunities to deliver housing closer to jobs and services is likely to offer benefits for future residents and the Local Government Area in general."

"This could include more housing within Gosford as the regional centre."

The Residents' Association said the Peninsula already lacked adequate infrastructure for its existing residents – particularly in relation to traffic and parking, flood management, shaded green open space, heat island mitigation and climate change preparedness generally.

Social infrastructure, including free meeting areas, was also lacking.

"Housing growth must be coordinated with delivery of this infrastructure," the association submitted.

"The strategy must promote high quality design of residential housing including resilience to natural disasters and climate change adaptation."

"Any housing strategy should include measures including liveability measures (which reflect community values), against which progress of the strategy can be monitored."

The Peninsula Residents' Association submission draws on resident input to the association's recent planning workshop.

It said the strategy should be "a meaningful document which has clear practical consequences, and focused on community well-being".

The submission called for a review of the Peninsula planning strategy in collaboration with the Peninsula community, and particularly its residents.

It asked for community-well being to be put ahead of economic value and financial incentive in the Housing Strategy.

The strategy should implement enforceable and enforced planning provisions that have credibility in the community.

The submission said that planning provisions relating to the Housing Strategy and its consequences should not to be treated as discretionary.

It called for a resident-led urban renewal on the Peninsula, assisted by the council.

SOURCE:  
Media release, 28 Feb 2022  
Julian Bowker, Peninsula Residents Association



## Two vessels removed by low loader

Two large capsized vessels were removed by low loader at Lions Park, Woy Woy, on Tuesday, March 1.

The boat ramp was closed to allow salvage operator Maritime

Safety Services to use a large crane to remove the two damaged boats from the water.

During the exercise, boat ramp users were redirected to ramps at Correa Bay Reserve, Brisbane

Water Dr Koolewong and Blackwall Rd at Blackwall.

SOURCE:  
Social media, 27 Feb 2022  
Central Coast Council  
Photo: Lynn Balfour

## Opera in the Arboretum set for Saturday

Tickets are still available for Opera in the Arboretum to be held at Pearl Beach next weekend.

The event will be held from 3pm on Saturday, March 12, at the Crommelin Native Arboretum in Pearl Beach.

Opera in the Arboretum is billed as an open-air, all-weather, picnic-style annual charity event hosted by the Rotary Club of Woy Woy.

"This community event brings together a star-studded line-up of artists to perform Opera's much loved arias, duets and ensembles in the coastal rainforest setting of the Crommelin Native Arboretum," said club president Ms Julie Jones.

Singers this year will include

tenor Mr Rosario La Spina, soprano Ms Jane Ede, baritone Mr Jose Carbo and soprano Ms Clarissa Spata performing arias and duets from La Boheme (Puccini), Marriage of Figaro (Mozart), Pagliacci (Leoncavallo), along with favourites such as Un bel di, The Pearl Fishers Duet and Libiamo.

"After a two-year absence due to Covid-19, we look forward to our 15th Opera in the Arboretum charity event."

"Funds raised are distributed to deserving causes, charitable organisations and Rotary projects at home and abroad."

"Since the event's inception in 2005 hundreds of thousands of dollars have been raised for

deserving causes, charitable organisations and Rotary humanitarian projects."

Opera in the Arboretum is the major fund raiser for the Rotary Club of Woy Woy and "a chance to promote Rotary to the community", said club president Ms Julie Jones..

"Funds raised will allow our club to donate to various local organisations."

Ticket prices range from \$40 for high school students to \$85 for adults.

Entry to the arboretum will be from Opal Close, Pearl Beach.

SOURCE:  
Newsletter, 1 Mar 2022  
Julie Jones, Rotary Woy Woy

## Didge and dance group returns

Mingaletta Didge and Dance Group returns today, Monday, March 7, at 4pm.

The group runs every Monday from 4pm to 5:30pm during school terms.

It is among the free cultural activities for aboriginal children and families run at Mingaletta, 6 Sydney Ave, Umina Beach.

Aboriginal and Torres Strait Islander boys and girls are welcome.

For more information, contact Stevie-Leigh on 4352 7515 or email admin@mingalettaacc.com.au.

SOURCE:  
Social media, 3 Mar 2022  
Mingaletta ATSIC

Ms Shelly McGrath will be the Central Coast Greens candidate for Robertson in the upcoming Federal election.

"I'm excited to stand as a candidate for this election because the time for change is now."

"As Greens candidate for Robertson, my top priority is committing to action that fights the climate emergency."

"We have a comprehensive, costed, and deliverable plan based on science."



"I am motivated by our diverse and robust community."

"The Central Coast community

should have better access to housing, healthcare, and education."

"I will advocate for a better deal for our residents for these basic rights."

"I look forward to working with all people across the Robertson electorate."

"We need to ensure a more inclusive and equitable future for everyone on the Central Coast."

SOURCE:  
Media release, 27 Feb 2022  
Chantelle Baistow, Central Coast Greens



ARE YOU INTERESTED IN THE SPECTACULAR RETURNS WE ARE CURRENTLY ACHIEVING ON HOLIDAY RENTALS?

Call Accom Holiday Rentals  
Ettalong Beach Today on 4344 6152

ACCOM  
HOLIDAY RENTALS



# Pearl Beach call for complying development moratorium

**The Pearl Beach Environment Group is calling for a moratorium on “exempt and complying development” approvals at Pearl Beach.**

The move follows a meeting to discuss planning at Pearl Beach held by the group on Friday, February 25.

Ms Knaggs said the group wanted the moratorium “until the impacts of the 2008 codes

on residential areas with special character are reviewed”.

The group has started the petition “Calling on the NSW Government to Review the Exempt and Complying Development Codes SEPP 2008”, which can be found at <https://www.change.org/UrgentReviewNSWComplyingDevCodes>

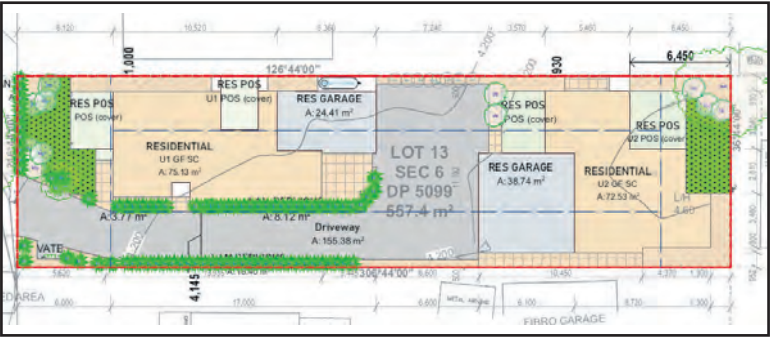
“My goal is to reach 100 signatures and I need more support,” she said.

It had been intended to discuss the Pearl Beach character statement at the meeting.

“Unfortunately we didn’t get enough time to discuss the Pearl beach character statements,” she said.

“We will have to have another workshop further down the track.”

**SOURCE:**  
**Media statement, 4 Mar 2022**  
**Mary Knaggs, Pearl Beach Environment Group**



# Application for detached dual occupancy

**An application has been received for a two-storey detached dual occupancy at 132 Paton St, Woy Woy.**

The two dwellings proposed would be located one behind the other with the front dwelling having three bedrooms, one downstairs and two upstairs, and the rear dwelling having one bedroom and a double garage.

The application was prepared by Clark Dowdle and Associates on behalf of the owner.

According to the the arborist's report, a total of nine trees are to be removed including one street tree.

occupancy development does not comply with the three metre measure.

“Notwithstanding the non-compliance, the site backs onto a six metre rear lane that provides suitable building separation that would alleviate overlooking open space to the adjoining premises to the rear, visual impacts and solar access impacts in accordance with the objectives of the setback clause.”

The private open space is about 50 square metres for each unit, which is about two thirds of what is required by the planning provisions (75 square metres).

Unarticulated wall length is greater than the mandated maximum of eight metres at 10.48 metres.

There are a number of non-compliances with planning provisions.

The lot size is 557.4 square metres which is well below the minimum area required by the planning provisions for a detached dual occupancy which is 800 sq metres.

However, the application argues that the planning outcome is much better than if the proposal had been for an attached dual occupancy for which the requirement is only 550 square metres.

The application claims the detached design achieves better “internal visual and acoustic privacy outcomes for the occupants”, solar access both on site and for neighbours and “enhanced building presentation and articulation” due to “the separation of the built form”.

It states there is greater opportunity for landscaping and “enhanced dwelling and land tenure delineation”.

The proposal is not compliant with the building envelope requirements with the 45 degree line cutting through the first floor at a point quite close to floor level.

The application describes this as a “minor departure”.

The front boundary setback is the only one that is compliant.

In attempting to justify a non-compliant rear setback of one metre, the application refers to a non-existent laneway.

“The rear one metre rear setback for the garage of the dual

The application claims that the proposal will achieve a floor space ratio of 0.47:1 which is under the minimum requirement of 0.5:1.

However, confusingly, the application goes on to ask for a variation, stating: “The additional floor space ratio will not alter the streetscape presentation to Palm St, and will not be evident when viewed from the neighbouring lots.”

Palm St is in a different suburb, adding to the impression that the application is simply a cut-and-paste from another application.

The application also contains a great deal of material discussing the socio-economic status of the Peninsula and Woy Woy in particular.

It quotes the Central Coast Council’s Alternative Housing Strategy background report saying that it “outlines there is a relatively low supply of small adaptable units that are more affordable to most low income households as well as to the upper 25 per cent of very low income households for lower priced accommodation”.

The status of the application is currently listed on the council’s website as “Notification-Advertising” and is therefore open for written submissions.

No closing date is given on the website.

**SOURCE:**  
**DA Tracker, 4 Mar 2022**  
**DA157/2022, Central Coast Council**



# Townhouse proposal justified as affordable housing

**Threetwo-storeytownhouses will be built at 167 Ocean View Rd, Ettalong Beach, in a “gunbarrel” layout if a development application received by Central Coast Council is approved.**

The application, prepared by Clark Dowdle and Associates for the owners, claims: “The multi-dwelling development has been considered as a collection of townhouses to provide modern, simple, sustainable and comfortable urban living for singles and couples.”

The lot size of 670 square metres is well below the planning requirement of 750 square metres for a multi-dwelling development.

According to the application, other non compliances include setbacks, building envelope, building articulation and private open space requirements.

According to an arborist’s report, all 10 existing trees on the site would be removed but two street trees would be retained.

The “Clause 4.6 request” for a variation of the development standards states that the area is one of relative socio-economic disadvantage.

According to the application, only 16 per cent of Australians are worse off than those living in



Blackwall.

“Subsequently (sic), smaller dwellings are sought for lower rental or affordable housing options within this lower socio-economic area.

“The proposal to large degree has been prepared to cater for smaller self-contained dwellings that are considered more affordable within the Blackwall and Woy Woy-Umina Peninsula area.

“The cost of purchase or rental of a dual occupancy dwelling (compared) to a smaller townhouse would be substantial when presented to the housing market in this area.”

However, the application does not provide proposed sale prices to enable the claim of affordability to be tested.

Addressing the requirement for a “variety of housing choice”, the application notes that the fact that all units are three bedroom which is considered “acceptable given

the scale of the development”.

The application also quotes part of a statement by former Central Coast Council planning director Mr Scott Cox which described the “conundrum” involved with trying to balance the need for medium-density housing with the desired character statement for the Blackwall area.

The quote has been taken out of context by the consultants.

Part of Mr Cox’s statement has been left out which refers to mitigating factors which do not apply in this case.

The status of application is “Notification-Advertising” according to the council website and is therefore open for written submissions.

No closing date is given on the council’s planning portal.

**SOURCE:**  
**DA Tracker, 2 Mar 2022**  
**DA 223/2022, Central Coast Council**

# Association supports early say on rezonings

**The Peninsula Residents Association has supported proposed changes to rezoning processes that would enable the community to have an early say about rezoning proposals.**

Association secretary Mr Julian Bowker said the association supported changes which “ensure public comments are received before the council makes any assessment of the merits of a rezoning application”.

The association expressed its support for the changes in a submission to the Department of Planning and Environment, which had floated a “New approach to rezonings”.

“We also support the removal of

the council from the sponsorship of rezoning applications, other than on its own behalf,” said Mr Bowker.

“The council should not be placed in a position of being both advocate and regulator, particularly of private proposals - a recipe for conflicts of interest.

“While we do not oppose the requirement for pre-lodgement meetings, the minutes of these meetings should be exhibited with the other rezoning documents.

“The current process leaves the community faced with a fait accompli where, once the council and the local planning panel have taken a position, it is almost impossible to have community submissions considered with procedural fairness.

“The new approach to rezoning should be accompanied with provisions for far greater integrity in the planning system.

“Law and order in planning requires a clear expectation of the consistent application of the law to all citizens, without favour - as it does elsewhere in our Australian democracy.

“And it requires workable means to achieve it.

“Variations from planning provisions in the interests of ‘better outcomes’ will not satisfy this requirement unless those outcomes are specified in measurable terms.”

**SOURCE:**  
**Media release, 28 Feb 2022**  
**Julian Bowker, Peninsula Residents Association**



# Boardwalk collapses

The boardwalk in the Crommelin Native Arboretum at Pearl Beach has collapsed due to a “wash-away”.

It was a result of “a huge amount of water through our wetland after being dry for so long,” said Arboretum secretary Ms Mary Knaggs.

“The Arboretum has been in discussions with Council to completely replace the boardwalk and another bridge for several years,” she said.

She asked patrons to use track along the Arboretum’s western boundary, while the boardwalk was out of action.

SOURCE:  
Social media, 4 Mar-2022  
Mary Knaggs, Pearl Beach Arboretum



# Roads closed over three days

Peninsula roads were closed by Central Coast Council between March 2 and 4.

Brick Wharf Rd and Oval Ave, Woy Woy, were closed for the three days, as were Sea St and Lovell Rd, Umina.

Shephard St, Umina, was also closed on March 2 and 3.

Veron Rd, Umina, was listed as “open, however there is water over road” on March 2 and 3, but closed between Ocean Beach Rd and Sea St on March 4.

Residents were asked to take extra care, obey all signage and never walk, ride or drive through a flooded road.

They were asked to stay inside if possible during heavy rain.

“If you need to drive anywhere please take extra care on our roads as there has been a lot of rain in the past 24 hours with lots more expected throughout the day.”

SOURCE:  
Social media, 3 Mar 2022  
Central Coast Council



# ‘Keep out of the water’

Surf Life Saving Central Coast has urged the community to keep out of the water and away from danger, “including rock fishermen”.

Chief executive Mr Jon Harkness said patrolled beaches were closed due to the current surf warning and debris from coastal outlets flowing out across the entire Central Coast region,

“Our beaches are currently facing two major weather events, flooding and dangerous surf conditions which is making our beaches unsafe for swimming or surfing.

“The recent flooding events which are still occurring have opened all our coastal lagoons and

lake systems.

“This is causing large amounts of debris and bacteria to scatter across our beaches.

“The current dangerous conditions battering our coastline are causing beach erosion events. “This is due to the large surf and strong rip currents.

“The large surf conditions are also making our coastal rock shelves across the Central Coast incredibly dangerous to be on.

“In these conditions, freak waves can catch unsuspecting people off guard.”

SOURCE:  
Media release, 3 Mar 2022  
Jon Harkness, Surf Life Saving Central Coast

# High tide for Woy Woy

Central Coast Council issued a flood warning for low-lying streets in Woy Woy and the Woy Woy town centre with a high tide is expected for Brisbane Waters on March 3.

Tide heights of between 1.23 metres and 1.26 metres were predicted at Ettalong from February 28 to March 3.

“Streets will be passable,” the warning stated.

“However, you can expect to

see large amounts of water on the road surface.

“Please be mindful that this is salt water.

“Stay inside if possible.

“If you need to drive anywhere, take extra care on our roads as there has been a lot of rain in the past 24 hours with lots more expected throughout the day.”

SOURCE:  
Social media, 3 Mar 2022  
Central Coast Council

# Help clean up

The Umina Community Group is urging residents to clean up our beaches.

“Just 20 minutes and a bucket can help protect our birds and sea animals from deadly pollutants,” the group said in a social media post.

“If you are prepared to brave the rain, our beaches are in need of a clean up now.

SOURCE:  
Social media, 2 Mar 2022  
Umina Community Group

PEARL BEACH

15<sup>TH</sup> EVENT

Opera

IN THE Arboretum

ROSARIO LA SPINA

JANE EDE

JOSÉ CARBÓ

CLARISSA SPATA

SATURDAY 12 MARCH 2022  
3.00 – 5.30 pm

VENUE  
Crommelin Native Arboretum,  
Pearl Beach, Central Coast NSW

TICKETS  
Adult: \$85.00 / Senior: \$80.00  
10 or more tickets: \$75.00 each  
High school student: \$40.00  
Primary school student: Free

BYO  
Picnic, rug and chairs

BOOK NOW  
www.trybooking.com/BTEGA  
www.woywoyrotary.org.au  
f operainthearboretum

PRESENTED BY  
Rotary Club of Woy Woy Inc

Thank you to all our sponsors of this Rotary Club of Woy Woy charity event

PREMIER  
Central Coast Volkswagen

PLATINUM  
COAST REALTY  
Ettalong DIGGERS

GOLD  
Accom Holidays  
Everglades Country Club  
Kawai  
Pearl Beach Patonga Real Estate  
SILVER  
Bendigo Bank  
Priceline Pharmacy  
RetireAustralia

BRONZE  
Campbells Timber & Hardware  
Flowergirl Creations  
Jasmine Greens  
MOA Window Coverings  
Peninsular Village Nursing Home  
Seaspray Jewellery  
SpecSavers @ Deepwater  
Tonkin Drysdale Partners  
Workforce International



Health

## Cases decline by half

**Active coronavirus cases on the Peninsula have declined to below half of their peak in the middle of January.**

The total number of active cases in the 2256 and 2257 postcode areas was 593 on Saturday, March 5, according to the NSW Government covid data and statistics web page.

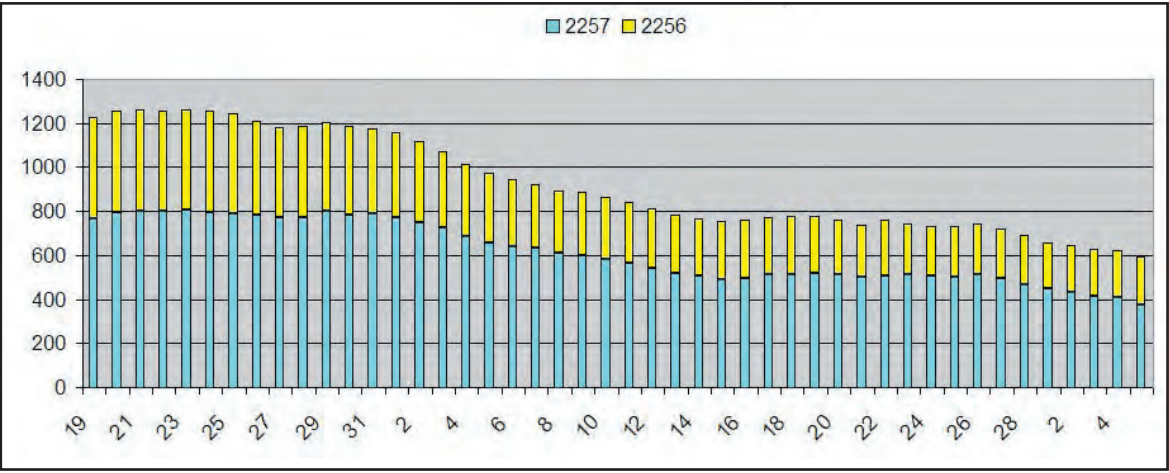
This compares figures of more

than 1250 active cases between January 20 and 24.

A total recorded since the start of the pandemic were 1938 in the 2256 postcode area and 3789 in the 2257 postcode area.

This represents about 12.8 per cent of the population.

**SOURCE:**  
Website, 6 Mar 2022  
Covid data and statistics,  
NSW Government



## Outbreak declared 'closed'

**The coronavirus outbreak at a Woy Woy aged care home has been officially declared closed.**

The outbreak at BlueWave Living was declared over on Friday, February 25.

"This is great news and a testament to all the team here who worked hard to minimise spread and worked extremely hard over

the last several weeks, at times in a very challenging environment."

"As we had moved to opening to visitors again some weeks ago, not much will change for now in terms of visiting.

"As Covid is still very prevalent in the community, current NSW health guidelines will be followed.

**SOURCE:**  
Social media, 25 Feb 2022  
Matt Downie, Blue Wave Living

## Celebrating her 105th birthday

**The Peninsula's oldest resident Ms Biddy Abraham has celebrated her 105th birthday.**

Ms Abraham lives at the Peninsula Villages aged care home.

Staff say that "she may be the oldest resident that calls, but she is

also one of the cheekiest and most fun-loving".

Her birthday celebration had "all the bells and whistles", including a rendition of "Happy Birthday" and a birthday cake.

**SOURCE:**  
Social media, 24 Feb 2022  
Colin Osborne, Peninsula Villages



Forum

## Plan for a liveable environment

**Look. I am not stupid, but might not have had the education some people have had.**

But when I see and read some of the development plans out there, I get a bit overwhelmed, when really it's pretty simple.

What many of us want for the Central Coast is as follows.

1. No high-rise, maybe OK for towns like Woy Woy and Gosford, four to five storeys.

2. More open green space.
3. Good setbacks for planting trees on the verges.
4. Biodiversity corridors where possible.
5. Good public transport.
6. No high-rise on coastal towns like Ettalong.
7. No clearing of virgin land for housing development.
8. A mixture of housing types, houses and villas, with all the mentioned points, taken into

- consideration.
9. Stop developers breaking planning rules, such as building height, floor space etc.
  10. More priority given to established native trees on a block of land that is to be developed.
- All this is necessary to be able to plan for a liveable and sustainable environment.
- It's not rocket science.

**SOURCE:**  
Email, 24 Feb 2022  
Michael Wilder, Woy Woy

## IPART should decline additional seven-year increase

**As a Central Coast house owner and rate payer, I am opposed to Council's application to maintain rates at the current IPART-approved increased levels for an additional seven years, ie 10 years in total to 2031.**

Council rates are costed on property land valuations determined by the Valuer General every few years.

The next Valuer-General valuations are due in 2022 or 2023.

It is obvious land values will skyrocket from the next Valuer-General valuations due to recent years of soaring prices of house and land sales.

Surely, this will mean Council will gain major rate income from the upcoming increased Valuer-General valuations which will pay for the financial mess amalgamation of the two Councils has created.

IPART should decline the additional seven years' increase in rates as proposed over and above the current increase over three years as approved by IPART.

The increase in revenue gained by Council by the upcoming land revaluations over the seven-year period in question will certainly negate any argument for any additional seven-year rate hike.

**SOURCE:**  
Email, 1 Mar 2022  
Peter Johnson, Booker Bay

## Land use conflict known long ago

**"The combination of agriculture, resource extraction, rural living and tourism can lead to land use conflict."**

This is a quote from the NSW Department of Planning and Environment Central Coast September 2014 discussion paper Your Future 2031.

The word "can" is a gross understatement.

There are plenty of examples of conflict which will increase, due to the addition of development into the equation, as per the Central Coast Council's draft housing strategy.

The conflict increases when another quote from the same paper is considered: "The food industry faces pressure to increase production, processing and distribution while facing challenges

from climate change."

Was the discussion paper of 2014 of any value?

Development of rural lands was identified as an issue in 1996.

Regional Environment Plan Number 8 is probably the document that has relevant advice.

The abuse of plans is rife.

**SOURCE:**  
Letter, 17 Feb 2022  
Norm Harris, Umina

## Plenty of off-leash beach

**With regards to a letter from Dianne Garland, (Peninsula News February 21), signs prohibiting dogs on Ettalong Beach have been in place for many years.**

About 200 metres from The Box around to Ocean Beach at Umina is about a kilometre of off-leash beach.

It is a larger area than the swimming designated area.

These new signs are just a reinforcement of the existing regulations.

People close to me are afraid of dogs.

My grand-daughter is allergic to dogs.

Why should they have to go elsewhere when the beach area is for family swimming?

Not all dog owners are responsible.

I have been on the beach numerous times when dogs have been let run rampant off-leash, regardless of who is on the beach.

Leave the swimming beach for young families to use in a safe and secure manner.

**SOURCE:**  
Email, 25 Feb 2022  
Tony Beacroft, Ettalong Beach

Public Notices

Car Boot Sale

Woy Woy Peninsula Lions Club

Mar 27

7am to 1pm

Great variety of stalls ~  
BBQ, Tea & Coffee.

Vendors Welcome ~ \$20 per car

Dunbar Road Car Park

NB stall sites not open until 6.00am

Cnr. Ocean Beach Road Woy Woy

Always Last Sunday  
(no events in December)

Enq: 0478 959 895

ABC "The Friends"

Support group for  
Public Broadcaster

Aims:  
Safeguard ABC's independence,  
adequate funding,  
high standards.

Meetings through the year +  
social mornings.

Well-known guest speakers

0400 213 514

www.fabcnsw.org.au

Peninsula News

Community Access

offers

Classified  
advertising  
at affordable  
rates

Contact us for details:  
4243 5333  
advertising@peninsula.news.





## Folk club concert was first in many months

**The Troubadour Folk Club concert on Saturday, March 5, was the first in many months.**

“The closure of music venues reshaped our summer,” said club president Mr Michael Fine.

“It was our largest concert in many years, certainly our largest indoors, filling the auditorium at the Everglades Country Club in a performance that sold out well before the weekend.”

Mr Fine said the highlight was the amazing and extremely polished performance by the five member Highly Strung Rock and Roll Orchestra and their guest performers.

“The family band showed they are one of the world’s most

professional and polished, with a commanding performance that covered a huge range of folk, traditional and modern standards,” he said.

“There was great support from floor spots, headed up by the Wild Women of Anywhere Beach, and bush poet Peter Mace, and locals Dennis Aubrey, Michael Fine and Trish Peart.

The next Troubadour concert on April 2 will feature Gordie Tentrees from the Yukon in Canada, our first overseas performer in more than two years, and the extraordinary Jane Germain, a singer and banjo/guitar player from the Central Coast.

**SOURCE:**  
Media release, 6 Mar 2022  
Michael Fine, Troubadour Folk Club

## New CWA member brings joy to branch

When Ms Gail Treweek joined the Woy Woy branch of the Country Women’s Association in 2019, it was something of an experiment for both Gail and the branch.

Gail joined after her group home in Woy Woy applied for National Disability Insurance Scheme funding for her to attend with her nurse, Ms Marina Clewett.

“From the very first day Gail came through the doors, she was welcomed with open arms and we have never looked back,” said branch president Ms Jane Bowtell.

“Shy at first and a little overwhelmed by the number of people and the constant chatter of craft and chat days, it did not take her long to warm to the branch and form friendships and bonds with other members.

“Gail helps choose colours of the yarn her nurse knits into beanies for the birthing kits in NSW Ambulance.

“When she attends monthly meetings she listens carefully and will often speak out or call for quiet when the president dings the bell.

“The noise immediately ceases thanks to Gail.

“She has baked for the cookery competition and her most recent achievement was to place third in branch for her sweet mustard pickles.

“She beamed with happiness.



“Members have happily attended her home to celebrate Christmas with her.

“Her family and staff at her care home always tell us that Gail has gained so much by joining the CWA and being part of the community.”

Ms Bowtell said: “Really, we think we are the lucky ones as she has brought a joyful innocence and her beautiful smile warms our hearts.

“She is such an integral part of our branch and we look forward to helping her celebrate her 70th birthday this year.”

**SOURCE:**  
Media release, 27 Feb 2022  
Jane Bowtell, CWA Woy Woy

## Annual meeting

**The Ettalong Beach Arts and Crafts Centre will hold its annual general meeting next Monday, March 14.**

It will be held at the centre in Kitchener Park, Ettalong, and will immediately follow a committee meeting held at 1pm.

“Every member is encouraged to come along to participate in the running of our centre,” said president Mr Peter Mulholland.

**SOURCE:**  
Social media, 27 Feb 2022  
Peter Mulholland, EBACC



**Liesl Tesch MP**  
Member for Gosford

## How can I help?

**Schools and education**

**Community Recognition Awards**

**Anniversary & birthday messages**

**Fair Trading**

**Hospitals and health**

**Main roads**

**Police and Emergency Services**

**Public housing**

**Trains and public transport**



📍 20 Blackwall Road, Woy Woy NSW 2256

@ Gosford@parliament.nsw.gov.au

☎ (02) 4342 4122





Sport



Eisteddfod

**Dancers from a local dance school will compete in the Sydney Eisteddfod after a two-year break due to the coronavirus pandemic.**

Students from Dancin' Mates in Umina have entered the eisteddfod regularly over the past 12 years.

Dance teacher Ms Bronwyn Carey-Russell said the students were excited to return to the live stage after two years of postponed events.

**SOURCE:**  
Media release, 28 Feb 2022  
Malcolm Bennett, Finch Co Agency

Relaxed rides around Brisbane Water

**Central Coast Bicycle Users Group will hold a relaxed ride around Brisbane Water on four Thursdays over the next two months.**

The next ride will start at Fishermen's Wharf in Woy Woy at 8am on Thursday, March 10, finishing at 11am.

The rides will also be held on March 24, April 7 and April 21.

The ride is described as a relaxed paced ride around Brisbane Water, starting and ending at Woy Woy.

It is 48 kilometres with an average pace of 19 to 22 km/h.

"This ride is perfect for those stepping up from easier rides, like the Woy Woy to Gosford Boomerang ride or other easy and easy-medium graded rides," said leader Mr Alan Corven.

"It is mostly on road shoulders

and shared paths, with some normal traffic roads, so you need to be comfortable cycling on the road with some passing traffic.

"Ride pace will be slower on the shared path sections, picking up on the road sections, with a few short hills."

Mr Corven said there would be coffee at Woy Woy upon completion "or somewhere else if a better option is suggested".

"Opt-out is possible at Gosford waterfront, about one kilometre to Gosford station, for a 10km shorter ride.

"This ride may be cancelled at short notice due to bad weather or ride leader issues."

For further information, phone Mr Corven on 0414 538 977.

**SOURCE:**  
Social media, 26 Feb 2022  
Alan Corven, CCBUG

Lachlan Cork is player of match in T20 final

**Southern Spirit was the winner of the 2021-22 Central Coast Cricket First Grade T20 Final played today against Northern Power at Tuggerah.**

Lachlan Cork was awarded the Jay Lenton Player of the Match award.

Southern Spirit scored 3/115 with Lachlan Cork scoring 46 not out and Daniel Friend 29.

Northern Power scored 6/114 by the compulsory closure with R Watson 2/13 and Lachlan Cork 2/27.

**SOURCE:**  
Social media, 28 Feb 2022  
Southern Spirit Cricket Club



Bridge club results

**Results of the Brisbane Water Bridge Club's Thursday Autumn Pairs competition on March-3 were:**

North-South:

1 Elaine Hume, Peter Hume 172.0 (57.33 per cent), 0.26 red points.

1 Barry Foster, Hope Tomlinson 172.0 (57.33), 0.26.

3 Christine Hadaway, Chris Hannan 163.0 (54.33), 0.15.

4 Felicity Fane, Heather Brown 140.0 (46.67).

5 Alison Mackey, Helen White 129.0 (43.00).

6 Judy Wulff, Marilyn Whigham 124.0 (41.33).

East-West results were:

1 Jaan Oitmaa, Sylvia Foster 169.0 (56.33), 0.30.

2 Jim Routledge, Tracey Dillon 163.0 (54.33), 0.21.

3 Ed Vaughan, Robin Vaughan 160.0 (53.33), 0.15.

4 Lynne Rainford, Hilary Owen 151.0 (50.33).

5 Susan McCall, Pamela Joseph 138.0 (46.00).

6 Anne Birt, Meryl Duke 119.0 (39.67).

Results of the Novice Teams Championships played on March 2 after two of six matches were:

1 Marcelle Goslin, Beryl Lowry, John Aldersley, Meryl Duke 76 Imps, 32.83 VPs, 2-0-0.

2 Linda Cunningham, Blair Glass, Ian Newton, Jo Ampherlaw 22, 24.04, 1-0-1.

3 John Drew, Robyn Serra, Edith Marshall, Tracey Dillon 10, 22.95, 1-0-1.

4 Warren Nicol, Marilyn Reid, Denyse Stephens, Fay Cole, 0, 20.00, 1-0-1.

5 Carolynne Mucharsky, Bob Lowry, Dieter Mucharsky, Graham Woof, -3, 19.02, 1-0-1.

6 Wendy Byrne, Roz Harvey, Connie Lewis, Judith Lambkin -105, 1.16, 0-0-2.

**SOURCE:**  
Website, 3 Mar 2022  
Brisbane Water Bridge Club

Peter Springett on road to recovery

**Bowls Central Coast secretary Mr Doug Rose has reported that Umina Beach Men's Bowling Club secretary Mr Peter Springett has had a heart attack.**

Mr Rose said it occurred on Wednesday, March 2.

"He has had a stent put in and feels good now, but may have to have more stents in the future," said Mr Rose.

He said Mr Springett, who is the zone's publicity officer, spent the night of March 3 in Gosford Hospital and was on the road to recovery.

Mr Rose said that in the meantime he or website manager



Mr Jim Phillips would deal with any publicity matters.

**SOURCE:**  
Social media, 3 Mar 2022  
Doug Rose, Bowls Central Coast

Education



A day full of twos

**Woy Woy South Public School raised \$588 for the Kindness Factory on Tworiffic Twosday Dress up Day held on 22-2-2022.**

The whole school participated in celebrating all things two.

Principal Mr Matt Barr encouraged students to "come dressed up in a tutu, two on a

clock, dice or cards, dress as twins or wear double clothing."

Students donated a gold coin donation to help support the Kindness Factory which is a non-profit organisation created by Kath Koschel.

**SOURCE:**  
Website, 25 Feb 2022  
Matt Barr, WWSPS

Educational pathways

**Woy Woy campus of Brisbane Water Secondary College has been selected to participate in Phase 2 of the Educational Pathways Program, according to campus principal Ms Rebecca Cooper.**

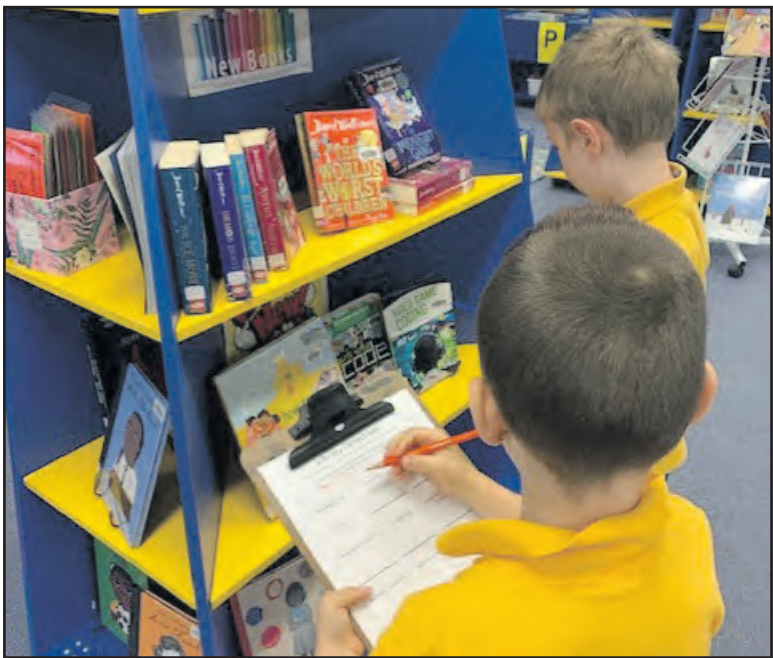
"The Educational Pathways Program is designed to improve education and career outcomes for students in NSW government high schools by introducing them to a range of vocational training and employment pathways," she said.

"The program complements existing careers education activities through the provision of additional resources.

"These include Engagement Officers, who work with the school to deliver engaging training and employment experiences.

"It is an exciting opportunity for our students," she said.

**SOURCE:**  
Social media, 3 Mar 2022  
Rebecca Cooper, BWSC Woy Woy



Detectives in the library

**Year 1T students were detectives during a library scavenger hunt, with the aim of students becoming more familiar with the library.**

They found browser cards, new books, and reference books.

All students, Years K-6, may borrow books during their library lesson.

**SOURCE:**  
Social media, 4 Mar 2022  
Jodie Campbell, Ettalong Public School