



After successive erosion events at Ocean Beach, and attempts to repair the pathways with sand renourishment, Central Coast Council has bowed to nature and is now building a set of stairs for access to the beach.

PHOTO: Mark Ellis

Residents want focus on community well-being

Residents have called for a focus on planning community well-being, according to Peninsula Residents Association secretary Mr Julian Bowker.

He said residents made it clear what they wanted for the Peninsula at a successful planning workshop held by the Peninsula Residents Association at Club Umina on Tuesday, February 15.

He said the workshop involved more than 40 residents.

There were presentations on current planning strategies and discussion of actions the community could take.

The evening included sessions which gave residents the opportunity to describe their vision for the future.

Mr Bowker said residents at the meeting appreciated the natural beauty of the area, the bushland and the waterways.

"They liked the relaxed, uncrowded village feel and the friendliness of the community," he said.

"Commonly they said they wanted the Peninsula to develop into leafy, greener suburbs with more shade trees and gardens.

"They said they wanted a planned and sustainable future with space for trees and open space, privacy and solar access, with affordable and creative well-designed homes.

"They looked to the Council and State Government to enforce better compliance and regulation of development to ensure the planning process achieved its aims.

"Residents said they wanted to retain the cottage housing village character, and to encourage a balance of mixed demographics, including low income earners and young families.

"They wanted to develop facilities for walking and cycling, taking advantage of the sandplain's flatness.

"Overall, they wanted a stronger, more self-reliant and inter-connected community, with a greater focus on community

well-being and not just economic value," Mr Bowker said.

"Many ideas were suggested at the forum of how to facilitate communication within the Peninsula and to have the Peninsula's voice heard."

Mr Bowker said all residents were encouraged to review and submit feedback on two key documents that were open for comment until the end of the month.

They were the Central Coast Council Local Housing Strategy up to 2036 and the State Government's Central Coast Regional Plan 2041, both available through the council's website yourvoiceourcoast.com.

Mr Bowker said it was vital that residents gave feedback on these plans.

"This is a great opportunity to have a say and help shape the Peninsula's future over the next 20 years."

SOURCE:
Media release, 20 Feb 2022
Julian Bowker, Peninsula Residents Association

IPART receives rates submissions

The Independent Pricing and Regulatory Tribunal will receive public submissions until March 7 about Central Coast Council's Special Rate Variation submission.

Submissions can be made via its website at ipart.nsw.gov.au.

Resident and ratepayer feedback made direct to Council is being provided to IPART.

Council's submission to IPART is to maintain rates at their current

increased levels for additional seven years, 10 years in total to 2031.

SOURCE:
Media release, 15 Feb 2022
Central Coast Council

Supporting the Peninsula

Only Peninsula advertising
Only Peninsula News

Comprehensive coverage

Peninsula News aims to provide comprehensive, insightful and constructive reporting to give Peninsula residents the information they need to determine their own future as a community.

Whether or not the Peninsula is part of an amalgamated municipality, our community of 40,000 has the population of an average local government area in NSW and faces the same challenges.

As founding honorary editor, this is the 23rd year I have taken on the responsibility for the news content of Peninsula News on behalf of the non-profit community group which owns it.

Peninsula News remains true to its tradition of supporting the Peninsula's community identity.

It is a proud tradition that we are pleased to continue..

Mark Snell, 20 Feb 2022



Peninsula News EXTRA!
Be notified. SCAN here.



Next issue: Monday, March 7

Email: contributions@peninsula.news

Peninsula News

Community Access

Peninsula News is a fortnightly community newspaper for the Woy Woy Peninsula, owned by The Peninsula's Own News Service Inc, a local non-profit incorporated association. Its aims include providing a viable, non-partisan news medium and forum exclusively for the Peninsula and developing a strong sense of community on the Peninsula.

Editor: Mark Snell
editor@peninsula.news

Advertising: Frank Wiffen
advertising@peninsula.news

NEXT EDITION: Peninsula News 539
Deadline: Thursday, March 3
Publication date: Monday, March 7

CONTACT DETAILS
NEWS: contributions@peninsula.news
ADVERTISING: advertising@peninsula.news
PHONE: 4342 5333 - Please leave a message
POSTAL ADDRESS: PO Box 585, Woy Woy NSW 2256

Please note: Peninsula News currently has no paid employees, and it may take a little time for us to get back to you. Our volunteers usually have other jobs and commitments, which compete for their time.

EMAIL ISSUES?

When emailing us, you will note that the domain name is PENINSULA.NEWS only. There is no .com or .com.au. If your email bounces or does not appear to have reached us, please check the address and try again. If this still does not work, try our old fallback address or call us by phone and leave a message.

Fallback email address: editor@peninsulanews.asn.au

Editorial policy and guidelines

At its heart, Peninsula News is a community effort.

It welcomes and relies on the contributions provided voluntarily and at no cost by local organisations, groups and residents.

The newspaper aims to be accessible to the community - both through making its columns accessible to community groups and by having copies available in accessible locations, including through its website.

The following policies and guidelines are designed to support the aims and standards of the newspaper.

Locality

The newspaper's editorial policy reflects a desire to reinforce the Peninsula's sense of community.

To qualify for publication, articles must have specific relevance to the Peninsula. For example, they must be about activities or events happening on the Peninsula or be organised by or involving Peninsula people.

The newspaper is not regional or national in nature, so regional or national issues will not be canvassed except as they affect the Peninsula.

Regional sports will only be covered from the perspective of Peninsula clubs. Regional plans will only be aired in the context of their ramifications for the Peninsula.

Peninsula News aims to be inclusive of as much of the Peninsula community as possible.

Readability

To ensure that the newspaper serves its purpose, it must be readable and represent the interests and activities of the community in its content.

Contributions to the paper are edited to consistent standards of readability. Guidelines are available for intending contributors.

All items will be dated. They must contain the name of the author to whom the contribution may be attributed, with their first name spelt out, along with their suburb or organisation. Anonymous contributions will not be accepted.

Forum letters

The Forum section provides the opportunity for readers to express their views on any aspect of Peninsula community life, with the aim of reflecting the community's diversity of opinion.

Nevertheless, letters may be edited for readability, including for length, spelling and grammar, and to avoid legal liability on the part of the newspaper, or they may be declined altogether.

Contributors are asked to keep their

contributions to the matter at hand, and to focus on the issues and not abuse or insult others.

Other than in the case of holding public figures to account, criticism of others (as opposed to criticism of particular opinions) is unlikely to be published in the interests of facilitating the expression of a diversity of views.

All letter writers need to supply name, address and contact details. Only name and suburb will be published.

Contributors who do not wish the wording of their letter to be changed at all should make a note to this effect when submitting their letter. In some cases, this may result in the letter not being published.

Corrections

We try to be as accurate as possible. However, mistakes can still slip through.

If you believe we have got something wrong, whether an error of fact or interpretation, we ask that you write to us by email with details for publication. These corrections may appear as Forum letters or as news items and should conform to our requirements for news and Forum contributions.

Source lines

Peninsula News includes "source lines" at the end of each article which aim to provide readers with information about where and how we came across the information, so that they might judge for themselves the veracity of what they are reading.

It should not be assumed that the article is a verbatim reproduction of the source. Similarly, it should not be assumed that any reporter listed is necessarily responsible for writing the whole news item. Source lines are not by-lines.

Often articles come from a number of sources. They are edited for readability and reader interest and given different headings, and consequently can be expressed quite differently from the source material.

Peninsula News usually receives its information in three ways: It is sent to us by someone wanting to promote their activities; it is sent to us in response to our inquiries; or it comes from a newsletter or other document to which we have access.

Sometimes we may interview a person or report what they said at a meeting.

The following descriptions are used:

Media Release - unsolicited contributions.

Media Statement - sent in response to our questions.

Website or Social Media - information published online.

Newsletter or Report - published in print or online.

Interview or Meeting - statements recorded by a reporter.

Forum contributions may be: **Email** if sent electronically and **Letter** if written on paper.

Mary Mac's volunteer nominated

Mary Mac's Place volunteer Ms Pam Ingram has been nominated for a Central Coast Council Australia Day award.

"Pam has volunteered at Mary Mac's for a while now," said project worker Ms Sally Liedberg.

"We absolutely love having her. "She is such a beautiful women and volunteers her time two days a week to help people in need."

Ms Liedberg also said Mary Mac's needed to restock its hamper supplies and was seeking

donations.

The centre has a list of items needed, which include two-minute noodles, mcrowave packet pasta, Big Eats cans, canned soup, microwave rice, sweet and savoury crackers, canned vegetables and long-life milk.

Donations can be dropped in to Mary Mac's at 100 Blackwall Rd, Woy Woy, Monday to Friday between 9am and 1pm.

SOURCE:
Social media, 15 Feb 2022
Sally Liedberg, Mary Mac's Place



Patonga Easter fete cancelled

This year's Patonga Easter Fete has been cancelled.

It is the third year in a row it has been cancelled due to the coronavirus.

The decision followed a town meeting on February 5.

SOURCE:
Social media, 6 Feb 2022
Patonga Community Hall

Women's day cabaret

The Naughty Noodle Fun Haus will hold its annual International Women's Day cabaret, Rayon Riot IV, in Ettalong on Saturday, March 12.

This year's line-up includes the Bindi Bosses, Vashti Hughes, Karlee Misi, Emma Maye Gibson (aka Betty Grumble), Corrie Hodson and Nina Angelo.

"It's all about fun and self-expression at the Noodle and we strongly encourage dress-ups, so adorn yourself as your favourite Shero," said creative director Ms Glitta Supernova.

Online bookings are required.

SOURCE:
Media release, 15 Feb 2022
Glitta Supernova, Naughty Noodle Fun Haus



Student leaders commissioned at opening school mass

St John the Baptist Catholic Primary School in Woy Woy celebrated its Opening School Mass on Friday, February 15.

The mass concluded with the Commissioning and Blessing of the 2022 Student Leadership Team.

Pictured are student leaders being commissioned and accepting this responsibility.

SOURCE:
Social media, 15 Feb 2022
SJB Catholic Primary School Woy Woy

Day of prayer

A World Day of Prayer Service will be held at Holy Apostles Anglican Church (previously St Luke's) in Blackwall Rd, Woy Woy, on March 4 from 10.30 am.

Everyone is welcome.

SOURCE:
Newsletter, 20 Feb 2022
St John the Baptist Catholic Church

Eight days of rain in two weeks

With eight days of rain in the past two weeks amounting to 47mm of rain, February's total rainfall stood at 108.6mm on Friday, February 18.

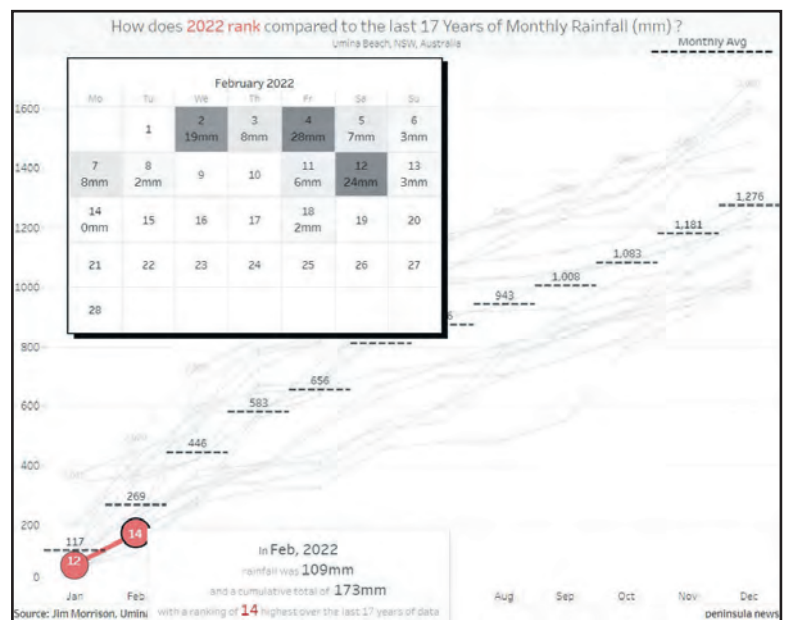
The heaviest fall was 23.5mm recorded on February 12, with the next highest fall being 8.4mm recorded on February 7.

There have been seven days when the rainfall has been greater than five millimetres.

The total is 46.4mm below the monthly average of 155mm.

The year-to-date rainfall total is 173.4mm, which is 37 per cent less than the end of February average of 275mm.

SOURCE:
Spreadsheet, 18 Feb 2022
Jim Morrison, Umina



‘Raise rental problem’ in housing discussion

Member for Gosford Ms Liesl Tesch has suggested residents use the council’s housing strategy discussion paper as an opportunity to discuss the lack of availability of rental properties.

“Locals are struggling and if we do not make an adequate plan, then we will only continue to price out our vulnerable community members,” she said.

“Price increases have put house purchase and rent prices well beyond people’s means.

“Sadly we are already seeing the repercussions of this, with a spike in homelessness.

“Unaffordable housing also forces our most vulnerable into even more precarious situations, especially those facing domestic violence, or those who are elderly with health issues and can no longer afford the skyrocketing rent prices.

“Years of underinvestment in social housing has made a bad situation worse, with growing waiting lists and insufficient rental assistance.”

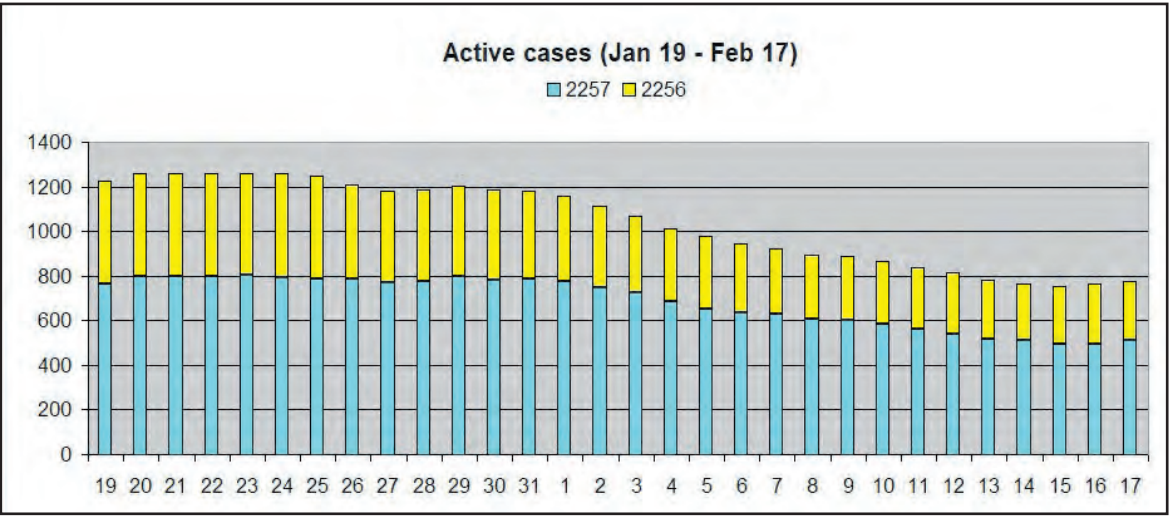
Ms Tesch said Central Coast Council had opened up the conversation on housing, with community consultation on the Central Coast Local Housing Strategy Discussion Paper now open.

The paper looks at options for accommodating the projected 41,500 additional homes needed by 2036.

“These are conversations that we really need to have.”

The Central Coast Local Housing Strategy Discussion Paper will be open for comment until February 28 and can be accessed here: <https://www.yourvoiceourcoast.com/housing>.

SOURCE:
Media release, 16 Feb 2022
Liesl Tesch, Member for Gosford



One in 10 have had coronavirus

More than 10 per cent of the Peninsula population has now had the coronavirus, according to figures displayed on the NSW Government “Covid data and statistics” web page.

According to the page, 3276 people (10.6 per cent) of the population of 30,793 in the 2257 postcode area has had the disease.

In the 2256 postcode area,

1677 people (10.2 per cent) of a population of 16310 have had the disease.

Active coronavirus case numbers on the Peninsula have dropped by more than 500 in the last four weeks.

Almost 300 of this reduction has occurred in the past fortnight.

The Peninsula had a total of 1262 cases on January 21, comprised of 801 cases in the 2257 postcode area and 461 in the 2256 postcode.

This had reduced to 774 cases on February 17, comprised of 510 cases in the 2257 postcode and 264 in 2256.

Two weeks previously, there were 1071 active cases on February 3, 297 more cases than on February 17.

Of this number, 725 cases were in the 2257 postcode area and 346 in the 2256 area.

SOURCE:
Website, 19 Feb 2022
Covid data and statistics,
NSW Government

Marine Rescue called during night training

Marine Rescue had night operations training on Brisbane Water on Saturday, February 19, when they received a call just before 8pm.

The skipper of a vessel in distress advised that their hire boat had run aground, and was stuck on an oyster lease .

Rescue Vessel Central Coast 21 was tasked to investigate the situation.

The crew of Mr David Stocks, Mr Dave Jesavelik and Ms Jane Shirriff found the local hire boat stuck on the oyster lease and decided that it would be too dangerous to pull the vessel off in the low tide .

With the high tide not due for another four hours, the rescue crew decided to return to base and deliver provisions using a U-Safe remote control life saving device, said media officer Mr Mitch Giles.

“The crew got some sandwiches, water and space blankets to send over to the people



on the distressed vessel.

“They drove the U-Safe to the vessel with its remote control.

“At around 11:15pm, the tide had risen enough to safely get a line to the distressed vessel and slowly pull them off the lease .

“This was done successfully and the tow back to the marina began.”

They arrived at the marina at around 12:30am and the rescue crew arrived back at its Point Clare base just after 1am.”

SOURCE:
Media release, 20 Feb 2022
Mitch Giles, Marine Rescue CC

A seat for the community garden, a book library for a cafe, a wedding arch and a raffle barrel have all been among the projects undertaken by the Umina Beach Men’s Shed in January.

The raffle barrel arrived, it looked like it had a hard life, said secretary Mr Vic Brown.

“But a helping hand of TLC and new coat of paint and it’s ready to start the year in style.”

He said a Umina cafe approached the Shed to make a Book Library.

“Several members have joined in the task of cutting, assembling, priming and painting and the metal area produced the mounting post.”

Mr Brown said some large, saw-milled cuts of timber, nicely seasoned were delivered to the Shed with a request for a garden seat to be created out of them for the Community Garden.

“The timber was cut and a solid garden seat and delivered it back



to the garden that morning.”

Following this, the father of a “bride to be” wanted some railway sleepers to be cut and bolted to meet his design for a “wedding archway”.

“The Dad was delighted with the finished job, providing the Shed with a worthwhile donation,” Mr

Brown said.

“The lads loaded Dad’s van with the items cut and finished ready for assembly, the same morning that they originally arrived.”

SOURCE:
Newsletter, 17 Feb 2022
Vic Brown, Umina
Beach Men’s Shed

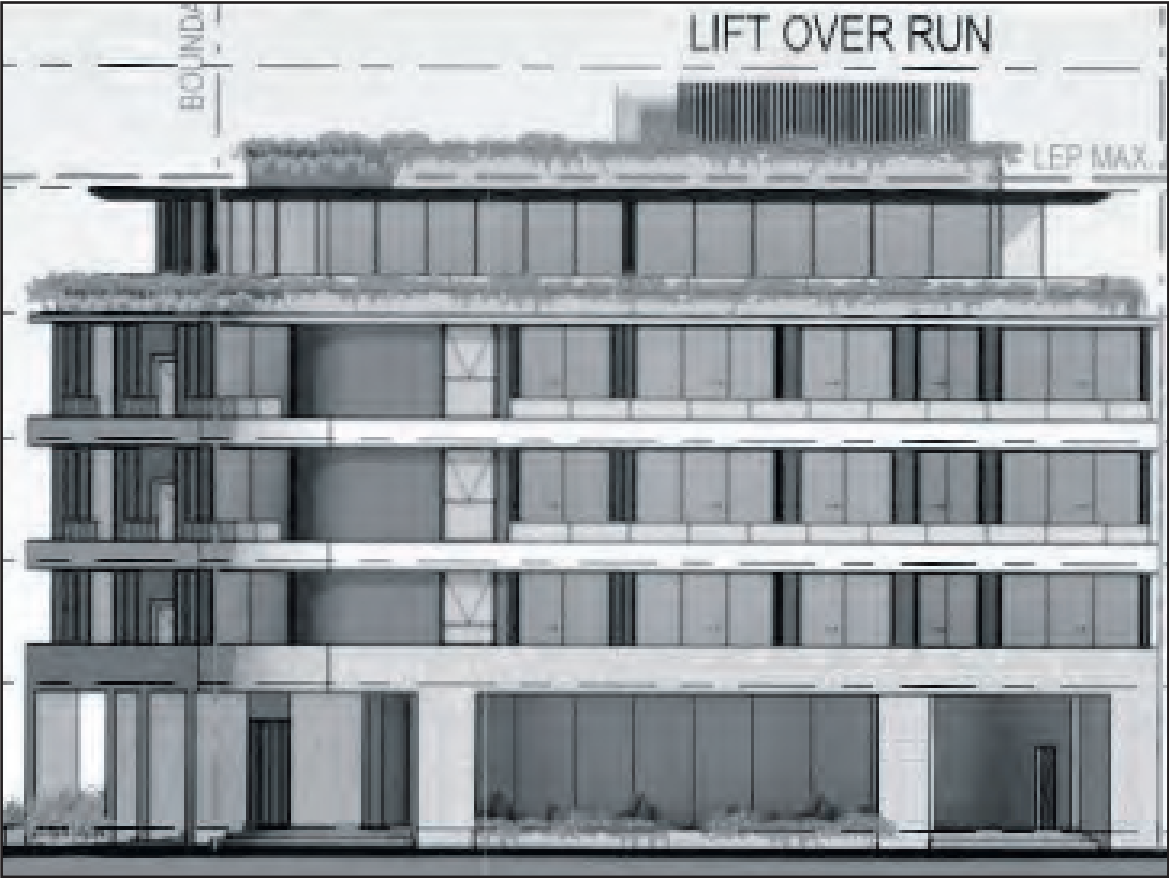


ARE YOU INTERESTED IN THE SPECTACULAR
RETURNS WE ARE CURRENTLY ACHIEVING ON
HOLIDAY RENTALS?

Call Accom Holiday Rentals
Ettalong Beach Today on 4344 6152

ACCOM
HOLIDAY RENTALS

Planning



Five-storey shop-top housing: ‘design merit’ in ‘key location’

A five-storey shop-top housing development application has been submitted for 275 Ocean View Rd, Ettalong Beach.

The proposal consists of two levels of basement car parking with 36 spaces, ground level retail, four levels with 23 serviced apartments and a rooftop terrace on the “old post office” site on the corner of Memorial Dr.

The application was prepared by Matthew Wales and Associates on behalf of Baruhoy Investment Pty Ltd.

It states that “shop-top housing means one or more dwellings located above ground floor retail premises or business premises”.

“The proposed development complies with the definition of shop-top housing as all 23 residential apartments are above the proposed commercial-retail floor plate.”

The application also makes reference to a pre lodgement meeting held with Central Coast Council on September 21 last year.

The main issues were said to include a statement that: “It is unlikely that Council officers or the Local Planning Panel as the determining authority will support the significant exceedance of the floor space ratio standard, which is the equivalent of four two-bedroom dwellings;”

Other reported statements included that “careful consideration of changing levels between the forecourt and the ground floor tenancies to address flooding will be required”.

It also reported that council officers stated that “proposed ground floor use should be business or retail (which includes food and drink) to ensure active

frontages”.

According to the application, the proposal exceeds the height limit of 17 m, with lift overrun of 3.31 metres (19.1 per cent), a stairwell for roof access of 2.4 metres (14.1 per cent), a inner parapet wall of 0.615 metres (3.6 per cent) and an outer parapet wall of 0.710 metres (4.17 per cent).

The application proposes a floor space ratio of 2.2:1 which exceeds the allowable ratio of 2:1 by 10 per cent.

The application devotes 22 pages to the Clause 4.6 justification for the variations.

Points made in favour of the variations include “the design merit and key location of the proposed development”.

Other points were “its relationship to the future streetscape and the overall bulk and scale of the building; and the imperative to lift the design standard of what has traditionally been seen as the centre of the

Ettalong Beach village centre.”

Under the heading “socio-economic effects”, the application states: “The proposed mixed use (shop-top housing) development will have many positive socio-economic benefits for the local community”.

In particular, it stated it would provide “much-needed apartment style residential accommodation near services in the Ettalong Beach village centre and walking distance to the Ettalong Beach foreshore and the Palm Beach Ferry service”.

It would also provide “high-quality retail-commercial shops within the Ettalong Beach village centre where there is a need for good quality floor space”.

The status listed on the council website for this application is currently “notification-advertising”, but a closing date for submissions is not given.

SOURCE:
DA Tracker, 18 Feb 2022
DA146/2022, Central Coast Council



Pearl Beach group holds meeting about planning

The Pearl Beach Environment Group will hold a meeting about planning at the Pearl Beach Community Hall on Friday, February 25, from 5pm to 7pm.

The meeting will discuss the future character statement for Pearl Beach and the draft Central Coast Regional Plan 2041.

“Comments on the Plan close Friday, March 4,” said group president Ms Mary Knaggs.

“In 2022, the current Development Control Plan applying to Pearl Beach will be revised – see Section 5.10 on Pearl Beach.

“This is the first of several meetings to consider the community views on the character

of Pearl Beach.”

Presenters will include Mr Gary Chestnut of the Central Coast Better Planning Group and Ms Jane Smith from the Central Coast Friends of Democracy.

Bookings are required and free at <https://events.humanitix.com/pearl-beach-planning-workshop>.

However, a \$5 donation is requested.

With inquiries, email pearlbeachenvironmentgroup@gmail.com or phone 0427 502 042.

“Current covid restrictions mean we can only have 74 attending,” said Ms Knaggs.

“You must scan in; be double vaccinated; and wear a mask.”

SOURCE:
Media release, 15 Feb 2022
Mary Knaggs, Pearl Beach Environment Group



Four-unit proposal for Ocean View Rd

A four-unit multi-dwelling development is proposed at 167-171 Ocean View Rd, Ettalong Beach, according to an application received by Central Coast Council.

It was prepared by Doug Sneddon Planning Pty Ltd for owners The Hand No.1 Pty Ltd.

The development will consist of four units in a “gun barrel” configuration with two two-bedroom units and two three-bedroom units.

All units will be two storeys. An arborist’s report prepared by Mark Bury Consulting lists six existing trees which are all to be removed.

These are a white bottlebrush, a lilly pilly, three rough barked apples and a willow myrtle.

The proposal does not comply with the deep soil setbacks required by the planning provisions.

The side boundaries should have a setback of two metres, but vary from one to two metres on the western side and between 0.5 and one metre on the east.

The front and rear boundaries should have a setback of six metres, but the rear setback is only 4.5 metres.

The proposal also does not comply with setbacks to exterior walls.

Side boundaries should

have an average of four metres setback with a minimum of 3.5 metres, where the western side boundary varied to as little as 3.0 metres.

The rear boundary should be a minimum of six metres, but is only 4.5 metres.

In relation to the non-compliances, the application states: “The proposed development’s partial non-compliance with the deep soil area and building setback guidelines are considered reasonable in the circumstances.”

It said: “The objectives of these controls are achieved notwithstanding the minor numerical non-compliance.

“The proposed building footprint generally aligns with development on adjoining properties.

“The non-compliance is consistent with other contemporary multi dwelling developments approved by Council in the locality in recent years.”

The status of the development application is listed the council’s planning portal as “notification/advertising”, so is open for submissions.

No end date for submissions is listed on the Council website.

SOURCE:
DA Tracker, 19 Feb 2022
DA259/2022, Central Coast Council

CWA offers women’s ‘power writing’ workshop

The Woy Woy branch of the Country Women’s Association is offering a Power Writing Workshop as part of the upcoming NSW Women’s Week from March 7 to 13.

“We have partnered with Bravewords Writing to host a Power Writing Workshop for our Woy Woy Wordsmiths members facilitated by local author and writing teacher Ms Adrienne Ferreira,” said branch president Ms Jane Bowtell.

“This life writing workshop is part of a greater program across the state designed to empower women over NSW Women’s Week.

“If you are a Peninsula woman with a story to share, please submit it.

“It could be a short story, essay or poem, as long as it is under 500 words.

“Your work will then be published on the Bravewords website.

“Don’t worry, if you’re shy you can always submit anonymously □.

“Dust off the laptop, grab that special notebook you bought and promised yourself you’d use or dig out the old typewriter.

“It’s time to get writing.”

Deadline for submissions is Sunday, March 13.

Submissions can be made at <http://bit.ly/3sEXT83> or via email to woywoycwa@gmail.com.

SOURCE:
Social media, 15 Feb 2022
Jane Bowtell, CWA Woy Woy

Men’s Shed resumes stall

The Umina Beach Men’s Shed has resumed its stall at the Woy Woy Peninsula Lions Club’s car boot sale.

Six months after the previous car boot sale, which was suspended due to Covid restrictions, the Lions Club has started the monthly sales again on the last Sunday of the month of January.

“We had to scramble and gather up some sale items on the Friday ready to set up the stall with the

team on Sunday,” said Men’s Shed secretary Mr Vic Brown.

“It’s a fun social morning working alongside fellow members and interacting with the public.

“What’s more, those who volunteer and participate generate much needed funds to for the Shed.”

SOURCE:
Newsletter, 16 Feb 2022
Vic Brown, Umina Beach Men’s Shed

Tesch attends graduation of former student

Member for Gosford Ms Liesl Tesch has attended the graduation of a former student as a teacher at the University of Newcastle.

Ms Danielle McFarlane graduated with a Bachelor of Secondary Education, Humanities (Honours).

Ms Tesch’s former business studies student has secured a full-time job at a local school teaching business studies, legal studies and commerce.

“You could quite literally say I am following the same path as Liesl,” said Ms McFarlane.

“When I first had her as a teacher, I gave Liesl a really hard time.

“She took that in her stride and she taught me more about myself than anyone else ever had.

“She was very good at highlighting everyone’s strengths but also encouraging us to challenge and identify and push ourselves in areas where we were not as strong.

“Now that I am a teacher I certainly aspire to be like Liesl.”

“She challenged us in a supportive way.

“I would really love to channel that in my teaching.”

Ms Tesch said she was immensely proud of Danielle.



“I know Danielle recently had a big accident and suffered a traumatic brain injury as a result, just three months before she was due to finish her degree.”

“She explained she had to put her degree on hold for a while and had to obtain clearance before she could return to her studies because of the nature of the injury.

“Despite this all, she overcame it and finished strong.”

“I am sure every teacher knows the most fulfilling moment and ultimate compliment in our career is seeing our students pursue our profession and our subjects.”

SOURCE:
Media release, 14 Feb 2022
Liesl Tesch, Member for Gosford

PEARL BEACH

15TH EVENT

Opera

IN THE Arboretum





ROSARIO LA SPINA



JANE EDE



JOSÉ CARBÓ



CLARISSA SPATA

SATURDAY 12 MARCH 2022
3.00 – 5.30 pm

VENUE
Crommelin Native Arboretum,
Pearl Beach, Central Coast NSW

TICKETS
Adult: \$85.00 / Senior: \$80.00
10 or more tickets: \$75.00 each
High school student: \$40.00
Primary school student: Free

BYO
Picnic, rug and chairs

BOOK NOW
www.trybooking.com/BTEGA
www.woywoyrotary.org.au
f operainthearboretum

PRESENTED BY
Rotary Club of Woy Woy Inc

Thank you to all our sponsors of this Rotary Club of Woy Woy charity event

PREMIER
 Central Coast Volkswagen

PLATINUM


GOLD
Accom Holidays
Everglades Country Club
Kawai
Pearl Beach Patonga Real Estate

SILVER
Bendigo Bank
Priceline Pharmacy
Retire Australia

BRONZE
Campbells Timber & Hardware
Flowergirl Creations
Jasmine Greens
SpecSavers @ Deepwater
Seaspray Jewellery
Tonkin Drysdale Partners
Moa Window Coverings
Peninsular Village Nursing Home
Workforce International

Forum

Council must ensure public goals are met as a priority

The comment, in the draft Housing Strategy report on bonus density provisions for residential developments is an interesting one (“Bonus height provisions ‘may not have desired outcomes’”, PN Extra, February 7).

All of the Council’s development standards are unnecessarily complicated and, in many cases, inconsistent.

So it is not surprising that the height provisions are completely arbitrary and without any clear definition of their objectives, meaning that the consultant’s warning that the present provisions

might be ineffective will come as no surprise.

It would be going too far to say that the multiplicity of unnecessary controls is the main reason that practically every development on the Peninsula fails to comply with regulations.

But it doesn’t help that so many standards seem to be in conflict and to lack any discernible purpose.

One of the problems is the obsession with building heights, as though the height of a building is the main factor in ensuring desirable living conditions for residents and an attractive environment for the community.

Linking “height” bonuses to the size of the lot will not ensure a better design outcome: It will merely encourage developers to use the maximum building envelope, without any consideration for outlook, sun and light penetration or shadowing effect.

What is needed is to link the floor space ratio to the footprint of the building, so that height increases as site coverage decreases.

This means that the developer gets a bonus for providing more open space on the site, and there will be less overshadowing of adjoining properties, because of the building’s slimmer profile.

Higher-density buildings

should be clustered around railway stations, bus stops and shopping areas, so as to maximize pedestrian access to these traffic magnets.

What would also be desirable would be to scatter small industrial undertakings close to residential areas, so that journey-to-work movements can be minimized.

Because of Central Coast’s unique topographical characteristics, economical bus services will always be a problem.

This means that large industrial areas must inevitably generate high volumes of car traffic, putting the much-vaunted goal of a “15-minute city” permanently out

of reach.

Of course, nothing will be achieved as long as the Council sits on its hands and trails along behind private-developer trends.

Private developers will always take the easiest and most immediately profitable line.

What is needed is proactive initiative from Council, to ensure that public goals are met as a priority, not as a second thought.

There has never been any sign of this in the past, but we can always hope.

SOURCE:
Email, 15 Feb 2022
Bruce Hyland, Woy Woy

Beach signs turn up with no notice or discussion

We are concerned and very upset residents who are incensed about the dogs prohibited signs, which turned up on the beach virtually overnight with no notice or opportunity to discuss this matter.

The local beaches are for the local residents to enjoy all year round.

Yes, it is good to have holiday makers come and enjoy it.

However it is the locals who are the backbone of the community economy 365 days a year.

We are from Ettalong Beach, Umina Beach and Woy Woy.

Many residents in these areas are elderly and for many years have been beach walkers with their beloved dogs.

Ettalong Beach from the Box restaurant to the Ferry Wharf road has always been a family beach for families, children and senior citizens.

It has provided a much-needed social and therapeutic for all.

All dog owners are very respectful of our beloved beach and very aware of their responsibilities with their animals.

Locals are always the ones cleaning up after the holiday-

makers leave.

On Saturday, folks arrived at the beach to see new signs prohibiting dogs on our beach from the box to the Ferry Wharf.

Locals who have lived their lives here and enjoyed our beach with their animals were devastated to see these signs.

I have been using this beach for 60 years and am yet to see any instance of problems with dogs or their owners.

This has taken away the freedom and enjoyment of families coming together to walk, swim and socialise.

Local residents are the backbone of the community and take great pride in their areas.

Therefore, for the council to put these signs up without any warning or notice to residents is very, very wrong.

If council were to see how the beach is used, enjoyed and kept clean, they would not need to display these signs.

So many elderly and disabled people live for their companion dogs and they are a very important part of their lives both mentally and physically.

The danger at the beach is not the pets but the jet skiers who take

over the beach front by driving in between swimmers (many of them toddlers and children), throw their anchors out and beach their jet skis on the beach front.

There are times when there are six to 14 all beached in the swimming area.

According to what we were told by the Maritime, they are not allowed to come past the yellow buoys and within 30 metres of swimmers.

There are some who do the right thing but many, many speed in, abuse people and park on the beach not showing any regard or care for the people swimming.

There is far more danger from them and their antics than beloved dogs with their families.

Unfortunately they are never policed so they go with their own rules putting public safety at risk.

Let us have the signs removed and continue to enjoy the beach with our pets.

We are desperately seeking help and guidance to remedy this and remove the signs giving the beach back to the local community and ridding the area of the jet skis.

SOURCE:
Email, 8 Feb 2022
Dianne Garland, Woy Woy

One decision can now have far-reaching consequences

After the Peninsula Residents Association meeting on February 15 at Umina, I reflected on the Peninsula’s future in regard to development and the consequences across the area.

I have concluded a single decision now has negative impact on the triple bottom line.

An example is the sale of Bullion St Umina carpark.

This infrastructure has been proposed for sale by the Council (both Gosford and Central Coast) without considering the devastating consequences.

Ettalong is served by a very small IGA supermarket addressing the needs of a very small market base.

However, the service is appreciated by customers.

As major development has been approved with more proposed in the near future, demand for supermarket products will escalate beyond the capacity of IGA. Ettalong.

Residents now use other Peninsula centres to purchase those goods.

If the Bullion St carpark is sold, there will only be Woy Woy CBD and the under-construction Umina Mall, as practical options to purchase essential items.

This will change shopping habits across the Peninsula, with an increase demand for car parking and changed road network use.

No traffic management study will be of the essential quality to report on this exacerbated demand on the Peninsula’s essential infrastructure.

There will be major congestion resulting from a single decision.

This is the reason for the residents’ association being established.

With the push for more development, vital issues will be swept under the “addressed under conditions” heading with no further action taken.

Never before has it been more important than now for residents to be aware of proposed development and the inevitable flow-on to their lifestyles.

SOURCE:
Letter, 16 Feb 2022
Norm Harris, Umina

Public Notices

Car Boot Sale

Woy Woy Peninsula Lions Club

Feb 27

7am to 1pm

Great variety of stalls ~
BBQ, Tea & Coffee.

Vendors Welcome ~ \$20 per car

Dunbar Road Car Park

NB stall sites not open until 6.00am

Cnr. Ocean Beach Road Woy Woy

Always Last Sunday
(no events in December)

Enq: 0478 959 895

ABC “The Friends”

Support group for
Public Broadcaster

Aims:
Safeguard ABC’s independence,
adequate funding,
high standards.

Meetings through the year +
social mornings.

Well-known guest speakers

0400 213 514

www.fabcnsw.org.au



Andrew MEHRTENS
All Black point-scoring wizard

Woy Woy Rugby Club

SPORTS
LUNCHEON

Friday 11 March 2022

at Ettalong Diggers from 12-4pm

MC: Peter ‘Fab’ FENTON

Cost: \$140 per person
(Tables of 10)

BOOKINGS & PAYMENT REQUIRED:
functionwrru@gmail.com

Kevin Glew 0417 417 186 John Kenney 0410 587 725

Payment: BSB #633000 Acct #132893660, include name



Matt BURKE
Fullback Extraordinaire

Aged care cases are ‘asymptomatic’

The two remaining residents who had not contracted the coronavirus in the memory support unit of a Woy Woy aged care home have tested positive to the disease.

“Both these two residents are vaccinated and asymptomatic,” said Blue Wave Living chief executive Mr Matt Downie.

“It is simply not possible to isolate residents in this space, who lack insight and awareness.

“When residents do not wear

any personal protective equipment and move freely around a space interacting with other residents, it is unfortunately going to see a highly contagious virus spread.

“This does mean The Cove will remain in lockdown.

“However, we will continue to facilitate general visitors across the rest of the facility.

“We continue to secure sufficient stock of rapid tests to screen all staff prior to commencing their shift as well.”

Visits to the rest of the facility must be booked.

All visitors must bring a rapid test with them, and complete the test at our main entry prior to entering.

Other requirements include social distancing, evidence of vaccinations and wearing an N95 mask, which will be provided on arrival.

SOURCE:
Social media, 10 Feb 2022
Matt Downie, BlueWave Living



Getting dressed up for Australia Day

Activities planned for Australia Day had to be cancelled due to Covid at a Umina aged care home.

However, to celebrate the day, staff dressed up in lifesaver uniforms to honour the great Aussie icons.

The team “saved the day” by putting on a show for the residents as they watched on from their windows.

The village newsletter, Pipeline News, also contained Australian themes including the history of surf lifesaving and an article about bush tucker.



SOURCE:
Social media, 7 Feb 2022
Colin Osborne, Peninsula Villages

Only four days’ notice

Central Coast Health gave just four days’ notice that a “pop-up” vaccination clinic would be held at Woy Woy Hospital last Friday, February 18.

The walk-in clinic offered first, second and booster doses of the Covid-19 vaccine.

Pfizer vaccinations were available for all ages from five years upward.

The clinic was held at the hospital, near the hydrotherapy pool in the Community Rehab Building from 10am to 6pm.

SOURCE:
Social media, 14 Feb 2022
Central Coast Health

Restoring the beach to pre-covid state

Umina Community Group’s dunecare group filled “two huge bags” with weeds on Wednesday, February 9.

Working at the Berith St beach entrance, the aim was to restore it to its pre-covid state.

The group works at different locations each Wednesday of the month from 8am to 10am.

More volunteers are currently needed.

SOURCE:
Social media, 9 Febr 2022
Umina Community Group



Liesl Tesch MP
Member for Gosford

How can I help?



- Schools and education
- Community Recognition Awards
- Anniversary & birthday messages
- Fair Trading
- Hospitals and health
- Main roads
- Police and Emergency Services
- Public housing
- Trains and public transport

📍 20 Blackwall Road, Woy Woy NSW 2256
@ Gosford@parliament.nsw.gov.au
☎ (02) 4342 4122



Matt Burke and Andrew Mehrtens launch Lions rugby season

Woy Woy Rugby Club will launch its season at Ettalong Diggers on Friday, March 11, with a luncheon featuring guest speakers Wallaby Matt Burke and All Black Andrew Mehrtens.

“Both were match winners on the pitch who are now prominent commentators,” said luncheon organizer Mr Kevin Glew.

“They are also extremely popular raconteurs with a host of exciting and humorous incidents to recall from countless tours, international

and Super 15 matches.

“It will be Mehrtens’ first speaking engagement on the Central Coast

“Andrew Mehrtens played 70 tests for the All Blacks from 1995-2004, scoring 967 points as well as 108 games with Canterbury, NZ, scoring 1056 points.

“Matt Burke is Australia’s most capped full back, playing 81 tests, scoring 878 points, and 115 games with the Waratahs amassing 1172 points.”

Mr Glew said Woy Woy club

patron Mr Peter “Fab” Fenton would be master of ceremonies, as he had been at previous functions.

Tickets include trivia quiz entry, the meal, wine, soft drinks and a selection of draught beer.

Dress is smart casual.

Booking is required and may be made by email to functionwwru@gmail.com.

For further information, phone Mr Glew on 0417 417 186.

SOURCE:
Media release, 15 Feb 2022
Kevin Glew, Woy Woy Rugby Club



Success in life saving

Umina Surf Life Saving Club members have taken a number of places in the Surf Life Saving Central Coast branch championships.

The following members were declared Champion Lifesaver in their age groups: U14F Matilda Lawrence, U17M Archie Rayner, U19F Bethwyn Caller, 30-39F Shelley Smith, 40-49F Christine

Bishop and 40-49M Damon Sommerfield.

Ebony Rayner was second in the U17F age group.

Umina also had the U17 Champion Patrol, with Archie Rayner, Aiesha El-Kurdi, Ebony Rayner and Izzy Fayers (pictured).

SOURCE:
Social media, 17 Feb 2022
Umina Surf Life Saving Club



Free heart checks at Lions Cup

Free heart checks were on offer at Southern and Ettalong United Football Club’s inaugural Lions Cup held at James Brown oval on Saturday, February 19.

The day was promoted as a family-friendly pre-season bonding

session.

Apart from the soccer matches, it included a barbecue, “a few drinks together, and live music throughout the afternoon”.

SOURCE:
Social media, 19 Feb 2022
SEUFC

Team selected

Woy Woy Peninsula Netball Association has announced the players who were successfully selected in the Opens Representative Team.

They are Cali Backhouse, Beth Chilcott, Bella DeVivo, Janai Edwards, Mel Imber, Rachel Jordan, Cassidy Matterson, Eden Matterson, Liz McCarthy, Jade Sherman and Nicola Stone.

Coach is Sandy Watts.

SOURCE:
Social media, 8 Feb 2022
Woy Woy Peninsula Netball Association

Bowls club raises \$5000 from charity day

Umina Beach Men’s Bowling Club member Mr Ian Jarratt presented a cheque for \$5000 to Gosford Hospital fundraising manager Ms Jan Richen on Friday, February 17.

The money were the proceeds of the club’s Ron Pursehouse Prostate Cancer Charity Day, which is run and managed by Mr Jarratt.

Ms Richen thanked club members for their on-going support

of Gosford Hospital’s prostate and urological cancer patients.

She said that the club had raised more than \$60,000 over the years and the cancer unit was extremely grateful.

Pictured are club president Mr Tom Burgmann (UBMBC President), Ms Richens, Mr Jarratt and Mr David Miller representing Club Umina.

SOURCE:
Social media, 18 Feb 2022
Peter Springett, UBMBC

Relaxed ride around Brisbane Water Loop

Central Coast Bicycle User Group will hold a relaxed ride around the Brisbane Water Loop at 8am on Thursday, February 24.

The ride will start and end at Woy Woy Fishermen’s Wharf.

It is described as: “A cruising paced ride around Brisbane Waters.”

“This ride is perfect for those stepping up from easier rides, like the group’s Woy Woy to Gosford Boomerang ride or other easy and easy-medium graded rides,” said

leader Mr Alan Corven.

“It is mostly on road shoulders and shared paths, with some normal traffic roads, so you need to be comfortable cycling on the road with some passing traffic.

“Ride pace will be slower on the shared path sections, picking up on the road sections and a few very short hills.

“There will be coffee at Woy Woy upon completion, or somewhere else if a better option is suggested.”

Mr Corven said: “Opt-out

possible at Gosford waterfront, about one kilometre to Gosford station, for a 10km shorter ride.”

The ride is graded medium, with an average pace of 19-22km/h.

Ride distance is 45 kms, with an altitude gain of 370 metres.

Estimated duration is 2.5 hours.

The ride may be cancelled at short notice due to poor weather or “ride leader issues”.

For further information, contact Mr Corven on 0414 538 977.

SOURCE:
Social media, 17 Feb 2022
Alan Corven, CCBUG

Southern Spirit cricket results

Results of games played by Southern Spirit Cricket Club over the past week were:

First Grade: Northern Power 83 (R Watson 3/19, D Friend 2/2, HS Jaenke 2/13, LE Cork 2/22) and 9/106dec (LE Cork 4/10, R Watson 2/14, S Higgins 2/17) def by Southern Spirit 7/214dec (M Fiddock 86, LA Bull 57).

T20: Southern Spirit 57 def by Lisarow 8/127cc (CA Di Blasio 2/12, LE Cork 2/26).

Second Grade: Southern Spirit 8/123dec BN Weir 39 BJ Orman 31 def Northern Power 85 (J Jewiss 3/29, JD Johnston 2/6, LC McIntyre 2/9, MR Wright 2/17) and 4/88cc (BJ Orman 2/17).

Fourth Grade: Terrigal 4/79 def Southern Spirit 77 (O Martyn 27).

Male Youth League: Wyong v Southern Spirit 6/115cc (K Warner 42, JD Johnston 32).

Under 16: Southern Spirit 5/139cc (JD Johnston 44) def Kincumber Green 4/90cc.

Under 14b: Narara Wyoming Junior 7/63 (L Papps 3/5, A Cattley 2/11) def Southern Spirit 6/62cc.

Sixth Grade: Southern Spirit 139 (BJ Handley 47, M Scanlan Jr 26) def Narara 10/89 (C Murchie 4/26, J Channon 3/2).

Seventh Grade: Southern Spirit v Brisbane Water 3/23 (BT Higgins 3/6).

Eighth Grade: Southern Spirit

2/97 (A Zadravic 50*) def Brisbane Water 96 (P Sharpe 4/11 W Hawksley 3/11 MJ Donnelly 2/19).

Under 12b: Southern Spirit Purple 48 def by Terrigal Maroon 66 (L Silverstone 2/3).

Southern Spirit White 8/63 def by Terrigal Gold 5/108cc.

Ninth Grade: Southern Spirit 9/110cc def by Wyong 5/111cc (IF Zadravic 2/9, A Cattley 2/13).

Womens 2nd Grade: Southern Spirit 143 (D Harris 61) def Northern Power Blue 7/45 (L Mitchell 2/22).

SOURCE:
Website, 20 Feb 2022
Southern Spirit Cricket Club