



Five students achieve band six scores



Five Brisbane Water Secondary College students have achieved band six scores (90-100) in the Higher School Certificate.

Band 6 scores were awarded to Claudia Jordan in Food Technology, Aliesha Peterson in CAFS, Dmitrii Dobyshev and Bailey Carroll in Mathematics Advanced and to Keira Murphy in PDHPE.

They are pictured clockwise from top left.

SOURCE:
Social media, 20 Jan 2022
Rebecca Cooper, BWSC Woy Woy



Beachside Australia Day celebrations cancelled at Pearl Beach

The Pearl Beach Progress Association has cancelled its annual Australia Day beachside celebrations on Wednesday, January 26.

Association publicity officer Ms Lynne Lillico said the decision was made "sadly in the best interests of the community ... due to the current Covid pandemic".

"Pearl Beach has traditionally held Australia Day celebrations as well as a variety of activities and events throughout the year," she said.

"This coming year, Covid permitting, we have scheduled a number of interesting events to give the community an opportunity to socialise, enjoy and overcome the isolation and lockdowns that

we have all had to experience."

Ms Lillico said: "Pearl Beach village is situated between Broken Bay and Brisbane Water National Park and is home to small and caring community who enjoy the natural attributes of such a beautiful environment with an amazing diversity of plants, birds and animals.

"The beach acts as a magnet to locals and visitors who are attracted to the natural location and swimming in the Ocean Rock Pool."

Pictured is a previous Australia Day at Pearl Beach.

SOURCE:
Media release, 18 Jan 2022
Lynne Lillico, Pearl Beach Progress Association

Supporting the Peninsula

**Only Peninsula advertising
Only Peninsula News**

Aged care home rapid test orders 'commandeered' for stockpile

Orders of rapid antigen tests for a local aged care home have been "commandeered by the Commonwealth for the National Stockpile", according to its chief executive.

"I have been extremely disappointed by the Commonwealth in their lack of support to us, and to the aged care sector as a whole, through this Omicron outbreak," said BlueWave Living chief executive Mr Matt Downie.

"We have not received any assistance to provide testing for our residents.

"We still cannot access PCR testing.

"We have not received any rapid tests from the Commonwealth Government, and have been reliant on our own supply.

"And we have now been advised that some of our forward orders of additional rapid tests have been commandeered by the Commonwealth for the National Stockpile.

"We are having to find

alternative stock from a variety of suppliers," Mr Downie said.

"While we continue to work through these challenges, it would have been appreciated if the Commonwealth was actually supportive and appropriately resourced and prepared for this current outbreak.

"They have had over two years to prepare."

Mr Downie said the Woy Woy facility needed to continue in lockdown.

This required high levels of personal protective equipment, material changes in processes to minimise risk and a reliance on rapid screen testing.

"It is not pleasant working in N95 masks and face shields for long periods, and I thank all staff for their continued diligence in helping reduce risk to all at BlueWave," he said.

Mr Downie said: "We are having additional staff test positive every week.

"It seems as we have some staff clear their isolation, another tests positive.

"With the extremely high

numbers of cases in the community, it is almost unavoidable that a small percentage of our workforce at any given time will have Covid.

"We continue to have zero cases amongst residents, and we continue to have additional infection control measures in place to limit the risk to our elder in care here.

"We continue to maintain high stock levels of personal protective equipment to accommodate these requirements."

Mr Downie reminded family and friends of residents: "You may certainly call to talk to your loved one in care".

"Please be patient, as we expect a high volume of calls coming through our main reception during this time as we manage this current outbreak.

"Also, we also encourage the use of video links via our tablets with Zoom.

"For any Covid-specific inquiries, you can email us at: covid@bluewaveliving.org.au."

SOURCE:
Social media, 19 Jan 2022
Matt Downie, Blue Wave Living

Comprehensive coverage

Peninsula News aims to provide comprehensive, insightful and constructive reporting to give Peninsula residents the information they need to determine their own future as a community.

Whether or not the Peninsula is part of an amalgamated municipality, our community of 40,000 has the population of an average local government area in NSW and faces the same challenges.

As founding honorary editor, this is the 23rd year I have taken on the responsibility for the news content of Peninsula News on behalf of the non-profit community group which owns it.

Peninsula News remains true to its tradition of supporting the Peninsula's community identity.

It is a proud tradition that we are pleased to continue..

Mark Snell, 24 Jan 2022



Peninsula News EXTRA
Be notified. SCAN here.



Next issue: Monday, February 7

Email: contributions@peninsula.news

Peninsula News

Community Access

Peninsula News is a fortnightly community newspaper for the Woy Woy Peninsula, owned by The Peninsula's Own News Service Inc, a local non-profit incorporated association. Its aims include providing a viable, non-partisan news medium and forum exclusively for the Peninsula and developing a strong sense of community on the Peninsula.

Editor: Mark Snell
editor@peninsula.news
Advertising: Frank Wiffen
advertising@peninsula.news

NEXT EDITION: Peninsula News 537
Deadline: Thursday, February 3
Publication date: Monday, February 7

CONTACT DETAILS
NEWS: contributions@peninsula.news
ADVERTISING: advertising@peninsula.news
PHONE: 4342 5333 - Please leave a message
POSTAL ADDRESS: PO Box 585, Woy Woy NSW 2256

Please note: Peninsula News currently has no paid employees, and it may take a little time for us to get back to you. Our volunteers usually have other jobs and commitments, which compete for their time.

EMAIL ISSUES?

When emailing us, you will note that the domain name is PENINSULA.NEWS only. There is no .com or .com.au. If your email bounces or does not appear to have reached us, please check the address and try again. If this still does not work, try our old fallback address or call us by phone and leave a message.

Fallback email address: editor@peninsulanews.asn.au

Editorial policy and guidelines

At its heart, Peninsula News is a community effort.

It welcomes and relies on the contributions provided voluntarily and at no cost by local organisations, groups and residents.

The newspaper aims to be accessible to the community - both through making its columns accessible to community groups and by having copies available in accessible locations, including through its website.

The following policies and guidelines are designed to support the aims and standards of the newspaper.

Locality

The newspaper's editorial policy reflects a desire to reinforce the Peninsula's sense of community.

To qualify for publication, articles must have specific relevance to the Peninsula. For example, they must be about activities or events happening on the Peninsula or be organised by or involving Peninsula people.

The newspaper is not regional or national in nature, so regional or national issues will not be canvassed except as they affect the Peninsula.

Regional sports will only be covered from the perspective of Peninsula clubs. Regional plans will only be aired in the context of their ramifications for the Peninsula.

Peninsula News aims to be inclusive of as much of the Peninsula community as possible.

Readability

To ensure that the newspaper serves its purpose, it must be readable and represent the interests and activities of the community in its content.

Contributions to the paper are edited to consistent standards of readability. Guidelines are available for intending contributors.

All items will be dated. They must contain the name of the author to whom the contribution may be attributed, with their first name spelt out, along with their suburb or organisation. Anonymous contributions will not be accepted.

Forum letters

The Forum section provides the opportunity for readers to express their views on any aspect of Peninsula community life, with the aim of reflecting the community's diversity of opinion.

Nevertheless, letters may be edited for readability, including for length, spelling and grammar, and to avoid legal liability on the part of the newspaper, or they may be declined altogether.

Contributors are asked to keep their

contributions to the matter at hand, and to focus on the issues and not abuse or insult others.

Other than in the case of holding public figures to account, criticism of others (as opposed to criticism of particular opinions) is unlikely to be published in the interests of facilitating the expression of a diversity of views.

All letter writers need to supply name, address and contact details. Only name and suburb will be published.

Contributors who do not wish the wording of their letter to be changed at all should make a note to this effect when submitting their letter. In some cases, this may result in the letter not being published.

Corrections

We try to be as accurate as possible. However, mistakes can still slip through.

If you believe we have got something wrong, whether an error of fact or interpretation, we ask that you write to us by email with details for publication. These corrections may appear as Forum letters or as news items and should conform to our requirements for news and Forum contributions.

Source lines

Peninsula News includes "source lines" at the end of each article which aim to provide readers with information about where and how we came across the information, so that they might judge for themselves the veracity of what they are reading.

It should not be assumed that the article is a verbatim reproduction of the source. Similarly, it should not be assumed that any reporter listed is necessarily responsible for writing the whole news item. Source lines are not by-lines.

Often articles come from a number of sources. They are edited for readability and reader interest and given different headings, and consequently can be expressed quite differently from the source material.

Peninsula News usually receives its information in three ways: It is sent to us by someone wanting to promote their activities; it is sent to us in response to our inquiries; or it comes from a newsletter or other document to which we have access.

Sometimes we may interview a person or report what they said at a meeting.

The following descriptions are used:

Media Release - unsolicited contributions.
Media Statement - sent in response to our questions. **Website** or **Social Media** - information published online. **Newsletter** or **Report** - published in print or online. **Interview** or **Meeting** - statements recorded by a reporter.

Forum contributions may be: **Email** if sent electronically and **Letter** if written on paper.

First Aid training at the Bays hall

A First Aid training day will be held at The Bays Community Hall, with a small number of places available for community members.

The St John Ambulance is providing First Aid training to the Community Fire Unit volunteers on Sunday, March 13.

Three accreditation courses will be covered on the day: cardiopulmonary resuscitation,

basic emergency life support and First Aid.

"A small number of places are available for other members of the community to join," said organiser Mr Ian Vanin.

"This is a great opportunity to either learn these really useful life skills, or brush up your knowledge.

"The cost will be just \$165 for the day."

For bookings and further information, email Mr Vanin at

ianvanin@gmail.com or phone him on 0412 523 755.

Attendees must be double vaccinated.

A non-refundable deposit of \$50 will be required with bookings.

Full payment is required when the booking is confirmed with St. Johns.

SOURCE:
Newsletter, 14 Jan 2022
Gwynneth Weir, The Bays Community Group



Free seniors' diaries

The 2022 Legal Aid Seniors' Diaries are being offered for free to local residents.

Member for Gosford Ms Liesl Tesch said she had copies at her

office and were "free to collect".

"Pick-up or call 4342 4122 to arrange postage," she said.

SOURCE:
Social media, 19 Jan 2022
Liesl Tesch, Member for Gosford

Petition for footpath

Killcare resident Ms Debbie Watson has an online petition seeking support for a footpath in Araluen Dr between Killcare Marina and Stanley St.

"There is currently no footpath on this busy road and the verge on both sides has numerous trip hazards.

"With cars parked on both sides, it is necessary to either walk on the road or weave in and out of parked vehicles to avoid traffic.

"This makes it dangerous to push prams, ride bikes, supervise small children or walk dogs."

SOURCE:
Media release, 18 Jan 2022
Debbie Watson, Killcare

Two books discussed

The Umina Beach branch of the Country Women's Association will discuss two books at its February 7 book club meeting.

They are The Salt Path by Raynor Winn and The Girl from Munich by Tania Blanchard.

Club president Ms Rikki McIntosh recommended reading "now that you've hopefully put yourselves on the recovery path from all that holiday eating".

"As always read one, both or none and we'll have a great discussion anyway."

SOURCE:
Social media, 8 Jan 2022
Rikki McIntosh, CWA Umina Beach

Car boot sale resumes

Woy Woy Peninsula Lions Club will resume its monthly car boot sale and barbecue on Sunday, January 30.

The car boot sale has been cancelled for several months because of the pandemic and adjacent works by Central Coast Council.

"Due to council demolishing the demountable toilets and building new amenities block, we have lost about 30 per cent of our car spaces," said club president Mr Greg Head.

"It is suggested you arrive no later than 6am.

"We are not allowed to set up earlier than 6am and we ask all

stallholders to be very mindful of the neighbours nearby.

"We now have access to the brick amenities block in the middle of Rogers Park."

"Monthly Car Boot Sale and Barbecue Events will now be held on the last Sunday of each month except December.

"We recommend checking our mobile 0478 959 895 for updates a couple of days prior to the event."

Cost is \$20 per car space.

"This will be collected by a member of our club during the day."

SOURCE:
Website, 20 Jan 2022
Greg Head, Woy Woy Peninsula Lions Club

Rainfall is less than half January average

The Peninsula has received 56mm of rain in the first three weeks of January.

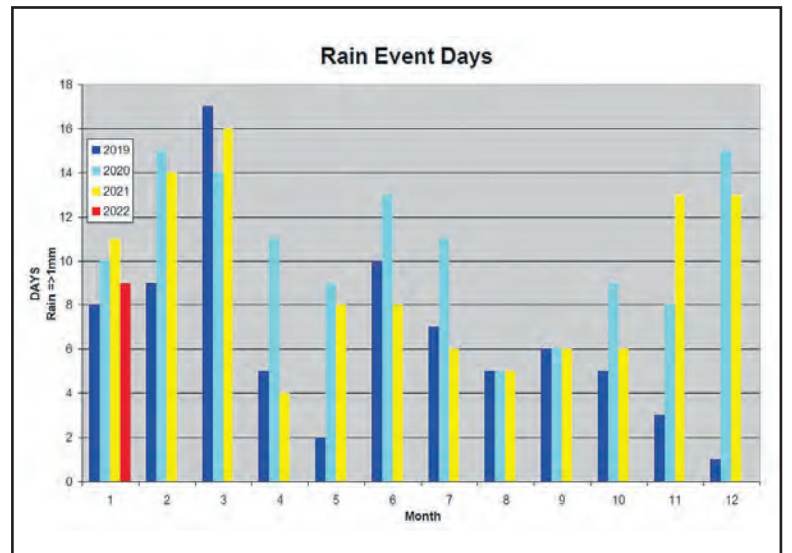
This was less than half the January average of 120mm.

However, only a further 30mm is needed to reach the median January rainfall of 86mm.

So far, the month has recorded nine days of rainfall greater than one millimetre.

This is a similar number to the last three January figures, where eight millimetres was recorded in 2019, 10mm in 2020 and 11mm in 2021.

SOURCE:
Spreadsheet, 21 Jan 2022
Jim Morrison, Umina



Council works budget of \$18M for next financial year

Central Coast Council staff are proposing a capital works program budget for the Peninsula of \$18 million for the next financial year and a total of \$44 million for the next three financial years.

The budget is expected to go to a Council meeting on February 3.

For next year, \$13.6 million comes from grants funding and includes work on the Rawson Rd roundabout intersection (\$5.27 million), Springwood Ave (\$1.3 million), the skate park (\$3.75 million) and upgrades at Umina oval (\$2.52 million), and the Everglades catchment drainage (\$650,000).

Over the next three years, \$31.6 million is expected to come from grants funding.

Of the \$4.43 million of projects being funded this year by rates and other general revenue, \$3.29 million is being spent on work at the Woy Woy tip.

Three other proposed projects account for the remaining \$1.14 million: James Browne oval lighting (\$390,000), Umina rugby clubhouse renewal (\$250,000) and Monastir Rd seawall in Phegans Bay (\$165,000).

In the following two years, \$2.60 million and \$2.19 million respectively will come from general revenue for capital works.

In the first of the two years, \$915,000 is earmarked for Woy Woy waterfront redevelopment, \$648,000 for sports ground carparking and cricket upgrades, \$300,000 for the Lions Park playground and \$270,000 for the Rip Rd reserve seawall at Blackwall.

In the second of the two year, \$1 million is allocated for a shared path in The Esplanade in Umina, another \$370,000 to the Rip Rd seawall, \$270,000 to Umina library meeting rooms, \$200,000 to stormwater work at Pearl Beach lagoon and \$130,000 for Mt Ettalong lookout "renewal".

The council released its proposed capital works budget for its meeting just prior to Christmas on December 20 and resolved to exhibit it along with other draft documents from Wednesday, December 22, to Friday, January 21.

The budget was contained within the Draft Delivery Program 2022-2025 and other documents were the Draft Revised Community Strategic Plan and the Draft

Resourcing Strategy and Draft Fees and Charges 2022-23.

It was resolved that the "Council consider submissions and adoption of the documents at a meeting of the Council on February 3 for the purpose of meeting IPART's requirements".

A report to the council meeting stated: "As part of IPART's requirements, if Council is to apply for a Special Variation it must reflect in its Integrated Planning and Reporting documents what the situation is, identify the need for a variation and detail the options or scenarios that are available.

"IPART also requires that the documents are to be exhibited prior to submitting an application.

"To meet this, If Council is to apply for a variation, an application must be submitted by February 7.

"Given the importance of these documents and to ensure the community is able to view and have their say, a further exhibition is planned for April, with adoption in June."

For every \$50 paid by Peninsula residents in rates, \$1 million is raised in Council revenue.

SOURCE:
Central Coast Council
agenda 2.1, 20 Dec 2021



Beach safety brochure produced for Pearl Beach

A beach safety brochure is being distributed at Pearl Beach to educate visitors and residents about the dangers of the beach.

A number of community education safety sessions were also being held.

Ocean Beach surf lifesaver Ms Louise Lambeth is author of the children's surf safety book, Annie and the Waves, has been involved in producing the leaflets and running the education sessions.

She said the beach had been classified as a black spot, following recent drownings and because of its sudden drop off into deep water and surging and plunging waves with a strong backwash, and lacking a beach patrol.

"Pearl Beach Cafe and Pearl

Beach Patonga Real Estate are stocking these brochures plus my drowning prevention children's books and are making sure residents and visitors will be able to access these brochures."

Surf Life Saving Central Coast was creating a series of brochures with input from local clubs, she said.

She said the Pearl Beach Progress Association and council lifeguards were joining her in presenting "ongoing community education sessions".

Ocean Beach and Umina Surf Life Saving Clubs were first responders for Pearl Beach, she said.

SOURCE:
Social media, 18 Jan 2022
Louise Lambeth, Ocean Beach SLSC

Residents call for more time for rates submissions

The Peninsula Resident's Association has called on Central Coast Council to extend the exhibition period for the documents it has prepared in support of its special rate variation submission to the Independent Pricing and Regulatory Tribunal.

"The exhibition period is insufficient for residents to be able to give the documents serious consideration, given that they were released almost on Christmas Eve and most community groups and residents are just returning now after their Christmas break," said association secretary Mr Julian Bowker.

"Further, as we are still in the midst of school holidays and the Covid pandemic, the association has requested that the exhibition period be extended for a further four weeks to allow meaningful community engagement.

"The association is opposed to the special rate variation.

"We view it as being onerous, unnecessary and unjustified.

"We do not believe the documents demonstrate a need for a continuation of the variation.

"The association does not accept the council's survey methods, results or interpretation to validly represent community attitudes.

"Insufficient information has been made available, particularly


at a local level, for the community to be able to respond with a meaningful alternative.

"No IPART submission should be made before return to democratic decision-making by elected councillors.

"The association has not had time to detail its concerns before the submission deadline."

The Peninsula Residents Association is a voluntary non-profit community group that aims to serve as a non-partisan forum and give the Woy Woy Peninsula community a collective voice on matters affecting its quality of life.

SOURCE:
Media release, 23 Jan 2022
Julian Bowker, Peninsula Residents Association



ACCOM
PROPERTY

The trusted name in PROPERTY MANAGEMENT for
HOLIDAYS + SALES + RENTALS



Ettalong office: 02 4344 6152 - www.ettalong.accomholidays.com
Killcare, Daley's Pt, Ettalong, Umina and Pearl Beach, Patonga and Woy Woy



Planning

Ettalong foreshore rezoning allowed to proceed

The Department of Planning has agreed to allow a planning proposal to proceed for rezoning of Ettalong foreshore at 43-46 The Esplanade.

The proposal would see the maximum building height from 11.5m (about three stories) increased to 17m (about five stories); and the floor space ratio increased from 1:1 to 1.75:1.

In issuing "gateway approval" on December 23, Department of Planning acting executive director Ms Sarah Lees said: "The planning proposal must be made publicly available for a minimum of 28 days" before June 1.

She said: "The planning proposal is to be updated prior to community consultation to discuss the proposed voluntary planning agreement in part three of the planning proposal.

"Consultation is required with the Biodiversity Conservation Division" about coastal protection and flooding.

In a planning assessment completed for the determination, the department revealed that the Local Planning Panel at its June meeting last year had recommended the site be developed as one consolidated lot with standards relating to minimum

allotment size, minimum frontage and site consolidation included in the local environmental plan.

"The panel also suggested the proposed height of building and floor space ratio controls rely on detailed urban design controls to be developed in a future development control plan, which should preferably be exhibited with the planning proposal.

"Among others, the design controls should address issues, such as overshadowing of the beach, public open space and bushland in the area, view sharing to the water from other B2 Local Centre zoned land in the centre, building separation and setbacks.

"The panel further expressed support for the intention to prepare a planning agreement together with the planning proposal and for the consideration of public benefits (e.g. affordable housing, through-site links and public realm improvements along The Esplanade and Picnic Parade).

"The Department is satisfied Council has addressed the matters raised by the local planning panel," the assessment stated.

It stated: "The draft Central Coast Regional Plan has a strong focus on creating a 15-minute region made up of mixed-use neighbourhoods in

various contexts, emphasis on infill approaches, prioritisation of walking, cycling and public transport in urban areas and town centres and reinforcing the importance of equity so that people have greater choice in where and how they live, how they travel and where and how they work.

"The planning proposal and site context contribute to the delivery of these aims by facilitating mixed uses in an existing local centre, creating employment and improving housing choice."

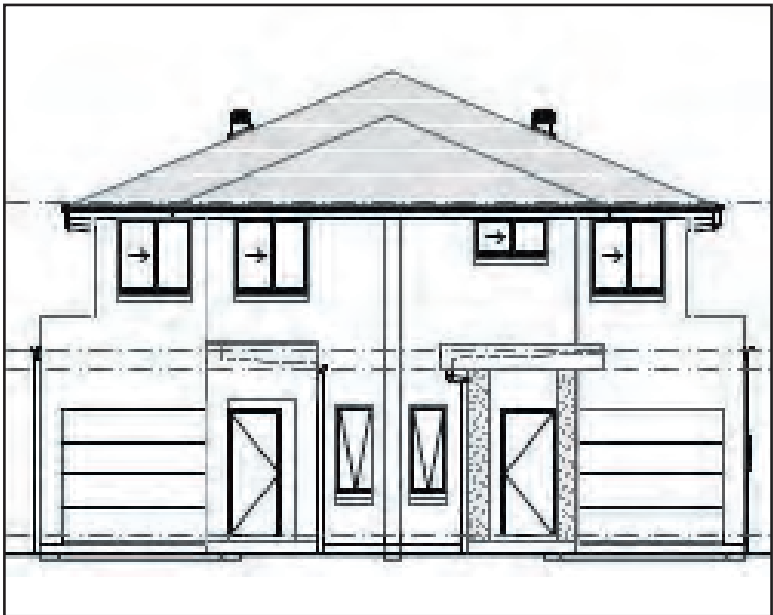
In a separate decision, the Department appears to have given gateway approval on October 20 to a planning proposal to rezone recreation land in Macleay Ave, Woy Woy, to R1 residential.

The Department's planning portal states: "The site adjoins other land zoned R1 and developed for medium density housing.

"The eastern part of the site will remain zoned RE1 and be dedicated to Council via a planning agreement."

However, the portal does not contain documents containing the gateway determination or the associated planning assessment.

SOURCE:
Website, 21 Jan 2022
Planning proposals, NSW planning portal



Dual occupancy application has detailed arborist report

Central Coast Council has received a development application for a dual occupancy at 29 Palm St, Ettalong Beach.

This application from Hudson Homes is unusual in that the arborist's report accompanying it, prepared by Glenyss Laws, is very detailed.

At 19 pages, it dwarfs the planning statement in support of the application which is a modest five pages.

Of the nine trees on, or adjoining the site, only two will be retained.

One of the trees to be sacrificed will be a street tree – subject to council approval.

The application describes the development as "a two-storey dual occupancy dwelling consisting of formal and informal open plan entertaining areas, bathrooms, living room and single lock up garages to the ground floor.

"The dwelling has a total floor area of 394.50 square metres which includes the garage, porch and the alfresco.

"The home has style and character with the introduction of articulated external walls and variations in roof geometry which minimise the bulk and scale of our development.

"Finish materials such as face brickwork, rendered piers and a tiled roof add architectural elements and vision for future construction and set a desirable precedent for any future development in the

surrounding areas."

The application states: "The proposal complies with all of council's requirements and their Development Control Plan, with the exception of the garage dimensions, for which an exemption is sought.

"Each of the garages proposed has a dimension of 3.0 metres wide, which complies with Gosford DCP requirements.

"A depth of 5.5 metres is proposed, to improve front facade articulation, in lieu of the 6.0 metres required.

"Additional storage has been provided on the first floor to offset the reduction in garage depth. The proposed garages comply with AS2890.1."

However, the application seems to overlook the building envelope controls which it exceeds and the design of the proposed duplexes being virtually identical, contrary to "facade articulation controls which state: "Form and design of each dwelling in dual occupancy developments should be varied."

The application also uses a single north point in its plans that is neither true north nor magnetic north, which makes it difficult to confirm the accuracy of shadow diagrams.

The application is open for submissions until February 7.

SOURCE:
DA Tracker, 20 Jan 2022
DA63803, Central Coast Council
Reporter: Frank Wiffen

Panel stands by its refusal of Ettalong development

The Local Planning Panel has stood by its rejection of a six-storey mixed-use development at 227-233 Ocean View Rd, Ettalong Beach, in a review of its determination at its meeting on December 16.

Council planning staff had recommended approval of the development proposed by Jedaclew Pty Ltd, which included 25 residential units.

"The Local Planning Panel reviewed the previous decision to refuse the development application as per the Section 8.2 application

for review of determination, and reaffirmed the refusal," the panel minutes recorded.

The panel repeated its previous grounds for refusal, which included failure to justify non-compliance with planning provisions or to adequately respond to State apartment design requirements.

The Panel's decision was unanimous.

It also resolved that the Council advise the 79 people who made written submissions of the Panel's decision.

SOURCE:
Local Planning Panel agenda 3.1, 16 Dec 2021
DA57779, Central Coast Council

Council to employ more planners

Central Coast Council has increased "employee costs" for its Development Assessment Unit by \$900,000.

The increase has been offset by a \$900,000 reduction in the Materials and Services budget.

The increase will be used to employ more staff "to cater for the demand in the building-construction sector and Councils legislated obligations".

"It is anticipated that any uplift would be for a temporary period only (maximum two years) with the employee costs budget being reviewed as part of the annual review cycle."

SOURCE:
Central Coast Council agenda 2.8, 14 Dec 2021

Council to consider registering Umina oval kiosk lease

Central Coast Council will tomorrow consider a recommendation to register the lease for a kiosk on Crown Land in Umina.

A staff report to the council meeting implies the lease to Jasmine Greens Kiosk should have been registered years ago.

"Council granted a five-year

lease with five-year option to the tenant, commencing 18 June 2014, over part of the Crown Reserve known as the Umina Recreation Precinct.

"The tenant has exercised the five-year option and the lease has been signed by both parties.

"The permitted use of the lease is a cafe, kiosk and restaurant and

therefore it is subject to the Retail Leases Act 1994, which states a retail lease of more than three years must be registered on title."

The report recommended the council execute the lease with its seal.

"As the lease is over a Crown Reserve trust, Council's common seal is required to be affixed to the

front page of the lease in order to complete execution of the lease and register it."

Under the lease, Ms Gabrielle Greyem was named as the tenant.

The report did not state why the lease was not registered when it was granted in 2014, or with the five-year option in 2019.

However, it did note the Council's

"Goal G: Good governance and great partnership" under which it was to "communicate openly and honestly with the community to build a relationship based on transparency, understanding, trust and respect".

SOURCE:
Central Coast Council agenda 2.8, 25 Jan 2022

GUST founder wins Council environment award

Founding member of the Peninsula's Grow Urban Shade Trees group Ms Debbie Sunartha has won the Environment Award in this year's Central Coast Council Australia Day awards.

Council's Community and Culture Unit manager Mr Glenn Cannard said the annual awards were a chance to recognise the achievements of individuals who had made a positive contribution to the community.

"Debbie Sunartha has been quietly and consistently contributing to the environment on the Peninsula since 2015," he said.

"Debbie was instrumental in the design and coordination of the Runway Park upgrade in Trafalgar Ave, Woy Woy.

"Debbie recently funded and project managed a park upgrade in Australia Ave, Umina, with the park now a native garden designed to support local wildlife and bees."

Council administrator Mr Rik Hart said of the council's Australia Day awards: "To be recognised for your work and contribution to the local community at such a level, is a great achievement.

SOURCE:
Media release, 20 Jan 2022
Glenn Cannard, Central Coast Council



Mitch wins Council business award

The membership director for the Rotary Club of Brisbane Water Mr Mitchell Gordon has won Central Coast Council's "business connecting communities" Australia Day award.

Council's Community and Culture Unit manager Mr Glenn Cannard said Mr Gordon was involved in establishing Woy Woy Antiques and Collectables in June 2020.

The store has since moved to Gosford.

"The business was established to assist local charities affected by the ongoing pandemic, with a percentage of profits going to a different not-for-profit organisation each month.

"The store has raised thousands of dollars for local charities.

"The store also collects dry goods and personal care items for Coast Shelter, as well as offering volunteering opportunities for people living with disability and supports local artists and authors by selling their work."

SOURCE:
Media release, 21 Jan 2022
Mitchell Gordon, Woy Woy Antiques

Having moved to Umina Beach from the leafy Hornsby Shire eight years ago, it has been my aim to plant trees to try and duplicate the shady streets of the northern suburbs.

My long-time partner Gary Machin and I began planting verge trees at a time when the Gosford Council gave these away for free.

With that policy no longer in place, a few like-minded women got together to form the group called, Grow Urban Shade Trees, fondly known as GUST.

By engaging with residents who also want shade in their street, the GUST team and I have helped coordinate the planting of over 650

'Planting for leafy, shady streets'

verge trees.

Another project of mine, with approval from council, was the formation of the South St Dunecare group which can boast a flourishing of native vegetation which now covers a large area of what was once a bare dune.

I teamed up with Melissa Chandler to kick start the vision of the barren Trafalgar Ave Park becoming a play space for families.

With my teacher's hat on, I organised and helped supervise Woy Woy South school groups to participate in the planting of native trees and shrubs in the park.

With my application for a Federal Environment Grant approved, I was able to transform Guyangil Park in Australia Ave from a neglected reserve into a native habitat play park for young children to enjoy.

Each year, I endeavour to organise an event to mark National Tree Day.

The GUST team supported by willing families have had many successful tree planting days.

One of these was the installation of new trees and native plants at the Sydney 2000 Park.

It gives me great joy to have the

energy and capacity to be able to make a lasting contribution to our local Peninsula environment.

All of these projects could not have been achieved without a loyal band of volunteers who answer my call for help and have continued to plant, weed and water over many years. Thank you.

It warms my heart to know that we have so much support from the community.

This award is further appreciation of the lead that we are taking in re-greening the Peninsula, providing shade, bird habitat and more liveable, cooler suburbs.

SOURCE:
Media statement, 21 Jan 2022
Debbie Sunartha, GUST



Liesl Tesch MP

Member for Gosford

How can I help?



- Schools and education
- Community Recognition Awards
- Anniversary & birthday messages
- Fair Trading
- Hospitals and health
- Main roads
- Police and Emergency Services
- Public housing
- Trains and public transport



20 Blackwall Road, Woy Woy NSW 2256

Gosford@parliament.nsw.gov.au

(02) 4342 4122

Authorised by Liesl Tesch, 20 Blackwall Road, Woy Woy NSW 2256. Funded using Parliamentary Entitlements.

Forum

Dangerous intersection becomes statistically safe

It seems that traffic planners require blood sacrifices in the way of fatal accident statistics before they will deem an intersection to be officially dangerous and therefore worthy of remediation.

What these people obviously fail to realise is that sometimes an intersection is so obviously dangerous that it is studiously avoided by the majority of drivers and thus becomes statistically safe.

Not wishing to boast but I have driven in many different countries and cities around the world including London, New York, Los Angeles, Hong Kong and even Sydney.

However I can't remember a more ludicrously dangerous intersection than one right here on the Peninsula.

The intersection of Rawson Rd and Railway St, right before the railway crossing, is the one I'm

referring to.

It can be nothing short of a nightmare for drivers trying to turn right from Railway St into Rawson Rd, heading towards Woy Woy Rd.

A driver in this situation has to give way to traffic from three different directions – from the left and right on Rawson Rd and straight ahead from Railway St.

Not only that, they are also forced to ratchet their head around to a totally unnatural angle, reminiscent of "The Exorcist", to check for traffic coming from the left.

As can be seen on Google maps the angle is so acute that, depending on the design of your car, you can find yourself looking through the rear passenger window.

If your driving a van or some other vehicle without a rear passenger window you can find yourself unable to see traffic coming from the left at all.

I have witnessed more than one near miss at this intersection due

to drivers focusing so completely on the difficult left and right check that they completely forgot about head-on traffic.

Of course the result of this situation is that most sensible drivers wishing to travel up Woy Woy Rd towards the motorway will ignore the more direct route and the well meaning instructions of Google navigation, and use a route that brings them to this intersection via Rawson Rd rather than Railway St.

By doing this they then have right of way at the intersection.

Of course this does rather skew the figures on other intersections that facilitate this strategy.

The main one that comes to mind is the Ocean Beach Rd intersection with Rawson Rd.

What's that I hear you say?

Oh! So they're spending about a gazillion dollars on that intersection to "fix" things.

Hmm!

SOURCE:

Email, 23 Jan 2022
Frank Wiffen, Woy Woy

Treeless suburbs are literally killing us

Treeless suburbs are literally killing us, heat being the single biggest killer above floods, fire and the road toll, according to an ABC TV documentary (Why Australia's suburbs are so hot) on January 16.

While making road and roof colour lighter will help reduce urban heat, planting and maintaining large trees is the best and easiest

thing we can do right now.

So spread, spread, spread the word.

Lobby council for tighter greening controls and community education and fight for floor space ratios that accommodate a shade tree.

Its time for smarter urban planning!

SOURCE:

Social media, 16 Jan 2022
Jenny Wilder, Woy Woy

Responsibility remains for Rawson Rd level crossing

Thank you for keeping us abreast of developments with Labor's fast train announcement ('No mention of Woy Woy in Labor fast rail announcement', 10 January 2022, page 4).

I note that Dr Gordon Reid "... would not be drawn on questions of whether the project would include the replacement of the Rawson Rd level crossing".

This current proposal refers to Gosford and Wyong as the "obvious possibilities" as stops, and the 2013 proposal proposed

one stop on the Central Coast, at Ourimbah.

So I guess we can presume that the local trains will continue to run as per usual, to enable us to link in to the proposed fast trains at either Gosford and Wyong and/or Ourimbah?

In which case, the State Government still has a responsibility to meet its commitment to replace the deadly Rawson Rd level crossing.

SOURCE:

Email, 14 Jan 2022
Stephanie Short, Woy Woy

More scrutiny needed in absence of character controls

It's time for a reality assessment of planning.

The Character Development Control Plan has been in existence for about three decades.

What has the Plan achieved to date?

There are two approved developments that have created new character on the Peninsula.

I refer to the extension to the Peninsula Village and the aged care facility being built on Hillview St, Woy Woy.

Neither development has similarities to the previous character on the sites.

In essence, the Plan is worthless, and has been since it's adoption.

If this is true, why is the Plan still

active?

The problem is not the planning instrument, but the many layers of authority that can overrule planning instruments.

In other words, all planning instruments have power that is surpassed by those in authority.

The Regional Plan is a perfect example.

At the outset that plan was created to increase development and population on the Central Coast.

Did either of these matters require any lobbying as has been the case with other matters such as the northern COSS and the objection to selling vital council assets.

In other words, there is a

hierarchy possessing enormous power to influence planning matters.

This has been seen at various levels of the development assessment process.

One alarming problem of bypassing character controls is that no other assessment is applied in its place.

Additional information should be required to demonstrate the impact of the development, and the new character it is creating.

Consider the additional impact across all sectors as a higher density development is created.

For example, the Hillview St facility which replaces a fully-vegetated site.

Every issue should require additional research, as the development is an additional imposition to the site, area, and region.

While those in power have the authority to overrule planning instruments, planning will remain a fantasy, subject to change, depending on the interests of those in authority.

We have a perfect example in the Character Development Control Plan.

Single level cottages have been replaced with a consortment of designs, with the intention of increasing population density on the Peninsula.

SOURCE:

Letter, 12 Jan 2022
Norm Harris, Umina



Arts and crafts classes to start next week

Ettalong Beach Arts and Craft Centre Term 1 classes will start during the week beginning January 31, according association president Mr Peter Mulholland.

Annual membership fee will be \$25 this year, with social session \$7 each.

Class fees will be \$195 for classes with nine three-hour sessions totalling 27 hours per term.

Classes with 18 hours per term, either nine two-hour sessions or

six three-hour sessions, will cost \$130.

"Payment of fees will be available by electronic transfer," said Mr Mulholland.

"An online payment form (available at the centre) will need to be filled out.

"Cheque and cash payments are still accepted.

"Credit card or debit card payments are not accepted.

"Double vaccination status is required for all tutors and students.

SOURCE:

Social media, 15 Jan 2022
Peter Mulholland, EBACC

Public Notices

Car Boot Sale
Woy Woy Peninsula Lions Club

Jan 30

7am to 1pm

Great variety of stalls -
BBQ, Tea & Coffee.

Vendors Welcome - \$20 per car
Now at Dunbar Road Car Park
NB stall sites not open until 6.00am
Cnr. Ocean Beach Road Woy Woy

Always Last Sunday
(no events in April or December)

Enq: 0478 959 895
COVID SAFE

Peninsula News
Community Access

offers

**Classified
advertising
at affordable
rates**

Contact us for details:

4243 5333

advertising@peninsula.news.

New chief at Umina aged care home

A Umina aged care home has appointed a new chief executive.

Peninsula Villages has announced new chief executive officer Mr Colin Osborne.

Prior to joining Peninsula Villages, Mr Osborne previously served as chief executive Anglican Care, an aged care provider in Newcastle, the Hunter, Central Coast and Mid Coast.

During his time at Anglican Care from 2012 to 2020, the organisation grew by 40 per cent to have 12 residential aged care homes, eight retirement villages and 400 "community consumers".

Prior to his role in the aged care industry, Mr Osborne had a career in senior management roles in the acute hospital industry, culminating with his appointment as chief executive of the Calvary Mater Hospital where he was instrumental in its redevelopment.

Mr Osborne was also president of the Confederation of Australian Motor Sport for eight years to 2008 and has maintained his interest in motor sport.

Peninsula Villages board chair Ms Jan-Maree Tweedie said: "Colin is a passionate and talented leader, bringing highly relevant aged care experience and skills to the position following his tenure at Anglican Care for more than eight years.

"Colin is an advocate for improving the care and quality of life for all of our residents and recognises the essential role that each and every member of our team plays in delivering choice to those they work with.



"Colin has already displayed a fantastic commitment to our values and is leading the team for a new era in 2022," said Ms Tweedie.

Ms Tweedie said Mr Osborne will be supported by an executive team with Ms Jackie Bennett as chief operating officer, Ms Louise Clarke as executive care manager and Ms Nicola Burton leading organisational development.

"I am honoured to lead this innovative, community-focused organisation and have already been astounded by its dedication to being an aged care provider that breaks the mould when it comes to delivering care to its residents," said Mr Osborne.

"Peninsula Villages is a progressive community organisation that has been driven by the passion and I hope that I can continue this commitment and bring new skills and enthusiasm to the role," he said.

SOURCE:
Media release, 17 Jan 2022
Colin Osborne, Peninsula Villages

New health board members, as Paul Tonkin bows out

Central Coast Local Health District has announced three new appointments its board.

They are Professor Tracy Levett-Jones, Dr Brent Jenkins and Mr Timothy Ebbeck, replacing four board members whose tenure finished in June or December.

Among the departing board members was Woy Woy lawyer Mr Paul Tonkin, who served on the board for 27 years, the last 10 as chair.

None of the incoming board members have links to the Peninsula, although continuing board member Ms Jennifer Eddy was chief executive of BlueWave Living in Woy Woy for 28 years.

The other leaving members were Emeritus Professor Maree Gleeson, Dr Sean Kelly and Dr Phil Hayes.

Mr Tonkin was presented with a booklet on his departure, describing his 27 years with the board.

"I was pretty chuffed by the



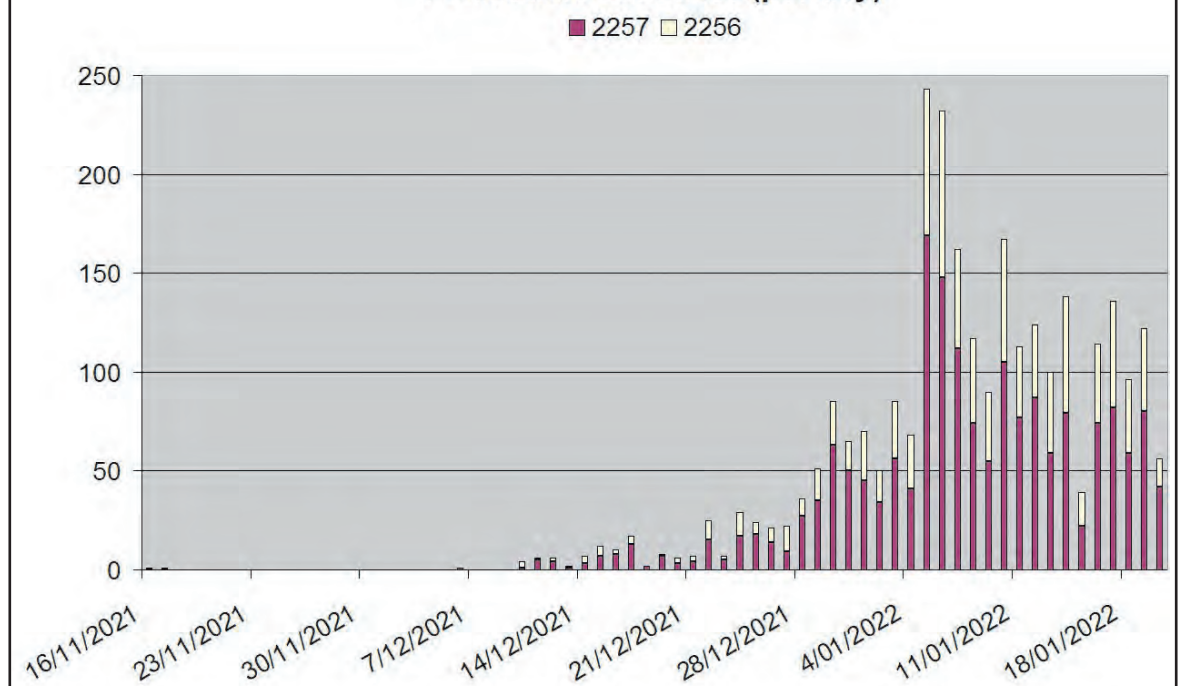
effort," he said.

Central Coast Parliamentary Secretary Mr Adam Crouch congratulated the three new board members on their three-year appointment.

"I would also like to acknowledge the contribution of the former board members and thank them for their time supporting the team at Central Coast Health."

SOURCE:
Media release, 19 Jan 2022
Donald McLellan, CCLHD

Peninsula PCR Cases (per day)



Coronavirus cases total 1583 in two weeks

A total of 1583 coronavirus cases have been reported through polymerase chain reaction (PCR) tests over the 14 days to January 20.

Numbers reported through rapid antigen tests were not available.

The most recent figures available prior to publication show 576 cases in the 2256 postcode area over the 14 days.

Highest numbers recorded were 62 on January 10, 59 on January 14, and 54 on January 17, down from 84 on January 6.

In the 2257 postcode area, 1007 cases were recorded for the fortnight.

Highest numbers recorded were 112 on January 7, 105 on January 10, and 87 on January 12, down from 169 on January 5.

Government figures showed 460 active cases in the 2256 postcode and 797 in 2257.

Total numbers recorded since the start of the pandemic were 1017 in the 2256 postcode and 1934 in 2257.

SOURCE:
Website, 23 Jan 2022
Covid data and statistics,
NSW Government

Virus hospital admissions peak at 96

Central Coast hospital admissions for the coronavirus peaked at 96 last Wednesday, January 19.

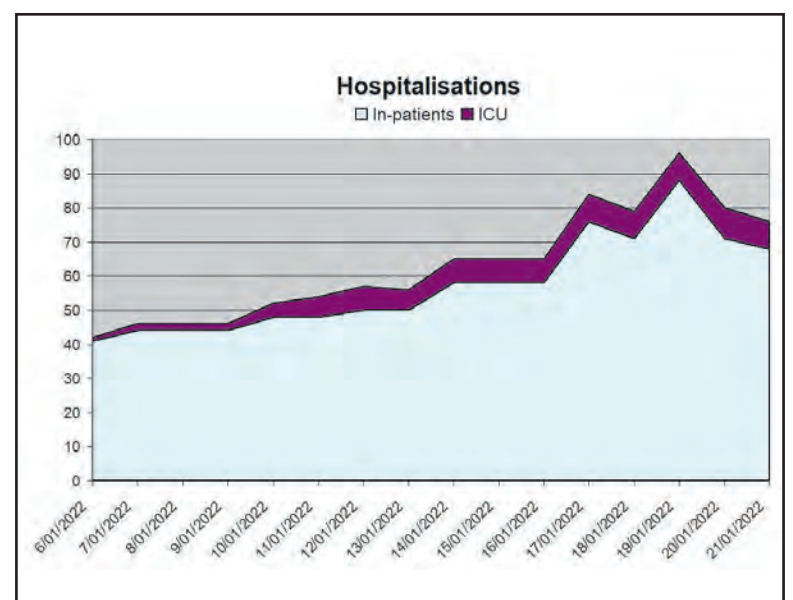
Of these, 88 were in "in-patient units" and eight were in intensive care.

On January 6, there were 41 in-patients and one person in intensive care.

Last Friday, a total of 76 were in either Gosford or Wyong hospital, with eight in intensive care.

The graph shows the increase in numbers, based on figures released by Central Coast Secretary Mr Adam Crouch.

SOURCE:
Social media, 21 Jan 2022
Adam Crouch, Central Coast Secretary



Staff shortages hit businesses

A Woy Woy restaurant has had to cut its trading hours due to a shortage of staff.

Woy Woy Fishermen's Wharf announced in a social media post on January 7 that

"We can only open our restaurant for lunch for the foreseeable future.

"We will trade five days for lunch 12-3pm, Thursday to Monday.

"Our take away and fresh seafood store will continue trading seven days.

"The take away will continue to open until 7pm on Friday and Saturday."

Meanwhile, the PCYC in Umina

Beach has asked people to leave a message if they cannot get through.

"Like quite a few businesses, we are short-staffed at the moment," the centre said in a social media post.

"If you have called and left a message, we will get back to you as soon as we can.

"Please note that we will always make sure that there is adequate supervision for the kids during the school holiday programs."

SOURCE:
Social media, 7 Jan 2022
Woy Woy Fishermen's Wharf
Social media, 18 Jan 2022
PCYC Umina Beach

Dementia cafe

The Rotary Club of Brisbane Water has delayed its Dementia Cafe, Dcafe, until Monday, February 14.

"We are going to hold our next Dcafe outdoors 10am to 12pm at Jasmine Greens, Sydney Ave, Umina," said club president Ms Cherie Simpson.

"We would like to welcome people living with dementia and their carers to join us for a cuppa and chat in a caring environment.

Bookings essential and may be made with Heather on 0414 446 177 or Di on 0404 147 743.

SOURCE:
Newsletter, 20 Jan 2022
Cherie Simpson, Rotary
Brisbane Water

Southern Spirit cricket results

Results of games played by Southern Spirit Cricket Club at the weekend were:

First Grade: Terrigal 105 (LE Cork 3/13, HS Jaenke 3/32, LA Bull 2/9) v Southern Spirit 6/107 (J Leary 42*, LE Cork 25).
T20: Narara 62 (CA Di Blasio 3/17, R Watson 3/26, LA Bull 2/8) def by Southern Spirit 4/159cc (LM O'Farrell 57, S Higgins 44).
Second Grade: Southern Spirit and 5/147 (S Dickson 55, N Grainger 41) v Terrigal 0/0 and 146 (JD Johnston 4/12, J Jewiss 3/18, MR Wright 2/23).
Fourth Grade: Brisbane Water drew Southern Spirit.
Under 14b: Warnervale 5/99cc (A Tod 2/11) def Southern Spirit 98 (A Tod 32*).
Sixth Grade: Southern Spirit 9/185 (M Scanlan Jr 76, J Channon

53) def Warnervale 126 (BT White 3/8, JF Taylor 3/14, C Murchie 2/22).
Eighth Grade: Southern Spirit 2/92 (SJ Collins 51*) def Terrigal 91 (S Markham 3/11, S Collins 2/5, MJ Donnelly 2/7).
Under 12b: Southern Spirit Purple 4/103cc def The Entrance 6/67cc (J Golds 2/5, J Sceats 2/18). Southern Spirit White 5/102cc def Terrigal Maroon 51 (C Shaw 2/3).
Ninth Grade: Southern Spirit 116 (BT Waters 38) def The Entrance Blue 69 (MJ Henderson 4/11, E Zadravic 2/2, R Sullivan 2/19).
Womens 2nd Grade: Southern Spirit 3/73cc def by Lisarow White 4/148cc (M Fiddock 2/28).
SOURCE: Website, 23 Jan 2022 Southern Spirit Cricket Club

Previous results

Results of games played by Southern Spirit Cricket Club prior to last weekend were:

First Grade: Southern Spirit 174 (R Watson 51, J Leary 31, BN Duffy 30) def Wyong 147 (LE Cork 3/25, R Watson 3/30, LA Bull 2/22).
T20: Narara 8/58 (CA Di Blasio 3/17, R Watson 2/26) v Southern Spirit 4/159cc (LM O'Farrell 57, S Higgins 44).
Glenn Rowlands Shield: Kincumber2/69 (LE Cork 2/10) def Southern Spirit 68 (J Leary 41).
Second Grade: Wyong 8/260 dec (KJ Handley 4/48, MR Wright 3/22) def Southern Spirit 72 (JD Johnston 38, LC McIntyre 34, M Day 4/27, T Hatch 2/26).
Masters - Over 40s: Warnervale drew Southern Spirit.
Fourth Grade: Southern Spirit 42 def by Kincumber1/43.
Male Youth League: Southern Spirit 9/57cc def by Kincumber 9/58 (RD Sharma 4/8, JD Johnston 2/7).
Under-16: The Entrance 5/113 (H Tomlinson 2/14) def Southern

Spirit 6/112 (K Warner 27*).
Under-14b: Wyong 3/72 (L Papps 2/3 def Southern Spirit 70 (A Cattley 33*).
Sixth Grade: Lisarow 6/120cc (M Bull 3/7) def Southern Spirit 9/116 (MW Cunningham 28, J Channon 26).
Seventh Grade: Kincumber 8/134cc (KA Barnes 2/20) def Southern Spirit 10/117 (D Hancock 43).
Eighth Grade: Southern Spirit 126 (C Hubbard 34, A Zadravic 32) def by Lisarow Black 8/127 (G Simon 3/20, MJ Donnelly 2/24).
Under-12b: Southern Spirit White 95 (E Zadravic 30) def by Kincumber Stars 4/96cc. Southern Spirit Purple 62 def by Terrigal Gold 4/210cc.
Ninth Grade: Southern Spirit 56 def by Lisarow 8/105cc (MJ Henderson 2/17, AR Witten 2/21).
Womens 2nd Grade: Southern Spirit 5/83 (J Moody 25*) def Warnervale 2/79cc.

SOURCE: Website, 21 Jan 2022 Southern Spirit Cricket Club

Under-70 bridge results

Brisbane Water Bridge Club has held under-70 competition over two weeks.

Results from Monday, January 10, were:
1 Tracey Dillon - Dieter Mucharsky 60.0 (60.00 per cent), 0.18 green points.
2 Graham Woof - Chris Spikesman 58.0 (58.00), 0.13.
3 Michael Cunningham - Linda Cunningham 54.0 (54.00), 0.09.
4 Blair Glass - Ian Newton 53.0 (53.00).
5 Peter Wheatley - Tony Langmead 46.0 (46.00).
6 Maureen Lockwood - Fiona

Galea 29.0 (29.00).
Results from Monday, January 17, were:
1 Marcelle Goslin - Jim Routledge 59.0 (59.00), 0.18.
2 Roz Harvey - Ian Newton 58.0 (58.00), 0.13.
3 Peter Wheatley - Tony Langmead 51.0 (51.00), 0.09.
4 Fiona Galea - Maureen Lockwood 45.0 (45.00).
5 Anne Birt - Dieter Mucharsky 44.0 (44.00).
6 Cheryl Pearse - Jenni Murray 43.0 (43.00).

SOURCE: Website, 18 Jan 2022 Brisbane Water Bridge Club



Outrigger club in Newcastle regatta

The Peninsula-based Central Coast Outrigger Canoe Club participated in two events at the Newcastle Pasha Dasha regatta was held on Saturday, January 15, at Horseshoe Beach.

The OC6 crew paddled the eight kilometre short course event, taking paddlers out past Nobbys

Lighthouse into a challenging two metre swell.

The crew remained upright, finishing the race in second place overall and first place in the Senior Master Mixed category.

The regatta was also an opportunity for the new and seasoned paddlers to take part in the changes relay event over three of the five times five kilometre

distances.

Club steerer Pam Illiffe said: "Newcastle put on a great regatta.

"With concerns of last-minute cancellations due to Covid, clubs managed to put teams together at the 11th hour.

"Everyone was so happy to see each other on the water."

SOURCE: Media release, 17 Jan 2022 Debbie Sunartha, CCOCC

Umina Beach holds Minor Pairs final

Umina Beach Men's Bowling Club played its Minor Pairs final on January 16.

The final was played between the pairs of Tom Burgmann and Lee Cribbs and of Ian Jarratt and Victor Gauci.

Ian and Vic got out to an early 8-0 lead, before Tom and Lee recovered to get back into the game.

"There were some great bowls played on quite a quick green, with a gentle breeze," said club secretary Mr Peter Springett.

"Each team picked up one and two shots, but Ian and Vic maintained their lead throughout the game and only went behind on one end.

"Tom and Lee held in there and kept digging away, but dropped four shots near the end of the game and were playing catch-up after that."

Ian Jarratt and Vic Gauci won the tight contest 19-16.

Pictured are Vic Gauci and Ian Jarratt, and Lee Cribbs and Tom Burgmann.

SOURCE: Social media, 16 Jan 2022 Peter Springett, UBMBC



Twilight pairs at Ettalong

Ettalong Bowling Club is holding twilight pairs on each Tuesday from 5.30pm until dusk.

The evenings are open to registered bowlers.

The fee is \$5 with all fees going to the rink draw.

The first major draw is \$ 80

and the consolation draw the remainder, if any.

If the total entry fees exceed \$140, the first major draw will be 60 per cent of the total and the consolation draw the remainder.

SOURCE: Social media, 12 Jan 2022 Hans de Jong, Ettalong Bowling Club

'Faster' bike ride from Woy Woy

The Central Coast Bicycle User Group will hold a "Faster Brisbane Water Loop" ride from Woy Woy on Wednesday, January 26.

The event will start at 7:30 at Woy Woy Fishermen's Wharf.

Leader Mr Alan Corven said it was "a slightly faster paced ride

around Brisbane Waters, some on shared paths (slower sections) and some on roads (faster sections)".

"Covid-safe rules apply so don't come if you are unwell, a close contact or Covid positive.

"Bring a mask and check-in.

"Bring your own water, snack and tools."

"There will be a coffee stop

probably at the end, but it will be decided on the day."

Ride distance will be 45 kms at an average pace of 24-26 km/h, and places must be booked.

For further information, contact Alan on 0414 538 977.

SOURCE: Social media, 20 Jan 2022 Alan Corven, CCBUG