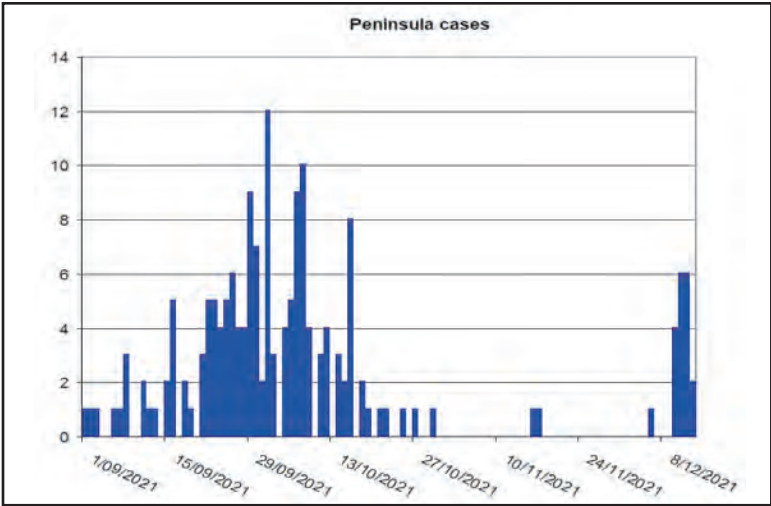




Gingerbread office

The school office at Woy Woy South Public School has been getting ready for Christmas, transformed into a gingerbread house.

SOURCE: Social media, 6 Dec 2021
Matt Barr, Woy Woy South Public School



Peninsula has 18 cases in four days

The Peninsula has recorded 16 new coronavirus cases over last weekend (December 10-12), and two more on Monday.

Of these, 11 cases were recorded in the 2257 postcode area.

Prior to these, only one case

had been reported for 2257 since October 31.

The other seven cases were recorded in the 2256 postcode area.

Prior to these, only two cases were recorded since October 22.

SOURCE:
Website, 14 Dec 2021
Covid data and statistics,
NSW Government

For the Peninsula community

Only Peninsula advertising
Only Peninsula News

Council seeks feedback on Rawson Rd intersection plans

Central Coast Council has invited feedback on plans to upgrade the intersection at Ocean Beach and Rawson Rds, Woy Woy.

Central Coast Council infrastructure director Mr Boris Bolgoff, said the plan was to replace the existing single-lane roundabout with a signalised intersection.

"Traffic delays in the area will improve immediately after completion of the project in 2026.

"We estimate a 66 per cent improvement, with the average maximum vehicle queue length reduced by over 360 metres."

Council administrator Mr Rik Hart said an intersection upgrade at this busy location had been identified as necessary.

"Council is liaising directly with the owners of properties located adjacent to the intersection which may be impacted by the works, and I encourage all community members to have their say on this major upgrade," Mr Hart said.

Member for Robertson Ms Lucy Wicks has urged community members to review the plans and have their say.

"We know how important roads

upgrades are on the Peninsula and the Rawson Rd and Ocean Beach Rd intersection is a major problem during peak traffic times," Mrs Wicks said.

"Projects like this, which will improve traffic flow and safety at intersections that have become bottlenecks, are vital for a growing region such as the Central Coast."

Construction of the \$32.56

million project, paid for by the Federal Urban Congestion Fund, is expected to start in mid-2024 and finish by mid-2026.

Plans and the opportunity feedback is available at the council website yourvoiceourcoast.com/obrawson.

SOURCE:
Media release, 9 Dec 2021
Rik Hart, Central Coast Council

Council praises Morrison government

Central Coast Council has issued a joint media release which praises the Morrison Government for its "commitment to progress critical infrastructure projects across the country".

In the release, Federal Minister for Urban Infrastructure Mr Paul Fletcher said the project would help improve travel times and increase road and pedestrian safety.

"The Morrison Government is getting on with delivering infrastructure projects that

improve congestion and safety for commuters across Australia, making it easier for them to move around our capital cities and ensuring they get home quickly and safely."

The purpose of the release was to invite feedback on plans to upgrade the intersection at Ocean Beach and Rawson Rds, Woy Woy, with a grant from the Federal Urban Congestion Fund.

SOURCE:
Media release, 9 Dec 2021
Rik Hart, Central Coast Council

All the news that didn't fit in print

For each issue of Peninsula News, we have more news items about the Peninsula than we have space to print.

Peninsula News EXTRA is an electronic supplement to printed edition, which contains these extra items.

This is produced with the same layout as the print edition, but is in PDF form only, published on the Thursday following the print edition.

As advertising support allows, these pages will be included in the print edition.

Volunteer opportunities are available in all aspects of the newspaper's production, from news gathering and photography, through to seeking advertising and administration.

Offers of assistance are always welcome.

SOURCE:
Mark Snell, 1 Nov 2021



Get notified
SIGN UP HERE
<http://bit.ly/PNExtra>

The **EXTRA**
DOWNLOAD NOW
<http://peninsula.news/extra.pdf>

Next issue: **Monday, January 10**

NEWS: contributions@peninsula.news

Peninsula News
Community Access

Peninsula News is a fortnightly community newspaper for the Woy Woy Peninsula, owned by The Peninsula's Own News Service Inc, a local non-profit incorporated association. Its aims include providing a viable, non-partisan news medium and forum exclusively for the Peninsula and developing a strong sense of community on the Peninsula.

Editor: Mark Snell

editor@peninsula.news

Advertising: Frank Wiffen

advertising@peninsula.news

NEXT EDITION: Peninsula News 535

Deadline: Thursday, January 6

Publication date: Monday, January 10

CONTACT DETAILS

NEWS: contributions@peninsula.news

ADVERTISING: advertising@peninsula.news

PHONE: 4342 5333 - Please leave a message

POSTAL ADDRESS: PO Box 585, Woy Woy NSW 2256

Please note: Peninsula News currently has no paid employees, and it may take a little time for us to get back to you. Our volunteers usually have other jobs and commitments, which compete for their time.

EMAIL ISSUES?

When emailing us, you will note that the domain name is PENINSULA.NEWS only. There is no .com or .com.au. If your email bounces or does not appear to have reached us, please check the address and try again. If this still does not work, try our old fallback address or call us by phone and leave a message.

Fallback email address: editor@peninsulanews.asn.au

Editorial policy and guidelines

At its heart, Peninsula News is a community effort.

It welcomes and relies on the contributions provided voluntarily and at no cost by local organisations, groups and residents.

The newspaper aims to be accessible to the community - both through making its columns accessible to community groups and by having copies available in accessible locations, including through its website.

The following policies and guidelines are designed to support the aims and standards of the newspaper.

Locality

The newspaper's editorial policy reflects a desire to reinforce the Peninsula's sense of community.

To qualify for publication, articles must have specific relevance to the Peninsula. For example, they must be about activities or events happening on the Peninsula or be organised by or involving Peninsula people.

The newspaper is not regional or national in nature, so regional or national issues will not be canvassed except as they affect the Peninsula.

Regional sports will only be covered from the perspective of Peninsula clubs. Regional plans will only be aired in the context of their ramifications for the Peninsula.

Peninsula News aims to be inclusive of as much of the Peninsula community as possible.

Readability

To ensure that the newspaper serves its purpose, it must be readable and represent the interests and activities of the community in its content.

Contributions to the paper are edited to consistent standards of readability. Guidelines are available for intending contributors.

All items will be dated. They must contain the name of the author to whom the contribution may be attributed, with their first name spelt out, along with their suburb or organisation. Anonymous contributions will not be accepted.

Forum letters

The Forum section provides the opportunity for readers to express their views on any aspect of Peninsula community life, with the aim of reflecting the community's diversity of opinion.

Nevertheless, letters may be edited for readability, including for length, spelling and grammar, and to avoid legal liability on the part of the newspaper, or they may be declined altogether.

Contributors are asked to keep their

contributions to the matter at hand, and to focus on the issues and not abuse or insult others.

Other than in the case of holding public figures to account, criticism of others (as opposed to criticism of particular opinions) is unlikely to be published in the interests of facilitating the expression of a diversity of views.

All letter writers need to supply name, address and contact details. Only name and suburb will be published.

Contributors who do not wish the wording of their letter to be changed at all should make a note to this effect when submitting their letter. In some cases, this may result in the letter not being published.

Corrections

We try to be as accurate as possible. However, mistakes can still slip through.

If you believe we have got something wrong, whether an error of fact or interpretation, we ask that you write to us by email with details for publication. These corrections may appear as Forum letters or as news items and should conform to our requirements for news and Forum contributions.

Source lines

Peninsula News includes "source lines" at the end of each article which aim to provide readers with information about where and how we came across the information, so that they might judge for themselves the veracity of what they are reading.

It should not be assumed that the article is a verbatim reproduction of the source. Similarly, it should not be assumed that any reporter listed is necessarily responsible for writing the whole news item. Source lines are not by-lines.

Often articles come from a number of sources. They are edited for readability and reader interest and given different headings, and consequently can be expressed quite differently from the source material.

Peninsula News usually receives its information in three ways: It is sent to us by someone wanting to promote their activities; it is sent to us in response to our inquiries; or it comes from a newsletter or other document to which we have access.

Sometimes we may interview a person or report what they said at a meeting.

The following descriptions are used:

Media Release - unsolicited contributions.

Media Statement - sent in response to our questions.

Website or Social Media - information published online.

Newsletter or Report - published in print or online.

Interview or Meeting - statements recorded by a reporter.

Forum contributions may be: Email if sent electronically and Letter if written on paper.

December market cancelled

Organisers of a market in Woy Woy have decided to cancel its December market "due to the lockdown being extended to December 15 for some people".

The market would be held in January "so that everyone is able to attend".

The Umina Beach Markets will still go ahead on December 19.

SOURCE:

Social media, 1 Dec 2021
Woy Woy Waterfront Markets

Bays group confirms art show dates

The Bays Community Group has confirmed that The Bays Art Show and Exhibition will be held on February 11, 12 and 13.

"We are delighted to be able to confirm the new dates for the Bays Art Show and Exhibition," said president Ms Gwynneth Weir.

"This will now be held on Friday, Saturday and Sunday, February

11, 12 and 13.

"All tickets purchased for the original dates, and all artists' entry fees, have been carried over to these new dates.

"We can all look forward to a great weekend of art and socialising," she said.

SOURCE:

Media release, 9 Dec 2021
Gwynneth Weir, The Bays Community Group



Men's Shed holds garage sale

Umina Beach Men Shed's held an under cover "Gara/ Shed Sale" on Saturday, November 27.

"Due to the range of wet and windy weather conditions over the last four or five weeks, we specifically looked for a venue that we could hold the sale undercover.

"We were very fortunate to secure the undercover car park premises at the old Woy Woy Leagues Club.

"It was just as well, as it rained on and off most of the Saturday; and understandably attendance numbers were down a bit due the weather conditions.

"Even so we had a good days selling and converting lots of items into cash that then goes directly to help offset the expenses and outlays of running the Shed.

SOURCE:

Newsletter, 6 Dec 2021
Vic Brown, Umina Beach Men's Shed

November was second wettest in 17 years

November's rainfall of 192.2mm was the second highest in 17 years, according to figures supplied by Mr Jim Morrison of Umina.

Average for the month is 93mm. The wettest November was in 2013 when 206.7mm was recorded.

So far this month, the Peninsula has recorded 74.1mm, including a fall of 44.6mm for the 24 hours to 9am on December 10.

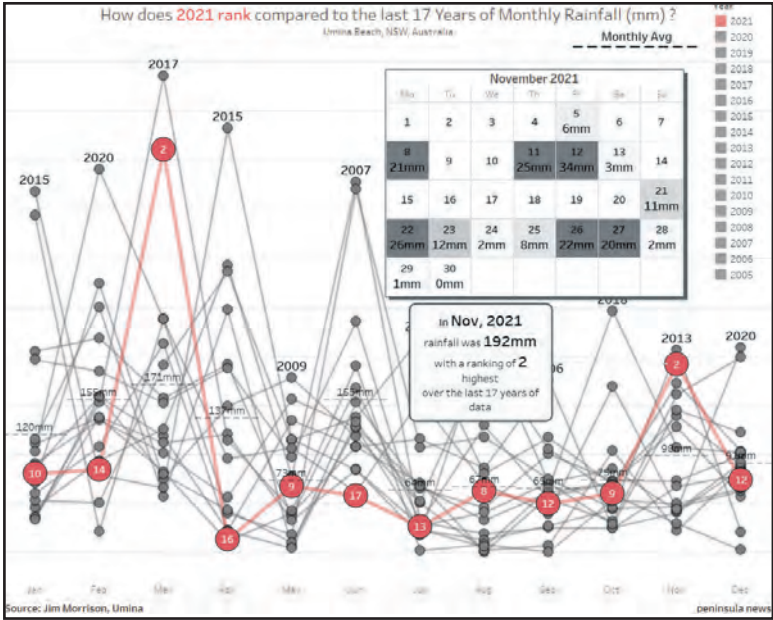
The average December rainfall is 92mm.

The cumulative total for the year is 1182.7mm.

The average annual rainfall is 1278mm.

SOURCE:

Spreadsheet, 10 Dec 2021
Jim Morrison, Umina



TIDE TIMES and Heights

Thu, Dec 2	Sun, Dec 5	Wed, Dec 8	Sat, Dec 11	Tue, Dec 14
0116 0.20	0330 0.20	0035 0.84	0342 0.83	0000 0.19
0735 1.20	1000 1.44	0608 0.25	0924 0.34	0625 0.98
1411 0.24	1708 0.13	1238 1.32	1534 1.00	1246 0.32
1955 1.02	2240 0.92	2000 0.12	2236 0.16	1828 0.82
Fri, Dec 3	Mon, Dec 6	Thu, Dec 9	Sun, Dec 12	Wed, Dec 15
0200 0.20	0419 0.21	0135 0.82	0443 0.86	0037 0.20
0823 1.32	1051 1.44	0709 0.29	1035 0.35	0707 1.04
1511 0.20	1806 0.12	1335 1.21	1635 0.92	1341 0.30
2050 1.00	2337 0.88	2056 0.13	2320 0.18	1918 0.79
Sat, Dec 4	Tue, Dec 7	Fri, Dec 10	Mon, Dec 13	Thu, Dec 16
0244 0.20	0512 0.23	0238 0.81	0537 0.92	0113 0.20
0911 1.40	1144 1.40	0815 0.32	1145 0.34	0745 1.10
1610 0.16	1903 0.11	1434 1.11	1733 0.86	1429 0.27
2145 0.96		2147 0.14		2004 0.78

Council proposes 10-year leases of community facilities

Central Coast Council is proposing to offer 10-year leases to two community facilities on the Peninsula.

It proposes to lease to Coast Community Connections Ltd facilities at the Peninsula Community Centre at 93 McMasters Rd, Woy Woy.

Under one lease, the company may offer community services, offices and community aged care hiring.

Under a second lease, it may offer childcare, and before and after school care.

The council is also offering a 10-year lease to Southern and Ettalong United Soccer Club for use of the community sports clubhouse at 58 Alpha Rd, Woy Woy.

The council is accepting submissions about the proposals until January 16 using the council's online submission form, by email to ask@centralcoast.nsw.gov.au or by post to PO Box 20, Wyong NSW 2259.

SOURCE: Website, 10 Dec 2021 Public notices, Central Coast Council

Rubbish cleared from Woy Woy Bays area

The Clean4Shore marine clean-up group removed rubbish from the Woy Woy Bays area and near the Spike Milligan Bridge on Friday, December 3.

On a bright sunny day, the barge headed into Woy Woy Bay. "Venturing into Waterfall Bay for the first time in many years, the sheer beauty of this waterway had the team wondering if we were in total wilderness," said coordinator Mr Graham Johnston.

"A small beach on the right bank had an old derelict vessel moored very close to the foreshore.

"Surprisingly bulk litter was on the foreshore behind the vessel."

The team of Year 12 and Year 7 students from Narara Valley High School explored the waterfall and rocky end to this bay, finding an old inflatable vessel, and a perfect view from on top of the rocks.

"The beach and track on the left bank had a large mattress removed plus a bag of old bottles and cans from poor camping practices.

"The mangroves adjacent to the Spike Milligan Bridge within Woy Woy Bay had the usual residential and fisherman's litter.

"However, more concerning was the illegal dump site of carpet and underlay. This was loaded into the barge by the team."

Favourable tides allowed access to the mangroves in front of Woy Woy Station.

"Commuters applauded the students' efforts as 12 very full bags plus larger items were removed from 200 metres of mangroves.

"Laying in tall grass adjacent



to the rail bridge was coiled plastic pipe, two inches thick, possibly unused from a previous underground project.

"This was recoiled and carried onto the barge with a local landscaper contacted for recycling.

"Our last site was the northern tip of Pelican Island where oyster baskets and small litter was collected.

"It was a very full barge that returned to Gosford Sailing Club, the students again active on the offload into the Clean4shore car trailer.

"Pizza for lunch then off to Woy Woy Tip where 600 kilos was deposited at the landfill site."

SOURCE: Social media, 3 Dec 2021 Graham Johnston, Clean4Shore



Marine Rescue grant for remote-controlled lifebuoy

Marine Rescue Central Coast has been awarded \$14,300 to purchase a U-Safe remote-controlled lifebuoy.

Their grant application was successful in the 2021 Community Building Partnership program, said Member for Gosford Ms Liesl Tesch.

"Marine Rescue provides a critical and life-saving service to our communities," she said.

"The U-Safe, self-propelled, remote-controlled lifebuoy is cutting-edge Australian technology that will enhance the capability of Marine Rescue in hazardous conditions and assist in circumstances where lives are at risk.

"This funding will increase the capability of Marine Rescue on the Central Coast to respond to emergencies and improve outcomes for all of us."

Ms Tesch said the program required applicants to submit detailed information of their requests, followed by the Local Member's approval and assessment by an independent panel.

She said approving their application was a no-brainer.

Ms Tesch told the Marine

Rescue members that their service to the community did not go unrecognised.

"We are so appreciative of the work you do to ensure safety, provide guidance and expert advice on our waterways."

Regional operations manager Mr Steve Raymond said: "The lifebuoy is a great addition to our unit, and we are looking forward to further evaluating its effectiveness as a rescue tool in a range of sea conditions and rescue scenarios."

Members Mr Mal Ralston and Ms Megan Looney said the device would benefit rescue missions.

"This device will provide safety assurances to the local water users on the Central Coast," said Mr Ralston.

"It's a robotic life-buoy, which we can control from the shore or vessel, and has a range of about 400 metres from the point of control and can travel up to 15 kilometres an hour."

Ms Looney said: "This rescue device will ably serve the Marine Rescue Central Coast and volunteers for years to come.

"This is a great investment in emergency-response equipment."

SOURCE: Media release, 7 Dec 2021 Liesl Tesch, Member for Gosford

Great day at Christmas Fair

The NSW Umina Beach branch of the Country Women's Association has had a "great day" at its Christmas Fair on December 4.

"We had a great day - many visitors and lots of things sold," said branch president Ms Rikki McIntosh.

Branch members and their families contributed to and manned the various stalls.

"Everyone enjoyed the Devonshire tea and the sausages.

"We hope all our stall raffle winners enjoy their prizes."

SOURCE: Social media, 4 Dec 2021 Rikki McIntosh, CWA Umina Beach



The trusted name in PROPERTY MANAGEMENT for HOLIDAYS + SALES + RENTALS

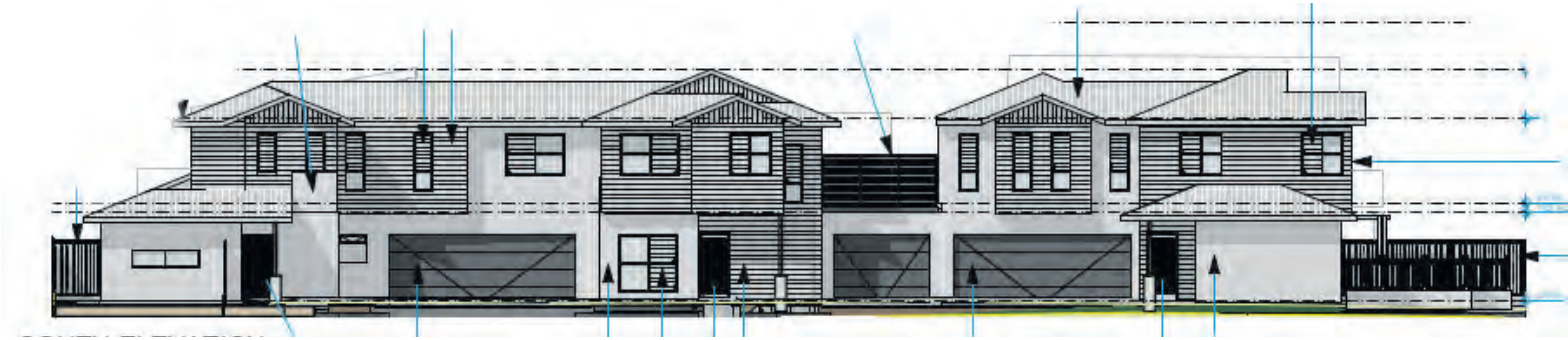


Ettalong office: 02 4344 6152 - www.ettalong.accomholidays.com

Kilcare, Daley's Pt, Ettalong, Umina and Pearl Beach, Patonga and Woy Woy



Planning



Webb Rd application quotes from Gallipoli Ave approval

The Central Coast Council has received a multi dwelling application for three townhouses at 66 Webb Road, Blackwall.

The application, written by Mr Ravi Sharma of Clark Dowdle and Associates, states: "The two-storey dwelling house would be founded on reinforced concrete slab, timber framing with a mixture of external cladding."

All setbacks apart from the front setbacks fall short of the minimum stipulated in the planning provisions.

Rear setback is as little as 1.1 metres where the requirement is six metres.

Side setbacks are as little as 0.9 metres where the requirement is 3.5 metres.

The proposal exceeds the maximum width and depth of a building of 25 metres, with an actual length of 38.45 metres.

Private open space is as little as 31 square metres, compared to a requirement 50 square metres.

The application seeks to justify setback non-compliances by quoting from an assessment report for 7 Gallipoli Ave (DA52934), which it attributes to Mr Scott Cox, who was department head at the time.

"The proposed development utilises all available area across the site and is contemporary in design.

"The character statement Blackwall No.5 suggests that all new development should be encouraged to reflect the features of traditional mid twentieth century bungalows within the Woy Woy Peninsula.

"That is one of small modest bungalows surrounded by generous setbacks, gardens and semi-mature and mature trees.

"Whilst this may be the

desired outcome of the character statement, the attainment of the above becomes quite the conundrum with contemporary unit development universally occupying all available space for the site.

"Encroachments into front rear and side setbacks are often requested and granted to applications, further undermining the intent of the desired character for specific precincts.

"The variations are supported, with consideration of increases in housing diversity and making greater more efficient use of infrastructure."

However, the application does not quote the full passage from the approval of the Gallipoli Ave development which goes on to say: "Although allowing for greater diversity in housing choice, medium density may in some instances present as one large solid mass,

with minimal separation and no visual articulation in built form.

"This is not the case in the proposed development as there are a number of attributes, which allow the proposed medium density development to maintain a sense of separation between dwellings and supports the retention of mature vegetation.

"For example, the frontage to Gallipoli Ave is approximately 56 metres in length, with nature strip of approximately 15 metres.

"The wide frontage to Gallipoli Ave provides opportunity for greater articulation in design creating a visual effect, of reduced bulk and heaviness which is present in other similar density developments.

"This is further enhanced by the generous nature strip which allows for the retention of mature shade trees, softening impact of the development when viewed from

the street.

"The proposed development is consistent with the desired character and is supported."

The Webb Rd application will be on public display and open for submissions until January 24.

The council's eplanning portal is currently "down for maintenance" and is not expected to be available until December 20.

SOURCE:
DA Tracker, 3 Dec 2021
DA63718, Central Coast Council

Local Planning Panel rejects Alfred St proposal

The Local Planning Panel has rejected an applicaion to erect of commercial premises with shop top housing in a T-shaped building of up to five storeys fronting West and Alfred Sts, Umina.

The council assessment recommend approval for the \$5.2 million development.

The Panel rejected the application, citing its non-compliance with planning provisions including exceeding four storeys, building height, side setbacks and communal open space.

"The proposed non-compliance ... would constitute an undesirable precedent for future development and threaten the future achievement of the strategic planning objectives for the desired future character of the area," the Panel stated.

The proposal had a commercial floor area of 891 square metres, including 321 square metres of an existing chemist shop.

It had 14 residential units, comprising two one-bedroom, four two-bedroom and eight three-bedroom units, varying in size from 57 square metres to 159 square metres.

The application proposed 41 Basement car parking spaces, two motorcycle spaces and four bicycle spaces.

Car parking would consist of parking stackers as well as some

tandem parking, according to the council report.

Two commercial tenancies were proposed on the ground floor with the residential units on four floors above this.

The application was referred to the Panel as the application because it was subject to State Environmental Planning Policy No 65 - Design Quality of Residential Flat Buildings.

The applicant submitted a design verification statement from a registered architect.

Council's architect reviewed the application for the council assessment, stating: "This is a further amendment to and application for the construction of a five-storey mixed use development."

The architect concluded: "The amendments have addressed the significant non-compliances with the previous proposal and though not fully complying with the design guidelines have generally achieved the objectives of the guidelines and the nine design principles of SEPP 65."

Two public submissions, including a petition, were received.

They raised issues of height and overshadowing, variations being sought to make a proposal viable, the extent of blank walls, its unsuitability for high density residential living, the isolation of the corner block, overlooking the neighbourhood with reduction in privacy, amenity and property

values, additional traffic and loss of tourism.

Nevertheless, council planners stated the approval of the application was considered to be in the public interest.

"The proposal will generate social and economic benefits for the community by providing additional commercial and residential accommodation near public transport and services.

"The proposal is consistent with the relevant objectives of the applicable environmental planning framework.

"The proposal does not result in any unreasonable environmental impacts and will not unreasonably impact the amenity of neighbouring properties," the council planning assessment stated.

SOURCE:
DA/61540/2021, Local Planning
Panel agenda 3.1, 9 Dec 2021



Forum

'Shop top' – all top and no shop

Why do we use the term "shop top" to describe developments that are all "top" and no "shop"?

It's a term that town planners, developers and council staff use to confuse the public into thinking that a proposed development is not 95 per cent residential with a paltry five per cent or so at the

bottom cynically designated as "commercial".

The term gives a false impression that these developments actually belong in a town centre.

After all we don't call horses "hoof extensions" nor do we call cars "grille embellishments."

Why don't we simply call them what they are?

As currently being implemented

"shop tops" are crushing retail and commercial activity and creating dead zones in retail areas.

If you don't believe this just take a stroll around Umina Beach or Ettalong sometime.

They are not "shop tops" they are "splat flats".

SOURCE:
Email, 15 Dec 2021
Frank Wiffen, Woy Woy

Panel approves modified plans for Pearl Beach house

A development application for a new dwelling house at 26 Coral Cr, Pearl Beach, has been approved by the Local Planning Panel subject to conditions recommended by Central Coast Council.

The decision was 3-1 in support of the application.

The council planning assessment stated: "The proposal was modified during the assessment of the subject application as result of the objections by immediate neighbours to address encroachment on the beachside which in turn raised further privacy and amenity concerns."

"The amendments were not formally notified to all objectors."

"The amended architectural plans demonstrate that the proposals building footprint has been reduced to be now located behind the Coastal Building Line and no closer to the beach than the adjoining dwelling at 34 Coral Crescent."

The primary reason given by the Panel for approval was that "the proposal as amended through the assessment process together with the draft conditions of consent addressed the concerns raised by the objectors."

This may explain the absence of any speakers, for or against, at the Panel hearing, despite 46



submissions having been received for the original development application.

While the Panel approved the application, panel member Ms Kara Krason had a dissenting view.

The minutes recorded that "Ms Krason acknowledged the improvements made to the proposal since it was submitted but was unable to support the proposal in its current form."

"Key reasons include inconsistency with various objectives and provisions of Gosford Development Control

Plan 2013 including but not limited to the desired future character for the Pearl Beach: Beachfront, coastal building line and setbacks."

The council planning assessment report stated: "The ground floor (beach facade) building line is now approximately 1300mm behind the first floor of 34 Coral Crescent and the first-floor building line (beach facade excluding balconies) is now 90mm to 850mm behind the first floor of 34 Coral Crescent. It is noted that the reduction of both the ground and first floor footprints are

now located behind the existing dwellings building line, equating to an extended rear foreshore setback of 20m as opposed to the required 10.00m DCP 2013 development control.

"Furthermore, the existing foreshore lawn and vegetation respectively are to remain untouched."

"The amended plans were not notified given the changes to the architectural plans reduced the impacts, were minor in nature and, overall, the development variations of the proposal remained substantially the same development."

The assessment report addressed objections that the dwelling would be a "de facto" dual occupancy: "The development application has been lodged as a single dwelling house."

"It is noted that dual occupancy development is not a permitted use in the R2 zone under GLEP 2014."

"Under the draft consolidated Central Coast Local Environmental Plan, dual occupancy development will be permitted in the R2 zone however, subject to lodgement and merit assessment."

The report recommended conditions that would prevent the house being let, adapted or used "for separate occupation in two or more parts".

Cooking facilities would not be permitted on the first-floor upper level of the dwelling house."

In relation to objections to the triple garage, the report stated: "The amended architectural plans now demonstrate that only one single driveway on the road reserve with one double car garage has been incorporated to the dwellings floor plan and final architectural drawing set."

The panel was told the local bus stop, currently located in front of one of the proposed garages could be relocated.

"It is noted that the bus stop is on a local road and constitutes a bus sign attached to electricity pole,

"There is no formal shelter. It is a Busways Woy Woy to Pearl Beach No 54 (Loop) Service."

"Bus stop relocation is possible and can be moved within the general immediate vicinity."

The assessment report said that the bulk and scale were "consistent with the objectives of the R2 zone and desired character of the area".

The Conditions of Consent include clauses requiring a street tree be planted with a minimum pot size of 25 litres and to take special care not to damage the roots of neighbours' trees.

SOURCE:

Minutes, 25 Nov 2021

DA60416, Local Planning Panel



Liesl Tesch MP
Member for Gosford

How can I help?

Schools and education

Community Recognition Awards

Anniversary & birthday messages

Fair Trading

Hospitals and health

Main roads

Police and Emergency Services

Public housing

Trains and public transport



20 Blackwall Road, Woy Woy NSW 2256



Gosford@parliament.nsw.gov.au



(02) 4342 4122

Forum

Exclusion is still commonplace for people with disability

This year's theme of International Day of Persons with Disabilities is "Leadership and participation of persons with disabilities towards an inclusive, accessible and sustained post-Covid-19 world".

The dire need for inclusion for people with disabilities has been in the headlines for years with media stories of discrimination and bullying peppering our newspapers and social feeds.

As a person with a disability, exclusion for us is still very commonplace, especially in the workplace.

The barriers, both physically and socially, placed in front of people with disabilities are in reality a barrier to Australia's potential. It's time Australia had an examination of our relationship with people with disabilities.

The Royal Commission into Violence, Abuse, Neglect and Exploitation of People with Disability has been running since 2019 and has offered people with disability a real moment to express the sheer extent of discrimination we encounter every day.

Recently the Commission heard about the barriers faced by people with disabilities when they seek the right to work.

As a Labor Member, I believe work is so important to our identity. Being employed not only says to someone that their time is worth something – it says their contributions are valued by society.

As a person with a disability work provides a symbol of inclusion in a world determined to sideline you.

Recently, Olivia Sidhu a 22-year-old Sydney woman with Down Syndrome shared her story about getting a job. She describes receiving a proper wage is her "greatest achievement".

This is the power of employment for people with disabilities.

Disappointingly, Government's across Australia fail to recognise and address disability employment gaps, with their own ambitious targets announced with fanfare often falling down the priority list.

For example, prior to the 2019 NSW election, then-Premier Gladys Berejiklian outlined a

Ms Liesl Tesch AM MP is an incomplete paraplegic who lives in Woy Woy, and for the last 20 years has taught students at local public schools including Brisbane Water Secondary College until she was elected to the Parliament of New South Wales as the Member for Gosford in April 2017.

Ms Tesch has represented Australia proudly

at seven Paralympic Games, bringing home two gold medals in sailing.

Between teaching and the Paralympics, Ms Tesch established the not-for-profit Sport Matters to bring targeted development assistance to people with disability in Australia, the Pacific, Asia and Africa.



Low rate of disability employment, Tesch tells unions

Member for Gosford Ms Liesl Tesch joined Unions NSW's "Intersectionality Panel" last week to talk about the challenges faced by women with disabilities.

"Australia has one of the lowest rates of disability employment in the 38 member countries of the Organisation for Economic Co-operation and

Development," she said.

"People with disability want to work and the barriers of discrimination still prevent all Australians from getting a fair go."

SOURCE:
Social media, 7 Dec 2021
Liesl Tesch, Member for Gosford

number of Premier's Priorities which included the target of 5.6% of people to be employed by the NSW Public Service by 2025.

One year later, the State of the Public Sector 2020 report recorded a decrease in the percentage of people with disabilities and admitted they were likely to fall short of their goal. It is blatantly obvious one year on the "Premier's

Priority" has been abandoned.

The report instead pointed to their employees as the real source of the decrease, claiming that when people were given the opportunity to state their disability status anonymously the sector showed a higher rate of disability employment.

This is plainly a cop out.

The former Disability Discrimination Commissioner, Dr Graeme Innes argued powerfully to the Disabilities Royal Commission that the onus isn't on people with disabilities to identify themselves to their employers; the onus should be on employers to create an inclusive environment which encourages people who have a disability to identify without fear or bullying from their workplace.

Because as Dr Innes pointed out "...employers need to show us that that situation is changing, and that we will be welcomed in the workplace, not discriminated against."

The same NSW Public Sector report also found that those who do work for the NSW Public Service have reported high levels

of bullying, with 24.2% of people living with a disability reporting they had been bullied at work within the 12 month period. That's almost double the rate of the bullying that was experienced by public sector employees overall in NSW.

With regional areas experiencing an even higher rate of bullying for people with disability in the public sector, jumping to 28% this only adds to the real concern of discrimination in the workplace, which is only pushing people with disability further out of the workforce.

When Premier Berejiklian made the target to employ more people with disabilities she proudly stated that as the biggest employer in the southern hemisphere, the NSW Government was uniquely placed to make a lasting difference if they could put people at "the heart of everything we do".

I hope we are put at the heart of everything because that's what we want - inclusion. Ms Berejiklian's successor needs to take this "Priority" more seriously.

One priority the Government could not deny was the Australian

Paralympian athletes success at the Tokyo 2020 Paralympics held this year, where they brought home a total of 80 medals, with 21 gold, 29 silver and 30 bronze.

In 2021 this incredible result and media outcry led to the recognition and equal pay for Olympians and Paralympians alike.

As a former Paralympian, I know the powerful message this sends to those who have competed past, present and into the future. We are valued as highly as our Olympian brothers and sisters.

Discrimination in our workplaces is still a constant. Even as a Parliamentarian the barriers remain.

In 2017 I was elected as the Member for Gosford. As I was forced to take the back entrance on my first day of work the silent discrimination was louder than ever before.

When I first arrived I was reminded regularly that "this is the oldest Parliament in Australia" as though this is a license to discriminate against people with disabilities. The inaccessibility of Parliament was obvious and there were parts of my workplace I couldn't dream of getting to.

After four years of meetings and letter-writing, this year ramps were finally built in the Speaker's Garden and the north side of the building.

I was wheeled out for the opening of one of these ramps but the emotions I felt were very mixed; on the one hand I was very happy that people with various physical disabilities can now access that beautiful garden and one side of the building - but I was bitterly disappointed, and I still am, that this kind of infrastructure has taken four years to install and there are still many areas within the building which are still so hard for people like me to reach.

Since I arrived in Macquarie Street, the ongoing conversations with both the Parliament and the Government about the accessibility to our workplace have been tiresome.

Every year I make submissions to Parliament's Disability Inclusion Plan. This year I was asked for my input but I found myself writing the same suggestions that I have been making for four years- with little confidence that the fundamental changes we desperately need will be taken seriously and acted upon.

I hope all Parliamentarians believe the NSW Parliament should be the "People's Parliament" however without a serious determination to fix these issues, this sentiment is only lip service.

It is hard to feel included when parts of your own workspace are inaccessible. This is the same battle being fought by people with disabilities in workplaces across our community.

How can people who are disabled feel included when there are so many barriers?

SOURCE:
Media release, 3 Dec 2021
Liesl Tesch, Member for Gosford

Public Notices

Woy Woy Peninsula Lions Club

Car Boot Sale
and BBQ events

CANCELLED
until Sunday

30th January 2022

due to Covid restrictions and
loss of car park spaces

Enquiries: 0478 959 895

Peninsula News
Community Access

offers

Classified
advertising
at affordable
rates

Contact us for details:
4243 5333
advertising@peninsula.news.

More effort needed on Rawson Rd intersection

The redesign of the Rawson Rd roundabout is about as minimal an effort as one could hope for ("Council to buy paint shop for intersection upgrade", PN 533).

If, as Council says, "the intersection is the main entrance to the Peninsula for commuters", why is there only one lane of traffic towards the M1 from the intersection?

If this flow is so important, it would seem to warrant more consideration.

In fact, it would seem obvious, from the diagram, that the main traffic movements provided for are straight-through traffic on Ocean Beach Road and right-hand turns from Rawson Rd into Ocean Beach Rd.

If the flows into Rawson Rd are of any consequence, there should

be provision for a left-hand turn at the intersection, but no allowance has been made for it in the design.

Of course, it is typical of Council that the property on the south-western corner has just been completely redeveloped, without the slightest effort to integrate this work with the design of the intersection.

As a result, although it is craftily not shown on the diagram, the operation of the intersection will still be impaired by the movement of vehicles into and out of the service station.

Furthermore, it will be necessary to make extensive alterations to the service station on the south-eastern corner, whereas the road widening could have been carried out, at little or no cost, on the western side, as part of the rebuilding just completed.

It is also worth noting that, in distant 2026, when the project will supposedly be completed, there will be a very large redevelopment site on the north-eastern corner.

It would be interesting to know whether any thought has been given to the use of this site which will be a prominent one at the entrance to the Peninsula.

Incidentally, the little consideration that has been given to the traffic flows on Rawson Rd emphasizes the point that the railway level crossing will not be carrying any heavy load of vehicles in the future, suggesting that the somewhat hysterical calls for its replacement don't have much justification.

What does need to be done at the level crossing is to improve the intersection of Rawson Rd and Railway St which, at present, is quite hazardous.

Is it too late to incorporate some needed work there as part of the current exercise?

SOURCE:
Email, 14 Dec 2021
Bruce Hyland, WoyWoy

Why does this sort of thing happen?

Transport for NSW promised an online information session in "late November" where the community would have the opportunity to discuss any questions or concerns about their Blackwall Rd intersection plans.

"The community will be informed of the date and time via the project webpage and social media."

This did not happen in November.

Then on December 8, with just one day's notice, the Department has advertised as NSW Roads on Facebook that a Microsoft Teams

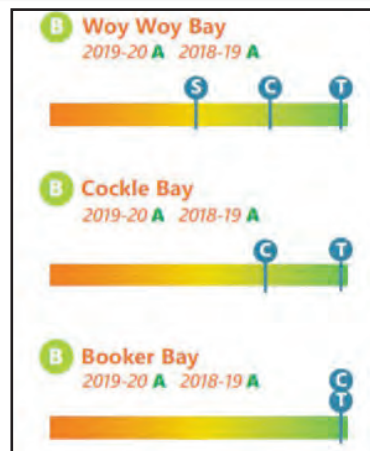
meeting would be held at 9:30am the following day.

There was no post on the NSW Roads Facebook page.

Why does this sort of thing happen?

SOURCE:
Email, 14 Dec 2021
Sally Jope, Umina Beach

News



Water quality declines, says 'report card'

The water quality and ecological health at two sampling points around the Peninsula have declined over the past year.

The council's Central Coast Waterways Report Card has downgraded both Woy Woy Bay and Booker Bay from "excellent" to "good".

The report attributed this to

heavy rainfall in March which "resulted in one significant chlorophyll-a trigger value exceedance in April".

Water quality throughout Brisbane Water was graded good (B) with the exception of Kincumber Broadwater which received a fair grade (C)

The water quality at Patonga Creek was rated as "excellent".

The sites were monitored for chlorophyll-a, turbidity and Seagrass depth range.

The report said the ratings were used to track change, guide management decisions and identify the need for detailed audits.

SOURCE:
Website, 29 Nov 2021
Waterways Report Card,
Central Coast Council

Competition raises \$2000 for hall upgrade

The Pearl Beach Progress Association has raised \$2000 for its memorial hall improvements through its latest competition.

The aim was to guess the value of a prize pool which included chocolates, alcohol, art and craft works, perfume and skin care products.

And the price is \$2577.28.

The winner was Pearl Beach resident Ms Bev Lapacek, whose guess of \$2577.19 was closest to the actual value of \$2577.28.

The competition that was held through November was an online initiative that could run during lockdown, when other fund-raising efforts could not.

Proceeds will go to finishing the hall upgrades, which have been



affected by increased costs of building materials and delays due to the pandemic.

SOURCE:
Website, 8 Dec 2021
Pearl Beach Progress Association

Former Army chaplain leads Remembrance Day service



Peninsula Villages resident Mr Peter Swain led and organised last month's Remembrance Day service in Pam Palmer House.

Mr Swain was a part-time chaplain in the Australian Army Reserve for 20 years, achieving the rank of Lieutenant Colonel and being awarded a Reserve Force Decoration (Australian Honour).

"This is one of many achievements for Peter who, in his 90 years, has earned the official title of the Reverend Chaplain Dr Peter Swain OAM, RFD, BA, B.Ed, BD, MA, Grad.Dip.Ed," said Peninsula Villages chief executive Mr Fred Van Steel.

SOURCE:
Social media, 30 Nov 2021
Fred Van Steel, Peninsula Villages

Experienced lawyers.
Personal service.
Trusted advice.

TPP Tonkin Drysdale Partners

Backed by over 60 years' experience and industry accreditations, Tonkin Drysdale Partners is one of the largest, most experienced law firms on the Central Coast.

When only the best will do:
P (02) 4341 2355
tdplegal.com.au

Accredited Specialist in Family Law
Accredited Family Dispute Resolution Practitioner
Nationally Accredited Mediator

Education

Reading in Challenge for four years



Five students from Woy Woy South Public School have been recognised for participating the Premier's Reading Challenge for four years.

They were presented with "gold certificates" to mark their achievement.

School principal Mr Matt Barr said 314 students from the school had completed the 2021 Challenge in the past year.

He said students could start writing down the books they read now, to get ready for the 2022 Challenge.

SOURCE:
Social Media, 7 Dec 2021
Matt Barr, WWSPS



Staff win annual sports competition with students

Umina campus teachers at Brisbane Water Secondary College were denied a clean sweep in the annual staff versus students sports competition last week, but came away unbeaten.

Year 9 students competed over

three days in netball, ultimate Frisbee, touch and volleyball.

Staff started with wins in ultimate Frisbee and netball, but were held to a draw in touch, before defeating the students in volleyball.

SOURCE:
Social media, 10 Dec 2021
Kerry O'Heir, BWSC Umina

Last session for next year's kindergarten

The last Ready for School session was held last week at Woy Woy South Public School for next year's kindergarten students.

"The children learned all about our school uniform," said principal Mr Matt Barr.

"We look forward to seeing you all at Big School in 2022."

Mr Barr said parents would receive a letter in the mail with all the information for the start of school next year including class teacher and scheduled interview times.

SOURCE:
Social media, 8 Dec 2021
Matt Barr, Woy Woy South Public School



Photos taken at presentation days

Ettalong Public School held its Presentation Days last week.

With parents not allowed to attend, the school took photographs of award winners.

"Parents of award winners will

receive a photograph of their child with their award in the coming days," said relieving principal Ms Jodie Campbell.

SOURCE:
Social media, 10 Dec 2021
Jodie Campbell, Ettalong Public School



Sport



Bunnies presentation day

Umina Bunnies Junior Rugby League Football Club held its presentation day on Saturday, December 5.

The presentation day was held

in wet and cold weather, resulting in a lower attendance than in other years.

SOURCE:
Social media, 5 Dec 2021
Umina Bunnies JRLFC



Nippers start fifth season

Ocean Beach Surf Life Saving Club's Seagull Nippers will start their fifth season on Sunday, January 16.

Seagull Nippers are held on Sundays from 11am and run between an hour and an hour and a half.

"Seagull Nippers provides a supportive environment to enable participation and inclusion for individuals with additional needs into surf lifesaving," said

coordinator Ms Simone Rider.

"Each session aims to involve safety education, surf lifesaving skills, beach and water familiarisation, physical activities, sensory activities, interactions with other nippers and lifesavers."

For further information, email juniors@oceanbeachslsc.com or phone 0422 669 334.

SOURCE:
Social media, 5 Dec 2021
Seagull Nippers, Ocean Beach SLSC



Peninsula Ducks softball results

Peninsula Ducks Softball Club results for games played on December 4 were: Teeball 10-all draw against Wingers/Decoys, Modball 8-6 loss to Mingara Blue, Junior Softball 5-4 loss to Mingara, Div 4: 9-5 loss to Decoys, Div 3 won, Div 2: 15-7 loss to Rusty Bears, Men 18-3 loss to Blue Thunder.

The club is seeking volunteers to cover ground duties, such as the barbecue and the QR Code check-in, and has reminded parents: "we must cover our duties".

"The club will only succeed if parents can volunteer some time to assist with these duties," said secretary Ms Gaye Whelan.

SOURCE:
Social media, 7 Dec 2021
Di Barrymore, Peninsula Ducks Softball

Simo returns

Glen (Simo) Simington has "come back home" to Umina Beach Bowling Club, according to club secretary Mr Peter Springett.

He returns after playing a successful year at Ettalong Bowling Club.

"We welcome back Simo," said Mr Springett.

SOURCE:
Social media, 3 Dec 2021
Peter Springett, UBMBC