

Covid numbers skyrocket as dose rate stays low

Coronavirus restrictions are relaxed from today as the State's fully-vaccinated rate exceeds 72.8 per cent.

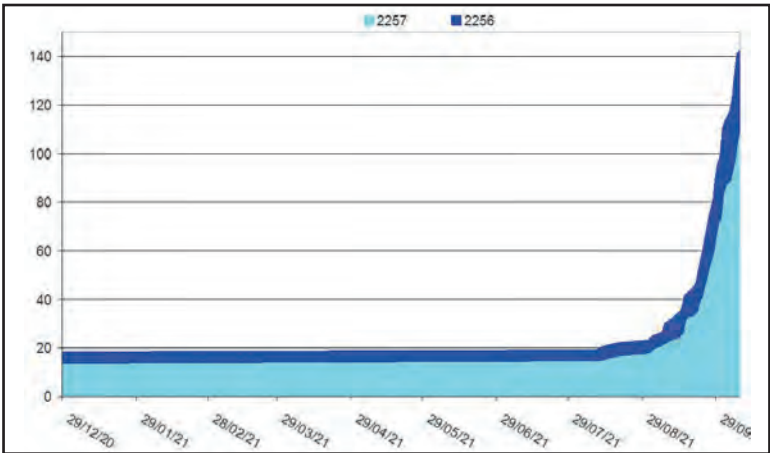
However, vaccination rates on the Peninsula sit at about 60 per cent, with weekly injection numbers dropping and case numbers skyrocketing, according to figures from the NSW Government Covid data and statistics website.

Total case numbers have gone from 19 in mid-August to 142 last Saturday, October 9.

One fifth of all Central Coast cases last week were in the Peninsula postcodes of 2256 and 2257.

In the three weeks since September 20, the Peninsula has recorded 87 cases, with 62 "active" on October 7.

Woolworths Umina was listed as an exposure site last week for a total of 24 hours over three days, September 30 to October 2.



NSW Health last week revised downward the vaccination rates on the Peninsula.

Analysis of the new figures gives a single dose rate of 85 per cent in 2256 and 90 per cent in 2257, with a full-dose rate of 60 per cent in both postcodes.

The full-dose rate for over-50s is around 70 per cent in both

postcodes.

For under-50s, the full dose rate in 2257 is 58 per cent, but only 48 per cent in 2256.

The figures also show the numbers of injections across the Peninsula has dropped from around 4250 a week over the last two months to zero for several days last week.

The figures do not provide any room for any other interpretation – calling into question the accuracy of the Government website data.

A first dose rate of 99 per cent for over-50s in the 2256 postcode area also seems unlikely.

The Government website gives no explanation of how vaccination rates can be revised downwards when the "eligible population" numbers remain the same.

Nor does it explain why no vaccinations were recorded for several days last week.

However, the website does state: "Percentage of the population vaccinated by residential address by postcode is sourced from the NSW Ministry of Health."

"Vaccine data is sourced from the Australian Immunisation Register – Services Australia."

SOURCE:
Website, 9 Oct 2021
Covid Data and Statistics,
NSW Government

Population	2256	2257
Eligible	13766	25357
> 50 years	7700	15000
< 50 years	6000	10300
Injections		
Total	20000	38000
> 50 years	13000	24000
< 50 years	7000	14000
Doses/person		
> 50 years	1.69	1.60
< 50 years	1.17	1.36
Percentages		
> 50 years		
One dose	99	92
Two doses	70	68
< 50 years		
One dose	68	78
Two doses	48	58
All ages		
One dose	85	90
Two doses	60	60



Wharf use delayed for photo opportunity, says Tesch

Woy Woy wharf has been completed for two months, but the community has been denied its use in favour of a ribbon-cutting photo opportunity for Liberal politicians, according to Labor Member for Gosford Ms Liesl Tesch.

"The Woy Woy Wharf upgrade is yet to open to the public because members of the Liberal Government are unable to cut their ribbon under the current restrictions.

"As far as I am concerned, this wharf was an upgrade for the community not an upgrade for a 'success' photo," she said.

"While we are all in lockdown, families here on the Peninsula are enjoying our incredible waterfront

and everything it has to offer going on walks and exploring new places in their own backyard for their mental and physical wellbeing."

"I know for locals a new wharf is exactly the kind of excitement they need and something our community wants to celebrate and enjoy."

The \$5.6 million investment into the redevelopment of the iconic Woy Woy Wharf features a floating pontoon with wheelchair access, lighting, benches with shelter and a fishing area.

Ms Tesch says people are allowed to picnic and fish and, now that it has officially been completed for over two months, want to experience all that the wharf has to offer.

"Before the hustle and bustle

of normal life and ferry services return, it would be a nice reward and silver lining for locals to enjoy a picnic on the wharf and be able to fish.

"We have waited years for a wharf upgrade and months for the official upgrade to be complete."

"It is a real shame and embarrassment for the Woy Woy Wharf to not be open simply because an archaic and bureaucratic process, which quite frankly no one cares about." "I think I speak for all of the community when I say we would much rather be able to enjoy our wharf now then wait for the Facebook post and announcement."

SOURCE:
Media release, 8 Oct 2021
Liesl Tesch, Member for Gosford

Supporting the Peninsula community
Only Peninsula advertising
Only Peninsula news

The next issue is out next week

This issue of Peninsula News is one week later than usual.

That is because editor Mr Mark Snell took some time off to recover from a hospital procedure, publishing this issue three weeks after the previous issue on September 20..

The next issue, number 530, will be published as scheduled next Monday, October 18, and publication will resume fortnightly after that.

Peninsula News is owned and operated by a voluntary non-profit association, The Peninsula's Own News Service Inc.

He said help to produce that edition of the newspaper would be appreciated.

Volunteer help and support are always needed and welcomed.

SOURCE:
Mark Snell, 10 Oct 2021

Nothing extra

With the lockdown, there has been less activity for Peninsula News to report.

As a result, we will not publish Peninsula News EXTRA, our electronic supplement, until after the lockdown is lifted.

In the meantime, feel free to scan the code to add your name to the list to be informed when it is next published.

Peninsula News **EXTRA**
Be notified. SCAN here.



Next issue: Monday, October 18

Email: contributions@peninsula.news

Peninsula News

Community Access

Peninsula News is a fortnightly community newspaper for the Woy Woy Peninsula, owned by The Peninsula's Own News Service Inc, a local non-profit incorporated association. Its aims include providing a viable, non-partisan news medium and forum exclusively for the Peninsula and developing a strong sense of community on the Peninsula.

Editor: Mark Snell

editor@peninsula.news

Advertising: Frank Wiffen

advertising@peninsula.news

NEXT EDITION: Peninsula News 530

Deadline: Thursday, October 14

Publication date: Monday, October 18

CONTACT DETAILS

NEWS: contributions@peninsula.news

ADVERTISING: advertising@peninsula.news

PHONE: 4342 5333 - Please leave a message

POSTAL ADDRESS: PO Box 585, Woy Woy NSW 2256

Please note: Peninsula News currently has no paid employees, and it may take a little time for us to get back to you. Our volunteers usually have other jobs and commitments, which compete for their time.

EMAIL ISSUES?

When emailing us, you will note that the domain name is PENINSULA.NEWS only. There is no .com or .com.au. If your email bounces or does not appear to have reached us, please check the address and try again. If this still does not work, try our old fallback address or call us by phone and leave a message.

Fallback email address: editor@peninsulanews.asn.au

Editorial policy and guidelines

At its heart, Peninsula News is a community effort.

It welcomes and relies on the contributions provided voluntarily and at no cost by local organisations, groups and residents.

The newspaper aims to be accessible to the community - both through making its columns accessible to community groups and by having copies available in accessible locations, including through its website.

The following policies and guidelines are designed to support the aims and standards of the newspaper.

Locality

The newspaper's editorial policy reflects a desire to reinforce the Peninsula's sense of community.

To qualify for publication, articles must have specific relevance to the Peninsula. For example, they must be about activities or events happening on the Peninsula or be organised by or involving Peninsula people.

The newspaper is not regional or national in nature, so regional or national issues will not be canvassed except as they affect the Peninsula.

Regional sports will only be covered from the perspective of Peninsula clubs. Regional plans will only be aired in the context of their ramifications for the Peninsula.

Peninsula News aims to be inclusive of as much of the Peninsula community as possible.

Readability

To ensure that the newspaper serves its purpose, it must be readable and represent the interests and activities of the community in its content.

Contributions to the paper are edited to consistent standards of readability. Guidelines are available for intending contributors.

All items will be dated. They must contain the name of the author to whom the contribution may be attributed, with their first name spelt out, along with their suburb or organisation. Anonymous contributions will not be accepted.

Forum letters

The Forum section provides the opportunity for readers to express their views on any aspect of Peninsula community life, with the aim of reflecting the community's diversity of opinion.

Nevertheless, letters may be edited for readability, including for length, spelling and grammar, and to avoid legal liability on the part of the newspaper, or they may be declined altogether.

Contributors are asked to keep their

contributions to the matter at hand, and to focus on the issues and not abuse or insult others.

Other than in the case of holding public figures to account, criticism of others (as opposed to criticism of particular opinions) is unlikely to be published in the interests of facilitating the expression of a diversity of views.

All letter writers need to supply name, address and contact details. Only name and suburb will be published.

Contributors who do not wish the wording of their letter to be changed at all should make a note to this effect when submitting their letter. In some cases, this may result in the letter not being published.

Corrections

We try to be as accurate as possible. However, mistakes can still slip through.

If you believe we have got something wrong, whether an error of fact or interpretation, we ask that you write to us by email with details for publication. These corrections may appear as Forum letters or as news items and should conform to our requirements for news and Forum contributions.

Source lines

Peninsula News includes "source lines" at the end of each article which aim to provide readers with information about where and how we came across the information, so that they might judge for themselves the veracity of what they are reading.

It should not be assumed that the article is a verbatim reproduction of the source. Similarly, it should not be assumed that any reporter listed is necessarily responsible for writing the whole news item. Source lines are not by-lines.

Often articles come from a number of sources. They are edited for readability and reader interest and given different headings, and consequently can be expressed quite differently from the source material.

Peninsula News usually receives its information in three ways: It is sent to us by someone wanting to promote their activities; it is sent to us in response to our inquiries; or it comes from a newsletter or other document to which we have access.

Sometimes we may interview a person or report what they said at a meeting.

The following descriptions are used:

Media Release - unsolicited contributions.

Media Statement - sent in response to our questions.

Website or Social Media - information published online.

Newsletter or Report - published in print or online.

Interview or Meeting - statements recorded by a reporter.

Forum contributions may be: **Email** if sent electronically and **Letter** if written on paper.



Seed library starts at community garden

A seed library has been started at Woy Woy Peninsula Community Garden so seeds can be shared among garden users.

"A seed library is a collection of seeds that you can borrow to plant and grow your own food, herbs and flowers at home," according to co-ordinator Ms Tania Haydn.

"After your plants mature and go to seed, you save the seeds and return them to the library so

they can be shared with others.

"We do not have access to the Woy Woy Seed Library while in lockdown so we will start one at the garden."

A donated letterbox has been mounted in the garden for the purpose.

A little book library is also being built to donate and borrow books.

SOURCE:

Social media, 23 Sep 2021
Woy Woy Peninsula Community Garden

PCYC holds school holiday program live online

PCYC Umina Beach ran online programs during the school holidays due to the lockdown, replacing the normal school holiday programs held at the centre.

The 40-minute sessions offered a variety of activities with no equipment needed, "just some clear space to move around".

Activities included gymnastics, ballet, cheerleading, contemporary dance, jazz, handstand drills, ab

workouts, and martial arts.

Each class was designed to be suitable for active club members of all ages and abilities.

SOURCE:

Social media, 25 Sep 2021
PCYC Umina Beach

Markets to return

Umina Beach Markets and Woy Woy Waterfront Markets will be returning in December, organisers have announced.

"Umbala Events has decided to wait until December so that everyone can enjoy the markets."

"It's been a while and we all want to get back to supporting our small local businesses."

"We will be back just in time for Christmas shopping and there's no better place than being outside while in fresh air."

Woy Woy Markets will return on December 12.

Umina Markets will return on December 19.

SOURCE:

Social media, 4 Oct 2021
Umbala Events

Kindergarten enrolments

Woy Woy South Public School is taking enrolments for students starting kindergarten next year.

"If you haven't enrolled already you can use the link to enrol online at edu.nsw.link/WWSEnrol," said principal Mr Matt Barr.

"We can't wait to meet our new kindergarten 2022 students and welcome you all to our school."

SOURCE:

Social media, 7 Oct 2021
Matt Barr, Woy Woy South Public School

Vacancies at bee hotel

The Pearl Beach Arboretum committee has installed a "bee hotel", providing nests for solitary native bees.

"Here's hoping our first residents arrive soon," said vice-president Ms Ann Parsons.

SOURCE:

Social media, 23 Sep 2021
Ann Parsons, Crommelin Native Arboretum

Month's rainfall total down by a quarter

The Peninsula has recorded a rainfall total of 50.2mm for September, about one quarter less than the monthly average of 66mm.

Only 18mm was recorded in the last 10 days of the month.

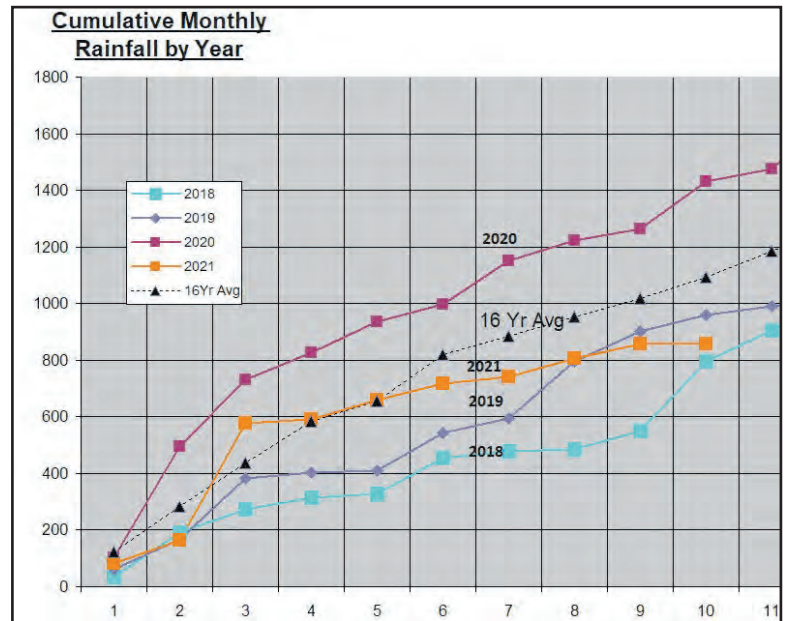
Total rainfall for the year to the end of September was 856mm, 15.9 per cent less than the September cumulative average of 1018mm, according to figures supplied by Mr Jim Morrison of Umina.

Only 0.7mm rainfall was recorded in the first week of October.

The October rainfall average is 75mm.

SOURCE:

Spreadsheet, 8 Oct 2021
Jim Morrison, Umina



Residents' association is incorporated

A residents' association has been formed to represent the interests of the Peninsula community.

The association has been incorporated as the Woy Woy Peninsula Residents' Association Inc and is now seeking members, said secretary Mr Julian Bowker.

Mr Bowker said: "The Peninsula Residents Association aims to serve as a non-partisan forum and give the Woy Woy Peninsula community a collective voice on matters affecting its quality of life.

"It is committed to protecting and improving the Peninsula's liveability and sustainability including social and environmental aspects."

Annual membership would cost \$20.

Mr Bowker said: "Its objectives are to openly disseminate information, discuss and identify the concerns and needs of the Peninsula residents, and to represent and advance the interests of residents at local community level, and with Local Government, and State and Federal Government bodies."

The association would "seek to improve the infrastructure, amenities and services available to residents and the Peninsula community, and to advocate responsible planning and development of the Peninsula, its neighbourhoods and adjacent areas, with Council, other government agencies, community

and business groups".

It would "encourage strong community engagement and participation in the decision making of Council and other bodies, and collaborate with other groups on matters of mutual interest".

The association would undertake and help coordinate other activities which benefit and improve the liveability of residents and the Peninsula community, Mr Bowker said.

He said the association defined the Peninsula as the residential area contained by the Rip Bridge on Maitland Bay Dr, Staples Look-out on Woy Woy Rd and the Spike Milligan bridge on Brisbane Water Dr.

As well as suburbs such as Ettalong, Umina and Woy Woy, the area also covered The Bays, Pearl Beach and Patonga.

The boundary coincided with the Australian Bureau of Statistics SA2 statistical areas of Woy Woy-Blackwall; and Umina - Booker Bay Patonga.

Those wishing to join the association may download an application form from the association's website at <https://sites.google.com/view/thepra>.

For further information, email the association at thepeninsularesidents@gmail.com.

SOURCE:
Media release, 9 Oct 2021
Julian Bowker, Peninsula Residents Association

Asset zone mapped

Residents of Pearl Beach please be aware, over the next week

NSW Rural Fire Service state mitigation crews have spent the last week mapping the asset protection zone around Pearl Beach.

The Pearl Beach brigade advised residents that crews

would be easily identifiable in RFS uniform.

"Please do not be alarmed.

"If you see them and please, for everyone's safety, maintain your 1.5 meters social distancing from them.

SOURCE:
Social media, 5 Oct 2021
Pearl Beach brigade, NSW RFS



Xenos, the 'ignitable liquid detection canine', helps out

Fire and Rescue NSW has used a specially-trained dog to help investigate the cause of a fire in a granny flat in Neptune St, Umina, on September 28.

On arrival, fire crews found a granny flat fully alight with reports of trapped people inside.

Firefighters performed a search of the building and fortunately, no one was inside.

Fire investigators used Xenos, an "ignitable liquid detection canine", in working with NSW Police to ascertain the cause and origin of the fire.

Fire and Rescue NSW Superintendent Scott Dodson said

this was a timely reminder that calling 000 for a fire emergency can be the difference between life and death, or a building or other property being saved or destroyed.

SOURCE:
Social media, 28 Sep 2021
Station 340 Umina, Fire and Rescue NSW

Outdated phones and laptops wanted

The Rotary Club of Brisbane Water is seeking donations of outdated and unwanted phones and laptops for people escaping domestic violence.

Club president Ms Cherie Simpson and vice-president Ms Jayne Mote recently handed over seven phones and one laptop to Ettalong charity The Peninsula Lighthouse.

Lighthouse chief executive Ms Natasha McDowell said the phones and laptops would be cleaned and set up for use for domestic

violence victims who could no longer use their existing devices as they faced cyber-bullying from their perpetrators, as well as their whereabouts being easy to track.

"There has been an increase in domestic violence cases during Covid lockdown so more help is needed for people to stay safe," Ms McDowell said.

The Lighthouse "guides people through the storm of trauma and abuse with counselling, practical help and referral to appropriate agencies", she said.

The Rotary has "answered

the call" to help these vulnerable people by donating old mobile phones and laptops," Ms Simpson said.

"There will be more to come." Anyone wanting to donate old phones or laptops should contact Jayne Mote on 0405 714 289.

For further information about the Peninsula Lighthouse, phone 0417 472 374 or email peninsulalighthouse.org

SOURCE:
Newsletter, 7 Oct 2021
Cherie Simpson, Rotary Brisbane Water



The trusted name in PROPERTY MANAGEMENT for
HOLIDAYS + SALES + RENTALS

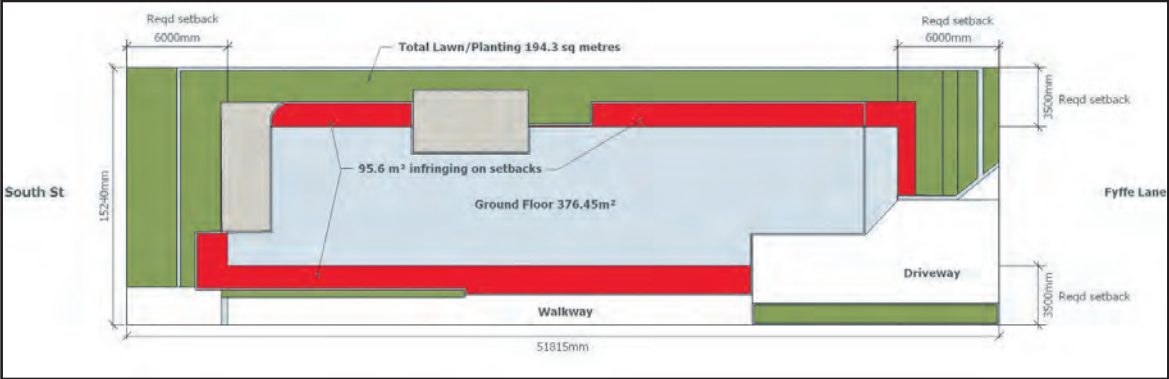


Ettalong office: 02 4344 6152 - www.ettalong.accomholidays.com

Kilcare, Daley's Pt, Ettalong, Umina and Pearl Beach, Patonga and Woy Woy



Planning



New application lodged for five units in South St

Central Coast Council has received a new development application for a five-unit residential flat building costing almost \$3.2 million at 42 South St, Umina.

A previous application submitted in February proposed six units with a total floor area of 580 square metres, with a floor space ratio of 0.75:1.

The new two-storey proposal for the 789.66 square metre lot has five units with three two-bedroom units on the ground floor, including two adaptable dwellings, and two three-bedroom units on the upper floor.

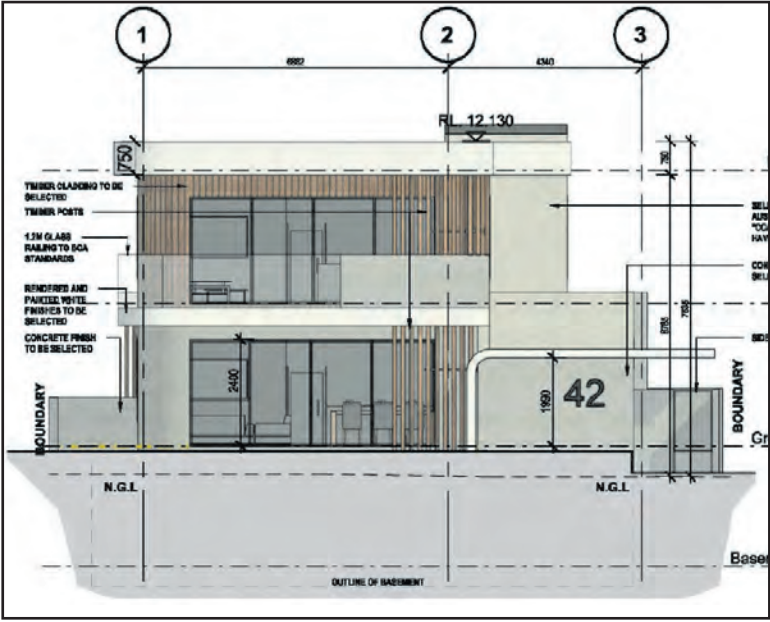
Basement parking will be provided for 10 vehicles, including two disabled parking spaces.

The vehicle access would be solely via Fyffe Lane.

With a floor area of 490 square metres, the floor space ratio would be 0.62:1 which exceeds the planning provision limit of 0.6:1.

The new proposal does not have the required deep soil area, falling short by around 40 per cent, and intrudes into minimum setbacks from boundaries, with a loss of 25 per cent of setback area.

The application also admits non-



compliance on overshadowing, causing the neighbouring property to receive less than three hours sunlight during the winter solstice.

In support of the application, consultants Clark Dowdle and Associates stated: "The incorporation of basement parking negates on-grade carparking and gun barrel driveway villa development that typically has a generic and bland presentation to

the street with minimal landscaping flanking the driveway and building.

"Thus the street presentation without a front driveway presents a superior design than most residential flat building developments in the area."

This proposal is available for public viewing and comments until October 29.

SOURCE:
DA Tracker, 4 Oct 2021
DA60728, Central Coast Council

Six two-storey units proposed for Booker Bay

The Central Coast Council has received an application for a multi dwelling development with six three-bedroom two-storey units at 386 Booker Bay Rd, Booker Bay.

The proposal is estimated to cost \$1.785 million and includes on-site parking for nine vehicles.

The application prepared by Doug Sneddon Planning Pty Ltd states: "Visitor parking is to be provided in Booker Bay Rd, where unrestricted on-street car parking is available within 60 metres of the proposed development."

The proposal does not comply with planning provisions which require deep soil areas of two metres width on side boundaries and six metres at front and back.

The driveway running down the side fence is sited only 40 cm from the eastern boundary.

Overall, compliance for deep soil areas falls 40 per cent short of requirements.

Deep soil area on the eastern boundary provides only 14.6 per cent of the required area.

Setbacks are non-compliant on every boundary except the northern boundary where the property fronts Booker Bay Rd.

On the other boundaries, the development intrudes into setbacks by between 18 and 25 per cent.

The statement in support of the application states: "The proposed development's part non-compliance with the deep soil area

and building setback guidelines is considered reasonable in the circumstances, having regard to the width of the subject land and the existing building setbacks on the subject land.

"The purpose of the deep soil area and building setback guidelines is achieved by the proposed development."

The application acknowledges additional overshadowing: "The submitted shadow diagrams demonstrate that whilst there is some additional shadowing caused by the proposal, the effect on the windows of adjacent dwellings already occurs from the current dwellings, fences, vegetation etc."

The consultant appeared to acknowledge that the original intention of the setback requirements for medium density developments was to encourage consolidation of allotments.

However, the application stated: "There is no opportunity to amalgamate the subject land with neighbouring properties in order to achieve an alternative development outcome."

It also noted that council staff had previously ignored the intention with "the non-compliance demonstrated by other contemporary multi dwelling developments in the vicinity approved by Council in recent years".

The application is open for public comment until November 1.

SOURCE:
DA Tracker, 5 Oct 2021
DA63169, Central Coast Council

Pearl Beach group claims planning provisions 'ignored'

The Pearl Beach Environment Group has written to Central Coast Council administrator Mr Rik Hart seeking a meeting with him and senior staff to discuss the "loss of the bushland environment in Pearl Beach".

The group said it "remained concerned that there is an accelerated loss of the special bushland environment of Pearl Beach both through development applications and through the incremental effects of "Exempt and Complying Development".

The group claimed that planning provisions that were meant to protect the area were being ignored.

"Increasingly we find the carefully worded provisions to meet these stated objectives in the Gosford LEP 2014 as it applies to low density residential development and the Sections of

the Gosford DCP 2013 as they apply to development in Pearl Beach are being ignored."

The group said this particularly applied "to provision of open space and landscaping in character with the special environment of Pearl Beach".

The group quoted relevant objectives of the Gosford LEP, and section 5.10 of the DCP which pertained to Pearl Beach.

The letter told Mr Hart that the introduction to the section stated: "Pearl Beach has a special character."

"It has widely recognised scenic beauty: the beach itself, the headlands, the view of Broken Bay, the surrounding hills of Brisbane Water National Park.

"The distinctive asset of Pearl Beach is its natural environment.

"Within the village is an abundance of trees and shrubs - in the reserves, in the streets

and on the private properties, and softening the visual impact of structures on the natural environment.

"It also has a profusion of bird life within the village.

"The overall effect is one of natural beauty.

"The tree canopy is the intrinsic unifying feature of the area and it is critical that it be maintained."

The group wrote that section 5.10 of the DCP was "put together following extensive consultation with the community of Pearl Beach".

"The Pearl Beach community raised money to fund the Pearl Beach Management Plan in 1989 which informed the DCP."

The group gave four examples that were at odds with the objectives of the planning provisions.

A current application sought "to remove many trees on site at 19 Cornelian Rd, Pearl Beach,

despite there being ample room on the site to position the new dwelling to avoid tree removal".

"The removal of all the trees from the site of 23 Cornelian Rd and the construction of two substantial dwellings" was "a lesson in the dangers of incremental approvals through a combination of Exempt and Complying and Development Applications".

"The over development of the site at 12 Diamond Rd and the provision of extensive hard landscaping to the front of the property" was "completely at odds with the streetscape character".

Another example was "the overdevelopment of 6 Gem Road and the excessive height of that development and its impact on views from Broken Bay; the beachfront and from Green Point".

"These are just some of the developments impacting on the special character of our small

village.

"The Pearl Beach community is also concerned that there is no forward planning for the remedial works to the Pearl Beach Lagoon as recommended in the Lagoon Study of 2020 are not being implemented."

The Pearl Beach Environment Group described itself as a not-for-profit incorporated organisation whose objective was to "protect and enhance the environment and encourage nature conservation within the village of Pearl Beach".

"Representatives of the Pearl Beach Environment Group would welcome the opportunity to meet with you as the Administrator of Central Coast Council, together with key senior members of the Central Coast Council staff to discuss these concerns."

SOURCE:
Media release, 5 Oct 2021
Mary Knaggs, Pearl Beach Environment Group

'Full house' online at Ettalong Toastmasters

Ettalong Beach Toastmasters has reported its online meetings have proved successful.

More members have been logging in, with the group experiencing a "full house".

The club normally meets at Ettalong Diggers from 7:30 to 9:30pm on the second and fourth Tuesday of the month.

However, it started online meetings due to the coronavirus lockdowns.

The online meetings have given members the opportunity to practice different techniques using the camera to tell stories, engage an audience and make an impact.

"Established in 1986, Ettalong Beach Toastmasters is a local community club that teaches speaking and leaderships skills,"

said Ms Gail Heggie.

"Whether you are looking to hone your leadership and communication skills, develop more confidence, or meet like-minded people in your community, we can help."

"Our members present prepared speeches, practice impromptu speaking (table topics), give toasts and run various aspects of the meeting."

"Ettalong Toastmasters welcomes visitors from 18 years and above."

Anyone interested in joining may attend a club meeting.

For further information, contact Gail by email at ge.heggie@bigpond.com or phone 0403 280 882.

SOURCE:
Social media, 19 Sep 2021
Ettalong Beach Toastmasters



Aboriginal health service holds first Umina vaccinations

The Yerin Eleanor Duncan Aboriginal Health Service held its first Covid-19 vaccinations at its Umina clinic on Monday, October 4.

Pictured are Dr Jay Chelladurai,

health service chief executive Ms Belinda Field, practice manager Ms Jessica Wheeler and business manager Mr Paul Hussein, ready to assist at the clinic.

The next Pfizer clinic is planned

for Umina next week.

Call the service on 4351 1040 for further information.

SOURCE:
Social media, 4 Oct 2021
Yerin Eleanor Duncan
Aboriginal Health Service

Craft centre awaits further easing of restrictions

Ettalong Beach Arts and Crafts remains in lockdown under current NSW Health orders, according to president Mr Peter Mulholland.

"Lockdown has prevented us from holding committee meetings and running our classes," he said.

"It also means that our Annual Exhibition and Sale, that was scheduled for the last weekend in October, has been cancelled."

"Current restrictions mean that Term 4 classes cannot return on time."

"However, further easing of restrictions which are estimated to be announced in late October, once 80 per cent double vaccination rate

is achieved in NSW, may make it possible to safely recommence classes from then."

"Many members have remained active with their arts at home, which has undoubtedly assisted them to survive under lockdown conditions."

"It also means that our 2022 Exhibition and Sale which is scheduled for October 28-30 next year will be very well stocked."

"Our Boobs and Bags group has continued with their great work from their homes providing regular supplies of comfort cushions for post-operative breast cancer patients to Gosford Hospital."

SOURCE:
Social media, 29 Sep 2021
Peter Mulholland, EBACC

Berejiklian departure is 'loss of talent', says Tesch

The departure of Ms Gladys Berejiklian as Premier and from parliament was a "loss of another talented politician", according to Member for Gosford Ms Liesl Tesch.

She said it was unfortunate to see a strong female leader to go.

"Despite our different political ideals, one thing we have in common is the respect for women in leadership and it is absolutely devastating to see a strong female leader leave politics."

"There is no denying that Gladys Berejiklian put her all into NSW and took on a mammoth task, especially in recent months where she has been NSW's strength during lockdown."

She said it was "a difficult day for women in leadership as we lose another talented politician in an

already male-dominated field and Liberal Party."

Ms Berejiklian will now face a public inquiry by the Independent Commission Against Corruption from October 18, which is expected to continue on for 10 days.

The investigation will focus on the period between 2012 and 2018 to determine whether Ms Berejiklian participated in conduct amounting to a breach of public trust when exercising her public functions, said Ms Tesch.

"The investigations have been launched as a result of a potential conflict of interest in Ms Berejiklian's public duties and private interests when she was in a relationship with the former Member for Wagga Wagga Mr Daryl Maguire," said Ms Tesch.

SOURCE:
Media release, 1 Oct 2021
Liesl Tesch, Member for Gosford



Where does Lucy Wicks, Member for Robertson, stand on climate change action?



With the climate denier?



With the climate sceptic?

**Concerned about climate change?
Would you like to know where
your local Federal Member stands on climate action?**

Call Lucy Wicks on 4322 2400

or send a letter or visit her office at
Level 3 -69 Central Coast Highway, West Gosford NSW 2250

Authorised by Norman Harris, 8 Lovell Rd, Umina Beach,
Secretary, Central Coast Branch of the Australian Conservation Foundation Inc #Environmentalprotector

Forum

Aged care home promotes its French chef

A local aged care home is promoting its French chef who "brings a touch of the Mediterranean" to its residents.

"A glass of wine over a fresh French-inspired lunch sounds more Riviera than residential care," said Peninsula Villages chief executive Mr Fred Van Steel.

"But that's exactly what chef Stephan Blant is proud to bring to his kitchen at Peninsula Villages.

"A third-generation French chef, Stephan trained with his father in Switzerland, before moving to Australia 10 years ago.

"Despite speaking no English when he arrived, Stephan found work at a tourist restaurant in Darling Harbour where he honed his cooking skills and practised his English.

"After working across the country, he relocated to his wife's hometown of Umina to start their family.

"Stephan brings both his French heritage and fine dining background to his work and loves to add a touch of the Mediterranean to his menu items.

"Despite leaving the glamour



of fine dining restaurants behind him, Stephan has not looked back since starting his work with older people."

Mr Blant said: "The quality of food matters at every stage of life and I like to make people happy with my food.

"What they eat every day makes a real difference to older peoples' lives.

"My first instinct in the kitchen is to go to my comfort zone, with French and Mediterranean cuisine.

"We like to make sure there is plenty of choice for residents, so alongside traditional meals, I try to incorporate foods that I love."

SOURCE:

Website, 27 Sep 2021

Fred Van Steel, Peninsula Villages

Aged care visitors must be fully-vaccinated

Visitors to residential aged care facilities must have evidence they are fully vaccinated according to rules applying from today, Monday, October 11.

BlueWave Living chief executive Mr Matt Downie said: "All visitors must be fully vaccinated for Covid, with last dose being at least 14 days prior.

"Only two visitors per resident per day will be allowed, and must be 12 years or older.

"Visits must occur in the resident's private bedroom, or other area as designated by BlueWave staff.

"We request that visitors do not to interact with other residents in BlueWave, other than those who they are visiting," Mr Downie said.

"All visitors must be screened in line with current Health Advice, and must check in via a QR code.

"We have implemented an updated version of an electronic screening and check in procedure. "This will include temperature

checks, screening questions, details about who you are visiting and linking through to NSW Health QR code for compliance.

"Our staff will be there to assist.

"All visitors must wear a mask at all times and maintain social distancing.

"Our opening hours for visits will be from 10am to 4pm daily."

Bookings are required for residents who are in a shared room.

No booking is necessary for residents who have their own private bedroom, but they may only have one visit per day with up to two visitors.

"It is wonderful that we are now able to have visitors return to BlueWave Living, and we look forward to our residents enjoying visits from loved ones," said Mr Downie.

"For those who are unable to visit, other options will continue to be available, including phone and video chats across various platforms.

"Please contact our friendly team to make a booking."

Mr Downie said fully-vaccinated residents were permitted to leave the facility by themselves or with a friend or relative for exercise or outdoor recreation only.

They must stay within the local government area, he said.

"Residents can attend family outdoor gatherings, as long as all those in the gathering are 16 years or older and no more than five persons in the gathering.

"Residents must wear a face mask.

"A risk assessment by the facility may be undertaken.

"Residents may continue to leave the facility to attend required medical appointments as previously."

Mr Downie said: "Our elders, even fully vaccinated, do remain more at risk of Covid, due to having other health issues and reduced immunity response."

SOURCE:

Newsletter, 7 Oct 2021

Matt Downie, BlueWave Living

Forum

Glasgow conference is important to the Peninsula

Peninsula residents are very familiar with the impacts of climate change.

Residents live with issues such as extraction from the borefield, coastal erosion and the heat island effect.

School staff and students live with outdoor covered areas, a feature of school character unknown to my generation.

Do school students realise our environment has changed in a very short time?

If climate change continues without drastic action, present and

certainly future school students will be forced to adapt to more changes than will be addressed by a covered outdoor area.

The Peninsula Leisure Centre is another example of change.

The former outdoor swimming centre did not have roof structures.

It would be an interesting exercise to travel around the Peninsula identifying changes to address the impacts of climate change.

Community groups are well ahead of the council in this regard and should be congratulated.

Climate change action has been simmering for too long without decisive forward movement.

For these reasons and more, the climate change conference in Glasgow is important to all Peninsula residents and the Peninsula itself.

I believe this conference is the last opportunity to take action on greenhouse gas emissions before climate change chain reactions begin, beyond control.

SOURCE:

Letter, 5 Oct 2021

Norm Harris, Umina

Thanks for the calculations

Thanks to editor Mark Snell for his vaccination calculations (PN528), as the government is not providing sufficient detail for us to identify vaccination gaps and target conversations across our community.

This data set indicates that despite the challenges accessing vaccinations the people of the Peninsula have made a huge effort to get vaxxed, with excellent results to date.

According to Mark's data, the 50+ age group are really doing well, with a over 93 per cent first jab vaccine success.

However now is no time to rest and rely on those around us for

protection.

It was great to see so many people picnicking across our community over the weekend, and the more people who get vaccinated the more we will regain the freedoms we enjoy.

The arrival of Moderna in pharmacies in the Peninsula will provide additional opportunities for those frustrated by long waits and rescheduled appointments to line up for their protection.

As always, I encourage you to take the time to discuss your vaccination options with your doctor and make the decision that is best for you.

SOURCE:

Email, 20 Sep 2021

Liesl Tesch, Member for Gosford

Public Notices

ABC "The Friends"

Support group for Public Broadcaster

Aims:
Safeguard ABC's independence, adequate funding, high standards.

Meetings through the year + social mornings.
Well-known guest speakers

0400 213 514

www.fabcnsw.org.au

Peninsula News

Community Access

offers

Classified advertising at affordable rates

Contact us for details:

4243 5333

advertising@peninsula.news

In Memoriam

Carole Lorraine VANDINE

21/06/1943 - 3/09/2021

On the 3/09/2021, I lost my sister Carole to a fatal heart attack. Carole was the kindest sweetest sister anyone could wish for. She was my best friend and the guardian of my soul and the safe harbour to moor my little boat from life's violent storms.

Carole, you are now at peace, free from all hurt and pain, playing bingo in heaven as your seat was reserved by the angels.

Highrise foreshore has me worried

Not more highrise in Ettalong!

The new proposal of a 17 metre high development along Ettalong foreshore has me worried and I am sure it worries other people as well.

If this development is allowed, it will be overreaching the height limit, overshadowing the roads and paths to the beach, overheating the already hottest part of the Peninsula, overcrowding the

parking availability.

What are we going to see and experience? A Gold Coast environment, not the nice relaxing peaceful place we know now.

Please Central Coast Council, stick to the rules and regulations.

Please Peninsula residents, complain and let the Council know.

SOURCE:

Email, 10 Oct 2021

Johanna Reygersberg, Woy Woy 2056

Rotary club collects men's and women's products

The Rotary Club of Woy Woy currently has two collections under way.

One is for men's products and the other is for women's products.

For Coast Shelter, the club is collecting soap, toothpaste, toothbrush, shampoo, conditioner, tissues, razors, male deodorant, aftershave, caps, beanies and socks for men.

Collection point for these is with Julie Allen. Call her on 0401 226 367 to arrange drop off time.

For Share the Dignity, the club is collecting period products such as tampons and pads, and also incontinence products.

The collection point for these is with Sue Tee at Ettalong Beach Medical Centre, 61 Picnic Parade, Ettalong, between 9am and 5pm

Monday to Friday.

Rotary club president Ms Julie Jones said: "Do your best, and get your family and friends involved."

"The more the merrier and all items will be gratefully received by both Share the Dignity and Coast Shelter."

SOURCE:

Newsletter, 5 Oct 2021
Julie Jones, Rotary Woy Woy



Council tree planting used as shade tree example

The Grow Urban Shade Trees group has used council street tree planting in Woy Woy as an example of trees that could be planted more widely across the Peninsula.

Weeping lilly pilli (waterhousea or syzygium floribunda) was "an east coast native that ticks all the boxes", said group member Ms Jenny Wilder.

"It is robust and ornamental, making it a favourite for use in

urban settings.

"One of the larger lilly pilli varieties, waterhousea floribunda packs a serious punch when it comes to creating shade."

"And what's better than one waterhousea floribunda?"

"A whole row of course - as can be seen outside Woy Woy library (pictured)".

SOURCE:

Social media, 25 Sep 2021
Jenny Wilder, GUST



Activity bags made for Coast Shelter in record time

Coast Shelter has been donated 75 activity bags after a joint effort by the Woy Woy branch of the Country Women's Association and the Rotary Club of Gosford City.

CWA branch members made the bags in a "record three days", said branch president Ms Jane Bowtell.

The Rotary club supplied the goods to go inside the bags.

"These bags, and their contents, will be used by Coast Shelter clients in their various therapy

programs," said Ms Bowtell.

"The bags were handed over last week to Coast Shelter with the Woy Woy seamstresses and Rotary in attendance."

"It's always a pleasure to fulfil a need whether large or small and we are quick off the mark to get the job done in record time if possible."

"Lockdown has its challenges but maintaining the ability to serve our community is always at the forefront of what we do."

SOURCE:

Social media, 2 Oct 2021
Jane Bowtell, CWA Woy Woy



Liesl Tesch MP
Member for Gosford

How can I help?

Schools and education

Community Recognition Awards

Anniversary & birthday messages

Fair Trading

Hospitals and health

Main roads

Police and Emergency Services

Public housing

Trains and public transport



📍 20 Blackwall Road, Woy Woy NSW 2256

@ Gosford@parliament.nsw.gov.au

☎ (02) 4342 4122



Students become pen pals of nursing home residents

Woy Woy South Public School has started a pen pal arrangement between its students and residents of Hammond Care Nursing Home in Woy Woy.

"In Term 4, we are asking students if they would like to start a pen pal system where we can exchange notes, pictures, stories, jokes and share photos about

our lives with the residents of Hammond Care," said principal Mr Matt Barr.

"We know Covid has been difficult for everyone and we are all thinking of our elderly community in this time.

"The Notes to Nursing Homes initiative kicked off with the Hammond Care residents and staff enjoying a beautiful morning tea.

"Many of our students would remember one of the residents Grandpa Fred, who has listened to hundreds of students read to him at Woy Woy South.

"We look forward to this relationship blossoming between residents and our students."

SOURCE:
Social media, 21 Sep 2021
Matt Barr, Woy Woy South Public School



Year 12 students may access school

Year 12 students at Brisbane Water Secondary College Woy Woy campus will be able to access the school from October 18, as needed to prepare for their HSC, according to campus principal Ms Rebecca

Cooper.

"From October 25, all remaining year groups will return together, bringing the return for that final cohort forward a week from November 1."

Ms Cooper said the school did not receive detailed guidelines until

the evening or the day following a media announcement by the Premier.

"Once I receive them, I will send out a more robust update."

SOURCE:
Social media, 7 Oct 2021
Rebecca Cooper, BWSC Woy Woy

Revised access plan for Ettalong school

Ettalong Public School has issued revised school access plans following return-to-school changes announced by Premier Mr Dominic Perrottet.

Students in Kindergarten, Year 1, K/6JL and K/6P's return to face-to-face learning at school on October 18.

Kindergarten KS and KT will use the Karingi St (office) gate, while KL and KZ will use the Uligandi St (hall) gate.

Classes K/6JL and K/6P will use the Karingi St gate opposite the Support rooms.

Year 1 will use the Karingi St main gate (office side).

Students in Years 2, 3, 4, 5 and 6 as well as students in K/6M and K/6R will return to school on October 25.

Year 2 will use the OoSH gate in Karingi St near the Year classrooms.

Year 3 will use the Uligandi St main gate (hall side).

Year 4 will use the Uligandi St bus gate opposite the 3-6 COLA.

Year 5 will use the basketball court of the laneway.

Year 6 will use the Karingi St bus gate near the Year 6 classrooms.

Classes K/6M and K/6R will use the Support gate in Karingi St opposite the Support rooms.

"Families are able to arrive and depart together via the Uligandi St main gate (hall side) and are strongly encouraged to utilise the kiss and drop bay," said relieving principal Ms Jodie Campbell.

SOURCE:
Social media, 7 Oct 2021
Jodie Campbell, Ettalong Public School

Kindergarten information

Umina Beach Public School is asking parents of children enrolled for next year's kindergarten to contact the school if they have not had an "Early Birds interview".

The school's Kindergarten 2022 information packs have been prepared and available for collection.

The details include required Covid-safe practices.

SOURCE:
Social media, 3 Oct 2021
Chad Tsakissiris, Umina Beach Public School

Shipping container sought

Woy Woy Peninsula Netball Association is seeking a shipping container and a skip bin ahead of its new clubhouse project.

The association is seeking quotes for a three-month onsite rental of a 40ft shipping container at the Lemon Grove netball courts.

It is also seeking a removalist to move association goods from the clubhouse into the container, as well as a skip bin.

The association executive indicated a preference to support local business.

Inquiries and expressions of interest should be sent by email to wwpna@bigpond.com.

SOURCE:
Social media, 4 Oct 2021
WWPNA

Tribute paid to club patron and 'legend'

Umina Beach Men's Bowling Club secretary Mr Peter Springett has paid tribute to the club's patron, Mr Wal Rainbow, who died at the age of 95 last Wednesday, October 6.

"Wal passed away peacefully in a nursing home in Kempsey.

"Wal and his wife Shirley, aged 96, had been together since they were 16 years of age and were still very much in love with each other.

"Wal was very influential in the formation and running of Zone 15 Bowls Central Coast and was made a Life Member of Bowls Central Coast Zone 15 on August 17, 2017."

He is pictured (left) being presented with his Life Membership by current Zone 15 secretary and treasurer Doug Rose.

"Wal was also a much-loved legend at Umina Beach Bowling Club, where he is the current Club Patron.

"The funeral service will be held at Walker's Funeral Home in Kempsey on Friday, October 15.

"The funeral will be live streamed."

Mr Springett described Mr Rainbow as "a lovely man and a true legend".

SOURCE:
Social media, 9 Oct 2021
Peter Springett, UBMBC

Netball annual meeting

Woy Woy Peninsula Netball Association has announced it will hold its annual general meeting at 7pm on Monday, November 15.

It is yet to be decided whether the meeting will be held online or at a venue.

All positions will be declared vacant at the meeting.

Nominations are now being accepted for all positions via Google Forms, closing at 5pm

next Monday, October 18.

Only nominations that have been seconded by then will be accepted.

All position descriptions are in the WWPNA Constitution which is available from the WWPNA website.

For further information, email the association at wwpna@bigpond.com.

SOURCE:
Social media, 14 Sep 2021
WWPNA

Bowls resumes at Umina Beach

Bowls will resume at Umina Beach Bowling Club from today, with a limit of 30 per green, according to men's club secretary Mr Peter Springett.

"You may consume drinks outside when bowling and standing up to drink is permitted outside only.

"This may occur on the greens.

"Ladies day will be on Tuesday, October 12, and they will utilise the green."

Only fully vaccinated patrons will be allowed entry into the club.

Patrons are asked to bring their membership card or valid photo ID, face masks, the Service NSW Mobile App to check-in, and their Covid Vaccine Record confirming they are fully vaccinated with two doses.

With questions, contact Club Umina at 4343 9999.

SOURCE:
Social media, 4 Oct 2021
Peter Springett, UBMBC

Soccer annual meeting

The annual meeting of the Southern and Ettalong United Football Club will be held at 7pm on Monday, October 25.

The meeting will be held at the club house at James Browne Oval at 52 Alpha St, Woy Woy, or online via Zoom depending on the

restrictions in place at the time.

The meeting will include reports about the past year as well as election of officer-bearers for the coming year.

SOURCE:
Website, 26 Sep 2021
SEUFC