



Peninsula has 15 coronavirus exposures over six sites

A total of 15 coronavirus exposures have been identified over six sites on the Peninsula in the last two weeks.

The sites were Woolworths in Umina and Woy Woy, Coles in Umina, Umina Charcoal Chicken, King of the Pack in Umina and Cafe on Rawson in Woy Woy.

The exposure sites were announced an average of more than eight days after the event.

Only three announcements were made less than seven days afterwards.

The sites, dates, times and announcements were:

Woolworths Umina: September 1, 4:15pm-4:45pm (announced September 8); September 5, 7pm to 7:25pm (September 9); September 5, 6:15pm to 6:45pm (September 14); September 7, 9:30pm to 9:50pm (September 14).

Woolworths Woy Woy: August 30, 5:10pm to 6pm (September 8).

Coles Umina: September 6, 4:40pm to 5pm (September 17); September 7, 3:50pm to 5:10pm (September 19); September 8, 6:20pm to 6:40pm (September 17). September 11, 4:10pm to 4:35pm and 5:35pm to 5:55pm (September 19); September 13, 3pm to 3:20pm (September 19); September 14, 6:10pm to 6:30pm (September 19).

Umina Charcoal Chicken: September 8, 6:20pm-6:30pm (September 15).

King of the Pack: September 11, 2:25pm to 2:40pm (September 19);

Cafe on Rawson: September 6, 7:55am to 8:35am (September 19);

SOURCE:
Media releases, 8-19 Sep 2021
Central Coast Local Health District

Hospital plans new second-storey ward

A proposal to build a \$9 million second-storey hospital ward with 28 beds has been received by Central Coast Council.

Health Care Australia has submitted a development application for its Brisbane Waters Private Hospital in Vidler Ave, Woy Woy, that would see floor area, total bed numbers and car parking all increase by 25 per cent.

"The proposed development aims to enhance the existing hospital's capacity and availability of on-site parking," according to the application submitted by SLR Consulting Australia Pty Ltd.

The plans see the hospital's total floor area increase by 1731 square metres from 7670 square metres to 9401 square metres.

Total bed numbers would

increase by 35 from 139 to 174.

Car parking spaces would increase by 15 from 118 to 133.

Staff numbers are expected to increase by 12 from 79 to 91, a 15 per cent increase.

The second-storey addition to the northern hospital ward would result in an additional 28 patient rooms, six group rooms, four consulting rooms, gym, art room, "breakout space" and staff rooms, SLR stated.

Internal reconfiguration of the existing hospital would replace a kiosk and two "rejuvenation rooms" with five new patient rooms.

A small new addition at the southern corner of the existing hospital building would add two more patient rooms.

Two single dwellings located on hospital grounds opposite the hospital would be demolished to

provide 23 car parking spaces.

However, five spaces adjoining the dwellings and three spaces at the southern corner of the hospital building would be removed.

The application claims to comply with all planning provisions, with the exception of "the provision of shade trees supporting the new car park expansion".

"Primarily the proposed changes are to provide additional patient beds to the existing hospital and provide a number of minor reconfigurations and additions elsewhere in the hospital to respond to the changing needs of both patients and staff," the consultants said.

The application is open for public comment until October 18.

SOURCE:
DA Tracker, 18 Sep 2021
DA63014, Central Coast Council

Supporting the Peninsula community

Only Peninsula advertising
Only Peninsula news

Time off for running repairs

As things get older, they tend to need more maintenance.

This applies to the editor of Peninsula News, as much as to anything else.

"I will be having a short stay in hospital following the next issue of Peninsula News for some running maintenance," said editor Mr Mark Snell.

He said he expected he would need some recovery time afterwards.

As a result, the edition of Peninsula News scheduled for October 5 will now be published on October 11.

He said help to produce that edition of the newspaper would be appreciated.

Offers of help should be directed to editor@peninsula.news.

SOURCE:
Mark Snell, 20 Sep 2021

Nothing extra

With the lockdown, there has been less activity for Peninsula News to report.

As a result, we will not publish Peninsula News EXTRA, our electronic supplement, until after the lockdown is lifted.

In the meantime, feel free to scan the code to add your name to the list to be informed when it is next published.

Peninsula News EXTRA
Be notified. SCAN here.



Next issue: Monday, October 11

Email: contributions@peninsula.news

Cases total 16 in a fortnight

A total of 16 new coronavirus cases have been reported on the Peninsula in the fortnight ending Friday, September 17.

In the past two weeks, 11 new cases have been reported for the 2257 postcode: one for each of September 6 and 7, two for September 11, two for September 15 and five for September 16.

Five new cases were reported for the 2256 postcode area: three

for September 8 and one for each of September 12 and 13.

The new reports mean that there have been more cases since August 10 than in the entire period before that.

A total of 17 cases have been reported for the 2257 postcode since August 10, bringing the total to 31 cases.

A total of six cases have been reported for the 2256 postcode

since August 12, bringing the total for that postcode to 10.

Also reported in the past fortnight were 15 exposure times at six sites around the Peninsula, including Woolworths and Coles in Umina.

These figures were the latest available before going to press last night, Sunday, September 19.

SOURCE:
Website, 17 Sep 2021
data.nsw.gov.au

Peninsula News

Community Access

Peninsula News is a fortnightly community newspaper for the Woy Woy Peninsula, owned by The Peninsula's Own News Service Inc, a local non-profit incorporated association. Its aims include providing a viable, non-partisan news medium and forum exclusively for the Peninsula and developing a strong sense of community on the Peninsula.

Editor: Mark Snell
editor@peninsula.news
Advertising: Frank Wiffen
advertising@peninsula.news

NEXT EDITION: Peninsula News 529
Deadline: Thursday, October 7
Publication date: Monday, October 11

CONTACT DETAILS
NEWS: contributions@peninsula.news
ADVERTISING: advertising@peninsula.news
PHONE: 4342 5333 - Please leave a message
POSTAL ADDRESS: PO Box 585, Woy Woy NSW 2256

Please note: Peninsula News currently has no paid employees, and it may take a little time for us to get back to you. Our volunteers usually have other jobs and commitments, which compete for their time.

EMAIL ISSUES?
When emailing us, you will note that the domain name is PENINSULA.NEWS only. There is no .com or .com.au. If your email bounces or does not appear to have reached us, please check the address and try again. If this still does not work, try our old fallback address or call us by phone and leave a message.

Fallback email address: editor@peninsulanews.asn.au

Editorial policy and guidelines

At its heart, Peninsula News is a community effort.

It welcomes and relies on the contributions provided voluntarily and at no cost by local organisations, groups and residents.

The newspaper aims to be accessible to the community - both through making its columns accessible to community groups and by having copies available in accessible locations, including through its website.

The following policies and guidelines are designed to support the aims and standards of the newspaper.

Locality

The newspaper's editorial policy reflects a desire to reinforce the Peninsula's sense of community.

To qualify for publication, articles must have specific relevance to the Peninsula. For example, they must be about activities or events happening on the Peninsula or be organised by or involving Peninsula people.

The newspaper is not regional or national in nature, so regional or national issues will not be canvassed except as they affect the Peninsula.

Regional sports will only be covered from the perspective of Peninsula clubs. Regional plans will only be aired in the context of their ramifications for the Peninsula.

Peninsula News aims to be inclusive of as much of the Peninsula community as possible.

Readability

To ensure that the newspaper serves its purpose, it must be readable and represent the interests and activities of the community in its content.

Contributions to the paper are edited to consistent standards of readability. Guidelines are available for intending contributors.

All items will be dated. They must contain the name of the author to whom the contribution may be attributed, with their first name spelt out, along with their suburb or organisation. Anonymous contributions will not be accepted.

Forum letters

The Forum section provides the opportunity for readers to express their views on any aspect of Peninsula community life, with the aim of reflecting the community's diversity of opinion.

Nevertheless, letters may be edited for readability, including for length, spelling and grammar, and to avoid legal liability on the part of the newspaper, or they may be declined altogether.

Contributors are asked to keep their

contributions to the matter at hand, and to focus on the issues and not abuse or insult others.

Other than in the case of holding public figures to account, criticism of others (as opposed to criticism of particular opinions) is unlikely to be published in the interests of facilitating the expression of a diversity of views.

All letter writers need to supply name, address and contact details. Only name and suburb will be published.

Contributors who do not wish the wording of their letter to be changed at all should make a note to this effect when submitting their letter. In some cases, this may result in the letter not being published.

Corrections

We try to be as accurate as possible. However, mistakes can still slip through.

If you believe we have got something wrong, whether an error of fact or interpretation, we ask that you write to us by email with details for publication. These corrections may appear as Forum letters or as news items and should conform to our requirements for news and Forum contributions.

Source lines

Peninsula News includes "source lines" at the end of each article which aim to provide readers with information about where and how we came across the information, so that they might judge for themselves the veracity of what they are reading.

It should not be assumed that the article is a verbatim reproduction of the source. Similarly, it should not be assumed that any reporter listed is necessarily responsible for writing the whole news item. Source lines are not by-lines.

Often articles come from a number of sources. They are edited for readability and reader interest and given different headings, and consequently can be expressed quite differently from the source material.

Peninsula News usually receives its information in three ways: It is sent to us by someone wanting to promote their activities; it is sent to us in response to our inquiries; or it comes from a newsletter or other document to which we have access.

Sometimes we may interview a person or report what they said at a meeting.

The following descriptions are used:

Media Release - unsolicited contributions.

Media Statement - sent in response to our questions. **Website** or **Social Media** - information published online. **Newsletter** or **Report** - published in print or online. **Interview** or **Meeting** - statements recorded by a reporter.

Forum contributions may be: **Email** if sent electronically and **Letter** if written on paper.

Progress association annual meeting

The Pearl Beach Progress Association will hold its annual general meeting at the Memorial Community Hall at 5pm on Saturday, October 9.

If Covid-19 regulations effective at the time prevent the meeting being held in the hall, the meeting will be held online via Google Meet. If the hall can be used then

numbers will be limited based on Covid-19 constraints.

Members will be notified prior to the meeting of the Google Meet link whether the meeting is held in the hall or entirely online.

All members and friends of the association may attend the meeting.

However, Friends of Pearl Beach and non-members are not

eligible to vote at the meeting.

The meeting will hear the president's annual report and received the audited financial report for the year.

It will elect a committee and an auditor for the coming year.

SOURCE:
Website, 16 Sep 2021
Pearl Beach Progress Association

Help wanted to water Guyangil Park

The Grow Urban Shade Trees is seeking volunteers to water our Guyangil Park in Australia Ave, Umina, once each month.

"All that's required is a spare 75 minutes on a weekday to help the plants survive the hot weather," said group member Ms Deb Sunartha.

"Our GUST team plus one local volunteer have been doing the watering of the young plants which are doing just fine.

"Some extra help would be much appreciated."

SOURCE:
Social media, 12 Sep 2021
Deb Sunartha, GUST



Ferry engine restoration well under way

The restoration of an engine by Mr George Conway for Central Coast Ferries historic ferry, the Codock, is well under way.

Ferry service co-owner Ms Bets Conway said: "George has been

restoring the Gardner engine for a few months.

"He's doing an amazing job. "It looks incredible."

SOURCE:
Social media, 10 Sep 2021
Bets Conway, Central Coast Ferries

House damaged in Umina fire

A house in Australia Ave, Umina, was "severely damaged" in fire on the evening of September 6.

Firefighters from the Umina station responded to the house fire in Australia Ave just before midnight.

They found "the house well alight with the occupant outside

unharmed".

"Four fire trucks and 16 firefighters fought the fire for several hours.

"Neighbouring properties were saved."

SOURCE:
Social media, 7 Sep 2021
Station 340 Umina, Fire and Rescue NSW

Patonga brigade live online

Patonga Fire Brigade has given its first online fire safety video.

The 14-minute presentation was live on Facebook and is available for replay.

The brigade is willing to answer questions viewers may have.

SOURCE:
Social media, 11 Sep 2021
Patonga Fire Brigade

Just about average September rains

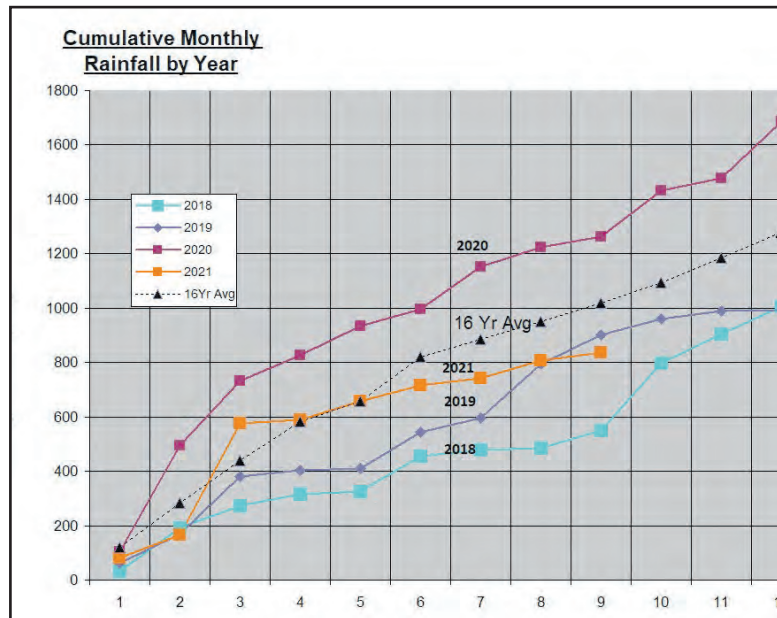
Rainfall on the Peninsula has totalled 31.6mm for the month so far, to Friday, September 17.

Just over halfway through the month, the rainfall was just a little less than half the average for September of 66mm.

Most of the rain was recorded on just one day - 22.5mm on September 14.

The cumulative total for the year stands at 837.4mm, 17.7 per cent less average for the end of September of 1018mm and more than one third less than the average annual figure of 1278mm.

SOURCE:
Spreadsheet, 17 Sep 2021
Jim Morrison, Umina



Community group seeks owners of ‘abandoned’ boats

The Bays Community Group is seeking the owners of 17 boats that have been left on the waterfront at the end of Bassan St, Woy Woy Bay.

“Over the years the number of boats left at the end of Bassan St has steadily increased,” said group president Ms Gwynneth Weir.

“There are now 17 boats there, many of which have not moved in years.

“The Committee is aware that this is an issue of concern.

“Many members of the community have expressed the view that they would love this to be a place to sit, relax and enjoy the view but at the moment boats are filling this space and there is no hope of having a seat installed.

“We have over 550 properties in The Bays and, at the moment, 17 boat owners are occupying this space which should be available

for so many more to enjoy as well.

“If you do have a boat there please ensure that it is stored such that the rest of the community is able to enjoy the space.”

Ms Weir said that in March the committee had contacted the council about the number of apparently abandoned boats left on public land around The Bays.

She said council staff eventually replied, stating: “There is a procedure that Council must undertake before the boats can be removed.

“This includes placing stickers on the offending items to notify the owners that they may be removed.

“This is to be carried out by Council’s Rangers.

“We have now asked the Rangers to attend to the items at Raymond Rd.

“As staff numbers have now been reduced, that the issue hasn’t

been granted a high priority.”

Ms Weir said: “Despite this less than hopeful response, boats in several locations around The Bays that looked to have been abandoned were ‘stickered’ by the council.

“However, it would appear that the boats at the end of Bassan St were not included in this exercise.

“We have now contacted the Council again to look specifically at the boats at the end of Bassan St.

“The Council does have a policy regarding Watercraft Storage on Public Land Policy.

“The key points of the policy are that boats are allowed to be stored on public land if they are seaworthy, not abandoned and are not preventing the public from accessing the land.”

SOURCE:
Newsletter, 14 Sep 2021
Gwynneth Weir, The Bays Community Group



Aboriginal health clinic to open in Umina

A new aboriginal health outreach clinic is to open at the former premises of Family Medicine Umina Beach, in Berith St, which closed last week.

In the short term, it will run a Covid-19 vaccination clinic, but officially take over the premises from Dr Jay Chellaldurai in November.

“Yerin Eleanor Duncan Aboriginal Health Services Ltd is opening the clinic on the southern end of Darkinjung Country to respond to health needs of the aboriginal community living in the Peninsula region,” said Yerin chief executive Ms Belinda Field.

It would be the only dedicated aboriginal community-controlled health service with GPs, nurses and aboriginal health staff, she said.

“We have to be swift and take a self-determining role in creating this new service and extending our services located at Wyong to the aboriginal community residing on the Peninsula.”

“The board, community and key



partner organisation Mingeletta Aboriginal Corporation, have recognised for many years the need to establish a culturally-responsive health service in this area.”

Ms Field said the service would “respond to the large gap in health expectancy that Aboriginal people continue to experience by offering local community solutions”.

“In collaboration with Dr Jay and his team, Yerin Eleanor Duncan will start to offer vaccines to the local aboriginal community from Tuesday, October 5, to boost the vaccination rates and will officially take over the premises effective November.”

SOURCE:
Media release, 17 Sep 2021
Belinda Field, Yerin Eleanor Duncan

Dom is accepted to attend youth science forum

Brisbane Water Secondary College student Dom Hall has been accepted to attend Rotary’s 2022 National Youth Science Forum in January, having been nominated by the Rotary Club of Umina Beach.

The forum attracts outstanding science and technology students from throughout Australia and will be a great step for Dom towards his career goal of becoming an engineer, according to club publicity officer Mr Pat Lewis.

“The forum will be a 12-day program from January 10 to 25, with a combination of in-person and digital experiences.

“Participants will experience keynote speakers, lectures, hands-on workshops, debates, expos and enriching social activities.

“In-person visit days and events will be held over a week of the program at major city hubs across the country, enabling students to

meet each other and network with like-minded peers.

“A continuous program of digital events will run alongside the in-person events meaning the program is accessible to all.


“This means the Fourm is still accessible and stimulating should there be a Covid-19 hotspot emerge or lockdown called at a hub location.”

Mr Lewis said Dom would have the opportunity to participate in tours of science and technology facilities, and learn about cutting edge research.

He would be able to engage with industry partners and research providers, and learn about university and STEM career pathways.

He would be able to mix with other like-minded students and network with former Forum participants.

SOURCE:
Media release, 19 Sep 2021
Pat Lewis, Rotary Umina Beach



ACCOM
PROPERTY

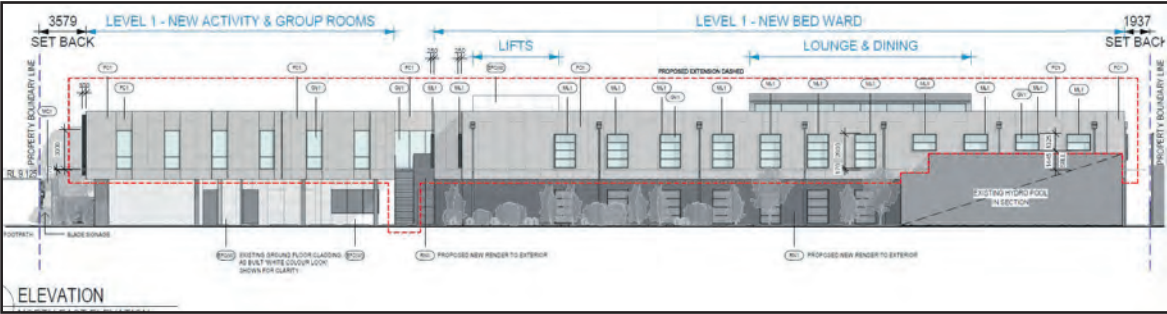
**The trusted name in PROPERTY MANAGEMENT for
HOLIDAYS + SALES + RENTALS**



Ettalong office: 02 4344 6152 - www.ettalong.accomholidays.com

Kilcare, Daley’s Pt, Ettalong, Umina and Pearl Beach, Patonga and Woy Woy





Hospital additions are ‘well-designed modern facilities’

A proposal to add 35 beds and 15 parking spaces to a local hospital has been described by the consultants who submitted the application as adding “well-designed modern facilities”.

In their application which includes a second-storey ward at Brisbane Waters Private Hospital in Woy Woy, SLR Consulting Australia stated: “The proposal aims to further enhance the existing medical services by providing a new modern ward at the hospital to further increase the ability of the hospital to service the growing Central Coast region.

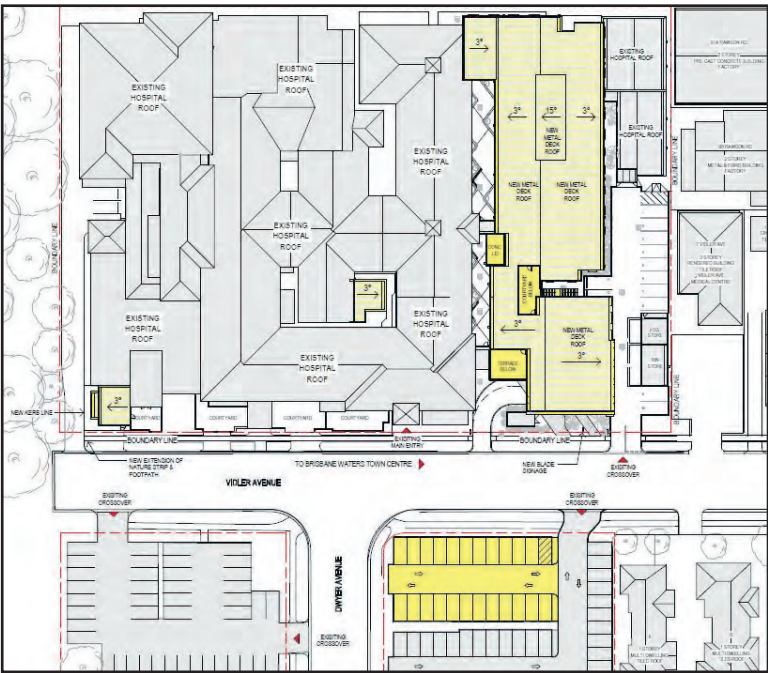
“Brisbane Waters Private Hospital offers a comprehensive range of specialist health services and supports the larger health precinct established in Woy Woy with its co-location with Woy Woy Public Hospital.

“Some of Brisbane Waters Private Hospital’s key services include leading surgical practices, rehabilitation, infectious disease specialists, and geriatric medicine.

“The proposed development aims to enhance the existing hospitals capacity and availability of on-site parking.

“The design of the development incorporates appropriate storm-water management, respects the natural environment, and minimises potential amenity impacts on neighbouring properties.

SOURCE:
DA Tracker, 17 Sep 2021
DA63014, Central Coast Council



Planning forum to be held at Gosford

The Central Coast Community Better Planning Group and Central Coast Friends of Democracy will be co-hosting a public planning forum at Gosford RSL in West Gosford on Saturday, October 23.

The forum will run from 8:30am to 3pm and will cost \$20 per person.

Better Planning Group chair Mr Gary Chestnut said the two community organisations wanted residents to have more influence over how the Central Coast will be developed in the future.

“Since 2015, we have had a forced council amalgamation, the introduction of State Environmental Planning Policies

and planning panels – all of which have taken decision-making about development on the Central Coast out of the community’s hands,” Mr Chestnut said.

“The Central Coast local government area has also spent almost half of its first five years under Administration which has further eroded the community’s influence in decision-making.”

Former Central Coast Council mayor and founder of Central Coast Friends of Democracy, Ms Jane Smith, said the community planning forum will be a “first step” towards giving the community a greater say in the region’s future.

“This event will be an opportunity to listen to current decision-makers from Central Coast Council, local and state organisations and

activists.

“It will also be a platform for you to share your concerns and ideas about planning and developments in your own neighbourhood and the whole region.

“At the moment we are voiceless.

“Decisions are being made behind closed doors and with the flick of a pen that have long-term consequences for the local environment, for the amenity of our villages and suburbs – for our beloved lifestyle.

Those wishing to attend the planning forum can register via <https://www.ccfriendsofdemocracy.com/events>

SOURCE:
Media release, 10 Sep 2021
Gary Chestnut, CC Better Planning Group

Groundwater extraction to resume under Water Plan

Central Coast Council’s groundwater extraction “borefield” on the Peninsula, which “has been operating in standby mode”, would be brought online in around three years, according to the council’s draft Water Security Plan.

An associated leaflet supporting the groundwater option states: “Council is looking to provide five megalitres per day from groundwater, commencing the production output at the Woy Woy Groundwater Treatment Plant to produce three megalitres per day and refurbish the existing Mangrove Creek and Bangalow borefields to produce approximately two megalitres per day.”

The cost is estimated to be 66 cents a kilolitre – “the lowest levelised cost compared with Council’s other shortlisted options”.

The cost to build the option is just \$500,000, because “the majority of required infrastructure is currently in place”. Annual operating cost is estimated at \$400,000.

However, the yield “is relatively low compared to other options”, several of which cost more than \$100 million to build.

The leaflet described the reliability and resilience of groundwater extraction as high, as “natural underground reservoirs provide a reliable source of water, but still rely on rainfall to recharge”.

It claimed environmental impacts are low, with “low energy use dependent on the level of treatment provided”.

It stated that environmental baseline monitoring was required to ensure potential ecological risks were understood and managed.

It also claimed social and cultural impacts were low, with “community interest in process, reliability and safety”.

The delivery timeframe was three to seven years.

The draft plan states: “Groundwater can be a replenishable and sustainable source of water.

“Our approach to recommissioning and enhancing

our groundwater use includes restoring the existing groundwater systems at Woy Woy, and monitoring the performance and impact on extraction for long-term sustainable practice.”

Actions listed in the plan include investigating the sustainable yield for groundwater at Woy Woy, and ongoing performance monitoring of extraction on the groundwater for a sustainable yield.

In a frequently-asked questions section, it is stated that Central Coast Council has an existing licence to extract and treat groundwater from the shallow aquifer at Woy Woy Peninsula.

“Existing government regulations are in place to ensure that Council extracts groundwater in a sustainable manner.

“The extraction of groundwater by Council is governed by licence conditions and water sharing plans regulated Department of Planning Industry and Environment.

“Regular environmental monitoring is undertaken to assess potential impacts of groundwater extraction on the aquifers and environment, including Groundwater Dependent Ecosystems.”

However, no detail of the monitoring has been included in or with the draft plan.

“Further environmental and hydro-geological investigations will be undertaken at existing and potential groundwater extraction locations to confirm the yield potential of the aquifers as well as any environmental impacts of increased extraction.

“As part of the Central Coast Security Plan, Council proposes to utilise the existing groundwater allocation and investigate the potential to increase extraction of water within the current limits set in place and regulated by the Department of Planning, Industry and Environment.”

The plan is on exhibition for public comment until September 28.

SOURCE:
Website, 17 Sep 2021
Draft Water Security Plan, Central Coast Council

Ettalong foreshore petition gains 1200 signatures

A petition opposing the rezoning of Ettalong foreshore to increase the building height to 17 metres has gathered 1220 signatures.

The petition also opposes an increase in the floor space ratio on the foreshore.

It calls on Central Coast Council “to review the ongoing erosion to the foreshore” and to ensure the

Council and ratepayers will “not be liable for ongoing repairs in this sensitive area as further erosion will inevitably occur”.

It also calls for approval of the “overdue” Central Coast Local Environment Plan and Development Control Plan to be given in this year.

SOURCE:
Website, 17 Sep 2021
Change.org

Slow under-50s vaccination uptake

Vaccination of Peninsula residents appear to be continuing at a rate of around 8500 doses a fortnight, according to figures on the NSW Government Covid-19 website.

This is around the same rate as in the previous month.

However, the figures also appear to show a slow uptake in the under-50s, compared to the state average, and a lower proportion of full doses in the over-50s.

Figures derived from the website show that the proportion of the eligible population which has received a first dose has gone from a percentage in the low 70s on September 2 to around 80 per cent on September 16.

Recipients of full doses have increased from percentages in the mid-30s to the high 40s.

Total injection numbers in the 2256 postcode area have increased from 14,500 to 17,500, while the numbers for the 2257 postcode have grown from 27,500 to 33,000.

The average number of doses

| Population | 2256 | 2257 |
|--------------|-------|-------|
| Eligible | 13766 | 25357 |
| > 50 years | 7700 | 15000 |
| < 50 years | 6000 | 10300 |
| Injections | | |
| Total | 17500 | 33000 |
| > 50 years | 11750 | 22000 |
| < 50 years | 5750 | 11000 |
| Doses/person | | |
| > 50 years | 1.53 | 1.47 |
| < 50 years | 0.96 | 1.07 |
| Percentages | | |
| > 50 years | | |
| One dose | 96 | 91 |
| Two doses | 56 | 55 |
| < 50 years | | |
| One dose | 60 | 67 |
| Two doses | 35 | 40 |
| All ages | | |
| One dose | 80 | 81 |
| Two doses | 47 | 49 |

per person has grown from 1.33 to 1.53 for over-50s and from 0.71 to 0.96 for under-50s in the 2256 postcode.

The corresponding figures for the 2257 postcode show an

increase 1.28 per person to 1.47 for over-50s and 0.80 to 1.07 for under-50s.

The derived figures show that 80 per cent of the 2256 population and 81 per cent of the 2257 population have received first doses.

The over-50s population in the 2256 postcode area has a first dose figure of 96 per cent, while the same population in the 2257 postcode area has a first dose figure of 91 per cent.

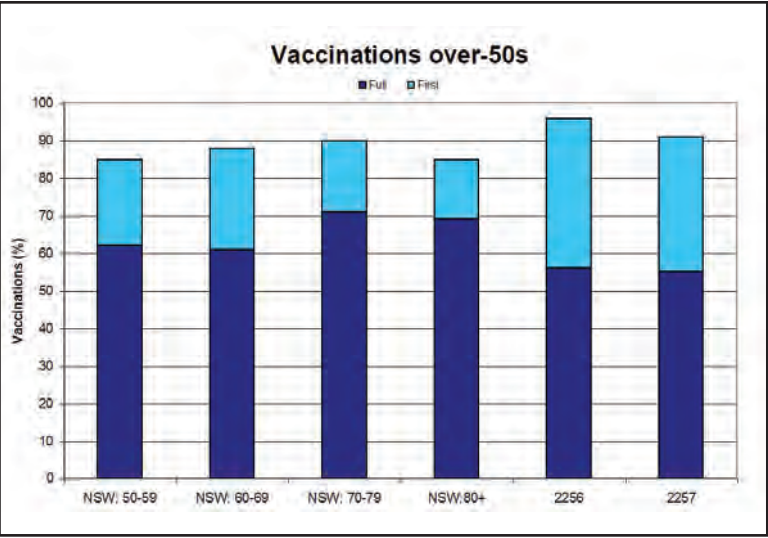
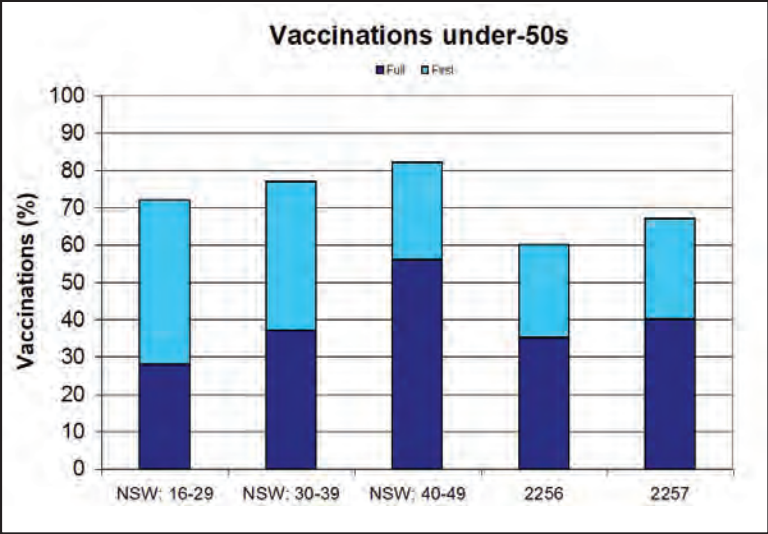
The first dose figure for the under-50s in 2256 is 60 per cent, while the figure for that age group in 2257 is 67 per cent.

Second doses have been administered to 47 per cent of the 2256 population and 49 per cent of the 2257 population.

Of over-50s in the 2256 area, 56 per cent are fully vaccinated, while in 2257 55 per cent are fully vaccinated

The proportion of under-50s fully-vaccinated is 35 per cent in the 2256 postcode and 40 per cent in the 2257 postcode.

SOURCE:
Website, 16 Sep 2021
Find the Facts about Covid-19,
NSW Government



Melissa helps at Covid ICU

Brisbane Waters Private Hospital's perioperative services manager Ms Melissa Porter was among a number of the hospital's team who offered to care for Covid-19 patients.

She joined a fellow nurse from Hurstville Private Hospital in staffing the Dubbo Hospital Covid intensive care unit.

Melissa was among those who put up their hand up to support regional health teams to care for Covid-19 patients.

"Thanks Melissa and all our Healthcare Australia staff who have stepped up to support on the front line in combatting Covid-19,"



said hospital chief executive Ms Debbra Ritter.

SOURCE:
Social media, 14 Sep 2021
Debbra Ritter, Brisbane
Waters Private Hospital

Aged care staff close to fully vaccinated

All staff at a Woy Woy aged care home have had their first vaccination.

BlueWave Living chief executive Mr Matt Downie said that more than 93 per cent of the staff at the home have also had their second dose "and that difference will soon disappear".

"Our resident vaccinations remain above 90 per cent for all residents.

"Some have elected (or their family) to not be vaccinated.

"It is however a condition of new admission that new residents must have had their Covid vaccination,

so again we expect to see that vaccination rate to improve.

"I would also like to flag to all family and friends, that when we do get to a point of re-opening more readily to visitors, it will almost certainly be a requirement that you must be fully vaccinated against Covid to enter our building.

"I know this is a concern some residents and staff have rightly raised, regarding people coming onto site who may not be vaccinated.

"I believe is a reasonable expectation given the risk to our elders in care that we expect anyone entering our building is

fully vaccinated, just as it has been a requirement for the past few years that visitors are vaccinated against influenza.

"I expect this will almost certainly be a directive from NSW Health when we are allowed to accept visitors again.

"Regardless, it is something we would look at very seriously.

"So I again encourage all those family and friends, that if you have not taken steps to become vaccinated, please consider doing so."

SOURCE:
Newsletter, 15 Sep 2021
Matt Downie, BlueWave Living

Umina medical practice closes after council rejects plans

The long-standing medical practice Family Medicine Umina Beach closed for consultations on September 17.

"The medical practice, formally Dr Ray Martin's, has been serving the Umina Beach community for over 36 years under different owners," said practice manager Ms Liz Ward.

"Dr Codrington has already left for maternity leave and Dr Jay Chelladurai will be having a well-earned break."

Patient information would

be sent to the newly-opened Providence Medical in West St, Umina Beach, if no prior request had been received, she said.

"Providence Medical will continue to provide health care for our patients."

She said Dr Jay Chelladurai was "very sad to be closing" but his future plans to build a new clinic had been rejected by the council, due to the lack of provision for parking.

This was despite the fact a council car park was close by and was used by other

medical practices, she said.

Dr Chelladurai had planned to expand and recruit extra doctors, which were greatly needed for Umina Beach, she said.

He had hoped for "a building providing modern medicine with traditional values".

The premises at 4 Berith St are expect now to be used by Yerin Aboriginal Health Services.

SOURCE:
Media release, 17 Sep 2021
Liz Ward, Family Medicine
Umina Beach

Criminal lawyers who will protect you.

Any traffic or criminal law matter can be stressful and daunting. If you or a loved one is facing criminal charges, Tonkin Drysdale Partners will ensure you have the best defence.

P (02) 4341 2355
E info@tdplegal.com.au
tdplegal.com.au

60+ YEARS OF EXPERIENCE

Forum

Put the cars where the space is

We, the local shoppers, all call it Woollies Car Park.

We all know that it is our last remaining "park" in town.

It can't be sold.

It is our last bit of an oasis.

People walk through, have their lunch or coffee break, feed the ducks and all that under the shade of the leafy tall trees.

Many residents already put their argument forward that the sale of the Austin Butler Reserve is unacceptable.

Why does the Council not see a better solution?

There are more parking spaces available at the nearby tennis club.

Their new and nicely surfaced



car park has dozens of car spaces, which most of the time is not fully occupied much at all.

Can't this tennis club car park be a solution to the problem?

We then can keep our trees, which keep us cool and happy.

SOURCE:

Email, 8 Sep 2021

Johanna Reygersberg, Woy Woy

Give scrutiny to plan's effect on watertable

What would you think if you went into your kitchen, turned on the tap, and nothing happened?

Initially I suppose, you'd think: "Ah, they must be working on the mains and I missed the notification."

Then, when you talked to the neighbours and found that they too had no water and no advance warning, you might start to worry slightly.

After all, we've grown accustomed to an uninterrupted and plentiful supply of "potable" water at an incredibly cheap price per litre.

It's our right isn't it? Why shouldn't this continue forever?

The people who are tasked with making sure that this scenario never happens here are, of course, at Central Coast Council.

I'm concerned that the council's Draft Water Supply Security Plan is not getting nearly enough scrutiny from Peninsula residents.

Do you know exactly where your water comes from?

If you don't, the council has produced a rather nifty animated presentation which will show you.

It's called Central Coast Water Supply System – Animation. It's on You Tube and was put up six months ago.

When I looked last week, there had only been 231 views.

There are other videos which help simplify and explain the Council's draft plan for water security. These have had even less views.

The draft plan and links to all of the You Tube videos and numerous fact sheets can be found at <https://www.yourvoiceourcoast.com/all-projects/planning-our-water-future>.

The Council asserts that the absolute cheapest, and therefore inevitable, option for supplying up to five megalitres of extra water per day in the event of a prolonged drought is groundwater via bores, mainly located at Woy Woy.

Most of the investigations regarding capacity, sustainability and effects on flora and fauna do not appear to have been carried out yet.

They are not published in the reports and are mentioned in the future tense.

If you are in any way concerned about the future of the water table on the Peninsula, take a look at the Council's draft plan.

If you don't and the taps stop working, the main person to be angry with will be yourself.

SOURCE:

Email, 17 Sep 2021

Francis Wiffen, Woy Woy

Not so enthused about direct democracy

I believe in democracy but I'm not quite so enthused about direct democracy.

Some people might think that national foreign policy should be set by street communes, but my view is that each level of government has a sphere of responsibilities and has to exercise powers commensurate with those responsibilities.

Norm Harris's complaint that some kind of popularity contest held 17 years ago should have been the final word on municipal boundaries is absurd ("Problem exists when poll results in contrary actions", PN 527).

The question that was asked was meaningless, and the voting result was exactly what one would expect from such an open-ended query.

Suppose that the question had been, "Do you want to keep the present incompetent and unresponsive Gosford Council, or amalgamate with Wyong into a well-run Central Coast City?"

I'd suggest the result could have been quite different, as anyone who designs questionnaires knows.

Obviously, there are some things on which a plebiscite is a reasonable action, e.g., it would be

quite appropriate to ask ratepayers to vote on whether funds should be spent on drainage works or on a regional library, and, then, there are arguable issues, such as how many councillors and how many wards we should have.

However, there are some matters on which a long-term, broad view has to take precedence over parochial interests, and it might be that amalgamation is one of those.

The fact that the ratepayer-elected councillors made a complete botch-up of the process says nothing about the correctness of the original decision: you get the government you deserve, and Central Coast got the council it deserved.

As for a question about the number of storeys that a building in Gosford should be allowed to reach, I cannot imagine a more idiotic proposition.

The vast majority of people would have no idea of what the question means, and I could guarantee soliciting half a dozen different answers, depending on how the question is worded.

For instance, "Would you like to live crowded into a lot of ugly little one-storey buildings,

or in a beautiful high-rise with views of the lake and surrounded by landscaped grounds for recreation?" and "Do you think the centre of Gosford should look like the centre of Surry Hills?" would produce very different responses.

This is apart from the fact that most residents of Central Coast have no "standing" in the issue.

They don't live in Gosford, won't ever live in Gosford and, probably, never go to Gosford, so what is their opinion worth?

The only people who matter are the ones who will live in Gosford, so, if we are going to have a customer-satisfaction survey, let it be of the appropriate population cohort.

A classic example is the Bullion Street carpark.

There was furious opposition to the redevelopment of the site from people with no idea of what was proposed - just a negative, knee-jerk response to any kind of change that might have brought about an enormous improvement to the area.

There are times when good judgement has to overrule entrenched prejudice.

SOURCE:

Email, 14 Sep 2021

Bruce Hyland, Woy Woy

Premier should read 1995 EPA report

Will the Premier act on climate change?

As the Premier of NSW charges ahead to reboot the economy post pandemic, it is appropriate to enquire if she will tackle climate change with the same fervour and resources.

In a recent ruling in the Land and Environment Court, the chief judge ordered the EPA "to develop environmental quality objectives, guidelines and policies to ensure environment protection from climate change".

As the Premier will not be attending the daily ritual of updating the media on the latest pandemic data, she will have the time to personally supervise the EPA's resources to adhere to the chief judge's ruling.

I recommend the Premier reads the EPA's summary report "Regional Impact of the Greenhouse Effect on NSW" published in 1995, and act on the advice that has been ignored for 26 years.

Climate change action is a big ticket item for voters, who may have alternate options at elections with an increase in candidate nominations interested in environmental problems and problem solving.

The habitude of elected representatives is increasingly questioned as electors look to their futures.

Ettalong's heat island effect is solvable but not with existing attitudes to development.

The aged care development in Hillview St looks like an aged care fortress, with the only significant feature the remaining endangered ecological community, in danger of extinction.

SOURCE:

Letter, 13 Sep 2021

Norm Harris, Umina

Public Notices

Car Boot Sale
Woy Woy Peninsula Lions Club

SEP 26

CANCELLED

**due to current
coronavirus
health concerns**

Enq: 0478 959 895
COVID SAFE

Peninsula News
Community Access

offers

**Classified
advertising
at affordable
rates**

Contact us for details:
4243 5333
advertising@peninsula.news

It is with great sadness that Dr Chelladurai is announcing the

Closure of Family Medicine Umina Beach

Dr Codrington has finished her time here and Dr Jay Chelladurai's last consulting day was the 17th September 2021. Practice records are being transferred to Providence Medical, West St Umina Beach.

The planned COVID vaccination appointments will still be going ahead at your allotted time.

Dr Jay and the team would like to thank you for your support over the years and understanding.

CWA branch calls for action on affordable housing

Umina Beach branch of the Country Women's Association is calling for action on social and affordable housing in rural and regional NSW as part of a state-wide awareness campaign undertaken by the Association.

The campaign has an emphasis on women over 55, the fastest growing cohort of homeless people in Australia.

Branch president Ms Rikki McIntosh will be having a sleep-out this week at her home to raise money for homeless women.

The funds raised will go towards buying swags for Mary Macs to donate to those in need.

Ms McIntosh, pictured in her swag, is asking for donations to support the campaign.

Through its Awareness Week, the Association was supporting recommendations from a raft of community housing providers for greater funding.

Ms McIntosh said the housing providers were wanting a dedicated fund for the provision of social housing properties, greater investment in a comprehensive maintenance program across existing social housing properties,



and more consideration of the need in rural and regional NSW.

They have asked for new strategies and reforms that could improve overall housing affordability across the state, and superannuation reforms and improvements to the rental assistance scheme that would assist low-income earners, particularly financially-vulnerable older women.

"We support community housing providers who are pleading for more to be done to help the state's most vulnerable citizens," said Ms McIntosh.

"We acknowledge governments at all levels are committing resources towards social and affordable housing, but it is not keeping pace with the current

demand, and the demand expected in the future.

"Housing affordability is an issue of real urgency for communities right across NSW.

Covid-19 restrictions have actually prompted many people in our large cities to look to the regions for a change of lifestyle, which has had the effect of pushing up housing prices in these areas and impacting locals who are either looking to get into the housing market, or looking for somewhere to rent," Ms McIntosh said.

Donations for Ms McIntosh's sleep-out can be arranged by emailing cwaofnswuminabeach@gmail.com.

SOURCE:

Media release, 15 Sep 2021
Margaret Key, CWA Umina Beach

Post office support promised with bank branch closure

The third bank to close its Woy Woy branch in the space of 12 months is relying on the post office to provide local face-to-face service to its customers.

The National Australia Bank will close its Woy Woy branch on October 14.

This follows the ANZ's Woy Woy branch closure a year ago, and the closure of the Newcastle Permanent branch in March.

NAB retail customer executive Mr Jamie Apostolovski said: "While our physical branch presence in Woy Woy will no longer be there, we will still be there for our customers – just in different ways.

"These include our partnership with Australia Post and the Bank@post service as well as connecting with our mobile bankers, home lending specialists or business bankers in person or for phone or video appointments.

"The branch team will be working with customers over the coming weeks until we close, talking with them about the various banking alternatives available.

"Importantly, there will be no job losses.

"Over the coming weeks we will be working with our colleagues from this branch on opportunities

for them to continue to support customers either through other branches or across phone and digital channels."

Mr Apostolovski said that the branch closure came as "increasingly customers are banking digitally, with more than 93 per cent of customer interactions now taking place over the phone, by video or online".

"Over the past few years, fewer customers are coming into branches to do their banking and foot traffic has lessened, which has been accelerated by Covid.

"More than 50 per cent of our customers in Woy Woy have only visited the branch once in the last year and almost 70 per cent of customers are also using other branches in the area such as Gosford and Erina."

Personal banking executive Ms Rachel Slade said customers would be able to access an expanded range of services at Australia Post, introduced progressively from 1 October.

"We know that face-to-face banking will always be an important part of banking and this will help us achieve that," Ms Slade said.

SOURCE:

Media statement, 16 Sep 2021
Peter Dalton, NAB



Liesl Tesch MP
Member for Gosford

How can I help?

Schools and education

Community Recognition Awards

Anniversary & birthday messages

Fair Trading

Hospitals and health

Main roads

Police and Emergency Services

Public housing

Trains and public transport



📍 20 Blackwall Road, Woy Woy NSW 2256

@ Gosford@parliament.nsw.gov.au

☎ (02) 4342 4122

Student executive applications now open

Applications for the 2022 Student Executive at Woy Woy South Public School are now open.

Applications are open to students in Year 5.

They can be made online or on paper.

Parents have been asked to contact their child's teacher for more information, including the new application process and the online form.

Applications will close on Friday of Week 4 in Term 4.

SOURCE:
Social media, 14 Sep 2021
Matt Barr, Woy Woy South Public School

Bays art show rescheduled

The Bays Community Group has rescheduled its Art Show and Exhibition to February.

"Despite hanging on in hope, it has become apparent that we are not going to be able to hold our Art Show and Exhibition in October," said group president Ms Gwynneth Weir.

"As the number of people who have been double-vaxed rises every day, I am sure we are all hopeful that before too long we will be able to enjoy a life that is much closer to normal.

"Therefore we have decided to move this event to February next year.

"We sincerely hope that, by then, those of us who are double-vaxed will have much more freedom and we will be able to hold our event at that time."

Ms Weir said: "Not a single person asked for a refund of their ticket price or artist's fee when we had to postpone last time and this

continued support of The Bays was very much appreciated."

She said that people should retain their tickets as any tickets bought for the opening night will be valid for the new date.

"Any artists who have booked space will retain their booked space for the February event."

However, refunds were still available.

"Anyone who wishes to receive a refund for their ticket or artist's space should send an email to thebaysemail@gmail.com so that we can arrange a refund.

"Refunds will also be available if the new date does not suit when it is confirmed.

"Let's all hope that the New Year brings better times and we look forward to our Art Show and Exhibition in February."

SOURCE:
Media release, 12 Sep 2021
Gwynneth Weir, The Bays Community Group



Photos of banksia grove wanted

The Grow Urban Shade Trees group is seeking old photos of the "lovely grove of banksia integrifolia trees next to the Ettalong Ferry terminal" in Ferry Rd.

The group is asking Central Coast Council to do some succession planting and "minor

protection efforts".

"Does anyone have any old photos featuring this?" group member Ms Melissa Chandler asked.

"They are a local asset and deserve protection."

SOURCE:
Social media, 16 Sep 2021
Melissa Chandler, GUST

Bridge club holds online trials

The Brisbane Water Bridge Club has started playing bridge online, while the lockdown prevents games in person.

It held its first trial last Monday. A second trial of RealBridge will be held today, Monday, September 20, from 9.30 am

Club members will be able to become familiar with the RealBridge experience, playing 20 boards online at no charge.

With enquiries, call Peter on 0416 138 698.

Results of the first RealBridge trial played on September 13 were:

1. Noel Crockett - Shirley Crockett 161.0 (67.08 per cent).
2. David Snow - Martin Johnson 139.0 (57.92).
3. Elaine Hume - Peter Hume 137.0 (57.08).
3. Tony Sappideen - Tony Giles 137.0 (57.08).
5. Alison Mackey - Dianne March 133.0 (55.42).
6. Jo Ampherlaw - Linda Cunningham 131.0 (54.58).
7. Beryl Lowry - John Aldersley 128.0 (53.33).
8. David Howells - Sue Eastman 120.0 (50.00).
8. Helve Beale - Roz Harvey 120.0 (50.00).
10. Megan Raadsma - Kai Kaasik 111.0 (46.25).
11. Jennifer Voorwalt - Maria Gabr Molner 104.0 (43.33).
12. Jennifer Anderson - Marielle Foster 89.0 (37.08).
13. Denyse Stephens - Suzanne Harrison 87.0 (36.25).
14. Carolynne Mucharsky - Graham Woof 83.0 (34.58).

SOURCE:
Website, 16 Sep 2021
Brisbane Water Bridge Club

Walkers raise \$15,000 for Pearl Beach hall

More than 60 walkers have raised more than \$15,000 for the Pearl Beach Memorial Hall through the Pearl Beach Challenge five kilometre community walk held over the weekend of September 3 to 6.

"The Pearl Beach Challenge Walk was a sponsored walk on a set course around the streets of Pearl Beach," said Pearl Beach Progress Association publicity officer Ms Lynne Lillico.

"It was designed for individuals and specialist groups to promote heart ailments, orthopaedics, cancer, or simply good health during these difficult times of Covid lock downs.

"Seven teams, totalling more than 60 participants, registered to walk the course.

"The participants were walking for their health and the financial viability of the Pearl Beach Community Memorial Hall.

"The total amount raised will exceed \$15,500, and is a compliment to the participants for attracting such great individual sponsorship."

Ms Lillico said of special note were the event "ambassadors" - Ms Bev Lapacek who raised \$3300 and Mr Taras Mencinsky who ran the course 20 times for a total distance of 100km.

She said Ms Lapacek became involved after having heart disease symptoms.

She reported Ms Lapacek saying: "Last year I started having symptoms indicative of heart disease, namely an ache down my left chest and arm and sought medical advice.

"A stent was inserted and I thought that would fix things however, five months later, I learnt

that other vessels were blocking and in late April underwent a triple bypass.

"I am still undergoing a cardiac rehabilitation program and walking longer distances each week.

"My cardiothoracic surgeon committed to sponsoring me."

Ms Lapacek walked with other heart surgery friends Mr Duncan Bridell and Ms Carolyn Marks as the Heart Beats Team, all having the same surgeon.

Ms Lillico said Mr Mencinsky had a different story.

She said he had told her: "I have run all my life but only started running longer distances once my children were getting older and I was in my late 30s.

"I started with marathons and then progressed to trail marathons and ultra-marathons.

"That's why I love living in Pearl Beach.

"The Brisbane Water National Park is on our doorstep, and I can run literally for a 100 kilometres or more just exploring the many tracks and fire trails within and surrounds.

"The Memorial Hall in Pearl Beach is a meeting place for the residents.

"It brings us together and reminds us of the generations past that we have to thank for what we enjoy now and it is our responsibility to ensure it is here for future generations."

Ms Lillico said event sponsors included Coast Realty, Personal Eyes and Healthcare.

Pictured are the Heart Beats team of Mr Duncan Bridel, Ms Carolyn Marks and Ms Bev Lapacek

SOURCE:
Media release, 9 Sep 2021
Lynne Lillico, Pearl Beach Progress Association