



Coronavirus fragments detected in sewage at Woy Woy

Fragments of the coronavirus were detected in untreated sewage at Woy Woy treatment plant on Tuesday, August 3.

The detection suggests the virus could be currently infectious in the community, according to Central Coast health district public health director Dr Kathryn Taylor.

No case had been identified on the Peninsula by NSW Health as of 2:30pm yesterday, Sunday, August 8.

"Anyone living or working in the area is urged to be particularly vigilant for any symptoms of Covid-19," she said.

"If even the mildest of symptoms appear, please get tested immediately and isolate until a negative result is received.

"High rates of testing are critical to detect transmission and prevent further spread of Covid-19 in the community."

According to the NSW Health department website: "An infected person can shed virus in their faeces even if they do not have any symptoms, and shedding can continue for several weeks after they are no longer infectious."

"Testing sewage can help track infections in the community and provide early warning of an increase in infections."

The most recent cases on the Peninsula were reported in the 2256 postcode area on August 31 last year and in the 2257 postcode area on December 29.

The treatment plant serves Woy Woy, Ettalong Beach and

Umina Beach, as well as Woy Woy Bay, Phegans Bay, Horsfield Bay, Blackwall, Booker Bay, Pearl Beach and Patonga.

The NSW Health Department estimates 41,300 people live in the area.

Testing is available in Woy Woy at Shop 7 The Pavilion in George St from 8am to noon Monday to Friday and at the Sea Scouts Hall in Burge Rd from 9am to 4:30pm Monday to Friday.

Drive-through testing is available at Koolewong from 7:30am to 3:30pm Monday to Friday.

Testing is available at Gosford Hospital 9am to 5pm seven days a week.

SOURCE:
Media release, 5 Aug 2021
Kathryn Taylor, CCLHD

There may not be many people on the Woy Woy waterfront at present, but the fish and chip shop still has a crowd.

Pelicans are making the most of the absence of people to congregate outside Woy Woy

Fishermen's Wharf.

While not very good at social distancing, the pelicans can be used as a guide.

"Please remember to stay two pelicans apart."

SOURCE:
Social media, 28 Jul 2021
Woy Woy Fishermen's Wharf

Supporting the Peninsula community
Only Peninsula advertising
Only Peninsula news

All the news that didn't fit in print

For each issue of Peninsula News, we have more news items about the Peninsula than we have space to print.

These items are normally included in Peninsula News EXTRA, which is an electronic supplement to printed edition.

Due to the lockdown, there are not enough items to produce a supplement this time, but they will be included on the website.

Please keep an eye out for the next issue of Peninsula News EXTRA due out on August 26.

Volunteer opportunities are available in all aspects of the newspaper's production, from news gathering and photography, through to seeking advertising and administration.

Offers of assistance are always welcome.

SOURCE:
Mark Snell, 8 Aug 2021



Peninsula News EXTRA
Be notified. SCAN here.



Next issue: Monday, August 23

Email: contributions@peninsula.news

Aged care vaccination hub opens Friday

A vaccination hub for aged care workers is to be opened on the Peninsula, possibly as soon as Friday.

The hub will be staffed by NSW Health and will help aged care workers become vaccinated by the September 17 deadline.

It is to be set up in the disused Jack Aldous House at Peninsula Village.

Peninsula Villages chief executive Mr Fred van Steel said the aged care home would make its Umina Beach facility available as a vaccination hub which will deliver much-needed Covid-19 vaccines to Central Coast aged care workers.

Jack Aldous House closed last year to make way for the newly-opened Pozieres House.

"The clinical nature of the

facility, as well as its separation from the rest of Peninsula Villages' facilities, made this an ideal choice of location for NSW Health," Mr van Steel said.

"Aged care workers will be able to access the hub via a separate carpark.

"There will be no crossover between those attending the vaccination centre and other Peninsula Villages facilities.

"It will be staffed by NSW Health contracted workers.

"Peninsula Village staff will remain separate from the clinic at all times.

"The move comes as vaccines have become mandatory for all aged care staff, meaning all must become vaccinated by September 17."

Mr Van Steel said: "At present,

care staff are struggling to access vaccinations in existing hubs, and there are concerns many may run out of time to be able to access their job before the deadline.

"As the largest aged care provider on the Coast, it's our duty to ensure that as many staff can be vaccinated as possible.

"We know from our own experience that staff want to do the right thing, but many are spending hours, after long shifts, queuing at vaccination centres, or having appointments cancelled due to lack of availability.

"We want to be able to assist all aged care staff on the Coast to access a vaccine so they can continue to do their jobs."

SOURCE:
Media release, 6 Aug 2021
Emily Miller, Brilliant Logic

Peninsula News

Community Access

Peninsula News is a fortnightly community newspaper for the Woy Woy Peninsula, owned by The Peninsula's Own News Service Inc, a local non-profit incorporated association. Its aims include providing a viable, non-partisan news medium and forum exclusively for the Peninsula and developing a strong sense of community on the Peninsula.

Editor: Mark Snell
editor@peninsula.news
Advertising: Frank Wiffen
advertising@peninsula.news

NEXT EDITION: Peninsula News 526
Deadline: Thursday, August 19
Publication date: Monday, August 23

CONTACT DETAILS
NEWS: contributions@peninsula.news
ADVERTISING: advertising@peninsula.news
PHONE: 4342 5333 - Please leave a message
POSTAL ADDRESS: PO Box 585, Woy Woy NSW 2256

Please note: Peninsula News currently has no paid employees, and it may take a little time for us to get back to you. Our volunteers usually have other jobs and commitments, which compete for their time.

EMAIL ISSUES?
When emailing us, you will note that the domain name is PENINSULA.NEWS only. There is no .com or .com.au. If your email bounces or does not appear to have reached us, please check the address and try again. If this still does not work, try our old fallback address or call us by phone and leave a message.

Fallback email address: editor@peninsulanews.asn.au

Editorial policy and guidelines

At its heart, Peninsula News is a community effort.

It welcomes and relies on the contributions provided voluntarily and at no cost by local organisations, groups and residents.

The newspaper aims to be accessible to the community - both through making its columns accessible to community groups and by having copies available in accessible locations, including through its website.

The following policies and guidelines are designed to support the aims and standards of the newspaper.

Locality

The newspaper's editorial policy reflects a desire to reinforce the Peninsula's sense of community.

To qualify for publication, articles must have specific relevance to the Peninsula. For example, they must be about activities or events happening on the Peninsula or be organised by or involving Peninsula people.

The newspaper is not regional or national in nature, so regional or national issues will not be canvassed except as they affect the Peninsula.

Regional sports will only be covered from the perspective of Peninsula clubs. Regional plans will only be aired in the context of their ramifications for the Peninsula.

Peninsula News aims to be inclusive of as much of the Peninsula community as possible.

Readability

To ensure that the newspaper serves its purpose, it must be readable and represent the interests and activities of the community in its content.

Contributions to the paper are edited to consistent standards of readability. Guidelines are available for intending contributors.

All items will be dated. They must contain the name of the author to whom the contribution may be attributed, with their first name spelt out, along with their suburb or organisation. Anonymous contributions will not be accepted.

Forum letters

The Forum section provides the opportunity for readers to express their views on any aspect of Peninsula community life, with the aim of reflecting the community's diversity of opinion.

Nevertheless, letters may be edited for readability, including for length, spelling and grammar, and to avoid legal liability on the part of the newspaper, or they may be declined altogether.

Contributors are asked to keep their

contributions to the matter at hand, and to focus on the issues and not abuse or insult others.

Other than in the case of holding public figures to account, criticism of others (as opposed to criticism of particular opinions) is unlikely to be published in the interests of facilitating the expression of a diversity of views.

All letter writers need to supply name, address and contact details. Only name and suburb will be published.

Contributors who do not wish the wording of their letter to be changed at all should make a note to this effect when submitting their letter. In some cases, this may result in the letter not being published.

Corrections

We try to be as accurate as possible. However, mistakes can still slip through.

If you believe we have got something wrong, whether an error of fact or interpretation, we ask that you write to us by email with details for publication. These corrections may appear as Forum letters or as news items and should conform to our requirements for news and Forum contributions.

Source lines

Peninsula News includes "source lines" at the end of each article which aim to provide readers with information about where and how we came across the information, so that they might judge for themselves the veracity of what they are reading.

It should not be assumed that the article is a verbatim reproduction of the source. Similarly, it should not be assumed that any reporter listed is necessarily responsible for writing the whole news item. Source lines are not by-lines.

Often articles come from a number of sources. They are edited for readability and reader interest and given different headings, and consequently can be expressed quite differently from the source material.

Peninsula News usually receives its information in three ways: It is sent to us by someone wanting to promote their activities; it is sent to us in response to our inquiries; or it comes from a newsletter or other document to which we have access.

Sometimes we may interview a person or report what they said at a meeting.

The following descriptions are used:
Media Release - unsolicited contributions.
Media Statement - sent in response to our questions.
Website or Social Media - information published online.
Newsletter or Report - published in print or online.
Interview or Meeting - statements recorded by a reporter.

Forum contributions may be: **Email** if sent electronically and **Letter** if written on paper.

Rotary club donates \$38,000 in past year

The Rotary Club of Woy Woy has reported it made close to \$38,000 of donations in the last financial year.

Rotary projects and programs received about \$18,000, community projects more than \$17,000 and another \$3000 went to youth projects.

The Rotary programs and projects were: Australian Rotary Health \$11,200, RAWCS - Pure Joy project \$2190, Rotary - End Trachoma \$1329.40, Rotary

Foundation - International \$1000, Rotary Foundation Trust - Centurions \$1000, Rotary R100 - Every Child A Future \$500, Rotary Foundation - Polio Plus \$500 and RABS Refugee Mental Health project \$300.

Community donations were: RCWW Community Grants 2021 \$5240, Central Coast Family Support Service \$4000, Music Therapy for Dementia project \$3500, Anzac Day Service 2022 \$2010.80, Umina Surf Lifesaving

Club \$1000, RCWW Community Service Awards \$687, Blackwall Girl Guides \$500, Global Kids' Clothes 300 and Rotary 100 years Plaque \$138.40.

Donations to youth programs were: Police Citizens Youth Club \$2018, Good Start Project (BWSC backpacks) \$473, RYPEN Virtual Summer Camp \$450 and MUNA Central Coast \$250.

SOURCE:
Newsletter, 20 Jul 2021
Julie Jones, Rotary Woy Woy

Lions club cancels car boot sale

Woy Woy Peninsula Lions Club has cancelled its car boot sale and barbecue on August 29.

The cancellation is due to the current coronavirus restrictions.

The club normally holds its car boot sale and barbecue on the last Sunday of each month except December.

Stallholders set up from 6am.

The cost is \$20 per car space, which is collected by a club member during the day.

A mobile coffee truck serves coffee on site.

SOURCE:
Website, 6 Aug 2021
Greg Head, WWPLC



Mountain view of Ettalong

The crew from Fire and Rescue NSW Station 340 Umina based in Trafalgar Ave, Woy Woy, have taken this picture of Ettalong from Blackwall Mountain.

The crew was on "a quick trip up to Blackwall mountain to assist

NSW Ambulance and Brisbane Water Police District with a fallen mountain bike rider with minor injuries".

SOURCE:
Social media, 28 Jul 2021
Station 340 Umina, Fire and Rescue NSW

Ettalong seeks crossing supervisor

Ettalong Public School is seeking a part-time school crossing supervisor.

The role includes keeping students, parents and teachers safe on the road and being a second pair of eyes for our local motorists.

School crossings require 10 hours of supervising per fortnight.

Ettalong Public School shifts fall between 8.15am to 9.15am and 2.30pm to 3.30pm, Monday to Friday, during the school term.

Supervisors are expected to be reliable in good or bad weather.

They should have good

communication skills, a community spirit and positive energy.

Applications may be submitted at jobs.transport.nsw.gov.au, closing Wednesday, August 11.

SOURCE:
Newsletter, 3 Aug 2021
Jodie Campbell, Ettalong Public School

Dry July and arid August?

The Peninsula received less than half the average monthly rainfall during July, and August has also had a dry start.

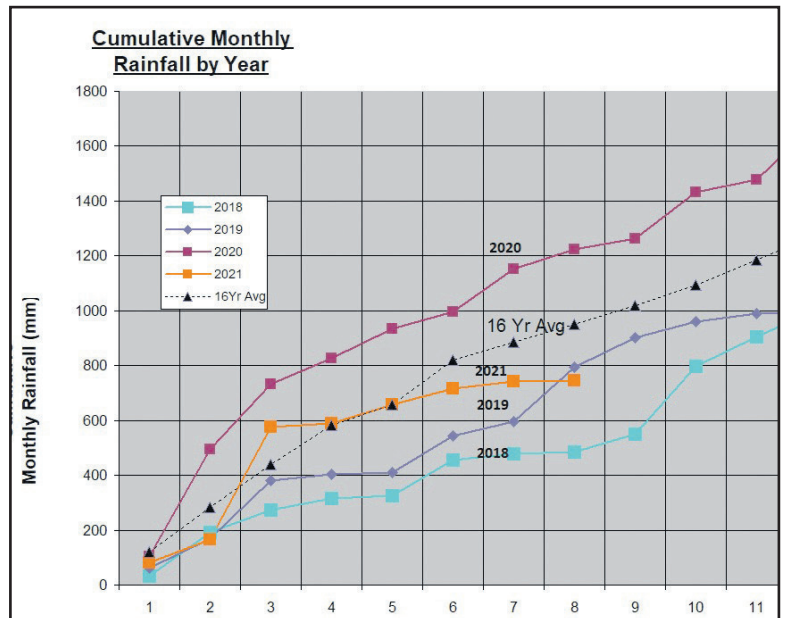
Just 1.3mm had fallen in the first week of August, according to figures supplied by Mr Jim Morrison of Umina.

The July total was 26.7mm, 40 per cent of the monthly average of 66mm.

The August average is 67mm.

After a wet start to the year, which included rainfall of 410mm in March, total rainfall for the year at the end of July was 742.7mm, 16.1 per cent below the average for this time of year of 885mm.

SOURCE:
Spreadsheet, 6 Aug 2021
Jim Morrison, Umina





Ettalong is ‘under high-rise attack’, group claims

The Responsible Residents for Ettalong Development group has started a petition against foreshore rezoning, claiming the town is “under high-rise attack”.

The group has also called on residents to lodge objections to a resubmitted “non-compliant six-storey development” in Ocean View Rd.

“Ettalong Beach is under extreme pressure from high density, high-rise developments which will have a huge impact on local infrastructure, life style, and character of this seaside village,” said group convenor Mr Peter

Gillis.

“The artist’s impression of these high-rises is quite dramatic.

“They will have substantial and irreversible negative effects on the Peninsula area, and on a suburb which already has the second highest population density, and is the hottest suburb on the Central Coast.”

Mr Gillis said the “attack” included “the recent application by Central Coast Council to increase the height of foreshore properties, the imminent building of 52 units on the Centrelink site, and the re-submission of a non-compliant six storey development”.

“The Council recently undertook

to apply to State Planning for an increase in the zone height, and floor-space-ratio, for a set of properties adjacent to the newly completed Atlantis building.

“This foreshore land on The Esplanade has a zone height of 11.5 metres (three storeys), and is the subject of a proposal for a 17 metre five-storey shop-top housing development by an unknown applicant.

“The seven-storey Atlantis building now shades the foreshore bushland for most of the winter day, and the addition of another high-rise on 3,200 square metres of land beside it could spell disaster for the Ettalong foreshore.

“There have been two major beach erosion issues here in the last few years, and this land is just 19 metres from the eroding foreshore sand.”

Mr Gillis said two other developments could have a major impact on local infrastructure, and “the already poor traffic and parking facilities will be stretched to the limit”.

A block of 52 units is under construction on the old Centrelink site.

The Local Planning Panel recently rejected a six-storey proposal for Ocean View Rd (DA57779) and the applicant has submitted a challenge to this

decision, according to Mr Gillis.

“The applicant has returned with the proposal unchanged, citing legal precedents and excusing the non-compliance.”

Mr Gillis said residents were urged to object to DA57779 at <https://search.s.centralcoast.nsw.gov.au/forms/php/eforms.php?form=100&da=011.2019.00057779.001>.

The change.org petition to stop the spot re-zoning of foreshore land could be found at <https://www.change.org/p/rob-stokes-mp-reject-council-height-rise-proposal-for-ettalong-foreshore>.

SOURCE:
Media release, 6 Aug 2021
Peter Gillis, RRED

Workers asked to check worker’s comp payments

Peninsula workers are being encouraged to check past workplace injury payments.

Around 1500 Peninsula residents are expected to receive a letter encouraging them to get past workplace injury payments checked.

Areassessment of the payments is being undertaken by iCare, formerly WorkCover NSW, which manages workers compensation in NSW.

“It’s important that we spread the word to ensure workers who were previously injured get paid correctly,” said consultant Mr Tom Scambler.

“If you or someone you know

has sustained a workplace injury between October 2012 and October 2019, please get in contact.”

Across the state, about 280,000 workers who suffered a workplace injury are being contacted.

“Identified workers will receive a letter from iCare outlining the reassessment process for a review.

“A review of historic payments has indicated earnings information used to determine weekly compensation payments was in some cases not provided to the insurer at the time.”

SOURCE:
Email, 28 Jul 2021
Tom Scambler, Porter Novelli Aus

Rotary club offers free grocery delivery service

Rotary Brisbane Water is offering a free grocery store pick up and delivery service during the lockdown for Peninsula residents who are seniors or immunocompromised.

“Our team of volunteers will take your grocery order, shop for you and deliver your groceries to your door,” said club president Ms Cherie Simpson.

“Payment of cash can be

accepted without contact.

“Simply leave it in a ziplock bag.


“We ask that maximum orders not exceed \$200.”

Pictured is club vice-president Ms Jayne Mote on a delivery run.

To arrange a grocery delivery, email the club at brisbanewater.rotary@gmail.com or phone 0405 714 289.

SOURCE:
Newsletter, 5 Aug 2021
Cherie Simpson, Rotary
Brisbane Water





ACCOM
PROPERTY

The trusted name in PROPERTY MANAGEMENT for
HOLIDAYS + SALES + RENTALS



Ettalong office: 02 4344 6152 - www.ettalong.accomholidays.com

Kilcare, Daley’s Pt, Ettalong, Umina and Pearl Beach, Patonga and Woy Woy



Applicant challenges planning panel rejection

The applicant for a six-storey development at 237 Ocean View Rd, Ettalong, has challenged the rejection of his application by the Local Planning Panel.

"The rejection was based on major non-compliance issues, including the five storey zoning, 'poor amenity for future residents and visitors', 'adverse impacts on the neighbouring low density residential properties', and that the proposal was 'not in the public interest'," according residents' group convenor Mr Peter Gillis..

"The Council's original advice to this developer was 'the height of the building is to be reduced to five storeys with the height of the building reduced to two storeys at the residential zone interface'.

"The developer subsequently submitted another larger proposal of six storeys (DA57779), which the Council planning department then supported."

Mr Gillis said the Responsible Residents for Ettalong Development group was encouraged when this was

rejected by the Central Coast Local Planning Panel.

He said the applicant had returned, with the proposal unchanged, citing legal precedents and excusing the non-compliance.

"The developer states that the proposal is 'consistent with the desired future character of the Ettalong Beach area'.

"We believe that the future character of our Ettalong Beach area must remain as it is, a seaside low-rise village.

"We think the Ettalong Beach community should formally object to this DA on the grounds that the proposed building is not in character with other Ettalong Beach buildings.

"The size and height of the building are excessive and non-compliant.

"The building would create shading issues for the adjacent areas and the street.

"It's next to a residential area to the north, and would seriously impact their privacy.

"It would create major traffic issues from 26 new dwellings built next to the already approved

Centrelink building of 52 units (DA49986)."

Mr Gillis said: "The proposed height is still 19.41 metres above ground level, and six storeys.

"The current zone limit is 17 metres and five storeys.

"This proposal has a setback of just 7.8 metres from the north boundary R1 zone, and doesn't meet other setback requirements on three sides.

"The street facade is required to be stepped back by three metres. This proposal shows no street setback.

"The levels above the front two storeys should be tiered back at an angle of 45 degrees.

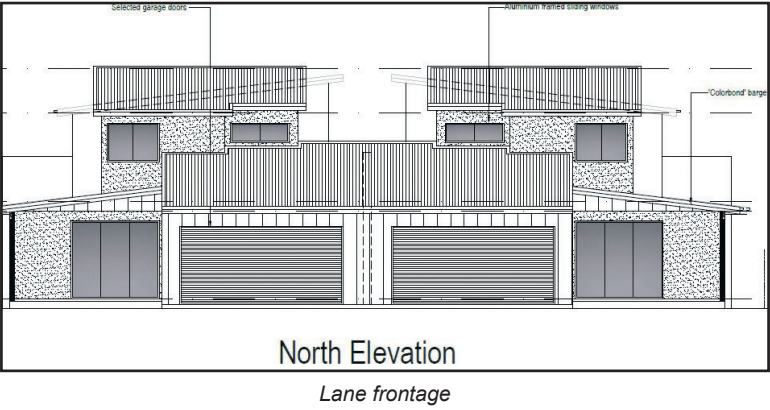
"This hasn't been done. The facade is five storeys."

Mr Gillis said the increased traffic and visitor parking would be "chaotic".

"The traffic survey was based on old data and a minimal survey.

"It did not take into account new local developments.

SOURCE:
Media release, 6 Aug 2021
Peter Gillis, RRED



Application for four units in Karingi St

Central Coast Council has received an application for a four-unit multi-dwelling development estimated to cost \$900,000 at 13 and 15 Karingi St, Ettalong.

Submitted by Knight Mapleton Design Partners, the application seeks consent for the demolition of the existing dwellings and the erection of four units.

"The flat 1040.5m2 site is 24.38 metres in width, 42.67 metres in length and obtains direct vehicular access to the public road reserve.

"The site contains single dwelling-houses and ancillary structures.

"The surrounding residential development to the west being characterised by primarily medium density housing and an eclectic blend of one and two

storey dwelling-houses, ranging from modest, post-war design to dwelling-houses of a contemporary appearance."

Vehicular access is proposed via central driveway to separate garages for units 1 and 3 and rear lane access for unit 2 and 4.

The proposal does not comply with setback requirements, having a side setback of one metre instead of the required 3.5 metres.

It has a rear setback of 1.2 metres, instead of the required six metres.

At 35.44 metres, it exceeds the maximum depth of a building and has three sections of external wall longer than the maximum of eight metres.

The application is open for public comment until September 3.

SOURCE:
DA Tracker, 4 Aug 2021
DA62513, Central Coast Council

Architectural review suggests changes for rejected plan

An architectural review of the design of a building rejected by the Local Planning Panel earlier this year has suggested changes should be made to the building's design.

The review of the proposal for a six-storey mixed-use development at 227-231 Ocean View Rd, Ettalong, was conducted by architect Mr Ken Dyer of Dyer Design Company, Umina.

The review concluded: "The western facade facing the village centre, needs further resolution to reduce the impact of the perceived scale and bulk specially to address the building height variation sought.

"The proposal has requested a variation exceeding the height limits, although this would appear minor in the context of a numerical value only, it is exacerbated by the non-compliances in the boundary

setback and building separation variation."

Mr Dyer suggested the western facade towards the village centre could be reduced in bulk and scale to be treated like the south-east corner and street facade which "are articulated to appear more like a four storey building".

"Has the applicant explored an additional half basement of carparking, freeing up the ground floor for an additional unit and deleting the penthouse level – thus ensuring the building could be contained within the building height limits?"

My Dyer also suggested: "The building line of commercial tenancy should be setback to allow for an activation zone – outdoor dining etc.

"The bedroom to Unit 106 mezzanine protruding into set back zone should be deleted and remain void areas per unit 107, so those intrusions remain as transparent

as possible."

He questioned the question the orientation of the pop-out windows to the rear of the site.

"This encourages overlooking (especially at high level) of the private back yards of the adjoining residential area.

"I would suggest these are orientated to the front of the site to the long distant views."

Mr Dyer said many of the bedrooms were not of the required minimum size and a number of the living rooms were less than the minimum width.

A number of the units did not comply with ceiling height requirements.

My Dyer said he could not see how this could be addressed without further affecting the building height variation.

SOURCE:
DA Tracker, 6 Aug 2021
DA55896, Central Coast Council

Certificate issued for Centrelink site

A construction certificate has been issued for a five-storey mixed-use development on the old Centrelink site in Ettalong, allowing building work to start.

The development will consist of 52 residential units as shop-

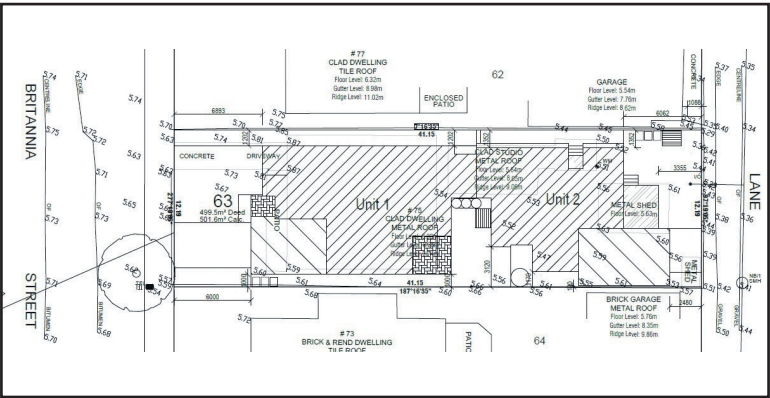
top housing on levels one to four, basement car parking and six commercial premises at ground level at 237-245 Ocean View Rd, Ettalong.

It also includes construction of a swimming pool, landscaping and related site works at an estimated

total cost of \$11.126 million.

The construction certificate was issued on July 16 by private certifier Metropolitan Building Approval.

SOURCE:
DA Tracker, 6 Aug 2021
DA49986, Central Coast Council



Dual occupancy proposal features rear lane access

An application has been lodged with Central Coast Council for a dual occupancy development costing \$450,000 at 75 Britannia St, Umina, with rear lane access for the second unit.

"The single storey dwellings would incorporate concrete slab foundations with brick veneer cladding, powder coated aluminum windows and colorbond roof sheeting," according to the application submitted by Clarke Dowdle and Associates.

"Each dwelling would include a garages, bedrooms, a living room, kitchen, dining area, bathroom, ensuite and adjoining patios-courtyards.

"The development would obtain access to their garages from the

Britannia St and from the rear laneway."

With a lot size of 501.4 square metres, the proposal does not comply with the planning provision requirement of 550 square metres.

With a rear setback of 2.8 metres, the proposal does not comply with the minimum setback for dual occupancies of three metres.

It does not comply with maximum wall lengths of eight metres, on either the east or west sides.

Neither unit complies with private open space requirements.

Public submissions are being accepted until August 28.

SOURCE:
DA Tracker, 4 Aug 2021
DA62580, Central Coast Council

Objections to removal of mature waterfront paperbark

More than 20 documents have been recorded by Central Coast Council opposing the removal of a mature paperbark tree as part of a proposal to build a new house on a waterfront property at 45 Woy Woy Rd, Woy Woy.

The proposed development consists of a two-storey, five bedroom home, including lift, pool and double garage estimated to cost \$825,227.

Three trees are proposed to be removed that are close to the proposed building.

"The melaleuca tree proposed for removal in the application clearly does not, 'avoid

disturbing natural slopes and existing trees that provide visually-prominent backdrops

to waterways or surrounding

suburbs'," said one objector.

"This is particularly relevant considering an endemic tree is proposed to be removed.

"Nor does the design, 'provide deep soil areas sufficient to conserve existing trees or accommodate new landscaping', especially considering the tree is being removed.

"Nor does it 'improve the identity of the surrounding area', and it certainly isn't 'consistent with the existing and desired character of the Open Woodland Foreshore within the suburb of Woy Woy'.

"The melaleuca tree should be retained and any approval should require the tree to be retained and any new building designed to ensure the tree is retained and protected."

The Grow Urban Shade Trees group put out a last minute call

for submissions on the proposal before the comment period closed on July 29, saying: "Its up to all of us to keep pointing out the high-performance design features of a tree and to help others understand the value that one single item will bring to their property and to all the neighbouring properties, and wildlife."

The proposed development has a minimum setback to the northern boundary of 1.2m on the ground floor and 1.36m on the first floor.

The proposed minimum setback to the southern boundary is 0.9m on the ground floor and 1.36m on the first floor.

In her application, Ms Cathy Slater from Slater Architects said: "The design is stepped, well-articulated and generally fits within the building envelope.

"Therefore we are of the opinion



that the proposed development is consistent with the objectives and generally satisfies and exceeds the requirements of the development control plan."

SOURCE:
DA Tracker, 7 Aug 2021
DA62010, Central Coast Council
Social media, 28 Jul 2021
Melissa Chandler, GUST

Jazz in Arboretum

Plans are proceeding for Jazz in the Arboretum to be held on Saturday, October 23.

The Pearl Beach Progress Association and Crommelin Arboretum committee have agreed to proceed subject to changes in coronavirus restrictions.

Early bird tickets are on sale and clearly state conditions of purchase and refunds.

The Jazz Co-ordinating Group has circulated a sponsorship proposal document to a selection of businesses and residents.

The sponsorship would help cover the performers' fees and other expenses including toilet hire, professional sound system, publicity and printing costs.

Tickets are available on the pgress association's website and through Eventbrite.

SOURCE:
Website, 6 Aug 2021
Pearl Beach Progress Association

Ettalong Diggers Club has applied to Central Coast Council to replace the roof over its front entry set-down area at a cost of \$542,358.

The proposal is to replace the existing tensile shade sail over the "port cochere" set-down area with a metal roof and to re-tile the area to make safe the slippery tiles in this area.

"The roof will extend to provide cover to patrons who are waiting to board the club bus on the northern side of the port cochere," according to a development application submitted by EJE Architecture.

"The current porte cochere of the club is currently stained and has holes and patches.

"The tiles in this area are also slippery when wet and pose a risk to those entering the club."

The tensile sail structure would



be replaced with a flat metal roof with timber feature columns and beams "in a beach-style theme".

The tiles to the pedestrian areas would be replaced with slip resistant tiles.

The roof would be extended to cover the waiting area for the club bus.

A landscaped garden would be created beside the waiting area "to soften the harsh nature of the two-storey rendered brick wall facing north".

The proposed upgrade would be "fundamentally enhancing the local area".

"It is intended to enhance the

streetscape of The Esplanade and show activity to the street and provide a visual connection the natural surrounding context.

"The proposed new roof will be supported on galvanised steel structure with a roof sheeting of Colourbond SupaDura stainless steel.

"The steel structure will be clad in weather resistant hardwood.

"Ceilings will be in perforated fibre cement with an acoustic scrim backing, with colours to match the exterior of the Mantra.

"Lighting will be non-spill lighting, designed to light just the immediate area below and not to spill to the street or to neighbours."

The public comment period closed on August 3. No comments were received.

SOURCE:
DA Tracker, 6 Aug 2021
DA62136, Central Coast Council

New entry proposed for Ettalong Diggers

Dredging allocation 'reflects government responsibility'

The allocation of funds to dredge the Ettalong Channel represents the NSW Government's acceptance that "it is responsible for the troubled waterway", according to Member for Gosford Ms Liesl Tesch.

Despite the fact that the government announcement did not specify how much money would be spent on the Ettalong Channel or when, Ms Tesch said she had received a written confirmation from Transport Minister Mr Andrew Constance that Ettalong Channel dredging would be "fully-funded".

Ms Tesch said that concern had remained about whether the

reclassification of the waterway in 2019 and a Government announcement in March this year actually meant full-funding for dredging.

She said Peninsula Waterways Committee chair Mr Mike Allsop had told her the Government had previously avoided acknowledging its responsibility for the full cost of dredging by falling back on the excuse that the "Brisbane Water is full of private jetties and marinas".

Ms Tesch said she wrote to the Minister in April to ensure the announcement meant full-funding for the Ettalong Channel.

"In April I wrote on behalf of the community to the Minister to clarify how much funding would be

allocated as part of the identification of the Ettalong Channel as a 'key investment location'."

"I was delighted by the confirmation that full-funding was finally secured."

"Our community has fought hard for this recognition and funding from the NSW Liberal Government, and I am so pleased that the Peninsula won't be left high and dry anymore."

"The closure of our ferry service caused by a lack of dredging by the NSW Government hurt our locals, with many unable to see their family and friends, while others were prevented from going to work or school.

"Our local tourism also took a

hit with businesses experiencing a huge reduction in visitors, and some closing due to the financial losses."

Ms Tesch said that in 2018 Central Coast Parliamentary Secretary Mr Adam Crouch had "fiercely denied the waterway was a State Government responsibility", claiming that it was "crystal clear that the waterways on our coastline that do not contain State maritime infrastructure assets are defined as 'local waterways', and are thereby the responsibility of local councils".

The narrative of 2018 in which Mr Crouch demanded the channel be opened at large expense by Central Coast Council has since

changed to being the responsibility of the NSW Government and has been a long time coming.

Ms Tesch said the new announcement was a testament to the constant community pressure.

"We knew back in 2018 that the Channel needed ongoing dredging works from the NSW Government.

"It is great to finally have a resolution and see Mr Crouch admit to our community has the need and right to have our channel accessible.

"I trust the issues we experienced before will never happen again."

SOURCE:
Media release, 3 Aug 2021
Liesl Tesch, Member for Gosford

Health

New chief executive still settling in

The new chief executive of a Umina aged care home says he is still settling into the job.

In the Peninsula Village Pipeline newsletter, Mr Fred Van Steel said: "I have been making my way around the Village over the last month introducing myself and have been overwhelmed by the support. "As this is my first Pipeline, I promise I will get better at providing my CEO Report as I settle further into the job."

Mr Van Steel said: "At present, Covid-19 restrictions mean we are closed to all visitors. "Our staff are working hard to ensure you are kept safe and are in touch with your loved ones. "We are facilitating Zoom and Facetime calls and keeping as many activities as possible running as normal."

Mr Van Steel said: "The vaccination landscape remains very murky with a raft of unclear

messaging coming from the Federal Government. "We will continue to look to vaccinate our residents and staff safely while liaising with the relevant industries bodies to receive the latest information."

The past month also saw a departure from the Village's executive team. "Our executive care manager Ms Melinda Dempsey departed at the beginning of July after 23 years

at Peninsula Villages. "I know you all would have been touched by her passion and dedication at some point during your time here, and I'm equally confident you will join me in wishing her good luck in her next adventure and in thanking her for her time at our Village."

SOURCE:
Newsletter, 6 Aug 2021
Fred Van Steel, Peninsula Village



Forum

Was carpark sale cancellation easier than schemozzle?

Why would anyone want to keep the ugly and underutilized Bullion Street carpark ("Council staff decide against Peninsula land sale, PN 524)?

Here was a perfect opportunity to realize some value from a well-located site that, at the moment, is just an ongoing expense for the community. What is doubly puzzling is

that the staff report, apparently, suggests that the sale should go ahead, while, somehow, concluding that it shouldn't. Of course, the redevelopment of the site would have required clever formulation of the sale conditions and close scrutiny of the work, to ensure compliance. Perhaps, Council has nobody with the qualifications for such a task, so it was easier just to cancel the idea of a sale than

see the whole thing turn out to be a shemozzle, because of incompetent management. Incidentally, the Council has elaborate conditions for the development of parking lots and enforces them on private owners. Why doesn't the Bullion St lot meet Council requirements, if it is going to be retained?

SOURCE:
Email, 3 Aug 2021
Bruce Hyland, Woy Woy

Taxation without representation: our Boston Tea Party

Along with all the other long-suffering ratepayers of the Central Coast, I think I know how the British colonists in Boston felt when they dumped all that tea in the harbour.

After all we've got exactly the same situation; taxation without representation. Surely we've had enough "rule by bureaucrat" to be entitled to toss a virtual tea chest or two into Brisbane Water? The first of those virtual tea chests should surely contain "The Referendum". This was produced by that well known personage, Ino Best from "Over the Hill". Unfortunately it doesn't fulfil even the vague promise it's name implies. It purports to be a choice blend, but the two components "Status Quo" and "Even Worse" ensure a bad aftertaste. It even fails to reach its real goal, which is to mimic a tea drinking experience. Next to hit the water should be "Amalgamation". This tired old brew is not so

much a blend but more of a shotgun marriage. It was forced many years ago by the "Powers down South" in a bid to fatten the coffers. The golden dream that its originator's prophesy is never realised. Instead it descends into a depressing and recurring nightmare. Last and least how about "The Development Control Plan"? The fate of this rarely tasted concoction seems to be to forever sit on a shelf and be ignored. Even when it is imbibed, it is so watered down as to be beyond weak. As such it's obviously a complete waste of space and will not be missed by our forward-thinking plutocracy. These are the three that come most to mind but there are many others such as "The Sorcerer's Apprentice", "Crouching Tiger" and "Where's Lucy?". In common with the Boston colonists, I propose a refreshing new brand - "Return to Democracy".

SOURCE:
Email, 31 Jul 2021
Frank Wiffen, Woy Woy

Town centre cannot take place of shopping plaza

I refer to page one of Peninsula News on July 26 and the false belief Woy Woy town centre can compete with Deepwater Plaza's retail attractions.

The situation is an exact smaller version of the situation that shop owners face in Gosford, competing against the especially designed centre of Erina Fair. Cosmetic planning decisions to singularly improve Woy Woy's centre, will not change consumers support of retailers in Deepwater Plaza. The enormous planning challenge is to upgrade Woy Woy town centre to a standard that will attract customers from Deepwater Plaza.

The cost to carry out this cosmetic upgrade is beyond the financial resources of all those concerned. Development of Woy Woy's town centre will be assessed according to the Council's assessment practice. Each submitted application will have the proponents desired returns, not necessarily in line with retailers and residents. The matter becomes more complicated as the nearby transport hub expands in line with population increase. It's farcical to believe Woy Woy town centre will replace Deepwater Plaza as the retail centre of the Peninsula. This proves that the Council's sale of assets to assist retailers in

Woy Woy town centre was hastily decided without the required research and investigation. Residents were outraged by Administrator Persson's support of this fire sale decision. An example of the best that can be achieved is the extension to the library, which involved lengthy discussion with the Council's Environmental Heritage Advisory Committee. It will be years before the council can propose with confidence changes to WWTC. A strong resident voice is essential to counter the council's disastrous planning and development decisions.

SOURCE:
Letter, 29 Jul 2021
Norm Harris, Umina

Public Notices

The Peninsula Day Branch of the N.S.W. Labor Party meets the **2nd Monday of each month** from February to December

The meetings commence at 1.00pm and are conducted in **the CWA Hall Woy Woy**, opposite Fishermans Wharf.

The meetings are well conducted and encourage interesting and diverse conversations.

All interested persons are most welcome.

ABC "The Friends"
Support group for Public Broadcaster

Aims:
Safeguard ABC's independence, adequate funding, high standards.

Meetings through the year + social mornings.
Well-known guest speakers

0400 213 514
www.fabcns.org.au

Car Boot Sale
Woy Woy Peninsula Lions Club

AUG 29

CANCELLED
due to current coronavirus health concerns

Enq: 0478 959 895
COVID SAFE

Peninsula News
Community Access

offers **Classified advertising** at affordable rates

Contact us for details:
4243 5333
advertising@peninsula.news.

No bridge

The Brisbane Water Bridge Club has announced that it will not operate during the lockdown period. Club special events scheduled in the lockdown period have been postponed. If the lockdown ends on August 28, the club will reopen on Monday, August 30. A revised calendar when the lockdown is lifted.

SOURCE:
Website, 29 Jul 2021
Brisbane Water Bridge Club

Domestic violence service tells Rotary about its work

An Ettalong domestic violence support service addressed the Rotary Club of Woy Woy by video link for its August 3 meeting.

Rotary club president Ms Julie Jones said: "Their vision is that all people should be safe in their home."

"Their service ethos is: Guiding you through the storm."

"Their mission: to serve our local community in transforming lives from simply surviving to thriving."

Ms Jones said that, for those living with or leaving domestic and family violence, the focus of the service was keeping families together.

The club was told that 60 per cent of the Peninsula Lighthouse intake came from 1800 RESPECT; 30 per cent from the internet and 10 per cent from other referrals.

"Within 24 hours of contact an appointment is made within Peninsula policy guidelines."

She said Peninsula Lighthouse provided clients with on-going casework and referral to other services, including accommodation, food, finance

and debt assistance, legal, trauma assistance, care, counselling and job seeking.

It provide safe connect group and divorce care program.

There were information sessions and mentoring on relevant topics as well as "fun opportunities" to connect back into the community.

Ms Jones said: "The community benefits for the Peninsula program are reducing the risk of violence in the community; improving mental health of sufferers; an enhancing holistic support program, and ensuing that our community is a safer place to live."

Fundraising for the past 12 months had come mostly from private funding, with some from donations, clients and fundraisers.

Ms Jones said the club gained an insight into "the tremendous work being done with individuals and families that come to them for assistance".

"There was great interest from our members with plenty of questions."

SOURCE:
Newsletter, 8 Aug 2021
Julie Jones, Rotary Woy Woy

'Don't use chewing gum on memorial,' say heritage restorers

The Rookwood Cemetery monumental heritage team has restored the Woy Woy War Memorial from the damaging effects of chewing gum, high-pressure water cleaners and previous poor repair work.

The team had two messages: Chewing gum should never be on a war memorial, and never use a high-pressure water cleaner on a war memorial or headstone.

If the memorial is to last into the future, the practice of attaching poppies to the monument with chewing gum on Anzac Day will have to stop, according to the Gosford-based Poppy Project group.

"Many are unaware of the damage that is done unknowingly."

The group has urged community members to refrain from using chewing gum in future.

It has also asked the council not to use a high-pressure cleaner on the memorial.

"One of the most damaging things we can do to ruin a memorial or headstone is to use a high pressure cleaner to wash and clean historic monuments."

"Unfortunately, a high pressure cleaner has clearly been used on the Woy Woy Memorial in the past, and has removed the clear



definition of the decorative features on this monument."

The conservation and restoration project for the War Memorial erected in 1925 was made possible by a \$9600 grant from the NSW Community War Memorials Fund and a \$10,000 grant from a Federal Saluting Their Service Commemorative Grant.

The group said that the cenotaph was originally provided by public subscription and that the park was designed around the Australian flag and associated symbolism of the First World War.

The upper part of the memorial was made of prized Wondabyne

sandstone, with the memorial maker being T Andrews and Sons of Lidcombe.

Repair work included stabilising the cracked spire, fixing cracks in the spire's base blocks and repairing the lead lettering on the marble inscription plates

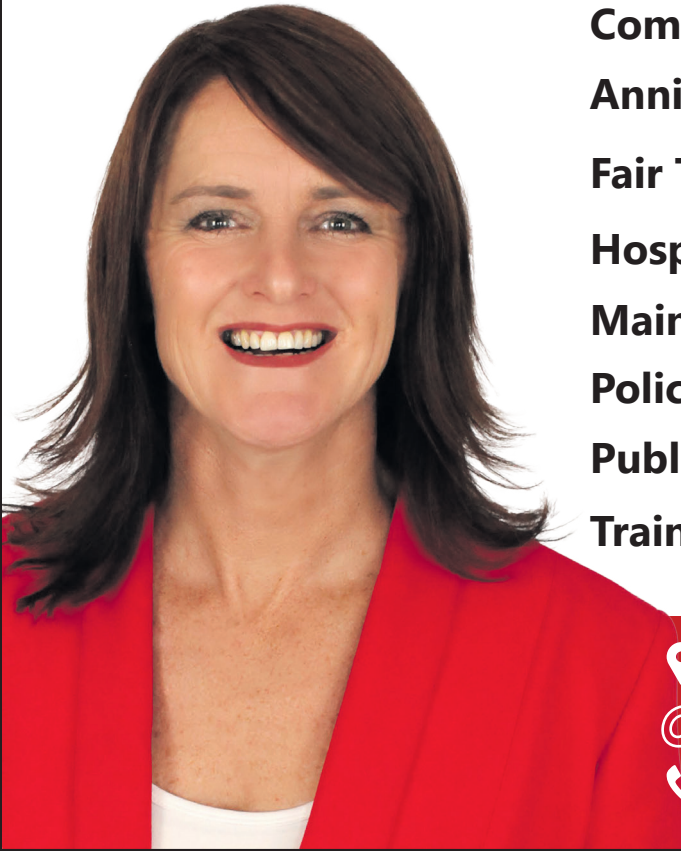
It also involved removal and replacement of failed epoxy patches, armatures and missing stone portions of the pedestal base and plinth.

SOURCE:
Social media, 23 Jun 2021
Poppy Project, Never Forgetting the Sacrifices Website, 3 Aug 2021
Central Coast Council



Liesl Tesch MP
Member for Gosford

How can I help?



- Schools and education
- Community Recognition Awards
- Anniversary & birthday messages
- Fair Trading
- Hospitals and health
- Main roads
- Police and Emergency Services
- Public housing
- Trains and public transport

20 Blackwall Road, Woy Woy NSW 2256
Gosford@parliament.nsw.gov.au
(02) 4342 4122



Authorised by Liesl Tesch, 20 Blackwall Road, Woy Woy NSW 2256. Funded using Parliamentary Entitlements.

Sport

PCYC makes walking workout suggestions

PCYC Umina Beach has made some suggestions to get more value from your Covid-safe walking workout.

“When you head outside this weekend for your Covid-safe workout, consider adding something extra to your walk,” said manager Ms Emma Tanner.

“Getting outside is proven to make you feel better and more connected to your neighbourhood and nature.

“But, it doesn’t only have to be about walking or jogging.”

Ms Tanner suggested taking a towel to do sit-ups, push-ups and sumo squats on the grass.

“Find a steep hill or stairs and run up them a couple of times for a cardio workout.

“Find a log or a curb and practice some balancing. Walk across the ‘tightrope’ and turn on the balls of your feet

“Carry hand weights to add oomph.

“Throw in some walking lunges and single-leg hops.”

Ms Tanner said: “There’s no limit to the ways you can spice up your walking workout.

“Just get out there.”

SOURCE:
Social media, 30 Jul 2021
PCYC Umina



Deck extended with concrete roof terrace at bowls club

Central Coast Council has approved alterations and additions to the Ettalong Bowling Club in Springwood St, Ettalong, which see the extension of an existing deck with a new concrete roof.

Plans submitted with the application also show outdoor seating and a children’s play area created over one third of an existing adjacent bowling green.

The application, submitted by Cityscape Planning and Projects described the site as accommodating “a large club

facility together located in the central sections of the site with four bowling greens located along the northern and western boundaries”.

“A large, at-grade car park is provided at the eastern and southern sections of the site.”

The application sought “deletion of louvres to east and west elevations and deletion of airlock south east corner of area.

It sought relocation of interconnecting door and canopy between existing outdoor gaming and deck, and the metal roof “changed to concrete finish”.

The proposal involves modifications to alterations and additions to club including a roof terrace.

In approving the application, council planning staff commented: “The proposed modifications will not result in adverse amenity impacts on the adjoining properties and the streetscape.

“The proposed development is substantially the same as the development that was originally granted consent.”

SOURCE:
DA Tracker, 6 Aug 2021
DA58029, Central Coast Council

Teachers receive certificates for excellent teaching

Woy Woy South Public School teachers Mrs Sian Watson and Mrs Natalie Fullagar have been awarded Education Week Excellence in Teaching Certificates.

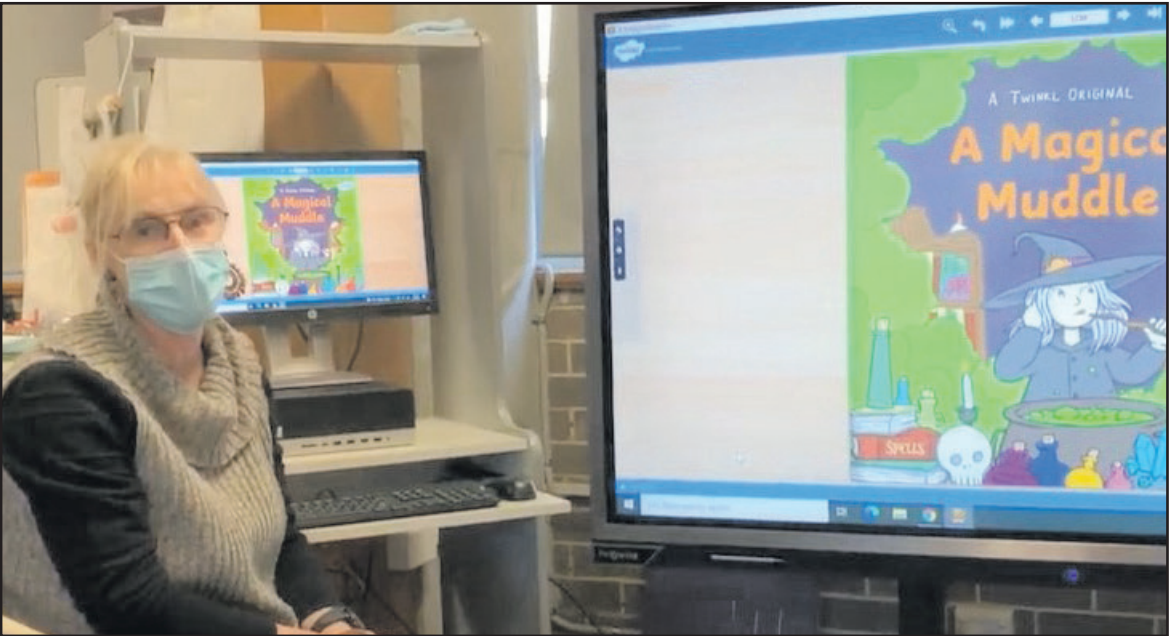
“Both of these amazing people are very highly valued by everyone at our school,” said principal Mr Matt Barr.

“They have continually shown passion and commitment to teaching Woy Woy South children for over a decade.”

Mr Barr thanked them for their hard work and the critical part they have played in the success and development of the school.

SOURCE:
Newsletter,
Matt Barr, Woy Woy South

Education



Ettalong Public School presents ... more online videos

Ettalong Public School has increased its series of “Ettalong Public School presents ...” online videos.

As well as adding six more book readings in the last week, the school has also added a cooking lesson: “Ettalong Public School

presents Cooking Scones with Mrs McLachlan”.

The book readings and the cooking lesson are available on the school’s YouTube channel.

Among the most recent book readings uploaded are: Mrs Smith reading A Magical Muddle, Miss Manuelle reading Can I Join Your

Club, Mr Theobald reading Calm Down Boris, Mrs Fabri reading Baby Bunny, Mrs Brown reading Ollie and the Wind and Mrs Brown reading My Friend Fred.

SOURCE:
Social media, 1 Aug 2021
Jodie Campbell, Ettalong Public School

School optimistic about Stage 3 school camp

Coronavirus restrictions in place on August 28 will determine whether Woy Woy South Public School Stage 3 students will attend their scheduled school camp.

Principal Mr Matt Barr said the camp was scheduled for week 10 this term, Wednesday to Friday, September 15 -17.

“At this stage, we are staying optimistic that we will be attending and the Stage 3 Staff are preparing accordingly.

“In the coming weeks, there may be some information being distributed to help us formulate cabin groupings and health/ medication/well-being plans.

“Obviously, a lot is dependent on the restrictions we face once we hit August 28 and this will ultimately decide if we proceed with the camp.”

SOURCE:
Social media, 3 Aug 2021
Matt Barr, Woy Woy South Public School

Bite-sized ethics lessons to chew over at home

Woy Woy South Public School students are being offered a series of 20 specially-designed bite-sized ethics lessons to chew over at home.

“Bites” for the K-2 age group were designed for children to tackle individually, with one or more family members, assisted by an adult, said school principal Mr Matt Barr.

“Bites” for Years 3-6 were designed for children to work on individually or with a family group.

“An adult learning supervisor may like to take part by helping read the stories and questions and helping children think for themselves about the dilemma we pose.

SOURCE:
Newsletter, 28 Jul 2021
Matt Barr, Woy Woy South Public School