



Joyce turns 101

Vera Joyce Tee (nee Nash) celebrated her 101st birthday on Monday, December 7, at her home in Umina Beach with a small gathering of family and friends, over the Sunday and Monday.

Joyce, as she prefers to be called, was born in Canowindra NSW in 1919, one of nine children.

She was the youngest daughter but the middle child.

Joyce and her husband Reg moved to Umina Beach in 1964 to provide two of their four children with a career.

Their son Colin passed away in 1980 and she lost her husband Reg in 1993.

She has three surviving children, daughter Zoane and sons Frank and Don, and six grandchildren and 15 great grandchildren.

"Joyce is a stalwart of the

Ettalong Uniting Church, still attending regularly on a Sunday morning, until Covid prevented the Church services," said daughter-in-law Ms Susan Tee.

"She thanks all those around her who have helped to get her to this amazing milestone - her local GP Dr Michael Crookes; her good friend Robin; Anne and Sharon from Legacy for their never ending support; girls from Kincare who come daily to look after her; her family and her faith in God.

"Joyce still lives in her own home and is bright as a button," said Ms Tee.

"She still cooks and enjoys shopping but absolutely loves having friends and family come to visit."

SOURCE:
Media release, 12 Dec 2020
Susan Tee, Woy Woy

Council cuts \$5.6 million in Peninsula projects

More than \$5.6 million in projects on the Peninsula will not proceed this financial year as a result of Central Coast Council's 2020-21 first quarter budget review.

Details of the review were released with the "30 day interim report" of council administrator Mr Dick Persson, adopted at a special council meeting on Wednesday, December 2.

"Council's capital works program has been extensively reviewed to identify projects that can be deferred or paused or undertaken from external funding, to improve Council's financial position," Mr Persson said.

He said the review identified savings of \$65 million from cancelling, deferring or reducing projects across the municipality.

The largest cut on the Peninsula was to reduce the allocation for the Peninsula Leisure Centre air handling system upgrade by \$3.2 million by "pushing back" its construction to next financial year.

The project's total budget of \$4.29 million was reduced by \$3.218 million, leaving \$1.072 million to be spent on design this year.

The scope of improvements to flooring, roof and access ladders at the leisure centre was also reduced, with that allocation going from \$110,000 to \$60,000.

An allocation of \$1.35 million to upgrade the Rogers Park amenities building has been reduced by \$450,000 to \$900,000, with part of the project deferred until next financial year.

A number of projects that have not started will not proceed, but "will be considered in future program".

These include a wharf at Woy Woy Bay (\$395,000), Woy Woy town



Leisure centre air conditioning project "pushed back"

centre tree surrounds (\$192,000) and seawall reconstruction at Monastir Rd, Phegans Bay (\$165,000).

Other projects will include the conversion of an unused office area into a change room at Woy Woy tip (\$130,000), Woy Woy town centre picnic shelter and tables with seating (\$100,000), Mt Ettalong Rd embankment stabilisation (\$75,000) and covered storage for cold mix within Woy Woy Stores bulk yard (\$20,000).

A \$107,000 natural area escarpment stabilisation project between Castle Circuit and Homan Close, Umina, has been "deferred due to Greenhaven Dr emergency works expected to be higher than original budget".

An upgrade to the Correa Bay boat ramp has had its budget reduced by \$101,000 to \$124,000 "to offset other increases".

A number of sewerage and Lesirewater projects have been placed on hold.

A sewer pump station upgrade at Cowper Rd, Umina, costing \$362,000 will "be considered as part of future program".

A rising sewer main replacement in Maitland Bay Dr, Ettalong, has been placed on hold with \$11,000 of its previous budget of \$247,000 to be spent this year.

It "will be completed as part of future program".

A \$43,000 water pump station refurbishment at the Rampart, Umina Heights, has also been placed on hold, as has a \$10,000 sewer pump station renewal at Lagoon St, Ettalong.

SOURCE:
Central Coast Council
agenda 2.1, 2 Dec 2020

Supporting the Peninsula community

**Only Peninsula advertising
Only Peninsula news**

Peninsula News – a community effort

Peninsula News is researched, written, produced and distributed by volunteers from our non-profit community group, The Peninsula's Own News Service Inc, and its supporters.

A voluntary non-profit group has owned and operated Peninsula News over the past 21 years, and continues under the leadership of its founding editor Mark Snell.

Although many offers have been made, more help and support is needed, and community involvement is welcomed.

Volunteer opportunities are available in all aspects of the newspaper's production, from news gathering and photography, through to seeking advertising and administration.

It will continue with the same editorial policies that have seen it develop an extraordinary level of recognition, appreciation and support over the years: comprehensive and exclusive coverage of news relevant to the Peninsula, encouragement of well-informed discussion of issues affecting our future locally and support for the Peninsula community.

Peninsula News is not associated with the Pelican Post and, after a 20-year association, no longer has a relationship with Central Coast Newspapers, which previously produced Peninsula News on our behalf.

SOURCE:
Mark Snell, editor
11 Dec 2020

**Our next issue:
Monday,
January 11**

Distribution points

Our main distribution points are:

Ettalong:

Ettalong Diggers Club, Ettalong Bowling Club and Ettalong IGA.

Umina:

Aldi, Woolworths, Coles, Peninsula Office Supplies, Lois Jones Real Estate and the Bourke Rd Store.

Woy Woy:

Deep Water Plaza, Peninsula Plaza and Peninsula Leisure Centre.

New contact details

NEWS: contributions@peninsula.news

ADVERTISING: advertising@peninsula.news

DISTRIBUTION: distribution@peninsula.news

Peninsula News

Community Access

Peninsula News is a fortnightly community newspaper for the Woy Woy Peninsula, owned by The Peninsula's Own News Service Inc, a local non-profit incorporated association. Its aims include providing a viable, non-partisan news medium and forum exclusively for the Peninsula and developing a strong sense of community on the Peninsula.

Editor: Mark Snell
 editor@peninsula.news
Advertising: Frank Wiffen
 advertising@peninsula.news

NEXT EDITION: Peninsula News 510
 Deadline: Thursday, January 7
 Publication date: Monday, January 11

CONTACT DETAILS
 NEWS: contributions@peninsula.news
 address and contact details. Only name and suburb will be published.
 ADVERTISING: advertising@peninsula.news
 PHONE: 4342 5333 - Please leave a message
 POSTAL ADDRESS: PO Box 585, Woy Woy NSW 2256

Please note: Peninsula News currently has no paid employees, and it may take a little time for us to get back to you. Our volunteers usually have other jobs and commitments, which compete for their time.

EMAIL ISSUES?

When emailing us, you will note that the domain name is PENINSULA.NEWS only. There is no .com or .com.au. If your email bounces or does not appear to have reached us, please check the address and try again. If this still does not work, try our old fallback address or call us by phone and leave a message.

Fallback email address: editor@peninsulanews.asn.au

Editorial policy and guidelines

At its heart, Peninsula News is a community effort.

It welcomes and relies on the contributions provided voluntarily and at no cost by local organisations, groups and residents.

The newspaper aims to be accessible to the community - both through making its columns accessible to community groups and by having copies available in accessible locations, including through its website.

The following policies and guidelines are designed to support the aims and standards of the newspaper.

Locality

The newspaper's editorial policy reflects a desire to reinforce the Peninsula's sense of community.

To qualify for publication, articles must have specific relevance to the Peninsula. For example, they must be about activities or events happening on the Peninsula or be organised by or involving Peninsula people.

The newspaper is not regional or national in nature, so regional or national issues will not be canvassed except as they affect the Peninsula.

Regional sports will only be covered from the perspective of Peninsula clubs. Regional plans will only be aired in the context of their ramifications for the Peninsula.

Peninsula News aims to be inclusive of as much of the Peninsula community as possible.

Readability

To ensure that the newspaper serves its purpose, it must be readable and represent the interests and activities of the community in its content.

Contributions to the paper are edited to consistent standards of readability. Guidelines are available for intending contributors.

All items will be dated. They must contain the name of the author to whom the contribution may be attributed, with their first name spelt out, along with their suburb or organisation. Anonymous contributions will not be accepted.

Forum letters

The Forum section provides the opportunity for readers to express their views on any aspect of Peninsula community life, with the aim of reflecting the community's diversity of opinion.

Nevertheless, letters may be edited for readability, including for length, spelling and grammar, and to avoid legal liability on the part of the newspaper, or they may be declined altogether.

Contributors are asked to keep their

contributions to the matter at hand, and to focus on the issues and not abuse or insult others.

Other than in the case of holding public figures to account, criticism of others (as opposed to criticism of particular opinions) is unlikely to be published in the interests of facilitating the expression of a diversity of views.

All letter writers need to supply name, address and contact details. Only name and suburb will be published.

Contributors who do not wish the wording of their letter to be changed at all should make a note to this effect when submitting their letter. In some cases, this may result in the letter not being published.

Corrections

We try to be as accurate as possible. However, mistakes can still slip through.

If you believe we have got something wrong, whether an error of fact or interpretation, we ask that you write to us by email with details for publication. These corrections may appear as Forum letters or as news items and should conform to our requirements for news and Forum contributions.

Source lines

Peninsula News includes "source lines" at the end of each article which aim to provide readers with information about where and how we came across the information, so that they might judge for themselves the veracity of what they are reading.

It should not be assumed that the article is a verbatim reproduction of the source. Similarly, it should not be assumed that any reporter listed is necessarily responsible for writing the whole news item. Source lines are not by-lines.

Often articles come from a number of sources. They are edited for readability and reader interest and given different headings, and consequently can be expressed quite differently from the source material.

Peninsula News usually receives its information in three ways: It is sent to us by someone wanting to promote their activities; it is sent to us in response to our inquiries; or it comes from a newsletter or other document to which we have access.

Sometimes we may interview a person or report what they said at a meeting.

The following descriptions are used:

Media Release - unsolicited contributions.

Media Statement - sent in response to our questions. **Website** or **Social Media** - information published online.

Report - published in print or online.

Interview or Meeting - statements recorded by a reporter.

Forum contributions may be: **Email** if sent electronically and **Letter** if written on paper.

Two days left for Mary Mac's appeal

Woy Woy shoppers have just two days to add their Christmas gifts to an annual collection for the Mary Mac's Place service for "anyone who is homeless, transient or needing a helping hand".

Gifts for men aged 25 and over are needed and can be donated at Deepwater Plaza shopping centre until Wednesday, December 16.

"This year we have been overwhelmed with gift donations

for women and children, leaving little to no gifts for our male friends at Christmas," said Mary Mac's manager Ms Catherine Pantehis.

"The gift donations for men will ensure no one goes without receiving something special for Christmas at Mary Mac's Place."

Suggested donations include socks and underwear, chocolates and treats, bathroom packs, breakfast and tea and coffee gift packs.

A collection bin is located outside Kmart.

Deepwater Plaza centre manager Ms Marcelle Proper said: "Every year our shoppers and retailers are so generous in supporting our annual gift donation drive for Mary Mac's Place."

"We encourage anyone who can make a difference to participate."

SOURCE:
 Media release, 2 Dec 2020
 Jodie Elkin, Deepwater Plaza

Christmas tree sale attracts unforeseen demand

The Christmas tree sale by the Rotary Club of Woy Woy attracted unforeseen "incredible demand" to the railway station carpark from 7am on both of the last two Saturdays, December 5 and 12.

"We sold an incredible two days' worth of trees and stands and were all sold out by 9.30am on December 5," said Rotarian Ms Susan Tees.

"We were back again Saturday, December 12.

"This week despite a sudden scud we managed to keep dry and sell all our trees by 8am.

"Once again people were waiting at 6am when we arrived to set up and trees flew off the trailers thick and fast."

Ms Tee said the trees were grown and transported from Colac in Victoria.

They were cut, transported and sold within two days "so they arrived nice and fresh".

She said customers had co-operated with the process required to meet coronavirus requirements.

"Our customers entered via the entry station, signed the Covid page and then lined up to pay for their trees and exited via the



correct lane.

"It made the whole process so much easier for all concerned."

Ms Tee apologised to those who missed out on a tree this year.

"No one could have foreseen the incredible demand that there was," she said.

Half the proceeds of the sale are donated to the Grandparents Raising Grandchildren program of Central Coast Family Support Services, and the other half are donated by the Rotary clubs to local charities, Ms Tee said.

New club member Ms Liz Jazwinska is pictured holding a Christmas tree while fellow Rotarian Mr John Regan cuts the trunk to help the tree absorb water and stay fresh for longer.

SOURCE:
 Media release, 2 Dec 2020
 Susan Tee, Rotary Woy Woy

Nominations wanted

A Woy Woy shopping centre is calling for nominations of "deserving local community members" to receive a Christmas gift.

"We have over 300 gifts to give away to deserving local community members," said Deepwater Plaza centre manager Ms Marcelle

Proper.

Anyone can "nominate someone special who needs extra cheer this year".

The person nominating will also go in a draw for a \$500 gift card.

SOURCE:
 Media release, 2 Dec 2020
 Jodie Elkin, Deepwater Plaza

Rain fell mainly on three days

A total of 33.3mm of rain had fallen on the Peninsula in the first 11 days of December, according to figures supplied by Mr Jim Morrison of Umina.

The majority of this came in three days.

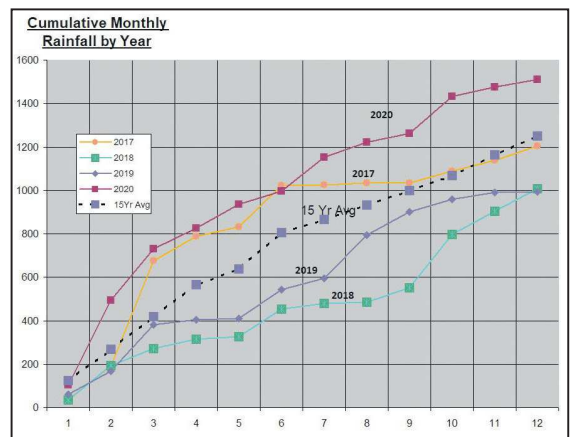
More than half, 16.8mm, was recorded on December 2.

Falls of 12.5mm and 3.2mm were recorded on December 6 and 11 respectively.

Average rainfall for the month is 85mm.

The year-to-date rainfall stands at a total of 1509.8mm, 20.8 per cent above the average annual rainfall of 1250mm.

SOURCE:
 Spreadsheet, 11 Dec 2020
 Jim Morrison, Umina



Accommodation booked out for holiday season

Accommodation around the Peninsula is close to booked out for the holiday season, showing a welcome recovery from the effects of coronavirus pandemic, according to Ettalong tourism officer Ms Kim Cole.

"Ettalong Diggers Visitor Information Centre has been receiving a high volume of enquiries for accommodation on the Peninsula during the holiday season," she said.

"Current availability is minimal to non-existent.

"The closest destination we were able to recommend for accommodation was Terrigal and The Entrance".

"For the month of November

occupancy levels mid-week were 60 to 70 per cent and weekends 95 to 100 per cent.

"Peninsula businesses have also experienced an increase in foot traffic during November and even higher numbers in December.

"Our centre has even been welcoming guests from Victoria and Queensland."

Ms Cole said the primary responsibility of the Ettalong visitor information centre was to promote local tourism and to have a direct positive impact upon the economic, social, and recreational well-being of the Peninsula.

She said the centre's team aimed to provide friendly, honest and unbiased information to visitors that encourages them to stay longer, spend more money,

experience more attractions and revisit.

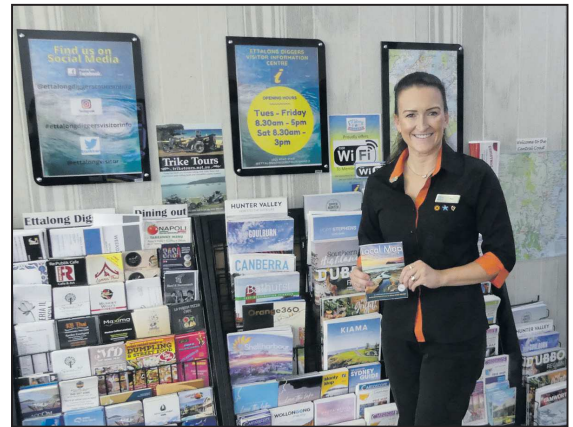
"Our Centre motto is: We aim to make your stay at Ettalong Beach a memorable one.

"We encourage local business owner-operators to touch base with our centre and to follow our social media pages to discover the best things to see and do on the Central Coast"

She said the fully-accredited visitor information centre also had giftshop items including pearl jewellery and works from local artists and photographers.

It was situated in the Ettalong Diggers Club foyer.

SOURCE:
Media release, 11 Dec 2020
Kim Cole, Ettalong Visitor Information Centre



Death adder in garden

A death adder has been found in a garden in Umina.

"These snakes are either red or grey in colour," said Mr John Mostyn of Coast Snake Catchers.

"They are a nocturnal species, an ambush predator and are able to camouflage themselves extremely well in their environment."

"We were called to the property at Umina to remove this snake.

"The home owners were gardening and didn't initially see the snake."

They were trimming branches from their plants, and only saw the snake when they went to pick up

one of the trimmed branches, he said.

This snake has previously been found around Umina, Woy Woy and Patonga, and the colour shades may vary.

"If you reside in these areas, please always wear enclosed shoes outdoors and gloves if gardening," Mr Mostyn said.

"Before sticking your hands into garden beds or leaf litter, rake the area and check for any movement first."

SOURCE:
Social media, 6 Dec 2020
John and Tina Mostyn,
Coast Snake Catchers

House prices rise, but some not to previous high

Median house prices on the Peninsula have increased by as much as 13.2 per cent in Umina and unit prices by as much as 25.6 per cent in Ettalong since the start of the year.

The median prices, published on realestate.com.au, come from property sales information provided by Property NSW.

The median house price in Umina in November was \$750,000 compared to a median price last December of \$662,500.

The current median unit price in Ettalong is \$653,000 compared to \$520,000 at the start of the year.

However, property prices at the start of the year were at a three-year low.

Compared to median prices for 2017 and 2018, current prices represent annual increases of less than two per cent.

In two cases, prices remain below those two or three years ago.

In Ettalong, the current median house price of \$765,000 is 8.3 per cent less than 2018 median of

\$835,000.

In Woy Woy, the current median unit price of \$515,000 is 7.2 per cent less than the 2017 median of \$555,000.

Umina house prices have risen 1.4 per cent since 2017, from \$740,000 to \$750,000.

Woy Woy house prices have risen 2.5 per cent since 2017, from a median of \$685,000 to \$702,500.

Unit prices in Ettalong have risen 4.0 per cent from \$628,750 in 2018 to \$653,000.

Umina unit prices have risen 3.0 per cent since 2017, from \$600,000 to \$618,000.

Member for Gosford Ms Liesl Tesch commented: "Property prices, both to rent and to buy, are continuing to rise despite the pandemic, with many Sydneysiders making the move to the Central Coast.

"The Central Coast median house price, according to Domain, has risen by 3.8 per cent in the past quarter, with Ettalong Beach prices rising by 15.1 per cent.

"As a consequence affordable housing is becoming a foreign concept despite the job losses,

overall economic downturn, and rising homeless crisis.

"The current affordable housing market is virtually non-existent with prices continuing to rise on the Peninsula."

"I hear too often the struggles locals are facing when it comes to paying their rent or entering into the property market and sadly many of these conversations are with women over the age of 50."

Ms Tesch said if affordable housing was not made more available, older women would be forced on to the streets.

"It is a fact that women over the age of 55 who are engaging in the private rental market have an increased risk of becoming homeless."

The rising property market has forced Sydneysiders to relocate to areas like the Central Coast while locals are being pushed further north.

SOURCE:
Media release, 1 Dec 2020
Liesl Tesch, Member for Gosford
Website, 12 Dec 2020
Median property prices,
realestate.com.au



The trusted name in PROPERTY MANAGEMENT for
HOLIDAYS + SALES + RENTALS

Ettalong office: 02 4344 6152 - www.ettalong.accomholidays.com

Kilcare, Daley's Pt, Ettalong, Umina and Pearl Beach, Patonga and Woy Woy



Non-complying application may be refused

The Central Coast Local Planning Panel has heard a recommendation to reject a Woy Woy development application because it did not "adequately justify departures" from planning provisions.

The application was for four three-storey and two two-storey townhouses in a \$1.4 million multi-dwelling housing development over two allotments of land with a total area of 1308 square metres at 259 Burge Rd and 200 Blackwall Rd, Woy Woy.

A planning assessment presented to the Panel listed variations to requirements for floor space ratio, to road access and to setbacks and other requirements.

The assessment stated: "The proposed development would result in an floor space ratio of 0.76:1 which is a variation of 26 per cent above the maximum permitted under the applicable controls.

"The proposal seeks approval for access from Blackwall Rd, a classified road, where a better design on site would allow access to be provided exclusively from Burge Rd which is not a classified road.

"As such, the consent authority must not grant development consent to the development proposed.

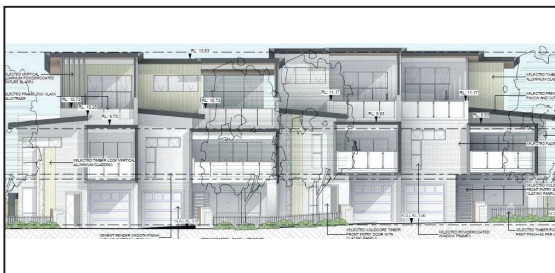
"A saw tooth arrangement of buildings results in multiple elements of the front and rear setbacks achieving only five metres of deep soil, representing a 16 per cent variance to controls.

"Side setbacks to northern boundaries are 2.01 metres, representing a 50 per cent variance.

"Side setbacks to southern boundaries are 2.5 metres, representing a 37 per cent variance.

"Third floor balconies are within the 2.5 metre setback to the east, representing a variance of up to 100 per cent."

The assessment stated there was a shortfall of three parking



spaces and that three spaces were provided within the front setback, where parking within front setbacks was not permitted.

All dwellings had garage doors on the street frontage, which was not permitted.

It stated that building fronting Burge Rd was 31.5m, but did not have a six metre square courtyard or a canopy tree within the front setback, as required.

"The driveways proposed do not allow opportunity for landscaped verges.

"The separation fails to provide satisfactory sunlight to Unit's 1 and 2, with both unable to achieve sunlight access in any useable quantity at mid-winter."

"Unit 1 and 2 fail to achieve minimum solar access to either internal living areas or external private open space.

"Units 3 and 4 will not achieve minimum solar access to external private open space."

The assessment stated that sunlight to ground floor units on the neighbouring property at 202 Blackwall Rd "is likely to be impacted by the proposed development".

Four private courtyards had insufficient space for solar access and clothes drying.

"They self-shade and are not considered high quality spaces.

"No private courtyard indicates inclusion of any tree."

The assessment also stated: "A six metre separation between bedrooms at the second floor between Unit 2 and 3, and eight metres between unit 1 and 4, representing a variance of between

33 per cent and 11 per cent."

The assessment recommended that the application be refused on grounds that included that it "fails adequately justify departures" from the applicable Local Environment Plan and Development Control Plan and the State Environmental Planning Policy (Infrastructure).

Other grounds were that the submitted documentation did not provide adequate information to enable a proper assessment of the proposal, and that the proposal was not in the public interest.

The panel heard submissions in the open session of its meeting on Thursday, December 10, but minutes of the panel's deliberation had not been published by the end of last week.

SOURCE:
Website, 10 Dec 2020
DA58026/2020, Central Coast
Local Planning Panel

Epidemic doesn't impede community group

The success of the Umina Community Group during the year ending June 30 was not impeded by the Covid-19 epidemic, according to group secretary Mr Peter Springett.

The annual meeting of the Group was held on December 3 at Club Umina.

It received a report on the group's activities for the year ending June 30 and elected its committee for the current year.

This was "despite the cancellation of two face-to-face meetings and restrictions on volunteer programs in the first half of this calendar year imposed by the State Government".

Mr Springett said that highlights for the year included planning for the new Umina skate park and for upgrades to sporting club facilities.

Volunteers participation increased in bushcare and dunecare and in the revitalisation of Runway Park, Woy Woy, and Guyangil Park, Umina.

Successful grant applications were made for a shared zone in the Esplanade between the two surf clubs and for a pathway linking the Esplanade to the Recreation Precinct.

A total of more than \$527,000 had been approved for the work, Mr Springett said.

Other activities included

movie nights, law and order and networking.

Mr Springett said: "The Park after Dark program was run by Jenn Rochford in conjunction with Jasmine Greens and with great success and enjoyment by locals who attended."

He said that group president Mr Ron Beale had maintained liaison with the police at Brisbane Water Local Area Command, and provided regular feedback to the team.

Mr Springett said: "As in prior years, the Group has maintained contacts and collaborated with a wide network.

"During the year we had interaction with the Federal and State Governments, Central Coast Council, Rotary clubs, sporting clubs, BMXers, skaters, surf clubs, the Men's Shed, the media and sponsors, including Bendigo Bank and Club Umina."

The annual meeting elected the following committee: president Mr Ron Beale, vice-presidents Mr Rod Unsworth and Mr Mark Nitsos, secretary Mr Peter Springett and treasurer Mr Bob Salkeld and directors Mr Tony Winch, Mr Dan Phillips and Ms Jenn Rochford.

SOURCE:
Media release, 7 Dec 2020
Peter Springett, Umina
Community Group

Warning of escarpment threat

The adoption of a "combined" planning scheme recommended for adoption at tonight's Central Coast Council meeting could open the way for houses to be built on the escarpment which surrounds the Peninsula, a conservation group has claimed.

Much of the bushland on the escarpment was council-owned land covered by the Coastal Open Space System, said Australian Conservation Foundation Central

Coast branch president Mr Mark Ellis.

The land would be zoned E2 under the proposed Combined Local Environment Plan and Development Control Plan, a zone in which houses could be built.

He said that, should the land be seen as "assets surplus to requirements", the council could sell it.

"If someone owns it, they could build on it.

"The E2 zone is inconsistent with providing high environmental protection," he said.

"There needs to be a specific zone where its protection from development is watertight."

A special zone was needed to support the community's desire to maintain the environmental integrity of the land which covers ridgelines and endangered bushlands, he said.

"In 2020 this unique environmental asset for the Coast faces the threat of being placed in E2 zone which allows secondary developments and housing.

"To rezone our environmental lands and open space land for urban and residential is contradictory to the key objective of Council's adopted biodiversity strategy.

"The former Gosford Council requested a specific environmental zone to accommodate the Coastal Open Space System," Mr Ellis

said.

"The NSW Planning Department supported a specific zone in 2010, and in 2015.

"In discussions with then Planning Minister Mr Rob Stokes, Gosford Council general manager Mr Paul Anderson stated: 'We didn't want educational establishments or dwellings that are allowed in some environmental zones in the COSS land, and we are never going to do that until we get a zone suitable for COSS.'

"In 2017, Central Coast Council voted to protect COSS and took the motion to the local government conference where a specific environmental zone was supported by the conference delegates.

"Mr Stokes was happy to work with the council then, why not in 2020?

"The only thing that has changed is the council staff and CEO.

"The structure, funding and importance of a stand-alone environmental protection zone remains," he said.

Mr Ellis said the branch had called on the Minister of Planning and local members of parliament to start the process to create a specific environmental protection zone for Coastal Open Space System land.

SOURCE:
Media release, 7 Dec 2020
Mark Ellis, ACF Central Coast

ADVERTISEMENT

UDIA - Is it responsible?

Mr Caine King, chair of the Urban Development Institute of Australia (UDIA) Central Coast chapter, has plenty to say in the Pelican Post (3 Dec 2020 p25) about Peninsula development.

The extensive pro-development report claims to identify all the issues that restrict development on the Peninsula.

There is only one comment that is accurate in the lengthy report.

Mr King has identified flooding as a genuine problem.

There are no follow up comments such as this problem was identified in the early 1990s by an independent consultant.

Other known problems with infrastructure, environmental management and social character seem insignificant to Mr King and the UDIA.

Why was a representative missing from the hearing to assess the Woy Woy Bowling redevelopment when it knows there are flooding problems in the area?

The voice of the UDIA was missing amongst the public objectors.

Accepting the UDIA acknowledges Peninsula flooding, does it take any action to alert the Council and potential buyers?

It would certainly be expected that the chair of the UDIA would have inside knowledge of why it has taken so long.

There must be reasons that are detrimental to the UDIA and its policies.

This is the reason for the secrecy.

Everyone opposing a development will know the answer, yet the UDIA is totally oblivious.

Can you believe that an Australian urban development institute is unfamiliar with LEP processes.

If this is true, it follows that input into the LEP process by the UDIA has extended the LEP assessment and could be the main contributing factor in the time extension.

Norman Harris, 8 Lovell St, Umina

Troubadour holds end-of-year concert

The Troubadour Folk Club held its end of year celebrations at the Everglades Country Club on Saturday, December 5.

The evening was sold out well ahead of time, said club president Mr Michael Fine.

"There weren't enough tickets to fit everyone in who wanted to attend under the Covid-19 regulations," he said.

"The 80 participants lucky enough to be there had a fabulous night with plenty to celebrate."

"From the opening with George May to the grand finale, the evening was full of energy and joy.

"This really was a showcase that showed the depth of talent in the Troubadour as members and other local performers took to the stage.

"The night was a procession of highlights, from the first Australian



recorded appearance of a Carnyx, the ancient Celtic War Horn, through to the Grande Finale which featured the Troubadour AllStars in a hearty rendition of 'Those Were the Days' and 'I'm dreaming of a hot Christmas'."

Mr Fine said that next year promised to be "even better" as

the club returns to regular program of concerts and sessions each month.

"Venues are still difficult to organise, but we are hatching some great plans," he said.

SOURCE:
Media release, 5 Dec 2020
Michael Fine, Troubadour Folk Club



Garage sale raises \$3000 for Men's Shed

The Umina Beach Men's Shed has raised just over \$3000 to support its operation through a garage-shed sale held in Woy Woy last month.

Coronavirus restrictions had ruled out the Umina CWA Hall, the normal location for the annual sale, according to Men's Shed secretary Mr Vic Brown.

"We were fortunate that the 'Auto Barn' facility in Charlton St, Woy Woy, allowed the Shed to use their yard and facilities for a pop-up Gara/Shed Sale."

Eight Shed members were involved in organising and running the day.

The sale opened at 7am and closed at 3.30pm, followed by a half hour clean-up and reloading the remaining merchandize into the trailers, Mr Brown said.

"Social distancing, log in-log out, sanitizing were in the system all day and our customers willingly complied.

"New homes were found for several trailer loads of tools and equipment and the funds generated returned to the Shed.

"We moved a lot of merchandise.

"There were heaps of small items at very low prices."

SOURCE:
Newsletter, 30 Nov 2020
Vic Brown, UBMSI

Church takes bookings for Christmas

Umina Uniting Church is taking bookings for its Christmas morning service.

It can now seat 68 people, plus worship leader and musicians, following the relaxation of coronavirus restrictions.

The meeting room can seat 26 for a total of 94 people in a worship service, said the Reverend Patty Lawrence.

"Physical distancing, that is

staying 1.5 metres away from people not in your household bubble, still applies," she said.

"The other major change is that we can now sing indoors during worship services, but you can only sing if you are wearing a mask.

"We are still required to keep a list of everyone who attends worship.

"Please continue to wear your mask to worship and sanitise your

hands as you enter.

"We will continue to have people to show you to your seats.

"Come and rejoice on Christmas morning, bring your family and friends.

"Please book in and wear your mask."

SOURCE:
Newsletter, 13 Dec 2020
Patty Lawrence, Uniting Church Broken Bay



Liesl Tesch MP
Member for Gosford

How can I help?

- Schools and education
- Community Recognition Awards
- Anniversary & birthday messages
- Fair Trading
- Hospitals and health
- Main roads
- Police and Emergency Services
- Public housing
- Trains and public transport



📍 20 Blackwall Road, Woy Woy NSW 2256
 @ Gosford@parliament.nsw.gov.au
 ☎ (02) 4342 4122

Community group sees volunteer participation grow

Umina Community Group has seen a substantial increase in volunteer participation in bushcare and dunecare activities, as well as in the revitalisation of Runway Park, Woy Woy, and Guyangil Park, Umina, the group's annual meeting has been told.

Group secretary Mr Peter Springett said that creating an extra two dunecare groups had resulted in an increase in participation.

"During the past year, activities continued with two groups - one at South St and one at Berith St - albeit with some restrictions," he said.

"A plan was devised to increase

the work to four groups which has subsequently been successfully implemented."

With a leadership team Jan Deighton, Mark Nitsos, Alison Winch, and Debbie Sunartha groups have been run at Ocean Beach Rd, Berith St, South St west, and South St east respectively.

All groups met on Wednesdays from 8am in summer and 9am in winter, Mr Springett said.

Volunteers have also been involved in revitalisation work at Runway Park, Woy Woy, and Guyangil Park, Umina.

Mr Springett said: "During the year several sessions were held at Runway Park, led by Debbie Sunartha and Gary Machin.

"This park has become a focus for young families in the area

impacting both Umina Beach and Woy Woy."

Mr Springett said that, during the year, Guyangil Park at 16 Australia Ave was identified as being in need of revitalisation.

He said the group had been successful in receiving Federal funding for the project.

"Discussions and meetings with Central Coast Council have been held and activities are somewhat delayed by the demise of the council," he said.

"Recently phase 1 of the new plantings at the park has been completed by an enthusiastic group of volunteers."

SOURCE:
Media release, 7 Dec 2020
Peter Springett, Umina Community Group



Organic store opens in Ettalong

A new bulk organic food store has opened in Ettalong.

Owner Ms Hayley Powell said she decided to open Pure Bulk Foods after her work in the travel industry fell through due to the coronavirus pandemic.

She said she looked around and discovered there was not much availability of organic foods in the area so she took the plunge.

"We aim to provide our community with nourishing natural

foods without any single-use plastics," she said.

The shop sells organic food and other products from rolled oats to rose petal bath soak, and including locally-sourced honey.

Hayley said she had moved to Sydney with electrician husband Josh. They own a house in Ettalong which they have been renovating.

SOURCE:
Media release, 1 Dec 2020
Hayley Powell, Pure Bulk Foods

Aged care home issues Christmas visitor guidelines

A Woy Woy aged care home has issued guidelines for visits to its centre on Christmas Day and through the holiday season.

Blue Wave Living chief executive Mr Matt Downie said that, for Christmas Day, the current restrictions remained in place.

"Visitors must only visit within the resident's room," he said.

"Visitors are not to spend time in any common areas, or interact with other residents.

"All visitors must have had the current flu vaccine and show evidence of this.

"Visitors must have their

temperature taken on arrival and check in with the QR code located in reception, using their smart phone."

Mr Downie said that visitors who were visiting a resident who is in a shared room must make a booking.

"Those visits will occur in the 'I See You' lounge area, or another nominated private area," he said.

"We are working towards planning some additional spaces to be available on Christmas Day to help with this.

"For visitors who are visiting a resident in a private bedroom, there is no need to make a booking.

"However, a resident cannot

have more than two visitors at any one time.

"Visiting hours will remain from 10am to 4pm, seven days a week.

"Family are welcome to take residents out for family visits from BlueWave.

"Unfortunately this year we cannot accommodate any visitors to join residents for lunch at BlueWave.

"We do encourage families to consider taking their loved one out to a family lunch, maintaining the NSW Health requirements around private gatherings."

SOURCE:
Newsletter, 3 Dec 2020
Matt Downie, Blue Wave Living

Back to the Peninsula after 18 weeks in Melbourne

The head of a local aged care provider has returned to the Peninsula after being confined to Melbourne for nearly 18 weeks.

Peninsula Village chief

executive Mr Shane Neaves said it was good to be back and "to talk directly to residents and staff without a Zoom meeting and limited access to everyday activities".

"The lockdown in Melbourne was an experience, to say the least," he said.

"But it was finally all worthwhile now that Victoria has reported 27 days of no new infections - a wonderful achievement and borders now reopening.

"While the world continues to focus on an antidote for Covid-19, we still need to remain vigilant and continue with the hand hygiene and screening of all residents and visitors.

"There is no doubt that the environment we live in has changed and will continue to be a threat to us all going forward.

"We do understand that it is a difficult time especially around the festive season, but public health guidelines are still being enforced and are there to protect us all.

"The festive season this year will be defined by that Covid grinch.

"There are many Christmas luncheons and limited entertainment planned for all sites - so at least we can enjoy the festive season together."

SOURCE:
Newsletter, 8 Dec 2020
Shane Neaves, Peninsula Village

BlueWave LIVING

Providing Residential Aged Care for over 30 years

Phone 4344 2599

6 Kathleen Street, Woy Woy NSW 2256
blueweliving.org.au

From everyone at BlueWave Living

New Umina principal named

The new principal for Umina Beach Public School has been named.

He is current deputy principal Mr Chad Tsakissiris.

"After an expression of interest process, a decision has been made by our Director of Educational Leadership that Mr Tsakissiris will lead this great school for 2021," said current principal Ms Lyn Davis.

Ms Davis leaves the school at the end of this year to take up a role with the Education Department's School Leadership Institute.

Ms Davis said Ms Sharlene Percival would step into the deputy principal role beside Ms Melissa Harrison.

"I know that the entire community will support the school executive into 2021," she said.

"I will transition into my head office position at the beginning of the school year.

"My heart will remain here at Umina Beach Public School.

"I have loved coming to work every day and I know I will miss the children."

SOURCE:
Newsletter, 8 Dec 2020
Lyn Davis, Umina Public School



Local Deadly Awards

Umina Beach Public School has won both the teacher and student sections of the 2020 Brisbane Water Deadly Awards.

Aboriginal and Torres Strait Islander student and teacher excellence in the Brisbane Water Learning Community are recognised through the awards.

The Learning Community includes Woy Woy, Woy Woy South, Ettalong and Empire Bay Public Schools and both Umina and Woy Woy campuses of Brisbane Water Secondary College, as well as Umina Beach Public School. Each school nominated a

student who displayed excellence in academic performance, cultural excellence, sporting excellence and attendance.

They also nominated a staff member who contributed to improving outcomes for the students. We proudly announce that Umina Beach Public School won both these awards.

Pictured are teacher Ms Di Meadham who won the award for Staff Commitment to Aboriginal Education with Saskia who won the student award.

SOURCE:
Newsletter, 8 Dec 2020
Lyn Davis, Umina Beach Public School

Rotary helps with farm double-bind

Agricultural students at Brisbane Water Secondary College are doubly disadvantaged compared to students in rural areas, according to Rotary Club of Umina president Mr Bruce Croft.

He said the college did not qualify for financial support from the Education Department, because the Umina campus farm was not in a rural area.

And because of this, the students had the additional requirement of having to travel and stay on a working farm as part of their course.

Mr Croft said teachers had found some farms that were happy to assist, but suitable farms were becoming more difficult to find.

"Accommodation at working farms has now become the main issue preventing the farm stays from proceeding.

"There are more and more restrictions and red tape regarding excursions such as farm stays, including gender classifications, occupational health and safety, and working with children."

Mr Croft said one option was for the college to provide its own self-contained accommodation, including eating and dining facilities.

"Umina Rotary members have taken on the challenge to construct a pop-up camping site, for excursions to a farm stay in places such as Forbes and Parkes or when showing cattle in Scone or Singleton."

The club had presented the college with 12 tents, 24 stretchers and four tables as the first stage of the project, he said.

"Eventually it is hoped that this could include a trailer that will have male and female showers, toilets and storage for the tents and stretchers."

Mr Croft said the club had been supporting the college farm for more than 30 years.

"The Ag Farm provides students from Year 7 onwards with interaction with farm animals such as cattle, pigs, sheep and poultry as well as crops, educating on all facets of agriculture and farming."

SOURCE:
Newsletter, 2 Dec 2020
Bruce Croft, Rotary Umina Beach

Bridge club must supply own wifi and cleaner

The transition to Council management of the Peninsula Community Centre has meant the Brisbane Water Bridge Club has had to buy a wifi "hot-spot" for internet access and to employ its own cleaner.

The club had not previously had to do this, according to the club's most recent bulletin.

Otherwise, the transition has been described as "fairly smooth".

With the relaxation of coronavirus restrictions, the club is no longer limited to 20 people per activity.

The club can now have up to 48 people in the bridge clubroom and the same in the seniors' room.

The club has organised a number of events for January.

A New Year's Cup will be held at 12:30pm

on Saturday, January 2.

The event will include a section for under 50 master points, if minimum five tables pre-register.

Open section pre-entry will not be required.

Individual Club Championship events will be held on Mondays, January 11 and 18 with a maximum of 40 entries.

Players must register for both sessions, at a cost of \$15.

An Australia Day Pairs event will be held at 12:30pm on Tuesday, January 26.

The event will include a section for under 50 master points, if minimum five tables pre-register.

SOURCE:
Website, 8 Dec 2020
Brisbane Water Bridge Club

Soccer coach and player awards

Umina United First Grade Women's soccer team coach Steven Donaldson and player Gemma Crowson have won awards from both from their club and Central Coast Football, following the team's grand final win.

Steven was awarded Women's Premier League Coach of the Year and Gemma Player of the Year.

Steven was awarded Umina's Senior Coach of the Year at the club's end of

season awards while Gemma was named the Player's Player and Freyja Murray Trevor Bleakley women's player of the year.

The Young Player of the Year went to Hannah Batten and Samantha Fulwood was named Junior Coach of the Year.

Aiden Downey was named the Under-18's player of the year.

SOURCE:
Media release, 5 Dec 2020
Mark Donaldson, Umina United SC

226 West St Umina Beach
4339 7644 *Lois Jones Real Estate*




FOR SALE

237 Ocean View Rd Ettalong Beach

BUY TODAY, FOR TOMORROW!!
Invest in your future today!!!
Luxury "Perfect Investments" Units
In the heart of Ettalong Beach Village
Pool Plus Gymnasium

Take your pick, Bedrooms as required.

- 1 Bedroom Starting from \$445,000 to \$600,000
- 2 Bedrooms Starting from \$610,000 to \$1,210,000
- 3 Bedrooms Starting from \$835,000 to \$2,338,000

16 Sold Already!

Waterfront/Park/ Reserve Nearby, The Box Restaurant, Ferry to Palm Beach. Near Perfection

Phone Today - Lois 0439 739 324 - Jess 0423 907 911



Merry Xmas from


 Lois Jones
0439 739 324
lois@loisjonesrealestate.com


 Jess Walsh
0423 907 911
jess@loisjonesrealestate.com


 Melissa Crease
0481 941 812
mel@loisjonesrealestate.com


 Nicole French
0481 941 812
nicole@loisjonesrealestate.com


 Steve Harrigan
0431 170 252
steve@loisjonesrealestate.com


 (02) 4339 7644
www.loisjonesrealestate.com

ADVERTISING email: advertising@peninsula.news

'Simo' is club's bowler of the year

Glen "Simo" Simington was awarded Umina Beach Men's Bowling Club's 2020 Bowler of the Year Award at the club's recent presentation day.

"It was a tight race throughout the year and wasn't decided until the completion of the last club championship of the year," said club secretary Mr Peter Springett.

"Bowler of the Year points are attained by either winning or being runner-up in the club's various championship events.

"Glen won the Major Singles and the Handicap Pairs and was runner-up in the Club Fours championship."

The top three final point totals were gained by Glen Simington 155, George Boni 145 and Robbie Andersen and Shane Waddell,



both with 125 points. Glen Simington is pictured with the Bowler of the Year trophy and the club's Major Singles trophy.

SOURCE:
Media release, 7 Dec 2020
Peter Springett, UMBMC

Change room negotiations delay skate park project

Work on the new \$8.25 million skate park and BMX track at Umina has been delayed by negotiations with sporting clubs for change rooms at Umina oval.

The Umina Community Group heard a report on progress at its annual meeting held at Club Umina on December 2.

Group secretary Mr Peter Springett said: "While funding of \$8.25 million for the upgrade of the skate park and the BMX track at Umina has been confirmed by the Commonwealth Government in writing, the agreement between the Commonwealth and the Central Coast Council has not

been finalised.

"Umina Community Group has continued to make representations to all parties involved to ensure that the facilities are delivered to our community.

"The agreement has been delayed by the negotiations for appropriate change room facilities with the sporting clubs.

"Once these have been agreed with the clubs the final agreement can be executed and the works can commence.

"Umina Community Group has advocated starting the BMX and skate park before gaining consensus with the sporting clubs but this has not gained agreement so far."

Mr Springett said upgrades to the sporting club facilities at Umina oval were "urgently needed to accommodate the growth of the clubs and the increase in gender diversity in their memberships".

He said the community group had made representations to both Central Coast Council and to the Commonwealth and had liaised with each of the clubs to move forward with the upgrades.

"It may be necessary to join with the clubs to increase the funding to make sure that all needs are met," he said.

SOURCE:
Media release, 7 Dec 2020
Peter Springett, Umina Community Group

Sunday social cycling series starts

Two bicycle rides in a new Sunday social series organised by the Central Coast Bicycle User Group will start from Woy Woy next month.

Social Sunday Cycles aim "to help get more people cycling to more places on the Central Coast", said group president Mr Alan Corven.

"These are short relaxed-paced rides on relatively quiet roads with a coffee stop and chat along the way.

"That's the social bit. "They are designed to help those who mostly ride on shared paths, to venture onto the roads in a supported small group environment and build up their road cycling confidence.

"There's safety in numbers. "There are just so many great places to visit by bicycle on the Coast - great beaches; beautiful



waterways; scenic countryside; and lots of cafés and shops - and we want to help people get there in a healthy and environmentally friendly way, on their bicycles."

The series starts on Sunday, January 3, with a ride from Fisherman's Wharf, Woy Woy, starting at 8am.

Another ride will start from Fisherman's Wharf on Sunday, January 17.

Riders should be ready 10 minutes before the departure time for introductions and ride briefing.

Mr Corven said rides may be cancelled or postponed due to bad weather or ride leader illness.

Updates were available on the group's website at <https://www.ccbug.org.au> or by phone on 0414 538 977.

SOURCE:
Media release, 12 Dec 2020
Alan Corven, CCBUG

Umina Bunnies appoint coaches

Umina Bunnies Junior Rugby League Football Club has appointed its coaches for the coming season.

Under-7 coaches are Shane Sutherland and Shaun Norton.

Under-8 coaches are Chris Heap, Zac Ison and Ashton Carroll.

Under-9 coach is Jordan LeStrange, a new coach for the club.

Under-11 coach is Jake Morris.

Under-12 coach is Shannon Michie. Under-13 coach is Darren Phillips and under-14 coach is Jordan Moane.

Under-16 coach is Ken Dyer and under-17 coach is Matt Ison.

Under-13 girls coach is Glen Walsh and under-15 girls coach is Melissa LeStrange, both new coaches for the club.

Under-6, under-10, under-15 and under-17 Girls coaches are to be confirmed.

Registration for the 2021 season is now open.

The club held its presentation day for last season on Saturday, December 5.

SOURCE:
Social media, 1 Dec 2020
Umina Bunnies JRLFC

Gold and red point bridge winners

Brisbane Water Bridge Club has announced winners of recent gold and red point competitions.

The first three places in the gold point event for GNOT teams were: 1. Chris Hannan, Chris Williams, Jan Clarke, Alan Bustany. 2. Christine Hadaway, Robin Vaughan, David Snow, Martin Johnson. 3. Colin Speller, Matt Raj Mal, David Bowerman, Dasha Brandt

The first three places in red point events were as follows:

In Melbourne Cup Pairs, north-south winners were: 1. Robyn Scahill, Cathy Russell. 2. Blair Glass, Ian Newton. 3. Alan Jones, John Drew.

East-west winners were: 1.

Beryl Lowry, John Aldersley. 2. Mei-Hua Crawford, Marion Ellis. 3. Pamela De Lacy, Barry Davies.

In Remembrance Day Pairs (Open) competition, winners were: 1. Sylvia Foster, Jaan Ottmaa. 2. Christine Hadaway, Ann Snow. 3. Martin Johnson, Jurate Laisve.

In Remembrance Day Pairs (Novice) competition, winners were: 1. Jo Ampherlaw, Linda Cunningham. 2. Chris Spikesman, Graham Woof. 3. Caroline Nichols, Wendy Byrne.

In Halloween Pairs (Open) competition, winners were: 1. Jaan Ottmaa, Sylvia Foster. 2. David Snow, Martin Johnson. 3. Christine Hadaway, Robin Vaughan.

SOURCE:
Website, 8 Dec 2020
Brisbane Water Bridge Club

Netball team selected

The Woy Woy Peninsula Netball Association has announced its players selected for the 2021 Under-12s representative team.

They are: Emily Blacker, Elvira Forjan, Bronte Golby, Lily Harris, Lila Iveli, Harmony Mahon, Evie Marshall, Taylah Sankey, Bronte Scahill and Isabelle Smith.

Coaches will be Catherine Bailey and Carly Simpson.

SOURCE:
Social media, 3 Dec 2020
Sharon Bailey, WWPNA

Southern Spirit cricket results

Results from games played by Southern Spirit Cricket Club over the past week were:

First Grade: Southern Spirit 101 v The Entrance 2/110.

Second Grade: The Entrance 5/232dec v Southern Spirit 74.

Third Grade: Terrigal 7/108 (B McKellar 3/15) def Southern Spirit 9/107cc (AA Witten 34).

Male Youth League: Southern Spirit 4/210cc (AP Cutting 67*) def by Wyong 5/251cc.

Fourth Grade: Southern Spirit 0/189cc def by Terrigal 2/193.

Fifth Grade: Southern Spirit 127 (C Johnston 84) def by Lisarow Black 6/129 (C Johnston 2/14).

Under-16: Southern Spirit 8/118cc (JD Johnston 50*) def by Kincumber White 163 (K Warner

3/4). Under-12a: Southern Spirit 6/75cc def by Kincumber Red 2/114cc.

Under-14c: Brisbane Water 4/159cc def Southern Spirit 7/73cc.

Under-11: South Kincumber Stars 8/161cc (D Silverstone 2/5) def Southern Spirit 8/134cc.

Eighth Grade: Southern Spirit White 101 (T O'Brien 28*) def by Wyong 6/102 (M Lane 2/6).

Eighth Grade: Warnervale White 8/96cc (G Simon 2/10) def by Southern Spirit Purple 4/183cc (S Collins 50*).

Womens T20 A Grade: Northern Power 6/124cc (L Collins 3/16) def Southern Spirit 2/119cc (S Oman 30*, B Leggett 30*).

SOURCE:
Website, 13 Dec 2020
Southern Spirit Cricket Club