

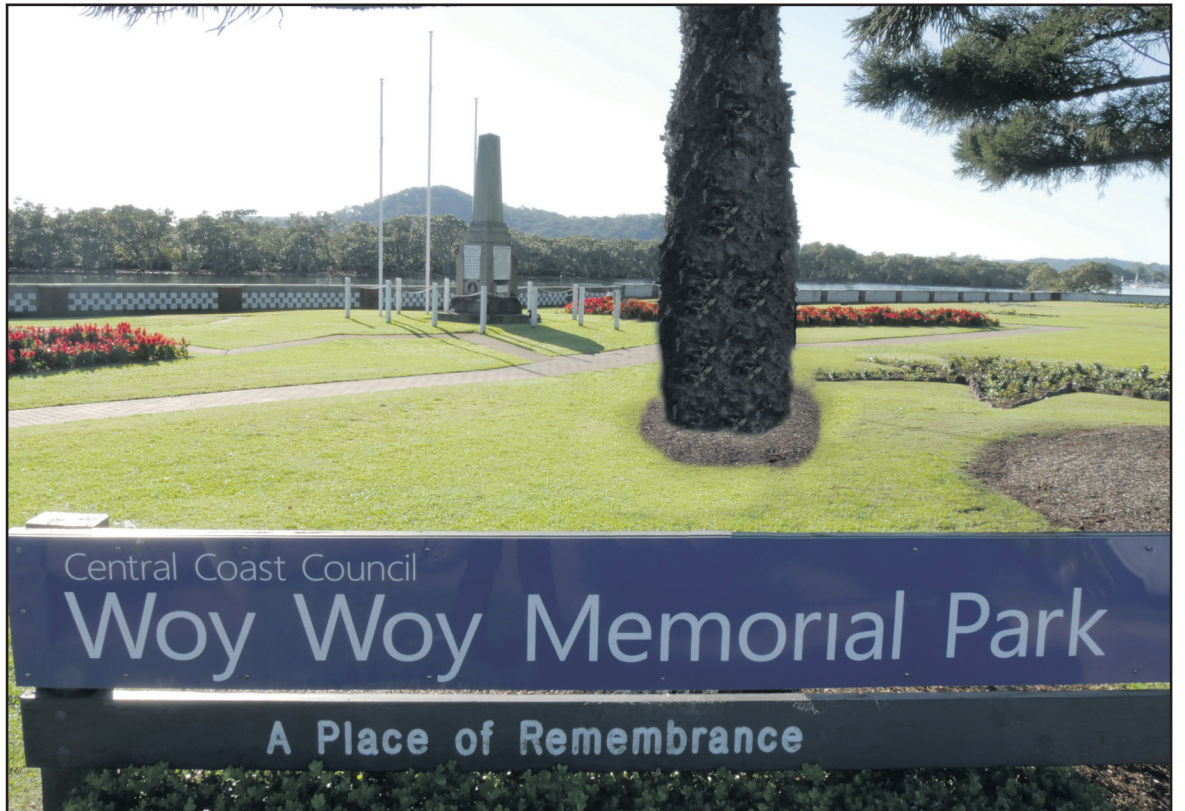
Peninsula News

COMMUNITY ACCESS

EDITION 498

REAL INDEPENDENT LOCAL NEWS

13 JULY 2020



War memorial to get a facelift

Woy Woy War Memorial is set for a facelift following an allocation of \$9600 from the NSW Government's Community War Memorials Fund.

Parliamentary Secretary for the Central Coast Mr Adam Crouch said conservation work to be undertaken on the memorial in Brick Wharf Rd, included cleaning and repairs to the spire, as well as

repairs to the marble inscription plaques.

"The Central Coast community lost many, many people to war and this sacrifice should never be forgotten," Mr Crouch said.

"Woy Woy War Memorial is a place where our community regularly pays tribute to the war effort and it also represents a part of our community's history."

Funding is available on a bi-

annual basis, with applications for the next round of funding closing on November 11.

SOURCE

Media release, 8 July 2020

Adam Crouch, Member for Terrigal

Crouch defends need for \$7 million roundabout

Mr Adam Crouch has defended the need for a \$7 million roundabout at the corner of Maitland Bay Dr and Picnic Pde, Ettalong, as the work began on July 6.

"This upgrade is absolutely necessary for this busy intersection, and when completed will massively ease congestion and improve access in and out of Ettalong," said Mr Crouch, Parliamentary Secretary for the Central Coast and Member for Terrigal.

He said Central Coast Council had issued a licence to Transport for NSW to occupy part of Ettalong Oval for 12 months during the intersection upgrade.

The northern section of Ettalong Oval, next to the Broken Bay Scout Group hall, would be fenced off and used for access by construction vehicles and plants, storage of materials, equipment, containers and shed, temporary fencing and

gating associated with the upgrade works, he said.

"The upgrade includes installing a new raised concrete roundabout, concrete medians, new shared pathways, a pedestrian refuge and on-road cycle lanes," Mr Crouch said.

"There are 19,000 motorists who travel through this intersection each day.

"It serves as the main link between the Peninsula and suburbs to the north of the Rip Bridge like Empire Bay and Kincumber.

Initial work involved utility relocations, setting up a temporary site compound on Picnic Pde, vegetation removal and installation of signs, and erosion and sediment control measures, he said.

Work would be carried out on weekdays and some night shifts would be required.

SOURCE

Media release, 6 July 2020

Parliamentary Secretary for the Central Coast, Adam Crouch



THIS ISSUE contains 45 articles - Read more news items for this issue at www.peninsulanews.info

Office: Level 2, 86-88 Mann St, Gosford - Phone: 4325 7369 - Mail: PO Box 1056, Gosford 2250 - E-mail: editorial@centralcoastnews.net - Website: www.coastcommunitynews.com.au

Peninsula News

COMMUNITY ACCESS

Peninsula News is a fortnightly community newspaper owned by The Peninsula's Own News Service Inc., an incorporated, non-profit association.

Its aims include providing a viable, non-partisan news medium and forum exclusively for the Peninsula and developing a sense of community on the Peninsula.

See www.peninsulanews.info for all editions published

Editor: Mark Snell

editor@peninsula.news

Commercial Operator: Ross Barry

CEO: Cec Bucello, for Central Coast Newspapers Pty Ltd

Design & Production:

Justin Stanley, Lucillia Eljuga

Journalists: Sue Murray, Haakon Barry, Marilyn Vale

Head of Distribution: Anthony Wagstaff

NEXT EDITION: PENINSULA NEWS 499

Deadline: July 23 **Publication date:** July 27

Email: editorial@centralcoastnews.net **Ph:** 4325 7369

Peninsula News focusses on post codes 2256 and 2257

Contributions

Letterstotheeditorandothercontributionsarewelcomedandshouldbeaddressedto: Peninsula News PO Box 1056, Gosford 2250. Contributions should be in Word format sent via email to: editorial@centralcoastnews.net, on disks or by handwritten letter if these facilities are not available to you. Contributions must include the date, your name, address and phone numbers. Name and Suburb will be published. Anonymous contributions will not be included. Submissions may be published in edited form.

All accepted contributions also appear on our website.

Legal responsibility for editing, printing and publishing of editorial content in Peninsula News

is taken by Mark Snell of Woy Woy, for Woy Woy Community Media Association Inc

Central Coast Newspapers Pty Ltd is the commercial operator of Peninsula News

ISSN 1839-9029 - Print Post Approved - 100002922

Printed by Spotpress Pty Ltd Marrickville

Editorial policy

The newspaper's editorial policy reflects a desire to reinforce the Peninsula's sense of community.

To qualify for publication, articles must have specific relevance to the Peninsula. For example, they must be about activities or events happening on the Peninsula or be organised by or involving Peninsula people.

The newspaper is not regional or national in nature, so regional or national issues will not be canvassed except as they affect the Peninsula.

Regional sports will only be covered from the perspective of Peninsula clubs. Regional plans will only be aired in the context of their ramifications for the Peninsula.

Peninsula News aims to be inclusive of as much of the Peninsula community as possible.

Readability

To ensure that the newspaper serves its purpose, it must be readable and represent the interests and activities of the community in its content.

Contributions to the paper are edited to consistent standards of readability. Guidelines are available for intending contributors.

All items will be dated. They must contain the name of the author to whom the contribution may be attributed, with their first name spelt out, along with their suburb or organisation. Anonymous contributions will not be accepted.

Forum letters

The Forum section provides the opportunity for readers to express their views on any aspect of Peninsula community life, with the aim of reflecting the community's diversity of opinion.

Nevertheless, letters may be edited for readability, including for length, spelling and grammar, and to avoid legal liability on the part of the newspaper, or they may be declined altogether.

Contributors are asked to keep their contributions to the matter at hand, and to focus on the issues and not abuse or insult others.

Other than in the case of holding public figures to account, criticism of others (as opposed to criticism of particular opinions) is unlikely to be published in the interests of facilitating the expression of a diversity of views.

All letter writers need to supply name, address and contact details. Only name and suburb will be published.

Contributors who do not wish the wording of their letter to be changed at all should make a note to this effect when submitting their letter. In some cases, this may result in the letter not being published.

Source lines

Peninsula News includes "source lines" at the end of each article which aim to provide readers with information about where and how we came across the information, so that they might judge for themselves the veracity of what they are reading.

It should not be assumed that the article is a verbatim reproduction of the source. Similarly, it should not be assumed that any reporter listed is necessarily responsible for writing the whole news item. Source lines are not by-lines.

Often articles come from a number of sources. They are edited for readability and reader interest and given different headings, and consequently can be expressed quite differently from the source material.

Peninsula News usually receives its information in three ways: It is sent to us by someone wanting to promote their activities; it is sent to us in response to our inquiries; or it comes from a newsletter or other document to which we have access.

Sometimes we may interview a person or report what they said at a meeting.

The following descriptions are used:

Media Release - unsolicited contributions. **Media Statement** - sent in response to our questions. **Website** or **Social Media** - information published online. **Newsletter** or **Report** - published in print or online. **Interview** or **Meeting** - statements recorded by a reporter.

Forum contributions may be: **Email** if sent electronically and **Letter** if written on paper.

Driest June, now dry July

Rainfall of 21.5mm was recorded on the Peninsula over the last three days of June.

This brought last month's total to 61.9mm, 106.1mm short of the monthly average of 168mm.

This made it the driest June in 16 years, according figures supplied by Mr Jim Morrison of Umina.

The first 10 days of July have also been dry, with only 6.5mm of rain being recorded.

The average rainfall for the month is 60mm.

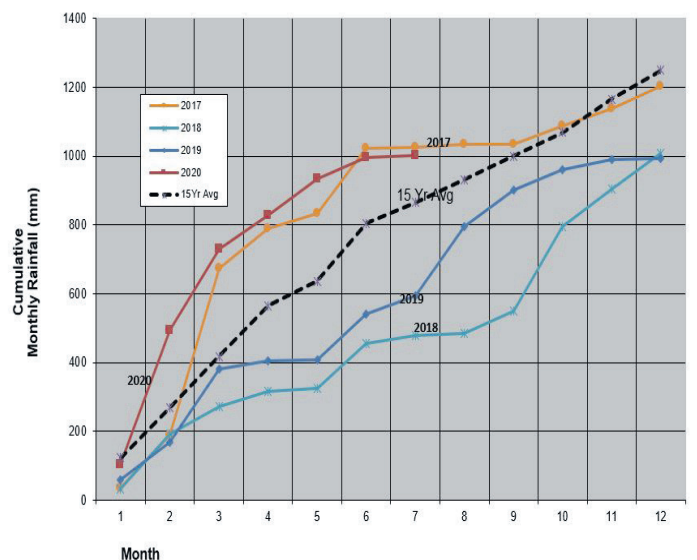
Only 28mm fell in the 14 days to July 10.

Rainfall for the first six months of the year totalled 996.2mm, 23.8 per cent above the half-year average of 805mm.

Spreadsheet, 10 Jul 2020

Jim Morrison, Umina

Cumulative Monthly Rainfall by Year



YOUR CHANCE TO WIN



Peninsula News would like to offer two lucky readers the chance to win a \$50 voucher to spend on the Coast's homegrown surf, skate and street wear brand drøm.

Drøm is celebrating the easing of COVID-19 restrictions and being able to welcome people back into their store at Chambers

Place, Woy Woy.

Brand Founder, Gary Berman, has been kept busy throughout the pandemic thanks to a great deal of support from the Central Coast community via drøm's online shop.

He's also just launched drøm's newest collection, the colours of drøm, a new range of bright, eye-catching essentials that'll bring colour to any Coasties wardrobe.

For your chance to win write your full name, address, email and daytime telephone number on the back of an envelope and mail it to Peninsula News drøm Competition, PO Box 1056, Gosford 2250, before 5pm on July 23.

The winner of the Porters Paint Competition was Beverley Hardesty of Woy Woy.

Prize winners may be required to pick up their prize from our Gosford office. Entries may be passed on to prize providers for marketing purposes.

Get the most out of your advertising dollar



Central Coast NEWSPAPERS

Advertise in a Central Coast Newspaper for maximum exposure at a realistic price. Multiple booking and multiple publication discounts apply to all display advertisements. Enjoy the benefits of being in a well-read publication with relevant news content. Contact us now for more information or visit our website.



Office: Level 2, 86-88 Mann St, Gosford - **Phone:** 4325 7369
Mail: PO Box 1056, Gosford 2250 - editorial@centralcoastnews.net
www.coastcommunitynews.com.au

Community group seeks upgrade to crossing

Umina Community Group is calling for the pedestrian crossing in Mt Ettalong Rd at Etta St to be upgraded.

A petition is being circulating throughout Umina seeking support from residents.

Group secretary Mr Peter Springett said "There is an island in the middle of the road, however, it is small and often congested."

He said there was no alternative pedestrian access point for Umina South residents in that area to reach the beach, the recreation precinct and Umina Beach Public School.

"This crossing is also used as the main access for Umina South pedestrians and bike riders to go to West St shops," he said.

"It's commonly used by adults, children, dog walkers, bike riders, parents with babies in prams and elderly people.

"The speed limit is 60kmh but this is too fast and it is dangerous because cars come along there very quickly."

Mr Springett said there was car traffic along Mt Ettalong Rd all times of the day, but it was particularly busy during peak times such as school drop off and pick up, weekends and summer holidays.

This road provides the only access to Pearl Beach and Patronga.

"The frequency of the cars



Member for Gosford Ms Liesl Tesch meets with members of Umina Community Group

means pedestrians have to cross one lane of traffic, stop on the island and wait until the other land of traffic is clear.

"If you have bikes or prams it is particularly dangerous and not everyone can fit in the space.

"Young kids do not have the spatial awareness to realise they are on the island but the back of their bike is still hanging out on the other side of the road.

"The island is nowhere near wide enough, it's only about the width of an adult pushbike, so imagine a mum with a pram and another child in tow, or a couple of

kids with bikes, trying to manage in that space with cars whizzing by on both sides.

"There is only about five metres of footpath on the west side of Mt Ettalong Rd and then it finishes forcing pedestrians to walk on the road.

"Cars turning may not see the pedestrians until too late."

Mr Springett said the footpath on the other side of Mt Ettalong Rd was appropriate.

"This has been a concern for a while.

"Now that we've had some success over fixing another

pedestrian safety issue in Melbourne Ave, we have started lobbying Members of Parliament, local councillors and Central Coast Council to make them aware of this dangerous crossing and requesting they urgently do something to improve safety there.

Members of Umina Community Group met on-site with Member for Gosford Ms Liesl Tesch.

Mr Springett said Cr Chris Holstein and Cr Troy Marquart were unable to attend and the group was looking forward to hearing their feedback.

"Liesl had a few ideas but some

of them had a longer timeframe than we'd like.

"We want something quicker than that – some sort of warning lights.

"There is room on both sides of the road to widen it and then the pedestrian island can be made wider," Mr Springett said.

"It's early stages, but at least we've got people listening," Mr Springett said.

SOURCE

Media release, 30 May 2020

Interview (Sue Murray), 7 Jul 2020

Peter Springett, Umina

Community Group

ASBESTOS COMPENSATION

For more than 25 years, Alex Stuart, solicitor, has successfully represented hundreds of people suffering:

MESOTHELIOMA & ASBESTOSIS

Contact Alex Stuart of Stuart Lawyers for an obligation-free case assessment.

Home visits available, or you can see us in our Sydney office. Alternatively, given the current impact of the Coronavirus, we offer telephone assessments and "virtual" visits.

FREECALL: 1800 001 135 or (02) 8920 8446

Specialising in asbestos litigation

www.stuartlawyers.com.au

Bays group has second attempt to elect committee

The Bays Community Group will hold a Special General Meeting on July 29, after the group's annual meeting on June 24 failed to elect a president, vice-president or secretary.

President Ms Cathy Gleeson resigned at the meeting.

No nominations were received for the positions.

Previous president Mr Bob Puffett was reported in the group's newsletter saying: "The Bays is not just the Hall."

"It is a collection of some 550 homes, their residents and hopes for a wonderful lifestyle that is healthy, wealthy and wise."

"It is a focal point of the Bays residents."

"It is a collective of community ideas, a public place for residents in times of hardship such as bushfires."

Newsletter editor Ms Brooke Hemphill said: "The Bays Community Group is a conduit through its members and executive

to Council, State and Federal Government and provides an inclusive representation to various businesses and organisations."

"The Hall in Woy Woy Bay and the land it stands on is owned by the community group, not the council."

"It is available for resident functions such as weddings,

birthdays and social events."

"We urge as many of our residents to attend and nominate for the available positions on July 29 so we can vote on a new committee and continue to foster the sense of community that drew so many of us to this area."

Newsletter, 3 Jul 2020
Brooke Hemphill, Bays Community Group

ADVERTISEMENT



Community Environment Network

It Takes A Village



is originally an African proverb. We have all heard it and understand that raising children and the next generation requires multiple members of the community, such as extended family, teachers, mentors, surrogate family members and friends to support and help them develop. Parents are not enough, children need mentors, teachers, surrogate aunts, uncles,

grandparents, and go-to people to understand their place in the community, their role and identity.

The recent COVID-19 restrictions have separated us from these go-to people putting all the weight onto the parent/s. This creates quite a bit of stress on members of our community, in which everyone has been impacted.

If we look at it from the perspective of the next generation, predominately Youth, social connections with friends and peers was not available during the restrictions. So, the opportunity to share their experiences and grievances was lost during this period. Our health and wellbeing as social creatures are essential for living fully functional connected lives.

Our CEN Youth group that I have had the privilege to develop have shared with me the frustrations and suffering young people are facing. As a middle-aged woman I have built the resilience and skills to manage the social isolation and find creative ways to connect with friends and family. This opportunity may not be readily accessible to many Youth.

Our CEN Youth group have been catching up regularly online touching base and sharing experiences with each other, acknowledging that they are experiencing the same suffering not being able to connect face to face with their friends and family. We are also planning a short hike (following the restriction guidelines) with a team building exercise for our next catch up.

It is important we try to understand how it must feel from their perspective to see the changes that are unfolding as a new system develops, hence why Youth must be heard and supported as they will be inheriting this future we have already started to create.

Community is Everything
Hale Adasal CEN Chair

WILDPLANT COMMUNITY NURSERY

Our plant sales are held on the first Saturday of each month

Saturday 1st August 9am-12pm

CEN Office, off Brush Road, Ourimbah

Come along to our plant sale at the CEN Office, Ourimbah, buy a few local native plants and chat about local environment issues.

We have a range of local native plants available including ground covers and herbs, shrubs and trees, bush food, bird attracting, native bee attracting, frog friendly and screen plants. Cash and EFTPOS.



SWIFT PARROT TALK AND WALK – BATEAU BAY



Saturday, 25th July – bookings essential - 10am-12pm

Join in on a guided bird walk, learn how to monitor birds and become a volunteer birdwatcher and contribute data.

Bookings essential

Plant a Nectar Food Forest

Saturday 8th August - 9am-12pm

EDSACC, Bateau Bay

Information stalls, guided bird walk,

tree planting, bbq.

www.cen.org.au/events

contact: Nicole Heta 4349 4756

habitatforwildlife@cen.org.au

POSTITIONS AVAILABLE

CEN Community Support Officer

(Paid Casual Position 18 hours/week)

CEN requires a Community Support Officer to assist in responding to key issues and advocacy on matters that contribute to achieving ecologically sustainable development.

Full position description and selection criteria can be found at <https://www.cen.org.au/cen-homepage/opportunities/jobs>

Applications close 5pm, Friday 17th July, 2020

CEN Volunteer positions available at our Office - Ourimbah

We are looking for reception and administration volunteers 2-15 hrs a week during CEN core office hours of 9:30 am to 2:30 pm. Please email Karen at karen.oneill@cen.org.au for more information or to apply. Closes 30th July.

CENTRAL COAST MARINE DISCOVERY CENTRE

Good news if you are looking for something fun to do in the school holidays. We are opening especially for NSW School Holiday 4 July to 19 July 2020. There will be limited number of visitors for three 1.5 hour sessions per day (10am, 12 and 2pm) and sessions must be pre-booked and pre-paid. Go to www.ccmcdc.org.au to find out more details and to book.

The current extensions/renovations will be on hold during the holidays and the CCMDC will reopen in September/October when our renovations are completed.

Central Coast Marine Discovery Centre Venue Manager

(paid position 38 hours/week, 2 year contract)

The CCMDC is looking for a full time venue manager to manage the day to day operations of the Central Coast Marine Discovery Centre in co-operation with the requirements of the onsite cafe, primary and secondary schools, tourists, visitors, volunteers, suppliers and CCMDC board members.

For a full position description and to apply

please visit <https://www.seek.com.au/job/50092622>

Applications close July 14, 2020



The Community Environment Network (CEN) is an alliance of individuals and groups that work for ecologically sustainable development.

Support CEN - Become a member - Volunteer - Make a donation

www.cen.org.au Ph: 4349 4756



Residents call for Umina Mall buildings to be razed

A group of Umina residents is appealing to Central Coast Council to urgently remedy the “unsightly mess” surrounding Umina Mall which was destroyed by fire almost 18 months ago.

“Is it not time to act on the issue of civic pride?” Gary and Kerry Yates said in a letter to Council.

The Yates said they were speaking on behalf of an informal group of concerned private citizens

with the opinion that it was long past time that the mess was sorted out.

“We are aware that council will arrange for pick-up of the rubbish.

“However, our point is that this whole situation should be addressed by the owner – that the site be razed and cleared and then contained securely.

“At least then, the delay in new construction does not constitute such an offensive and ugly eyesore in everyone else’s world.

“We’re just asking for some civic pride to be enforced.

“While understanding the restrictions of budgets and bylaws, surely it is possible, even mandatory, that Council insist on a decent level of tidiness and aesthetics from ratepayers regarding their properties, in particular where there is an added health or safety issue.

“In particular, the area which encompasses the site of what was Umina Mall and the surrounding

blocks, both vacant and with dilapidated buildings, should surely be razed by now, at the very least, to eliminate its current use by some homeless people and vandals and rubbish dumpers.

“This is an ongoing issue which should be being addressed by the owners.”

In their letter to Council, the Yates asked why the owner was not being pushed to tidy up this dangerous, ugly mess and then ensure, by way of demolition, that

this stays tidy until construction begins.

“Surely Council has authority to enforce such action.”

Central Coast Council declined to comment on inquiries about this issue and no response was received to requests for information from Mr Craig Laundry, of Laundry Exhibition, the property owner.

SOURCE
Media release, 6 Jul 2020
Gary and Kerry Yates, Umina

DESIGNER COMFORT

4324 3639

NOW LOCATED AT SHOP 4A “PRIME WEST”

CENTRE, 356 MANNS RD WEST GOSFORD

OPPOSITE STOCKYARD PLACE

L A Z B O Y
Live life Comfortably.

IMG
COMFORT

NORDIC STUDIO



Brando Lift Chair
Fabric from **\$1199**



Jade Recliner - with lift option
Fabric from **\$1199**



Zeus Lift Fabric from **\$2290**
185kg capacity!



Loki Recliner
Leather from **\$999**



Harbortown Lift Chair
Fabric from **\$999**



stor Lift Dual Motor Fabric
from **\$1999**



Devon Lift Fabric
from **\$1399**



Ascot Lift Fabric
from **\$1099**

LIMITED OFFER **\$1599** Save **\$1380**

NORDIC 60 LARGE CHAIR AND OTTOMAN



PRIME BLACK
LEATHER
OAK
STAR WOOD



PRIME LATE
LEATHER
DARK BROWN
STAR WOOD



PRIME CLASS
LEATHER
LIGHT ASH
STAR WOOD



PRIME GREY
LEATHER
OAK
STAR WOOD

SALE

ALL STOCK REDUCED BY 25% to 50% EVERYTHING REDUCED!!!

Roadwork funding for Hillview St and North Burge Rd

Road work in Hillview St and North Burge Rd, Woy Woy, will receive a total of more than \$250,000 in State Government funding, according to Member for Terrigal Mr Adam Crouch.

Mr Crouch said \$267,750 from

the NSW Government's Fixing Local Roads program would go to upgrades in Hillview St of \$81,000 and North Burge Rd, costing \$186,750.

He said the funding was targeted at small projects that would make a big difference in a short time.

"Together with the Federal

Government, the NSW government has accelerated funding to get more projects underway faster," Mr Crouch said.

"Central Coast Council will deliver each project and this will help drive local job opportunities."

SOURCE:

Media release, 6 July 2020
Adam Crouch, Member for Terrigal

Council introduces tree register nomination fee

Central Coast Council has introduced a charge of \$250 for nominating a tree for the Council's Significant Tree Register.

Previously, there was no charge for nominations to the register, which could be made by community members.

Trees accepted onto the register received protection under Council planning provisions.

The new fee was set with the adoption of Council fees and charges for the 2020-21 financial year and at a special meeting on June 29.

Cr Louise Greenaway asked who paid the fee and called it an odd charge.

Planning director Mr Scott Cox said the person suggesting a tree be registered would pay the fee.

Under questioning, he was not sure what the fee had been in the past and took the question on notice.

Cr Greenaway said Council had resolved in August 2019 to expand the Significant Tree Register into the former Wyong area and to minimise the cost to ratepayers.

SOURCE:

Central Coast Council
agenda 3.1, 29 Jun 2020

Free wifi at Woy Woy station

Free wi-fi is now available at Woy Woy and Wondabyne, as well as 17 other stations between on the rail journey from Wyong to Hornsby, according to Federal Member for Robertson Ms Lucy Wicks.

The two stations were not included in a previous media release issued by Ms Wicks on June 16.

She said the 68km rail corridor was a vital link for many and significant black spots along the

train line had been causing calls to drop out.

"This project will provide new connectivity and continuous mobile coverage along the trip allowing people to be more productive on their journey by staying connected to work or friends and family," Wicks said.

Work is still being developed to overcome blackspots while travelling the rail line away from the train stations.

SOURCE:

Media release, 26 Jun 2020
Lucy Wicks, Member for Robertson



2 Weeks Free Respite Care*

All Room Prices Reduced!

Book a tour today!

1800 246 637 | www.chomes.com.au



Everyone needs a break sometimes.

Christadelphian Aged Care is offering up to two weeks free respite care at **Chamberlain Gardens Aged Care in Wyoming***

Our respite residents enjoy full residential and nursing care, along with our lifestyle, therapy, dementia and emotional well-being programs.

*Conditions apply, please call 1800 246 637 or visit www.chomes.com.au for more details.

Chamberlain Gardens
53-67 Chamberlain Rd, Wyoming

CHRISTADELPHIAN
AGED CARE



If you're reading this, so are 160,000 other people



Imagine if it was a message about your business.

Call 4325 7369

or see the website
www.coastcommunitynews.com.au



Photo: Justin Stanley

Coastal open space retained in planning statement

The Coastal Open Space System has been recognized in the interim Local Strategic Planning Statement adopted by Central Coast Council.

Council met a NSW Government deadline with one day to spare when it adopted its first Statement at its June 29 meeting.

Last minute changes by deputy mayor Cr Jane Smith included the protection and expansion of

the Coastal Open Space System in addition to a Biodiversity Strategy that would map, protect, and cherish natural areas and ecosystems.

Under her changes, views to the ridgelines would be available from public spaces in Gosford.

The amendments included reviewing planning controls to require high standards of design and construction including energy and water efficiency, liveability

measures, waste minimisation and emissions reduction.

The document is only an interim Statement which will be reviewed within three months with the final statement expected to be adopted by the end of November.

Mayor Cr Lisa Matthews said: "The Plan aims to balance the social, environmental and economic outcomes for the region over the next 20 years by directing our growth to existing centres,

along growth corridors and within planned precincts.

"The Plan is an iterative document that will be able to be reviewed and improved as circumstances and community aspirations change over time."

Consultation on the draft Statement occurred through online webinars and was placed online for public exhibition with more than 160 submissions received.

Among changes signaled,

priority would be given to ensure neighborhood "pocket parks" and community reserves were supported and accessible to local communities.

More work was earmarked to develop the town centre hierarchy.

SOURCE

**Central Coast Council
agenda 2.1, 29 Jun 2020
Media release, 30 Jun 2020
Lisa Matthews, Central
Coast Council**



Peace of mind with pre-paid funerals.

By arranging the finances and details of a funeral today, you relieve the burden for your loved ones tomorrow. Removing the financial pressure can be a way to look after your family when they need support most.

By pre-planning a funeral with Creightons you can feel confident that you have selected the most established, trusted and respected funeral service.

Assisting families for over 170 years.

Arrange and pay for a funeral today.

Central Coast 4324 1533 | Sydney Region 9488 9265 | Hunter Region 4991 5556

www.creightonsfuneralservice.com.au

Volunteer-run club aims to raise \$100,000

Hardys Bay Club aims to raise \$100,000 to resume business as a volunteer-run club after being forced to close its doors on March 23 due to Covid-19.

The club had originally launched an online campaign to raise this amount, but has since reduced the online target to \$33,000.

The club has been pledged loans totalling \$35,000 from individual members.

It has also applied for Government assistance for small businesses affected by Covid-19 for a further \$32,000.

"This funding is a great start, but we need to raise more to cover the club's start-up costs and the

unexpected repairs to equipment following closure," said community liaison officer Ms Treveen Brown.

"We also have plans for an exclusive club benefit concerts which we know will be well supported but we need to wait until further lifting of the Covid-19 social distancing restrictions.

"This will be a volunteer run

club," Ms Brown said.

The committee is looking for anyone involved in maintenance, painting, cleaning, guttering, as well as musicians or anyone with a Responsible Service of Alcohol registration.

Mrs Brown said she had called on Petersham Bowling Club for ideas and advice.

"They are also a community-run, no-pokies club.

"They have just been doing it for a few years and they have learned a lot along the way.

"It is very much volunteer-run and we hope we can work closely with them in the future."

SOURCE

**Social media, 9 Jul 2020
Treveen Brown, Hardys Bay Club**

Woy Woy tip fees help fund Council solar power project

The benefits of carbon pricing will be felt by Central Coast Council more than six years after it was repealed by the Federal Government.

Gate fees collected at Woy Woy tip from 2012 to 2014, which included carbon pricing, have helped fund a solar energy project for the Council.

Council will install 3500 rooftop solar panels generating 1.2 megawatts of power from 28 Council buildings.

This is equivalent to the electricity used by 230 local homes, according to mayor Cr Lisa Matthews.

The project is expected to be completed by the end of the year and to save the Council about

\$220,000 annually in energy costs

Cr Matthews said project will see energy consumption reduced by about 1.4 gigawatt-hours annually and reduce Council's carbon footprint by the equivalent of 1100 tonnes of carbon dioxide per annum.

Cr Matthews said the project delivered both environmental and financial benefits.

"It is rewarding to see a project underway which not only reduces Council expenses but also incorporates renewable energy for the conservation, protection and remediation of our environment."

SOURCE:

**Media release, 7 Jul 2020
Lisa Matthews, Central Coast Council**

Free same day delivery!

FREE TAKE AWAY

LEGENDARY DISCOUNTS FOR SENIORS

PAY LESS FOR CASH

FREE AIR MATTRESS WITH EVERY PURCHASE

NIK & JANE'S

FURNITURE AND BEDDING EXPRESS





**POWERED
ADJUSTABLE BED
AND MATTRESS
PACKAGES FROM
\$1999
MOBILITY
APPROVED**







**POWERED RECLINE
/LIFT CHAIRS
from \$499**

**MOBILITY
APPROVED**



**GST
FREE**

FREE Delivery - FREE Installation - FREE Take Away

**BIG DEALS
FOR SENIORS!**

**Shop 11, Karalta Plaza,
Karalta Lane, Erina - 4365 0997
www.nikandjanes.com.au**



**GET A HIGH SCORE
FROM YOUR DOGS.**

Walk and play with them.
Don't ever chain them.

TODD MCKENNEY
FOR **PETA**
AUSTRALIA

Harwin reinstated as State Government Minister

Councillors to vote on own pay rise

Central Coast Councillors will vote tonight (Monday, July 13) on whether to give themselves a pay rise.

Council has been re-categorised as a Major Strategic Area and with that comes an increase in the minimum and maximum pay rates Council can adopt as set by the Local Government Remuneration Tribunal.

The Tribunal ruled no pay increases this year but the re-categorisation has put Council on par with Newcastle for remuneration, rather than with Lake Macquarie.

Previously, the maximum

remuneration to a Central Coast councillor was \$30,410 per year.

That has now risen to \$32,040.

The Mayoral maximum fee moves from \$88,600 to \$99,800.

The full increase would mean an adjustment to the budget of an additional \$35,650.

Council staff have recommended councillors accept the maximum increase, arguing that it was considered appropriate for a Council the size of the Central Coast to remunerate councillors at the higher level.

SOURCE:
Central Coast Council
agenda 3.4, 13 Jul 2020

Mr Don Harwin has been reinstated as State Minister for the Public Service and Employee Relations, Aboriginal Affairs, and the Arts.

Mr Harwin resigned from Cabinet on April 10 after being fined \$1000 for self-isolating at his holiday home in Pearl Beach, instead of his primary residence in Sydney.

Mr Harwin said he would contest the fine, but the Director of Public Prosecutions withdrew the matter in Gosford Local Court on July 3, and the case was dismissed.

Premier Ms Gladys Berejiklian described the "court decision" as "clearing Don Harwin of breaching Covid-19 restrictions in April 2020".

She said he would be reinstated to his former positions in the NSW cabinet.

"Mr Harwin's decision to resign from cabinet was appropriate when he received an infringement notice in April 2020, but now that he has been cleared, it is appropriate that he return to cabinet.

"Mr Harwin has always assured me that he did not break the rules.

"Following media reports about Mr Harwin's property disclosures, the Department of Premier and Cabinet has confirmed that Mr Harwin made the relevant



disclosures appropriately," she said.

At the time, Member for Gosford Ms Liesl Tesch and Labor's Shadow Arts Minister Mr Walt Second were reported in Peninsula News criticising Mr Harwin's actions.

Mr Second said: "We are all in this together and we have to stick to the strict rules to protect the community.

"Social distancing is about saving lives; Mr Harwin is not above the law."

The same day, Parliamentary Secretary for the Central Coast Mr Adam Crouch said he welcomed confirmation from NSW Police Commissioner Mr Mick Fuller that he would investigate the matter.

"The message is simple and it applies to everyone, no matter what your job is," Mr Crouch said.

"Go home and stay home."

Ms Berejiklian said at the time that she felt "very passionately" about protecting the State's citizens.

"I regret and apologise to everybody that someone from my team undertook this activity and the perception is not good.

"I am deeply disappointed."

Mr Harwin said in April: "At all times I have sought to act in accordance with public health orders and I sought advice that my living arrangements complied with those orders.

"I remain confident that I have acted in accordance with those orders.

"I know, however, that perception is just as important during these times."

SOURCE:
Media release, 3 July 2020
Gladys Berejiklian, NSW Premier

Lifestyle

MATTRESS & BEDDING

ECHO LIFT CHAIR

Vibrating Massage
Heated Lumbar
Battery Back-up
Up To 5yr Warranty
reduced to

\$1499



VISTA LIFT CHAIR

Up To 5yr Warranty
Battery back-Up
reduced to

\$1299



MORE THAN JUST A BED



**A.H.Beard KING SINGLE mattress
with adjustable base combo**

FROM \$2,399

Also available in Split King, Queen, Double
AVAILABLE ON NO INTEREST EVER (TAP)

SALE ON NOW

Bodycare Range

Single **\$299**

King Single **\$449**

Double **\$499**

Queen **\$599**

10 Year Guarantee



Available in a range of colours

103 BLACKWALL ROAD WOY WOY 4344 6969
OPPOSITE THE LEAGUES CLUB - OPEN 6 DAYS

*Terms and conditions apply



Rotary club holds virtual dog show

The Rotary Club of Brisbane Water will hold a virtual Peninsula Pooch Parade between July 17 and August 14.

"A virtual dog show is where owners submit pictures of their pets," said organiser Ms Di Bartok. "Local vets will judge in

five categories: Best Dressed, Funniest, Cutest, Saddest and Smallest.

"Small prizes will be awarded and the entry fee of \$5 will go towards various Rotary projects."

Ms Bartok said the aim was to break the boredom of lockdown and to have some fun with the

canine members of the Peninsula community.

Entries will be accepted on the club's www.virtualdogshow.org website.

Source:
Media release, 3 Jul 2020,
Di Bartok, Rotary Club
of Brisbane Water

Opposition leader joins Tesch in preschool call

State Opposition Leader Ms Jodi McKay and Shadow Minister for Central Coast Mr David Harris have joined Member for Gosford Ms Liesl Tesch at Woy Woy Peninsula Community Childcare to call for an extension of free childcare.

Ms Tesch said free preschool services would end in September.

"The September cut-off for JobKeeper and JobSeeker is looming," she said.

"Family budgets are under enormous pressure and the government should be doing everything it can to cushion the blow and help parents to get back to work."

However, Parliamentary

Secretary Central Coast Mr Adam Crouch said: "The NSW Government moved quickly at the beginning of Covid-19 to support council-run centres that were missed by JobKeeper and also made additional funding available to State-funded community preschools."

"Some community and mobile preschool providers have not yet registered for access to this additional funding and are encouraged to do so to receive Term 3 payments from the NSW Government."

SOURCE
Media release, 25 Jun 2020
Jodi McKay, NSW
Opposition Leader
Media statement, 1 Jul 2020
Adam Crouch, Parliamentary
Secretary Central Coast

ADVERTISEMENT



Cllr Jane Smith
Independent
Deputy Mayor
Central Coast Council

Local Planning Panel - State government changes the rules

In November 2019, Minister for Planning, Rob Stokes, gave a direction that Central Coast Council must constitute a Local Planning Panel (LPP).

This seemed to be the last step in the State government effectively taking planning powers away from our community and our Council. Central Coast Council has consistently opposed moves by the State government to force a local planning panel on our region.

LPPs were previously called IHAPS (Independent Hearing and Assessment Panels) and introduced in Sydney and Wollongong only. In 2018, the former Minister for Planning, Anthony Roberts, commissioned a review of LPPs. One of the recommendations was to consider introducing a panel for the Central Coast and Newcastle.

Both the Mayor of Newcastle and myself attended a meeting with staff from Minister Stoke's office to demonstrate that a LPP was not needed - that both areas were meeting targets set by the State government in terms of developments. In spite of this the NSW government forced a planning panel on the

Central Coast (only). I am confident that the individuals on the LPP are well qualified to carry out their functions, however they are not best placed to represent the interests of our community and are not accountable to our residents.

Planning is of fundamental importance to our future. It shapes our communities and places - it determines where we live and work, infrastructure needs, transport, open space, natural areas and facilities. Decisions, both large and small, can have an impact.

Central Coast Council constituted a LPP on 11 May 2020 as required. The LPP had its first meeting on 11 June. The NSW Government is now making changes to the way Local Planning Panels work.

The changes commence on 1 August and are designed to speed up panel determinations including:

- reducing the need to conduct public panel meetings for some matters
- obliging panel chairs to reduce panel deferrals and assessment timeframes
- allowing chairs to bring forward determination on DAs that are experiencing "unreasonable delays"

In our Community - Youth Connections

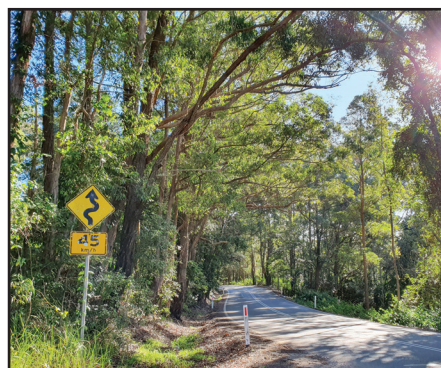
I was pleased to represent the Mayor on 23 June at the launch of new branding of Youth Connections.

Youth Connections has been operating for 25 years on the Central Coast as a youth transition and disability service provider. To support youth through periods of transition they offer services in education, training, job readiness, employment, housing, and skills for living. Congratulations on 25 years and the new branding!



L to R: Claudia Devlin, CEO Youth Connections, Deputy Mayor Jane Smith, Peter Alward, Deputy Chair Youth Connections

Scenic Places on the Central Coast



Visit my website to share your thoughts

There are many beautiful places on the Central Coast. Lake Macquarie Council has "Scenic Management Guidelines" as a tool for decision making.

The guidelines recognise that without adequate management of scenic and landscape values these values can be eroded or lost.

- Are scenic and landscape values important on the Central Coast?
- Should we have guidelines for decision making?
- What are some of the scenic or landscape values that are important to you?... and examples?

To find out what Council has on exhibition - visit their page:

www.yourvoiceourcoast.com

For more information or to subscribe to my eNews

www.ccnewindependents.com

Central Coast New Independents

Disclaimer - Views expressed in these articles are my own and do not represent the views of Council



Maurie and Margaret Ellis on their wedding day



Maurie with his son Mark



Advertisement

Maurie Ellis dies: 60 years on the Peninsula

Long-time Peninsula resident Morsley "Maurie" Ellis died on Monday, June 15, at Peninsula Village.

His son, Mr Mark Ellis, said his father was born in 1936 at Condobolin.

"He was working at a hotel in Parramatta when he took up a role at the Old Pub in Brickwharf Rd in 1960, the same year electrification of the rail line came to Woy Woy.

"Umina marching girl Margaret Hogbin was part of the celebration parade.

"She worked in the fish and chip shop opposite the pub and things went from there.

"They were married in 1962, bought their land in Woy Woy in 1963 and raised three sons on the Peninsula.

"They would have been married 58 years this year and lived in the same house built by my grandfather who lived in Umina.

"Morsley became an active member of the community.

"In 1968, he joined Lodge Morning Star that met at Woy Woy Masonic building and later joined the Woy Woy Lions Club in the mid 1970s, becoming president of the club.

"He was involved in many community projects including installing the initial lighting of Woy Woy Lions Park, where the Lions Club ran the yearly Easter carnival in the 1980's.

"He retired in 1996 still living in Woy Woy.

"He then travelled Australia and the world with his wife, while maintaining his interest in Masonry as it moved from Woy Woy into Gosford.

"Morsley's memorial service was well attended at Palmdale memorial park on June 25."

Morsley Ellis is survived by his wife Margaret, sons Morsley, Ken and Mark, and grandchildren Jacob, Marcus, Thomas and Heidi.

SOURCE:

Media release, 29 June 2020
Mark Ellis, Woy Woy

We all need to work together to prevent the spread of Coronavirus.



The Australian Government has launched a voluntary app, COVIDSafe, to help health officials notify people who may have been exposed to Coronavirus.

The more people who download this important public health app, the safer they and their family will be, the safer our community will be, and the sooner we can get back to business and back to enjoying life.

To protect yourself, your family and our community, download the COVIDSafe app now.

Scan this code on your smartphone to go directly to your app store and download the app.



LUCY WICKS MP
FEDERAL MEMBER FOR **ROBERTSON**

69 Central Coast Highway, West Gosford NSW 2250 02 4322 2400

lucy.wicks.mp@aph.gov.au lucywicks.com.au LucyWicksMP

New Rotary club keeps most of board for second year

The Rotary Club of Brisbane Water has celebrated its first 12 months of operation and has decided to keep most of its board and committee chairs for its second year.

Returning president Mr Peter Mote said two changes were made at the official "changeover" meeting on July 2.

Ms Marijke Greenway would become assistant treasurer and Mr Martyn King Fellowship and Outings Chair.

"We will have a full year despite the current health emergency and the Board will be working on the Operational plan in the first month," Mr Mote said.

He thanked those who served on the board and as committee chairs during the club's first year "for all their help, friendship and support in getting us airborne and doing so much in such a short time".

"I would never have been able

to do the job as your Charter President were it not for the unstinting help, advice and support of my darling Jayne.

"The work that I am most proud of is the help we have been able to give to the Youth Cottages and Neleh House in its efforts with the scourge of domestic violence.

"Internationally, we have been able to give support to Sue O'Neill in her fantastic work with Divine Mercy School in Uganda."

Mr Mote listed the club's activities over the year.

It helped with the collection of food for Coast Shelter.

It raised \$800 in charity donations on Red Carpet Day.

It helped with the purchase of a car and associated services for a Neleh House resident with a disabled child, using a \$10,000 Dick Smith grant.

It donated food to local fire service people.

It took part in the Envision

bottle top collection used to make prosthetic limbs.

It shipped educational books from Woy Woy South Public School library to Uganda, Papua New Guinea, The Philippines, Fiji and outback stations in Australia.

It received a Central Coast Council grant for sound and projection equipment costing \$3023.

It's Titanic fundraising dinner sold 100 tickets at \$100 each.

The club took part in the We Care Connect program by donating clothing, toys, prams and beds to disadvantaged children.

It became a sister club of the Wendover and District club in the UK.

The Rotary Club was runner-up in the Volunteer Team of the Year awards, organised by Volunteering Central Coast.

SOURCE:

Newsletter, 2 July 2020
Peter Mote, Rotary Club of Brisbane Water

Bays bushcare group resumes

The Bays Bush Care Group resumed on Sunday, July 12, after a break due to coronavirus restrictions.

The group is currently working on the bushland reserve on Phegans Bay Rd near the lower end of Raymond Rd and opposite the Phegans Bay reserve.

The group was formed under the Council landcare program after a submission from The Bays Community Group.

Council provides tools, gloves and the guidance of an expert in

bush care.

Numbers will be limited to 10 people at any session.

Any volunteers with cold or flu-like symptoms are asked to stay at home.

Council provides a Covid-19 awareness and work practices talk at the start of the session.

For further information, contact landcare officer Mr Ben Feltham at Central Coast Council on 4350 5106.

Newsletter, 3 Jul 2020
The Bays Community Group



URGENT NEED FOR CARERS OF SCHOOL AGED CHILDREN

Help a child in your community. Become a foster carer.

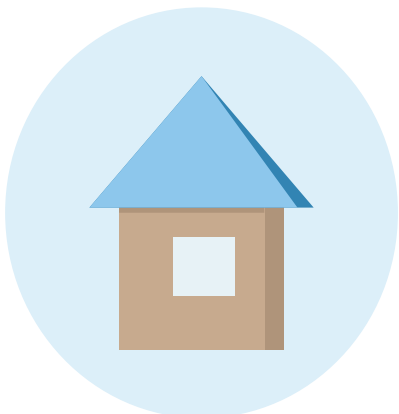
Support, training & allowance provided

For further information call:
1300 325 627

www.wesleymission.org.au/wesleydalmar

COVID-19

How to protect yourself and our community



Self-isolate and practice social distancing



Clean and disinfect surfaces regularly



Use hand sanitiser



Wash your hands regularly

COVID-19 HOTLINE - 1800 020 080

Liesl Tesch MP | Member for Gosford



Community group restarts its dunecare program

Umina Community Group has restarted its dunecare program, with the lifting of coronavirus restrictions.

It has also doubled its number of dunecare teams.

"From July 1, the program will be re launched and expanded while operating under strict Covid-19 guidelines," said group vice-president Mr Rod Unsworth.

The group would now run four Wednesday dunecare teams each month, where previously it had run two, he said.

Now two teams will be run at South St. One will be held at Berith St, and the other will be held at Ocean Beach Rd, adjacent to the Ocean Beach Surf Life Saving Club.

The Ocean Beach Rd team will meet on the first Wednesday of the month, led by Ms Jan Deighton.

The Berith St team will meet on the second Wednesday of the month, led by Mr Mark Nitsos.

On the third Wednesday of the month, a team led by Ms Alison Winch will meet at South St.

On the fourth Wednesday of the month, a team led by Ms Debbie Sunartha will also meet at South St.

"Our leadership group for this expanded initiative, of Jan, Mark, Alison and Debbie, provide a wealth of experience," Mr Unsworth said.



He said the group was calling for volunteers to help with the work of restoring the health of the dunes at Umina Beach.

Mr Nitsos is the other vice-president of the Community Group.

He said: "Our work sessions provide an interesting outdoor activity in a great environment with the opportunity to meet with enthusiastic community

minded locals while providing the satisfaction of contributing to a better local environment.

"Over the past five years, a string of enduring friendships have been built while valuable work has been done on the dunes."

He said the work was conducted under the supervision of Central Coast Council's Landcare program.

"Council will provide protective gloves, tools and ongoing training while each session will be supervised by a qualified environmental specialist."

Mr Nitsos said the program started in 2014 and had "clocked-up" more than 1000 volunteer hours.

He said it "has had a significant impact on the health of the dunes

through removal of weeds and revegetation with local plants species".

The dunecare teams will meet from 9am to 11am in the winter months from April to October and from 8am to 10am in summer.

SOURCE:
Media Release, 1 July 2020
Rod Unsworth, Umina Community Group

Notice of Exhibition Notification of Herbicide Use

Central
Coast
Council

Central Coast Council will be applying Glyphosate 360 and Metasulfuron-methyl between **1 July 2020** and **30 June 2021** to specific waterways and drainage lines within the local government area for the purpose of waterway, ecosystem and asset protection.

Glyphosate is registered for use in Australia by the Australian Pesticides and Veterinary Medicines Authority. Non-chemical methods of weed control are also utilised wherever practicable.

During application, signage will be clearly displayed to notify application of herbicides to waterways and will include information on the herbicide being applied, the location details, the dates and the weed Council is managing. During signposted periods, the public is advised not to use, drink or swim in the water until signage is removed.

For further information or to obtain a copy of the Safety Data Sheet (SDS) for the product, please contact Council's Creeks Officer on **4325 8963**.

This notification is provided in accordance with Council's Pesticide Use Notification Plan and the Environmental Protection Licence 7643 which are available for viewing at the Gosford and Wyong Administration Buildings or may be viewed on Council's website **centralcoast.nsw.gov.au**

Gary Murphy
Chief Executive Officer

Central Coast Council Offices 2 Hely St Wyong / 49 Mann St Gosford
8.30am - 5.00pm, Monday to Friday T 1300 463 954
Mayor Lisa Matthews | Chief Executive Officer Gary Murphy

MindHealth

It's ok to ask for help...

Call 1300 029 131
mindhealth.org.au

Free professional support for those who live and work in the Hunter, New England and Central Coast regions.

Call 1300 029 131 or visit **mindhealth.org.au** to speak to a counsellor. Help is available to anyone aged 15 or over, Monday to Saturday 7am to 9pm.

This service is funded by

Delivered by

phn
HUNTER NEW ENGLAND
AND CENTRAL COAST
An Australian Government Initiative

on the line



News



DDK DREAM DOORS® KITCHENS AMAZING KITCHEN FACELIFTS

DOES YOUR HOME NEED AN AMAZING KITCHEN MAKEOVER?

Facelift or replace your drawers, bench top or cabinetry



BEFORE



AFTER

Best quality products at the most competitive prices

Call now for a FREE HOME CONSULTATION on 1800 373 263 or Nathan 0421 791 107

Nathan@dreamdoors.com.au - www.dreamdoors.com.au

Garden tour and induction day

Woy Woy Peninsula Community Garden has announced it will hold a garden tour and induction on the second Saturday of each month.

The tour and volunteer induction will be conducted by coordinator Ms Jill Meredith.

Gold coin donations will be accepted.

A tour and induction day was held on Saturday, July 11.

"This opportunity will repeat monthly."

SOURCE:
Social media, 9 Jul 2020
Jill Meredith, Peninsula Community Garden

CoastalCompensation Law Specialists



ACCREDITED SPECIALIST
PERSONAL INJURY

- Motor Vehicle Accidents
- Personal Injury and work related claims
- Life Insurance - Death Benefit
- Workers Compensation
- Total Permanent Disability Claims
- Public Liability claims

**We have a dedicated team of lawyers
with over 50 yrs combined experience**

25 Alison Road WYONG - 98 Mann Street GOSFORD

4353 1248

4322 6666

**NO WIN...
NO FEE***

*Conditions apply

YOUR INSURANCE SPECIALISTS



Lockdown library service appreciated

This is to express my thanks to Central Coast Council's Woy Woy library for services provided during the lockdown.

I am sure many staff were performing duties outside of their normal scope in order to facilitate the personal delivery of reserved library items during the most difficult isolation period.

I feel sure there were challenges

Forum

to overcome and procedures to accommodate in enable the personal delivery service to operate consistently throughout this period.

Please know that this service was greatly appreciated and I think one of the very positive highlights for many people during that time.

Email, 2 Jul 2020

Wendy Baylis, Woy Woy

We are losing trees in reserves and on private land

I agree with Joy Cooper's comments (Coast Community News, June 26) that we are losing thousands of mature trees in parks, reserves, coastal open space system and on private holdings.

Central Coast Council cannot claim it has a "green focus" if it persists in allowing the excessive removal of trees either on public lands or on private properties.

It would be beneficial for the public and Council if an estimate of the number of trees being removed on public and private lands is kept on a regular basis and made available to the public.

The data could come from Council staff who remove trees on public lands and from Council applications from homeowners and developers to remove trees.

This data could be compared with new plantings and could

Forum

LETTERS TO THE EDITOR

should be sent to:

Peninsula News

PO Box 1056, Gosford 2250
or editorial@centralcoastnews.net

See Page 2 for contribution conditions

inform Council of how well it is living up to its claim of promoting greening and ensuring the wellbeing of communities through the protection of local bushland, urban trees, tree canopies and expansion of the Coast Open Space System.

Email, 29 Jun 2020

Suraya Coorey, Woy Woy

Shuddered at reserve plan

I shuddered when reading that Central Coast Council is planning "a complete redesign of Mt Ettalong Reserve" (Peninsula News, 1 June 2020).

Will this be like the redesign of a walking track at Winney Bay when, to the disgust of most locals, Council started to concrete the place?

Mt Ettalong is a special place, mostly a natural place untouched by the withered hand of Council, except for a large water tank and a small viewing platform on the headland.

This is a dangerous place (I wouldn't take children up there)

Forum

and not many people go there and the timbers on the platform need replacing.

How many trees will be destroyed to create a parking lot for the thousands who don't go there?

How many tonnes of concrete will be poured to create a three-metre wide "track" that few use?

This track will need to be fenced both sides as to the north and south are sheer cliffs, dangerous drops.

How much of ratepayers' hard-earned money will be wasted so Council can engage in another

round of environmental vandalism? Environmental vandalism is one of the few things that this Council excels at.

Where do they find fools who think it is cool to destroy trees?

As reported in Peninsula News on June 15, page 9, when some parents attempted to start a small landcare group at Umina Primary School they were refused funding or any material assistance from Council.

Residents should direct their concerns to the State Member and appropriate Government Ministers and not to this insensitive, deaf and blind "Council".

Email, 29 Jun 2020

Bryan Ellis, Umina

Does Council respond any better than Planning Panel?

Liesl Tesch says that the Local Planning Panel is not "transparent, efficient and accountable" ("Planning Panel proves to be more costly, says Tesch", PN 497), although how she could come to that conclusion, when the Panel has had only one meeting, is difficult to see.

On the other hand, Adam Crouch says that the Panel "removed politics from the local planning system", allowing "independent experts to get on with the job of making merit-based determinations", which is certainly a defensible argument, given the parochial tendency of many councillors.

However, these are obviously just political positions, with nothing to substantiate either view, and only future results will determine the truth of the matter.

Nevertheless, given that panels have operated for some time in other jurisdictions, it would

Forum

be interesting to know whether Mr Crouch would support an independent review of their functioning, in order to provide the public with some information about the process on which a judgement could be made.

Ms Tesch says that "developments need to reflect our community", and this is a truism that few will cavil at, but is there any evidence that the local council responds to community wishes any better than the panel might, once it is fully operational?

A reading of Forum letters in your publications would suggest that there is a widespread dissatisfaction with the way the council has managed many aspects of the city's development, from long-range planning to individual project approvals, and the snail's pace of council's development processes doesn't inspire confidence that matters are going to improve under the present administration.

The council seems to be adept at publishing reports and making announcements, such as the Woy Woy team, "to provide a strategic, streamlined and cost effective approach to ensure priority service delivery" (probably a specification provided by a random-word generator), but concrete results are elusive.

If there has been any improvement to the Woy Woy town centre during this council's term, it isn't visible to the naked eye.

The council seems to be well versed in bureaucratic pettiness, (eg, excuses for not having soap in public toilets), but weak on any big-picture intentions for the city or on any mechanisms for expanding Central Coast into a liveable, economically-sound community.

My prediction is that, as long as the donkey vote goes on electing the same old political hacks on to the council, we shall have to look at new and untried methods (such as Planning Panels) to get any relief.

Email, 30 Jun 2020

Bruce Hyland, Woy Woy

Live Well at Home during and beyond COVID-19

We Do Home Care Differently



CHSP, NDIS & Home Care Packages

- Leading provider of in-home care services, including personal care, meal preparation, household task, Social support, transport, gardening and more!
- 24/7 Live-in, Post-Hospital, Respite and Casual Care throughout Central Coast & Hunter Region
- Experienced with advanced care needs, including Alzheimer's and Parkinson's.
- Providing care services to NDIS clients to achieve their goals
- Consistency of care with carefully matched Carers
- Zero exit fees, low case management fees – more care hours available!

Call Today to arrange a FREE In-Home consultation!

02 4353 1700

WWW.COASTWIDECOMMUNITYCARE.COM.AU - ENHANCING LIFE, EXCELLING IN CARE

	ABC (C20/21)	PRIME (C61/60)	NINE (C81/80)	TEN (C13)	SBS (C30)
Monday 13 July	<div>6:00 News Breakfast [s]</div> <div>9:00 ABC News Mornings [s]</div> <div>10:00 Landline [s]</div> <div>11:00 Grand Designs [s]</div> <div>12:00 ABC News At Noon [s]</div> <div>1:00 Marcella (M I) [s]</div> <div>1:45 Victoria (PG) [s]</div> <div>3:00 ABC News Afternoons [s]</div> <div>4:10 Think Tank [s]</div> <div>5:10 The Repair Shop [s]</div> <div>6:00 The Drum [s]</div> <div>7:00 ABC News [s]</div> <div>7:30 7.30 [s]</div> <div>8:00 Back Roads: Girgarre, Victoria</div> <div>8:30 Four Corners [s]</div> <div>9:15 Media Watch [s]</div> <div>9:35 Q&A (PG) [s]</div> <div>10:40 ABC Late News [s]</div> <div>11:10 Making Muriel (M I) [s]</div> <div>12:10 Wentworth (MA15+) [s]</div> <div>12:55 Get KrackIn (MA15+) [s]</div> <div>1:25 rage (MA15+) [s]</div> <div>3:15 Gardening Australia [s]</div> <div>3:40 Victoria: Ladies In Waiting (PG)</div> <div>4:30 The Drum [s]</div> <div>5:30 7.30 [s]</div>	<div>6:00 Sunrise [s]</div> <div>9:00 The Morning Show (PG) [s]</div> <div>11:30 Seven Morning News [s]</div> <div>12:00 Movie: "Lethal Vows" (PG) ('99) Stars: John Ritter</div> <div>2:00 The Chase UK (PG) [s]</div> <div>4:00 Seven News At 4 [s]</div> <div>5:00 The Chase Australia [s]</div> <div>6:00 Seven News [s]</div> <div>7:00 Home And Away (PG) [s]</div> <div>7:30 Big Brother (M) [s]</div> <div>9:00 Movie: "Lucy" (MA15+) ('14) – A woman, accidentally caught in a dark deal, turns the tables on her captors and transforms into a merciless warrior evolved beyond human logic. Stars: Scarlett Johansson, Morgan Freeman, Min-sik Choi, Amr Waked, Julian Rhind-Tut</div> <div>10:40 The Latest Seven News [s]</div> <div>10:30 S.W.A.T.: Rocket Fu</div> <div>11:10 The Goldbergs: Angst-Giving (PG) [s]</div> <div>12:00 Mean Mums (PG) [s]</div> <div>12:30 Home Shopping</div>	<div>5:30 Today [s]</div> <div>9:00 Today Extra [s]</div> <div>11:30 NINE's Morning News [s]</div> <div>12:00 Ellen (PG) [s]</div> <div>1:00 The Voice: The Showdowns 1 (PG) [s]</div> <div>3:00 Tipping Point [s]</div> <div>4:00 NINE's Afternoon News [s]</div> <div>5:00 Millionaire Hot Seat [s]</div> <div>6:00 NINE News [s]</div> <div>7:00 A Current Affair (PG) [s]</div> <div>7:30 The Voice: The Showdowns 2 (PG) [s]</div> <div>9:30 One Night Only - The Beatles In Oz - Live And Remastered [s] – Now for the very first time, the concert completely re-mastered.</div> <div>10:30 100% Footy (M) [s]</div> <div>11:30 NINE News Late [s]</div> <div>12:00 Lethal Weapon: Frankie Comes To Hollywood (MA15+)</div> <div>12:50 A Current Affair (PG) [s]</div> <div>1:20 9Honey - He Said, She Said (PG) [s]</div> <div>1:30 Home Shopping</div>	<div>6:00 Headline News [s]</div> <div>8:30 Studio 10 (PG) [s]</div> <div>12:00 Dr Phil (PG) [s]</div> <div>1:00 Masterchef Australia (PG) [s]</div> <div>2:30 Entertainment Tonight [s]</div> <div>3:00 Judge Judy (PG) [s]</div> <div>3:30 My Market Kitchen [s]</div> <div>4:00 Everyday Gourmet With Justine Schofield [s]</div> <div>4:30 The Bold And The Beautiful (PG) [s]</div> <div>5:00 10 News First [s]</div> <div>6:00 WIN News [s]</div> <div>6:30 The Project (PG) [s]</div> <div>7:30 Masterchef Australia (PG) [s]</div> <div>8:40 Have You Been Paying Attention? (M) [s] – Have Tony Martin, Celia Pacquola, Denise Scott, Ed Kavalee and Sam Pang been paying attention?</div> <div>9:40 Adam Hills: Take His Legs (M)</div> <div>10:40 Celebrity Gogglebox USA (M)</div> <div>11:40 WIN's All Australian News [s]</div> <div>12:40 The Project (PG) [s]</div> <div>1:40 The Late Show (PG) [s]</div> <div>2:30 Home Shopping</div>	<div>5:00 CGTN English News</div> <div>5:15 NHK World English News</div> <div>5:30 Worldwatch</div> <div>2:00 The 2000s: Quagmire (M)</div> <div>2:50 Alex Polizzi The Fixer (PG)</div> <div>4:00 Great British Railway Journeys: Working To Clapham Junction (PG)</div> <div>4:35 Inside Westminster Abbey (PG)</div> <div>5:30 Letters And Numbers</div> <div>6:00 Mastermind Australia</div> <div>6:30 SBS World News</div> <div>7:30 The Windsors' Lost Letters: Family First (PG)</div> <div>8:30 24 Hours In Emergency: A Life Less Ordinary (M)</div> <div>9:30 Depression And Me (M d,l)</div> <div>10:30 SBS World News Late</div> <div>11:00 Cycling: Tour De France Etape Classique</div> <div>1:30 Going Places With Ernie Dingo (PG)</div> <div>3:25 Scotland From The Sky</div> <div>4:25 Great British Railway Journeys (PG)</div>
Tuesday 14 July	<div>6:00 News Breakfast [s]</div> <div>9:00 ABC News Mornings [s]</div> <div>10:00 Four Corners [s]</div> <div>10:45 Charlie Pickering - My Guest Tonight (PG) [s]</div> <div>11:00 The Repair Shop [s]</div> <div>12:00 ABC News At Noon [s]</div> <div>1:00 Rosehaven (PG) [s]</div> <div>1:30 Retrograde [s]</div> <div>1:55 Victoria (PG) [s]</div> <div>2:45 Deadlock (M) [s]</div> <div>3:00 ABC News Afternoons [s]</div> <div>4:10 Think Tank [s]</div> <div>5:10 The Repair Shop [s]</div> <div>6:00 The Drum [s]</div> <div>7:00 ABC News [s]</div> <div>7:30 7.30 [s]</div> <div>8:00 Foreign Correspondent [s]</div> <div>8:30 White Light (M) [s]</div> <div>9:30 Program To Be Advised</div> <div>10:20 ABC Late News [s]</div> <div>10:50 Q&A [s]</div> <div>12:00 Wentworth (MA15+) [s]</div> <div>12:50 Get KrackIn (M I,s) [s]</div> <div>1:20 rage (MA15+) [s]</div> <div>3:15 Gardening Australia [s]</div>	<div>6:00 Sunrise [s]</div> <div>9:00 The Morning Show (PG) [s]</div> <div>11:30 Seven Morning News [s]</div> <div>12:00 Movie: "Love In The Vineyard" (PG) ('16) – A woman's life gets thrown into turmoil when her boyfriend's ex claims that he is the father of her child. Stars: Emmanuelle Vaugier</div> <div>2:00 The Chase UK [s]</div> <div>4:00 Seven News At 4 [s]</div> <div>5:00 The Chase Australia [s]</div> <div>6:00 Seven News [s]</div> <div>7:00 Home And Away (PG) [s]</div> <div>7:30 Big Brother (M) [s]</div> <div>9:00 Ramsay's 24 Hours To Hell And Back: Los Toros Mexican Restaurant (M I) [s]</div> <div>10:00 Criminal Minds: Rusty (M v) [s]</div> <div>11:00 The Latest Seven News [s]</div> <div>11:30 The Goldbergs: The Beverly Goldberg Cookbook (Part 2) (PG)</div> <div>12:00 Marvel's Agents Of S.H.I.E.L.D. (MA15+) [s]</div> <div>1:00 Home Shopping</div>	<div>5:30 Today [s]</div> <div>9:00 Today Extra [s]</div> <div>11:30 NINE's Morning News [s]</div> <div>12:00 Ellen (PG) [s]</div> <div>1:00 The Voice: The Showdowns 2 (PG) [s]</div> <div>3:00 Tipping Point (PG) [s]</div> <div>4:00 NINE's Afternoon News [s]</div> <div>5:00 Millionaire Hot Seat [s]</div> <div>6:00 NINE News [s]</div> <div>7:00 A Current Affair (PG) [s]</div> <div>7:30 The Voice: Semi Finals (PG) [s]</div> <div>9:40 Elton John Uncensored (M d,l) [s] – Sir Elton John talks to Graham Norton, looking back at his extraordinary life and a career spanning over fifty years.</div> <div>10:50 NINE News Late [s]</div> <div>11:20 The Embassy (M) [s]</div> <div>11:50 Australia's Top Ten Of Everything (M) [s]</div> <div>12:40 Tipping Point [s]</div> <div>1:30 A Current Affair (PG) [s]</div> <div>2:00 Home Shopping</div> <div>2:30 Skippy - The Bush Kangaroo</div> <div>3:00 Home Shopping</div>	<div>6:00 Headline News [s]</div> <div>8:30 Studio 10 (PG) [s]</div> <div>12:00 Dr Phil (PG) [s]</div> <div>1:00 Masterchef Australia (PG) [s]</div> <div>2:10 Entertainment Tonight [s]</div> <div>2:30 Judge Judy (PG) [s]</div> <div>3:30 My Market Kitchen [s]</div> <div>4:00 Everyday Gourmet With Justine Schofield [s]</div> <div>4:30 The Bold And The Beautiful (PG) [s]</div> <div>5:00 10 News First [s]</div> <div>6:00 WIN News [s]</div> <div>6:30 The Project (PG) [s]</div> <div>7:30 Masterchef Australia (PG) [s]</div> <div>8:40 The Montreal Comedy Festival (MA15+) [s]</div> <div>9:40 NCIS: Toil And Trouble (M v) [s]</div> <div>10:40 NCIS: Los Angeles: The Monster (M v) [s]</div> <div>11:40 WIN's All Australian News [s]</div> <div>12:40 The Project (PG) [s]</div> <div>1:40 The Late Show With Stephen Colbert (PG) [s]</div> <div>2:30 Home Shopping</div> <div>5:00 The Talk (PG) [s]</div>	<div>5:00 CGTN English News</div> <div>5:15 NHK World English News</div> <div>5:30 Worldwatch</div> <div>1:00 PBS Newshour</div> <div>2:05 The 2000s: Yes We Can (M I,s)</div> <div>2:55 Who Do You Think You Are?: Geoffrey Rush</div> <div>3:55 March Of The Penguins (PG) (In French)</div> <div>5:30 Letters And Numbers</div> <div>6:00 Mastermind Australia</div> <div>6:30 SBS World News</div> <div>7:30 Great Asian Railways Journeys: Hong Kong (PG)</div> <div>8:30 Insight: Affairs</div> <div>9:30 Where Are You Really From? (PG)</div> <div>10:05 Grand Tours Of Scotland's Lochs (PG)</div> <div>10:35 SBS World News Late</div> <div>11:05 Cycling: Tour De France Etape Classique</div> <div>1:30 Going Places With Ernie Dingo (PG)</div> <div>2:30 Ride Upon The Storm (M I,v) (In Danish)</div>
Wednesday 15 July	<div>6:00 News Breakfast [s]</div> <div>9:00 ABC News Mornings [s]</div> <div>10:00 Q&A [s]</div> <div>11:00 The Repair Shop [s]</div> <div>12:00 ABC News At Noon [s]</div> <div>12:30 National Press Club Address</div> <div>1:40 Media Watch [s]</div> <div>2:00 Victoria (PG) [s]</div> <div>2:45 Deadlock (M) [s]</div> <div>3:00 ABC News Afternoons [s]</div> <div>4:10 Think Tank [s]</div> <div>5:10 The Repair Shop [s]</div> <div>6:00 The Drum [s]</div> <div>7:00 ABC News [s]</div> <div>7:30 7.30 [s]</div> <div>8:00 Hard Quiz (PG) [s]</div> <div>8:30 The Weekly With Charlie Pickering [s]</div> <div>9:00 Rosehaven (PG) [s]</div> <div>9:30 Retrograde (M) [s]</div> <div>9:55 Would I Lie To You? (PG) [s]</div> <div>10:25 ABC Late News [s]</div> <div>10:55 Four Corners [s]</div> <div>11:45 Media Watch [s]</div> <div>12:00 Wentworth (MA15+) [s]</div> <div>12:45 Get KrackIn (M I,s) [s]</div>	<div>6:00 Sunrise [s]</div> <div>9:00 The Morning Show (PG) [s]</div> <div>11:30 Seven Morning News [s]</div> <div>12:00 Movie: "Two Against Time" (PG) ('02) Stars: Ellen Muth, Marlo Thomas, Peter Friedman</div> <div>2:00 The Chase UK [s]</div> <div>4:00 Seven News At 4 [s]</div> <div>5:00 The Chase Australia [s]</div> <div>6:00 Seven News [s]</div> <div>7:00 Home And Away (PG) [s]</div> <div>7:30 Big Brother (M) [s] – With only four days left in the house, the \$250,000 prize is closer than ever as two housemates roll the dice on Big Brother's biggest twist yet!</div> <div>9:00 Program To Be Advised</div> <div>10:00 The Latest Seven News [s]</div> <div>10:30 The Front Bar (M) [s] – Join Sam Pang, Mick Molloy and Andy Maher as they share a laugh about the AFL world.</div> <div>11:30 Autopsy USA: George Michael (M d,s) [s]</div> <div>12:30 Home Shopping</div>	<div>5:30 Today [s]</div> <div>9:00 Today Extra [s]</div> <div>11:30 NINE's Morning News [s]</div> <div>12:00 Ellen (PG) [s]</div> <div>1:00 The Voice: Semi Finals (PG) [s]</div> <div>3:00 Tipping Point (PG) [s]</div> <div>4:00 NINE's Afternoon News [s]</div> <div>5:00 Millionaire Hot Seat [s]</div> <div>6:00 NINE News [s]</div> <div>7:00 A Current Affair (PG) [s]</div> <div>7:30 RBT: Caught In The Net/ Fountain Of Youth (PG) [s]</div> <div>8:30 Emergency (M) [s] – A gunshot victim arrives under police guard and Dr Sarah fears the patient could die from his injuries.</div> <div>9:00 Busted In Bangkok (M) [s]</div> <div>9:30 Botched: Cougars And Cobras And Boobs (M) [s]</div> <div>10:30 NINE News Late [s]</div> <div>11:00 New Amsterdam: Anthropocene (M) [s]</div> <div>11:50 Dr Miami: Plastic Makes Perfect (M) [s]</div> <div>12:40 Tipping Point (PG) [s]</div> <div>1:30 A Current Affair (PG) [s]</div>	<div>6:00 Headline News [s]</div> <div>8:30 Studio 10 (PG) [s]</div> <div>12:00 Dr Phil (PG) [s]</div> <div>1:00 Masterchef Australia (PG) [s]</div> <div>2:10 Entertainment Tonight [s]</div> <div>2:30 Judge Judy (PG) [s]</div> <div>3:30 My Market Kitchen [s]</div> <div>4:00 Everyday Gourmet With Justine Schofield [s]</div> <div>4:30 The Bold And The Beautiful (PG) [s]</div> <div>5:00 10 News First [s]</div> <div>6:00 WIN News [s]</div> <div>6:30 The Project (PG) [s]</div> <div>7:30 Bachelor In Paradise (M) [s] – Everyone deserves a second (or third) chance at love and for our lucky singles, this chapter begins in Paradise.</div> <div>9:00 Tommy: The Ninth Girl (M) [s]</div> <div>10:00 Bull: Jury Duty (M v) [s]</div> <div>11:00 WIN's All Australian News [s]</div> <div>12:00 The Project (PG) [s]</div> <div>1:00 The Late Show (PG) [s]</div> <div>2:00 Home Shopping</div> <div>5:00 The Talk (PG) [s]</div>	<div>5:00 CGTN English News</div> <div>5:15 NHK World English News</div> <div>5:30 Worldwatch</div> <div>1:00 PBS Newshour</div> <div>2:00 The 2000s: The Financial Crisis (M v)</div> <div>2:50 Insight</div> <div>3:45 Great British Railway Journeys (PG)</div> <div>4:20 Lady Jane Grey - Murder Of A Child Queen: Shades Of Grey (PG)</div> <div>5:30 Letters And Numbers</div> <div>6:00 Mastermind Australia</div> <div>6:30 SBS World News</div> <div>7:30 Tony Robinson's World By Rail: Scandinavia (PG)</div> <div>8:30 Who Gets To Stay In Australia? (M)</div> <div>9:30 Child Of Our Time: Turning 20 (M)</div> <div>10:30 SBS World News Late</div> <div>11:00 Cycling: Tour De France Etape Classique</div> <div>1:30 Going Places With Ernie Dingo (PG)</div>
	Also see: ABC COMEDY (Channel 22) ABC ME (Channel 23) ABC NEWS (Channel 24)	Also see: 7TWO (Channel 62) 7MATE (Channel 63) 7FLIX (Channel 66) 7FOOD (Channel 74)	Also see: GEM (Channel 82) GO! (Channel 83/88) LIFE (Channel 84)	Also see: 10 PEACH (Channel 11) 10 BOLD (Channel 12)	Also see: SBS VICELAND (Channel 31) SBS MOVIES (Channel 32) SBS FOOD (Channel 33) SBS NITV (Channel 34)

Classifications: (G) General, (PG) Parental Guidance, (M) Mature Audiences, (MA15+) Mature Audience Over 15 Years, [s] Subtitles
Consumer Advice: (d) drug references, (s) sexual references or sex scenes (h) horror, (l) language, (mp) medical procedures, (n) nudity, (v) violence



Linda Emery
Lawyer
Since 1983

Hospital &
Home Visits
By Appointment

Specialising in:

FAMILY LAW

- Divorces
- Children's Issues
- Binding Financial Agreements
- De facto
- Property

WILLS & ESTATES

- Probate, Wills & Disputes
- Power of Attorney
- Enduring Guardianship

So much more than just law...



Linda Emery
& ASSOCIATES PTY LTD

LAWYERS & CONVEYANCERS

Ground Floor, Suite 6, 22 Watt St Gosford

CONVEYANCING

- Purchase & Sale of Property
- Refinancing Mortgages
- Purchase & Sale of Business
- Leasing
- Retirement Villages

COURT APPEARANCES

- Criminal Law
- Traffic Matters
- AVO Matters
- Drink Driving

4323 4766

Email: lemery@lindaemery.com.au
Web: www.lindaemery.com.au

	ABC (C20/21)	PRIME (C61/60)	NINE (C81/80)	TEN (C13)	SBS (C30)
Thursday 16 July	<p>6:00 News Breakfast [s] 9:00 ABC News Mornings [s] 10:00 Program To Be Advised 10:30 Back Roads [s] 11:00 The Repair Shop [s] 12:00 ABC News At Noon [s] 1:00 Hard Quiz (PG) [s] 1:30 The Weekly With Charlie Pickering [s] 1:55 Victoria (PG) [s] 2:45 Deadlock (M) [s] 3:00 ABC News Afternoons [s] 4:10 Think Tank [s] 5:10 The Repair Shop [s] 6:00 The Drum [s] 6:55 Sammy J [s] 7:00 ABC News [s] 7:30 7.30 [s] 8:00 The Heights (PG) [s] 8:30 Escape From The City [s] 9:30 Father Brown (PG) [s] 10:15 ABC Late News [s] 10:45 Louis Theroux's Weird Weekends (PG) [s] 12:30 Baptiste: Lucy (PG) [s] 1:30 Wentworth (MA15+) [s]</p>	<p>6:00 Sunrise [s] 9:00 The Morning Show (PG) [s] 11:30 Seven Morning News [s] 12:00 Movie: "Flirting With Forty" (PG) ('08) Stars: Heather Locklear, Robert Buckley, Cameron Bancroft, Chelah Horsdal 2:00 The Chase UK [s] 4:00 Seven News At 4 [s] 5:00 The Chase Australia [s] 6:00 Seven News [s] 7:00 Home And Away (PG) [s] 7:30 Movie: "Harry Potter And The Half Blood Prince" (M h,v) ('09) – Harry Potter returns to Hogwarts for his sixth year, to face a growing danger that may be more than a match for his strengthening powers as a wizard. Stars: Alan Rickman, Daniel Radcliffe, Emma Watson, Jim Broadbent, Michael Gambon, Tom Felton 10:30 The Latest Seven News [s] 11:00 Program To Be Advised 12:30 Home Shopping</p>	<p>5:30 Today [s] 9:00 Today Extra [s] 11:30 NINE's Morning News [s] 12:00 Ellen (PG) [s] 1:00 Movie: "Courage Mountain" (PG) ('90) Stars: Juliette Caton 3:00 Tipping Point (PG) [s] 4:00 NINE's Afternoon News [s] 5:00 Millionaire Hot Seat [s] 6:00 NINE News [s] 7:00 A Current Affair (PG) [s] 7:30 NRL: Sydney Roosters v Canberra Raiders *Live* From TBA [s] 9:45 Golden Point (M) [s] – Peter Sterling, Paul Vautin, Andrew Johns and Billy Slater join James Bracey for the all the post-match NRL news and analysis. 10:30 NINE News Late [s] 11:00 Murdered By Morning: Acting On Evil (M) [s] 11:50 The Fix: The Wire (M v) [s] 12:40 Tipping Point (PG) [s] 1:30 Home Shopping</p>	<p>6:00 Headline News [s] 8:30 Studio 10 (PG) [s] 12:00 Dr Phil (PG) [s] 1:00 Program To Be Advised 2:30 Entertainment Tonight [s] 3:00 Judge Judy (PG) [s] 3:30 My Market Kitchen [s] 4:00 Everyday Gourmet With Justine Schofield [s] 4:30 The Bold And The Beautiful (PG) [s] 5:00 10 News First [s] 6:00 WIN News [s] 6:30 The Project (PG) [s] 7:30 Bachelor In Paradise (M) [s] 9:00 Celebrity Gogglebox USA (M) 10:00 Law & Order: SVU: Man Down (M) [s] 11:00 Blue Bloods: Meet The New Boss (M v) [s] 12:00 WIN's All Australian News [s] 1:00 The Project (PG) [s] 2:00 The Late Show With Stephen Colbert (PG) [s] 3:00 Home Shopping 5:00 The Talk (PG) [s]</p>	<p>5:00 CGTN English News 5:15 NHK World English News 5:30 Worldwatch 1:00 PBS Newshour 2:00 Over The Black Dot 3:00 The Crusades (PG) 4:00 Great British Railway Journeys: London Kings Cross To Peterborough (PG) 4:30 Lady Jane Grey - Murder Of A Child Queen: Time For A Queen (PG) 5:30 Letters And Numbers 6:00 Mastermind Australia 6:30 SBS World News 7:30 Inside The Orient Express (M) (In English/ French) 8:30 Drain Alcatraz 9:30 War Of The Worlds (MA15+) (In English/ French) 10:30 SBS World News Late 11:00 Cycling: Tour De France Etape Classique 1:30 Going Places With Ernie Dingo (PG) 3:30 Aerial Asia: Malaysia</p>
Friday 17 July	<p>6:00 News Breakfast [s] 9:00 ABC News Mornings [s] 10:00 Foreign Correspondent [s] 10:30 Barrie Cassidy's One Plus One [s] 11:00 The Repair Shop [s] 12:00 ABC News At Noon [s] 1:00 Program To Be Advised 2:00 Victoria (PG) [s] 2:45 Deadlock (M) [s] 3:00 ABC News Afternoons [s] 4:10 Think Tank [s] 5:10 The Repair Shop [s] 6:00 The Drum [s] 7:00 ABC News [s] 7:30 Monty Don's French Gardens: Gardens Of Power And Passion [s] – Monty Don visits some of the most famous and interesting gardens in France. 8:30 Baptiste: Into The Sand (M) [s] 9:30 Marcella (M v) [s] 10:20 ABC Late News [s] 10:45 The Virus [s] 11:10 The Weekly [s] 11:40 rage (MA15+) [s]</p>	<p>6:00 Sunrise [s] 9:00 The Morning Show (PG) [s] 11:30 Seven Morning News [s] 12:00 Movie: "Gifted Hands: The Ben Carson Story" (PG) ('09) – Struggling with poverty, anger and a single parent household, Ben Carson overcomes enormous obstacles to achieve his dream of becoming a physician. Stars: Ben Carson 2:00 The Chase UK [s] 4:00 Seven News At 4 [s] 5:00 The Chase Australia [s] 6:00 Seven News [s] 7:00 Better Homes And Gardens [s] – Joh and Adam team up to show how you can renovate your own bathroom. Tara creates some eco-friendly dyes. Dr Harry tries to help a poodle who pulls on its lead and runs off when unleashed. 8:30 Program To Be Advised 10:45 Program To Be Advised 1:00 Home Shopping</p>	<p>5:30 Today [s] 9:00 Today Extra (PG) [s] 11:30 NINE's Morning News [s] 12:00 Ellen (PG) [s] 1:00 Movie: "The Pink Panther" (PG) ('06) Stars: Steve Martin, Kevin Kline, Jean Reno, Emily Mortimer, Henry Czerny 3:00 Tipping Point (PG) [s] 4:00 NINE's Afternoon News [s] 5:00 Millionaire Hot Seat [s] 6:00 NINE News [s] 7:00 A Current Affair (PG) [s] 7:30 NRL: West Tigers v Brisbane Broncos *Live* From TBA [s] 9:45 Friday Night Knock Off [s] 10:35 Movie: "True Grit" (PG) ('10) Stars: Jeff Bridges, Hailee Steinfeld, Matt Damon, Josh Brolin, Barry Pepper 12:35 Law & Order: Criminal Intent: Semi-Professional (M v) [s] 1:30 Home Shopping 4:30 The Avengers: Correct Way To Kill (PG) [s] 5:30 A Current Affair (PG) [s]</p>	<p>6:00 Headline News [s] 8:30 Studio 10 (PG) [s] 12:00 Dr Phil (PG) [s] 1:00 The Living Room (PG) [s] 2:00 Entertainment Tonight [s] 2:30 Judge Judy (PG) [s] 3:30 My Market Kitchen [s] 4:00 Everyday Gourmet [s] 4:30 The Bold And The Beautiful (PG) [s] 5:00 10 News First [s] 6:00 WIN News [s] 6:30 The Project (PG) [s] 7:30 The Living Room [s] – Amanda, Chris, Barry and Miguel are back to serve up a multitude of uplifting and inspiring stories. 8:30 Have You Been Paying Attention? (M) [s] 9:30 Celebrity Gogglebox USA (M) 10:30 Adam Hills: Take His Legs (M) 11:30 WIN's All Australian News [s] 12:30 The Project (PG) [s] 1:30 The Late Show (PG) [s] 2:30 Home Shopping</p>	<p>5:00 CGTN English News 5:15 NHK World English News 5:30 Worldwatch 1:00 PBS Newshour 2:00 Native America: From Caves To Cosmos (PG) 3:00 NITV News: Nula 3:30 Building The Tube: The Central Line (PG) 4:20 Lady Jane Grey - Murder Of A Child Queen: Live To Die (PG) 5:30 Letters And Numbers 6:00 Mastermind Australia 6:30 SBS World News 7:30 Kenny Rogers: Biography (PG) 9:30 24 Hours In Emergency: Moving On Up (M) 10:30 SBS World News Late 11:00 Cycling: Tour De France Etape Classique 1:30 Going Places With Ernie Dingo (PG) 2:30 Aerial Asia: India 3:30 Aerial Asia: Indonesia 4:25 Great British Railway Journeys (PG)</p>
Saturday 18 July	<p>6:00 rage (PG) [s] 7:00 Weekend Breakfast [s] 10:00 rage Guest Programmer (PG) 12:00 ABC News At Noon [s] 12:30 Movie: "December Boys" (PG) ('07) Stars: Daniel Radcliffe 2:15 Father Brown (PG) [s] 3:00 Dream Gardens [s] 3:35 Escape From The City [s] 4:30 Football: A-League: Perth Glory v Central Coast Mariners *Live* From Central Coast Stadium [s] – The A-League returns after a four month recess with 27 games in 28 days to complete the 2019/20 season. Perth Glory look to keep their finals hopes alive. 7:00 ABC News [s] 7:30 Shakespeare And Hathaway: All That Glisters (PG) [s] 8:20 Les Miserables (M v) [s] 9:20 Thirteen (M l) [s] 10:20 The Good Karma Hospital (M) 11:10 rage Guest Programmer (MA15+) [s]</p>	<p>6:00 Home Shopping 7:00 Weekend Sunrise [s] 10:00 The Morning Show - Weekend (PG) [s] 12:00 Program To Be Advised 1:30 AFL: Round 7: Brisbane Lions v Sydney Swans *Live* From The SCG [s] 5:00 Seven News At 5 [s] 5:30 Border Security - Australia's Front Line (PG) [s] 6:00 Seven News [s] 7:00 Border Patrol (PG) [s] 7:30 Program To Be Advised 10:45 Movie: "Tango And Cash" (M) ('89) – Framed by their ruthless arch-nemesia, a mismatched LAPD crime-fighting duo has to put its differences aside to even the score with the evil kingpin who put them behind bars once and for all. Stars: Sylvester Stallone, Kurt Russell, Teri Hatcher, Jack Palance, Brion James, Robert Z'Dar 1:00 Home Shopping</p>	<p>6:00 Ellen (PG) [s] 7:00 Weekend Today [s] 10:00 Today Extra - Saturday [s] 12:00 Award Winning Tasmania: Spirit Of Tasmania (Part 1) (PG) 12:30 Cybershack (PG) [s] 1:00 The Voice: The Showdowns 1/ The Showdowns 2 (PG) [s] 5:00 NINE News: First At Five [s] 5:30 Getaway (PG) [s] 6:00 NINE News Saturday [s] 7:00 A Current Affair (PG) [s] 7:30 Movie: "Ghostbusters" (PG) ('16) Stars: Melissa McCarthy, Kristen Wiig, Kate McKinnon 9:55 Movie: "Identity Thief" (MA15+) ('14) Stars: Jason Bateman, Melissa McCarthy, Amanda Peet, John Cho, Ti 12:05 Movie: "Project Eden" (M v) ('17) Stars: Erick Avari, Mike Dopud, Paul O'Brien 1:50 9Honey - He Said, She Said (PG) [s] 2:00 Home Shopping 5:30 Wesley Impact [s]</p>	<p>6:00 Unknown Road Adventures 6:30 Entertainment Tonight [s] 7:00 Escape Fishing With ET [s] 7:30 What's Up Down Under? [s] 8:00 All 4 Adventures [s] 9:00 Which Car (PG) [s] 9:30 Studio 10 Saturday (PG) [s] 12:00 Program To Be Advised 12:30 Three Veg And Meat [s] 1:00 Everyday Gourmet With Justine Schofield [s] 1:30 Good Chef Bad Chef [s] 2:00 Pooches At Play [s] 2:30 My Market Kitchen [s] 3:00 What's Up Down Under? [s] 3:30 Farm To Fork [s] 4:00 The Living Room (PG) [s] 5:00 10 News First [s] 6:00 Bondi Rescue (PG) [s] 7:00 The Children's Hospital (PG) 7:30 Ambulance UK (PG) [s] 8:40 Beecham House (M) [s] 9:40 Movie: "Ocean's Twelve" (M l) ('04) Stars: Brad Pitt 12:35 Supercars: Highlights Winton 1:35 Tommy: The Ninth Girl (M) [s]</p>	<p>5:00 CGTN English News 5:15 NHK World English News 5:30 Worldwatch 1:00 PBS Newshour 2:00 Basketball: NBA Spotlight: Los Angeles Lakers 2:30 Figure Skating: ISU World Figure Skating: Ice Dance 4:00 Gadget Man: Property 4:30 Movie: "The Fatal Game" (PG) ('96) Stars: Mark Whetu 5:30 WWII - Battles For Europe: D-Day (PG) 6:30 SBS World News 7:35 Chris Tarrant's Extreme Railway Journeys: Crossing The Emerald Isle (PG) 8:30 Life Drawing UK (M n) 10:45 Sunshine: Shadow Man/ Dark Knight/ Find Your Man/ Jacob's Ladder (M) (In English/ Dinka) 2:40 Movie: "Live Flesh" (MA15+) ('97) Stars: Liberto Rabal, Francesca Neri (In Spanish) 4:30 Great British Railway Journeys (PG)</p>
Sunday 19 July	<p>6:00 rage (PG) [s] 7:00 Weekend Breakfast [s] 9:00 Insiders [s] 10:00 Offsiders [s] 10:30 The World This Week [s] 11:00 Compass (PG) [s] 11:30 Songs Of Praise [s] 12:00 ABC News At Noon [s] 12:30 Landline [s] 1:30 Monty Don's French Gardens 2:30 Restoration Australia (PG) [s] 3:30 Silvia's Italian Table [s] 4:00 Todd Sampson's Life On The Line: Heat Transfer (PG) [s] 4:30 The Mix [s] 5:00 Antiques Roadshow [s] 6:00 Hard Quiz (PG) [s] 6:30 Compass [s] 7:00 ABC News Sunday [s] 7:40 Grand Designs [s] 8:30 Vera: Cuckoo (M) [s] 10:00 Vanity Fair (PG) [s] 10:50 The Bletchley Circle (M v) [s] 11:35 Movie: "The Heartbreak Kid" (M) ('93) Stars: Claudia Karvan 1:10 Happy Valley (M l,s) [s]</p>	<p>6:00 Home Shopping 7:00 Weekend Sunrise [s] 10:00 The Morning Show - Weekend 12:00 House Of Wellness [s] 1:00 Kochie's Business Builders: Small Business First [s] 1:30 Movie: "The Wizard Of Oz" (G) ('39) Stars: Judy Garland, Frank Morgan, Ray Bolger, Bert Lahr 4:00 Better Homes And Gardens 5:00 Seven News At 5 [s] 5:30 Sydney Weekender [s] 6:00 Seven News [s] 7:00 Program To Be Advised 8:00 Program To Be Advised 9:00 Movie: "Deadpool 2" (MA15+) ('18) – Foul-mouthed mutant mercenary Deadpool brings together a team of fellow mutant rogues to protect a young boy with supernatural abilities from the brutal, time-travelling cyborg Cable. Stars: Ryan Reynolds 11:20 The Blacklist: The Kazanjian Brothers (MA15+) [s] 12:30 Home Shopping</p>	<p>6:00 Animal Tales [s] 7:00 Weekend Today [s] 10:00 Sports Sunday (PG) [s] 11:00 Sunday Footy Show (PG) [s] 1:00 The Voice: Semi Final (PG) [s] 3:00 NRL: Penrith Panthers v North Queensland Cowboys *Live* From Panthers Stadium [s] 6:00 NINE News Sunday [s] 7:00 The Voice: Grand Final (PG) [s] – The Top 4 artists compete for the title of The Voice Australia 2020 in a huge public vote. 9:00 60 Minutes (PG) [s] 10:00 NINE News Late [s] 11:00 Program To Be Advised 11:55 Mysteries And Scandals: The Last Power Play: The Killing Of Gavin Smith (M v,d) [s] 12:55 World's Greatest Animal Encounters: Forest Animals (PG) [s] 1:50 9Honey - Every Day Kitchen 2:00 Home Shopping 2:30 Skippy - The Bush Kangaroo 3:00 Home Shopping</p>	<p>6:00 Religious Programs [s] 7:30 Fishing Australia [s] 8:00 Everyday Gourmet With Justine Schofield [s] 8:30 The Living Room (PG) [s] 9:30 Studio 10 Sunday (PG) [s] 12:00 Good Chef Bad Chef [s] 12:30 My Market Kitchen [s] 1:00 Farm To Fork [s] 1:15 Masterchef Australia (PG) [s] 2:30 Australia By Design [s] 3:30 Which Car (PG) [s] 4:00 Supercars: Highlights Sydney 5:00 10 News First [s] 6:00 WIN News [s] 6:30 The Sunday Project (PG) [s] 7:30 Program To Be Advised 9:00 FBI: Little Egypt (M v) [s] 10:00 FBI: Partners In Crime (M v) [s] 11:00 NCIS: Trapped (M) [s] – A petty officer is found murdered and McGee spends hours on the victim's ham radio. 12:00 The Sunday Project (PG) [s] 1:00 Home Shopping 5:00 The Talk (PG) [s]</p>	<p>5:00 CGTN English News 5:15 NHK World English News 5:30 Worldwatch – Deutsche Welle English News 6:00 Worldwatch Continues 12:55 Speedweek 2:55 Cycling: La Course By Le Tour De France 2018 4:00 Cycling: Incycle 4:30 Cycling: Cadel Evans Conquering Le Tour 5:30 WWII - Battles For Europe: Battle For Caen (PG) (In English/ German) 6:30 SBS World News 7:30 Mont Saint-Michel: Scanning The Wonder (PG) (In English/ French) 8:30 Supervolcano (M) 10:30 Atlantis Rising (PG) 12:15 How To Lose Weight Well (PG) 2:55 The September Issue (M l) 4:30 Great British Railway Journeys: Coventry To Watford (PG)</p>
	<p>Also see: ABC COMEDY (Channel 22) ABC ME (Channel 23) ABC NEWS (Channel 24)</p>	<p>Also see: 7TWO (Channel 62) 7MATE (Channel 63) 7FLIX (Channel 66) 7FOOD (Channel 74)</p>	<p>Also see: GEM (Channel 82) GO! (Channel 83/88) LIFE (Channel 84)</p>	<p>Also see: 10 PEACH (Channel 11) 10 BOLD (Channel 12)</p>	<p>Also see: SBS VICELAND (Channel 31) SBS MOVIES (Channel 32) SBS FOOD (Channel 33) SBS NITV (Channel 34)</p>

Development Consents

Notice is given of the granting of the following Development Consents and Complying Development Certificates pursuant to Section 101 of the Environmental Planning and Assessment Act, 1979. Consents can be made available for inspection by contacting Central Coast Council.

No	Date	Address	Suburb	Proposed Development
54047/2018	23-06-2020	125 Avoca Dr	AVOCA BEACH	Demolition of Existing Dwelling & Dwelling House (New) (Amended Application)
565/2020	30-06-2020	32 Rays Rd	BATEAU BAY	Shed
503/2020	30-06-2020	9 Nightshade Dr	BERKELEY VALE	Dwelling
494/2020	01-07-2020	7 White Fig Dr	BERKELEY VALE	Dwelling
422/2020	03-07-2020	6 Scribbly Gum St	BERKELEY VALE	Single Storey Attached Dual Occupancy & Torrens Title Subdivision (1 Lot into 2)
56538/2019	30-06-2020	112 Booker Bay Rd	BOOKER BAY	Swimming Pool Inground
58293/2020	24-06-2020	376 Booker Bay Rd	BOOKER BAY	Alterations & Additions to Existing Dwelling
478/2020	30-06-2020	59 Sunrise Ave	BUDGEWOI	Alterations & Additions
506/2020	29-06-2020	33 Trevally Ave	CHAIN VALLEY BAY	Dwelling
58433/2020	02-07-2020	169 Copacabana Dr	COPACABANA	Secondary Dwelling
354/2020	01-07-2020	1508 Mandalong Rd	DOORALONG	Dwelling & Inground Pool
58399/2020	01-07-2020	110 Rickard Rd	EMPIRE BAY	Alterations & Additions to Existing Dwelling
57808/2020	29-06-2020	419 Terrigal Dr	ERINA	Demolition of the Existing Dwelling/ Ancillary Structures & Construction of a Physiotherapy Clinic
58006/2020	25-06-2020	22 Portsmouth Rd	ERINA	Approved Shed being Mirrored to Allow Carport Access from Level Side.
318/2020	02-07-2020	14 Stenning Ln	FOUNTAINDALE	Alterations & Additions to Existing Dual Occupancy
58462/2020	30-06-2020	7 Cooper Rd	GREEN POINT	Retaining Walls
553/2020	03-07-2020	38 Winbin Cr	GWANDALAN	Alterations & Additions & Inground Pool
579/2020	30-06-2020	4 Bateup Dr	HAMLYN TERRACE	Dwelling
575/2020	02-07-2020	33 Crane St	HAMLYN TERRACE	Dwelling
476/2020	30-06-2020	1 Dalgety Rd	KANGY ANGY	Inground Pool
58359/2020	24-06-2020	7 Kuch Pl	KARIONG	Carport
56271/2019	16-06-2020	290 Avoca D & 88 Scaysbrook Dr	KINCUMBER	Residential 108 Bed Aged Care Facility (RPP)
58441/2020	30-06-2020	141 Avoca Dr	KINCUMBER	Alterations & Additions to Existing Dwelling
991/2019	29-06-2020	176 Greta Rd	KULNURA	Use of a Manufactured Home as a Rural Worker's Dwelling including Construction of an Attached Verandah & 2 Carports & Associated Works
408/2020	03-07-2020	1 / 5 Nirvana St	LONG JETTY	Proposed Alterations & Additions to Existing 2 Flats
482/2020	30-06-2020	3 Riveroak Dr	MARDI	Awning
58374/2020	01-07-2020	Hawkesbury Riv	MARLOW	Jetty & Pontoon
58391/2020	01-07-2020	104 Reeves St	NARARA	Freestanding Garage
57832/2020	24-06-2020	66 Tramway Rd	NORTH AVOCA	Alterations & Additions to Existing Dwelling (Amended Application)
284/2020	30-06-2020	8 Fern Rd	OURIMBAH	Shed (Amended Application)
443/2020	29-06-2020	7 Pacific Hwy	SAN REMO	Shed & Tree Removal
56407/2019	29-06-2020	10 & 12 High St	SARATOGA	Subdivision Creating 5 Residential Allotments (2 Existing Allotments into 5 Allotments), Demolition of Existing Dwelling & Ancillary Structures & Associated Easement to Drain Water through Lot 132 DP 27245.
57561/2019	25-06-2020	234 Terrigal Dr	TERRIGAL	6 Town Houses
58520/2020	29-06-2020	16 Ena St	TERRIGAL	Subdivision Strata
58643/2020	30-06-2020	9 Painters Ln	TERRIGAL	Subdivision Strata
436/2020	01-07-2020	155 - 163 The Entrance Rd	THE ENTRANCE	Partial Demolition of Existing Building
483/2020	30-06-2020	5 Fifth Ave	TOUKLEY	Alterations & Additions
475/2020	29-06-2020	221 Tumbi Rd	TUMBI UMBI	Carport
469/2020	29-06-2020	7 Hansens Rd	TUMBI UMBI	Swimming Pool & Associated Safety Barriers
50925/2016	25-06-2020	91 Pozieres Ave	UMINA BEACH	New Residential Aged Care Facility - 120 Beds, 3 Storey Building (JRPP) (Amended Application)
58109/2020	30-06-2020	433 Ocean Beach Rd	UMINA BEACH	Multi Dwelling Housing - 6 Unit Development

Register to use the NSW Planning Portal

Looking to lodge a development application, complying development application, or a construction, sub-division and occupation certificate? Visit **centralcoast.nsw.gov.au/NSWPlanningPortal** for more information and to register for the NSW Planning Portal



No	Date	Address	Suburb	Proposed Development
58315/2020	24-06-2020	58 Yarrabin Rd	UMINA BEACH	Rear Addition, Internal Alterations & Front Porch
58403/2020	02-07-2020	20 Greenhaven Dr	UMINA BEACH	Deck Extension
58431/2020	24-06-2020	111 Karingi St	UMINA BEACH	Swimming Pool
58622/2020	02-07-2020	8 Loxton Ave	WAMBERAL	Alterations & Additions to Existing Dwelling & Swimming Pool
129/2019	03-07-2020	1 -13, 15 - 35 Warnervale Rd & 95 - 105, 107 - 171 Virginia Rd	WARNERVALE	Subdivision (158 Residential Lots, 1 Commercial Lot, 14 Residue Lots & Wildlife Corridor).
961/2018	30-06-2020	55 Guardian Rd	WATANOBBI	Dwelling & Detatched Studio (Amended Application)
432/2020	04-07-2020	49 Watanobbi Rd	WATANOBBI	Dual Occupancy (Attached) & 2 Lot Torrens Title Subdivision
37044/2009	30-06-2020	256 Blackwall Rd	WOY WOY	Dwelling Addition - Demolish Main Bedroom, Laundry & Garage & add 3 Bedrooms, Study, Laundry & Carport
58353/2020	30-06-2020	70 Moana St	WOY WOY	Dwelling Addition
58420/2020	26-06-2020	9 Joyce Ave	WYOMING	Relocate Bathroom, Living Room Addition & New Deck
555/2020	30-06-2020	68 Springall Ave	WYONGAH	Shed

Complying Development Certificates

No	Date	Address	Suburb	Proposed Development
278/2020	03-07-2020	81 Fairmont Bvd	HAMLYN TERRACE	Dwelling
272/2020	02-07-2020	87 Fairmont Bvd	HAMLYN TERRACE	Dwelling
282/2020	02-07-2020	23 Mountain View Dr	WOONGARRAH	Screened Enclosure

Development Applications

The following Development Applications are notified for public comment and can be viewed online at **centralcoast.nsw.gov.au**

Written submissions close: 14 August 2020

No	Address	Suburb	Description
58697/2020	14 Springwood St	BLACKWALL	Demolish Existing Dwelling & Construct 3 Unit Multi Dwelling Housing Applicant - KM Design Partners
49179/2016	65 Donnison St W	GOSFORD	Residential Flat Building 50 Apartments (Amended Application)(Re-Advertised) Applicant - CKDS Architecture Pty Ltd
49479/2016	60 - 62, 64 Hills St	NORTH GOSFORD	Residential Flat Building 75 Units & Demolition of Existing Dwellings (Amended Application) Applicant - SLD Development Two Pty Ltd
993/2019	17 Burns Rd	OURIMBAH	Section 82(A) Review of Determination - Boarding House (Comprising 2 Buildings, 18 Double Rooms & Caretakers Room) & Associated Works Applicant - Urbanesque Planning Pty Ltd

Integrated Development

Written submissions close: 7 August 2020

No	Address	Suburb	Description
590/2020	255 Hansens Rd	TUMBI UMBI	2 Attached Dual Occupancy & Subdivisions Applicant - Acrow Investments Group Pty Ltd. The application has been made for the development consent under the Environmental Planning & Assessment Act 1979. Approval is also sought from NSW Rural Fire Service.
626/2020	64 Boyds Ln	WYONG CREEK	Boundary Adjustment & Consolidation of 4 Lots into 2 Applicant - Everitt & Everitt Consulting Surveyors Pty Ltd. The application has been made for the development consent under the Environmental Planning & Assessment Act 1979. Approval is also sought from NSW Rural Fire Service.

Central Coast Council is required to comply with the requirements of the Government Information (Public Access) Act 20019 which requires submissions on Development Applications to be published on Council’s website. In order to maintain privacy, all submissions lodged using Council’s DA Submission Form or online portal will have personal contact details and signature redacted. Submissions received not using Council’s DA Submission Form or via the online portal will be published in full. Your submission may also be reproduced in full in Council reports or in Court proceedings.

Council Offices are currently closed to the public. Customer service continues via phone 1300 463 954

Association re-opens Wagstaffe Hall

The **Wagstaffe-Killcare Community Association** has re-opened the **Wagstaffe Hall** to community use after the relaxation of coronavirus restrictions.

However, precautionary practices will be required and enforced by the association.

"Our regular hirers have been informed of requirements and may resume activities once they have made arrangements with their respective groups," said association president Mr Mike Allsop.

"Some may choose to hold off for a little while to see how the general situation develops, but that is fine.

"We are starting to see further event enquiries and inspections

ramp up as well, and these will all be made well aware of the various requirements in place currently.

"These may be eased further closer to their event time, but all are very conscious of doing the right thing.

"The hall itself has had some maintenance work undertaken by a band of volunteers led by Ian Bull.

"Ian and Dave Loker and Ken Tough have done a sterling job for us."

The association's annual meeting will be held in the hall at 7:30 pm tonight (Monday, July 13), where the committee for the coming year will be elected.

SOURCE:
Newsletter, 4 Jul 2020
Mike Allsop, WTKCA



Wagstaffe Square revitalisation continues

Work to revitalise Wagstaffe Square, organised by the Wagstaffe to Killcare Community Association, is continuing.

The work has centred around the garden patch that surrounds the paperbark tree in the centre of the square as well as the bus stop a little further down Wagstaffe Ave.

The addition of a sculpture

to the garden is currently being organised with the community encouraged to contribute ideas for the final design.

Dirt that caked the bus stop has been hosed off, followed by a sanding.

Local artist Ms Virginia Henderson is completing a mural on the inside of the bus stop.

"She has been entertained by

the interest of passing pedestrians, and school kids from the bus once classes started again," said association member Ms Helen Menzies.

"All of us have been reminded yet again, in a world that's chaotic, how lucky we are to live where we live."

Source:
Newsletter, 4 Jul 2020
Helen Menzies, WTKCA

"LIVE LIFE YOUR WAY,"

**Independent living units
from \$250,000***

**Phone 02 4344 9199 to
book a tour today**

Peninsula Village | 91 Pozieres Ave Umina Beach
Cooinda Village | 2-18 Neptune St Umina Beach

peninsulavillage.com.au

* Conditions apply



 **Peninsula**
VILLAGES
Your Life, Your Choice, Our Communities



COME IN FOR A FREE ASSESSMENT

COSMETIC DENTISTRY

- DENTAL IMPLANTS
- SINGLE TOOTH REPLACEMENT
- FULL MOUTH REHABILITATION
OVER 4-6 IMPLANTS
- IMPLANT SUPPORTED DENTURES

WE ACCEPT HOSPITAL VOUCHERS AND VETERAN AFFAIRS

NO GAP

Exam and Clean appointment for Private Dental Health Insurance patients. Not with a Health Fund?
Just pay \$179 Includes FREE Xrays worth \$160 Full Comprehensive Exam, Clean and Polish, OPG X-rays, Treatment Planning and Fluoride

A whiter brighter Smile in one hour PHILIPS Zoom White speed in chair teeth whitening special - only \$595 (normally \$950)

NOW ACCEPTING  **zip|money**

0% INTEREST ON PAYMENT PLANS



Gosford Dental Lifeline

We provide reasons to smile

**BOOK
ONLINE**

Ph: 4323 7007

PORCELAIN VENEERS | FREE CONSULTATION | INVISALIGN

Bulk Billing
\$1,000 Free Dental Care for children age 2 to 17 - Ask us for the Details



Dr. Meena Gambhir



Dr. Namita Mehta



Dr. Dolly Soni

 **HICAPS**
Fast claims... on the spot

 **medicare**

Saturday Appointments Available - We accept Veteran's Affairs patients
Shop 1, 201 Mann Street, Opposite Gosford Train Station, Gosford 2250
gosford@dentallifeline.com.au | www.dentallifeline.com.au

GOSFORD - BONDI - HORNSBY

*** OPENING SOON IN MAITLAND ***

Tesch calls for funding for mental health organisation

Member for Gosford Ms Liesl Tesch has called for continued funding for Youth Arafmi, an organisation which supports people caring for a family member with mental illness.

"These people care for a family member who has been affected by or lives with a mental illness including anxiety, depression, bipolar disorder, schizophrenia and other forms of distress, or is affected by mental illness in their family in some other way.

"Arafmi provides needs assessments, counselling, advocacy as well as liaison and referral to other services."

"Arafmi funding finished at the end of June with no organisation ready to take its place and no handover for clients, leaving vulnerable individuals and families without support."

Ms Tesch said the cuts were short-sighted and would have flow-on effects for individuals and families.

"Every dollar invested in early intervention and improving mental health creates social and economic benefits," she said.

Central Coast Local Health District chief executive Dr Andrew Montague said there had been no cuts to youth mental health funding on the Central Coast.

"The District is committed to supporting the health and wellbeing of children and young people with a mental illness," he said.

But the District was calling for expressions of interest from organisations to provide clinical

therapy services.

"Arafmi is welcome to respond to the expression of interest when released," Dr Montague said.

Parliamentary Secretary for the Central Coast Mr Adam Crouch has expressed support for the tendering process.

"Arafmi has been invited to submit an expression of interest to perform this work on behalf of Central Coast Local Health District.

"This is the normal process and I absolutely have faith in the ability of Dr Montague and his team to make decisions that put our region's health care needs first," Mr Crouch said.

SOURCE:

Media release, 30 June 2020

Liesl Tesch, Member for Gosford

Media statements, 26 Jun 2020

Andrew Montague, CCLHD

Media release, 3 Jul 2020

Adam Crouch, PS for CC

Shopping centre donates \$3500 to community nurses

A local shopping centre has decided to donate \$3500 to Woy Woy community health nursing teams.

Deepwater Plaza marketing manager Ms Jodie Elkin said the money will go to teams they have identified as providing a comprehensive service aiming to assist clients to remain in the security and comfort of their own home during periods of illness or acute disability.

Ms Elkin said: "Community health nurses work with clients and their carers to help prevent disease, maintain health and treat

any existing health problems.

"The teams make a real difference to the care and experience of patients and their families where they are most comfortable – in their homes.

"Visiting a patient's home also gives the community nursing teams the opportunity to assess and assist if the need arises and act accordingly.

"The teams focus on the promotion and maintenance of optimum health.

"From dressing a wound on a daily basis to holding the hand of someone having a tough day, they are there for the community.

"And they work 365 days a year through rain, hail, sunshine and even pandemics"

As part of a Thank You Project, which will run until Sunday, August 2, customers and retailers will be invited to share a message of thanks.

Deepwater Plaza centre manager Ms Marcelle Proper said the project was a way of allowing the community to give thanks.

She said the intention of the project was to acknowledge the efforts of volunteers, teachers, retail workers, doctors, nurses, carers and emergency service personnel who have faced bushfires, drought, wild storms, floods and coronavirus in 2020 already.

"We invite the local community to share their message of support and appreciation towards the many essential workers that have proudly served our community so well this year," Ms Proper said.

Source:

Media Release, 8 July 2020
Jodie Elkin, Deepwater Plaza

GRAB A QUICK MEAL TODAY

STARTING FROM \$2.00

FREE DELIVERY

0410525153

HEAT'N'EAT meals are cooked to order.

Gluten Free meals Available



336 Trafalgar Ave, Umina

Why pay for treatment?
We offer
100% BULK BILLING

For all EPC Plans

Remember to ask specifically for Alan Wigney when having your care plan done.

We also do DVA and Pensioner Discounts!

For all aspects of podiatry, call us on 4341 4704

Position Vacant

Sympathetic carer/s to assist old lady to stay at home in Umina.

Part or full time, any days.

Can be female, male, or married couple can share.

Send expressions of interest to Alison, PO Box 1056, Gosford 2250

SOUTH STREET DENTAL

WE REMAIN OPEN DURING THE CORONAVIRUS CRISIS

Mario

Reznik

BDS (Hons) Syd

Dip.Clin.Dent (Implants) Syd

Dental Surgeon

Eddie

Reznikas

Reg.Dental Technician

Dentures

- Teeth for Life • Cosmetic Smiles • Teeth Whitening • Children and Adults
- Complex Reconstruction • Implants • Dentures

52 South Street Umina Beach

4344 6699

Aged care executive says bonus splits workforce

Peninsula Villages chief Mr Shane Neaves has criticised the Federal Government's Aged Care Retention Bonus Grant, saying it is insufficient and has split the aged care workforce by omitting some workers from the benefit.

"The additional funding promised by the Government was to support and help the sector to

stay strong, including a Retention Bonus Grant for aged care workers," Mr Neaves said.

"But the Commonwealth will only offer financial support to 'direct care' workers.

"Any management, human resources or workplace culture specialist will reveal that the promotion of equality, teamwork and an engaged workforce will lead to increased productivity,

retention and success.

"The Government's Retention Bonus for Aged Care splits the most important factor in providing holistic care by dividing the workforce into those rewarded and those not.

"It does this at a time when everyone needs to work as a team and be acknowledged for the important role they play in providing holistic care.

"I openly invite the Government to address the 'non-direct care' workers who have risked their own personal safety to work in the aged care sector and provide important interaction with our residents as to why they aren't being rewarded.

"Only recognising one side of the sector is poor form."

Mr Neaves said staff not entitled to the bonus included: the laundry supervisor, who deals daily with infection, heavily soiled linen and

resident's personal items; the environmental services worker, who maintains residents' rooms and common areas, ensuring a clean and safe environment; the grounds manager who provides gardens and grounds to encourage outdoor activity; the catering service, which provides nutritious menus; the maintenance officer, who looks after the facility; and the receptionist, who provides high level assistance to residents and their families.

Mr Neaves said all these services played an extremely important role in the direct care of residential aged care residents.

"If these roles weren't all involved in the residents' lives, holistic care would be significantly compromised," he said.

"The aged care sector in Australia has worked hard and done an incredible job to protect

our older Australians, despite all the extra hard work and the administrative burden that has been added due to the Covid-19 pandemic - to an already overburdened and underfunded sector."

But Member for Robertson Ms Lucy Wicks said the aim of the payment was to encourage direct care workers, who were providing clinical care and personal care and allied health workers to remain employed in residential and home care during the pandemic.

"The focus of this measure is on the retention of direct care workers recognising the particular role they play in caring for individuals," Ms Wicks said.

"For residential aged care, workers registered nurses, enrolled nurses and personal care workers who are directly in contact with residents to assist with dressing, showering, wound management, medication, movement, feeding, hygiene and grooming or similar direct care activities are eligible.

"The intent of the measure is about their usual role.

"If a staff member spends one hour a day providing direct care then this time is eligible; if they are only providing broad assessment processes, advice and office work then that is deemed ineligible.

"Nurses performing an administrative role such as ACFI assessments will be ineligible for the payment."

Ms Wicks said in addition to the retention bonus, the Government had committed \$78.3M in temporary additional funding for residential aged care providers to support additional costs and workforce supply pressure resulting from Covid-19.

"Aged care providers may choose to use some of this funding to support workers not eligible for the retention bonus," she said.

SOURCE:

Media release, 30 June 2020

Shane Neaves, Peninsula Villages

Media statement, 6 July 2020

Lucy Wicks, Member for Robertson



TOTAL HOSE & FITTING SERVICE
POWER STEERING HOSE MADE IN UNDER 2 HRS*
CALL 4355 4908
24HR SERVICE AVAILABLE
SERVICE CENTRE LOCATED AT WYONG
SERVICING ALL AREAS OF THE CENTRAL COAST
* SUBJECT TO PARTS AVAILABILITY

Providing Residential Aged Care for over 30 years

BlueWave Living is a not-for-profit, community owned organisation offering permanent residential care, dementia specific care and respite accommodation.

- Registered Nurse on site 24/7
- All meals cooked fresh on the premises
- Comprehensive Activities Program
- On site services – Health & Therapy



**BOOK
A TOUR.**



Phone 4344 2599

6 Kathleen Street,
Woy Woy NSW 2256

www.bluewaveliving.org.au

ADVERTISEMENT

Adam CROUCH MP

Member for Terrigal

Please protect our community...
follow the social distancing rules.

Stay up-to date: go to nsw.gov.au or call 13 77 88

Authorised by Adam Crouch MP, Shop 3 Fountain Plaza, 148-158 The Entrance Road, Erina NSW 2250, produced using parliamentary entitlements.



Students celebrate International Mud Day

Students of Woy Woy Public School's Guliyali preschool held a number of activities to celebrate International Mud Day on Monday, June 29.

Early childhood teacher Ms Whitney Williams said the day involved both Guliyali preschool classes.

"The children enjoyed a range of experiences that included an animal mud pit, cooking in the mud kitchen, mud dough with natural materials and mud masks in the mud salon," she said.

"Apart from being a whole lot of fun, mud provides children with so many learning opportunities across all developmental domains.

"The children have been making boats and testing them in water.

"This led to nd discoveries about what materials are best used in water to help keep their vessel afloat."

SOURCE:
Newsletter, 3 July 2020,
Whitney Williams, Woy
Woy Public School.

School planning welcomed

A new school planning exercise introduced by the Department of Education has been welcomed by Woy Woy Public School principal Ms Ona Buckley.

"The new plan will be called a Strategic Improvement Plan and will run over a four-year timeframe," she said.

"The school will be conducting a situational analysis."

Ms Buckley said this would determine where the school was now and where the school wanted to be, and would ask the question: "How good can we be?"

"Students, parents and staff will be consulted for opinions, suggestions and input.

"Data analysis will drive

projections of future academic targets and student support.

"This process will start in Term 3 this year and the plan will be finalised at the end of Term 1 next year.

"This will be an exciting and worthwhile process as together we will strive to improve best practice and best results for our Woy Woy Public School students."

Ms Buckley said a staff development day on July 20 would start with a live stream from the Department of Education on "School Excellence in Action".

This would explain to staff how school planning would be done in the next planning cycle from 2021 to 2024, she said.

The day will also include a session on "Trauma-Informed

Practice" by guest presenter Mr Bruce Donaldson.

Ms Buckley said: "This is timely given the very different and difficult situation we find ourselves in this year with the world wide pandemic.

"Many of us and our children are feeling the effects of what has been happening around us and teachers are aware our students can be suffering below the surface.

"This session will help teachers understand how this may be affecting students and what measures, ideas and interventions can best support them through this time."

Other sessions on the day will be led by staff.

A session will be held on the school's iPad bank, the apps that are for available, and connecting

with curriculum delivery in classrooms.

Another session will be held on "Functional Behaviour Assessment".

Ms Buckley said: "This will include how to write an appropriate Individual Education Plan for students who need differentiation so they can successfully access the curriculum at their level and pace.

"Teachers have the most impact on the learning of students in their care and it is extremely important to update and increase their skills to best support our students."

SOURCE:
Newsletter, 3 Jul 2020
Ona Buckley, Woy Woy
Public School

Search finds no asbestos contamination

A search of Umina Beach Public School grounds has found no asbestos-contaminated material.

The investigation was carried out at the school by an independent hygienist appointed by the Department of Education,

after material containing bonded asbestos was suspected of being found in the school grounds.

Following the inspection, the school received clearance certificates and was open for use by students and staff.

"The health, safety, and well-

being of the school and the local community is our highest priority," parents were told in a circular from the Department.

"Thank you for your understanding regarding these investigations."

Parents were told that bonded

asbestos was asbestos attached to other material such as cement or vinyl and could not be crumbled by light pressure.

SOURCE:
Letter, 29 June 2020
School Infrastructure, NSW
Department of Education

birds wildlife fish dogs cats

PAWS ON THE COAST

small animals

PET FOOD, ACCESSORIES, DAY SPA & GIFTWARE

237-239 WEST ST UMINA BEACH - 4341 4237



DOGGY DAY SPA

DOG GROOMING, WASHING & NAIL TRIMMING

226 West St Umina Beach

4339 7644



JOIN OUR TEAM

We're Hiring

Lois Jones Real Estate is looking for an Office all rounder to join our team.

Some property management desired but not essential.

Certificate of Registration or willing to obtain

Must be

- Highly motivated and organised
- Multi tasker for our fast paced office
- Reliable
- Happy can do attitude
- Computer skills

Please email your resume to lois@loisjonesrealestate.com or call Lois 0439 739 324



LOIS JONES
0439 739 324



JESSICA WALSH
0423 907 911



NICOLE FRENCH
0401 712 454



BETH MACKIE
0481 941 812

DEVELOPMENTS, MANAGMENTS, COMMERCIALS, RESIDENTIAL, INVESTMENT, INDUSTRIAL, AUCTION, LEASING, SALES REAL ESTATE AGENTS, AUCTIONEERS, PROPERTY MANAGERS, STOCK AND STATION AGENTS

Education

School to hold kindergarten student interviews

Umina Beach Public School will hold "kindergarten student interviews" as part of the enrolment process for next year's kindergarten classes.

"These interviews are a 10-minute meeting between the student, parents/carers and a member of staff in relation to your child beginning school," said assistant school principal Ms Liza Moulton.

"The aim of the meeting is for us to get to know your child a little better before starting the Early Birds Orientation program."

She said staff would be interested in personal interests and hobbies, motivations, friendship networks, socialisation skills, medical needs, learning needs and preschool experience.

"Once you have enrolled and provided all documents to the front office, go to the www.schoolinterviews.com.au website to make an appointment."

The school would provide a code to be used on the website.

"Please come to the front office five minutes before your time slot and check in with the front office staff."

"We are really looking forward to meeting and getting to know our new Kindergarten students."

Ms Moulton said: "Our Early Birds Orientation Program begins on Wednesday, October 14, (Week 1, Term 4) and continues for the following three Wednesdays."

"There will be a morning group from 9:30am to 11am and an afternoon group from 12:30pm to 2pm."

More information including group allocation would be posted to families in September.

Newsletter, 30 Jun 2020
Liza Moulton, Umina Beach Public School

Education Week to be shared online at Woy Woy South

Woy Woy South Public School will share Education Week with parents online between August 3 and 7.

"This year, due to the continued foreseen restrictions preventing parents from entering school grounds, we have chosen to mark the occasion by continuing to share our learning journey with our school community online," said principal Mr Matt Barr.

"The students will be involved in a number of in school activities that

will be shared with our parent body via social media.

"We are also taking this opportunity to reach out to all families in a bid to collate a short video about their home schooling experience under the theme Learning Together."

Mr Barr said: "Parents and children can recall funny or serious moments in a 30 to 60 second video."

Newsletter, 1 Jul 2020
Matt Barr Woy Woy South Public School

School sets new dates for school photographs

Ettalong Public School has set new dates for school photographs.

Photographers will visit the school on Tuesday, October 22, and Thursday, October 24, according to school principal Ms Lynn Balfour.

"Yesterday, they came to take photographs of our Kindergarten students for administrative use only."

"These photographs were booked in to be taken earlier this year but Covid-19 had other ideas."

New dates have also been set for the dental checks that were originally planned for earlier this term.

"We can now expect the dental checks to be held over three weeks

starting Monday, August 10.

"We have retained the consent forms so, at this time, we do not see any reason for further correspondence."

Mrs Balfour has also told parents: "I want to reiterate how important it is for children to read each day and also to be read to, so they can learn to enjoy and appreciate written work."

"Literacy is the key that opens most doors in life."

"We at Ettalong Public School want every student to leave here with the best literacy skills they can possibly achieve in a primary school."

Newsletter, 30 June 2020
Lynn Balfour, Ettalong Public School

Mitronics

THE TECHNOLOGY COMPANY

NEW FINANCIAL YEAR SPECIALS

BROTHER

L3745

\$370.00
ex GST



HP

M479

\$565.00
ex GST



Rent a Konica Minolta Bizhub C227 from \$4.75 a day!

Colour printer & scanner.

Limited stock available.

BONUS DEAL

*rental over 60 months - optional fax, paper tray, extra charges apply for finisher. Free laptop only applies for KM C227 model. All prices exclude GST.

First 17 orders will also receive a FREE HP laptop!

Make an enquiry via our website www.mitronics.com.au or call us on 1300 207 122 and mention our 'new financial year sale' to redeem this offer.





We will listen to you, believe you, and help you.
There is never an excuse for violence.

1800 65 64 63
NSW Domestic Violence Line
24/7 free, confidential support.
Interpreters available.

 www.speakout.dcj.nsw.gov.au

Young Umina actor to take lead role in Kings Cross play

An 18-year-old actor from Umina will play a lead role in one of the first theatre productions to be performed after the coronavirus lockdown.

Samson Alston will play genius artist Winston in the play *The Credeaux Canvas* at the El Rocco Cafe and Theatre, Kings Cross, from Thursday, June 23.

The performances will be limited to 24 socially-distanced audience members, all advised to wear masks.

Samson, who gave up a potential career as a pro surfer to pursue acting, said the role was a dream come true.

"I moved to Bali to pursue my surfing, but I always knew I wanted to get into acting," he said.

After returning to the Coast, Samson completed a Certificate IV in Musical Theatre and began attending industry workshops.

Another young actor, Tom Kelly of Gosford, plays another lead role, Winston's flatmate Jamie.

"Tom and I go way back," Samson said.

"He's around my age and the arts scene on the Coast is small so everyone knows everyone."

"And it's great having a mate in the project," Samson said.

SOURCE

Media release, 26 Jun 2020
Geoff Sirmay, Sirmay Arts Publicity
Interview (Dillon Luke), 30 Jun 2020
Samson Alston, Umina



Samson Alston rehearses for his Sydney performance

Normal school library rules to apply next term

Students at Empire Bay Public School have been told that normal school library rules will apply next term.

"This term I have been very lenient with loan limits and loan periods to ensure students don't miss the opportunity to borrow," said school librarian Ms Jenny Chippendale.

"But next term normal rules will apply, ie two-week borrowing period."

"Students have been keeping me busy with their book requests and eager borrowing."

"I will be sending home reminder notices regarding overdue loans."

Ms Chippendale said the Premier's Reading Challenge had been changed this year.

"In brief Year 3-6 students can read 10 choice books instead of the usual five."

"They can include collaborative reads an online read alouds, instead of having to read all books independently."

"There are no significant changes for K-2 as their records are managed at school."

Newsletter, 18 Jun 2020
Jenny Chippendale, Empire Bay Public School

AussieRV
& CARAVAN REPAIRS
1800 287 787
www.aussiervs.com.au

Why wait months for your Caravan or Motorhome to be repaired?

Aussie RV & Caravan Repairs is a National repairer specialising in Caravan and Motorhome repairs.

Offering on-site insurance assessments and a valet pick up and drop off service for all insurance work. All repairs are guaranteed and carried out by qualified technicians.

Visit us at
WWW.AUSSIERS.COM.AU
and view our gallery or call us on **Ph: 1800 287 787** with your insurance company & claim number and we'll handle the rest.

YOUR FINANCIAL INVESTMENT REQUIRES PROTECTION!

Umina Beach Markets
90 STALLS
SYDNEY AVE 9AM-2PM
THIRD SUNDAY MONTHLY
FREE SHUTTLE BUS
WOY WOY WHARF - ETTALONG WHARF - ETTALONG DIGGERS - BUNNINGS WEST ST
• JUL 19 • OCT 18
• AUG 16 • NOV 15
• SEP 20 • DEC 20

2ND SUNDAY MONTHLY
9AM-2PM
HANDMADE
ON THE COAST
WOY WOY

NEW LOCATION AT WOY WOY FORESHORE
• AUG 9TH • OCT 11TH
• SEP 13TH • NOV 8TH
• DEC 13TH

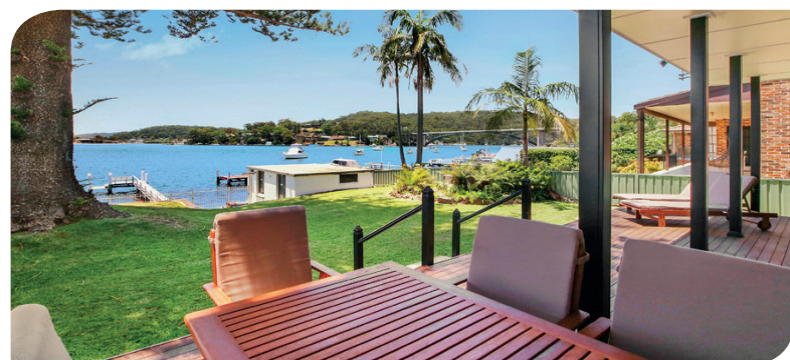
BRICK WHARF RD

Umbala Events
www.UmbalaEvents.com

ACCOM
HOLIDAY RENTALS

Ettalong office: 02 4344 6152
www.ettalong.accomholidays.com
Kilcare, Daley's Pt, Ettalong, Umina and Pearl Beach, Patonga and Woy Woy

The Trusted name in Holiday Management and Rentals



Art & Culture

Central Coast Art Society
Weekly paint-outs
Tues 0428 439 180.
Workshops 9.30am 1st & 3rd
Wed Gosford City Art Centre
4363 1156.
Social Meetings 1.30pm 4th
Wed for demonstrations
4325 1420
publicity@artcentralcoast.asn.au

Central Coast Handweavers, Spinners and Textile Arts Guild
Spinning and weaving,
patchwork and quilting, felting
and other fibre and fabric
crafts, community quilting
bees
Day and Night Groups
4325 4743
www.cottagecrafts.net.au

Ettalong Beach Art & Crafts Centre
Adult classes in Pottery
Watercolours, Oils, Acrylics,
Pastels, Silvercraft,
Patchwork & Quilting
0412 155 391
www.ebacc.com.au
ebacc_email@gmail.com

Hospital Art Australia Inc.
Meet every Tue and Fri
9am-2pm - 109 Birdwood
Ave, Umina - Painting and
Canvas drawing. Volunteers
welcome
0431 363 347
hospitalartaustalia.com.au

Community Centres

Peninsula Community Centre
Cnr Ocean Beach Rd &
McMasters Rd Woy Woy
Activities, programs and
support groups for children,
teens, adults and seniors
including occasional care,
playgroups, dance classes,
karate, fitness classes, youth
services, gambling solutions,
internet kiosk and social
groups.
4341 9333
www.coastcommunityconnections.com.au

Empire Bay Probus Club
Friendship, fellowship,
and fun in retirement.
Very active club, outings,
excursions, dining - 3
times a month
1st Thur 1.30pm
Empire Bay Progress Hall
Visitors Welcome.
0414 280 375

Ettalong 50+ Leisure & Learning Centre
Cards, Chess, Choir, Creative
Folk Art, Dancing, Darts,
Handicraft, Handicrafts,
Indoor Bowls, Leatherwork,
Line Dancing, Mahjong,
Painting, Rummikg,
Scrabble, Table Tennis,
Ukulele, Women's Shed,
4304 7222

Brisbane Water Caravan Club
Caravans Wanted to
join and have fun
Gosford NSW
Your owners are most
welcome too
https://bwcaravanclub.
wixsite.com/bwcc
Contact Joe
4344 4363

Central Coast Community Legal Centre

Not for profit service providing
free legal advice.
Monday to Friday
9am to 5pm
4353 4988
contact@centralcoastclc.org.au

Point Clare Community Hall

Community Garden -
Playgroup
Craft and Exercise Groups
Function or Meeting Hire
Managed by Gosford
Regional Community
Services
Enquiries regarding hire to
4323 7483
accounts@gosfordcommunity.org.au
www.gosfordcommunity.org.au

Community Groups

ABC "The Friends"
Support group for Public
Broadcaster.
Aims: Safeguard ABC's
independence, adequate
funding, high standards.
Meetings through the year +
social mornings
Well-known guest speakers
0400 213 514
www.fabcnsw.org.au

Central Coast Caravanners Inc
3rd Sun - Jan to Nov
Visitors - New Members
welcome, Trips Away, Social
Outings, friendship with like
minded folk -
Details from Geoff
0447 882 150

CENTRAL COAST 50+ SINGLE & SOCIAL GROUP

Fun And Friendship With an
Excellent Monthly Program of
Dinner, Dancing, Scrabble,
Cards, And Tenpin Etc.
So Call -
0437 699 366
0407 003 214

CCLC Indoor Bowls

Mon - Ladies Social
Wed Night - Mixed Social
Sat - Mixed Social
New members welcome -
tuition given
level 2 Central Coast
Leagues Club
4334 3800

Peninsula Village Playgroup

Carers, Grandparents,
parents & children
'Intergenerational Playgroup'
Tues 10-11.30am
4344 9199

Peninsula School for Seniors

Community Centre,
McMasters Road, Woy Woy
Discussions, rumikin, craft,
history, walks, & coach trips
Tues, Wed, Thur
4341 5984 or 4341 0800

The Krait Club

Community Centre - Cooinda
Village, Neptune St, Umina
10.30am For seniors. Gentle
exercises, quizzes, games,
social activities, guest
speakers, entertainment and
bus trips - 4344 3277

Umina Beach Men's Shed

Men share a variety of tools,
pursue interests and hobbies,
spend time with other men
and learn new skills
Darrell 4342 9606

Volunteering Central Coast

Refers potential volunteers
to community orgs. Supports
both volunteers and
community orgs. Training for
volunteers & their managers.
4329 7122
recruit@volcc.org.au

Wagstaffe to Killcare Community

Protect and preserve the
environment & residential
nature of the Bouddi
Peninsula and to strengthen
community bonds
2nd Mon, 7.30pm
Wagstaffe Hall 4360 2945
info@wagstaffetokillcare.org.au

Wine appreciation club

Central Coast Leagues Club
2nd Wed
Taste and be educated on
wine by various wineries.
Purchases not mandatory
Keith - 0420 722 529
Fraser - 0416 831 088

Entertainment

Frantastics Choir Inc

High quality variety
entertainment available for
matinee
bookings at your venue.
New members welcome.
1pm Mondays during school
terms
Walter Baker Hall, Woy Woy
4343 1995
www.frantastics.org

LEARN TO DANCE

Social ballroom dancing for all
ages, all you need is a desire
to learn and dance,
no partner required.
meet every Tues - St Luke's
Anglican Church, 7pm
& 15 Lorraine Ave
Berkeley Vale, 2:30pm
Anne - 0409 938 345
anneglazier@yahoo.com

Health Groups

AI-Anon

If someone's drinking is
causing you problems...
AI-Anon can help
1300 252 666
Meetings Sat 2pm
Woy Woy Hospital
Ocean Beach Road

Arthritis NSW

Woy Woy support group
Ettalong Bowling Club
Springwood Road Woy Woy
3rd Tues 10.30am
1800 011 041

Better Hearing Australia - Central Coast

Hea ring loss management
Support and educational
groups providing practical
experience and confidence
Learn the benefits of hearing
aids - 4321 0275

BlueWave Living

Woy Woy Community
Aged Care facility providing
residential aged care to the
frail aged.
Permanent and respite care
accommodation available.

Information 2nd and 4th Wed
- 10am - 4344 2599
reception@bluewaveliving.org.au

Central Coast Parkinson's Support Group

We aim to help individuals
and their families better
manage living with
Parkinson's Disease
Guest speakers are a regular
feature of our meetings.
2nd Tue - 1.30pm
1800 644 189

GROW Support Groups

Small friendly groups formed
to learn how to overcome
anxiety, depression and
loneliness and to improve
mental health and well-being.
Anonymous, free and open
to all. Bring a support person
if you like. Weekly meetings
at Woy Woy, Bateau Bay and
Wyong
1800 558 268
www.grow.org.au

Meals on Wheels

Delicious meals delivered
free - Join us for a midday
meal - Help with shopping
and cooking classes
4341 6699

Mary Mac's Place

Providing hot, freshly cooked
meals - Mon to Fri 11am-1pm
with support, info & referrals
4341 0584
marymacs@woywoycatholic.org.au

Overeaters

Anonymous (OA)

12-step fellowship for those
with eating disorders. No
dues, fees, or weigh-ins.
Peninsula Com. Cntr, cnr. Mc
Masters Rd & Ocean Beach
Rd. Woy Woy, Fri 8pm
0412 756 446
www.oa.org

Peninsula Village Wellness Centre

Offering holistic and
complementary therapies
including aromatherapy,
massage and music therapy
4344 9199

Peninsula Village Meals

Delivered daily to your door
Nutritious, great for the elderly
4344 9199

Peninsula Village Carer's Support Group

For carers of loved ones with
dementia - 1st Wed - 10 to
11.30am
Paula 4344 9199

Prostate Cancer Support Group (Gosford)

Last Fri, Terrigal Uniting
Church, 380 Terrigal Drive,
Terrigal
9.30am to 12 noon
4367 9600
www.pcfa.org.au

Peninsula Lighthouse

Guiding you through the
storm - Your only local mobile
counselling service
Supporting ALL people
suffering from Domestic
Violence offering a holistic
program making our
community safer.

Counselling services available
Monday @ Ettalong Baptist
Church Barrenjoey Room ,

book an appointment:
0417 472 374
penlighthouse@gmail.com
www.peninsulalighthouse.info/

Schizophrenia and Bipolar Fellowship

For Schizophrenia/Bipolar/
Mental Health sufferers,
family, carers and friends. .
1st Thur - 1pm Room 3
Uniting Church Donnison St
Gosford
4344 7989 or 4368 2214

Woy Woy Stroke Recovery Club

Everglades Country Club
2nd Tues 11am
Company, up-to-date info,
hydrotherapy, bus trips
1300 650 594

Music

Brisbane Water Brass
Brass Band entertainment
for the community playing all
types of popular music.
Rehearsal every Wed
8pm -10pm
0419 274 012

Coastal a Cappella

Award winning women's a
cappella chorus.
Music education provided.
Rehearsals Tuesday 7pm @
Red Tree Theatre Tuggerah.
Performance opportunities.
Hire us for your next event.
0412 948 450
coastalacappella@gmail.com

Soundwaves

A cappella harmony for Men
- new members welcome.
Rehearsals Mondays 7.00pm
to 9.30pm Central Coast
Leagues Club, Dane Drive,
Gosford
Ring Max on 4324 3631
or Kieran 4324 1977

Troubadour Central Coast Folk, Traditional & Acoustic

Music and Spoken Word
Concerts, Ukulele meets, and
Sessions
4th Sat 7pm CWA Hall Woy
Woy 4342 6716
mail.info@troubadour.org.au

Political Groups

Australian Labor Party
Political discussions, national,
state and local government
issues

Umina Ettalong Branch

2nd Mon Umina Beach
Bowling Club 7.30pm 4342
3676

Ourimbah/ Narara Branch

Function Room, Grange
Hotel, Wyoming
7.30pm 1st Mon
0410 309 494
kyle.macgregor@hotmail.com

Woy Woy Branch

Everglades Country Club
7.30pm 2nd Mon

Peninsula Day Branch

1pm 2nd Mon
CWA Hall Woy Woy
4341 9946

Liberal Party of Australia

Woy Woy Branch
4th Thur 6.30pm
Club Umina, Melbourne Ave,
Umina Beach
woywoyliberals@gmail.com

Central Coast Greens

Active regarding ecological
sustainability, social &
economic justice, peace &
non-violence, grassroots
democracy & getting
Greens elected
3rd Thur
centralcoast.nsw.greens.org.au
centralcoastgreens@gmail.com

Service Groups

Lions Club of Woy Woy

Everglades Country Club
3rd Monday of each month
Make new friends and
have fun while serving your
community.
0478 959 895

Rotary Clubs

International service club
improves lives of communities
in Aust. & o/seas. Fun-filled
activities, fellowship and
friendship.

Rotary Club of Kariong

Phillip House, 21 Old Mount
Penang Rd, Fri 7.15am
4340 4529

Rotary Club of Umina Beach

Wednesdays 6.30pm
Everglades Country Club
0409 245 861
curleys@ozemail.com.au
0409 245 861

Rotary Club of Woy Woy

Tues 6pm Everglades
Country Club.
Don Tee 0428 438 535

Special Interest

Bridge

Duplicate Bridge Mon Tue
Thur Fri Sat-12.15pm
& Wed 9.15am
Brisbane Water Bridge Club,
Peninsula Community Centre
93 McMasters Rd.
Woy Woy
www.brisbane-water-bridge-club.org

Cash Housie

50 Games every Sat night
Peninsula Community Centre,
McMasters Rd, Woy Woy,t
7.30pm. Proceeds to Woy
Woy Catholic Parish.
www.cashousie@hotmail.com

Central Coast Family History Society Inc.

Tue to Fri 9.30am - 2.00pm
First Sat 9.30 - noon
Thur 7pm - 9pm
Other times by appointment.
4324 5164
www.centralcoastfhs.org.au
admin@centralcoastfhs.org.au

Central Coast Tenants' Advice and Advocacy Service

Help with issues with
landlords & real estate
agents? Free telephone
advice and advocacy for
all tenants and residents in
residential parks.
4353 5515
cctaas@hotmail.com

Central Coast Rescue Unit

Marine Education Courses.
Radio Licenses, Boat
Safety & Boat License
& PWC License Tests,
Navigation, Seamanship and
Meteorology.
4325 7929
www.vmrcc.org.au

Central Coast Soaring Club Inc

Gliding Club, Learn to fly,
Instruction FREE to members
Come and have an Air
Experience Flight
All Welcome
14 and up for Training
Flying at Bloodtree Road
Mangrove Mountain Thur,
Sat, Sun (weather permitting)
0412 164 082
0414 635 047
www.ccssoaring.com.au

Ettalong Toastmasters

We provide a supportive and
positive learning experience in
which members are
empowered to develop
communication and
leadership skills, resulting in
greater self-confidence and
personal growth
2nd & 4th Tue, 7:30PM,
Ettalong Diggers
0408 416 356

Peninsula Environment Group

Environmental projects,
(incl. Woytopia),
Woy Woy community garden,
social events, workshops,
organic food buying group
www.peg.org.au

Veterans

National Malaya Borneo Veterans Association

1st Sat (except Jan) 10.30am
Umina Club
Melbourne Avenue
Umina Beach
4342 1107

Veterans' Help Centre'

Assist all veterans &
families with pension &
welfare issues.
Mon & Wed 9am-1pm
4344 4760 Cnr Broken Bay
Rd & Beach St Ettalong.
centralcoastveterans@bigpond.com

Woy Woy Ettalong Hardy's Bay RSL

Provide help with pensions
and welfare etc.
Shop 5/382 Oceanview Rd
Ettalong. Tues & Thurs 9am
to 1pm 4341 2594

Women's Groups

CWA-Umina Beach

Cnr Ocean Beach Rd and
Sydney Rd
Craft & Friendship: 1st, 3rd,
4th Wednesday at 9.30
Branch Meeting: 2nd
Wednesday at 10am
Phone: 0410324282
cwaofnswumina@bigpond.com

Country Women's Association Woy Woy

30 The Boulevard, Woy Woy
Craft & Friendship: 1st, 2nd
and 3rd Wed 10AM.
Meetings: 4th Wed 10AM.
Ph: 0411 434 785
woywoywa@gmail.com

Peninsula Women's Health Centre

Counselling, therapeutic and
social groups, workshops,
domestic violence and abuse
issues. All services by women
for women
4342 5905
www.cocwhc.com.au



Central Coast NEWSPAPERS

If you would like your Community Organisation listed here call us on 4325 7369
or see www.coastcommunitynews.com.au

Entries in the Not For Profit Community Organisations Directory are free. However, we require each organisation to
subscribe to each newspaper to ensure that someone from that organisation keeps their entry up to date. Subscription rates \$75 for 25 editions.

Help wanted for Pretty Beach bushcare

The Wagstaffe-Killcare Community Association is calling on volunteers to help the Pretty Beach Bushcare group with its work along the waterfront dog track between Pretty Beach and Hardys Bay.

The group meet every Monday at the dog track 2 - 4 pm.

"It is a small friendly group and newcomers are very welcome," said Bushcare member Ms Toni Trent.

"No experience is necessary and you will learn about native plants and how to identify and eradicate weeds.

"Any time you can give will help to rescue the native vegetation that supports the local wild life.

"We are currently targeting

bidens pilosa, commonly known as Farmers Friend.

"This weed is detested by every Bushcare volunteer and home gardener.

"There is nothing attractive about this weed.

"It is native to the Americas and is an erect densely hairy woody plant with branching habit to about 1m high.

"It has a small yellow flower and the seeds are black, about one centimetre long, with two or three barbed awns at the tip.

"These black burrs adhere to clothing, shoes, pet fur and skin.

"It is also a prolific seeder and will rapidly spread, dominating areas and squeezing out the native plants," Ms Trent said.

SOURCE:
Newsletter, July 2020
Toni Trent, WTKCA

A chance to work in the 'most incredible locations'

For Ms Tyne Hamilton of Ettalong, being a field officer for the National Parks and Wildlife Service has given her the chance to work "in the most incredible locations" and to learn "interesting and unexpected" skills.

Ms Hamilton joined the service as part of the Field Officer Traineeship Program in February, 2015.

During her traineeship, she completed a Bachelor of Environmental Science and Management at the University of Newcastle.

She has held a number of positions with the service since then, spending three years as a field officer based at the Bucketty Depot.

She then moved into the service's Enhanced Bushfire Mitigation Program at Lake

Munmorah.

She helped to maintain asset protection zones and prepare areas for hazard reduction burns across the Central Coast region.

She is now employed full-time as a technical officer as part of the program and is a trained and certified remote area firefighter.

"It's hard to summarise what a field officer does in a single sentence because the role is so diverse," Ms Hamilton said.

"We maintain walking tracks, build new visitor facilities, conduct hazard reduction burns, undertake pest eradication programs, weld broken gates, care for and protect indigenous sites and respond to wild fires.

"I love my job because I get to work outside every day in the most incredible locations and I've had the opportunity to learn some really interesting and unexpected new skills.

"There's a great culture of learning and skill-sharing at the National Parks and Wildlife Service.

"There are so many experienced and knowledgeable field officers and supervisors who have all the time in the world to help you learn.

"The work can be physically demanding but it is so rewarding to be able to fix things and ensure special places are protected for our future generations.

"A lot of people think field work is only for big, burly men – but that couldn't be further from the truth.

"The service has equipment and machinery to help with the big jobs.

"It's not about your technical skills or your physical strength – it's about your willingness to learn."

SOURCE
Media release, 22 June 2020
Media statement, 30 June 2020
Kylie Yeend, National Parks and Wildlife Service

Peninsula
COMMUNITY ACCESS

News WHERE DO YOU GET IT?

FOLLOWING IS A COMPREHENSIVE LIST OF PENINSULA COMMUNITY ACCESS NEWS PICKUP LOCATIONS. PAPERS ARE DELIVERED TO ALL OF THESE LOCATIONS ON PUBLICATION DAY.

BOOKER BAY

Booker Bay General Store
72 Booker Bay Rd
Daley's Point
The Cove Retirement Village
36 Empire Bay Dr

EMPIRE BAY

Bayside Gardens Lifestyle Village
437 Wards Hill Rd
Empire Bay Tavern
1 Poole Cl
Impact Plants Café
9 Poole Cl
United
306 Empire Bay Dr

ERINA FAIR

Service desk
Terrigal Dr
Woolworths
620-658 Terrigal Dr

ETTALONG

Ingenia Lifestyle
1 Fassifern St
Ettalong Beach Tourist Resort
189 Ocean View Rd
Cinema Paradiso
189 Ocean View Rd
IGA
396 Ocean View Rd
Ettalong Beach Newsagency
257 Ocean View Rd
Mantra Ettalong Beach

53/54 The Esplanade
Ettalong Diggers
51-52 The Esplanade
Atlantis Apartments
The Esplanade
The Box on the Water
Ettalong Beach Waterfront Reserve
Ettalong Beach Motel
46 The Esplanade
50+ Leisure and Learning Centre
Broken Bay Rd & Karingi St
Ettalong Public School
23 Karingi St

GOSFORD

Imperial Centre
171 Mann St
Masonic Centre
86 Mann St
Central Coast Leagues Club
1 Dane Dr
Gosford RSL Club
26 Central Coast Hwy

HARDY'S BAY

Hardy's Bay Club
14 Heath Rd

KINCUMBER

Kincumber Nautical Village
57 Empire Bay Dr

PEARL BEACH

Pearl Beach Cafe and General Store
1 Pearl Parade

PHEGANS BAY

Box outside RFS
Wattle Crescent

POINT CLARE

ALDI
53-59 Brisbane Water Dr

PRETTY BEACH

Pretty Beach Public School
Pretty Beach Rd

UMINA

Ettalong Bowling club
103 Springwood St
Cooinda Village
12/2-18 Neptune St
Broken Bay Parish Uniting Church
346 Ocean Beach Rd
The Bourke Road Store
174 Bourke Rd
McDonald's
430/438 Ocean Beach Rd
Caltex Woolworths
337 West St
Coles Express
1-3 Sydney Ave
Woolworths
261-275 Trafalgar Street
Corner, West St
ALDI
310 Trafalgar Ave
Coles
4 Oscar St
NRMA Ocean Beach Holiday Resort
Sydney Ave
Jasmine Greens Park

Kiosk
Peninsula Recreation Precinct, Sydney Ave
Umina Surf Life Saving Club
509 Ocean Beach Rd
Umina Beach Café
509 Ocean Beach Rd
Ocean Beach Surf Life Saving Club
176 The Esplanade
Club Umina
Melbourne Ave
Peninsula Village
91 Pozieres Ave
Umina Library
Cnr West Street and Bullion Street
Peninsula Office Supplies
296 West St
Umina Beach Newsagency
310 West St
Chemsave Chemist
299 West St
Blooms The Chemist
Shop 6/286 West St
Umina Surgery
297 West St
Yousave Chemist
315 West St
Umina Beach Public School
Sydney Ave
Lois Jones Real Estate
226 West St

WAGSTAFFE

Wagstaff Newsagency & General Store

46 Wagstaffe Ave

WOY WOY

Link and Pin
18A Railway St
Kuoch Chemist
43/45 Blackwall Rd
Ms Liesl Tesch MP
20 Blackwall Rd
Peninsula Plaza
Woy Woy
Michel's Patisserie
Peninsula Plaza
Woy Woy Library
Cnr Blackwall Rd &, Oval Ave
The Bayview Hotel
2-16 The Boulevard
Woy Woy Hotel
33 The Boulevard
Gnostic Mana Café
31 The Boulevard
Woy Woy Organics
8/23-27 Chambers Pl
Fishermen's Wharf
The Boulevard
St Vincent De Paul Society
43 The Boulevard
Woy Woy Bowling Club
186 Brick Wharf Rd
Woy Woy Rugby League Club
82 Blackwall Rd
McDonald's
7/13 Charlton St
Deepwater Plaza
Railway St
Living Choice Deepwater Court Retirement Village

25 Park Rd
Home Timber & Hardware
182 Blackwall Rd
Caltex
66 Memorial Ave
Woy Woy Public Hospital
7 Kathleen St
Boronia Court Hostel
Kathleen St
BlueWave Living-
5/6 Kathleen St
Peninsula Community Centre
93 McMasters Rd
Meals On Wheels
Ocean Beach Rd
Coles Express
50-52 Ocean Beach Road &, Rawson St
Brisbane Waters Private Hospital
21 Vidler Ave
KFC
91 Blackwall Rd
Woy Woy Public School
Blackwall & Park Rds
Peninsula Leisure Centre
243 Blackwall Rd
Woy Woy South Public School
The School Mall
Kitchener Park
Maitland Bay Dr
HammondCare
286 Railway St
Everglades Country Club
Dunban Rd

IF YOU WOULD LIKE YOUR LOCATION ADDED TO THIS LIST FOR MEMBERS OF THE PUBLIC TO ACCESS, PLEASE LET US KNOW

Classifieds

AIR CONDITIONING

ABSOLUTE COMFORT AIR

Split System Specialist

Senior Discounts

Sales Service & Installation,

All Air Conditioning brands

Fully Insured & 20+ Years Experience

Acrtick Certified

QUALITY WORK GUARANTEED

Lic252855c AU41541

DAVE 0416 770 318

AUDITING

Need your Management System Audited?

Quality. Safety. Environment, Project Management Systems

20 Years of Certified Auditing

Experience - Audit Reports

Available within One week of Audit - Assistance to rectify issues if required.

Ph: 0439 098 060

CARPENTERS

MGL CARPENTRY

Carpenter & Joiner

40yrs Experience

Decks, Pergolas, Doors, Windows etc

Fully Insured - Call Gary

0458 130 829

4341 1346

NO LABOUR & MATERIALS OVER \$5000

ELECTRICIANS

TSB ELECTRICAL & DATA

Electrical & Data

TIM BULLOCK

ALL ELECTRICAL AND DATA

RESIDENTIAL AND COMMERCIAL

0427707080

Lic: 236223C

PAINTERS

BUCELLO'S

Painting Services

Residential and Commercial

Interior and Exterior

New Work and Repaints

Free Quotes

All work guaranteed

Lic346302C

0410 404 664

wattyl

REMOVALS

Allways Moving Removals

House, office units

No job too big or too small

Affordable rates

Call for free quote

0497 800 074

0421 084 650

ANTENNAS

A Better Picture

Antenna & Digital Installations & Tuning

New home specialist

Credit cards OK

HAYWARD VIDEO

All areas

Gosford 4323 6367

Woy Woy 4344 4414

Warnervale 1800 244 456

0412 685 555

BOREWATER

Bores and Spears

Install high quality pumps and maintenance free spears, existing systems reconditioned, all work guaranteed.

Warren Greenway

Ph: 4341 7736

Mob: 0408 225 390

Lic No. DL1960

CARPENTRY - Building

over 30 years experience

Local know how - working with pride and honesty

Paul Skinner

Lic 62898c

0432 216 020

or 4339 2317

GUTTERING

ABC SEAMLESS GUTTERING

GUTTER GUARD

METAL ROOFING

WATER TANKS

ROOF RESTORATION

ALL TYPES OF GUTTERING INSTALLED

20% OFF

*CONDITIONS APPLY

A B C SEAMLESS

EST. 40 YEARS

9748 3022

www.abcseamless.com.au

IT'S A NO BRAINER!

An advertisement from this size in 20,000 newspapers from only \$25 + GST per week

Call now before the price goes up

Ph: 4325 7369

ASBESTOS REMOVAL

Asbestos Removal

Fully licensed and insured asbestos removals from houses, garages, sheds, bathrooms etc.

Ph: Tom 0422 653 794

or 4393 9890

Safe Work NSW Lic. AD212564

BRICK LAYING

Brick Laying & Concreting

All Aspects of both Trades

40 yrs Exp

Phone Greg

0456 895 943

Lic 124312c

COUNSELLING

ACT NOW COUNSELLING

SOLVE A PROBLEM. FEEL GOOD ABOUT YOURSELF AND YOUR LIFE.

Qualified, registered, private counsellor

By phone, online video, or in-person

Reasonable prices

HUGH WORRALL - MOB 0402 529 474

act.now.counselling@gmail.com

www.actnowcounselling.blogspot.com

(ACA REGISTRATION #10757)

HANDYMAN

OLD MAN EMU HANDYMAN SERVICES

Covering all your internal and external handyman jobs

FREE QUOTES

Pensioner discount

Call David: 0413 396 167

PEST CONTROL

ACCESS PEST CONTROL

ALL PESTS, ALL AREAS, TERMITE SPECIALISTS (PENSIONER DISCOUNTS)

LIC# 5092837

PH # 02 8605 6637

WILL BEAT ANY COMPETITORS QUOTE

TILING

Homes2NV

Tiling Wall & Floor Property Maintenance

0439 589 426

homes2nv@gmail.com

CLASSIFIEDS ADVERTISING RATES

Classified advertising is the cheapest form of newspaper advertising. This newspaper is also published on line on the publication date, and is also read that way by hundreds of people. All advertisements, including these classified advertising pages, appear in full on-line as an additional benefit for free.

See www.coastcommunitynews.com.au

Central Coast Newspapers' classified advertising rates are relatively much lower than in other newspapers and at the same time much larger than in other newspapers, with the minimum size being 50mm X 42mm. Approximately 15,000 copies of this newspaper are printed and distributed every week.

Personal and Not For Profit Organisations

As Central Coast Newspapers are community newspapers, the cost of advertising not for profit organisations' events is subsidised. This makes them the same rate as non business advertisements.

A mono 5cm advertisement only costs \$33. Each additional cm costs \$6.60 as does colour, and/or a photograph or a logo. Private advertisements need to be paid for at the time of booking.

Business and In Memorium rates

The minimum size of 5cm X a single column only costs \$50 + GST in mono and an extra \$10 + GST for colour, a logo or a photograph.

Classified advertisements in all 3 papers are only \$40+GST each.

Most businesses choose to advertise on an ongoing basis and discounts apply for multiple bookings, if they are paid for in full, in advance.

Having a prepaid classified advertisement run for 6 editions only costs \$250 + GST and \$50 + GST more for colour. For 12 editions, it is \$495 + GST and \$100+ GST more for colour. For 24 editions, it is only \$950 + GST and \$200 + GST for colour, a saving of \$290 + GST.

Artwork is free and advertisers are encouraged to change their advertisements frequently

ELECTRICIANS

YOUR LOCAL ELECTRICIAN

Same day service

Guaranteed

Lighting, Power Points, Phone & Data, Fault Finding,

No job too small.

Seniors Discount.

Lic number 265652C

4308 6771

BKW

Electrical Services

Lic No:248126C

Lights - Fans - Power -

Reno's - Switchboards -

Security lights -

No job too small

Call Ben on

0404 093 299

IT'S A NO BRAINER!

An advertisement from this size in 20,000 newspapers from only \$25 + GST per week

Call now before the price goes up

Ph: 4325 7369

ELECTRICIANS

Electrical & Data

TIM BULLOCK

ALL ELECTRICAL AND DATA

RESIDENTIAL AND COMMERCIAL

0427707080

Lic: 236223C

HAIRDRESSER

Sammybaillie homestudio

Specialising in Balayage and Hair Extensions

Balayage starting from \$150*

find us on instagram

sammybaillie1301@hotmail.com

*terms and conditions apply

LOCKSMITH

Matt Bell's Locksmith Service

All lock repairs

Lock installations

24 hour lockout service

Pensioner discount

ML 000103741

Ph: 0404 879 863

PLASTERING

PHIL BOURKE PLASTERING

Over 36 yrs exp

Gyprock, Renovations

Small Jobs, Free Quotes

Reliable Service

0418 452 474

Licence No 2107c

PLUMBING

UMINA BEACH PLUMBING

All aspects of Plumbing, Drainage & Gasfitting

Domestic & Maintenance Works

Hot Water Installation & Repairs

4344 3611

0412 132 729

Lic no 25650C

REMOVALS

KEVIN'S REMOVALS & DELIVERIES

Deliveries & Removals, Local Sydney, Newcastle & Country.

Single items or a house full.

Competitive rates.

02 4342 1479

0411 049 559

IT'S A NO BRAINER!

An advertisement from this size in 20,000 newspapers from only \$25 + GST per week

Call now before the price goes up

Ph: 4325 7369

HAIRDRESSER

Sammybaillie homestudio

Specialising in Balayage and Hair Extensions

Balayage starting from \$150*

find us on instagram

sammybaillie1301@hotmail.com

*terms and conditions apply

PLASTERING

PHIL BOURKE PLASTERING

Over 36 yrs exp

Gyprock, Renovations

Small Jobs, Free Quotes

Reliable Service

0418 452 474

Licence No 2107c

PLUMBING

UMINA BEACH PLUMBING

All aspects of Plumbing, Drainage & Gasfitting

Domestic & Maintenance Works

Hot Water Installation & Repairs

4344 3611

0412 132 729

Lic no 25650C

REMOVALS

KEVIN'S REMOVALS & DELIVERIES

Deliveries & Removals, Local Sydney, Newcastle & Country.

Single items or a house full.

Competitive rates.

02 4342 1479

0411 049 559

IT'S A NO BRAINER!

An advertisement from this size in 20,000 newspapers from only \$25 + GST per week

Call now before the price goes up

Ph: 4325 7369

HAIRDRESSER

Sammybaillie homestudio

Specialising in Balayage and Hair Extensions

Balayage starting from \$150*

find us on instagram

sammybaillie1301@hotmail.com

*terms and conditions apply

LOCKSMITH

Matt Bell's Locksmith Service

All lock repairs

Lock installations

24 hour lockout service

Pensioner discount

ML 000103741

Ph: 0404 879 863

PLASTERING

PHIL BOURKE PLASTERING

Over 36 yrs exp

Gyprock, Renovations

Small Jobs, Free Quotes

Reliable Service

0418 452 474

Licence No 2107c

PLUMBING

UMINA BEACH PLUMBING

All aspects of Plumbing, Drainage & Gasfitting

Domestic & Maintenance Works

Hot Water Installation & Repairs

4344 3611

0412 132 729

Lic no 25650C

REMOVALS

KEVIN'S REMOVALS & DELIVERIES

Deliveries & Removals, Local Sydney, Newcastle & Country.

Single items or a house full.

Competitive rates.

02 4342 1479

0411 049 559

IT'S A NO BRAINER!

An advertisement from this size in 20,000 newspapers from only \$25 + GST per week

Call now before the price goes up

Ph: 4325 7369

ASBESTOS REMOVAL

Asbestos Removal

Fully licensed and insured asbestos removals from houses, garages, sheds, bathrooms etc.

Ph: Tom 0422 653 794

or 4393 9890

Safe Work NSW Lic. AD212564

BRICK LAYING

Brick Laying & Concreting

All Aspects of both Trades

40 yrs Exp

Phone Greg

0456 895 943

Lic 124312c

COUNSELLING

ACT NOW COUNSELLING

SOLVE A PROBLEM. FEEL GOOD ABOUT YOURSELF AND YOUR LIFE.

Qualified, registered, private counsellor

By phone, online video, or in-person

Reasonable prices

HUGH WORRALL - MOB 0402 529 474

act.now.counselling@gmail.com

www.actnowcounselling.blogspot.com

(ACA REGISTRATION #10757)

HANDYMAN

OLD MAN EMU HANDYMAN SERVICES

Covering all your internal and external handyman jobs

FREE QUOTES

Pensioner discount

Call David: 0413 396 167

PEST CONTROL

ACCESS PEST CONTROL

ALL PESTS, ALL AREAS, TERMITE SPECIALISTS (PENSIONER DISCOUNTS)

LIC# 5092837

PH # 02 8605 6637

WILL BEAT ANY COMPETITORS QUOTE

TILING

Homes2NV

Tiling Wall & Floor Property Maintenance

0439 589 426

homes2nv@gmail.com

NorthConnex

T 1800 997 057 (free call)
E enquiries@northconnex.com.auPO Box 343 Pennant Hills NSW 1715
northconnex.com.au

NorthConnex Construction Update – July 2020

Final work and commissioning activities are underway on the \$3 billion NorthConnex project. The twin nine kilometre tunnels will be the missing link between the M1 Pacific Motorway at Wahroonga and the Hills M2 Motorway at West Pennant Hills. When open, it will be the deepest road tunnel in Australia, removing up to 5,000 trucks from Pennant Hills Road daily.

The tunnel will feature a series of contemporary internal lighting features to keep drivers engaged and focused as they travel through the tunnel.

Current work to complete the project includes finalising landscaping, fencing and minor repairs across all locations. Commissioning activities continue to take place along the alignment. Activity to vacate temporary construction areas is underway at Eastbourne Avenue, Wahroonga, and along the M1 Pacific Motorway, while work at the tunnel support facilities at Wilson Road, Pennant Hills and Trelawney Street, Thornleigh is nearing an end.

Visit livetraffic.com.au for the latest traffic information.

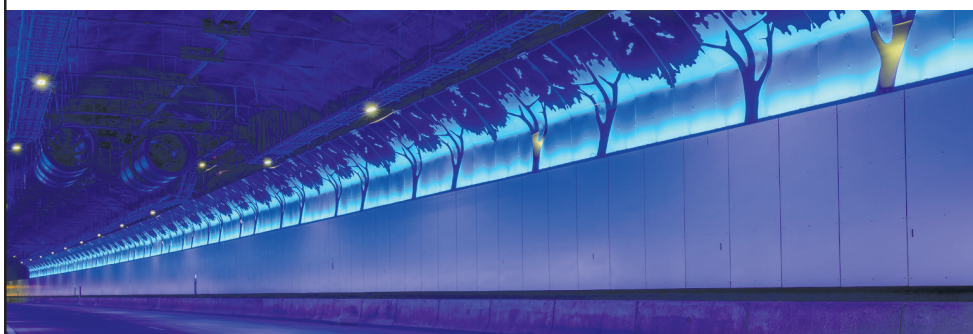
Air quality reporting

The NorthConnex tunnel ventilation system is designed to meet stringent air quality criteria. Baseline ambient air quality monitoring has been recorded outside the tunnel since late 2018. This monitoring will continue for at least two years after NorthConnex opens to traffic.

When NorthConnex opens, there will be 24 hour air quality monitoring inside the tunnel and from ventilation outlets.

Real time hourly results of air quality monitoring and relevant meteorological data is available at www.northconnex.com.au/environment-and-approvals/air-quality. A hardcopy report is available on request.

TIS
TRANSLATING
AND
INTERPRETING
SERVICE
131 450
www.tisnational.gov.au



Public transport capacity limits eased

Trains and buses can now accommodate more people with changes from July 1 on capacity limits on the NSW public transport network.

Parliamentary Secretary for Central Coast Mr Adam

Crouch said the changes were consistent with advice from NSW Health.

"The NSW Government's Covid-safe Transport Plan allows trains to carry 68 people per carriage and buses will be able to carry 23 people, more than double the previous capacity limits,"

Mr Crouch said.

"I urge everyone to continue social distancing rules and the best way to do this is by only standing or sitting on a green dot."

Mr Crouch said the NSW Government had implemented a number of changes to help people return to work and study in a COVID-safe way.

"Marshalling officers have been deployed to manage crowded commuter hubs, provide extra guidance to people and limit numbers on platforms if required," he said.

"Since March more than 700 additional cleaners have also been employed across NSW to undertake more regular cleaning on the public transport network.

"It's really important that people stay home and get tested if sick and cough or sneeze into their elbow, particularly when nearby others."

SOURCE:
Media release, 1 Jul 2020
Adam Crouch, Parliamentary Secretary Central Coast

PUBLIC NOTICE

Aboriginal Cultural Heritage Assessment - Invitation to Register Interest - HN87A

On behalf of Pacific Link Housing Limited, a tier 1 Registered Not for Profit Community Housing Provider, Heritage Now is seeking expressions of interest from Aboriginal people who hold cultural knowledge relevant to the relevant Woy Woy region. The Project Area is located 2 kilometres southwest of Woy Woy in the Central Coast Local Government Area and is within the Darkinjung Local Aboriginal Land Council boundaries.

The purpose of the consultation is to assist the proponent in the preparation of an Aboriginal Cultural Heritage Assessment.

In accordance with the Aboriginal Cultural Heritage Consultation Requirements 2010 please send your registration to:

Crystal Phillips

PO Box 114

Belmont NSW 2280

hello@heritagenow.com.au

0425 250 310

The due date for responses is 27 July 2020

Further information will be provided on registration



RUN IT 'TIL YOU SELL IT

TWO ELECTRIC HOT

water systems

50 Litres,

EXT. TABLE

900x900 + chairs,

ROUND OAK TABLE

1200mm + chairs,

MULTIPLE COFFEE

TABLES

variety of finishes.

Located San Remo,

Bob - Ph: 4399 2757

TOP QUALITY

RECLINER CHAIR

fully powered, with

timber armrests

\$860, Ph: 4342 1896

2010 COLORADO

4x4, auto diesel, 130ltr

fuel tank, many extras,

ready for travel, only

130,000 kms, some

camping gear \$19,500

Ph: 0466 848 189

CARAVAN

- WINDSOR

WINDCHEATER

poptop 16.5ft, new

seals, rollout awning,

tyres and rims, fridge,

gas oven and stove,

single beds. includes:

electric brakes, privacy

screen, cover, tv, all

cookware, crockery

and cutlery etc.

\$13,000 ono

Ph: 4341 6172

SNOWBOARD

sim's enduro, with

binders and padded

bag, good condition.

Bateau bay \$300 ONO

Ph: 0409 395 434

DINING TABLE

timber base, glass top,

6 black vinyl chairs, all

in good condition, \$600

Ph: 4351 0867

COROMAL CARAVAN

poptop, single beds,

annex, microwave,

TV, generator, solar

panels, gas stove,

elec fridge, unmarked

interior, pressure

meter, \$7,500

Ph: 4393 5825

2002 CANNONDALE

ECLIPSE PRODIGY

BICYCLE

hardly used, good

condition, \$500.00

Ph: 0419 797 177

MINI COOPER S

CHILLI R56

white, Long rego.

As new, Manual 2 door,

4 cylinders, turbo

Leather seats.

\$8,500, Helen

Ph: 0414 44 5971



RUN ABOUT

12ft boat, has 25HP,

mercury engine, \$4,500

ono. Ph: 4377 1196

PIANO COTTAGE

BEALE

polished mahogany,

beautiful sound. one

family owned, moving

downsize, buyers

removal, \$2399 ONO.

Ph: 0408 176 429

BATEAU BAY ITEMS

FOR SALE,

For Nissan Patrol

GU Models, Rear

Storage Boxes,

Roof Console, Fuel

Chip, Warne Winch

Magnum 8K, Tools,

Tool Boxes, Metal

Bench, Pine Cabinet,

Overalls, 3 Man tent,

Sleeping bags, Hose

Link Garden Hose,

Computer Cables,

3 Cordless Phones,

New 240 v Speakers,

Electrical Switches,

10Amp Cable and

Reels, LG TV Stands,

New Carpet Cleaner,

x2 sets golf clubs,

Call Ray

Ph: 0408422762

MOORING 2 POSTER

VGC, Blackwall channel,

off private jetty at end of

McMasters Rd, \$3000

ONO Ph: 0412 099 936

STUDENT OFFICE

ROLLTOP DESK,

antique style, excellent

condition, first to see will

buy, \$30-0

Ph: 0458 004 339

MINIATURE TRAIN

RAILS

suit boat ramp, nine

lengths from 3.1 to

3.85 metres, some with

joiners, \$200 for the lot

Ph: 0499 887 580

FOR SALE

fishing gear, boating

gear, some trailer parts,

all in good condition, too

much to itemise.

Ph: 0409 963 584

Run it 'til you sell it*

*To run in all three papers and on line for a maximum of 3 months if not sold before

Client Name: _____

Phone: _____

Email: _____

20 words \$44 ☐

Photo \$11

yes ☐

no ☐

Extra words at \$2.20 per word

Card: _____

Expiry: _____

Office use only:

Commence with edition: _____

End with (if not sold) edition: _____

Reference Number _____

Renewing: _____

yes ☐

no ☐

If yes, new ending edition if not sold _____

Fill in, cut out and send in to Central Coast Newspapers PO Box 1056 Gosford NSW 2250

History

Real estate interest led to local development

Karen Askew, relates the story of Charles Staples – a councillor, businessman and road maker – and the namesake of one of our most popular lookouts.

Charles Staples was a Woy Woy businessman working primarily in real estate who moved here about 1914.

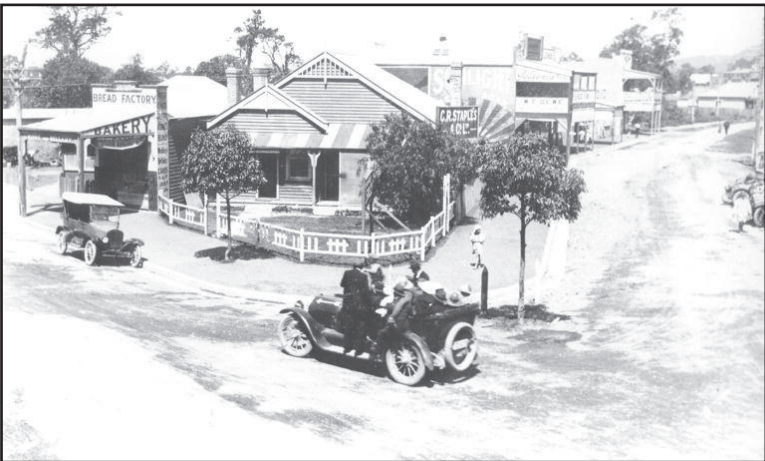
His real estate business was on the corner of Blackwall Rd and Railway St, Woy Woy.

He and his wife, Florence, were civic-minded and involved in many community projects.

Granted a district auctioneer's licence in March 1915, he lived in Blackwall Rd, Woy Woy, in a house facing the waterfront and began selling subdivided lots immediately.

He became the secretary of a local progress association concerned with the installation of a tramway from Woy Woy station to Ocean Beach, Umina.

With the advent of the First World War, it was decided that perhaps a



road for vehicular traffic should go in first and to shelve the tramway idea.

By June of 1915, Staples was petitioning the Council to sell some of its reserves to fund Ocean Beach Rd.

One has to remember that Gosford and the Brisbane Water district began as a series of waterside townships, which were very reliant on boats for travelling to neighbouring settlements and travel to Sydney and beyond.

With the advent of motorised

vehicles, there was added pressure to develop link roads from Sydney to Newcastle and for roads to swing by Gosford and other towns on the way.

Letters to the editor in the local paper suggest that Staples was bashing his head against the old guard, who saw him as a blow-in and they did not want to open new pathways to new tourist sites that would deflect from their own tourist investments.

The construction of Ocean Beach Rd commenced after several years of Staples nagging and toughing it out with the old guard, arguing that their objections to the proposed new road were putting obstacles up before the local residents and not the tourists and it was for local traffic only as there was at this time no other road into the Peninsula.

With the popular support of the local residents, Staples was elected to the Erina Council.

Many of the roads to the Central Coast we take for granted and use today did not exist until the 1920s.

As the roads system developed to

what we have today, the dependence on water travel declined.

Staples was involved with the committee to establish a war memorial by the waterfront, the creation of Ocean Beach Rd and in one audacious act, Charles and two others were in the first car to bush-bash a track from Kariong to Woy Woy.

This track became the present day Woy Woy Rd.

Charles Staples' business interests as a real estate agent directly linked him to an interest in road development.

In 1923 Staples was President of the Erina Shire Council and oversaw the construction of many local roads.

"The Devil's Elbow" on Bulls Hill is one of a number of hairpin bends in the district that are the legacy of Charles Staples, other notorious bends included Ward's Hill Killcare, and on the road to Patonga.

In the early 1930s Staples was also responsible for the planning and building of Brisbane Water Dr.

There was a time when you did not have to come from a medical or a legal background to become the district coroner.

Just having a reputation as being an upstanding community-minded person would suffice for the position.

In 1933 Charles Staples became the third District Coroner.

His first case was a multiple murder-suicide at Ourimbah. This became known as the "Ourimbah Tragedy" which became a matter for national headlines but was not reported at all in the local newspapers.

Not all the cases Staples dealt with were as dramatic as the

Ourimbah Tragedy.

He had involvement in many coronial inquiries about vehicle-related deaths, be they pedestrians, passengers or drivers.

Many of these deaths were on the very roads he had marked out the decade before.

Staples observed that by 1937 vehicles had become faster and faster by the year and that the grade of the hills and the number of curves and corners had remained the same, leading to the increase of fatalities on the Central Coast roads.

He was a strong advocate for warning signage and speed limits and driving to the conditions.

The Central Coast was the first to install yellow diamond shaped warning signs suggesting a safe speed to take the next corner. These signs are country wide now.

He also noted that the Central Coast was about equal distance from both Sydney and Newcastle and was in what he called the "sleep zone" with many drivers dying asleep at the wheel.

He dealt with 10 road fatalities in his first year.

This observation of his became the basis for the nationwide two-hour driver revival campaign that we still see today.

Charles Jeffress Staples died in 1973 aged 88.

The only landmark celebrating the name of this remarkable man is the lookout on the Woy Woy Rd.

He and his whole family are buried at Point Clare Cemetery.

SOURCE
Email, 9 Jun 2020
Karen Askew, Point Clare

WE TAKE THE HASSLE OUT OF OWNING A POOL OR SPA

Crystal Clear POOL SHOP

ONLY POOL SHOP ON THE PENINSULA

FOR THE BEST ALL ROUND POOL AND SPA SERVICING

11 Mutu Street, Woy Woy - crystalclearpoolshop.com.au - PH: 43 422 422

FORT DENISON

Times are in local standard time (UTC +10:00) or daylight savings time (UTC +11:00) when in effect.

TIDE CHART

LAT 33° 51' S - LONG 151° 14' E - TIME ZONE - 1000

Times and Heights(m) of high and low waters

13

MON

0130 1.39
0808 0.60
1436 1.39
2035 0.80

14

TUE

0229 1.32
0855 0.61
1530 1.44
2147 0.78

15

WED

0333 1.27
0944 0.62
1622 1.51
2254 0.72

16

THU

0437 1.25
1031 0.62
1710 1.58
2351 0.63

17

FRI

0533 1.26
1117 0.60
1755 1.67

18

SAT

0039 0.55
0624 1.28
1201 0.58
1838 1.75

19

SUN

0122 0.46
0711 1.31
1245 0.54
1921 1.84

20

MON

0204 0.38
0756 1.35
1330 0.51
2004 1.90

21

TUE

0245 0.32
0841 1.38
1415 0.48
2048 1.95

22

WED

0329 0.27
0927 1.41
1503 0.46
2133 1.96

23

THU

0414 0.26
1015 1.43
1553 0.46
2220 1.93

24

FRI

0459 0.26
1105 1.46
1646 0.48
2308 1.85

25

SAT

0545 0.29
1157 1.48
1744 0.52

26


SUN

0000 1.74
0634 0.34
1251 1.51
1845 0.56

APPROX. TIME LAG AFTER FORT DENISON

Etahlong 40 min, Rip Bridge 2hrs
Wisemans Ferry 2 hrs 30 min,
Koolewong 2 hrs 10 min

In view of the variations caused by local conditions and meteorological effects, these times are approximate and must be considered as a guide only. They are not to be relied on for critical depth calculations for safe navigation. Actual times of High and Low Water may occur before or after the times indicated





CASUAL MEETING ROOM HIRE RIGHT HERE ON THE COAST.

Nexus Business Hub in Wyong leads the Central Coast in modern, stylish meeting spaces for your business appointments. Our rooms come fully equipped with state-of-the-art video conferencing, incredibly fast internet and access to all the facilities on site, including our concierge service.

Choose from several different sized rooms including our large boardroom and with all connections tested before your start time; it's as simple as plug and play.

To make a booking visit nexushub.com.au

- > Casual drop in
- > Plug 'n' play
- > Tech Support
- > Modern Space
- > Large Boardroom
- > On-site parking

20% OFF
YOUR FIRST VISIT

Two bowlers could be in both pairs and singles finals

Two members of the Umina Beach Men's Bowling Club could play in both the club's major pairs and its major singles championships.

Paul Trigg and Shane Waddell have already won their way through to the major pairs finals.

And Shane has already won his way through to the major singles quarter finals.

Paul and Shane defeated Lee Cribbs and Glen Simington in their

major pairs semi-final.

Jazza Bates and Rob Andersen will play against Paul Trigg and Shane Waddell in the major pairs final.

In the major singles, Tony Potter defeated Gary Yates on July 4 to go through to the quarter finals.

Shane Waddell won his place in the quarter final after Sid Stokie forfeited to him with an injured foot.

Social media, 4 Jul 2020
Peter Springett, Umina Beach Men's Bowling Club

Netball association seeks vice-president

Woy Woy Peninsula Netball Association is seeking expressions of interest in the position of vice-president with the association.

The vice-president assists the president and is asked to preside at meetings in the absence of the president which could include meetings with Netball NSW, local

politicians, Central Coast Sports Council or Central Coast Heart.

Association president Ms Lisa Coakley said: "Experience in netball at grassroots and State level would be great but not necessary.

"If you also have an understanding of building codes and regulations this would be

advantageous as we begin the planning process for the new clubhouse soon.

Ms Coakley said the position would suit a person who loved to be hands on and would like to make a difference for a small community based sporting.

Website, 7 Jul 2020
Lisa Coakley, WWPNA

Singles and pairs played at Ettalong

Ettalong Eagles Bowling Club will recommence major singles competition on Sunday, July 19, with completion of round two matches.

Further rounds will continue on

Saturday and Sunday, July 25 and 26, with double header games to complete the competition.

Losers from previous rounds will be required to mark.

A play or forfeit rule will apply. The club's major pairs competition will start on Sunday,

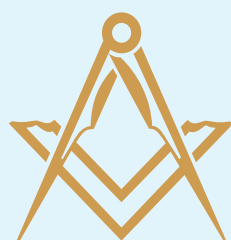
August 2, with further rounds on August 15, 16 and 30.

Zone singles will be played to completion on August 8 and 9.

Zone pairs will be play on August 22, 23 and 29.

Social media, 3 Jul 2020
Ettalong Eagles Bowling Club

INTEGRITY • LOYALTY • RESPECT



FREEMASONS
NSW & ACT

Freemasonry is a worldwide fraternal organisation that promotes moral and personal development amongst its members.

Its core values include always acting with honesty and integrity, appreciating and caring for others and assisting those in need.

Freemasonry puts its principles into practice through extensive charitable activities, working closely with our local communities to identify and assist both individuals and the wider community.

In a world too often divided by difference, conflict and alienation, Freemasonry strives to unite men of ALL origins, religions and backgrounds.

The Central Coast is home to a number of lodges meeting at the Gosford or Wyong Masonic Centres on various days and at various times, if you are interested in joining or would like to know more, contact us.



0481 765 337



geoff.bown@hotmail.com



COASTAL DIARY

MONDAY, JUL 13

David Mehan MP: Mobile office,
North Entrance Car Park
11am – 1pm
4334 1012

TUESDAY, JUL 14

David Mehan MP: Mobile office, Killarney Vale Coles
11am – 1pm
4334 1012

WEDNESDAY, JUL 15

David Mehan MP: Mobile office, 23 Tonkiss St, Tuggerah
11am – 1pm

4334 1012

THURSDAY, JUL 16

David Mehan MP: Mobile office, Niagara Park Stadium,
11am – 1pm
4334 1012

SUNDAY, JUL 19

Umina Beach Markets,
Umina Sydney Ave,
9am – 2pm

FRIDAY, JUL 24

Central Coast Mariners V Newcastle Jets,
Central Coast Stadium,
Ticketed, 7:30pm

SATURDAY, JUL 25

Swift Parrot Talk and Walk - conserving the critically endangered Swift Parrot, Community Hall, Bateau Bay,
Bookings essential,
10am - 12pm

The Makers Studio: 'Make Your Mark' Exhibition,
30/07 - 02/08

MONDAY, JUL 27

Central Coast Mariners V Western Sydney Wanderers,
Central Coast Stadium,
Ticketed, 7:30pm

SATURDAY, AUG 8

Plant a Nectar Food Forest - save the swift parrots, EDSACC, Bateau Bay,
9am - 12pm

Million Star Sleepout:
#Rough4anight - fundraiser for the homeless, register online

Drawing Workshop - Spicks & Specks,
The Design Gallery Terrigal,
Ticketed, 8/08 or 9/08,
10:30am - 3pm

SUNDAY, AUG 16

Kidman Centre Fundraiser: Jazz, Blues and Soul,

Galleria Ettalong Beach,
11am – 3pm

WEDNESDAY, SEP 16

47th Wyong District Garden Competition,
Closing date for entries is 25/08, presentation day on the 16/09

FRIDAY, SEP 18

CEN Land for Wildlife Biennial Forum,
Aanuka Beach Resort,
Ticketed

SATURDAY, SEP 19

Collagraph with Viscosity
Colour printing,
The Makers Studio,
19-20/09, Ticketed

WEDNESDAY, OCT 14

Central Coast Primary Care: Annual Mental Health Art Works Exhibition,
Gosford Regional Gallery,
Exhibition on from 14 - 20th Oct, entries close 30th Aug

SUNDAY, DEC 6

The Christmas Fair 2020,
Mount Penang Gardens
Kariang, 9am - 2pm

Basic entries in the Coastal Diary are **FREE**. Send information to coastaldiary@centralcoastnews.net
ENHANCED entries using bold typeface with an address, phone number and a live link are available for a small fee.
Photographs can also be added for a small fee. All display advertisers are entitled to a free enhanced entry.



OAK TREE
RETIREMENT VILLAGES



BRAND NEW DISPLAY VILLA

Now Open at OAK TREE KANWAL

Open Monday to Friday 10am – 2pm by appointment

- Maintain your **independence**
- **Well-designed homes** with private yards
- **Stylish and modern** interiors
- **Full brick** construction
- **Landscaped** gardens
- **Affordable** service fee
- **Solar panels with battery storage** on every home with full benefits to residents
- **Registered Retirement Village** and compliant with legislation requirements
- **Swimming pool** and **Bowling green**
- **Recreation centre** with gym equipment

85 Wahroonga Road, Kanwal

Call 1300 367 155

oaktreegroup.com.au