

Umina to expand says Chamber

Umina Beach CBD commercial zone is likely to be expanded in the soon to be released Draft City Wide LEP by Gosford Council, according to Peninsula Chamber of Commerce.

"It is our understanding that the Draft City Wide Local Environmental Plan due to be released for public comment in the middle of this year will have some good implications for the Umina Beach town centre," Chamber president Mr Matthew Wales said.

"Following the adoption of the Peninsula Urban Directions Strategy by Gosford City Council in 2007, many of the recommendations are likely to be incorporated into the new City Wide LEP.

"In particular, the Chamber expects to see the expansion of the commercial/retail zone from the northern side of the West St shops through to Wellington Ave.

"This would extend from Ocean Beach Rd through to Trafalgar Ave.

"We see this as being vitally important for the future growth of the Umina Beach town centre so

as to ensure that the opportunity exists for additional high quality commercial and retail floor to be added.

"In recent years there has been added pressure for good quality retail floor space to augment the existing retail centre.

"Much of the existing floor space is aging and with renewed interest from major retailers in Umina Beach, expanding the options is very important.

"With an ever-improving demographic and more spendable income, we see Umina Beach CBD increasingly becoming a much more vibrant retail centre with obvious demands for quality floor space and more accessible parking."

"The Chamber of Commerce has been lobbying council for many years to improve parking and access to the shopping centre and we are pleased that our concerns are being addressed in both recent engineering works and future planning controls," Mr Wales said.

Press release, 23 Mar 2008
Matthew Wales,

Peninsula Chamber of Commerce



Mayor Cr Jim Macfadyen officially opens the Spike Milligan Bridge with Spike's brother Desmond Milligan, and (insert) the memorial plaque dedicated to Spike Milligan on the Northern side of the bridge.

Mitre 10 to close

Mitre 10 at Umina Beach is expected to vacate its site in two weeks, according to Mitre 10's public relations company Haystac PR.

Haystac Mitre 10 account manager Ms Anna Riordan said it was her understanding that the Umina Beach Mitre 10 "had been sold" and would be vacating the site in "approximately one month's time".

Ms Riordan stated that she had spoken with the owner who mentioned that he could not comment on the current status of the business at the moment.

She did not confirm that the site would be re developed by Woolworths

Lyle Stone, 26 Mar 2008
Interviewee: Anna Riordan,
Haystac PR

Gosford Council has awarded the lease for Ettalong Beach Village to a new operator.

Australian Tourist Park Management has been awarded the tender for the Ettalong Beach Village.

Annual rent of the site will cost \$225,000, with the lease commencing on July 1 or sooner.

Gosford Council had previously

invited Australian Tourist Park Management and the current leasee, Oakhut, to tender for the site.

Oakhut currently lease the site from council for use as a "Caravan Park and Camping Ground", and have done so for the past 17 years.

Australian Tourist Park Management has been offered a

lease period of seven years, with two option periods of seven years each.

Council stated that Australian Tourist Park Management ranked highly against all the stated criteria and appeared "to possess the necessary resources, skills and experience to effectively operate the Ettalong Beach Village".

Council agenda COR.21, 25 Mar 2008

Ettalong Beach Village to change hands

THIS ISSUE contains 57 articles. Read more at www.PeninsulaNews.asn.au

OCEAN BEACH RD
PHYSIOTHERAPY,
SPORTS INJURIES, SPINAL & REHABILITATION CENTRE

- Back, Neck & Knee Pain • Sports & Work Injuries • Joint & Muscle Pain •
- Exercise Programs • Wheelchair Access • Personalised Pilates • Rehabilitation •
- Massage • Home Visits • Weight Loss • Veterans Affairs • On-site Parking •

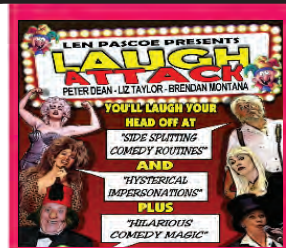
ALISTAIR CHOIE B.App.Sc. (Phy) MAPA - **STEVE ROW** B.App.Sc. (Phy) MAPA

433 Ocean Beach Rd, Umina 4342 0999 - 0417 231 066

BEFORE & AFTER HOURS AND WEEKEND APPOINTMENTS AVAILABLE



25th April
Laugh Attack
Tickets \$15



THURSDAYS
Great steak night
from 5 pm

New Lucky Member
Draw 7.30pm

Cabaret Shows

April 12
Graham Wright

April 26
Annie Francis



Gala Day

April 3
Margaret Flanagan

April 17
Toni Stevens

Dunban Road, Woy Woy Phone 4341 1866 - Conditions of entry and dress rules apply - COURTESY BUS Thursday to Sunday from 5.15pm

Plan for Patonga

Gosford Council has resolved to support the preparation of a plan of management for all crown land in Patonga.

The Department of Lands approached council in December, with a request that the Caravan and Camping Area Draft Plan of Management be incorporated into a plan of management for the whole of Patonga.

To ensure a "cohesive approach to management and maintenance of all crown land" within Patonga, the Department of Lands has proposed to engage consultants to prepare the plan.

A report will come to the council in the future requesting that the draft Patonga plan of management be placed on public exhibition.

**Council agenda SF.2, 26 Feb 2008
Kate Carragher, Gosford Council**

Less than half monthly rain

The Peninsula has recorded less than half the average monthly rainfall for March.

Figures recorded by Mr Jim Morrison of Hillview St showed a

total of only 57.5mm for the month, as at last Friday.

The average monthly rainfall for March is 130.3mm.

**Spreadsheet, 28 Mar 2008
Jim Morrison, Woy Woy**

Activities for seniors week

Gosford Council has planned a range of activities for the Peninsula to help celebrate the 50th Anniversary of Seniors Week, April 6 to 13.

The Peninsula Leisure Centre will be holding a gentle exercise aerobics class aimed to improve strength, stamina, flexibility and balance on Monday, April 7.

The class is free to all seniors and begins at 8.30am.

Seniors will be given the opportunity to learn to surf at Umina Beach from April 7 to 12.

The Peninsula Leisure Centre has organised a free surf school for seniors starting at 2pm to 3.30pm on April 7 to 11 and 8.30am to 10am on April 12.

For further information and bookings please contact 4325 8123.

Ettalong Senior Citizens Centre offers Peninsula seniors a range of activities every week including yoga, dance lessons, computer classes, card and board games and craft lessons.

The Ettalong Senior Citizens Centre is located on the Cnr Broken Bay Rd and Karingi St, Ettalong.

For more information please contact the centre on 4341 3222.

Ettalong Senior Citizens Centre will be hosting a tea dance on Tuesday, April 8, with a swing band for all to dance and listen to.

The dance begins at 1pm to 4pm and costs \$6, including afternoon tea, entertainment and dance class.

Participants are encouraged to dress up in roaring 1920s, ballroom, rock 'n' roll or disco costume, with prizes going to the best dressed.

For more information and

bookings, contact 4341 3222.

Meals on Wheels, Woy Woy, will be holding a St John resuscitation course on Wednesday, April 9.

The course is only \$10 for seniors (usual cost \$60).

The morning course starts at 9am to 1pm and the afternoon class from 1.30pm to 4pm.

For further information and bookings, contact 4324 6047.

The Peninsula Leisure Centre is holding a boxing fitness class for seniors at no charge.

The class begins at 11.30am on Thursday, April 10.

For information and bookings, contact 4325 8123.

Arthritis Group will be holding an inspection and demonstration of the hydrotherapy pool at Woy Woy Hospital on Friday, April 11, Woy Woy.

The demonstration is free and starts at 10.30am to 11.30am.

Ettalong Senior Citizens Centre will be hosting a line dancing class on April 11, starting at 9am.

The cost of the day is \$5 and participants are asked to wear white shirts and bring along a plate to share for morning tea.

For further information and bookings, contact 4341 3222.

Member for Gosford Ms Marie Andrews will be hosting the 13th Annual Senior's Week Concert at Ettalong Beach War Memorial Club on Friday, April 11.

The morning concert begins at 10am and the afternoon session at 1pm.

Entry into the concert is a gold coin donation.

Seniors will have the opportunity to cruise around on Brisbane Water for only \$5 per person on Friday, April 18.

The Lady Kendall II departs Gosford Waterfront at 10.15am and Woy Woy at 10.35am.

Limited tickets are available from Gosford, Terrigal and Ettalong Senior Citizen Centres.

Umina Library will be holding a special grandparents story time and morning tea on April 8 and 10, from 10.30am.

A coastal walk from Maitland Bay to Putty Beach will be held from 9am on April 6 and 10.30am on April 7.

The cost is \$7 for non-seniors and \$5 for seniors.

For more information and bookings, contact 4320 4205 by Friday noon prior to walk.

A 4WD tag-a-long tour has been organised through Brisbane Water National Park on Sunday, April 6.

The eight-hour tour begins at 9am and costs \$10 per person.

For more information and bookings please contact 4320 4205 by Friday noon prior.

**Booklet, 28 March 2008
Rhonda Gibson, Gosford Council**

Peninsula News

Community Access

Peninsula News is owned by Peninsula Community Access Newspaper Inc., an incorporated, non-profit association. Its aims include providing a viable, non-partisan news medium and forum exclusively for the Peninsula and developing a sense of community on the Peninsula.

Association President and Editor: Mark Snell

Commercial operator: Cec Bucello for Ducks Crossing Publications

Journalists: Lyle Stone, Clare Graham

Graphic design: Justin Stanley

Contributors: Stuart Bauman

Declaration of interests

Honorary editor: Mark Snell

Owner and managing director, Open Windows Consulting Pty Ltd

Convenor, Burrawang Bushland Reserve Committee

President, Australian Conservation Foundation Central Coast branch

Chairman, Equilibrium Community Ecology Inc

President, Central Coast Bush Dance & Music Association

Vice-president, Brisbane Water Secondary College Umina Campus P&C

Next Edition: Peninsula News 188

Deadline: April 9

Publication date: April 14

Contributions

Letters to the editor and other contributions are welcomed and should be addressed to: Peninsula News PO Box 532, Woy Woy 2256. Contributions should be in Word format sent via email to: mail@peninsulanews.asn.au, on disks or by handwritten letter if these facilities are not available to you. Contributions must include the date, your name, address and phone numbers. Name and Suburb will be published. Anonymous contributions will not be included. Submissions may be published in edited form. All accepted contributions also appear on our website.

CONTACT US AT:



Office: 2a Kateena Ave Tascott

Phone: 4325 7369 **Fax:** 4325 7362

Mail: PO Box 532, Woy Woy 2256

E-mail: mail@peninsulanews.asn.au

Website: www.duckscrossing.org

Website: www.peninsulanews.asn.au

Legal responsibility for editing, printing and publishing in Peninsula News is taken by Mark Snell of Woy Woy, for Peninsula Community Access Newspaper Inc.

Ducks Crossing Publications is the commercial operator of Peninsula News

Ducks Crossing Publications also publishes

• **Coast Bowls News** - www.cocdba.org.au - email: bowlsnews@duckscrossing.org

• **Trad&Now** - www.tradandnow.com - email: info@tradandnow.com

Printed by MPD, Maddox St, Alexandria

Resuscitation information

A Resuscitation Information Session will be held at the Beachside Family Centre, Umina Public School, on Monday, April 7.

Trainers from Umina Surf Club will be running the session.

"Topics covered will be primary assessment, recent resuscitation changes and practical skill using manikins," centre facilitator Ms

Debbie Notara said.

"This is information every parent of young children should know."

The information session is free and will run from 9.30am to 11.30am.

For more information or to book a place at the session, telephone 4343 1929.

**Press release, 12 Mar 2008
Debbie Notara,
Beachside Family Centre**

Emergency Numbers

Police, Fire, Ambulance	000
Gosford Hospital	4320 2111
Woy Woy Hospital	4344 8444
Police Assistance Line	131 444
Woy Woy Police Station	4379 7399
Crime Stoppers	1800 333 000
RFS Fire Control Centre	4340 2911
SES	132 500
Gosford City Council	4325 8222
City Rail	131 500
Energy Australia	13 13 88
Poisons Information	131 126
Lifeline	13 11 14

Subscribe!

and enjoy the convenience of having **Peninsula News** mailed to your home

YES ! Please send:

- 12 fortnightly issues for \$20
- OR**
- 26 fortnightly issues for \$40

A subscription to Peninsula News now entitles subscribers to membership of Peninsula Community Access Newspaper Inc., an incorporated, not for profit, association. Please tick if you would like to accept membership

OR

- Please find enclosed \$5 for membership to the Peninsula Community Access Newspaper Inc

Name _____

Address _____

Please send a cheque, money order or credit card details with your order to:

Ducks Crossing Publications
PO Box 532,
Woy Woy 2256

SOS asks Andrews to oppose sell-off

Save Our Suburbs Central Coast has asked Member for Gosford Ms Marie Andrews to drop her support for the NSW electricity sell off.

Umina resident and SOS Central Coast secretary Mr Bryan Ellis said that only public ownership would allow the substantial changes needed in the industry to reduce greenhouse gases to a sustainable level.

"The Woy Woy Peninsula and surrounds are vulnerable to the expected sea level rise and storm surges documented in many reports on climate change by local, state, federal governments and international organisations.

"Urgent action is required to leave a livable Peninsula to the coming generations," said Mr Ellis.

"Planning the way we live can have a significant impact on the planet," said

"Sadly, our own NSW government is still implementing a discredited the unsubstantiated urban planning ideology of high density, which actually reduces sustainability and increases the human impact of climate change on our planet and the Peninsula in particular.

"The proposed electricity sell

off further compounds the problem by undermining the federal labor Governments Garnaut process and the development of an emissions trading market.

"If the state government is serious about reducing this State's greenhouse gas emissions to a sustainable level, it has to accept that the electricity industry will need to undergo substantial change to manage consumer needs and increase the use of renewable energy.

"Only public ownership allows this to happen at a reasonable cost.

"Is the Member for Gosford a supporter of clean energy for our future or an advocate for disaster on the Peninsula?"

"Why does the member for Gosford still support privatisation of the electricity industry when the sale will not provide security of supply?"

"We call on Ms Andrews to drop her support for the electricity sell-off scheme and help the lemma Government work with the federal government to usher in a comprehensive carbon market."

**Press release, 26 Mar 2008
Bryan Ellis,
Save Our Suburbs Central Coast**



The site of the demolished toilets on the Ettalong Foreshore

Chamber welcomes toilet demolition

The Peninsula Chamber of Commerce Mainstreet co-ordinator Ms Debra Wales has welcomed the demolition of the old toilet block at the end of Picnic Parade, Ettalong Beach, after a "long battle" to have the Ettalong Beach Foreshore Masterplan adopted and implemented by Gosford Council.

"Finally after eight years of negotiations with the Council, we are ecstatic to see the demolition of the toilet block which will enable the third viewing platform to be constructed at the end of Picnic Parade," Ms Wales said.

"The removal of the toilets has now opened up the beautiful vistas over Brisbane Water as you look

down Picnic Parade.

"This was a key element in the Foreshore Masterplan aimed at restoring view lines and access to the Ettalong Beach waterfront.

"This work now sees all three viewing platform areas cleared for the ongoing construction of the timber and steel structures in the coming months.

"The Ettalong Beach business and local community should feel very pleased that the works have now commenced after such a long succession of meetings, plans and public submissions."

Ms Wales said that the upgrade of the foreshore originated from public meetings held in 1995 from which plans were subsequently included in the council's 1998 Financial Strategy for the Ettalong

Beach town centre.

"Part of the funding for the foreshore works has come from left over funds from the 1998 Financial Strategy which the Chamber lobbied to have allocated to the current works," Ms Wales said.

"An amount of \$270,000 has been allocated which, coupled with the \$300,000 contribution from the Ettalong Beach Club, will enable much of the first stage of the upgrade to be completed.

"Gosford Council has also applied for Regional Partnerships funding through the Federal Government in the hope of dollar-for-dollar matching funds."

**Press release, 23 Mar 2008
Debra Wales,
Peninsula Chamber of Commerce**

Wireless broadband for Patonga

Gosford Council officers have recommended that Telstra be allowed to upgrade their existing phone tower on Patonga Dr "to ensure a reliable 3G and Wireless Broadband service to the Patonga area".

An application for the upgrade was made to council on January 4.

The proposal involves the installation on the top of the existing EnergyAustralia pole of four new "omni" antennas.

The two existing omni antennas will be removed.

It would also include the installation at ground level of two new Telstra "Trashcan" enclosures to house electrical and telecommunication equipment associated with the new and existing facility. All existing microboxes on the pole will be removed.

All antennas and "Trashcan" enclosures will be painted green to match the pole and to blend with the surrounding vegetation.

Council agenda ENV.29, 1 Apr 2008

Celebrate Seniors Week on the Peninsula!



at the

MARIE ANDREWS MP 13th ANNUAL SENIORS WEEK CONCERTS

FRIDAY 11 APRIL 2008

10am Morning Concert or 1pm Afternoon Concert

Where: Ettalong Beach War Memorial Club
For: Peninsula Senior Citizens
Tickets: Available from Club from Monday 7th April, 2008
Cost: Gold coin donation with proceeds to Woy Woy Hospital Auxiliary

Peninsular Office Supplies



4342 2150 or email: info@penoff.biz

Shop 8, 327 West St. Umina opposite Berith St.

YES

We will match or beat any advertised price on ink and toner cartridges. New originals or compatibles. Bring in your old cartridges and put them in the Calidad re-use bin (not recycled). Ask us why



Member for Gosford Ms Marie Andrews, Elsie Solway and the NSW Premier Mr Morris Iemma

Among 90 nominated

Local resident Elsie Solway joined over 90 other women from around New South Wales who had been nominated for Woman of the Year at a function at Parliament House recently.

Member for Gosford Ms Marie Andrews nominated Elsie Solway of Umina Beach as the Electorate's Woman of the Year.

"For over 20 years, Elsie has dedicated much of her time to raising funds for the Woy Woy Community Aged Care," Ms Andrews said.

"This community-based facility provides a very comfortable accommodation for each of the 94 residents.

"As an active member of Woy Woy Community Aged Care Auxiliary, Elsie has held regular

garage sales and street stalls to raise funds."

For the past five years, Elsie has been the auxiliary's president and has managed to keep the group together at a time when volunteer numbers are dwindling.

Ms Andrews paid tribute to Elsie in a recent speech made in the NSW Parliament.

**Press release, 10 Mar 2008
Marie Andrews, Member for Gosford**

Medal presented to Woy Woy resident

Woy Woy resident Ms Bronwyn Scully was awarded the Australian Defence Medal at a special ceremony at Gosford RSL Club on Tuesday, March 25.

Ms Scully joined 17 other Robertson residents to receive the medal for their contribution to protecting the nation.

"The Australian Government has the highest regard for the outstanding contribution these Central Coast citizens have to Australia's proud military history," Member for Robertson Ms Belinda Neal said.

"The medals are a great tribute to the men and women of Robertson who gave so much to our country when they were in uniform.

"They are still contributing to the fabric of our society today.

"I congratulate them all."

Ms Scully joined the Australian Defence Force (ADF) in the 1970s "when women's involvement in

military life was a unique and pioneering career choice".

She joined the same unit, the Royal Australian Corps of Signals, as her father Mr Kenrick Scully.

Mr Scully was a journalist with the old Gosford Star newspaper and author of a book, "Every Man for Himself", about the evacuation of New Guinea in the face of Japanese invasion during World War Two.

"My time in the Corps gave me the work ethic that set me up for the rest of my life," Ms Scully said.

"This medal is a nice way for the nation to say thanks."

The Australian Defence Medal was first established in 2006 to recognise ADF regular and reserve personnel who have demonstrated their service to the nation by serving four years or their initial enlistment period since the end of World War II.

**Press release, 25 March 2008
Belinda Neal, Member for Robertson**

Land for affordable housing?

Gosford Council is considering using a block of land at 10 Macleay Ave, Woy Woy, for an affordable housing project.

Council officers have recommended that council support, in the principal, the use of the site for the project.

They have also recommended that further investigations be undertaken to determine how the Gosford Housing Trust can be involved in facilitating the use of the property for an affordable housing project to be carried out in partnership between council and a community housing provider.

Council said that, in line with the

goals of the Affordable Housing Strategy, a search of vacant council-owned land had been conducted to locate potential sites available for the project.

The search identified the land at 10 Macleay St, Woy Woy, as being the most suitable.

Council officers said it was envisaged that this pilot project could assist in facilitating future affordable housing projects involving both public and private owned lands.

They stated: "Its development by a community housing provider for a residential purpose such as a single dwelling house, a dual occupancy development or a seniors living development is

considered appropriate".

Council at its meeting of September 25 resolved to establish the Gosford Housing Trust to facilitate the provision of affordable social housing in the local government area.

Officers stated that: "To enable council to consider the possible use of 10 Macleay Ave, Woy Woy, for the purpose of an affordable housing project, a further report will be prepared outlining how the proposed Housing Trust might facilitate this project once the Trust has been established and developed management protocols".

Council agenda SF.15, 1 Apr 2008

Medals for storm relief efforts

Staff and volunteers from five Peninsula rural fire brigades were presented with State Medallions on March 27, for their contribution to the Hunter and Central Coast storm relief last year.

Empire Bay, Killcare, Patonga, Pearl Beach and the Bays Brigades were among other Rural Fire Service personnel who assisted with the "enormous clean up and recovery effort" during last year's storms.

The medals were presented

by Member for Gosford Ms Marie Andrews to more than 300 staff and volunteers on behalf of the Minister for Emergency Services Mr Nathan Rees.

Ms Andrews said the contribution made by the fire service was outstanding and the volunteers and staff involved should be exceptionally proud of their efforts to assist the community during such difficult times.

"The storms caused devastation and heartbreak within the community, but our volunteers came to our aid, shining as a light in the end of the tunnel towards recovery," Ms Andrews said.

"Words cannot express the gratitude we owe these selfless volunteers, their efforts forever written in the history of our community.

"These are volunteers that we cannot live without.

"It is truly an honour and a privilege to not only stand in the presence of these people who sacrifice so much, but to be able to present them with this medallion as an acknowledgement of their enormous achievements."

**Press release, 27 March 2008
Marie Andrews, Member for Gosford**

Need Help with a State Government matter?



On Monday April 7, 2008 Marie Andrews MP will be at Ettalong Senior Citizens Centre from 1pm & Umina Library from 2pm Call Marie's office to book an appointment 20 Blackwall Road or PO Box 223 Woy Woy PH: 4342 4122 FAX: 4341 2368 Email: gosford@parliament.nsw.gov.au

Aquarium Treasures
RELAX WITH FISH
We can come to you!
Spectacular marine, tropical aquariums and ponds. Everything you need for fish and reptile keeping, packages, finance, professional advice, VIP club, home delivery, installations and servicing for home or office. Start a new hobby today!
Open 7 Days
4323 3344
Brisbane Water Drive, Point Clare (opposite the train station)

Peninsula General Plumbing Umina
Specialising in new work
Glenn Becker Proprietor
LICENCED PLUMBER AND DRAINER
4341 1992
0412 930 393
Lic. No. L3757

Rebuff on amenities block

Gosford Council officers have recommend that council refuse an application to retain the men's amenities building west of the Ocean Beach Surf Life Saving Club.

Officers stated that the retention of the building "will have a detrimental impact on the scenic quality of the foreshore and impact unreasonably on the views of adjoining properties".

The application to retain the existing western amenities block was supported by information from the club stating "the new club building is of insufficient size due to the growth in membership".

The applicant wanted the amenities block to be refurbished, including removal of toilets and showers.

Bricks would be rendered to match the new club, a new roller door added, and a driveway built from the existing car park to a new entry.

The applicant stated that the amenities block would have provided a storage area for council's lifeguards and the Ocean Beach surf club.

Council's assessing planner stated that the first application, when the new surf club was being constructed, was notified to the strata manager of affected unit owners located opposite the site.

The planner stated: "Unfortunately the Strata Manager did not notify relevant unit owners who therefore were unaware that under the s96 proposal the building was to be lengthened by eight metres and impact on their southerly ocean view."

"The s96 application was then approved as there were no objections received, albeit views were in fact impacted upon."

"As construction began affected unit owners realised the extent of the impact and complained to council."

"Resolution of the matter was achieved by the affected unit owners being advised that both the existing amenities buildings would be demolished."

The planner also stated that the removal of the old amenities buildings was seen as a way to reduce the anti-social behaviour in the area.

Council agenda ENV.28, 1 Apr 2008



Miss Relay and the Hazards

Relay raises \$61,000

More than 700 local residents walked around Woy Woy Number 1 Oval recently for the Peninsula Relay For Life, raising more than \$61,000 for local cancer support programs and cancer research.

More than 45 teams walked around the oval, many right through the night.

Organising committee chairperson Ms Viv Corcoran said:

"We heard a passionate speech by local cancer survivor Vicki White at the Opening Ceremony, followed with an incredibly moving and personal story from Shane Emmett about his time spent with his sister Belinda."

Money raised through the Peninsula Relay For Life will help the Cancer Council improve the lives of local cancer patients and their families through initiatives like the Support and Information Pack which put patients in touch with the

closest sources of support.

Press release, 17 Mar 2008
Lesley Chart, The Cancer Council
NSW Central Coast Office

More photos on page 18

Market day on Saturday

The Umina Uniting Church will hold its first market day for this year on Saturday, April 5, from 8am to 1pm.

"The usual well-stocked stalls with tempting treats including the luscious morning teas and hot scones," parish secretary Ms Annette Strong said.

"The barbecue, situated outside in Ocean Beach Rd, serving bacon and egg rolls, is a great starter to the day."

The Central Coast Leagues Club Barbershop Chorus will provide entertainment at 10am.

"Listen to these singers while

enjoying your Devonshire morning tea," said Ms Strong.

Ms Strong said that money raised from the activities supported the mission and ministry outreach of the Parish which included weekly playgroup, kids club and youth group plus courses ranging from toddlers to teenagers and parents.

A winter market day is planned for July 26 and the Spring Fair is on October 25.

For more information, telephone 4341 0793.

Press release, 8 Mar 2008
Annette Strong,
Umina Uniting Church

Car boot sale for charity

Local charity Rainbow Love will be holding a Rainbow Gate car boot sale on Saturday, April 5, at Umina Beach, to raise money for local boy Levi Ransfield.

Nine-year-old Levi suffers from a rare degenerative bone disease and was the main reason behind the charity's establishment.

Rainbow Love has been fundraising for more than six months in order to help Levi and his mother Danielle find safe and

affordable transport.

The car boot sale will begin at 8am to 3pm and will be held at 207 West St, Umina.

The cost will be \$10 per car and will go towards helping Levi buy a vehicle suitable to his needs.

The event will also support local artists, craft persons and musicians through exhibitions, classes and concerts.

The Drumbala group will also be performing on the day.

Press release, 27 March 2008
Susie O'Donnell, Rainbow Love

Reconditioned Washing Machines, Fridges and Dryers from \$149 - all with warranty



See our range of quality new and factory seconds vacuum cleaners



JAYARS APPLIANCE SERVICE

13-15 Mutu St - Woy Woy
4342 3538 or 4344 3384



Patonga Bakehouse Gallery

Warwick Webb
Marine Artist
all of April



Drawings by
Jocelyn & Robin

Open Sundays 11am - 3pm
or by appointment

19 Bay St Patonga

4379 1102

Market Day

Umina Uniting Church
346 Ocean Beach Road
Sat. 5th April, 8am -1pm
Featuring Central Coast Leagues Club Barbershop Chorus at 10am

Wide Variety of stalls -
cakes, jams, crafts, plants,
2nd hand books, cards,
sweets, trash & treasure,
Avon, hot scones,
morning teas, BBQ,
drinks, Alpha candles



New Notices for Transport Operators of Heavy Vehicles

The NSW Roads and Traffic Authority wishes to advise of new Notices as described below that came into effect on January 1 2008

- 4.6 Metre High Vehicle Route Notice 2008 (covers high vehicles, such as livestock crates)
- Class 3 Semi-Trailer Exemption Notice 2008 (covers certain longer trailers, including 48 foot trailers)
- Rear Overhang Limit Notice 2008 (covers forklifts carried at the rear of other vehicles)
- Refrigerated Semi-Trailer Exemption Notice 2008 (covers insulated vehicles used to carry chilled or frozen goods)
- Agricultural Machine Combination Notice 2008 (covers combinations used for carting fruit and vegetables)
- Controlled Access Bus Notice 2008 (covers buses between 12.3 and 14.5 metres long)
- Special Purpose Vehicle Stand and Operate Notice 2008 (covers those vehicles with booms, jibs, platforms, outriggers and the like that extend beyond vehicle while operating from a stationary position)

Drivers operating any of the vehicles covered by a Notice are legally required to carry a copy of the current Notice in the cab of their vehicle. Fines of up to \$318 can apply for failure to carry a current Notice. All the Notices listed above can be downloaded and printed at: www.rta.nsw.gov.au/heavyvehicles/downloads/permitnotices/permit_notices_dll.html

For information about traffic conditions please contact the RTA's Traffic Information Line on 132 701.

No funds for viewing platforms

Bulldozers have recently cleared large areas of trees and vegetation, and levelled the dune area, at Ettalong Beach in preparation for building viewing platforms.

Discussion with Council's project officer David Medcalf, confirmed Council had provided some monies for this work but I understand from Council that the viewing platform funding position is dependent upon securing \$300,000 from the Ettalong Beach Club and a similar amount from a regional partnership

Forum

grant.

With the Club experiencing financial stress, it is unlikely that the \$300,000 will be available and it is understood the regional grant is dependent on Council receiving this commercial co-contribution from the Club.

So Council has bulldozed the vegetation and toilet block before securing any funds to build the viewing platforms.

Monty Python is alive and well

and working for Gosford Council!

The Department of Lands recommendation to Council with regard to a third viewing platform on the reserve stated "It would appear the reserve in general has higher priority funding issues than the addition of a third viewing platform especially if there are already two of these in place".

Council has ignored this advice which will surely jeopardise any grant from the State Government.

**Michael Gillian
Ettalong Beach**

Don't change our village

Forum

same way,

- how far down the track any plans for re-development have gone so far, and
- if anyone has started an action group to help voice the views and concerns of local people about this issue.

Any re-development of Umina needs to be done in a way that does not forever change the nature of the village we live in.

**Meredith Gilmore
Umina Beach**

Can anyone tell me if there is going to be a big re-development in West St, Umina?

I have heard some facts, and so many rumours, and would really like to know if it is true that Council is going to allow a major development in our village.

I chose Umina because it is a village, not a major shopping centre, and would be interested to know:

- how many other local people feel the

Casino or strip joint for Ettalong?

Resorts are passé, according to Lisa Pryor, writing in the Sydney Morning Herald (March 8).

She asks what will happen to these "luxurious white elephants with acres of granite and brass, costing a fortune to buildat such cost to the local environment."

She maintains that the "in" holidays today are to "discreet, low-rise, in sympathy with the natural surroundings" types of places.

She mentions that many resorts up and down the coast are up for sale including the Sheraton Mirage at Port Douglas.

They are changing hands and seeking new names in the hope that they can entice the public to part with their cash for cut-price holidays.

Of course, we on the Peninsula know all about this.

The "Outrigger" has already changed hands and is now "The Mantra" owned by MFS, a business firm with many financial problems according to the press.

Forum

Letters to the editor should be sent to:

Peninsula News
PO Box 532,
Woy Woy 2256

or

mail@PeninsulaNews.asn.au

See Page 2 for contribution conditions

Now it's there of course, we are stuck with this over-sized monstrosity.

We know that the height restrictions and building code will now be ignored in the buildings which will join it along the Esplanade, so that it doesn't look too lonely.

We also know that those

people pulling the strings behind the scenes have "great" plans particularly for the Ferry Beach.

They now have 47 years left of the lease to play with and even if no ferry emerges, they can exploit the space for merchandise outlets: McDonalds perhaps, Wendy's, games arcades, who knows?

It's all under wraps unless you are a stakeholder.

The peace and tranquility of the area enjoyed for so long by ordinary Australians, is to be exchanged for the razzmatazz of a Gold Coast, where people can part with their money and supposedly forget the state of the planet.

Just think, we might get a casino or a strip joint.

It is such a pity that these things are encouraged by people lacking vision, who are so behind the times.

As Lisa Pryor sums up, "the best thing you can do to ensure a holiday destination does not end up a white elephant is to keep as much of the natural environment as possible. This is true paradise life. This is one of the few things that never go out of fashion."

**Margaret Lund
Woy Woy**

Packs of marauding vandals whose mindless activity is constantly overtaxing the resources of small communities like the Woy Woy Peninsula were out in force again on Friday night.

Our Peninsula is just one of many communities which are desperately trying to raise scarce money to put skate board parks and other amenities in place.

These attacks on the communities infrastructure also

Forum

serves to expose to over-taxed and under-represented ratepayers just how inadequate our current laws and police presence during the small hours are!

**Edward James
Umina**

You can do more than you think

You can provide relief in times of crisis, give care to the frail, sick and elderly, show commitment when others turn away.



Donate today at redcross.org.au call 1800 811 700 or visit Coles.

Sponsored by **Peninsula News** Community Access

Contributions

The Forum page/s presents an opportunity for Peninsula Residents to have their say. Any opinions expressed on the forum page/s are not necessarily those of the editor or management of Peninsula News. Contributions can be emailed, sent on disks or by handwritten letter. Include the date, your name, address and phone numbers. Name and Suburb will be published. Anonymous contributions will not be included. Submissions may be published in edited form. All accepted contributions also appear on our website:

www.peninsulanews.asn.au

Need help with your computer?



\$30 an hour. First time customers get free travel within certain zones.

Ask for details.

Call Jethro 0438 145 660

I.T. Technician, Certificate IV - IT, Programming and Networking

Advertise in **Peninsula News** Community Access

Reach over 30,000 people every fortnight

Published by Ducks Crossing Publications
The Peninsula's own Community Newspaper

Freely available throughout the Peninsula

Phone: 4325 7369
www.peninsulanews.asn.au

This Size Starts from only \$50 a week!

Book fair success

The 32nd Annual Pearl Beach Easter Saturday Book Fair was an "outstanding success" according to Pearl Beach Progress Association president Mr Rod Craig.

"The early crowds who gathered outside waiting for the 10am opening contributed to the carnival atmosphere that prevailed throughout the day," Mr Craig said.

Association publicity officer Ms Lynne Lillico said: "The large collection of pre-loved books accommodated all tastes including encyclopaedia, gardening and cook books, travel, academic, fiction and a large collection of children's books."

Ms Lillico said the Easter Saturday Book Fair was first held in 1977 and since that time had grown into an "exciting day" where a "relaxed atmosphere" in the newly refurbished Pearl Beach Memorial Hall provided the ideal setting to search out a bargain book, or purchase something unusual at the "Collectables" stall.

"The traditional home made cake stall sold out early, and the plant stall provided a large collection of potted plants to choose from," Ms Lillico said.

Members of the Pearl Beach Progress Association volunteered



The Pearl Beach Book Fair

their time to prepare for the annual book fair, and to provide information about coming events and activities being undertaken throughout the year.

Proceeds from the book fair were used to improve local community facilities.

Press release, 24 Mar 2008
Lynne Lillico, Pearl Beach Progress Association

Federal Member visits Mary Mac's

Member for Robertson Ms Belinda Neal has visited to Mary Mac's Place, Woy Woy.

Mary Mac's Place serves more than 350 meals a week to families in need in the Peninsula area and provides referrals for guests to community services on the Central Coast.

The Woy Woy charity has experienced a considerable rise in the number of guests accessing its services, with a 58 per cent increase in the last 12 months.

The charity expects to serve 12,000 meals this year.

"My visit to Mary Mac's Place gave me a greater understanding into the needs of Peninsula families," Ms Neal said.

"The problems of rapidly rising grocery and petrol prices and homelessness are increasing pressure on the household budgets of Australian families at

the moment," Ms Neal said.

"A report into the growing problem of homelessness is currently being prepared by the Government."

Ms Neal said charities such as Mary Mac's provide struggling families on the Peninsula with a nutritious meal.

"Even renters and home owners are finding it difficult to make ends meet and cook nutritious meals because the prices of fruit and vegetables remain unaffordable for some."

"The Federal Government has asked the Australian Competition and Consumer Commission to inquire into rises in grocery prices, which are affecting families as well as the charities providing relief to those families," Ms Neal said.

Clare Graham, 27 March 2008

Press release, 18 March 2008

Belinda Neal,

Member for Robertson



4341 8727





Cnr. Blackwall Road and Terry Ave, Woy Woy

Living Life to the full




We aim to be the leading provider of quality, affordable and flexible residential and community care options in the areas in which we operate.




Cooinda Village
Neptune Street, Umina Beach

This is a tranquil haven for both residents and their visitors, nestled amongst majestic gum trees. Select from 62 spacious 1 and 2 bedroom self care units, surrounded by level landscaped gardens. Priced from \$200,000.

Don Leggett House

Our most recently opened hostel has 70 spacious units on offer, and incorporates a dementia specific unit, all in a home like environment. Units are priced at \$200,000.



Peninsula Village Retirement Centre
91 Pozieres Avenue, Umina Beach

Relax and enjoy a wonderful lifestyle amongst friends. Select from 1 and 2 bedroom self care units or single and double hostel units. Priced from \$140,000 for self care units and from \$135,000 for hostel units. Peninsula Village also offers a 96 bed nursing home.



A charitable non-profit community owned organisation

For further information
free call **1800 650 070**
or phone **4344 9199**

during business hours, or for a free brochure, please send the coupon to:

Peninsula Village Ltd
PO Box 333, Woy Woy NSW 2256

I am/we are interested in:

Self care

Hostel

Dementia specific

at

Peninsula Village or

Cooinda Village self care

Name _____

Address _____

State _____ Post Code _____

Phone _____

2190969 wk34

**Clarkes Amcal Pharmacy
Woy Woy
Health Advice**



What is Diabetes?

Insulin is the hormone that regulates our levels of sugar in our blood, Diabetes is when our bodies fail respond to our insulin levels or we can't produce enough insulin. This produces high blood glucose (sugar levels also known as hyperglycaemia. There are 2 main types of diabetes known as Diabetes Mellitus Type 1 and Diabetes Mellitus Type 2.

Diabetes Mellitus Type 1

This form of diabetes is also referred to as juvenile-onset or insulin dependent diabetes. Type 1 diabetes affects 10% to 15% of all diabetics and usually occurs in diabetics under 30 years. Onset is fast with weight loss, weakness, excessive thirst and urination. Treatment usually involves daily insulin injections for life, daily checking of blood sugar levels, healthy eating and regular exercise.

Diabetes Mellitus Type 2

This form accounts for 85% to 90% of all diabetics and is also known as adult-onset or non-insulin dependent diabetes. While it usually affects people over 45 years, there's a disturbing increase of cases amongst young people. Onset is slow and symptoms may be mild. They include blurred vision, skin infections, slow healing of wounds, numbness in the feet, increased thirst and urination. Almost all type 2 diabetics are overweight with a family history of diabetes, If you have any of the following it's vital you consult your GP for a blood sugar check: Family history of diabetes; High blood pressure; High cholesterol; Aged over 45; Overweight

Managing Diabetes

The aim of treatment is to prevent damage to organs and blood vessels by keeping blood sugars normal, treating blood pressure, lowering cholesterol, losing weight and quitting smoking. While there's no cure yet, this serious condition can be managed with supervision from a team of health professionals including your: GP, Dietician, Podiatrist, Optometrist and your Amcal Pharmacist.

Things to do every day.

Measure your blood sugar and aim to keep your readings in the normal range. Limit alcohol to 2 drinks (or less) for men, one for women with 2 alcohol free days a week for everybody.

Important things to do regularly

Check your feet every 6 months. Wear sensible footwear Have your eyes examined every 1 to 2 years Check blood pressure, cholesterol and triglycerides and have a kidney test every 12 months Watch for infections as illness and travel will affect your blood sugar levels Have the recommended immunisations (eg: influenza vaccine)

Three support groups at health centre

The Peninsula Women's Health Centre will be holding three support groups during the month of April.

Women4Women is a new group designed to support women who are living with any kind of long term health issues such as depression, asthma, arthritis, heart problems and anxiety.

Community development worker Ms Kate Bradfield said the focus of the group was on a healthy mind, body and spirit.

"The group is designed to build resilience and to facilitate a women's journey to complete health in leading a more active and healthy lifestyle," Ms Bradfield said.

The next group will be held on Wednesday, April 9, at 10.30am to 1pm.

Cost for attendance is a gold coin donation.

For more information, telephone 4337 2203.

"Coffee Morning is a group for all women who would like to get to know other women in the area," Ms Bradfield said.

"It is a social get together over morning tea and is a great opportunity to meet women especially if you are new to the area or feel isolated.

"The centre has no childcare facilities however you are welcome to bring your children who will remain under your supervision."

The next coffee morning will be held on Wednesday, April 2 from 10am to 12noon.

Cost is a gold coin donation and no bookings are required.

For more information, telephone 4342 5905.

"Robyn Collins will also be continuing her relaxation meditation group every Thursday afternoon from 1pm to 2.15pm," Ms Bradfield said.

"Reiki Meditation is a guided relaxation and energy healing technique which promotes a feeling of peace and well-being.

"Meditation has a number of health benefits including reducing high blood pressure, decreasing muscle tension and headaches and enhancing the immune system."

The cost is \$5. For more information, telephone 4341 4200.

The Peninsula Women's Health Centre is located at 20A McMasters Rd, Woy Woy.

**Press release, 20 March 2008
Kate Bradfield,
Peninsula Women's Health Centre**

Permanent home for yoga

A yoga business has found a new permanent home in Woy Woy.

Facilitators John and Kerry Wilson claim that the yoga centre will be the only dedicated yoga studio on the Peninsula.

"The centre is private, air conditioned and fully equipped.

"We offer yoga programs suitable to all body types and all levels of fitness.

"There is a general misconception that yoga is only suitable to the super flexible.

"This is simply not true.

"The various yoga postures can be modified and adapted to every body shape.

"We cater for people recovering from injury or illness, the over 55

year olds and the very athletic.

"Our timetable is extensive, day, evening and weekend classes are available as well as private tuition if required.

"In addition to a healthy body, yoga can help you to relax and unwind.

"Each class is structured with an emphasis on calmness and relaxation.

"The centre also offers classes in pilates, prenatal yoga, tai chi and Qi Gong."

The Peninsula Yoga Centre will be located in Blackwall Rd, Woy Woy.

**Press release, 26 Mar 2008
John and Kerry Wilson,
Peninsula Yoga Centre**

Red Cross volunteer missed

Ettalong Beach resident Ms Frankie Oates will be dearly missed by the Peninsula community, according to Red Cross publicity coordinator Ms Amber Edwards.

Ms Oates passed away at the age of 87 on November 17 last year at Gosford Hospital.

"Frankie was involved in a number of charities, contributing her time and efforts to Red Cross, Samaritans, Anglicare, Lifeline, VIEW Club, the Fred Hollows' Appeal, Overseas Missions, as a pastoral carer for her church and a volunteer for other churches," Ms

Edwards said. "We will all miss her enthusiasm, kindness and caring nature."

After raising her family in Sydney and working for various charity groups she moved to the Peninsula in 1983 with her husband Walter.

Ms Oates joined the Wagstaffe Branch of Red Cross, becoming the honorary secretary not long afterwards and held the position until the branch closed in July 2000.

In 1992, Ms Oates received an OAM for her commitment and contribution to charity work in Sydney and on the Central Coast.

Her husband passed away in 1993 and she moved into an Ettalong Beach unit with a double garage so that would be able to continue her charity work and Red Cross Shop from her house.

In 1996, she was awarded a

Red Cross Service Award for her work in the community.

After Wagstaffe branch closed, Ms Oates joined the Umina Beach branch, where she was a member until the time of her passing.

Ms Oates was an active member of the Umina Beach branch, helping with donations, trading tables, street stalls and fundraising ideas.

She promoted Red Cross merchandise for many years, particularly at Christmas time.

Ms Oates retired from the service in 2006 due to health problems.

"Her memorial service was attended by nearly 100, with people coming from as far as Padstow to remember the life of a wonderful member of their community and ours," Ms Edwards said.

**Press release, 11 March 2008
Amber Edwards,
Australian Red Cross**

**Now Open
Peninsula Yoga
Centre**

**4/94 Blackwall Rd Woy Woy 2256
Ph: 4342 5000 Mob: 0427 44 22 30
www.peninsulayogacentre.com.au**

**Experience the benefits of yoga in the
ambience & serenity of the only
yoga centre on the Peninsula.**

Yoga classes for everyone !

**Central Coast
Case
Management
Services**

You should contact Central Coast Case Management Services when you or a person you know is having difficulties coping at home & requiring assistance with day to day tasks.

We can help you by linking you to services you need.

- Coordinating a variety of services
- Assisting carers in their role

Contact us to discuss if you are eligible

**Ph: 4343 1888
113 Blackwall Rd
Woy Woy**

**MASSIVE HEALTH CRISIS
IN LIFESTYLE RELATED
BOWEL PROBLEMS**

"CONSTIPATED" (worms) bloated, headaches, mood swing, back & stomach pain, lethargic, fatigued, reflux, belching, cravings, itchy anus and ears, diarrhoea cycles, joint pain, overweight, haemorrhoid's, insomnia, ringing ears, hot flushes(hormones?), enemic, allergies, candida, plus Dr's misdiagnosed diverticulosis & irritable bowel? Is this U?

Well that was me (tried everything)
Now all gone FULL STORY

ph: 1300 669 664
e: DRF206@gmail.com
magichealing.info

Before Tapeworm After Tapeworm

Council may remove two boat ramps

Gosford Council may pay \$5000 to knock down and remove debris from two boat ramps on St Huberts Island.

Council officers recently briefed council on the boating facilities identified within the drainage reserves of St Huberts Island, which had been listed as needing a development consent or needing to be demolished due to safety concerns.

In May last year, 63 letters were forwarded to the owners of the facilities identified as requiring a development consent.

As of January, 47 of the 63 premises had complied with council's request.

Council officers stated that they had either removed the facility or submitted a development application to formalise its continued use.

Of the 16 properties that had failed to act on the request, a number of different reasons had been provided to council officers, including a simple oversight in failure to submit an application to complex legal issues in relation to claiming costs from their neighbour in situations where an individual facility was now required to be shared.

Council officers stated that action was continuing to formalise the 16 remaining facilities including forwarding the property owners follow up letters reminding them of their responsibilities.

Part of council's previous resolution also required the demolition or repair of boat ramps that were in such a state of disrepair that they had become "a danger to the public or prejudicial to persons or property in the neighbourhood".

Council officers stated that 16 boat ramps were identified as needing to be demolished or repaired.

Letters were forwarded to the owners of the premises asking for immediate action to rectify the situation.

Officer stated that as of January, nine structures had been repaired, the owners of four structures were in the process of arranging for the work to be undertaken, the owner of one structure had asked for an extension of time to carry out the work due to lack of finances and two owners had advised the structure existed at the time they purchased the property and they had "never used it, do not want it, and would not pay to have it repaired or demolished".

Officers stated that it was anticipated that the property owners who wanted to retain their boat ramp would complete the necessary work by June 30.

Officers further stated that council, as the owner of the canals, "may need to consider removing the two ramps that are in poor condition, present a potential risk and are unwanted by the adjacent property owners".

Council agenda ENV.21, 1 Apr 2008



Boating facilities around St Huberts Island

Patonga Dr works expected

Work is expected to commence next month on stage 2 of the Patonga Dr rock face stabilisation works, following Gosford Council's acceptance of a tender on March 25.

The Rix Group were awarded the tender for the work, which includes the scaling, supply and installation of 1.5m & 3m rock bolts, rock fall mesh, shotcrete of approximately 400m of rock face and associated

work along Patonga Dr, Pearl Beach.

The construction period is four weeks.

Tenders for the work closed on March 4, with a total of seven tenders received.

Two of those tenders were received after the deadline and were excluded from the assessment.

Council stated that the tender by The Rix Group Pty Ltd presented

the most positive benefits to council.

It stated that the comparison indicated that The Rix Group Pty Ltd ranked highly against all the stated criteria.

It stated: "The company has completed similar type of work for City of Canada Bay Council, Barclay Mowlem and Thies John Holland".

Council agenda COR.20, 25 Mar 2008



Stunning near new 4 bedroom home located in the heart of Woy Woy CBD. Impeccably appointed with quality inclusions throughout and superb indoor/outdoor entertaining areas. Currently tenanted for \$380p/w and with the potential to operate a business from the premises (STCA) this home is perfect for families, investors or business people. Seize the opportunity as 2B zoned parcels of land in this position do not become available very often.

- Located opposite Deepwater Plaza Shopping Complex • Minutes from Woy Woy train station
- Two separate spacious living areas both with kitchens and bathrooms • Outdoor Spa
- Internal Laundry • Remote controlled carport door
- Close to Schools, Hospitals, Clubs and Restaurants • Potential for dual incomes
- 5000 litre concealed water tank



for sale \$650,000
view By appointment
agent Michael Reilly 0419 166 514 - michael@prdettalong.com

PRD nationwide

4344 5580

www.prdettalong.com

Marina abandons consultation process

Killcare Marina has abandoned plans to involve the community in the redesign of its facility.

The marina's chief executive Mr Michael Sparks said: "We wanted to involve the community in the form and substance of the development itself."

He said such an approach has been rejected by the community.

Instead, the Hardys Bay Residents' Group had "tried to approach the application in a traditional adversarial way", he said.

"We fail to see any win-win outcomes from this approach."

Mr Sparks said the preferred process had included preparation, analysis of an alternate marina design and upfront opportunity for groups to review the environmental impact assessment document prior to the development application lodgement.

"Subsequently, we made a series of presentations and communicated a need for change, and gave one alternative proposal.

"We communicated our desire to involve the community in the consultation process.

"Our overall objective was to encourage community involvement and foster meaningful two-way

communication.

"The process was not about agreement or disagreement but about the issues we would need to face and confront."

Mr Sparks said the company was currently "re-evaluating".

"We are trying to get approved the structure of a building for offices, retail space, recreational space, car parking improvements, appropriate repair facilities for vehicles, refuelling and a floating marina birth," Mr Sparks said.

"What we believe we and the public get is compliance with statutory requirements and improved customer service offering, facilities that satisfy current and future demand, improved public access including facilities for disabled people, including active-passive space, employment opportunities and business opportunities, improved access to vessels and increased economic performance.

"The development will result in a facility that's capable of providing customers and the public with world class berthing facility that is also using world best practice management techniques and compliance with legislative demand."

However, the Hardys Bay Residents Group has stated that it

was "concerned about the effects a larger marina would have on this community".

It stated it "would support a suitable modernisation of the current marina provided its size was limited to its existing footprint, building height and location".

It has also decided to seek legal advice, after having been told that the development application could go straight to the Planning Minister for determination, bypassing council involvement.

Resident's Group communications officer Mr Allan Wilson said that the project application would circumvent the local council approval process by using "Part 3A" of the Environmental Planning and Assessment Act.

"This process, disturbingly, reduces the involvement of the community in the decision-making process.

"The decision makers for applications made under this law are the Minister for Planning and Director General, Department of Planning."

Press release, 26 Feb 2008

Allan Wilson, Hardys Bay Residents Group

Lyle Stone, 4 Feb 2008

Interviewee: Michael Sparks, Killcare Marina

'Leave her alone,' says aged care home

The 83-year-old woman whose neighbour took advantage of her when she sold her home to move into aged care should be allowed to get on with her life, according to the manager of the aged care home where she now resides.

Patonga identity Ms Daphne Dicks was reported in Sydney media to have sold her home to her neighbour for \$825,000, only to see him sell it nine days later for \$1.2 million.

Woy Woy Community Aged Care general manager Ms Jennifer Eddy said she would rather forget what happened to Daphne so she can get on with her life.

"Daphne has settled in extremely well to her new home here at Woy Woy," Ms Eddy said.

"She was a very well known member of the Patonga community.

"Daphne has turned out to be a popular resident here because she is such a delight to have around.

"She loves going out on regular bus outings and participates in

exercise and art activities all the time.

"Daphne suffers dementia and only asks about her old home when she is reminded by other people."

Patonga Beach Tavern owner Mr Robert Osborne said Ms Dick was a well known and liked local of the area.

"Everyone in the community knew her in some way or another," Mr Osborne said.

"She was a very likable character and always full of laughter and energy.

"I was very sorry to hear about what happened to Daphne and her home.

"At that stage in your life it would be hard enough having to leave the place you love without getting taken advantage of.

"She was the kind of person that got on well with everyone."

The 83-year-old widow first bought the Patonga property with her husband more than 50 years ago as a holiday home and later retired there.

She never had children.

Clare Graham, 7 Mar 2008



Hundreds gather for funeral

More than 400 people gathered last month to farewell and celebrate the life of Booker Bay resident Ms Joan White at St Andrews Church, Umina.

Women from Ettalong Memorial Bowling Club provided a guard of honour and representatives from political and community organisations were present.

Coast Bowls News publicist Mr Bob Penson said Ms White was a valuable member of the Peninsula

community.

"Joan's community contributions over the years extended to organisational aspects of netball, swimming, craft, tennis, indoor and lawn bowls clubs and church associations," Mr Penson said.

"When she passed suddenly, it took her family and friends by surprise, leaving her family and particularly husband of 52 years, John, with a great store of memories."

Bob Penson, 28 March 2008

GOSFORD REGIONAL GALLERY
From Point Clare to Patonga
ARTISTS OPEN STUDIO WEEKEND
19th to 20th APRIL 2008
Open 10:00AM to 4:00PM SATURDAY & SUNDAY

COME VISIT SOME OF THE LEADING ARTISTS OF THE POINT CLARE TO PATONGA REGION IN THEIR WORKING STUDIOS.
The Gosford Regional Gallery is also promoting an exhibition at the Peninsula Community Centre Woy Woy, representing the visual art of artists from Point Clare to Patonga.

FOR FURTHER DETAILS OF BUS BOOKINGS AND MAPS OF THE ARTISTS OPEN STUDIOS PLEASE CONTACT THE GOSFORD REGIONAL GALLERY ON (02) 4325 0056

GOSFORD REGIONAL GALLERY & ARTS CENTRE
 36 Webb Street, East Gosford

artsnsw

PRINTED BY GOSFORD CITY COUNCIL, 49 MANN ST GOSFORD NSW 2250 JULY 07

WayWay
DENTAL CARE

109 Blackwall Rd Woy Woy
 Ph: 4341 1751

Surgery Hours
 Monday & Tuesday 9am - 7.30pm
 Wednesday to Friday 9am - 5.30pm

Graduating in 2001, and with international experience, it is with great pleasure that we introduce the latest member of our team, Dr Saif Hayek. As a special introductory offer we are giving a 10% discount for any patient who brings in this advertisement for their first visit (only) with Dr Hayek. This is a limited time offer and conditions apply.

Grant received for environmental education

Pretty Beach Public School has received a \$2500 grant as part of the State Government's Eco Schools Program.

The new program provides grants to schools to give them the opportunity to involve their students and community in developing and implementing environmental management projects.

The overall objective of the Eco

Schools Program is to support schools to develop best practice in environmental education and innovative solutions to environmental issues.

"This money will go towards establishing an organic vegetable garden," school principal Ms Vicki Redrup said.

**Newsletter, 20 March 2008
Vicki Redrup, Pretty Beach Public School**



Upgrade work has begun on the pedestrian crossing at Umina Public School

Crossing upgrade work starts

Upgrades to the supervised pedestrian crossing at Umina Public School have begun, according to the Member for Gosford Ms Marie Andrews.

Ms Andrews said that the upgrades were aimed at enhancing safety for young school children.

"The crossing, on Hobart Street, Umina, has been made safer for

pedestrians with the installation of kerb blisters on both sides of the road, and restricting the number of lanes through the crossing to two.

"This will improve driver visibility of pedestrians, particularly children, and eliminates dangers of a vehicle stopped at the crossing being passed by another vehicle."

Ms Andrews said upgrades

were expected to be completed by March 31, weather permitting.

"The lemma Government has contributed to these pedestrian upgrades on a dollar-for-dollar basis with Gosford Council," Ms Andrews said.

**Press release, 26 Mar 2008
Marie Andrews, Member for Gosford**

Bite at Woy Woy school

A Great Australian Bite will be held at Woy Woy Public School on Friday, April 4, as

part of a statewide annual fundraiser for Diabetes Australia-NSW.

Two students at the school have type one diabetes.

The event is held to help raise funds to find a cure for the disease.

"A bite can be anything from a morning tea with workmates to a community barbeque," Diabetes Australia-NSW public relations assistant Mr Trevor Tye said.

"Just by getting those who attend to give a donation, you can help Diabetes awareness, education, research and advocacy programs.

To register to host an event, telephone 1300 136 588 or visit the website at www.greataustralianbite.com.au.

**Press release, 25 Mar 2008
Trevor Tye, Diabetes Australia-NSW**

Ettalong wins in girls' cricket

The Ettalong Public School girls' cricket team defeated Kariong Public School on Friday, March 7.

Ettalong defeated Kariong by five wickets and scored a total of 89 runs.

"All the girls played well, particularly the bowlers," said Ettalong Public School publicity officer Ms Michelle Pathirana.

The Ettalong Public School's boys cricket team competed against Woy Woy South Public School on the same day.

"The boys from Ettalong won

the toss and elected to bat, scoring a total of 48 runs," Ms Pathirana said.

"Despite Ettalong's best efforts to defend this target, Woy Woy

South won with a few overs to spare.

**Press release, 17 March 2008
Michelle Pathirana, Ettalong Public School**

**106% Mortgages
DEFAULTS CONSIDERED**

- Residential
- Rural
- Commercial
- Construction
- Seniors Loans

1300 799 063
www.maxfinancial.com.au
Call us we are local and have the experience to help you

Umina's Finest Tobacconist & Darrell Lea Chocolates

**Cnr South and West Street
(New entry from South Street)
Umina Beach - Open 7 days
Monday to Friday - 8am to 6pm
Saturday & Sunday - 8am to 4pm**

GRAWILL A1 USED CARS

Call Ray, your local man from the Peninsula for the best car deal.

- Best trade-in prices
- No deposit on finance T.A.P.
- We will come to you
- All Peninsula residents receive a full tank of fuel on delivery



Car of the Month!
Ford Fairlane
Auto, Power Steer, Air Con
Ghia Luxury
\$12,990
AP - 03 - HO

Mitsubishi Lancer MR
Manual, Air Con, Power
\$7,990
MAS - 52K

Toyota Landcruiser
Auto, Air Con, Power Steer
\$19,990
AGE - 57M

KIA Pregio Van
Manual, Air Con, Diesel
Now **\$18,990**
AT - 14 - RS

ELOAS Refills Available

DL 233

296 Manns Road, WEST GOSFORD Ph: 4321 1300

What's On in and around the Peninsula

Listings in this section are free to not-for-profit community groups although a subscription to help support Peninsula News would be appreciated.

Many events listed take place at the following locations:

BFC, Beachside Family Centre, Umina Public School

CWA, CWA Hall, Anderson Park, Brick Wharf Rd, Woy Woy

EBACC, Ettalong Beach Arts & Crafts Centre, Kitchener Park, Cnr Picnic Pde & Maitland Bay Drive, Ettalong 4341 8344

EBWMC, Ettalong Beach War Memorial Club, 211 Memorial Ave., Ettalong 4341 1166

ECC, Everglades Country Club, Dunban Rd, Woy Woy 4341 1866

EMBC, Ettalong Memorial Bowling Club, 103 Springwood St Ettalong 4341 0087

EPH, Ettalong Progress Hall, Memorial Ave, Ettalong

ESCC, Ettalong Senior Citizens Centre, Cnr. Karingi St & Broken Bay Rd Ettalong 4341 3222

MOW, Meals on Wheels Hall, Cnr Ocean Beach Rd and McMasters Rd.

PBPC, Pearl Beach-Patonga Chamber Of Commerce, (meets at) Pearl Beach Café, 1 Pearl Pde, Pearl Beach.

PBPH, Pearl Beach Progress Hall, Diamond Rd, Pearl Beach 4342 1459

PCC, Peninsula Community Centre, 93 McMasters Rd, Woy Woy 4341 9333

PCYC, Osborne Ave., Umina Beach 4344 7851

PWHC, Peninsula Women's Health Centre, 20a McMasters Rd Woy Woy 4342 5905

UCH, Umina Community Hall, 6 Sydney Ave., Umina Beach 4343 1664

WH, Wagstaffe Hall, Cnr Wagstaffe Hall & Mulhall St Wagstaffe

WWAC, Woy Woy Aged Care, Kathleen St 4353 4224

WWEC, Woy Woy Environment Centre, 267 Blackwall Road Woy Woy 4341 7974

WWLC, Woy Woy Leagues Club, 82 Blackwall Rd Woy Woy: 4342 3366

WWPH, Woy Woy Progress Hall, 76 Woy Woy Rd

DAILY EVENTS

Woy Woy Pelican Feeding, 3pm Pelican Park, Fishermans Wharf.

Playtime Mon-Fri 9am, Little Gym PCYC

TUESDAY

First Tuesday of every month

Buffalo Primo Lodge No 9, 7pm, UCH.

Second Tuesday of every month

True Blue Meeting, 1.30pm; Toastmasters, 7pm, EBWMC Get Together afternoon tea, ESCC,

Pearl Beach Craft group, PBPH, 1.30pm.

Stroke recovery group, 11.30am, MOW.

Diabetics Support Group, 10am, ECC

Third Tuesday of every month

Burrawang Bushland reserve bushcare, Nambucca Dr playgrnd 9am 4341 9301. Buffalo Lodge Knights Chp9, 7pm, UCH

Woy Woy Peninsula Arthritis Branch, 10am, enq: 4342 1790, MOW

Fourth Tuesday of every month

Playgroup for Aboriginal & Torres Strait Island families. BFC Toastmasters, 7.15pm, EBWMC Combined Pensioners assoc afternoon tea, enq: 4341 3222, ESCC

Every Tuesday

Woy Woy Blood Bank - Ocean Beach Road, Woy Woy 1pm to 7pm

Chess Club EBWMC 1pm enq: 4341 8748

Woy Woy Blood Bank welcomes donations Ocean Beach Road, Woy Woy 1pm to 7pm

Free Tax Help by Appt., School for Seniors (Cards, Craft & Games) 9am; Playgroup 9am; Occasional Care, 9am; U3A Courses, Pre-School Playgroup, 12.30pm; Over 55s Learn To Play Bridge, 1pm; Stroke Recovery, 2pm; The Web, from 2pm; Dance & Theatre School, 3.45pm; Brophy Circus Academy, 4.30pm; Belly Dancing, 4.30pm, PCC.

Circuit Boxing (Women) 9am, Boxing/fitness training, 4pm (Junior), 5pm (Senior), Breakdancing, 5pm; Gym Sessions 8am; Gym Circuit 9:15am & 6pm; PCYC

Rotary Club of Woy Woy, 6pm, ECC

Ladies Indoor Bowls-9am; Handicraft-9am; Cards-12.30pm; Computers, 9am, ESCC .

Alcoholics Anonymous 6pm John the Baptist Church Hall, enq: 4379 1132

Carpet Bowls; 10am, Card Club; 7.15pm, Chess Club, 1pm, EBWMC

Tai-Chi classes, 9.30am (ex sch hols), enq 4360 2705, WH

Folk Art 9.30am, Silk Dyeing 1pm, EBACC.

Children's story time, Umina library, 10.30 am (Except Jan).

Sahaja yoga meditation, 10:30am enq: 4328 1409, CWA

Playgroup 10am Kids 0-5yrs, WWPH, enq: Juhel 4342 4362

Woy Woy Blood Bank, 11.15am to 8.45pm, session time 1pm to 7pm, Ocean Beach Rd, Woy Woy Tap Dancing, EPH, 6pm, enq: 0438 033 039

Tai Chi WH 9:30 am Enq: 4360 2705

Supported Playgroup for first time and single parents BFC Enq: 4340 1111

WEDNESDAY

First Wednesday of every month

Older women's network, 10.15am, enq:4343 1079, WWLC

CWA social day, 10am, handicrafts, 1pm, enq: 4344 5192, CWA Ettalong Ratepayers & Citizens Progress Association, 7.30pm, EPH

Second Wednesday of every Month

Red Cross, Umina branch meeting, Umina Uniting Church Hall, 1:30pm.

Woy Woy Auxiliary, 10am enq: 4344 2599.

Umina Beach Probus Club, 9.30am, ECC

Fourth Wednesday of every month

Everglades Probus Club, 10am, ECC, enq: 4341 0664

Every Wednesday

Al-anon/Alateen family support group "The Cottage" Vidler Ave Woy Woy, 12:30pm, 7pm.

St John's Ambulance; 7pm, Meals on Wheels

St John's Ambulance; Brisbane Water Cadets, 6.30pm - 8pm, Enq: 0404 748 471.

Free Tax Help by Appt., Occasional Care, School for Seniors, 9am; Playgroup, 10am; Bridge Club, 9.30am & 7.30pm; The Web, from 2pm, Physical Culture Club, 3.45pm, Coast Care Counselling Judo, 5pm; Weight Watchers, 6pm; Belly Dancing, 7.30pm; PCC. Peninsula Choir rehearsal 7.30pm St Andrews Hall Umina.

Brisbane Waters Scrabble Club, MOW 6pm, enq: 4341 9929.

Seniors fitness EPH 9am, enq: 4385 2080.

Indoor Bowls 9am; Fitness 1pm Leatherwork 9am; Table Tennis 9am. Scrabble 1pm; Computers, 1.30pm, ESCC

Gym Sessions 8am (Incl Self Defence for Young Women 1pm; Gym Circuit 6pm; Circuit Boxing (Women) 9am, Boxing/fitness training, 4pm (Junior) 5pm (Senior), PCYC

Oils & Acrylics 9am, Pastels & Drawing 11.30am, EBACC, Children's story time, Woy Woy library, 10.30 (Exc Jan).

Alcoholics Anonymous 12.15 & 6.30, St John the Baptist Hall, Blackwall Rd, Woy Woy. Handicraft CWA, 9am, enq: 4341 1073.

Country Women's Association (CWA) Umina Beach craft day, 9am - noon, CWA Hall, Sydney Ave, Umina, enq: 4341 5627.

Rotary Club of Umina, 6pm, ECC

Dance Club, 1pm, EBWMC

THURSDAY

First Thursday of every month

Brisbane Water Senior Citizens, 1pm; EBWMC

Second Thursday of every month

Women's Health Clinic Enq 4320 3741 PWHC

Australiana Bus Trips PCC

Third Thursday of every month

Brisbane Water Senior Citizens, 1pm; EBWMC

Fourth Thursday of every month

9am Free immunization clinic for Aboriginal & Torres Strait Island children 0 - 5 years, BFC Umina Probus, ECC, 10am. Women's Health Clinic; PWHC 4320 3741

Last Thursday of every month

Socrates Cafe Group Entréz 4 Booklovers Cafe, Umina 5:30 - 7pm Enq: 4367 4730

Every Thursday

Al-anon/Alateen family support group "The Cottage" Vidler Ave Woy Woy, 12:30pm Creative Writing, CWA, Enq 4369 1187

Childrens Art, 4.30pm, 15th Oct Occasional Care, 9am; Music Program, 9am; Yoga, 10am; School for Senior Australiana, 10.30am; Tai Chi, 11.30am & 7.30pm; Bridge, 12pm; The Web, from 2pm; Brophy Circus Academy, 4pm; Kids' Yoga, 4pm;

Belly Dancing, 6.30pm & 7.30pm; Coast Care Counselling PCC Free entertainment 6.30 pm, School for Learning/Seniors 9am; Senior Snooker 8.30am Ballroom Dancing, 10am, Trivia, 7pm, Indoor Bowls, Fishing Club Raffle 5.15pm, EMBC.

Bouddi Women's Drumming, 2pm, 73 Highview Rd Pretty Beach, enq: 0425 229 651.

Scrabble, 12.30pm. WWPH, Children's art classes 4.30pm, EBACC

Card Club, 1pm; Chess Club, 7.30pm, EBWMC

Tai Chi 11.30am & 3.45pm; Dancing 9am; Indoor Bowls, 9am; Table Tennis, 1.45pm; Cards noon, ESCC

Children's story time, 3 - 5 yrs Umina library, 10.30am (Exc Jan) Gym Sessions 8am, Gym Circuit 9am & 6pm Circuit Boxing (Women) 9am, Boxing/fitness training, 4pm (Junior), 5pm (Senior) PCYC .

Social Tennis 9am-12pm, Pearl Beach Courts, enq: 4369 3195.

Adult tap dancing, EPH 10am; enq: 4342 3925

Fairhaven Services Cash Housie, Ettalong Bowling Club 7.30pm

Dance, 9am - 11:30am, ESCC, enq: 4344 3131

Pilates WH 9:30 am Enq: 4384 5005

Mah-jong WH 2pm Enq: 4360 2178

Yoga WH 5:30 pm Enq: 4323 1859

FRIDAY

First Friday of every month

Legacy Ladies, 9am; EBWMC

Second Friday of every month

Bookclub 10:30am enq: Mandy 4342 2482,2pm

RSL Sub Branch Meeting EBWMC, 2.30pm.

Third Friday of every month Legacy Ladies, EBWMC, 9am, enq: 4343 3492.

Fourth Friday of every month

South Bouddi Peninsula Community Assoc, WH, 1.30pm, enq: 4360 1002.

Civilian widows, ESCC, 1pm. School for Seniors Bushwalking, PCC

Every Friday

Kids entertainment Yrs 7 -12, 7.30pm, Playgroup, 10am Umina Uniting Church.

Bingo 11.30am, UCH Enq:4343 1664

Lollipop Music Playgroup BFC 9.15am. Enq: 43 431929.

Old Wags Bridge Club, WH (except 4th Fri) 1:30pm, enq: 4360 1820.

Aqua-fitness, Woy Woy Hospital Hydro Pool, 1:30 & 2.30pm, enq: 4325 1869

Active Over 50's Exercise Class EPH 9.15am, enq: 4342 9252

Watercolour Painting 10am, EBACC

Painting 9am, Computers 1pm, Scrabble 1pm ESCC

Gym Sessions 8am, Gym Circuit 9am Circuit Boxing (Women) 9am, Boxing/fitness training 4pm (Junior) 5pm (Senior) PCYC Peninsula Pastimes Ettalong Baptist Church, Barrenjoey Rd. 9.30am, (Ex sch hols), Primary Kids Club 4.30pm, enq:4343

1237

Alcoholics Anonymous 6pm, St John the Baptist Hall, Blackwall Rd, Woy Woy, enq: 4342 7303. Hardys Bay Community Church, indoor bowls, canasta, scrabble, morning tea 10am, enq 4363 1968.

Occasional Care, 9am; Kindy Gym 0-3s 9.15am, 3-5s 10.20am; Weight Watchers, 9.30am; Smart Recovery, 10am; Samaritans Support Group, 10.30am; Bridge Club, 12pm; The Web, from 2pm; Brophy Circus Academy, 5pm; Kempo Karate, 5.30pm; Judo, 7pm; U3A Courses, PCC Women's walking group, 9am - 11am PWHC Fishing Club. EBWM

Krait RSL Day Club - 10:30am, Kooinda Village - 4341-8151 Fairhaven Services Cash Housie, East Gosford Progress Hall 7.30pm

Old Bags Bridge Club WH (except 4th Friday of month) 1:30 pm Enq: 4360 1820

Friendship for Seniors Hardys Bay Community Church 10am - 12pm Enq: 4360 1598

SATURDAY

First Saturday of every month

The National Malaya & Borneo Veterans Assoc. Meet, EBWMC, 2pm Enq: 4340 4160

Second Saturday of every month

Bookclub 10:30am enq: Mandy 4342 2482

Alliance Française french conversation, Impact Cafe Empire Bay 11am - 1pm Enq: 0412252709

Melaleuca Wetland Regeneration Group, Boronia Ave, Woy Woy, 8am.

Pretty Beach Bushcare group, Pretty Beach end Araluen Track, 8am.

Save our Suburbs, 1pm, enq 4342 2251 WWPH

Ex-Navalmen's Assoc, Central Coast Sub-Section, WWLC 10am.

Scrapbooking 12pm, PCC. enq 4342 3712

Third Saturday of every month

Umina P&C Bushcare 9am, Umina Campus of BWSC, Veron Rd Umina. enq: 4341 9301

Market Day, 9am Sydney 2000 Park, UCH.

Peninsula Residents Association, 2pm, Peninsula Community Centre, Cnr Ocean Beach Road and MacMasters Road.

Fourth Saturday of every month

Troubadour Acoustic Music Club, 7pm CWA Enq: 4341 406

Last Saturday every month Wagstaffe Bushcare group, Half Tide Rocks sign, 8am.

Melaleuca Wetland Regeneration Group, Boronia Ave, Woy Woy, 8am

Every Saturday

Vision Impaired Woy Walkers Fisherman's Wharf Woy Woy 7.15am Enq: 4325 3686

Chess Club EBWMC 1pm enq: 4341 8748

Weight Watchers, 8.30am; Dance & Theatre School, Bridge Club, 12pm; Gambling Anon, 2pm; The Web Drop In Centre, 4.30-9.30pm, PCC

Cash Housie St Mary's Hall,

What's On in and around the Peninsula

Discovery 9am PCYC.
Brisbane Water Bridge Club, 12.30pm, Enq: 4341 0721, **WWLC Al-anon/Alateen** family support group Community Health building, Woy Woy Hospital 2pm Enq: 4344 6939.

Woy Woy Environment Centre 10am. WWEC Enq 4342 6589.

Car Boot Sale, Ettalong Markets. Community Dance, 1pm to 4pm, \$2, ESCC, Enq: 4344 3131 / 4341 3222

Social Dance, New vogue, old time, \$3 (inc. afternoon tea), 1pm, ESCC, enq: 4344 3131.

SUNDAY

First Sunday of every month

Blackwall Mountain **Bushcare,** 9am cnr Blackwall Rd & Memorial Ave Enq: 4342 6995

Second Sunday of every month

Ladies Auxilliary of Vietnam Vets, 10 am, **Vietnam Vets,** 11am; **EBWMC**

Umina P&C **Bushcare** 9am BWSC, Enq: 4341 9301

Third Sunday of every month

Bushcare Group, Tennis Courts, Empire Bay, 9am Enq: 43692486
Ettymalong Creek Landcare, Ettalong Rd, Umina, 8am, enq: 4342 2251.

EBWM Fishing Club competition at Club House in Beach St, Ettalong.

Last Sunday of every month

Alliance Française "La Petanque" (the game of boules) 11am - 5pm Enq: 0415309074

Lions Club Boot Sale & Mini Market, Rogers Park Woy Woy Enq: 4341 4151

Every Sunday

Fijian Cultural Group, 11am-4pm, **PCC**

Coast Community **Church Services** 9am & 5pm Enq 4360 1448

Al-anon/Alateen family support group "The Cottage" Vidler Ave Woy Woy 7pm.

Patonga Bakehouse Gallery 11am Enq: 4379 1102

MONDAY

First Monday of every month

RSL Womens' Aux 9:30am **EBWMC**

Endeavour View Club Luncheon **ECC** Contact 4342 1722

Pretty Beach P S **P&C,** Resource Centre 7:30pm, ph 4360 1587.

Grandparents Parenting Support Group, Web Riley Room Catholic Church Woy Woy 4342 9995

Country Women's Association meeting, 10am, CWA Hall, Sydney Ave, Umina, enq: 4341 5627.

Second Monday of every month

Bookclub 7pm enq: Mandy 4342 2482

Save the Children St Andrews Church Hall, Ocean Beach Rd Umina 1-30pm Enq 4324 4389

Women 50+ Group Chat, **PWHC** **RSL Women's Auxiliary,** 9am; **RSL Sub Branch,** 2.30pm; **Card**

Club, 1pm, **EBWMC** **Pretty Beach to Killcare Community Association** WH 7:30pm, Enq: 4360 1546

Killcare Heights Garden Club, 10:30am, Enq: 4344 4520
Coastal Crones (over 50's), **PWHC**

Third Monday of every month

War Widows, 11am, **EBWMC** Enq: 4344 3486

Fourth Monday of every month

Toastmasters **Speechcraft** **Classes** 6pm **EBWMC**

Labor Party Peninsula Day Branch, **CWA,** 1pm.

Carers support group, Group room, Health Service Building, Woy Woy Hospital, Enq: 4344 8427.

Last Monday of every Month

WWLT Playreading, Woy Woy P.S. 7.30pm , Enq: 4341 2931

Every Monday

Cash Housie EMBC 7:30pm Enq: 4323 3566

Walking with other Mums Enq: Liz Poole 4320 3741

3Cs-Craft, Coffee & Conversation, 12.30pm **BFC.** Enq: 43 431929

Yoga WH 9.30am Enq: 4360 1854.

Computers, 1pm, **Dancing** 9am; **Indoor Bowls**-9am; **Mahjong** 1pm; **Fitness** 1pm; **Yoga** for beginners 2.30pm; **ESCC.**

Gym Sessions 8am, **Tiny Tots** 9:15am, **Circuit Boxing** (Women) 9.00am, **Boxing/fitness training,** 4.00pm (Junior) , 5pm (Senior) **PCYC**

Carpet Bowls 9am, **Card Club** 1pm, **EBWMC** **Fairhaven Cash Housie** 7.30pm & **Bingo** 11am **EMBC** enq: **4323 3566**

Arts and Crafts for people with a disability 11am, Enq. 4341 9333

Patchwork & Quilting, 10am, **Pottery** 10am & 1pm **EBACC** **Children's Story Time,** Woy Woy Library. 10.30 am

Occasional Childcare, 9am; **Volunteering,** 9am; **Gentle Fitness,** 9am; **Supported Playgroup,** 9.30am & 12.30pm;

Yoga, 10am; **Second Chance** **Craft,** 11am; **Bridge Club,** 12pm; **Physical Culture Club,** 3.45pm; **Coast Care Counselling,** 4pm; **Dance & Theatre School,** 3.45pm; **Judo,** 5pm; **U3A Courses,** **PCC**

Craft group, 1pm **BFC** **Fairhaven Services** **Cash Housie,** Ettalong Bowling Club 7.30pm **Yoga** WH 9:30 am Enq: 4360 2705

Pilates WH (except 2nd Monday of month) 6-7pm & 7-8pm

Tai Chi Empire Bay Progress Hall 9:30am Enq: Clare 4369 1075

Upcoming Events

April 5 - Art Exhibition, Gnostic Mana Cafe, Woy Woy.

April 6 - Seniors Week, 50th Anniversary

April 11 - Seniors week concerts, 10 am morning concert, 1pm afternoon concert, **EBWMC**

April 13 - Awaken to Love, 6 week course, **PWHC,** 4342 5905 for details.

April 21 - Rotary Club Woy Woy Annual golf day,

April 26 - Umina Beach **PCYC** Trivia Night/Auction

If you would like your community not-for-profit event listed here, send the details to the Peninsula News

Artist exhibits in botanic gardens

Pearl Beach artist, **Marijke Greenway,** will present an exhibition in the Palm House, the Sydney Royal Botanic Gardens, from Sunday, March 30, to Thursday, April 10, 10am to 4pm.

She has been working on the theme for this exhibition "For Love of Trees" for a period of two years.

Ms Greenway said she hoped that her intense connection with nature was reflected in the exhibition and that it would be enjoyed by many people.

"We are so fortunate to be surrounded by the incredible variety of beautiful old trees here on the Central Coast - in particular the angophoras, the banksias and grass trees," Ms Greenway said.

"We are surrounded by National Parks that are treasure houses filled with trees that are, to my mind, living sculptures, and this has been and probably always will be - my fountain of inspiration.



Marijke Greenway will present an exhibition at the Botanic Gardens

"I recently commissioned my own website, giving an extensive overview of my work, which is divided into five areas of different themes, with great photos of my art work."

The website is found at www.marijkegreenway.com.

Press release, 12 Mar 2008
 Marijke Greenway

Del's Let's do Lunch
Breakfast Specialists
'DEL'icious Lunches



Restaurant Quality
 7 Days - 7:30 am

The Rocks Arcade - 4341 1434
 7A/216 Memorial Ave, Ettalong Beach

The **Sporties** at Woy Woy

North Burge Rd, Woy Woy
 4341 7598

Introducing - Joanne and Ping
Garden Court Restaurant
 Open Lunch and Dinner - Tuesday to Sunday
 Large menu range of Asian and Western Meals

Offering- 10% discount on member's meals
 \$6.00 lunches (Asian and western options) Tuesday - Friday

Trading hours:
Open: Lunch 12pm - 2pm Tuesday- Sunday ~ Dinner 5:30-8:30 Tuesday - Thursday
Fri & Sat Night 5.30-9.00 pm ~ Sunday Night 5.30-8.30pm

What's happening?

HAPPY HOUR.. Everyday 9am-12pm \$2.90 schooners \$2.50 middles!!	Fridays Madness- Happy hour 5pm to 7pm.. Schooners \$2.50, Middles \$2.00
Tuesdays Lingerie Waitress and Pool comp starts 5pm	Saturdays Saturday Morning Raffle tickets on sale Fishe's raffle from 7pm
Thursdays Surf and turf Raffle Tickets on sale: 5pm Plus Members' Badge Draw...followed by karaoke!! & Darts	Sundays Childflight (every third Sunday of the month) Free poker from 1pm

Membership - now only \$2.50

Marine paintings in Patonga

An exhibition of marine paintings in watercolours and pastels will be held in the "Across the Road" gallery, opposite the Patonga Bakehouse Gallery, during April.

The works are by Warwick Webb of Marmong Point on the western shore of Lake Macquarie.

Warwick favours painting in watercolours and is also a pastelist.

He paints in a realistic style and was invited to become an exhibiting member of the Australian

Watercolour Institute in 1984 and subsequently became a foundation member of the Australian Society of Marine Artists.

He believes that the 20th century provided marine artists with a period of incomparable variety and interest concerning shipping, commencing with the twilight of the era of sail, the great ocean liners and the development of today's cruise ships and cargo carriers."

"Spending a large slice of my life growing up in the harbourside suburb of Mosman, virtually surrounded by Sydney Harbour and its maritime activity, I was provided with a wonderful base for the development of my interests," Mr Webb said.

"My passion is to breathe life into historical subjects, to enjoy the challenges found in painting contemporary shipping and to explore and record the many delightful vistas and cameos found in a harbour's small fry and associated paraphernalia."

Press release, 18 Mar 2008
 Jocelyn Maughan, Patonga Bakehouse Gallery



Peter Mace receives his trophy from judge Laurie McDonald

Peter wins national poetry prize

Empire Bay resident Mr Peter Mace has been awarded the Reciter of the Year trophy at the National Folk Festival in Canberra on March 24.

Mr Mace recited the Monty Grover poem "I Killed a Man at Graspan" about a young soldier's reflections on killing another human being during the Boer War.

He joined more than 100 poets from around the country over the Easter long weekend to recite personal and traditional poetry.

"What drew me to recite this particular poem was that it captured the emotional aftermath of war and

violence so well," Mr Mace said.

"I have been reading and writing poetry for about four years now and enjoy the way it touches a chord with me personally."

Mr Mace has been retired for almost two years and said he is enjoying the time off to write and read more poems.

"I enjoy the relaxed lifestyle this area has to offer," Mr Mace said.

"I feel very lucky to be living in this part of the world."

Mr Mace has been living in the Peninsula area with his wife for more than 30 years.

"I am always working on new poems," Mr Mace said.

"I have always got a few things up my sleeve."

Mr Mace received first prize at the Dunnedoo Bush Poetry Competition on March 1.

He has also received numerous awards over the past four years in Tamworth and Brisbane for his poems.

"For anyone who is interested in bush poetry, the Gosford Bush Poets meet at the Hotel Gosford at 7pm on the last Wednesday of the month," Mr Mace said.

Clare Graham, 28 March 2008
 Interviewee: Peter Mace

DRUMBALA

**Djembe Drum Tuition
 CWA Hall, Woy Woy**

• Ladies beginner drumming Fridays
 10am - 11.30am

• KIDS DRUMMING BIRTHDAY PARTIES

Katy 43421112 or 0423 548 540
 Email: drumbala1@yahoo.com.au



BRASSERIE / CAFÉ

OPEN 7 DAYS

FRESH NEW AUTUMN MENU

Wonderful to enjoy BBQ "Under our New Canopy" on Terrace. Or choose from the great selection of dishes from the Brasserie and relax, enjoy the view from the Terrace

Specialty Evenings

Sunday - Carvery \$12 **

Monday - Steak \$12 **

Wednesday - Schnitzel \$9.50 **

Friday - Reef'n'Beef \$24.50

** Special Family Price available

Saturday - evening BBQ

Sunday - lunch BBQ

Breakfast open from 7.30am.

a-la-carte or weekend buffet

Coffee Shop: Open

Daily : 7.30am to 9.30pm

Lunch open from 12.00 midday

Express Specials \$8.00*

Dinner from 5.30pm

TEXAS HOLD 'EM POKER



Saturdays

7.30pm - till late

Sunday 6.30pm

Mondays from 6.30pm

Tables available all week long for practice games

THURSDAY NIGHT CHICAS Lounge

Trivia from 7pm - 9pm
 With the "Professor" Graham Lewis
 Karaoke from 9pm - 12am
 Cash prizes

The Summer of Entertainment

All Free

LIVE MUSIC IS BACK IN A BIG WAY

IN RILEYS LOUNGE

The largest bar on the Peninsula with the biggest entertainment venue

Saturday 5th April

"Real Thing U2"

Saturday 12th

"Hyjinx"

Every Sunday from 1pm
 Jazz/Chill out music
 on the ocean front terrace

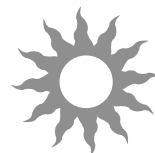
Sunday 6th April

"Andrew Godbold Quartet"

Sunday 13th April

"Peter Kinch Trio"

ETTALONG



B E A C H C L U B

Ettalong Beach War

Memorial Club

51 - 52 The Esplanade

Ettalong Beach NSW 2257

Telephone (02) 4343 0111

Fax (02) 4342 3639

www.ettalongbeachclub.com.au

*Members' prices - Non- members add 10% so why not join now for only \$5

Details correct at time of printing

**CONVERT
YOUR HOME
MOVIES, VHS
& 8mm TAPES
TO DVD**

From \$35.00

- ◆ **Editing**
 - ◆ **DVD menus & titles**
 - ◆ **Special Effects**
 - ◆ **Music**
- Can be added for an extra cost**



**CONVERT
YOUR LP'S &
CASSETTES
TO CD**

**Prices start from
\$15 per record.
Cassette prices may vary.**

**Make your own
compilation CD
from \$25**

**Phone Lee on
4340 0530**

Early start for Best Start

Pretty Beach Public School has been one of the first schools in the state to participate in the new Best Start Assessment Program for kindergarten students.

The local school was one of 400 schools across NSW to take up the two week program.

School principal Ms Vicki Redrup said the program was introduced to assess early literacy and numeracy skills.

"The literacy assessments are designed to identify whether students can recognise a familiar print, recall details about a picture story book that has been read to them, write their name, understand

how books work and recognise and use sounds and letters," Ms Redrup said.

"The numeracy assessment helps identify how well students can count, which numbers they can recognise, whether they can add and subtract small numbers of objects and whether they can recognise simple repeating patterns.

"Best Start is a great teaching tool to help find out each child's skills as they enter our school and to tailor teaching to support individual literacy and numeracy learning needs."

**Newsletter, 6 March 2008
Vicki Redrup, Pretty Beach Public School**



Crazy hair day raised more than \$660 for the Cancer Awareness Campaign

Crazy hair day raises \$660

Ettalong Public School raised more than \$660 for the Peninsula Relay for Life on March 14.

The school held a Crazy Hair Day and sponsored headshave in order to raise money for the cancer awareness campaign.

Ettalong Public School publicity officer Ms Michelle Pathirana congratulated all students and teachers involved in "this very special cause".

"Students gave a gold coin donation and came with a range of wild and imaginative hairstyles on the day," Ms Pathirana said.

"Three teachers volunteered to have their head shaved in front of an audience while two other staff members and a parent had their hair coloured purple.

"Students were able to sponsor these volunteers and had lots of fun watching the changes."

**Press release, 17 March 2008
Michelle Pathirana, Ettalong Public School**

Students answer 21,875 questions

Students from Pretty Beach Public School took part in World Maths Day on March 5.

Students from Years 3 to 6 helped set a world record in answering mental arithmetic questions using the live mathematics game engine on the internet.

"There were more than 20,000 schools from 150 countries around the world participating in the event," school principal Ms Vicki Redrup said.

"We had 84 students registered

and answered 21,875 questions correctly.

"Year 6 won a free subscription to Mathletics (worth \$900) until the end of the school year for their outstanding performance on the day.

"It was great for our children to be a part of this international challenge."

Students from around the world managed to set a new world record with 182,455,169 correct answers.

**Newsletter, 6 March 2008
Vicki Redrup, Pretty Beach Public School**

★ WHAT'S ON ★ PENINSULA THEATRE Cnr McMasters & Ocean Beach Rds WOY WOY

DEVISING THEATRE presents
**THE IT GIRL and
PANOPTICON**
29 and 30 March

Two new works that explore the contemporary phenomena of celebrity culture. THE IT GIRL explores the significance of google identities, PANOPTICON deconstructs celebrity culture and asks what impact it has on our understanding of ourselves?

The CULTURAL LABORATORY
Returning on 9th May
Tickets on sale now.
Still only \$10!

It's a safe space so bring your friends, your ideas & an open mind. Includes a mixture of local performers, story-telling, visual arts, film, music and drama, plus the Open Forum & Supper.

SHORTER + SWEETER
23rd & 24th May

Shorter + Sweeter is a tasting box of some of the best new 10 minute plays from the highly successful Short + Sweet Festivals held in Sydney and Melbourne over the past five years. These shows feature the best of over 3,000 entries.

GOSFORD CITY COUNCIL presents
SHORT + SWEET

Bite-sized theatre with attitude returns in July 2008. Start working on your 10 minute plays - the deadline for submission of scripts is 16 May 2008. The best 10 will be performed at the Peninsula Theatre in July.

More information
www.laycockstreet.com/sns2008.html

BOX OFFICE 43 233 233

Sponsored by
Peninsula News
Community Access

Peninsula Theatre - Cnr McMasters & Ocean Beach Rds, Woy Woy is proudly owned & operated by Gosford City Council

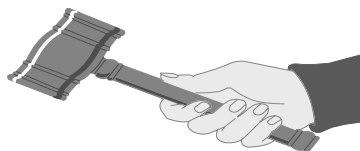


Umina Beach PCYC Trivia Night/Auction Fundraiser for new PCYC Bus

Saturday 26th April 2008 at 7pm

\$80 per table (8 persons per table)

Ettalong Beach Memorial Bowling Club
103 Springwood Avenue, Ettalong



Sponsored by

Peninsula News
Community Access

Buy your tickets

@ Umina Beach PCYC, 101 Osborne Ave, Umina Beach,

By phone (02) 4344 7851 OR

@ Ettalong Beach Memorial Bowling Club, 103 Springwood Avenue, Ettalong

Classifieds

Incorporating a trades directory and public notice advertisements.

Peninsula News Classifieds aim to help community groups and businesses reach the Peninsula community at the lowest possible price.

ADVERTISEMENTS cost only \$25 plus GST for 5 cms, and will be working for you in your local community for **TWO WEEKS**

Phone: 4325 7369
Fax: 4325 7362

E-mail: mail@peninsulanews.asn.au

Accommodation

Renovating this year?
Need short term accommodation?
Woy Woy short stay, near water
Large 3b/r apartment
Well behaved pet, kids and adults welcome
4341 1744

Antennas

A Better Picture
Antenna & Digital Installations & Tuning
New home specialist
Credit cards OK
HAYWARD VIDEO
All areas
Gosford 4323 6367
Woy Woy 4344 4414
Warnervale 1800 244 456
0412 685 555

Building Services

NELSON'S MAINTENANCE SERVICES
• Pipe and Cable Location
• Underground Boring
• Pipe and Conduit Trenching
• Jackhammer Excavation
• Concrete Cutting
Obligation free quote
Call Tony
0402 551 067

Electrical Appliances

Repairs and Service to vacuum cleaners, washing machines & fridges - Large range of vacuum cleaner bags.
JAYARS APPLIANCE SERVICE
 
13-15 Mutu St - Woy Woy
4342 3538 or 4344 3384
Approved Service Centre for over 15 Companies

For Sale

Spanline Patios, Glass and Screen Rooms, Carports & Wall Cladding as seen on TV
Lic. 83737c
PICTON BROS SPAN LINE
Gosford 4324 9300
Charmhaven 4393 3397

'91 Toyota Soarer GT Limited - Luxury
\$7,500



White Pearl Paint, Leather, Automatic, Auto Lights, Cruise Control, Climate Control, Electric Seats, Power Everything, Touchscreen Head Unit, Great Sound System.

20" Chrome Wheels & New Tyres
Just spent \$\$\$\$'s
Just changed Water Pump, Cam Belt, Bearings etc etc.
Must Sell!! - New car arrived
Call Justin 0412 894 082

'95 Daewoo 1.5L
\$2,300



5 Speed Manual, Air Conditioning, Power Steering, CD Player, Roof Racks, Spacious Boot, Cheap to Run, Great Condition, Rego Expires 28/05/2008, Located at Terrigal
Must Sell! Travelling Overseas
Call Kane:
0415 612 363

COFFS HARBOUR For Sale

Modern 2 BR Villa Built 2003
Over 55s Open plan.
SLUG (remote), HUGE pool
Gas BBQ, Rev Air, Security Gate, Close to three big bowls clubs and shops. For sale by owner, no agents therefore you save commission not added on to price only \$305,000 on a rising market.
Call owner on (02) 6652 7942

Lawns & Gardens

 **Green Frog**
Lawns & Garden Care
• Lawn mowing • Gardening
• Gutter clearing •
• Garden Minding •
Anything else? Just ask!
• Free quotes • Pensioner discounts • Friendly affordable service by a Peninsula local
Ph: Ryan 0415 350 453
grnfrog@optusnet.com.au

Jamie's Lawn Mowing

Pensioner Discounts Match or Better any reasonable quote
Professional Work
Gutter Cleaning and other odd jobs
0488 268 166

Mobile Mechanic

D.T. Central Coast Mobile Mechanic


*All mechanical repairs & servicing
*Rego inspections - All makes & models
*Very reasonable rates
*Pensioner discounts
Tim Howell Lic.No. 44 033038
4341 2897 or 0418 603 667

Plumbers

PRIDE PLUMBING
• All Plumbing & Drainage
• Hot Water Repairs & Replacements
• Gas Fitting & LPG
• Bathroom & Kitchen Renovations
• Blocked Drains/Electric Eel Service
• Guttering & Downpipes
• Water Tank Specialist
• Backflow & TMV Specialist

0409 180 596

Positions Vacant

 **Peninsula Community Centre Inc.**
Rag'd charity no. CC19624
Casual Child Care Worker/s
- Before & After School Care, multiple sites.
The Peninsula Community Centre's Childcare Services requires casual child care workers in its Before & After School Care sites. Applicants can download the job description from PCC website: www.pccinc.com.au. Conditions of employment & the application process are contained in the job description.

Public Notices

Central Coast Bush Dance & Music Association
Experience Folk Music at its best
Top Bands - loads of fun with

Snake Gully

at East Gosford Progress Hall @ 7.30pm Henry Parry Drive

April 12

Enq: 4342 5333
Admission \$15 incl. supper
Folk Fed Affiliates & Pensioners \$12,
Children 12 to 18 \$8
www.ccbdma.org for more information

Australian Red Cross

VOLUNTEERS NEEDED
Join the Hands On Team and with only a couple hours a week or fortnight, you can provide companionship to frail aged people on the Coast, through personal touch and emotional support while making new friends.

Call Vicki Langley on 4324 3411 for information.
www.redcross.org.au

The Troubadour Acoustic Music Club

proudly presents
Buck & Dianne
for one day only at the CWA Hall Woy Woy
April 26, 7pm
Tickets \$10
Concession \$8
Members \$7
Tickets available at the door. see www.troubadour.org.au

4341 4060

Public Notices

Woy Woy Peninsula Lions Club
Sunday, 27 April 8am to 1pm
Great variety of stalls ~ BBQ, Tea & Coffee. Vendors Welcome ~ \$10 per car
Cnr. Ocean Beach Road and Erina St. Woy Woy
Always Last Sunday (Except December)
More Details...
Elmo 4341 4151 - Hope 4369 8707

My healing from breast cancer by Dr Barbara Joseph MD obstetrician & Gynaecologist. Audio tape of the interview about this book: a must listen \$10 to order
ph 1300 669 664 or Email sales@magichealing.com plus many other CD'S DVD'S audio tapes on other cancers

Pumps and Bores

Bore water pump & spear point installation, maintenance, repairs & modifications.
PVC pipe & spear points installed that **never need cleaning.**
Ph John Woolley Lic. No. DL1664
Phone: 4342 2024

Bores and Spears

Install high quality pumps and maintenance free spears, existing systems reconditioned, all work guaranteed.
Ph: Warren Greenway
Ph: 4341 7736 Mob: 0408 225 390
Lic No. DL1960

Pure Value

Advertise now in this space for only \$25 + GST. At such a low price, how can you resist?
Call 4325 7369

Removals

A MAN WITH A VAN
From \$45 per hour
New 6.5 tonne Pantec with tailgate lifter
\$65 per hour
2nd or 3rd man available
www.amanwithavan.com.au
0413 048 091

Tiling

Tiling Plus
To suit your taste, lifestyle and budget. Wall & floor tiling plus landscaping, painting, household repairs & property maintenance
Competitive rates
Pensioner discounts
0439 589 426

Tuition

Violin, Keyboard, Piano, Mandolin, Drum and Guitar lessons available
All Ages welcome.
Gain confidence and achieve results
Frank Russell
4342 9099 or 0417 456 929

Peninsula News

Community Access

is printed on 100% recycled paper products, even the ink is made from vegetable matter. So when you're done reading this paper please recycle it or give it to someone else to read

www.cashreward.com.au

Ca\$hReward.com.au

The Ultimate Lost & Found Website

Earn Cash
Find Lost Items in the Local Area

For a small fee per month post your lost item online. Offer a financial incentive, of a cash reward, it will add motivation for information and possible return of the treasures you adore so much.

CHECK IT OUT TODAY

www.cashreward.com.au

Local tender for new surf club

A local company has secured the tender to construct the Killcare Surf Lifesaving Club building.

Mitchell Bros Building & Electrical Contractors' tender was chosen, according to a Gosford Council staff report, as it presented the most positive benefits, having ranked highly against all the stated criteria.

Facilities in the new surf lifesaving club will include boat and surf craft storage areas, kitchens, cafes, amenities, function rooms, storerooms, passenger lifts, external decks and ancillary areas.

Energy efficient design principles that will be incorporated into the buildings include rainwater tanks to supply water for flushing toilets and washing equipment, grey water recycling, four-star

rating water saving devices, low energy lights and solar hot water with gas back up.

Work is scheduled to commence next month.

The Avoca-based company has previously successfully constructed a number of council buildings including the Kincumber Youth Centre and the Avoca Surf Club.

Tenders for the construction work closed on February 26 with six tenders received.

The cost of the project is \$5,070,000, with total funds of \$5,319,586 available to council.

This includes \$5 million from a loan fund, a Surf Club Facility development grant of \$200,000 and a contribution to additional club area by Killcare Surf Life Saving Club of \$119,586.

Council agenda COR.19,
25 Mar 2008



Indigenous surf contest

Umina Beach hosted the Deadly Young Indigenous program's annual surfing contest on March 15.

The competition was the highlight for the Deadly Young Indigenous program which taught surfing to young Central Coast Aboriginal and Torres Strait Islanders.

According to MINGALETTA'S Aboriginal community development officer Ms Kylie Cassidy, the aim of the program was to promote a healthy lifestyle and provide young Aboriginal and Torres Strait Islanders a fun and safe way to learn to surf.

"The Deadly Young Indigenous program has become an important family event providing holistic promotion of healthy lifestyles, water safety and education," Ms Cassidy said.

"The contest offers Central Coast Aboriginal and Torres Strait Islander teenagers the opportunity to participate in a wonderful sporting event, while at the same

time forming lasting friendships.

"It also encourages them to take advantage of our beautiful coastal environment by engaging in surfing, and therefore fosters a sense of achievement, self-esteem and pride."

Press Release, 12 March 2008
Kate Carragher, Gosford Council



Ocean Beach hosts boat rowing

Ocean Beach Surf Life Saving Club hosted the final round of the NSW Boat Rowing Series on Sunday, March 16.

The event saw some of "the best NSW and local boat rowing

talent in competition", according to Surf Life Saving Central Coast CEO Mr Chad Griffith.

The series has been conducted for the past 11 years, with rounds conducted in the Central Coast,

Hunter and Lower North Coast branches and 114 boat crews participating in the six-part series, according to Mr Griffith.

Press release, 12 March 2008
Chad Griffith, Surf Life Saving Central Coast

Umina Bait & Tackle

Large Range of BAIT
Excellent Range of TACKLE

Open 7 Days

LESLIE STREET, UMINA (02) 4341 1686

www.kipmcgrath.com

Kip McGrath

EDUCATION CENTRES

Give your child a brighter future

Professional Tuition, Kinder - Year 10

- Specialists in basic skills
- MATHS
- Improve school results
- ENGLISH
- Raise self-esteem
- READING
- Individual education programs
- SPELLING
- Qualified teachers

Student of the month

• HANNAH •

David Hosford UMINA 4344 5042

BROPHY

circus academy

Looking for something different and exciting?

Why not try aerial and tumbling classes run by specialist trainers?

Ideal for children and adults
A great way to keep fit
7 Years to Adults
Niagara Pk & Woy Woy

0438 627 325
www.brophyproductions.com.au

Pictorial



Peninsula Relay for Life



Judo players bring home medals

Eight members of Woy Woy Judo Club have competed in the state selection tournament in Sydney.

They won three gold medals and three silver medals for the club in the second selection round and four gold, two silver and two bronze in the third round.

Woy Woy Judo Club secretary Ms Lindy Simmons said the members had all worked hard to achieve the results.

The first part of the selection tournament took place on November 25 last year at the Judo NSW Challenge in Olympic Park Sports Hall.

The second selection was held on February 17.

"The boys Under-13s Dominic Daquin achieved a bronze medal, while teammate Cameron Campbell gained a silver medal in the less-than-30kg division," Ms Simmons said.

"Our only under-13 girl Caitlin Grosse scored a five-point throw to win gold.

"The 2007 national bronze medalist in the Under-13s Kieren Handley has this year gone up into the Under-16s boys and is proving to be quite comfortable in a higher weight division.

"Kieren won the gold in this selection tournament.

"Mat Cheesman's has put

himself in good contention by winning the silver medal in a repeat performance of the first selection.

"Kayla Wells in the under-63kg junior women's division took gold, then went up into the under-70kg and attained the silver medal."

The third and final selection tournament was held on March 9, at Bankstown Sports Youth Club due to the closure of Olympic park for the set up of the Royal Easter Show.

"All eight competitors had a minimum of two bouts with the exception of Jordan Smith in the Under-16 under-73kg division, who had four," Ms Simmons said.

"Jordan won all four bouts with all his opponents unable to get a point against him."

The final medal tally was four gold, two silver and two bronze.

All members who achieved a first, second or third place at the selections will attend a compulsory training camp on April 12 and 13, in Wollongong.

The qualifying member will then begin state squad training from April 21, over a seven-week period.

The Australian National Judo Titles will be held in Castle Hill on June 7 to 9.

**Press release, 20 March 2008
Lindy Simmons, Woy Woy Judo Club**

Ocean Beach Surf Life Saving Club has gained medals in all age groups from the under-9s through to the open division in the recent State Titles held at Swansea, according to marketing and public relations director Ms Liane Mandy.

"Being a small club, the medals were all the more sweet as the competitors were up against some massive numbers," Ms Mandy said.

"The junior club ranked 11th overall which is Ocean Beach's best ever performance."

Ms Mandy said star medal competitors in the junior section were Keelan Bridge, Matt Hurst, Laura McGlone, Elyssia Gasparotto, Ryan Moate, Gregory Bennett, Ashleigh Fitzpatrick, Wade Hannell, Blake Arahill, Alessandra Gasparotto, Jasmine Mandy and Sienna Inglis.

She said star medal competitors in the seniors section were Jess moyes, Ashleigh Swain, Lauren Swain, Natasha Swain, Katie Dixon, Richard Grimmond, Natalie Allan, Gabrielle Remy, Alison Tucker, Lizzie Elbra, Alison Pope-Moore, Bronwen Scott, Shelly Smith, Mark Davis, Nigel Fitzgibbon and Bryce Sainy.

Keelan Bridge, Matt Hurst, Elyssia Gasparotto, Ryan Moate and Gregory Bennett received gold in the Senior Cameron Relay.

Elyssia Gasparotto and Laura McGlone received gold in the Under-13 Female Board Rescue.

Wade Hannell and Blake Arahill received gold in the Under-12 Male Board Rescue.

Gold was presented to Elyssia Gasparotto in the Under-13 Female Surf, and to Alessandra Gasparotto in the Under-11 Female Surf.

Alessandra Gasparotto and Jasmine Many were given silver in the Under-11 Female Board Rescue.

Elyssia Gasparotto, Laura McGlone and Ashleigh Fitzpatrick received silver in the Under-13 Female Board Relay.

Silver was given to Sienna Inglis in the Under-9 Surf.

Silver was also awarded to Elyssia Gasparotto in the Under-

13 Female Ironperson and to Alessandra Gasparotto in the Under-11 Female Ironperson.



13 Female Ironperson and to Alessandra Gasparotto in the Under-11 Female Ironperson.

Bronze was awarded to Keelan Bridge, Matt Hurst, Ryan Moate and Gregory Bennett in the Under-14 Male Surf Teams.

It was also awarded to Matt Hurst in the Under-14 Male Ironman, Blake Arahill in the Under-12 Male Board and Jasmine Mandy in the Under-10 Female Board.

Gold was given to Jess Moyes, Ashleigh Swain, Lauren Swain and Natasha Swain, in the Under-17 Patrol Comp.

Natasha Swain was awarded gold in the Under-15 Champion Lifesaver, and Jessica Moyes in the Under-17.

Katie Dixon and Richard Grimmond received gold in the

First Aid Opens.

Natalie Allan and Gabrielle Remy received silver in the Under-15 First Aid.

Katie Dixon, Lizzie Elbra, Alison Pope-Moore, Bronwen Scott and Shelly Smith were awarded the bronze in the Open Women's Five Person Response and Recovery.

Mark Davis, Katie Dixon, Nij Fitzgibbon, Richard Grimmond, Bryce Sainy and Shelley Smith came fourth in the Patrol Comp.

Brooke Carr and Natasha Swain participated in the Under-15 First Aid.

In Masters, Alison Tucker gained silver in the Flags 30-39 Women.

**Press release, 26 Mar 2008
Liane Mandy, Ocean Beach Surf Life Saving Club**

Rotary holds golf day

The Rotary Club of Woy Woy will hold its annual golf day on Monday, April 21.

The event will be held at Everglades golf course, Dunban Rd, Woy Woy, starting at 11:30am.

Publicity officer Mr Ross Pearse said it would be an Ambrose tournament.

"The entry fee of \$30 includes the game of golf, a barbeque and two free drinks," Mr Pearse said.

"Alternatively for the cost of \$250 you can sponsor a hole.

"This allows the sponsor to display a banner at the hole and

will include two free entries to the competition.

"The club will award prizes for nearest the pin, longest drive and others.

"All proceeds from the day will do donated to child flight and other Rotary Charities.

"The organizer of the day, Trevor Walker, is asking all golfers to come along for a fun day and help a worthwhile charity."

For more information, telephone the pro shop on 4341 3399.

**Press release, 20 Mar 2008
Ross Pearse, Woy Woy Rotary**

Tiling Plus

To suit your taste, lifestyle and budget.

Wall & floor tiling plus landscaping, painting, household repairs & property maintenance

AUTUMN SPECIAL!!!

Free Grout with any tiling job*



Competitive rates - Pensioner discounts

0439 589 426

*Conditions Apply



Sponsored by
Peninsula News
Community Access

Join Greenpeace today
1800 815 151

ECHO Leaf Blowers from \$379

ECHO

PB2155

BLOWER VAC
 Dry Weight 4.0kg
 Engine Disp. 21.2cm³
 Fuel Tank 0.40L
 Max Air Volume 570m³/h
 Max Air Speed 53m/sec
 Engine Power¹ 0.75kW
 Sound Pressure² 101dBa
 Can be fitted with Optional Vacuum Attachment or Rain Gutter Kit.



PB2200S

BLOWER VAC
 Sound Pressure² 89.6dBa
 (same specs as above)

21.2cc



PB2455

BLOWER VAC
 Dry Weight 4.3kg
 Engine Disp. 23.6cm³
 Fuel Tank 0.50L
 Max Air Volume 660m³/h
 Max Air Speed 63m/sec
 Engine Power¹ 0.87kW
 Sound Pressure² 103dBa
 Can be fitted with Optional Vacuum Attachment



PB2455S

BLOWER VAC
 (same specs as above)

23.6cc



GT22G

LINE TRIMMER (PICTURED)
 Loop Handle
 Dry Weight 4.5kg
 Engine Disp. 21.2cm³
 Engine Power¹ 0.75kW
 Sound Pressure² 94.8dBa
 Length 1465mm
 Fuel Tank 0.44L
 2 line Nylon Head



21.2cc

GT22GES

LINE TRIMMER
 (same specs as above)



SRM22G Brushcutter only \$449 with \$20 cashback

SRM22G

BRUSHCUTTER (PICTURED)
 Loop Handle
 Dry Weight 4.8kg
 Engine Disp. 21.2cm³
 Engine Power¹ 0.75kW
 Sound Pressure² 94.2dBa
 Length 1785mm
 Fuel Tank 0.44L
 L2 Line Nylon Head
 Steel Blade Optional

21.2cc

SRM22GES

BRUSHCUTTER
 (same specs as above)



Clean up around your house and garden with an easy to start ECHO power blower in a fraction of the time and effort that it would take you by hand.

Leaf blowers with 5 year domestic warranty

When you purchase any ECHO product you receive a

FREE ECHO GIFT PACK!

which includes safety goggles, 100ml bottle of oil and tools

GT22G Line Trimmer only \$279

BLACKWALL MOWERS & CHAINSAWS

Ph: 4343 1624 or 4341 1671
 Fax: 4344 4181

NOT JUST A MOWER SHOP!!

72 Memorial Ave, WOY WOY
 NSW 2256

www.blackwallmowers.com

OPEN 7 DAYS

Monday ~ Friday -
 7am - 5pm

Saturday - 8am - 4pm

Sunday - 9am - 2pm



The proper hardware store

Phone: 4341 1411
 Fax: 4343 1355
 100% Locally owned
 100% Locally staffed
 182 Blackwall Road,
 (at the lights) Woy Woy

Campbell Building Materials
Paint your room
for Only *\$99

*Paint coverage based 2 coats for an average room size 3m x 4m x 2.4m.

50mm Home Sirdar Roller Kit \$4.95
 Expert Cutting Brush \$9.87

Package includes:



Home Interior Low Sheen or Satin Acrylic Wall Paint (White only)
 4 Litres - **\$44.50**



Home Ceiling White Interior Paint
 2 Litres - **\$19.84**



Home Interior Satin Enamel or Home Acrylic Gloss
 1 Litre - **\$19.84**

Do a proper premium paint job for only \$99



All Home premium quality products are manufactured by Watty and carry their Quality Guarantee.