

Committee was impartial, says Council

A Gosford Council Conduct Committee which oversaw a conflict of interest matter involving a Woy Woy resident was "impartial during the investigation", according to council's acting general manager Mr Nic Pasternatsky.

Woy Woy Bay resident Ms Margaret Lund had claimed that Cr Trevor Drake had breached council's code of conduct by being present in council chambers during discussions involving a business he had represented as a solicitor.

In a letter to Peninsula News, Mr Pasternatsky referred to the article "Conflict panel was 'conflicted', says resident" published in Peninsula News on Monday, December 10.

"The establishment of Gosford Council's conduct committee is prescribed under section 440 of the NSW Local Government Act 1993 and the model code of conduct for local councils in NSW,

with such committees to include the mayor, general manager and an independent representative," Mr Pasternatsky stated.

"The guidelines for conduct committee's recommend a legal representative be considered for the position of an independent member.

"The investigation was conducted in accordance with the prescribed legislation and I can assure you that all committee members were impartial during the investigation.

"A recommendation was made from the conduct committee to council who made the final decision on this matter."

Mr Pasternatsky said that the NSW State Government was considering changes to the model code of conduct and the establishment of Conduct Committees.

**Letter, 21 Dec 2007
Nic Pasternatsky,
Gosford Council**

Bridge will be officially named

An event will be held to officially name the Spike Milligan Bridge, according to council staff.

Cr Chris Holstein had asked on November 27 whether council had taken any action in placing appropriate signage on the Spike Milligan Bridge.

Cr Holstein asked if the family of Spike Milligan had been advised of the naming and if so, whether they had been invited to any event.

Council's director of city services Mr Stephen Glen said that there was currently no signage or plaques in place on the bridge, and no invitation had gone out to the Milligan family.

"Council officers are currently planning for an event to mark the occasion and will be liaising with the Milligan family during this planning phase," Mr Glen said.

**Council agenda COR.3
Q132, 8 Jan 2007**



The Ettalong Beach War Memorial Club beneath the Mantra Resort

Auditor warns on club's future

Ettalong Beach War Memorial Club auditor Mr David Bracey has warned of "a material uncertainty which may cast significant doubt about the company's ability to continue as a going concern".

He stated in the club's annual report that while the company's bankers had provided financial support to date, they "have not indicated that this support of the company will be continuing due to the company's inability to comply with the terms of the financing agreements".

He stated, however, that the bankers were currently supporting a restructure of the business which would be based upon a report that was being prepared by a firm of external consultants.

"The report and the restructure will then be considered by the bankers and the company," Mr Bracey stated.

"These conditions, along with the matters as set forth in Note 1, indicate the existence of a material uncertainty which may cast significant doubt about the company's ability to continue as

a going concern, and, therefore, whether the company will realise its assets and extinguish its liabilities in the normal course of business and the amounts stated in the financial report."

Mr Bracey also expressed concern about the valuation of the club's assets, some of which were based upon the company achieving certain levels of net operating profit before interest and depreciation, which were not achieved.

"The land and buildings whilst included in the financial report at a carrying value which is lower than the said valuation, would be significantly reduced if a revaluation was carried out by the company," Mr Bracey said.

"The company has since 30 June 2007 requested a new valuation to be carried out but it has not occurred up until the date of signing the financial report.

"Therefore we are unable to form an opinion as to whether the amount disclosed in the financial report is a fair and reasonable valuation of the Land, New Clubhouse, and Stage 3 Car Park and Plant and Equipment."

Outgoing club chairman Mr John

Houtman stated that the report identified that the Club needed to put in place "measures to ensure its future".

"The general manager will provide you with the facts and figures relative to the Club's operations in more detail at the annual general meeting," he said.

The annual meeting will be held at the club at 9am next Sunday, January 20.

General manager Cr Peter Hale, whose resignation will also be effective from the time of the annual meeting, echoed the comments, stating that the company "needed to put measures into place to correct its financial position".

Cr Hale cited the poker machine tax and non-smoking laws as reasons for a loss of \$802,310 this year, but said that a staff supported restructure and increased use of the club's conference and function facilities would "positively affect the going forward rate quite significantly".

**Annual report, 11 Jan 2007
Ettalong Beach Club**

Club will prosper - Page 3

THIS ISSUE contains 36 articles. Read more at www.PeninsulaNews.asn.au



EVERGLADES
COUNTRY CLUB WOY WOY



AUSTRALIA DAY CELEBRATIONS
Saturday 26th January, 12 noon to 6pm, Live Aussie Music, Raffles and Special Aussie Fare in the Bistro and Coffee Shop.



THE GREAT STEAK NIGHT
Every Thursday from 5pm in the Bistro, ONLY \$12.00



Cabaret Shows - 19th January
featured artist Roland Storm
Gala Day - 24th January
Feature Artist Mathew Loeser From 11.30am

Dunban Road, Woy Woy Phone 4341 1866 Conditions of entry and dress rules apply. COURTESY BUS Thursday to Sunday from 5pm

OCEAN BEACH RD

PHYSIOTHERAPY,

SPORTS INJURIES, SPINAL & REHABILITATION CENTRE

- Back, Neck & Knee Pain • Sports & Work Injuries • Joint & Muscle Pain •
- Exercise Programs • Wheelchair Access • Personalised Pilates • Rehabilitation •
- Massage • Home Visits • Weight Loss • Veterans Affairs • On-site Parking •

ALISTAIR CHOIE B.App.Sc. (Phy) MAPA - **STEVE ROW** B.App.Sc. (Phy) MAPA

433 Ocean Beach Rd, Umina 4342 0999 - 0417 231 066

BEFORE & AFTER HOURS AND WEEKEND APPOINTMENTS AVAILABLE

HIV/AIDS activist dies in New Delhi



Marjorie and Kathleen Kay in India during 2006

Peninsula News

Community Access

Peninsula News is owned by Peninsula Community Access Newspaper Inc., an incorporated, non-profit association. Its aims include providing a viable, non-partisan news medium and forum exclusively for the Peninsula and developing a sense of community on the Peninsula.

Association President and Editor: Mark Snell

Commercial operator: Cec Bucello for Ducks Crossing Publications

Journalists: Lyle Stone, Clare Graham

Graphic design: Justin Stanley

Contributors: Ben Deegan

Declaration of interests

Honorary editor: Mark Snell

*Owner and managing director, Open Windows Consulting Pty Ltd
Convenor, Burrawang Bushland Reserve Committee
President, Australian Conservation Foundation Central Coast branch
Chairman, Equilibrium Community Ecology Inc
President, Central Coast Bush Dance & Music Association
Vice-president, Brisbane Water Secondary College Umina Campus P&C*

Next Edition: Peninsula News 183

Deadline: January 23 Publication date: January 29

Contributions

Letters to the editor and other contributions are welcomed and should be addressed to: Peninsula News PO Box 532, Woy Woy 2256. Contributions should be in Word format sent via email to: mail@peninsulanews.asn.au, on disks or by handwritten letter if these facilities are not available to you. Contributions must include the date, your name, address and phone numbers. Name and Suburb will be published. Anonymous contributions will not be included. Submissions may be published in edited form. All accepted contributions also appear on our website.

CONTACT US AT:



Office: 2a Kateena Ave Tascott
Phone: 4325 7369 **Fax:** 4325 7362
Mail: PO Box 532, Woy Woy 2256
E-mail: mail@peninsulanews.asn.au
Website: www.duckscrossing.org
Website: www.peninsulanews.asn.au

Legal responsibility for editing, printing and publishing in Peninsula News is taken by Mark Snell of Woy Woy, for Peninsula Community Access Newspaper Inc.

Ducks Crossing Publications is the commercial operator of Peninsula News

Ducks Crossing Publications also publishes

• Coast Bowls News - www.ccdba.org.au email: bowlsnews@duckscrossing.org
• Trad&Now - www.tradandnow.com email: info@tradandnow.com

Printed by MPD, Maddox St, Alexandria

Former Woy Woy resident and international HIV/AIDS activist Ms Kathleen Kay, 48, passed away unexpectedly in her New Delhi home on December 10.

Her cause of death is still unknown.

Kathleen's mother Ms Marjorie Kay said she believes it was her upbringing on the Peninsula that made her into the inspiring and passionate woman she became.

"Each time she visited from overseas Kathleen would walk along the beach that she grew up loving," Marjorie said.

"She would recharge and take strength from being here."

Kathleen was born at Gosford in 1959 and grew up on the Peninsula, where she worked in the family's Ettalong Beach fish and chip shop.

She attended St John the Baptist Primary School, Woy Woy, St Joseph's High School, East Gosford, and then Woy Woy High School for Years 11 and 12.

One of her first jobs was in Year 9 at Ettalong TAB where she continued to work until the start of university.

Kathleen also worked at the Ettalong Beach War Memorial Club as a barmaid during university vacations.

Since that time Kathleen had been a nurse, medical writer,

journalist, political lobbyist, United Nations officer and Harvard University graduate.

Kathleen also worked as a special assistant to the World Health Organisation's global AIDS program director Mr Jonathan Mann.

In 1999, Kathleen led Australia's first bilateral HIV effort in Indonesia.

Kathleen later began work as country director for India, with Family Health International, where she worked until her death.

Her tireless work and campaigning led to the establishment of six offices in India that care for HIV-positive children and help educate sex workers and their clients.

In 2006, when US First Lady Laura Bush visited India, the State Department required Kathleen to manage all arrangements over a two-week period and then be the only staff representative to attend the visit.

In 1992, Kathleen was inducted into Woy Woy High School's Corridor of Achievement for her inspiring and successful career as an international AIDS activist.

She was in London at the time and unable to attend the ceremony back in Australia due to work commitments.

Kathleen prepared a speech that was read in her absence at the induction ceremony.

Kathleen's advice to students at the school was to "believe" in themselves.

"Seek and listen to advice then make your own decisions and take responsibility for them," Kathleen wrote.

"Be prepared to take risks to achieve your goal and be determined to make it happen.


"Don't accept labels from others or yourself and don't demean any other human being by giving them."

The same speech was read by Brisbane Water Collage Principal Mr Frank Gasper at last October's Year 12 graduation ceremony, and by Year 12 graduate Ms Rebecca Gaston at Kathleen's funeral at Greenway Memorial Gardens, Green Point, on December 21.

"Finally I would like to say that my roots are my core to my sense of self," Kathleen concluded in her speech.

"Wherever I am in the world and whatever I am doing, I gain strength from knowing who I am and where I come from."

Clare Graham, 11 Jan 2008
Interview: Marjorie Kay



Central Coast Community College

Small business owners & managers - grow your business, save time and money

Join this funded program and build your skills in business planning, e-commerce and IT strategies Invest a few hours of your time to discover how to save time & money, reach more customers, increase your revenue, and plan for your business. IT focus, access to mentors and consultants – interactive funded program. Register today for a free, no obligation kick-off seminar.

Wednesday 30 January 2008
Ourimbah (7:30am - 8:30am)
Woy Woy (6:30pm - 7:30pm)

Call 4348 4300 to reserve your place or email enrol@cccc.nsw.edu.au

The program is funded by AusIndustry, Department of Innovation, Industry, Science and Research under the Federal Government's Building Entrepreneurship in Small Business program.

Emergency Numbers

Police, Fire, Ambulance	000
Gosford Hospital	4320 2111
Woy Woy Hospital	4344 8444
Police Assistance Line	131 444
Woy Woy Police Station	4379 7399
Crime Stoppers	1800 333 000
RFS Fire Control Centre	4340 2911
SES	132 500
Gosford City Council	4325 8222
City Rail	131 500
Energy Australia	13 13 88
Poisons Information	131 126
Lifeline	13 11 14

Subscribe!

and enjoy the convenience of having Peninsula News mailed to your home

YES ! Please send:

☐ 12 fortnightly issues for \$20
OR
☐ 26 fortnightly issues for \$40

A subscription to Peninsula News now entitles subscribers to membership of Peninsula Community Access Newspaper Inc., an incorporated, not for profit, association. Please tick ☐ if you would like to accept membership

OR

☐ Please find enclosed \$5 for membership to the Peninsula Community Access Newspaper Inc

Name _____

Address _____

Please send a cheque, money order or credit card details with your order to:

Ducks Crossing Publications
PO Box 532,
Woy Woy 2256

Club 'will prosper', says Hale

Outgoing Ettalong Beach War Memorial Club general manager Cr Peter Hale said he believed "the club will prosper" from recent changes.

Cr Hale cited the poker machine tax and non-smoking laws as reasons for a loss of \$802,310 this year, but said that a staff-supported restructure and increased use of the club's conference and function facilities would "positively affect the going forward rate quite significantly".

"While food and beverage income has continued to grow, the increase in the rate of the NSW Government poker machine tax has eroded all those increases, and more," Cr Hale said.

"(Previously we) have explained that there are no allowable deductions for poker machine tax.

"This means the increase in the rate of poker machine tax over the last three years now sees the club paying an additional \$1,476,049 this year over and above what it would have been paying at the previous rate.

"In this year alone, there was an increase of \$434,320."

Cr Hale said this year's trading loss, \$8000 above last year, was due to the increase in taxation mentioned above, and failure of overall income to meet original projections and tax costs.

He also noted that, since the end of the financial year, the advent of the non-smoking legislation had a dramatic effect upon income from gaming.

"This has placed the club in a serious financial position but, with the continued support of its bankers; a detailed review of both the operations and assets of the club and the significant growth expected in conference and function income, the club, with

your continued support, should prosper," Cr Hale said.

"The company, as a result, and with the full support of staff, has carried out considerable restructure and this will positively affect the going forward results quite significantly.

"It is anticipated that by January 2008, annual savings in the vicinity of \$1.4 million will be achievable."

Details of the savings was to be outlined at the club's general meeting next Sunday, January 20.

"The change in operator of the resort hotel from Outrigger to Mantra has proved to be an extremely beneficial change," Cr Hale stated.

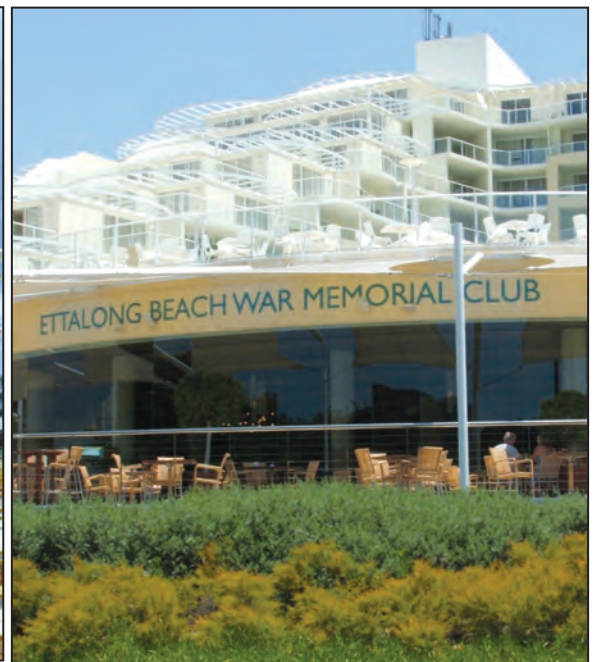
"Mantra is part of the Australian Stella Group, the largest Australian hotel chain.

"Conversion rates for conference inquiries at Ettalong have already grown from four per cent to 30 per cent (with the dollar value doubling in the first three months of their tenure) due to a more aggressive attitude to market competitiveness.

"As at November 20, the club had confirmed \$962,000 worth of forward bookings, in comparison with \$181,000 at the same time last year.

"It is because of this growth and the restructure being implemented that we believe the club will prosper."

**Annual report, 11 Jan 2007
Ettalong Beach Club**



Spot the difference

Peninsula community activist Mr Ed James has noticed a difference between the picture on the front page of the Ettalong Beach Club's

annual report (left) and the terrace of the club as it currently stands (right).

Can you spot the difference?
Mr James asked whether this

was a portent of things to come.

Email, 10 Jan 2008
Ed James, Umina

Club chairman steps down

Ettalong Beach War Memorial Club chairman Mr John Houtman has announced his retirement from the board after 20 years.

"After a long and tortuous deliberation I have decided not to seek re-election to the board of

directors," Mr Houtman said.

The announcement follows the resignation of club CEO Mr Peter Hale.

Mr Houtman has been an elected director of Ettalong Beach War Memorial Club since 1987 and chairman since 1988.

He was employed for many years as a chartered accountant with wide experience in auditing licensed clubs.

Mr Houtman retired from full-time employment in 1989.

**Annual report, 10 Jan 2008
Ettalong Beach Club**

SKIPPER'S
Take-away Seafood
Variety of fish & burgers,
chips & scallops cut fresh daily
Seafood Packs
Available from \$5!
Phone orders welcome
4341 0177
244 West Street Umina
Trading Hours
Sun-Thurs 9am - 8pm
Fri - Sat 9am - 9pm
Xmas Catering Available!

Del's for Dinner
*Casual al-fresco Sparkling
South Sea Island Cuisine*
Affordable Prices
BYO (no corkage)
The Rocks Arcade - 4341 1434
7A/216 Memorial Ave, Ettalong Beach

GRAWILL A1 USED CARS

Call Ray, your local man from the Peninsula for the best car deal.



- Best trade-in prices
- No deposit on finance T.A.P.
- We will come to you
- All Peninsula residents receive a full tank of fuel on delivery



DL 233

Car of the Month!

'06 BF Futura Falcon

Auto, Power Steer,
Air Con, Cruise, **LPG**
Fuel Saver!!!

\$23,990

AT - 11 - FC



2001 Barina

Manual, Air Con, Power Steer
Was **\$8,990** Now **\$6,990**
XCF - 718

2002 Focus CL

Manual, Air Con, Power Steer
Low KM Was **\$14,990**
Now **\$12,990**

AQ - 04 - YM



2004 BA Falcon

Auto, Air Con, Power Steer
\$13,990

AB - 04 - MU

ELCAS Refills Available

296 Manns Road, WEST GOSFORD Ph: 4321 1300

Historical information wanted on aquarium

Information is being sought about the Ocean Beach Aquarium, which once operated in Umina.

The information will be used for a new book about the cultural history of the Australian Reptile Park and its founder Eric Worrell.

The research is being undertaken by Associate Professor Kevin Markwell and Dr Nancy Cushing from the University of Newcastle.

The Aquarium, owned by the late Eric Worrell, operated in the late 1940s and early 1950s on the corner of West and Augusta Sts, Umina.

"The aquarium was a popular

tourist attraction on the Peninsula, both for holiday makers and day visitors from Sydney," said research assistant Dr Annona Pearse.

"Many Peninsula residents may have memories of visiting the aquarium or supplying Eric Worrell with funnel web spiders for his early work in the supply of venom."

Dr Pearse said that cultural histories combined many academic approaches, such as sociology and history, to examine particular historical experiences.

"Examinations of historical records and interviews are just two of many avenues of research that are undertaken," she said.

Details of the opening date of the Ocean Beach Aquarium

and any associated photographs and newspaper articles are being sought.

"I hope someone can give us details of an opening date," said Dr Pearse.

"It's surprising how such information can be so difficult to pin down."

Readers who may have been involved in working with reptiles at the Ocean Beach Aquarium are also encouraged to make contact.

Dr Pearse said that any information, photographs or memorabilia "may help in piecing together an important part of the history of the Peninsula".

She may be contacted on 4382 6514.

Press release, 10 Jan 2007
Annona Pearse,
University of Newcastle

Pearl Beach hall opened after renovations

The official opening of the newly-refurbished Pearl Beach Memorial Hall was held last Saturday, January 12.

The renovations were funded by a combination of Federal Government grant funds through the Regional Partnerships community assistance scheme and funds raised by the local community.

Chairman of the scheme on the Central Coast Mr Peter Hale presided over the event

"The idea for a hall at Pearl Beach goes back as far as 1929 when the Pearl Beach Progress Association was formed," said

association publicity officer Ms Lynne Lillico.

"Land on the current site was purchased by members of the community in 1943, and work eventually commenced on the new building in 1949, with completion and official opening being held on September 16, 1950."

Traditional bush band The Murrumbidgee Rattlers provided entertainment for the event, as was International and National "Town Crier" champion Mr Graham Keating attended.

Press release, 4 Jan 2007
Lynne Lillico,
Pearl Beach Progress Association

Do you need finance?

Is your mortgage the right loan for your circumstances?

Debt consolidation & other borrowing needs?

Equity release for Seniors, business needs or investment.

Whatever your requirements, making the right financial choices and how you manage them can cost or save you money.

For an obligation free & confidential consultation please call:

MARK HANSLOW
MFAA Accredited Mortgage Consultant

FinCare
Finance
Caring for your Future

Ph. 4360 2873

M. 0438 467 964

Cabin Fever? Discover Mt Penang Gardens!

www.mpp.nsw.gov.au



If you've got holidaying family or friends and need an inspiring place to visit, come see us!

Mt Penang Gardens is one of Australia's most stunning garden attractions, with 12 unique garden rooms to explore. With over 10,000 rare and unusual plants to see, there's a distraction

for every family member including the kids.

Bring a picnic and make a day of it or enjoy a light meal in our Waterfall Café – you'll have a great day either way.



Email: fdc@lands.nsw.gov.au

4340 1002



Term 1 2008—Enrolling now.
Classes held in **Woy Woy and Umina**
Classes start **4 February 2008.**

Diploma of Children's Services
Basic Bookkeeping
Investment Insights *New*
Creative Writing
Beading
Candlemaking with Soy Wax

French Level 1
German for Travel
Japanese Level 1
Japanese Level 2
Mandarin Level 1
Spanish Level 1

Creative Indian Dance *New*
Indian Head and Shoulder Massage
Thai Cooking *New*
Learn to Surf
Floral Art
Mosaics

For the love of learning

Many more courses on offer across the entire Central Coast



For the love of learning
Courses for fun,
courses for work,
courses for life...

Course Guide Term 1, 2008

Call for your **FREE** course guide
(02) 4388 4574

Visit us: www.tlcc.nsw.edu.au

Sponsored by

Peninsula
Community Access

News

Not pleased with fluoride

I am not pleased that Gosford Council is to introduce its mass medication policy.

Our mayor assures us that at 1.0 parts per million fluoride is "not harmful or toxic".

Surely this must depend on how much water one takes into the body.

Would Mr Macfadyen be willing to guarantee that it is absolutely safe for everyone?

In America parents are warned not to use fluoridated water when preparing formula for their babies.

Why is there no warning here?

The World Health Organisation states that dental caries are decreasing in both fluoridated and unfluoridated countries but dental fluorosis is increasing.

This is evident in Perth and in South Australia.

There is no treatment for dental fluorosis.

Skeletal fluorosis, a bone disease, has a high incidence in countries which have areas with a

Forum

high level of natural fluoride such as India, China and Africa.

There appears to be a higher incidence of hip fractures in countries which artificially fluoridate, because as we age we store more of the chemical in our bones.

Where is the evidence to prove that fluoride does not affect other internal organs such as kidneys, liver and even our brains?

Where is the research being conducted in this country?

We are all individuals with individual reactions to all medications but simply because it is difficult to educate people regarding their personal health, we are now all to be forcefully medicated with fluoride whether we like it or not.

Are we just lemmings?

Margaret Lund
Woy Woy Bay

More forum on page 9

Club's future in hands of bankers

The business world is littered with examples of grand ambition thwarted by reality.

It looks like Ettalong Beach Club will provide a further example.

The result for the year to June 30, 2007 - after excluding the exceptional profit from the sale of poker machine entitlements - was a loss of \$1.58m.

The previous year's result, after excluding poker machine entitlements and the "one-off" settlement by Multiplex on the re-development of the Club, shows a loss of \$0.79m.

The accounts have been qualified by the auditors.

They are unable to form an opinion as to whether the amount included in the accounts for the valuation of "Land, New Clubhouse, Car Park and Plant And Equipment" is fair and reasonable.

They note the value of Land and Buildings "would be significantly

Forum

reduced if a revaluation was carried out by the company".

The auditors also note that the company's bankers have not indicated their continuing support of the company due to the company's inability to comply with the terms of the financing agreements - thus creating "material uncertainty regarding [the Club's] continuation as a going concern".

The Club's future would now appear to be firmly in the hands of its bankers who at end June were owed \$28.7m.

Their first priority must be to protect the interests of Suncorp Banking shareholders and any proposed re-structure will be targetted to that end

Michael Gillian
Ettalong Beach

Fluoride is not natural

Forum

the water by the Secretary of the NSW Department of Health is just a function of his office.

Trying to spin the process and responsibility away from those councillors who made the decision looks bad.

The mayor infers what the council puts in our drinking water will be natural.

It will be nothing of a sort.

It is hydrofluorosilicic acid, identified on council's website as a by-product of the purification of phosphate rock, where the high concentration of the toxic stuff is not acceptable in fertilizer.

I understand that is because of its transfer into stock and on to humans through milk, which is knocked back if the fluoride content surpasses strict standards.

This is just one of those many waste products which industry makes money on with the assistance of compliant government.

DDT is one Australians kept ingesting long after informed countries woke up.

In parroting the words "at this concentration, fluoride is not harmful or toxic", Mayor Macfadyen goes beyond his own acknowledged limited understanding, and into the realms of another political fantasy.

Edward James
Umina

GE food also 'safe'?

A prominent scientist has said: We'll eat GE (Genetically Engineered) food and like it.

They also say it's safe.

May I ask: On what evidence?

They told us asbestos was safe, DDT was safe, PCBs were safe,

Agent Orange was safe ... the list goes on.

The trouble is that agribusiness will flog this dangerous technology on the Third World which is mostly, and unfortunately, ignorant and corrupt.

The potential with GE crops is

new disease, new viruses, more allergies, toxins and poor nutrition.

The other trouble is that too many politicians do what big business tells them.

Keith Whitfield
Woy Woy

Let's see the action

Forum

Considering the presence of bushfires and other upsets that occur on the F3, this hole should rank as a top priority.

Finally, it would be hoped that the \$80 million, as promised, to construct the pipeline from Mardi

to Mangrove Mountain dam is in the bank and that work has already commenced and that we are kept informed on the progress.

We have all heard the promises, now let's see the action.

Rod Fountain
Erina

A1 PENINSULA PAINTERS

**Improve your home by thousands \$\$\$
No job too BIG or too small**



**Free quotes
Pensioner
Discounts**

Phone Ryan 0410 404664

Strata Lounges Re-Upholstery

Specialising in the recover of Lounges, Dining Chairs, Antiques, Cushions, Foam Supply, Fabric Protection. Motor Trimming, Marine Trimming, Car Roof Linings etc. Fully Qualified Tradesmen
A huge range of quality fabrics available.
Free pickup and delivery
Free quotes

Visit our Showroom at
52 Memorial Avenue, Blackwall.
(Under the Mountain)
Ph: 43428188

www.stratalounges.com.au

email: stratalounges@bigpond.com.au



JAYARS APPLIANCE SERVICE

13-15 Mutu St - Woy Woy
4342 3538 or 4344 3384



**Reconditioned Washing
Machines, Fridges and Dryers
from \$149 - all with warranty**

**See our
range of
quality new
and factory
seconds
vacuum
cleaners**

Australia Day

Performances for Australia Day

Australia Day celebrations at Woy Woy will include performances by the National Aboriginal and Islander Skills Development Association dance troupe and the Five Lands Band Spectacular.

These will be followed by a community lantern procession by land and sea and a fireworks finale.

Children's entertainment begins at 2pm with rides and face painting, as well as free activities and a colouring-in/drawing competition at the Country Women's Association (CWA) hall on The Boulevard.

Entertainers such as hand drumming and percussion group, Drumbala, and bush poet Fiona Hunt will feature on the main stage from 2pm.

At 6pm, a performance by local Aboriginal elders will precede the introduction of national Australia Day Ambassador, Debbie Watson OAM, and the Citizen of the Year at 6pm.

A free folk concert will be held in the CWA hall from 7pm.

A procession featuring 300 lanterns made by Gosford City residents and about 100 drummers and musicians begins at 8.45pm at the eastern end of the Memorial

Park, travelling along Brick Wharf Rd to Anderson Park.

For those wanting to participate, there will be a last-minute lantern-making and decorating workshop operating in Memorial Park from 4pm to 6pm on Australia Day.

The fireworks display at 9.15pm will conclude the festivities.

Australia Day road closures will be in force at Woy Woy from 6am to 10pm, with the Boulevard and Brick Wharf Rd along Woy Woy waterfront closed to all traffic.

Parking will be available at Woy Woy commuter car park.

Press release, 11 Jan 2007
Kate Carragher, Gosford Council



Twilight picnic at Wagstaffe

Australia Day will be celebrated in Wagstaffe with a free twilight community picnic to the sounds of jazz on Saturday, January 19.

Featuring local band "Peter Kinch and Friends", the Jazz Community Picnic at the Water's Edge will be held from 6pm to 9pm

in the Wagstaffe Hall grounds near the ferry wharf.

The event is sponsored by Gosford Council and coordinated by the Wagstaffe to Killcare Community Association.

Organisers stated that participants should bring their own food, drinks, chairs and rugs.

On Australia Day, Wagstaffe will

host a flag raising ceremony and community breakfast beginning at 8am at Wagstaffe Hall.

Actor and writer Graeme Blundell will MC the event.

Guest speaker will be local resident Doug Beckers, a National Parks ranger.

Press release, 11 Jan 2007
Kate Carragher, Gosford Council

Community workshops to make lanterns

A "spectacular" procession of 300 lanterns made at community workshops will be held as part of Gosford Council's Australia Day celebrations at Woy Woy.

The council is holding a series of nine community workshops to make the lanterns between January 14 and 24.

Workshops will be held at Peninsula Community Centre on January 15, from 10am to 1pm; on January 17, 2pm to 5pm; and on January 18, 10am to 1pm.

They will be held at Deepwater Plaza shopping centre on January 19, from 10am to 1pm, and on January 24, from 2pm to 5pm.

Adults and children have been invited to join local youth and senior citizens groups to make the lanterns.

With workshop numbers strictly limited to 50 people per session, bookings are essential on 4323 7299.

All children under nine must be accompanied by an adult.

Council media officer Ms Kate Carragher said that participants should bring a painting shirt, an apron or wear old clothes.

There will also be a last-minute lantern-decorating workshop at Memorial Park, Woy Woy, from 4pm to 6pm on Australia Day.

The lantern procession themed "Remembering the past, we light the future" will begin at 8.15pm prior to the fireworks at 9.15pm.

Kayaks and canoes will carry lanterns by water while the main procession, which includes six large feature lanterns, will travel along Brick Wharf Rd from Memorial Park to Woy Woy wharf.

Construction of the lanterns will be under the artistic direction of Jyllie Jackson and her team from Light'nUp.

Based in Lismore, Jyllie has over 18 years experience in lantern events, having started and now directing Lismore's lantern festival that attracts crowds of over 30,000 people to the events.

Press release, 11 Jan 2007
Kate Carragher, Gosford Council

Drummers wanted for Australia Day

Local drumming group In Rhythm are looking for fellow drummers to take part in the Australia Day celebrations in Woy Woy.

"Bring your drums or percussions for the biggest procession and finale Woy Woy has ever seen," In Rhythm representative Mr Tim Orgias said.

"This amazing event focuses

on the inclusion of all walks of life, living on the Central Coast and coming together to celebrate Our Australia, focusing on a positive outlook for the future."

Gosford Council has organised a Australia Day Lantern Procession for Saturday, January 26, from 7pm.

The focus on the night will be "Looking to the past, we light our future".

"We will be meeting at Brick Wharf Rd, Woy Woy, near Sonter Ave, at 5.30pm on the day for a rehearsal.

"With a light drum in hand, we will then walk into the centre of town to a waiting crowd of 10,000 people."

For more information, email Tim at tim@inrhythm.com.au.

Press release, 6 Jan 2007
Tim Orgias, In Rhythm

Rotary holds 'mega' raffle

The Rotary Club of Woy Woy is selling tickets for its Australia Day Mega Raffle.

The main prize in the raffle is a 6x4 box trailer filled with goods.

Club president Mr Ross Pearce said the prize included a four-burner barbecue, a cappuccino machine, and a multifunction computer printer.

"This prize is valued at \$4000," Mr Pearce said.

The second prize is a weekend for two at Mantra resort, Ettalong Beach valued at \$870.

The third prize is a pampering pack from Divine Image Umina and a luncheon cruise on Sydney Harbour, valued at \$355.

The tickets will be available from Rotarians at Deepwater Plaza and the prize will be drawn on Australia Day at Anderson Park.

Tickets are \$2 each or 3 for \$5.

Rotarian Charles Brock said the money raised would go to Rotary charities both on the Peninsula and overseas.

Press release, 10 Jan 2007
Ross Pearce,
Rotary Club of Woy Woy



Peninsula News
Community Access

is printed on 100% recycled paper products, even the ink is made from vegetable matter.

So when you're done reading this paper please recycle it or give it to someone else to read



26th January, 2008

**Wagstaffe Waterfront
8am - 10.30am**

**Breakfast by the bay
Flag raising ceremony
Guest speaker, Doug Beckers,
from National Parks and
Wildlife Service**

**Woy Woy Waterfront
2pm - 9.30pm**

**Musical performances
Children's rides
Market stalls
Lantern procession
Fireworks!**

For event details and updates visit
www.gosford.nsw.gov.au

Proudly
sponsored by



CENTRAL COAST
Express Advocate
Your community paper for over 50 years.



**AUSTRALIA
DAY 08**
gosford city



BROPHY

circus academy



looking to further your opportunities.

Aerial and Tumbling classes by specialist trainers will help you stand out from the crowd.

7 Years to Adults
Niagara Pk & Woy Woy

0438 627 325
www.brophyproductions.com.au



L 4369 2230 L

1st Lesson
\$40

www.awesomedrivingschool.com.au



106% Mortgages
DEFAULTS CONSIDERED

- Residential
- Rural
- Commercial
- Construction
- Seniors Loans

1300 799 063
www.maxfinancial.com.au
Call us we are local and have the experience to help you



Amour Boutique

For the latest fashions at affordable prices

Shop 1, 410 Booker Bay Rd, Ettalong (cnr Ferry Rd)
Open Tuesday to Sunday 9.30am to 4pm

Peninsular Office Supplies

4342 2150 or email: info@wallers.biz
Shop 8, 327 West St. Umina opposite Berith St.



Nokia 2310
• Speaker phone
• Easy to use interface
• Polyphonic ringtones

\$59 RRP
\$10 credit after your first recharge

\$29 = **\$130**
Prepay Jumbo Cap of standard talk, TXT & more

Make the most of now






WOY WOY

ONCE IN A LIFETIME OPPORTUNITY!!

Attention astute buyers and business people, we have on offer a very rare piece of Real Estate. This beautifully renovated and extended home is located across the road from the hub of Woy Woy. The home offers a variety of possibilities from dual income rent returns, a large family home or the largest bonus of all, the potential to run a business from it (subject to council approval). Within steps of shops and station you will never need a car.

- Huge 28 metre frontage to Victoria Road and located opposite The Pavilion and Kmart
- 4 large bedrooms and 2 new bathrooms
- 2 separate living areas, kitchenette to the 2nd
- Entertaining deck equipped with outdoor spa

56a Victoria Road



for sale \$650,000
view By appointment
agent Michael Reilly 0419 166 514 - michael@prdettalong.com



4344 5580
www.prdettalong.com

With climate change, the past is irrelevant

I have been made aware that current planning for flood damage mitigation and prevention uses the tried and trusted concepts of "100 year flood level" and the like.

This would be very wise -- if we lived in a steady-state world.

When those design tools were devised, the past was a pretty good guide to the future.

Sadly, thanks to the galloping climate change that now only the wilfully blind can deny, the past is now anything but a guide to the future.

It is irrelevant.

We know with 100 per cent certainty that sea levels will rise, within the expected lifespans of buildings being erected now.

We know that all weather patterns will gain in energy, and this means stronger winds causing higher waves.

If you would read Turning Up the Heat, a very readable book on climate change by distinguished Australian scientist Barrie Pittock, you will find out that climate change is not always

Forum

gradual and predictable.

There are also what he calls "threshold effects".

Something happens that causes a major change, in a very short time.

We know that all over the globe, ice is melting.

This is usually considered a steady, slow process, but it is one of the things that can change suddenly.

What if a large chunk of ice (like the size of NSW) were to suddenly break off the Antarctic ice sheet?

It could cause a very high wave that would certainly reach the Woy Woy Peninsula.

If I lived in your beautiful area, therefore, I would buy land right on the seashore, at the (current) sea level.

Why?

Because surviving a major catastrophe may be worse than dying from it.

Robert Rich PhD,
Healesville, Victoria

Rights to a voice at work

As in many other governance areas, this Federal Labor Government has an exceptional opportunity to revamp the adversarial industrial relations culture.

Surely it is not a matter of turning the clock back to some more acceptable stage of adversarialism but rather to catch up with what has been happening in other parts of the world for a long time.

The oft-heard catch cry about industrial relations "the Australian Way" clearly has connotations of either the Coalition way or the Labor way.

Could it be that this won't do anymore?

The dominant adversarial culture has thwarted the development towards participation in decision-making at the workplace level.

Earlier exceptions, such as Lend Lease, Dynavac, and a dozen

Forum

Letters to the editor should be sent to:

Peninsula News
PO Box 532,
Woy Woy 2256
or

mail@PeninsulaNews.asn.au

See Page 2 for
contribution conditions

others perhaps, have never scored as Best Alternative Practice.

Australia needs to consider legislation to give employees effective voice in their workplaces.

This could include the setting up of works councils or enterprise councils and the introduction of employee (staff) directors on a rotation basis.

Employee share ownership is one additional way to achieve an alternative culture promoted here by the Employee Share Ownership Association since 1986, with very modest success.

The 2000 Report Shared Endeavours, commissioned by the Howard Government, looked like a step in the right direction, which could be improved upon greatly by the dissenting ALP politicians who participated in that inquiry, including Julia Gillard.

The Rights at Work spirit can be extended to a new direction and a new culture: Rights to employee shares as well as voice in decision-making.

Trade unions in many other countries certainly subscribe to that view.

Klaas Woldring
Pearl Beach

Anyone for badminton?

As a newish resident on the Central Coast, I am surprised to find a complete lack of any badminton facilities or clubs in the vicinity.

As one of the fastest games on two feet, the lack of any players around here is surprising, given the vitality of the population around

Forum

this area!

I am trying to gauge the demand in the area for a weekly club-type session where players of all standards can meet and have a game or two.

If there is a demand for this,

then I will attempt to get a slot at a centre somewhere in the area.

If anybody, regardless of gender or age, is interested in starting such a club then mail me with interest at dsname@bigfoot.com with the aim of getting a weekly meet set up.

Duncan Snape
Blackwall

Why do more Peninsula based businesses advertise in Peninsula News than in all the other mediums combined?

- ✓ Peninsula News only carries articles about the Peninsula, directly targeted at Peninsula residents
- ✓ Peninsula News only has a maximum average of 35% advertising making all advertisements more visible
- ✓ Peninsula News has a long shelf life (2 weeks) giving readers time to complete the paper and see all the advertisements, before receiving another one
- ✓ Peninsula News is seen by the community as their newspaper and advertisers are seen as sponsors
- ✓ Peninsula News reaches all Peninsula families with school children, a very important target market
- ✓ All copies of Peninsula News are picked up by interested readers only, eliminating wastage and wet weather problems
- ✓ Newspapers are more effective as an advertising medium than radio, TV or cinema because people do not have to remember information. It is there for them to refer to in detail at their leisure
- ✓ Peninsula News advertising is far less costly than leaflets delivered in letter boxes, is more effective because it does not arrive with a myriad of other catalogues and is not subject to weather conditions

Why not get the most out of your advertising dollar?

Give us a call on 4325 7369

Pick of the crop

Pick of the crop 2008

1. Nick Charles - Path Of Least Resistance
2. Fiddler's Feast - Tinker's Way Part 1
3. Anne Ridgway - Planet Blue
4. Glenn Cardier - Close Encounter (With A UFO)
5. Marni Sheehan - Mama Was A Good Time Girl
6. Gary Shearston - Irish Girls (Will Steal Your Heart Away)
7. Rebecca Wright - All I See
8. Tony Eardley - Before The City Wakes
9. Mark Lucas & The Dead Settlers - Seven Days
10. Carmel Charlton - Spirit Of Mokare
11. Usual Suspects - How Long?
12. Jigzag - Jericho
13. Selalu - Don't Forget
14. The Fiddle Chicks - Adana
15. Penny Davies & Roger Iott - Big Water
16. Francham Smith - Have You Got A Heart
17. Roy Charles Abbott - Love Me Just As Me
18. Pete Hawkes - The Warlock's Dream

From the CD:
Path Of Least Resistance 3:30 New Kind Of Feeling
Tinker's Way Part 1 4:23 Freeze
Planet Blue 4:28 Turn Your World Around
Close Encounter (With A UFO) 3:01 Rattle The Cogs
Mama Was A Good Time Girl 4:06 Inside Stories
Irish Girls 4:22 Here & There Now & Then CD1
All I See 3:59 All I See
Before The City Wakes 4:03 Desire Lines
Seven Days 2:20 Sideways Alley
Spirit Of Mokare 4:21 Whispers On The Wind
How Long? 4:38 First Offence
Jericho 3:35 In The Middle
Don't Forget 4:00 When The World Was Young
Adana 3:13 Out The Window, Over The Gate...
Big Water 2:21 Big Water
Have You Got A Heart 3:52 Lovestongs
Love Me Just As Me 4:00 Pushing The Petals
The Warlock's Dream 5:33 Witchcraft

Pick of the crop - 2008

Published by Trad&Now, 2a Kabeena Avenue, Tascos 2250 - Ph: 02 4325 7369 Fax: 02 4325 7362
info@tradandnow.com

Ducks Crossing Publications, as the publisher of Trad&Now, is launching its own series of CDs titled **Pick of the crop**.

The series features selected tracks from CDs recently added to the Trad&Now on-line catalogue at www.tradandnow.com/shopping.

The first of these, **Pick of the crop 2008**, is now available for sale at \$20 + \$3 P+H.

It will also be issued free of charge to all new and renewing full subscribers to Trad&Now for 12 months or more.

Pick of the crop 2008 contains 18 tracks totalling over 70 minutes of excellent music as a taste of the wide variety of music genres now available through the on-line catalogue, heard at most festivals and covered in this magazine.

Phone orders: 4325 7369

or go to www.tradandnow.com/shopping to order online

Red Cross offers to call

The Red Cross Central Coast regional office has suggested that older Peninsula residents living alone register for its Telecross service.

Telecross is a free service, which is under-utilised on the Peninsula, providing a daily telephone call to elderly or isolated people who live alone.

Co-ordinator Ms Amber Edwards said that currently only 45 residents on the Peninsula were receiving Telecross services.

"We've been very fortunate to have not had any incidences on the Peninsula but we have had some in other areas of the Coast where Telecross has helped," Ms Edwards said.

"The service is available to the Peninsula residents 365 days a year and getting more Peninsula volunteers would be great as the service would not run without the efforts of our wonderful volunteers."

Currently, Red Cross is helped by 25 Peninsula residents who volunteer their time.

"It's very rewarding and the

commitment is only a quick phone call in the morning but many of our Telecross volunteers also volunteer in some of our other services, like Hands On Care, which also runs on the Peninsula," Ms Edwards said.

Every morning, elderly and housebound clients are contacted by trained volunteers with a reassuring daily phone call to check that they are "safe and well".

Following the recent discovery of a Sydney resident months after his death, Australian Red Cross secretary-general Mr Robert Tickner said it was very upsetting to hear an elderly person had died alone and no one knew about it for months.

"A simple phone call could have meant this tragedy was avoided, or at least discovered sooner," Mr Tickner said.

People interested in joining the Telecross service or becoming a volunteer can telephone the local Red Cross office on 4324 3411 or visit www.redcross.org.au.

Press release, 10-11 Jan 2008
Amber Edwards, Red Cross Central Coast Regional Office

Peninsula supports Ugandan orphans

Peninsula residents and the Kincumber-based Bouddi Voice Choir have provided "most of the funding" to support 456 orphans in Uganda, according to Integrated Community Development Foundation publicity officer Ms Sue McCarthy of Umina.

And now the organisation is seeking further support.

The Foundation in Uganda is a voluntary, non-denominational, community development group, working with HIV/AIDS.

"The main works is supporting 456 orphans in the rural and isolated communities of Kayunga and Nakasongola, places where well-established International Aid organisations rarely attend," Ms McCarthy said.

But the organisation also provided HIV/AIDS prevention education and other health information, using dance, song and drama.

Ms McCarthy said local residents had visited the organisation's executive director Mr Sam Bukenya in Uganda to witness and support the work there.

"We are fundraising now, and are looking to local businesses for donations of goods to hold a monster fundraising activity in



Internet Cafe

February," said Mr Bukenya, who is currently visiting the Peninsula.

"Besides donation of funds and sponsorship of children, we need laptop computers, and a double cabin pickup is needed to transport children to hospital, and for transporting equipment and materials when attending schools and communities for HIV/AIDS education."

Ms McCarthy said that local fundraising over the last two years meant that some of the orphans had been assisted with their schooling, assisted with bikes to get to school, and to make some money from a taxi-bike business.

"Others are being set up in making hand crafts for sale."

Ms McCarthy said: "Many of the orphans are living with elderly grandparents, in child-headed families, with un-related guardians, and when these living arrangements break down, or there is abuse and neglect occurring, the children are placed into boarding schools, if donated funds are available."

"About 45 of these orphans are HIV positive, and funds are not available for treatment."

She said that, because of the way the foundation was established, almost 100 per cent of funds donated was spent directly on the orphans and establishing support for their care.

"Administration expenses are kept to a bare minimum, with many of the services and costs donated by well-wishers and volunteers."

The organisation had been able to establish the "Central Coast Internet Café" in Bwayise, Kampala, in Uganda, a land-locked country.

"The computers were donated by a Kampala well-wisher.

"However, the cash needed came from the Central Coast fundraising," Ms McCarthy said.

Ms McCarthy said that the volunteer-run café would help to fund the organisation's activities.

The café has 10 computers, a scanner and a photocopier, and provides secretarial and copying services, she said.

"This café also can provide an opportunity for the orphans to volunteer there to learn about computers and secretarial services, have access to the worldwide web of information and to learn about business practices," Ms McCarthy said.

Continuous power supply was a problem in Uganda, and the café needed a diesel generator for the periods when power was off, she said.

"Funding is required to purchase a diesel generator and to rewire the premises and make some changes to the computers."

"So far, \$511 of the \$3700 needed has been raised."

Ms McCarthy said money raised from the Central Coast was also used to secure 70 acres of land, donated by a Ugandan Good Samaritan, which is located in Baale county.

Plans for the site include developing agriculture and training, but also an orphanage, peer support housing, schools and vocational college.

In addition, the site will be used to establish businesses that will, besides providing skills training for the orphans, provide income, leading to self-reliance for the organisation, and independence for the orphans.

For more information, telephone Mr Bukenya on 4344 3044 or incodefo@yahoo.com.

Press release, 8 Jan 2007
Sue McCarthy, INCODEFO



Central Coast Case Management Services

You should contact Central Coast Case Management Services when you or a person you know is having difficulties coping at home & requiring assistance with day to day tasks.

We can help you by linking you to services you need.

- Coordinating a variety of services
 - Assisting carers in their role
- Contact us to discuss if you are eligible

Ph: 4343 1888

113 Blackwall Rd
Woy Woy

DENTURE CLINIC

Keith Boyd
Dental Prosthetist

NO REFERRALS REQUIRED
For full and partial dentures, relines and repairs

Phone 4360 2755

OR

Call in at

112 Blackwall Rd

(Woy Woy Osteopath Centre)

Woy Woy



Gold Lic: 22994C
David

24hr
Emergency & Aged Pensioner Discounts

PRIDE PLUMBING

- All Plumbing & Drainage
- Hot Water Repairs & Replacements
- Gas Fitting & LPG
- Bathroom & Kitchen Renovations
- Blocked Drains/Electric Eel Service
- Guttering & Downpipes
- Water Tank Specialist
- Backflow & TMV Specialist

0409 180 596



A Not for Profit organisation, owned by the Community, providing Nursing Home & Hostel Accommodation for the Frail and Aged

- Permanent Accommodation
- Respite Care
- Secure Dementia Units
- Comprehensive Activities Program
- Meals prepared on site

WOY WOY COMMUNITY AGED CARE

- What is the best way to fund Aged Care?
- Can I afford Aged Care?
- Can I afford the facility I want, and what is it really going to cost?
- What's the best way to pay an accommodation bond
- Do I have to sell the family home, or are there other options?
- What Govt. subsidies am I entitled to and am I claiming my full allowance?
- How will my Centrelink or Veteran's Affairs pension be affected?

Accommodation Subsidies

Woy Woy Community Aged Care receives funding from the Commonwealth Dept. of Health & Ageing towards the cost of resident care. Funding levels are dependent upon the care needs of individual residents.

How can we Help?

Upon Application for Care, professional staff will provide the information you require and assist you to develop a payment option that best suits your financial circumstances.

Phone (02) 4344 2599 for enquiries

Let the Real You Step Out

Wanted
30 people to lose
5 - 30 kg fast

All Natural
Doctor formulated
Free personal weekly followup
Eat the foods you love

Call Trish
0403 574 884
4385 4682
trish.waistcontrol.com



New sample packs available

Weight gain, sports and kids nutrition programs also available
GOOD HEALTH THROUGH INTELLIGENT NUTRITION

Cashflow 'not impacted', says council

Gosford Council has denied claims it is on the "verge of losing lots of money" due to the current mortgage crisis in the US.

"The current downturn in global investment markets has not impacted Gosford Council's cashflow," according to Gosford Council acting director of corporate services Mr Alan Ford.

"It should be clearly understood that all the credit markets, worldwide, have been affected by the US mortgage crisis."

According to Mr Ford, Gosford Council has one residential mortgage backed security investment, which 37 other local councils also hold, that is directly linked to the US property market.

This represents 1.7 per cent of Gosford Council's total investment portfolio.

"The situation is that if the council were to sell some investment securities in the current and depressed market, then losses would occur," Mr Ford said.

"The full cash coupons for each of these investments are being paid and council's cashflow position has not been disadvantaged."

"Given the global credit situation, council continues to closely monitor the investment portfolio on a daily basis."

Mr Ford said each of council's investments conforms to the requirements of the Local Government Act, the Ministers Order on Investments and council's own investment policy.

Gosford Council has also denied suggestions made by another local council that they may become involved in legal action against a US financial services firm.

According to Bloomberg Television, Lehman Brothers faces legal action by Wingecarribee Shire Council in New South Wales for "deceptive and misleading conduct" after the value of its subprime-related investments dropped as much as 86 per cent.

Wingecarribee Council's general manager Mr Mike Hyde suggested that councils including Manly and Gosford may follow Wingecarribee in suing Lehman Brothers "within three to five months or sooner".

"In relation to the suggestion that Gosford Council is involved in legal action against Lehman Brothers, it should be made clear that this is not the case and council at this time has decided not to take action," Mr Ford said.

"As the market is expected to recover over the coming months, it has been decided to hold other investments to maturity or until the market recovers."

"In the meantime, Council has adopted the strategy of only investing in cash."

"Council staff are meeting weekly with investment advisors to regularly review the state of the market, the performance of the portfolio and Council's ongoing investment strategy."

Lyle Stone, Clare Graham,
11 Jan 2008

Interview: Alan Ford,
Gosford Council

Borefields will be 'officially opened'

The new Peninsula borefields will be "officially opened" in late February or early March "once all operating trials are complete", according to Gosford Council's manager of asset provision Ms Pam McCann.

Ms McCann stated in a recent email that the new Peninsula water treatment plant had been producing "high quality, potable water, and delivering it to the community intermittently", as part of a series of commissioning trials since November.

Ms McCann stated that these trials had allowed for finalising operational guidelines and testing the full capabilities of the new equipment.

The plant is capable of adding up to a maximum of 5 ML per day, but council stated that it only had a planned average operation of 3.8ML per day.

Ms McCann stated: "Council has generally been operating the plant at the lower end of the operating range for several reasons: monitoring of performance to ensure satisfactory water quality while progressively increasing production levels, to introduce the groundwater slowly to the customers, to minimise any sudden changes to the water supply system that may cause discoloured water in the area and to carry out a series of bore pumping scenarios to ascertain which suite of bores are operationally preferred".

She stated that there had been substantial streamflows, which had supplied the Central Coast water

needs since June, and these had allowed the gradual introduction of the groundwater at both the Peninsula and Narara borefields.

She stated that the total amount of water provided by the Woy Woy borefield to date was approximately 12 ML.

In discussing bushland monitoring, council stated that specialist consultants had completed a baseline ecological floristic survey.

Ms McCann stated that follow up surveys of the 10 sites within the four groundwater dependant ecological communities would occur at six month and 12 month intervals in accordance with the Environmental Management Plan for the Woy Woy Peninsula Borefield.

She also stated that the base line tree assessments for 500 trees in public reserves, which are situated within a 50m radius of the production bores, had been completed.

"Follow up surveys and assessments will occur initially at three months intervals," Ms McCann said.

"A controlled assessment comparison has also been included with a number of trees in similar condition outside the bore production zone for comparison."

"A review of frequency of future assessments will be determined after assessment of data collected over the first 12 to 18 months of borefield production."

Lyle Stone, 11 Jan 2007

Interview: Meaghan Wilkinson,
Gosford Council

CONVERT YOUR HOME MOVIES, VHS & 8mm TAPES TO DVD

From \$35.00

- ◆ *Editing*
- ◆ *DVD menus & titles*
- ◆ *Special Effects*
- ◆ *Music*

Can be added for an extra cost



CONVERT YOUR LP'S & CASSETTES TO CD

Prices start from \$15 per record. Cassette prices may vary.

Make your own compilation CD from \$25

Phone Lee on 4340 0530

DO YOU HAVE high blood sugar? a relative with diabetes?

If your blood sugar levels are higher than normal you may have prediabetes.

Around 1 in 5 people have prediabetes. Prediabetes is when your blood sugar is abnormal but not high enough to be diabetic. If you have a relative with diabetes you are at higher risk of having prediabetes.

The University of Western Sydney is conducting a study in Gosford to trial a new Chinese herbal medicine to treat prediabetes.

Call 43228937 or 0434576400 for more information on the study.



LOSE WEIGHT! STOP SMOKING! FEEL GOOD! NOW!

We have a range of solutions for your problem at an affordable price.

Ring Jocey Pittman, qualified and experienced in the Sharmah Way Woy Woy 0412 629 639

Woy Woy DENTAL CARE

Dr Mun Jong
Dr Nicola Burgess

Surgery Hours
Monday & Tuesday 9am - 7.30pm
Wednesday to Friday 9am - 5.30pm

109 Blackwall Rd
PO Box 42
Woy Woy 2256
(opposite the Woy Woy Leagues Club)
Ph: 4341 1751

It's time to take 30 at Curves.



**30% Off
+30 Days Free***

Discover how 30 minutes is all it takes to get a total body workout with our total support

Join Curves now and get **30% off** the service fee and **30 days free**.

Curves

'The power to amaze yourself.'

Over 10,000 locations world wide

L1, Clock Tower Bldg
26 Railway St
WOY WOY

4344 5222

What's On in and around the Peninsula

Listings in this section are free to not-for-profit community groups although a subscription to help support Peninsula News would be appreciated.

Many events listed take place at the following locations:

BFC, Beachside Family Centre, Umina Public School

CWA, CWA Hall, Anderson Park, Brick Wharf Rd, Woy Woy

EBACC, Ettalong Beach Arts & Crafts Centre, Kitchener Park, Cnr Picnic Pde & Maitland Bay Drive, Ettalong 4341 8344

EBWMC, Ettalong Beach War Memorial Club, 211 Memorial Ave., Ettalong 4341 1166

ECC, Everglades Country Club, Dunbar Rd, Woy Woy 4341 1866

EMBC, Ettalong Memorial Bowling Club, 103 Springwood St Ettalong 4341 0087

EPH, Ettalong Progress Hall, Memorial Ave, Ettalong

ESCC, Ettalong Senior Citizens Centre, Cnr. Karingi St & Broken Bay Rd Ettalong 4341 3222

MOW, Meals on Wheels Hall, Cnr Ocean Beach Rd and McMasters Rd.

PBPCC, Pearl Beach-Patonga Chamber Of Commerce, (meets at) Pearl Beach Café, 1 Pearl Pde, Pearl Beach.

PBPH, Pearl Beach Progress Hall, Diamond Rd, Pearl Beach 4342 1459

PCC, Peninsula Community Centre, 93 McMasters Rd, Woy Woy 4341 9333

PCYC, Osborne Ave., Umina Beach 4344 7851

PWHC, Peninsula Women's Health Centre, 20a McMasters Rd Woy Woy 4342 5905

UCH, Umina Community Hall, 6 Sydney Ave., Umina Beach 4343 1664

WH, Wagstaffe Hall, Cnr Wagstaffe Hall & Mulhall St Wagstaffe

WWAC, Woy Woy Aged Care, Kathleen St 4353 4224

WVEC, Woy Woy Environment Centre, 267 Blackwall Road Woy Woy 4341 7974

WWLC, Woy Woy Leagues Club, 82 Blackwall Rd Woy Woy: 4342 3366

WWPH, Woy Woy Progress Hall, 76 Woy Woy Rd

DAILY EVENTS

Woy Woy **Pelican Feeding**, 3pm Pelican Park, Fishermans Wharf.

Playtime Mon-Fri 9am, Little Gym **PCYC**

TUESDAY

First Tuesday of every month

Buffalo Primo Lodge No 9, 7pm, **UCH**.

Second Tuesday of every month

Playgroup for Aboriginal & Torres Strait Island families, **BFC**

True Blue Meeting, 1.30pm; **Toastmasters**, 7pm, **EBWMC**

Get Together afternoon tea, **ESCC**,

Pearl Beach Craft group, **PBPH**, 1.30pm.

Stroke recovery group, 11.30am, **MOW**.

Diabetics Support Group, 10am, **ECC**

Third Tuesday of every month

Buffalo Lodge Knights Chp9, 7pm, **UCH**

Woy Woy Peninsula **Arthritis**

Branch, 10am, enq: 4342 1790, **MOW**

Fourth Tuesday of every month

Playgroup for Aboriginal & Torres Strait Island families. **BFC**

Toastmasters, 7.15pm, **EBWMC** **Combined Pensioners** assoc afternoon tea, enq: 4341 3222, **ESCC**

Every Tuesday

Chess Club **EBWMC** 1pm enq: 4341 8748

Woy Woy Blood Bank welcomes donations Ocean Beach Road, Woy Woy 1pm to 7pm

Free Tax Help by Appt., School for Seniors (Cards, Craft & Games) 9am; **Playgroup** 9am; **Occasional Care**, 9am; **U3A Courses, Pre-School Playgroup**, 12.30pm; **Over 55s Learn To Play Bridge**, 1pm; **Stroke Recovery**, 2pm; **The Web**, from 2pm; **Dance & Theatre School**, 3.45pm; **Brophy Circus Academy**, 4.30pm; **Belly Dancing**, 4.30pm, **PCC**.

Circuit Boxing (Women) 9am, **Boxing/fitness training**, 4pm (Junior) , 5pm (Senior), **Breakdancing**, 5pm; **Gym Sessions** 8am; **Gym Circuit** 9:15am & 6pm; **PCYC** **Rotary Club of Woy Woy**, 6pm, **ECC**

Ladies Indoor Bowls-9am; **Handicraft**-9am; **Cards**-12.30pm; **Computers**, 9am, **ESCC** .

Alcoholics Anonymous 6pm John the Baptist Church Hall, enq: 4379 1132

Bowls; 10am, **Card Club**; 7.15pm, **Chess Club**, 1pm, **EBWMC**

Tai-Chi classes, 9.30am (ex sch hols), enq 4360 2705, **WH**

Folk Art 9.30am, **Silk Painting** 1pm, 15th Oct - 15th Dec **EBACC**.

Enquiries: Penny Riley ph. 43427660

Children's story time, Umina library, 10.30 am (Except Jan).

Sahaja yoga meditation, 10:30am enq: 4328 1409, **CWA**

Playgroup 10am Kids 0-5yrs, **WWPH**, enq: Juhel 4342 4362

Woy Woy Blood Bank, 11.15am to 8.45pm, session time 1pm to 7pm, Ocean Beach Rd, Woy Woy

Tap Dancing, **EPH**, 6pm, enq: 0438 033 039

WEDNESDAY

First Wednesday of every month

Older women's network, 10.15am, enq:4343 1079, **WWLC**

CWA social day, 10am, handicrafts, 1pm, enq: 4344 5192, **CWA**

Ettalong Ratepayers & Citizens Progress Association, 7.30pm, **EPH**

Second Wednesday of every Month

Red Cross, Umina branch meeting, Umina Uniting Church Hall, 1:30pm.

Woy Woy **Auxiliary**, 10am enq: 4344 2599.

Umina Beach **Probus Club**, 9.30am, **ECC**

Third Wednesday of every month

Woy Woy VIEW Club - Luncheon, 10.30, enq: 4344 1440, **ECC**

Fourth Wednesday of every month

Everglades **Probus Club**, 10am, **ECC**, enq: 4341 0664

Every Wednesday

Al-anon/Alateen family support group "The Cottage" Vidler Ave

Woy Woy, 12:30pm, 7pm.

St John's Ambulance; 7pm, **Meals on Wheels**

St John's Ambulance; Brisbane Water Cadets, 6.30pm - 8pm, Enq: 0404 748 471.

Free Tax Help by Appt., Occasional Care, School for Seniors, 9am; **Playgroup**, 10am; **Bridge Club**,. 9.30am & 7.30pm; **The Web**, from 2pm, **Physical Culture Club**, 3.45pm, **Coast Care Counselling Judo**, 5pm; **Weight Watchers**, 6pm; **Belly Dancing**, 7.30pm; **PCC**.

Peninsula **Choir** rehearsal 7.30pm St Andrews Hall Umina.

Brisbane Waters **Scrabble Club**, **MOW** 6pm, enq: 4341 9929.

Seniors fitness EPH 9am, enq: 4385 2080.

Indoor Bowls 9am; **Fitness** 1pm **Leatherwork** 9am; **Table Tennis** 9am. **Scrabble** 1pm; **Computers**, 1.30pm, **ESCC**

Gym Sessions 8am (Incl Self Defence for Young Women 1pm; **Gym Circuit** 6pm; **Circuit Boxing** (Women) 9am, **Boxing/fitness training**, 4pm (Junior) 5pm (Senior), **PCYC**

Oils & Acrylics 9am, **Pastels & Drawing** 11.30am, **EBACC**, 15th Oct-15th Dec. **Enquiries: Penny Riley Ph. 43427 660**

Children's story time, Woy Woy library, 10.30 (Exc Jan).

Alcoholics Anonymous 12.15 & 6.30 , St John the Baptist Hall, Blackwall Rd, Woy Woy.

Handicraft CWA, 9am, enq: 4341 1073.

Country Women's Association (CWA) Umina Beach craft day, 9am - noon, CWA Hall, Sydney Ave, Umina, enq: 4341 5627.

Rotary Club of Umina, 6pm, **ECC**

Dance Club, 1pm, **EBWMC**

THURSDAY

First Thursday of every month

Brisbane Water Senior Citizens, 1pm; **EBWMC**

Second Thursday of every month

Women's Health Clinic Enq 4320 3741 **PWHC**

Australiana Bus Trips PCC **Third Thursday of every month**

Brisbane Water Senior Citizens, 1pm; **EBWMC**

Fourth Thursday of every month

9am **Free immunization** clinic for Aboriginal & Torres Strait Island children 0 – 5 years, **BFC**

Umina **Probus**, **ECC**, 10am. **Women's Health Clinic**; **PWHC** 4320 3741

Every Thursday

Creative Writing, **CWA**, Enq 4369 1187

Childrens Art, 4.30pm, 15th Oct-**Occasional Care**, 9am; **Music Program**, 9am; **Yoga**, 10am; **School for Senior Australiana**, 10.30am; **Tai Chi**, 11.30am & 7.30pm; **Bridge**, 12pm; **The Web**, from 2pm; **Brophy Circus Academy**, 4pm; **Kids' Yoga**, 4pm; **Belly Dancing**, 6.30pm & 7.30pm; **Coast Care Counselling PCC**

Free entertainment 6.30 pm, **School for Learning/Seniors** 9am; **Senior Snooker** 8.30am

Ballroom Dancing, 10am, **Trivia**, 7pm, **Indoor Bowls**, **Fishing Club**

Raffle 5.15pm, **EMBC**. **Bouddi Women's Drumming**,

2pm, 73 Highview Rd Pretty Beach, enq: 0425 229 651.

Scrabble, 12.30pm. **WWPH** , **Children's art classes** 4.30pm, **EBACC**

Card Club, 1pm; **Chess Club**, 7.30pm, **EBWMC**

Tai Chi 11.30am & 3.45pm; **Dancing** 9am; **Indoor Bowls**, 9am; **Table Tennis**, 1.45pm; **Cards** noon, **ESCC**

Children's story time, 3 - 5 yrs Umina library, 10.30am (Exc Jan)

Gym Sessions 8am, **Gym Circuit** 9am & 6pm **Circuit Boxing** (Women) 9am, **Boxing/fitness training**, 4pm (Junior) , 5pm (Senior) **PCYC** .

Social Tennis 9am-12pm, Pearl Beach Courts, enq: 4369 3195.

Adult tap dancing, **EPH** 10am; enq: 4342 3925

Fairhaven Services **Cash Housie**, Ettalong Bowling Club 7.30pm

Dance, 9am - 11:30am, **ESCC**, enq: 4344 3131.

FRIDAY

First Friday of every month

Legacy Ladies, 9am; **EBWMC**

Second Friday of every month

2pm **Peninsula Twins Club** Free. **BFC**

RSL Sub Branch Meeting EBWMC, 2.30pm.

Third Friday of every month **Legacy Ladies**, **EBWMC**, 10am, enq: 4343 3492.

Fourth Friday of every month

South Bouddi Peninsula Community Assoc, **WH**, 1.30pm, enq: 4360 1002.

Civilian widows, **ESSC**, 1pm. **School for Seniors Bushwalking**, **PCC**

Every Friday

Kids entertainment Yrs 7 -12, 7.30pm, **Playgroup**, 10am Umina Uniting Church.

Bingo 11.30am, **UCH** Enq:4343 1664

Lollipop Music Playgroup BFC 9.15am. Enq: 43 431929.

Old Wags **Bridge Club**, **WH** (except 4th Fri) 1:30pm, enq: 4360 1820.

Aqua-fitness, Woy Woy Hospital Hydro Pool, 1:30 & 2.30pm, enq: 4325 1869

Active Over 50's **Exercise Class EPH** 9.15am, enq: 4342 9252

Watercolour Painting 10am, **EBACC**, 15th Oct - 15 Dec. **Enquiries: Penny Riley** ph. 4342 7660

Painting 9am, **Computers** 1pm, **Scrabble** 1pm **ESCC**

Gym Sessions 8am, **Gym Circuit** 9am **Circuit Boxing** (Women) 9am, **Boxing/fitness training** 4pm (Junior) 5pm (Senior) **PCYC**

Peninsula Pastimes Ettalong Baptist Church, Barrenjoey Rd. 9.30am, (Ex sch hols), **Primary Kids Club** 4.30pm, enq:4343 1237

Alcoholics Anonymous 6pm, St John the Baptist Hall, Blackwall Rd, Woy Woy, enq: 4342 7303.

Hardys Bay Community Church, **indoor bowls, canasta, scrabble, morning tea** 10am, enq 4363 1968.

Occasional Care, 9am; **Kindy Gym 0-3s** 9.15am, **3-5s** 10.20am; **Weight Watchers**, 9.30am; **Smart Recovery**, 10am; **Samaritans Support Group**, 10.30am; **Bridge Club**, 12pm; **The Web**, from 2pm;

Brophy Circus Academy, 5pm; **Kempo Karate**, 5.30pm; **Judo**, 7pm; **U3A Courses**, **PCC**

Women's walking group, 9am - 11am **PWHC**

Fishing Club. **EBWM** Krait RSL Day Club - 10am, **WWAC** - 4341 8564

Fairhaven Services **Cash Housie**, East Gosford Progress Hall 7.30pm

SATURDAY

First Saturday of every month

The National Malaya & Borneo **Veterans Assoc. Meet**, **EBWMC**, 2pm Enq: 4340 4160

Second Saturday of every month

Melaleuca Wetland **Regeneration** Group, Boronia Ave, Woy Woy, 8am.

Pretty Beach **Bushcare** group, Pretty Beach end Araluen Track, 8am.

Save our Suburbs, 1pm, enq 4342 2251 **WWPH**

Ex-Navalmen's Assoc, Central Coast Sub-Section, **WWLC** 10am.

Scrapbooking 12pm, **PCC**. enq 4342 3712

Third Saturday of every month

Umina P&C **Bushcare** 9am, Umina Campus of **BWSC**, Veron Rd Umina. enq: 4341 9301

Market Day, 9am Sydney 2000 Park, **UCH**.

Peninsula Residents Association, 2pm, **Peninsula Community Centre**, Cnr Ocean Beach Road and MacMasters Road.

Fourth Saturday of every month

Troubadour **Acoustic Music Club**, 7pm **CWA** Enq: 4341 406

Last Saturday every month **Wagstaffe Bushcare** group, Half Tide Rocks sign, 8am.

Melaleuca Wetland **Regeneration** Group, Boronia Ave, Woy Woy, 8am

Every Saturday

Chess Club **EBWMC** 1pm enq: 4341 8748

Weight Watchers, 8.30am; **Dance & Theatre School**, **Bridge Club**, 12pm; **Gambling Anon**, 2pm; **The Web Drop In Centre**, 4.30-9.30pm, **PCC**

Cash Housie St Mary's Hall, Ocean View Rd Ettalong 7.30pm.

Chess Club, 1pm; **EBWMC** **Childrens Pottery** 9.30am

Silvercraft 1pm, , 15th Oct - 15th Dec, **EBACC**. **Enquiries: Penny Riley** ph. 4342 7660.

Gym Sessions 9am, **Drama & Discovery** 9am **PCYC**.

Brisbane Water Bridge Club, 12.30pm, Enq: 4341 0721, **WWLC**

Al-anon/Alateen family support group Community Health building, Woy Woy Hospital 2pm Enq: 4344 6939.

Woy Woy Environment Centre 10am. **WVEC** Enq 4342 6589.

Car Boot Sale, Ettalong Markets. Community Dance, 1pm to 4pm, \$2, **ESCC**, Enq: 4344 3131 / 4341 3222

Social Dance, New vogue, old time, \$3 (inc. afternoon tea), 1pm, **ESCC**, enq: 4344 3131.

SUNDAY

First Sunday of every month

Blackwall Mountain **Bushcare**,

What's On in and around the Peninsula

9am cnr Blackwall Rd & Memorial Ave Enq: 4342 6995

Second Sunday of every month

Ladies Auxiliary of Vietnam Vets, 10 am, Vietnam Vets, 11am; **EBWMC**

Umina P&C **Bushcare** 9am BWSC, Enq: 4341 9301

Third Sunday of every month

Bushcare Group, Tennis Courts, Empire Bay, 9am Enq: 43692486

Ettymalong Creek Landcare, Ettalong Rd, Umina, 8am, enq: 4342 2251.

EBWM Fishing Club competition at Club House in Beach St, Ettalong.

Fourth Sunday of every month

Burrawang Bushland reserve **bushcare**, Nambucca Dr playground 9am 4341 9301.

Last Sunday of every month

Lions Club Boot Sale & Mini Market, Rogers Park Woy Woy Enq: 4341 4151

Every Sunday

Fijian Cultural Group, 11am-4pm, **PCC**

Coast Community **Church Services** 9am & 5pm Enq 4360 1448

Al-anon/Alateen family support group "The Cottage" Vidler Ave Woy Woy 7pm.

Patonga Bakehouse Gallery 11am Enq: 4379 1102

MONDAY

First Monday of every month

Endeavour View Club Luncheon **ECC** Contact 4342 1722

Pretty Beach P S **P&C**, Resource Centre 7:30pm, ph 4360 1587.

Grandparents Parenting Support Group, Web Riley Room Catholic Church Woy Woy 4342 9995

Country Women's Association meeting, 10am, CWA Hall, Sydney Ave, Umina, enq: 4341 5627.

Second Monday of every month

Save the Children St Andrews Church Hall, Ocean Beach Rd Umina 1-30pm Enq 4324 4389

Women 50+ Group Chat, **PWHC RSL Women's Auxiliary**, 9am; **RSL Sub Branch**, 2.30pm; **Card Club**, 1pm, **EBWMC**

Pretty Beach/Wagstaffe **Progress Assoc WH** 7:30pm, Enq: 4360 1546

Killcare Heights **Garden Club**, 10:30am, Enq: 4344 4520
Coastal **Crones** (over 50's), **PWHC**

Third Monday of every month

War Widows, 11am, **EBWMC** Enq: 4344 3486

Fourth Monday of every month

Labor Party Peninsula Day Branch, **CWA**, 1pm.

Carers support group, Group room, Health Service Building, Woy Woy Hospital, Enq: 4344 8427.

Last Monday of every Month

WWLT Playreading, Woy Woy P.S. 7.30pm, Enq: 4341 2931

Every Monday

Walking with other Mums Enq: Liz Poole 4320 3741

3Cs—Craft, Coffee & Conversation, 12.30pm **BFC**. Enq: 43 431929

Yoga WH 9.30am Enq: 4360 1854.

Computers, 1pm, **Dancing** 9am; **Indoor Bowls**-9am; **Mahjong** 1pm; **Fitness** 1pm; **Yoga** for beginners 2.30pm; **ESCC**.

Gym Sessions 8am, **Tiny Tots** 9:15am, **Circuit Boxing** (Women) 9.00am, **Boxing/fitness training**, 4.00pm (Junior) , 5pm (Senior)

PCYC

Carpet Bowls, 9am, **EBWMC**

Fairhaven Cash Housie 7.30pm & **Bingo** 11am **EMBC** enq: 4323 3566

Arts and Crafts for people with a disability 11am, Enq. 4341 9333

Patchwork & Quilting, 10am, **Pottery** 10am & 1pm 15th Oct - 15th Dec **EBACC** Enq: Penny Riley 4342 7660

Children's Story Time, Woy Woy Library. 10.30 am

Occasional Childcare, 9am; **Volunteering**, 9am; **Gentle Fitness**, 9am; **Supported Playgroup**, 9.30am & 12.30pm; **Yoga**, 10am; **Second Chance**

Craft, 11am; **Bridge Club**, 12pm; **Physical Culture Club**, 3.45pm; **Coast Care Counselling**, 4pm; **Dance & Theatre School**, 3.45pm; **Judo**, 5pm; **U3A**

Courses, **PCC**

Craft group, 1pm **BFC**

Fairhaven Services **Cash Housie**, Ettalong Bowling Club 7.30pm

Upcoming Events

January 15 - Community Work shops to make lanterns, as part of the Australia Day parade at Woy Woy, Call 4323 7299 for bookings

January 19 - Wagstaffe Twilight community picnic to the sounds of Jazz

January 20 - Rockpool Ramble 1pm- 2:30pm, Pearl Beach, bookings req'd, enq: 4349 4756

January 21 - **EBWMC** AGM (members only)

January 26 - Wagstaffe Waterfront Breakfast by the bay, Flag raising ceremony.

Australia Day celebrations, Woy Woy waterfront from 2pm to 9:30pm. Musical performances, children's rides, market stalls, lantern procession & fireworks.

Patonga Bakehouse Gallery will be holding a 'Scrub Series' exhibition with Dr Julian Meagher

If you would like your community not-for-profit event listed here, send the details to Peninsula News

Poetry entries are wanted

The Central Coast Poets Inc is asking for entries into the Henry Kendall Poetry Competition from Peninsula residents.

The group will publish a selection of the poems entered in the competition in an anthology.

"Our last anthology Mood Cumulus was launched with great success at The Peninsula Theatre," said president Mr David Harrison

"Our members conduct this competition every two years to promote the writing and appreciation of poetry," he said.

"Many poems are written especially for the competition.

"With a first prize of \$500, it brings poets recognition and financial reward."

Umina resident Ms Shirley Hotchkiss is involved in organising the competition.

"Poetry offers us a way of understanding ourselves and the world," Ms Hotchkiss said.

"Most of the prize-winning and commended poems in the last competition were about relationships and insights on intimacy.

"It was also interesting that four of these poets had two poems each in the top ten.

"Andrew Slattery was last year's winner with a poem about his father titled Lithagraphone."

Ms Hotchkiss said that, before joining Central Coast Poets Inc, "poets were a mysterious lot to me, probably because the ones I

studied at school were all famous and dead".

"The ones I now know are just like you and me: They go to work, do the usual domestic chores, and find time to write poetry."

Entry into the competition is \$7 each poem and open until Monday, March 10.

Entry forms are available at Central Coast libraries or can be downloaded at www.fusionarts.org.au

Entries must be in hard copy and posted to The Convenor, Henry Kendall Poetry Award Central Coast Poets Inc, PO Box 780, Woy Woy NSW 2256.

Press release, 7 Jan 2007
Shirley Hotchkiss, Henry Kendall Poetry Competition

New group forms at environment centre

The inaugural annual meeting of a new environmental umbrella group will be held at the Woy Woy Environment Centre on the same day that the centre's management committee will hold its annual meeting.

The centre's Section 355 committee which manages the building will hold its annual meeting at the centre in Blackwall Rd, Woy Woy, at 2pm on Saturday, February 9.

The meeting, which will be open to the public, will hear a report of the committee's activities for the year, along with a financial report.

All committee positions will be declared vacant and a new committee will be elected for the coming year.

At 11am on the same day, a meeting of interested people will be held form an umbrella group for local environment groups, the Peninsula Environment Group.

Aims of the group will include coordinating environmental activities on and around the Peninsula.

It will aim to increase environmental awareness and participation and to promote the principles of ecological sustainability.

It will also support the continued

operation of the Woy Woy Environment Centre.

The inaugural meeting of the group is expected to adopt a draft constitution and to adopt a seven-person committee.

The group is expected to hold monthly meetings to which all members will be invited.

The centre is housed in the old St Luke's Church building at the corner of Blackwall Rd and Billabong St, Woy Woy.

For further information, contact Mark Mann on 4342 6589.

Mark Snell, 12 Jan 2008
Steering committee notes



North Burge Rd, Woy Woy
4341 7598

Introducing - Joanne and Ping

Garden Court Restaurant

Open Lunch and Dinner - Tuesday to Sunday
Large menu range of Asian and Western Meals

Offering- 10% discount on member's meals
\$6.00 lunches (Asian and western options) Tuesday - Friday

Trading hours:
Open: Lunch 12pm - 2pm Tuesday- Sunday ~ Dinner 5:30-8:30 Tuesday - Thursday
Fri & Sat Night 5.30-9.00 pm ~ Sunday Night 5.30-8.30pm

What's happening?

HAPPY HOUR.. Everyday 9am-12pm
\$2.90 schooners \$2.50 middles!!

Tuesdays

Lingerie Waitress and Pool comp starts 5pm

Thursdays

Surf and turf Raffle Tickets on sale: 5pm
Plus Members' Badge Draw...followed by
karaoke!! & Darts

Fridays

Madness- Happy hour 5pm to 7pm..
Schooners \$2.50, Middles \$2.00

Saturdays

Saturday Morning Raffle tickets on sale
Fisho's raffle from 7pm

Sundays

Childflight (every third Sunday of the month)
Free poker from 1pm

Membership - now only \$2.50

OUT NOW!



Available from your local newsagent
(distributed by Wrapaway) or online from
www.tradandnow.com.

See our extensive range of over 650 Australian
traditional and contemporary folk, blues, roots,
alternative and world music CDs, DVDs and
books at **www.tradandnow.com/shopping**

Medicine meets art

Patonga Bakehouse Gallery will be holding a 'Scrub Series' exhibition by Dr Julian Meagher on Saturday, January 26.

The directors of the Bakehouse Gallery Ms Jocelyn Maughan and Mr Robin Norling first encountered Dr Meagher more than 15 years ago when he was "an impressive young talent with loads of motivation".

Dr Meagher studied medicine and managed to paint in his spare time.

Half way through his medical studies he took a year off to further develop his art skills at the Charles Cecil studio in Florence.

"Since then he has completed his medical studies as well as holding five independent shows and participated in numerous group

exhibitions," Ms Maughan said.

"Given his background, it is no wonder that his paintings are a marvelous mix of his two worlds, medicine and art.

"The exhibition features his Scrub Series; an ambiguous operating theatre narrative, told through the colours, instruments, drama, people, sterility and spills that are part of the 'theatre' of an operating theatre.

"Julian describes it as a kind of dirty romantic realism."

Julian Meagher's exhibition is displayed in the gallery's shopfront window, where the work can be viewed 24 hours a day, until the end of February.

"Julian has a family attachment in Pearl Beach," Ms Maughan said.

"This has been like a second studio for him when he escapes from his city studio in Chinatown."

The Patonga Bakehouse Gallery has on display current work by Robin Norling and Jocelyn Maughan.

However their most recent work is a mural decoration for the new Patonga Beach Hotel and restaurant.

According to Ms Maughan and Mr Norling, the mural celebrates the fishermen and landscape of Patonga.

The "Scrub Series" exhibition will have an opening 5 to 7pm on Saturday, January 26.

Press release, 1 Jan 2007

Robin Norling and
Jocelyn Maughan,
Patonga Bakehouse Gallery

Exhibition at Long Jetty

Umina artist Ms Judith Hoste will be holding an exhibition at the Rogue Gallery, Long Jetty, from Thursday, January 24.

The exhibition Nature's Magic is a mix of works depicting "the beauty of nature around us".

The official opening of the

exhibition will take place on Australia Day, Saturday, January 26, at 2pm to 4pm.

"There will be a mixture of oils, acrylics, watercolours and subjects, including many local scenes, local wildlife and flora," Ms Hoste said.

"This makes it a well-balanced exhibition using complementary colour combinations."

Rogue Gallery is located at 394 The Entrance Rd, Long Jetty.

Gallery hours are from 9am to 5pm Monday to Friday and 9am to midday on Saturdays.

For more information, contact 4334 1818.

Press release, 11 Jan 2008

Judith Hoste, Umina



BRASSERIE / CAFÉ OPEN 7 DAYS

FRESH NEW SUMMER MENU

All the favourites plus tasty specials in Seafood; Asian; Curries, Gourmet Pizzas; Hot Rocks;

Specialty Evenings From 20.01.2008

Sunday - Carvery **

Monday - Steak **

Wednesday - Schnitzel **

Friday - Reef'n'Beef

** Family price specials available

Saturday - evening BBQ

Sunday - lunch BBQ

Breakfast open from 7.30am.

a-la-carte or weekend buffet

Coffee Shop: Open

Daily : 7.30am to 9.30pm

Lunch open from 12.00 midday

Express Specials from just \$5.00*

Dinner from 5.30pm

THURSDAY NIGHT CHICAS Lounge

Trivia from 7-9pm

With the "Professor" Graham Lewis

Karaoke from 9-12mdnt

Cash prizes

IN RILEYS LOUNGE ALL FREE

Friday 18 January

"NOVOTONE" @10pm

Saturday 19 January

"PARTY PIGS" @9.30p

Sunday 20 January

Jazz on the Terrace

"ANDREW GODBOLD QUARTET"

@1pm

TEXAS HOLD 'EM POKER

Sundays from 1-7pm

Mondays from 7-11pm

Tables available all week long for practice games

AUSTRALIA DAY WEEKEND

Friday 25th January

"SOUL TATTOO" from 10.00pm

Saturday 26th January

"THE POLICE" show from 9.30pm

Sunday 27th January

"VENUS MUSIC" Jazz on the ocean front Terrace from 1.00pm

"FAB FOUR" Beatles Tribute 9.00pm

ANNUAL GENERAL MEETING

Sunday 20th January 2008

Commencing 9am sharp

Only Members financial

as at 21.12.2007

Eligible to attend and vote

ETTALONG



B E A C H C L U B

Ettalong Beach War
Memorial Club

51 - 52 The Esplanade

Ettalong Beach NSW 2257

Telephone (02) 4343 0111

Fax (02) 4342 3639

www.ettalongbeachclub.com.au

*Members' prices - Non- members add 10% so why not join now for only \$5

Details correct at time of printing



Peninsula resident wins trailer prize

A Peninsula resident has won over \$1800 worth of prizes in last year's Kariong-Somersby Rotary trailer raffle.

A Mr Dyer of Woy Woy received first prize at the club's Carols by Candlelight on December 22, held at Mt Penang.

He received a new box trailer filled with garden and landscaping items, including chainsaw, blower,

lawn mower, compost bin, line trimmer and wheel barrow.

The funds raised from the raffle will go towards polio eradication, breast cancer research and other Rotary community projects.

"The winning ticket was drawn by Santa Claus who arrived courtesy of the local Kariong Fire Brigade at the Concert and Carols by Candlelight held at Mt Penang,"

public relations director Mr Peter Mulholland said.

"Although early showers deterred many expected visitors, around 200 residents and visitors enjoyed the delayed event, which featured Brisbane Water Brass Band, the Sing Australia Gosford Choir and Whipcracking by Gary Kirkby."

Press release, 8 Jan 2008
Peter Mulholland, Kariong-Somersby Rotary

Grants approved for flood projects

Grants totalling \$335,000 have been approved for flood-related projects on or close to the Peninsula.

Grants awarded include \$40,000 for the Brisbane Water Flood Study, \$90,000 for the Davistown and Empire Bay Flood Study, \$5000 for the Fraser Rd Creek Flood Risk Management Study, \$5000 for the Middle Creek Flood Risk Management Study, \$50,000 for the Pretty Beach Catchment Flood Mitigation Works, \$50,000 for the Turo Creek Pretty Beach Channel Improvements, \$5000 for the Turo Reserve Creek Flood Risk Management Study, \$30,000 for Wagstaffe Catchment Flood Mitigation Works and \$60,000 for the Woy Woy Peninsula Flood Study.

The funds have come from the State Assisted Floodplain Management Program.

Under this program, the NSW Government contributes 67 per cent of the cost and councils contribute the remaining 33 per cent.

Member for Gosford Ms Marie Andrews has welcomed grants designed to assist Gosford Council to reduce the impact of flooding.

The funding aims to provide appropriate levels of flood

protection to existing and future development through structural and non-structural flood mitigation strategies.

"The floods experienced over the June long weekend last year have demonstrated just how important it is to continue with flood studies and flood mitigation work," Ms Andrews said.

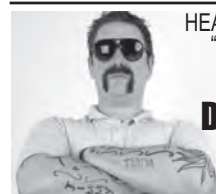
Press release, 9 Jan 2007
Marie Andrews,
Member for Gosford

★ WHAT'S ON ★

SEASON 2008

Phone the Box Office now to receive your Performance Season 2008 booklet.

14 new flavours in entertainment.



HEATH FRANKLIN'S
"CHOPPER" in

**MAKE
DEADSHITS
HISTORY**

12, 13 & 14 February 7:30pm

As seen on Network 10's

The Ronnie Johns Half Hour,
Chopper head-butts his way on stage, tackling an issue bigger than world poverty or global warming - eradicating the terminally stupid!

CULTURAL LABORATORY

15 February 7:30pm

The Lab returns with a great line-up of story telling, music, drama, film and our unique open forum & Supper. Stuart Smith will appear to talk about the return of Jon English's "Paris - the Rock Opera" in 2008.

WOY WOY LITTLE THEATRE present

DEATH TRAP

From 22 February

Two-thirds thriller and one-third devilish comedy.

Tix on Sale 8 Feb. Ph: 4344 4737

GOSFORD CITY COUNCIL presents

SHORT & SWEET

The bite-sized theatre with attitude will return in July 2008. Start working on your 10 minute plays as we will shortly be calling for scripts. More information

www.laycockstreet.com/sns2008.html

Sponsored by

Peninsula News
Community Access

BOX OFFICE 43 233 233

Peninsula Theatre - Cnr McMasters & Ocean Beach Rds, Woy Woy is proudly owned & operated by Gosford City Council

Local draws raffle

The winning tickets for the Gosford Hospital Auxiliary Christmas raffle were drawn by Umina resident Mr Bruce Sharpe at Gosford Hospital main entrance foyer on December 20.

First prize, a rocking horse, went to ticket number 21757 while the second prize, a beauty pack, went to ticket number 21449.

The prizes were donated by Mr Sharpe.

The auxiliary thanked all who supported the raffle.

It stated that all monies raised would help to buy equipment for the play area in the Children's Ward.

Press release, 8 Jan 2007
Alan Shaw,
Gosford Hospital Auxiliary

JANUARY BRACKETS JAM DÉ JAH GROOVE and the BIG JAM



Featuring the Groovers hot off their "Rockbottom Jackpot Tour"

PLUS THE JESSE MORRIS BAND
and talented young locals STOLEN MEMORIES
Brackets walk-ons, drum jams and great food.
also announcing great new plans for CoastFest 2008
18th January - Gosford Showground
doors open 7pm - tickets \$20 CFmembers \$15
Coastfest
fund-raiser 2008
memberships available on the night

BeanFarm Studio eco-friendly promotions - printed on 100% recycled paper.0243682032

Sponsored by

Peninsula
Community Access

News

Art Exhibition by
Judith Hoste of Umina Beach
NATURE'S MAGIC
at the Rogue Gallery with a mix of works
depicting the beauty of nature around us

394 The Entrance Rd, Long Jetty
from 24th January - 31st January
with the official opening on Australia Day - 2pm
Gallery Hours
Monday - Friday 9am - 5pm
Saturday 9am - noon
Phone 4334 1818 for more info

Classifieds

Incorporating a **trades directory** and **public notice** advertisements
Peninsula News Classifieds aims to help community groups and businesses reach the Peninsula community at the lowest possible price.

ADVERTISEMENTS cost only \$25 plus GST for 5 cms, and will be working for you in your local community for **TWO WEEKS**
Phone: 4325 7369
Fax: 4325 7362

E-mail: mail@peninsulanews.asn.au

Antennas

A Better Picture
Antenna & Digital Installations & Tuning
New home specialist
Credit cards OK
HAYWARD VIDEO
All areas
Gosford 4323 6367
Woy Woy 4344 4414
Warnervale 1800 244 456
0412 685 555

Building Services

NELSON'S MAINTENANCE SERVICES
• Pipe and Cable Location
• Underground Boring
• Pipe and Conduit Trenching
• Jackhammer Excavation
• Concrete Cutting
Obligation free quote
Call Tony
0402 551 067

Computers

Throwing away old computers or computer hardware?
Contact Lyle on 0431 068 801 for recycling.
FREE pickup!

Electrical Appliances

Repairs and Service to vacuum cleaners, washing machines & fridges - Large range of vacuum cleaner bags.
JAYARS APPLIANCE SERVICE
 
13-15 Mutu St - Woy Woy
4342 3538 or 4344 3384
Approved Service Centre for over 15 Companies

For Sale

Spanline Patios, Glass and Screen Rooms, Carports & Wall Cladding as seen on TV
Lic. 83737c
PICTON BROS SPAN LINE
Gosford 4324 9300
Charmhaven 4393 3397

COFFS HARBOUR For Sale

Modern 2 BR Villa Built 2003
Over 55s Open plan.
SLUG (remote), HUGE pool
Gas BBQ, Rev Air, Security Gate, Close to three big bowls clubs and shops. For sale by owner, no agents therefore you save commission not added on to price only \$305,000 on a rising market.
Call owner on (02) 6652 7942

Lawns & Gardens

 **Green Frog**
Lawns & Garden Care
• Lawn mowing • Gardening
• Gutter clearing •
• Garden Minding •
Anything else? Just ask!
• Free quotes • Pensioner discounts • Friendly affordable service by a Peninsula local
Ph: Ryan 0415 350 453
grnfrog@optusnet.com.au

Jamie's Lawn Mowing

Pensioner Discounts
Match or Better any reasonable quote
Professional Work
Gutter Cleaning and other odd jobs
0488 268 166

Painters

A1 PENINSULA PAINTERS

Improve your home by thousands\$\$\$
No job too BIG or too small



Free quotes
Pensioner Discounts

Phone Ryan 0410 404664

Pensioner Accommodation

Aubrey Downer Memorial Orange Homes
Point Clare Retirement Village
Self Care Unit available
\$118.30/week
Conditions Apply
Ph: 4324 2068
Business Hours

Plumbers

Graf Bros P/L

Bruce Graf Proprietor
For your plumbing needs contact Bruce
Ph: 4341 7369
Mobile: 0412 438 868
Lic No. 10166

PRIDE PLUMBING

- All Plumbing & Drainage
- Hot Water Repairs & Replacements
- Gas Fitting & LPG
- Bathroom & Kitchen Renovations
- Blocked Drains/Electric Eel Service
- Guttering & Downpipes
- Water Tank Specialist
- Backflow & TMV Specialist

0409 180 596

Public Notices

Woy Woy Peninsula Lions Club
Sunday, 27 January 8am to 1pm
Great variety of stalls ~ BBQ, Tea & Coffee. Vendors Welcome ~
\$10 per car
Cnr. Ocean Beach Road and Erina St. Woy Woy
Always Last Sunday
(Except December)
More Details...
Elmo 4341 4151 - Hope 4369 8707

Central Coast Bush Dance & Music Association

Experience Folk Music at its best
Top Bands - loads of fun at our January 26 Australia Day Dance with
The D-Cendants
East Gosford
Progress Hall @ 7.30pm Henry Parry Drive

Enq: 02 4342 5333
Admission \$15 incl. supper
Folk Fed Affiliates & Pensioners \$12,
Children 12 to 18 \$8
www.ccbdma.org for more information

SMART

Recovery AUSTRALIA

Are you worried about your drug or alcohol use? Do you want to regain control of your life?
Try SMART - Self Management and Recovery Training
A facilitated peer managed self help group that assists You to recover from alcohol and drug abuse
Every Friday 10am - 11.30am
Peninsula Community Centre, Mc Masters Rd Woy Woy
Ph 1800 422 599
Bookings are not required

Pumps and Bores

Bore water pump & spear point installation, maintenance, repairs & modifications.

PVC pipe & spear points installed that **never need cleaning.**

Ph John Woolley Lic. No. DL1664
Phone: 4342 2024

Bores and Spears

Install high quality pumps and maintenance free spears, existing systems reconditioned, all work guaranteed.

Ph: Warren Greenway
Ph: 4341 7736 Mob: 0408 225 390
Lic No. DL1960

Pure Value

Advertise now in this space for only \$25 + GST.
At such a low price, how can you resist?
Call 4325 7369

Removals

A MAN WITH A VAN
From \$45 per hour
New 6.5 tonne Pantec with tailgate lifter
\$65 per hour
2nd or 3rd man available
www.amanwithavan.com.au
0413 048 091

Security

Alarm Systems

For a full range of security services, try the locals
ALARMS PATROLS - GUARDS ALLPOINT SECURITY
Ph: 4322 1713
Fax: 4322 1753

Services Offered

Book Keeping Services

All services including BAS, Payroll, Super. Qualified & Experienced at \$30 per hour.. Your office or mine.
Tel. Keith Stockley
9456 1743 or 0403 676 653

Tiling

Tiling Plus

To suit your taste, lifestyle and budget. Wall & floor tiling plus landscaping, painting, household repairs & property maintenance
Competitive rates
Pensioner discounts
0439 589 426

Tuition

Violin, Keyboard, Piano, Mandolin, Drum and Guitar lessons available

All Ages welcome.
Gain confidence and achieve results
Frank Russell

4342 9099 or 0417 456 929

TODAY'S SCOUTS - NOW IS THE TIME TO JOIN



2008 THE YEAR OF THE SCOUT

www.scouts.com.au
1800 SCOUTS

Proudly supported by the



Australian Government





Performers at the Peninsula School of Music end of year concert





Photo Ron Flight

Finalists in the 2007 Long John Old Mal,
Hayden Emery, Bryce Williams, Michael Baker, Gerry Halliday.

Malibu club holds annual comp

The Ocean Beach Malibu Club held its annual Long John Old Mal day on December 2.

Twenty-ninememberscompeted in the club's last competition of the year.

After two rounds of competition, eight people were chosen to go through into the semi-final.

Garry Halliday, Michael Baker,

Hayden Emery and Bryce Williams managed to make it into the final round of the competition.

Hayden Emery was eventually crowned mal champion.

Following the competition, the club held its presentation night on December 15.

Calyn Wilkinson was awarded club champion of the year, while

Madison Cook took out first place in both the ladies and juniors titles.

Kai Ellice-Flint gained first place in B grade of the club and Calyn Wilkinson gained first place for A grade.

Press release, 9 Jan 2008
Craig Coulton, Ocean Beach Malibu Club



Before you book your next display advertisement in the local telephone directory look at this for BETTER VALUE

We will give you a display advertisement that's 50% larger for the same price in EVERY EDITION of Peninsula News (not just once) for a Whole Year! Why be with all your competitors on the Coast when you can stand out in your local area and be seen week in and week out for twelve months?

That's right, 50% larger and in EVERY EDITION for a year at the same price What's more, you can change your advertisement as often as you like CALL NOW and start receiving the benefits immediately. No Upfront Payments - Pay as you go

Ducks Crossing publications

Ph: 4325 7369 Fax: 4325 7362
Email: mail@peninsulanews.asn.au
website: www.duckscrossing.org



Umina Bait & Tackle PTY LTD

CHEAP BAIT

Large Range of BAIT
Excellent Range of TACKLE

FRESH GREEN WEED

Open 7 Days

Daiwa SHIMANO Abu Garcia SILSTAR AVEY

LESLIE STREET, UMINA (02) 4341 1686



Grant funding for emergency equipment

The Patonga Beach Progress Association will receive a grant of \$7400 from the Central Coast Regional Organisation of Councils, according to a recent report.

The council's disaster recovery funding assessment committee approved funding for the association.

However, the committee knocked back applications from Peninsula community group Penlink totalling \$30,500.

The Patonga progress association said that \$7400 in funding would provide the Patonga Emergency and Disaster Centre with "vital equipment" which would support the region in times of disaster.

The association stated: "Patonga experienced a disaster in 2005 when fires cut off the region."

"The storms again required the Patonga Emergency and Disaster Centre to activate and provide assistance to the region."

The committee noted that Patonga was difficult to access and that it could be "easily cut off during a disaster".

"The Patonga Beach Progress Association has provided effective support to the community in the past and the additional equipment will be an effective use of the fund."

The committee said the funding was supported by objective 4.3 which stated the funding should "support and resource community groups to undertake projects and provide activities to increase community preparedness and resilience for emergencies".

The committee rejected applications from the Penlink community group for grants of \$1000 and \$29,500.

Penlink had requested \$1000 funding for the construction of a website "in order to further the aims of the organisation".

"The development and promotion of a Penlink website is seen as a vital stage in the development of our communications infrastructure which will enhance the organisation's presence and effectiveness in the community," according to its application.

The committee stated that it "did not feel that funding the website would greatly increase community preparedness and resilience for emergencies and therefore was not an efficient and effective use of fund monies".

Penlink also asked for \$29,500

to host a community festival early in September 2008 to "celebrate community spirit, integration, and belonging".

It stated: "It is an opportunity to bring together in a holistic way, many of the great support services, community groups, cultural groups and emergency services to create a dialogue with the community and between groups."

"It would serve as smorgasboard of information, workshops, activities and entertainment that could involve the whole community and leave a tangible legacy of connections, understanding and hope."

The committee considered that the primary aim of the project was to support a festival that was intended to be conducted annually that was "not primarily focussed on a strategy or action that will lessen the social/health impacts of the storm on affected communities or individuals".

The committee stated that it was also concerned that funding the project may give the community false expectations that the festival would be funded each year.

It stated: "The committee also noted the cost of the project and that a substantial amount was to be used to employ an event coordinator."

"The committee did not feel that funding this project would greatly increase community preparedness and resilience for emergencies and therefore was not an efficient and effective use of funds."

Council agenda RO.003, 8 Jan 2007

A State Government plan to reduce development contributions could "pose a threat" to projects such as foreshore maintenance, according to Gosford Council's acting director of environment and planning Mr John Parkes.

Mr Parkes said that parks, libraries and childcare centres planned for the Gosford Local Government Area were "under threat" because of the plan.

"Not only is the Government planning to slash the amount of funds councils can collect in development contributions, but it is also going to dictate what the remaining funds can be used for," Mr Parkes said.

"We have worked out we could lose substantial funding planned for crucial basic infrastructure like parks, road improvements and community centres if the Government's changes proceed."

"But until the legislation is released, it is not known exactly what projects will not proceed."

Mr Parkes said that the findings of the Local Government Inquiry, released in 2006, revealed councils across the State are already facing a \$6.3 billion infrastructure back log.

Gosford mayor Cr Jim Macfadyen echoed calls by the Local Government and Shires Associations of NSW for the Government to halt implementing the changes.

"Cutting development

contributions would not only threaten planned facilities in new areas, but cause overcrowding of, and reduced access to, existing facilities," Cr Macfadyen said.

"Councils are already financially stretched and not in a position to

pick up the shortfall.

"We're calling on the Government to freeze implementation of the changes so that all of the impacts on NSW communities can be properly assessed."

**Press release, 2 Jan 2007
Kate Carragher, Gosford Council**

PCYC
POLICE & COMMUNITY YOUTH CLUBS

'PUMP' GYM

No Frills/Hassles or Contracts

Take advantage of our low cost rates and save

Weights ~ Boxing

Circuit Boxing

General Circuit

'PUMPing' ('Rocking') Gym on Monday Nights

Our Gym is for use by people of all ages

Monday to Thursday	9:00am-12noon	3:00pm-8:00pm
Friday	9:00am-12noon	3:00pm-6:00pm
Saturday	9:00am-12noon	

To join PCYC

\$5 for under 18s or \$10 for over 18s

Single Gym Session

\$5 for under 18s or \$7 for over 18s

Weekly Gym Session

\$10 for under 18s or \$15 for over 18s

Monthly Gym Session

\$30 for under 18s or \$50 for over 18s

PENSIONER CONCESSIONS AVAILABLE FOR OVER 65's

You can find out more by speaking to Gym staff, to staff at the front counter or by phoning us on

Ph: 4344 7851 – UMINA PCYC

Osborne Avenue, Umina Beach

Sponsored

by

Peninsula
Community Access

News



Laycock Street Theatre, proudly owned by Gosford City Council presents



2008 AUDITIONS

3rd February - Auditorium - All Genres

17th February - Don Craig Room - Soloists/Comedy Acts, etc

23rd February - Auditorium - All Genres

All auditions by APPOINTMENT ONLY

Phone the Box Office for more info or to book your audition on **43 233 233**.

YIPA is now in its 17th year. Over \$12,000 in scholarships will be awarded in 2008. YIPA features performances in all arts genres, including comedy, drama, vocal, instrumental, soloists and ensembles, bands and orchestras, and all forms of dance.

Performers must be between 12 and 21 years old on the concert dates.

CONCERT DATES: 3 to 7 JUNE 2008

Booking Form/Info Sheet can be downloaded from www.laycockstreet.com/YIPA.html

For the latest news on what's happening on the Peninsula see....

www.PeninsulaNews.asn.au

● News ● Education ● Sport ● Arts ● Health ● Forum ● Peninsula Diary ● Web directory ●

The Peninsula newspaper's website, a comprehensive collection of editions published to date

Campbells Home Hardware

Open
7 Days

HOME

The Proper Hardware store with real people

**Treated
Pine
Logs
Sleepers
Lattice
Cladding**



**6 LITRES
DECKING
OIL** (natural)

\$58.95

- manufactures by wattyl
- FREE tinting also available

A huge range of paint and accessories

182 Blackwall Road, (at the lights) Woy Woy

Phone: 4341 1411

Fax: 4343 1355

100% Locally owned



100% Locally staffed

BLACKWALL MOWERS & CHAINSAWS

Ph: 4343 1624 or 4341 1671 **NOT JUST A MOWER SHOP!!**
Fax: 4344 4181

www.blackwallmowers.com

72 Memorial Ave, WOY WOY
NSW 2256

Take a break with Masport

Simply purchase a qualifying Masport
lawn mower from Blackwall Mowers &
Chainsaws to receive one free night's
accommodation for two in your choice of
many selected hotels around Australia!*

www.masport.com.au

*Important - Terms and Conditions apply. Customers must qualify for this offer

