

Council reinstates height limit

Gosford Council has reinstated height limits in the Ettalong and Umina character statement following a lengthy debate at council's meeting of Tuesday, September 27.

At council's previous meeting, the council decided to remove height limits from a development control plan (DCP) affecting the Ettalong and Umina business area.

Crs Robert Bell and mayor Cr Malcolm Brooks were not in attendance at the meeting at the earlier meeting.

Crs Terri Latella, Craig Doyle and Chris Holstein gave notice to rescind the motion because the two councillors were not at the meeting when the item was considered by council.

The councillors stated in the notice that they wanted to allow Crs Bell and Brooks to consider the recommendation submitted by council.

Cr Latella moved the motion to reinstate the three storey component of DCP 159.

Cr Jim Macfadyen and Cr Trevor Drake said that other areas did not have height controls in their character statements and questioned the need to include height controls for two specific areas.

"Not one other character statement refers to any height," Cr Drake said.

"There is a lack of consistency when two of them have a maximum of two or three stories."

In answer to a question, Council's director of environment and planning Ms Colleen Worthy-Jennings said the height limits were "not due to the submissions received from the public".

Cr Malcolm Brooks said: "Council resolved that there be a limit of three stories on the DCP, and that was accepted by a majority of the

community at the time."

Cr Brooks agreed with the rescission motion, stating he thought the change should have gone out for public exhibition.

"If council is going to alter it, then it is council policy, that if you are going to intensify the development, you must go back out on public exhibition," Cr Brooks said.

Cr Holstein said that the rescission motion due to two councillors not being present was a good reason to rescind the motion and allow the councillors to have some input into the debate.

He said he wanted "to at least hear from all the councillors who were present when the decision was made" to include the height limit in the DCP.

Cr Doyle spoke in favour: "What it boils down to is 'what is a character statement', and that's what it's all about."

"What makes their environment a special place? What is their vision for that area?"

"Certainly, on the Peninsula, the vision was certainly was low rise.

"They did have a vision of no more than three stories.

"That's why they gravitate to that area.

"We had three councillors that resided on the Peninsula who worked very hard to see that the Peninsula was protected.

"I don't think it's wise to start undoing those things, at least without going back to the community."

"If one of the other (areas) thought it was good to have height limits, we would have put them in, but it wasn't an issue.

Cr Peter Hale said that "staff pointed out in their response that the character statements do not set height limits".

Lyle Stone, September 27
Council agenda NM.21,
September 27

Retirement village fete

Peninsula Village Limited will be holding a fete on Saturday, October 8.

The fete will include cake stalls, trike rides, an auction, face painting, plants, pick a doll, Devonshire tea,

arts and crafts and a photographic competition.

The event will run from 8am until 2pm.

Newsletter, September 20
Umina Public School



The Ettalong foreshore

Minister yet to sign foreshore plan

The Ettalong Foreshore Plan of Management, approved by Gosford Council in May two years ago, has still not been signed off by the Minister for Lands, a departmental media officer has revealed.

The draft plan may not be signed by the Minister until early next year, according to the Department of Lands representative.

The Department recently commenced a review of the plan

for the foreshore, after concerns were raised by the community, the representative said.

The department met recently with Gosford Council and other stakeholders including the Department of Infrastructure, Planning and Natural Resources, representatives from Ettalong Beach Memorial Club, Peninsula Dune Care, the Ettalong Beach Heritage Committee and the Peninsula Chamber of Commerce to discuss issues surrounding the

draft plan.

The representative stated that the department advised the meeting it would review the draft plan, including supporting studies, and seek public comment before proceeding to adoption by Minister Mr Craig Knowles.

The process is expected to be completed by early next year.

Lyle Stone, September 28
Susan Tracey,
Department of Lands

Five arrests after fight

Five people have been arrested and charged following a fight at Ettalong, involving a baseball bat.

A 37-year-old Woy Woy man was allegedly kicked, punched and struck with a baseball bat after four people intervened in an altercation outside a house on Barrenjoey Rd at 4.15pm on Sunday, September 25.

The man sustained serious

injuries, including a possible fractured cheek, bruising and soft tissue damage.

A six-year-old girl also suffered minor injuries in the incident.

Police from Brisbane Water Local Area Command attended the scene and arrested five people.

A 41-year-old Liverpool man was refused bail to appear in Gosford Local Court charged with assault, assault occasioning actual bodily harm and use weapon to commit

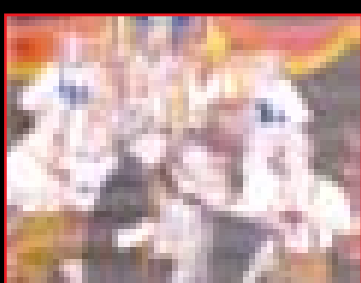
indictable offence.

A 42-year-old Woy Woy man and two Ettalong Beach women, aged 39 and 44, were also charged with assault-related offences and conditionally bailed to appear in court next month.

The injured man will also appear in court at a later date, charged with unrelated offences.

Press release, September 26
NSW Police Media

THIS ISSUE contains 61 articles. Read 35 more at www.PeninsulaNews.asn.au



FRIDAY 14TH OCTOBER
'OKTOBERFEST'
Tickets \$12.50 ea at reception
Showtime 8.00pm

Everglades Country Club, Dunban Road, Woy Woy Phone: 4341 1866

Information for members and their guests

News



A traffic signal emergency vehicle parked in front of the Brisbane Water Dr and Blackwall Rd intersection, after traffic lights stopped working on Monday, September 19

Concert of hymns

The Ettalong Baptist Church will be holding a Hymns That Live concert on October 9.

The event will feature guest artists, the Ettalong Baptist Church Choir, choir leader and solo pianist Ms Joan Edwards and organist Ms Graham Wilkins.

The event will start at 2.30pm at the Ettalong Baptist Church, Barrenjoey Rd, Ettalong.

For more information, contact 4341 4524.

Press release, September 25
Ettalong Baptist Church

Peninsula News Community Access

Peninsula News is owned by Peninsula Community Access Newspaper Inc., an incorporated, non-profit association. Its aims include providing a viable, non-partisan news medium and forum exclusively for the Peninsula and developing a sense of community on the Peninsula.

Association President and Editor: Mark Snell

Commercial operator: Cec Bucello for Ducks Crossing Publications

Journalist: Lyle Stone **Graphic design:** Justin Paul Stanley

Contributors: Stuart Baumann, Kim Trenerry, Paul Rogers, Craig Stone

Committee: Carolyn Carter, Stephen McNamara, Mark Snell

Declaration of interests

Honorary editor: Mark Snell

Owner and managing director, Open Windows Consulting Pty Ltd

Convenor, Burrawang Bushland Reserve Committee

Vice-president, Australian Conservation Foundation Central Coast branch

Chairman, Equilibrium Community Ecology Inc

Commercial operator: Cec Bucello

Proprietor Mail Order Mall

Vice President Troubador Central Coast Inc.

Coastfest Director

St Albans Folk Festival Committee

Woy Woy Australia Day Organising Committee

Next Edition: Peninsula News 128

Deadline: **October 12** Publication date: **October 17**

Contributions

Letters to the editor and other contributions are welcomed and should be addressed to: Peninsula News PO Box 532, Woy Woy 2256. Contributions should be in Word format sent via email to: mail@PeninsulaNews.asn.au, on disks or by handwritten letter if these facilities are not available to you. Include the date, your name, address and phone numbers. Name and Suburb will be published. Anonymous contributions will not be included. Submissions may be published in edited form. All accepted contributions also appear on our website.

CONTACT US AT:

Office: 2a Kateena Ave Tascott

Phone: 4325 7369 **Fax:** 4325 7362

Mail: PO Box 532, Woy Woy 2256

E-mail: mail@PeninsulaNews.asn.au

Website: www.PeninsulaNews.asn.au

Legal responsibility for editing, printing and publishing in

Peninsula News is taken by

Mark Snell of Woy Woy, for Peninsula Community Access Newspaper Inc.

Ducks Crossing Publications, a subsidiary of Mail Order Mall, is the commercial operator of Peninsula News

Printed by MPD, Maddox St, Alexandria

Pump-out plan timing open

The proposal for a marine pump-out facility at Hardys Bay may not go on public exhibition until November, according to Gosford Council's director of city services Mr Stephen Glen.

Mr Glen stated in a report to council that council's natural resources officer has advised that the exact timing was still to be

determined.

The Review of Environmental Factors recommended that a recreational usage survey be undertaken for the wharf and that the results of this survey be exhibited with the review, he said.

"It is anticipated that the survey document will be prepared and distributed during September, analysed in late October and a

report prepared, to accompany the exhibition of the review, by the beginning of November," Mr Glen said.

Mr Glen was responding to a question from Cr Jim Macfadyen on August 23 for information on when the proposal would go on public exhibition.

Council agenda Q.123, COR.32, September 27

Interior decorator in Ettalong

Ettalong now boasts its own interior decorator and home furnishings maker with the opening of a new business.

Texture in Design opened in the Ettalong Arcade in June and is run by Ms Deborah Wells, a decorating seamstress from Tasmania.

Ms Wells specialises in custom-made home furnishings ranging

from cushions to ottomans and day beds.

Ms Wells uses suede, leather and a wide variety of fabrics from fabric suppliers Warwick and Kirby.

"I like to go to people's homes and make modern things to fit awkward places," Ms Wells said.

Ms Wells has 21 years' experience and has moved to Booker Bay from Tasmania with

her partner and two children.

"We love it here and we'll never go back to Tasmania," Ms Wells said.

Ms Wells plans to develop the business to be able to rent modern furnishings to people to use in places that would otherwise be empty while they are waiting to be sold.

Cec Bucello, September 15

Another new business

July saw the opening of yet another new business on the Peninsula.

Situated on the corner of Blackwall and Victoria Rd, Woy Woy, the new business sells secondhand furnishings.

Operating under the name Trade

Interiors, the business was started by Woy Woy resident Ms Janice Smith.

Ms Smith previously operated the Point Clare Fabric and Curtain Shop and before that she had an antique shop in Hornsby Heights.

Janice purchases her goods

from a wide variety of places and also takes curtains, soft furnishings and small furniture for sale on consignment.

Ms Smith's range varies from modern to antique, aiming to satisfy a large variety of tastes.

Cec Bucello, September 13

Complaint about dog

Empire Bay residents have written to Gosford Council complaining of a nuisance dog on Wards Hill Rd.

Council received a petition with 10 signatures from residents of Samaldo Caravan Park about the behaviour of a dog in an nearby

property.

The petition stated that the dog constantly barked all night keeping everyone from sleeping.

The petitioners asked for council's assistance in resolving the issue.

Council agenda P.69, September 27

Company wins drain tender

Saratoga company Zaniil Pty Ltd has won the tender for stormwater drainage on Patonga Dr, Patonga.

The work is to supply and install a 167m drain with associated inlet pits, pavement restoration, surface

dish drain reconstruction.

The construction period is 10 weeks and the work is scheduled to start this month.

Council agenda COR.29, September 27

Correction

In the last edition of Peninsula News in the article Agatha Christie Play at Theatre, it was incorrectly stated that Penny Dilworth plays the character of Benny the Housekeeper.

Penny Dilworth actually plays the part of Mrs Warwick, whose son is murdered.

Jo Stanley plays Benny the Housekeeper.

Lyle Stone, September 26

There is a special offer 12th October

ionic Hair Straightening Demo

Get your hair a really smooth, shiny, soft, straight, smooth!

You're looking, more confident & hot. Our qualified Technicians use advanced technology. The latest technology in permanent hair straightening - **ionic Thermal Straightening!**

Call now for a special offer. Don't miss the chance to get a straight, smooth hair!

Chloe & Co Beauty
100 South Street
Tel: 4325 7369

Subscribe!

and enjoy the convenience of having **Peninsula News** mailed to your home

YES ! Please send:

12 fortnightly issues for \$20

OR

26 fortnightly issues for \$40

A subscription to Peninsula News now entitles subscribers to membership of Peninsula Community Access Newspaper Inc., an incorporated, not for profit, association. Please tick if you would like to accept membership

OR

Please find enclosed \$5 for Membership to the Peninsula Community Access Newspaper Inc

Name _____

Address _____

Cheque, money order or credit card details must accompany order

Send to

Mail Order Mall
PO Box 532,
Woy Woy 2256



Glen Alston at the Ocean Beach Malibu Club and the Shelly Beach Malibu Club annual interclub competition

Dance parties at PCYC

The Umina Beach Police and Community Youth Centre (PCYC) will be holding several events for teenagers during the coming months including dance parties and entertainment nights.

The PCYC will hold Pump dance parties on October 14, November 11 and December 9.

The dance parties are for people aged 10 to 16 years old and run from 7pm until 10pm.

The event includes a 6000-song playlist and features a state-of-the-art sound, audio and lighting system.

Prizes are on offer during the night.

No drugs, alcohol, gum or

passouts will be allowed at the event.

Tickets cost \$10 and include a drink and a bag of chips.

The event is held at 101 Osborne Ave, Umina Beach.

The PCYC will also be holding Youth Entertainment Nights on October 28 and November 25.

The events will include movies, big screen X Box, a barbecue, pool, air hockey, competitions and prizes.

The event will run from 6pm until 9pm.

Entry is free and passouts are allowed.

For more information, contact 4344 7851.

Press release, September 21
Tim Keogh, Umina PCYC

Fast Ships gets two-year lease

Gosford Council has resolved to enter into a two-year lease with Fast Ships Limited for use of the Ettalong Foreshore for a ferry wharf and terminal.

The lease is subject to council and Fast Ships Limited entering into a Development Deed of Agreement.

The lease will have two 19-year options.

It will cost \$12,000 annually, to be reviewed in two years.

The lease will allow the council to terminate the lease if work on the wharf and terminal buildings is not started within one year of the signing of the documents "or such longer period at the discretion of the council".

The infrastructure was to be completed within two years of the signing of the documents, or again at such longer period at the discretion of the council.

Fast Ships Ltd must also make

satisfactory arrangements to secure a vessel and berthing facilities at Circular Quay or other suitable Sydney Harbour sites within two years.

The company must show a business plan, which provides for the fast ferry to commence operations within two years.

Fast Ships representative Mr Matthew Wales told Gosford Council at its September 27 meeting that the only surety the company could give was that if the lease was not signed "the service may not actually proceed as this was a condition of consent as given by council".

He said the company was now in a position to seek a suitable ferry that was coming up for auction in Japan later this year.

Mr Wales said that the company had been in ongoing discussion with NSW Maritime for berthing rights in Circular Quay and King St wharf.

Peninsula Dunecare representative Ms Margaret Lund spoke at the meeting against the leasing of the foreshore.

"You must have a financially viable plan available before you sign anything, particularly a lease," Ms Lund said.

"Until now this firm has had no boat, no berthing rights, and no financial backer.

"It's unviable, why is council pursuing it?"

"You are going to end up with this large infrastructure not being used.

"The public is going to lose a lot of its public land.

"Why not wait for the Ettalong Foreshore Plan? Why not wait for Sepp 71 (Coastal Policy)?"

"Please council, be a responsible council and, if perhaps you have to, give an option but do not give a lease."

Lyle Stone, September 27
Council agenda COR.28,
September 27

INTEREST RATES A BIT HEAVY?

If you're finding your current finances are a bit of a burden, now is the ideal time to consider loan consolidation or refinancing.

TDP Financial Services was established as an additional service to clients of Tonkin Drysdale Partners and can help secure a refinance package to suit your specific needs and at very competitive rates.

So, if you want to consolidate or refinance your current loans, call Graham Kenney at TDP Financial Services, and lighten the load.

TDP Tonkin Drysdale Partners | **Financial Services**

Telephone: 4344 2001 Fax: 4344 1401
Email: gkenney@tdpfinancial.com.au Website: www.tdpfinancial.com.au

**Remember when
gay was happy & an
icy pole was 5 cents?**

Forum

Beautiful path for all

Thank you for allowing me to respond to the letter in Forum by Michelle Ortlipp of Koolewong.

The Gosford Council is constructing a shared path from Gosford to Woy Woy, perhaps 90 per cent completed.

The last part involves a separate narrow bridge alongside the car-bridge and the remaining path to the Woy Woy wharf.

This beautiful path is for pedestrians and bike riders of

Forum

all ages, like you and me, mostly motorists and part-time cyclists.

There has been no narrowing of the channel, and hardly any of the mangrove plants have been disturbed.

The path has been developed on an already-decaying foreshore.

Last Sunday, at least 100 bike-riders used that path to Gosford and our cycle club has regular rides from Gosford to Woy Woy and beyond.

One has to ride that path and be amazed at the numbers of walkers (with or without dogs) and children on tricycles using this path skirting the shore.

May I suggest Michelle to join us on her bike for one of our Sunday rides?

It may open her eyes to a different world.

We are looking forward to a safe and peaceful ride on this wonderful path, constructed by the Gosford Council, not for them, but for us.

Peter Frylink, Umina Beach

Progress is quite different

It has been reported in local papers that the Council has voted to remove any building height restrictions in Ettalong and Umina.

I attended a well-attended community meeting about this issue at Ettalong a few months ago and came away convinced that this is not what the community prefers, far from it.

They don't want another Gold Coast.

There were some people there who expressed the grossly erroneous view that "high-rise equals progress", something that "we need to have".

As one who lived some 20 years on the Far North Coast of NSW, let me assure you that the opposite is true.

Thanks particularly to the local Greens, the message that "high rise equals progress" was consigned to the dustbin there and sustainable development plans, up the three stories maximum, was introduced.

"Progress" now means something quite different!

That region is now a model for the rest of Australia, although every

Forum

Letters to the editor should be sent to:

Peninsula News
PO Box 532,
Woy Woy 2256
or

mail@PeninsulaNews.asn.au
See Page 2 for
contribution conditions

attempt is made by developers to revert to their old ways and values as the corrupt behaviour in Tweed demonstrates.

From the behaviour of the pro-developer Gosford Council, we learn that local government needs to be strengthened by paying local councillors so that more independent citizens can represent the community and their current values.

I will support the petition to the NSW Local Government Minister, by Bryan Ellis (Save Our Suburbs Central Coast), to initiate an inquiry into the conduct of this council.

Klaas Woldring, Pearl Beach

Show disapproval of draft strategy

A recommendation is being made to Gosford Council to adopt the draft Peninsula Urban Directions Strategy on Tuesday, October 4.

The Peninsula Community Association sees this as an attempt to introduce high-density population growth to the Peninsula, even though it is believed to have one of the highest population densities on

Forum

the Central Coast.

Consultation between Gosford Council and Peninsula residents has amounted to meetings comprising approximately 50 people out of a population of 34,000.

This strategy involves increased high rise for CBDs with no plan for

infrastructure to support it.

There is currently a lack of community open space.

Adoption of PUDS will worsen this situation for the Peninsula Community.

I urge you to attend Tuesday night's meeting at Gosford Council to show your disapproval of this plan.

Sheelagh Noonan, Umina

Building heights were not an issue

Regarding "Height Controls Removed" (Forum, September 19), once again Mr. Bryan Ellis doesn't let the truth get in the way of good story.

As a former Gosford councillor, let me enlighten Mr Ellis as to what actually happened rather than the sanitized version he dishes up for the media.

The Urban Design Framework workshops were conducted by Sydney consultant Brett Newbold in preparation for Gosford Council's draft Character Development Control Plan (DCP) for the Peninsula area.

I attended these meetings and I can categorically confirm that building heights were never

Forum

discussed at any of those meetings, nor was it an issue.

The draft character statements were then placed on public exhibition for comment and, again, height was never an issue in the submissions returned to Council.

In relation to Ettalong Beach and Umina Beach, the full report came to Council for ratification on March 26, 2002.

It was at this council meeting that several councillors decided to change the character statements of their own accord.

These changes were quite dramatic and included the statement that "the height of buildings should vary up to three storey in appearance" and deleted the words "penthouse" to be

replaced with "top storey".

These changes were supported by eight of the councillors.

However, former Cr Tony Sansom and I voted against the changes as it was our view that such major alterations should have gone back out onto public exhibition for comment and these views were never expressed during the earlier consultation process.

So when Mr. Ellis talks about abuse of powers, it was on that night that we witnessed it first hand how Council fails to listen to the community but we didn't hear a word from Mr. Ellis then.

I congratulate both Cr Maher and Hale for having corrected the character statements so that they now actually reflect what the community workshops wanted at the time.

Debra Wales, Umina

Pump out will spoil Hardys Bay

It is inappropriate and unsanitary for a marine vessel pump-out and slops hopper facility to be placed on the picturesque wharf on the south side of Hardy's Bay.

This is a place where families picnic and children fish.

Given that pump-outs are a

Forum

necessary evil, and that in the not too far distant future all marinas will be required to install them, and there's one just around the corner, why "jump the gun" and spoil this peaceful area?

Marilyn Cartmill
Killcare

Cat went missing

Per medium of your paper, I request a mention with regard for my missing cat.

We moved a short distance from Kourong St, Ettalong, to Umina.

After three days our cat, a desexed cross white chinchilla, Sugar sadly went missing.

All avenues have been pursued to find her.

Forum

Should a family have found her, I would be reasonably happy to allow them to keep her but would be much happier to know she was OK.

Please call 02 4344 7442.
Marge Cleere, Umina

More Forum Page 15

Shop Local Save Petrol

We have lots in for Spring

Organic Garden Soil

6 bags for \$25

ETTALONG

Cnr. Uligandi St & Broken Bay Rd
4344 3777

AFFORDable
Computer Services

- Computer Upgrades
- Computer Repairs
- Software Installation
- Internet Help
- Virus/Adware Removal
- Website Design
- Computer Training
- No call out fee
- Pensioner discounts

Ph: 4325 5150

Mob: 0431 18 18 18

Email: acomputer@optusnet.com.au

LPG GAS Conversions

Peninsula Car Repairs

26 Alma Ave Woy Woy

4344 4422

Peninsula News
Community Access

is printed on 100% recycled paper products, even the ink is made from vegetable matter.

So when you're done reading this paper please recycle it or give it to someone else to read

Planners criticise public comments

Gosford Council planners have strongly criticised public submissions and comments made about the draft Peninsula Urban Directions Strategy.

In a report for the council meeting tonight (Tuesday), they have criticised submissions that contained "visions" for talking in generalities and lacking costings.

They have criticised other submissions for being "based on preconceived ideas".

And they have criticised "public comments quoted in the local press" for creating misconceptions, which were the basis of a significant proportion of submissions received.

The report stated that the contents of submissions received provided no substantive basis for changes to the directions contained in the draft strategy, and the strategy "is therefore recommended for adoption by council."

The report claims that the visions contained with submissions talked in generalities, and did not address some practical issues relating to existing development, infrastructure and subdivision patterns.

They provided no indication of the type of populations likely to be generated and indicate no infrastructure costs, the report stated.

"A number of the submissions appear to be based on preconceived ideas or impressions, which indicate that people have not read the documentation provided which substantiates the strategy or do not wish to accept the findings of the research undertaken to support the strategy," the report stated.

The council report also alleged

that "misconceptions were created through incorrect public comments quoted in the local press during the public consultation period, which were then reflected in the contents of a significant proportion of submissions received".

The report stated that one of these misconceptions was that the strategy would lead to more "high rise" development of the height of the Ettalong War Memorial Club and Resort.

"This is incorrect but the creation of this and other misconceptions was effective in generating submissions to the strategy."

The report claimed that PUDS provides for "economically and socially important population growth that can occur with minimal and cost-effective increases in the capacities of existing infrastructure over a 20-year period without adversely impacting upon the environment of the Peninsula."

"Additionally, the strategy facilitates town centre revitalisation and will result in better urban outcomes than are currently provided by existing residential flat buildings," the report stated, "the report stated.

The PUDS document was placed on public exhibition for six weeks.

As a result of the exhibition process a total of 27 individual submissions and 39 pro-forma letters were received.

The report stated that "in relation to population growth, submissions varied from those that adopt a 'put up the gate' to more people approach, through to those that maintain that 'no restrictions' should apply to the future population of the Peninsula".

Council agenda ENV.44, October 4



A sign prohibiting the drinking of alcohol in the Ettalong foreshore carpark

Alcohol-free zone proposals

Gosford Council officers have recommended that council retain Alcohol-Free Zones at Empire Bay, Ettalong Beach, Patonga, Pearl Beach, Umina and Woy Woy.

They have also recommended that the zones at Ettalong Beach and Patonga be extended.

A report to council stated that "community comment received has been supportive of their re-establishment and in some cases an extension of the zone was sought."

The only "qualification" received was for an area in front of Patonga Seafoods where the shop proprietor sought an exemption for a leased outdoor dining area.

The council report stated that "this situation presents significant difficulties in policing and is discouraged under the guidelines".

An extension of the existing zone was recommended at several locations due of community representations.

This included Ettalong Beach and Patonga.

Representatives for the Ettalong Beach Club asked for an extension of zone to The Esplanade from Picnic Pde to Bangalow St and Pacific Ave.

Patonga residents asked for an

extension of the zone to include Patonga Dr from the bottom of the hill near the pump-out station to the beginning of Bay St.

They also asked for an extension of the zone to include the water side of Patonga Dr adjacent to

small bordering fence of children's playground

An alcohol-free zone provides the police service with the authority to confiscate alcohol from persons within the zone at its discretion.

Council agenda SF.41, October 4

Lance Webb reserve may get funding

Gosford Council is looking at emergency funding for erosion on Lance Webb Reserve, following comments that placing a cycleway in that area was "unrealistic".

Peninsula resident Mr Michael Gillian said he raised the question of erosion in the reserve, stating that a cycleway in that area was unrealistic.

"As a result of an inspection afterwards by council staff, I understand emergency funding of \$50,000 will be called for to fence off and safeguard the reserve and to re-align the sandstone blocks on the beach," Mr Gillian said.

"Longer-term solutions for erosion on this reserve will now be looked at and these costs are likely to exceed \$1 million.

"I believe the priorities to deal with erosion, stormwater drainage, foreshore protection and routing the cycleway must be dealt with for the total plan area and not on a piecemeal basis."

Mr Gillian said council's plan to deal with the Town Beach area as a priority was "illogical".

"Available monies cannot be sensibly allocated without a total plan with cost estimates for the work to be completed.

"Sensible priorities can then be determined," Mr Gillian said.

"I have made council aware of my views and my concerns regarding this (Town Beach) committee's process and conflicts of interest."

**Lyle Stone, September 29
Michael Gillian**

Pearl Beach history

The Brisbane Water Historical Society is currently hosting a pictorial exhibition on the History of Pearl Beach at the Henry Kendall Cottage and Museum.

The exhibition is on display until the last weekend of the school

holidays.

Henry Kendall Cottage and Museum will be open seven days a week throughout the school holiday period.

**Press release, September 21
Kay Williams, Pearl Beach
Progress Association**



You'll be happy with the good old-fashioned value of our Wednesday Night Buffet at just \$15 per person from 6pm

Ettalong Beach War Memorial Club
81-83 The Esplanade, Ettalong
Phone (02) 4342 6111 Fax (02) 4342 2009
www.ettalongwarclub.com.au

For more information of members and their guests
call 02 4342 6111 or visit our website www.ettalongwarclub.com.au





Erosion on the Ettalong foreshore during March this year

Committee calls for study outcomes

Gosford Council's Coastal and Estuary Advisory Committee has recommended that council await the outcomes of the Brisbane Water Estuary Plan and Brisbane Water Flood Study before finalising the Ettalong Beach Reserve Plan of Management.

Peninsula residents and members of the Peninsula Dunecare group, Mr Michael Gillian and Ms Margaret Lund, gave a short talk on the Ettalong Beach Reserve Plan of Management to the committee at its meeting of August 24.

Mr Gillian provided the committee with a document outlining his concerns.

In the report, Mr Gillian stated that the development of detailed plans had to be done in an open, transparent way involving all stakeholders including the community and should include expert professional input from an environmental or dune specialist.

The report stated that the plan of management made no reference to

erosion problems on Lance Webb Reserve, Ettalong, nor was there room for a joint cycleway through this reserve, as stated in the plan of management.

Mr Gillian also commented on part of the plan which stated that "based on 1996 predictions, if no remedial action is undertaken between Picnic Pde and Memorial Ave in the next five years then undermining of this road will probably occur after this time if there is a severe storm".

He said that the area had been protected with "excellent vegetation and the formation of an incipient dune and a stabilised main dune".

"Compare this with Lance Webb Reserve which has no vegetation or dunal protection," Mr Gillian stated.

"The plan notes that the urban fabric of the town was built too close to the natural zone of shoreline movement.

"The dunes and dune vegetation protect this urban fabric from erosion and flooding."

Mr Gillian also pointed out that the Ferry Park and South Beach sectors, with very limited vegetation, suffered from erosion and the continual requirement to remove sand from causeways and The Esplanade when southerlies blow.

"The Esplanade is also in danger of being undermined near Kourung St," Mr Gillian stated.

"There is no doubt that the plan suffers from inadequate expert environmental input but there is

also a need to recognise conditions are changing.

"We also now have a much better understanding of the importance of the role of coastal dunes and vegetation and also of the why this area is very vulnerable.

"The Brisbane Water Estuary study will provide further light on the challenges this area faces."

The report stated that if council was intent to move forward with detailed plans it needed to understand site-wide issues.

"Initial consultant thoughts involved the removal of all the incipient dune, introduction of three large viewing platforms, a widening of the causeway fronting The Esplanade by destroying some of the main dune and the removal of coastal tea trees to provide better views.

"Such actions would destroy the integrity of the dune system and quickly bring about erosion as on Lance Webb Reserve."

Mr Gillian and Ms Lund asked the no plans be progressed for the fragile and vulnerable area that destroy the environment and the dunes and create major infrastructure risks for the future.

The plan of management was approved by council in May 2003 but has not yet had government approval.

The committee expressed concern at any potential plan which it believed may cause loss or degradation of the foreshore."

Council agenda CE/05/4, CE.020
October 4

Council staff defend contributions plan

Gosford Council officers have defended the adequacy of Section 94 developer contribution plans despite reduced population estimates predicted by the Peninsula Urban Directions Strategy.

A staff report has stated that a smaller population would need less infrastructure.

Even so, the officers have recommended that medium density housing take up rates be reviewed yearly for a possible adverse impact on Contributions Plan 31C.

The plans' works schedule was based on an estimated population at full development of 45,000.

The population at the 2001 census was 32,264, and population at the time of preparation of the draft strategy was estimated at 34,000.

The Peninsula Urban Directions Strategy contains estimates of population growth of between 5000 and 7500 giving a total population of between 39,000 and 41,500.

With an expected reduction in the estimated incoming population, a council report stated that there would be a "corresponding reduction in infrastructure requirements and therefore a reduction in the necessary expenditure".

The report stated that "if council were to adopt the strategy and subsequently alter planning controls, it would be necessary for council to amend CP31 A-D to reflect this."

The amendment of the plan would result in some facilities being removed from the works schedule as they would not be required due to less population.

"The issue at stake with the contributions plan is not land supply, which will not change, but assumptions over take-up rates for medium density housing over the

20-year life of the plan," the report stated.

The report stated that it is intended that a review of the contributions plan would take place as part of the preparation of a comprehensive contributions plan for the local government area.

This would reflect the new planning controls for the Peninsula that would be developed as part of the Comprehensive Local Environment Plan, according to the report.

"If there is a reduction in take up rates for the Peninsula, this is unlikely to be felt for a number of years when development opportunities are assumed to dry up.

"However by this time, council would have reviewed both the planning controls and contributions plan for the Peninsula," the report stated.

The report stated that, in the intervening period, council staff would carry out annual reviews of medium density take up rates, and if the rates declined significantly, a further report will be presented to council.

The PUDS was placed on exhibition from May 25 to July 8, with the exhibition period extended until July 29 and a public consultation session was undertaken on May 26.

The report stated that 50 people attended and most chose to speak to council officers.

The report to council recommended that council should also include the PUDS provisions as part of the review and preparation of the Residential Development Strategy and preparation of a City Planning Strategy and comprehensive LEP for the municipality.

Council agenda ENV.44,
October 4

Oral history is published

An oral history of the Bouddi Peninsula has been published by The Bouddi Society Inc.

Entitled Reflections from the Beach and the Bays, the local history was compiled from taped interviews and stories told to volunteers by the residents of Killcare, Hardys Bay, Pretty Beach and Wagstaff.

Their stories describe the lifestyle of the people who enjoyed holidays and those who lived on the Bouddi Peninsula between 1900 and 2000.

The book also tells of the first inhabitants, the convict settlers and those who followed, brought

by the ferries, in the days when roads were rough tracks.

The difficulties of the Depression of the 1930s, the effects of World War 2, the successful establishment of Pretty Beach School, the volunteer fire brigade and the surf club are all told in the words of the interviewees.

More than 60 residents contributed to the book, volunteering their stories, photographs, recording and technical assistance.

Copies of Reflections from the Beach and the Bays are available at the Wagstaffe General Store at a cost of \$15.

Press release, September
Jill Baxter, The Bouddi Society

Living Systems offers products to help you live better indoors by reducing or eliminating:

- dust mites
- pollen
- mould spores
- bacteria
- house dust
- smoke

To achieve the ultimate in indoor house air quality that goes beyond traditional air filtering methods, choose Living Systems.

For more information...
Independent Distributor

John Clarke
1 800 050 995

Roy Lamb The Sand Man

- For all your landscaping supplies •
- Soils • Mulches •
- Decorative Pebbles and Lots More •

Open 5 1/2 Days from 6am
25-27 Alma Avenue, Woy Woy

4344 1110 4344 3204

"BRING YOUR TRAILOR, BRING YOUR UTE"

BODES MAINTENANCE

Pat Linskey
Lic. No. 48055C

Professional Painting, Lawn Mowing,
Deck & Fence Restoration,
Gutter Cleaning & Yard Cleaning.
Fully Insured ~ Pensioner Discounts
Free Quotes

Ph: 4343-1394-Mob: 0419 414 518

Report provides Peninsula profile

Gosford Council officers have provided a profile of the Peninsula that was prepared for the Draft Peninsula Urban Directions Strategy (PUDS).

The report details the Peninsula's socio-economic, transport, economic, infrastructure and development characteristics.

The report stated that the population of the Peninsula was 32,264 at the 2001 Census.

"It was expected at the time of preparation of Contributions Plan 31 (CP31) in 1992 that the population would grow to 45,000 under existing planning controls in about 30 years time," the report stated.

"The population was growing slowly at a rate of 200 persons per year or a 2000 person increase in 10 years.

"The population is old with 23.8 per cent of the population over 65 compared to 11.9 per cent for the rest of Sydney.

"The largest household group is 'one person' households

that constitute 31.4 per cent of households compared to 22 per cent for the rest of Sydney.

"The population is income poor with 46 per cent of households falling into the lowest income category of \$500 or less per week compared to 26 per cent for the rest of Sydney.

"Unemployment is high with 7.5 per cent of the workforce unemployed compared to 5 per cent for the rest of Sydney.

"Home ownership is high with 42 per cent of homes fully owned compared to 39 per cent for the rest of Sydney.

"Community/recreational service provision is at similar levels to the rest of Sydney," the report stated.

The report claims that there is insufficient capacity existing on arterial roads feeding the Peninsula during existing peak periods.

The report also states that there is existing capacity in other areas including on arterial roads within the Peninsula, on the local roads, at key intersections and interchanges, on bus services, on footpaths and cycleways and on trains.

"Shop vacancy rates compared to the rest of Sydney are low in Woy Woy, high in Ettalong and average in Umina," the report stated.

"Retail spending is relatively highly self-contained.

"From 1999 to 2003 dwelling prices doubled in most areas of the Peninsula but in Ettalong they tripled.

"There are a total of 19,000 dwellings, 75 per cent of which are detached houses," the report stated.

"Approximately 100 new dwellings are constructed every year, most of which are units.

"A total of 3400 blocks of land are currently available for construction of multi-unit development.

"Some 70 per cent of these blocks need to be amalgamated with an adjoining block to create the minimum lot size for a development under current planning controls.

"Due to various constraints blocks will not be able to be amalgamated in a reasonable timeframe and therefore development will not proceed and population potentials will not be achieved within the original forecast period.

"Development controls for unit development do not encourage development that promotes good design, retention or planting of trees or appropriate treatment of stormwater," the report stated.

"Renewal in the town centres is restricted by a combination of development controls, subdivision, ownership patterns and particularly the costs associated with amalgamating small allotments."

The report also stated that there was capacity in the existing sewerage system and water supply system (subject to use of alternative supply and demand management).

The report stated that there was insufficient capacity in the stormwater system.

The PUDS document stated that population increases mentioned in the strategy could be allowed subject to infrastructure improvements already proposed and changes that only involve marginal improvements in the capacity and efficiency of the infrastructure provided.

It also stated that incentives would be provided to encourage the joining of sites for medium density development and "enable the realization of development potential".

The report stated that the strategy proposes to encourage a more balanced population profile by encouraging different medium density housing types, town centre residential living and retaining existing detached housing areas.

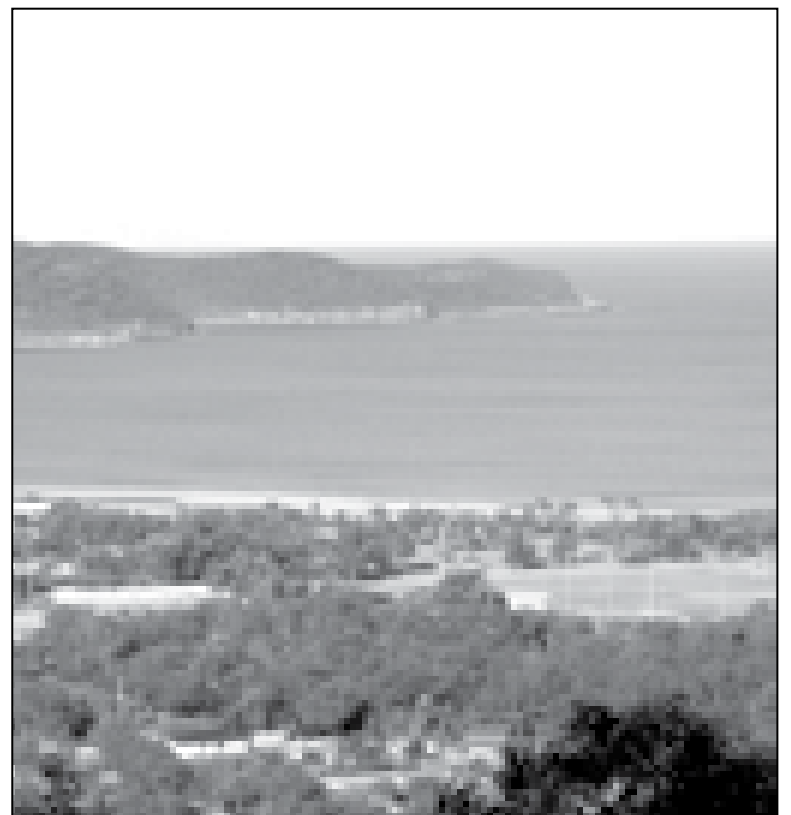
The strategy supports more intense development in and around town centres with reduced densities in areas away from the town centres.

The strategy also focuses on improvements in bus transport rather than light rail.

It also claimed that affordable housing opportunities could be created on council owned land to the northern edge of the Umina Shopping Centre, as well as the variety of housing opportunists across the Peninsula.

The strategy has been recommended for approval by council officers.

Council agenda ENV.44, October 4



A view of Ocean Beach and Broken Bay

Scientist warns of threat to Ocean Beach

Global warming may have adverse affects on the Peninsula, according to geoscientist Mr Peter Cowell from the University of Sydney's Institute of Marine Science.

Mr Cowell has recently developed models to display how far beaches may recede due to global warming.

Mr Cowell's mid-range modelling was recently reported in the Sun Herald, where it was stated that "the surf beach at Manly could recede by 34 metres by 2050 and 85 metres by 2100" with a worst case scenario that would result in the surf beach being eroded by 150 metres and the harbour beach receding 30 metres.

The article also pointed out that at Palm Beach, mid range modelling showed the beach could recede by 50 metres by 2050 and 125 metres by 2100, with a worst case scenario would result in the Palm Beach Peninsula disappearing as the beaches on either side recede

by 220 metres.

At Bondi, the worst case scenario would result in the beach pushed back 90 metres by 2100 and, at Maroubra, the beach could go back 105 metres, according to the article.

Mr Cowell said he knew Ocean Beach quite well.

"I haven't done any modelling for Ocean Beach but, from general principles, predictions there would be worse than most places along the Sydney and Central Coast," Mr Cowell said.

Mr Cowell said that this was because the sea bed offshore was of unusually low gradient, and this is what affects beach response to sea level rise.

"That is, the threat is much greater at Ocean Beach than at Palm Beach," Mr Cowell said.

"The inland side of the Woy Woy plain is also subject to shoreline retreat due to sea level rise."

Lyle Stone, Peter Cowell, September 28
The Sun Herald, August 21

Ticket prices reduced

A \$2000 grant from Gosford Council's Community and Cultural Grants for the annual Pearl Beach Chamber Music Festival will help reduce ticket prices next year, according to Pearl Beach Progress Association president Ms Kay Williams.

Held over the June long weekend each year in the local progress association hall, the festival is now in its 12th year.

Each year organiser Mr Henry Mendelson brings some of the country's top classical musicians in a three-day program of five concerts.

The June concert series currently being planned promises to be no exception, according to Ms Williams.

Tickets go on sale in May.

Press release, August 24
Kay Williams, Pearl Beach Progress Association

Crime in our Community

TUESDAY 11th OCTOBER Starts 18:30pm - COMMUNITY FORUM

An important event for any concerned resident.

As part of our on-going commitment to the Peninsula and its residents, Ettalong Beach Club is hosting our first community seminar, Crime in our Community.

Our special guest speaker will be Commander Alan Clark, Superintendent of the BWLAC.

Tickets \$5 with all proceeds going to Central Coast Neighbourhood Watch



Ettalong Beach War Memorial Club
81-83 The Esplanade, Ettalong
Phone (02) 4442 8111 Fax (02) 4442 3009
www.ettalongwarclub.com.au

Further information of members and their guests
+61 81 938 6666 ADDRESS for city and jobs call 02 955 9555

ETTALONG



BEACH CLUB

AT YOUR LOCAL PHARMACY
On sale Monday 3rd to Friday 14th October 2005, while stocks last

SAVE UP TO 50% OFF



WIN! a Home Fitness Pack VALUED AT \$1450

Simply purchase any advertised Save & Win product, fill in an entry form at your participating pharmacy and you're in with a chance to win!

Excludes pharmacy medicine

• York 520 Treadmill val. \$1295 • Omega Pedometer & Body Fat Monitor val. \$117 • Gym Pack val. \$50



Relieves pain, especially in muscles, is better tolerated than other NSAIDs, fast relief

\$17.95
PK



\$15.95
PK

Omega-3 fatty acids help reduce inflammation, improve heart health, and support brain function.

NEW FISH OIL COMBOS

MEGA PACKS... ...MEGA VALUE



- EPO - \$25.95
- Fish Oil - \$25.95
- Glucosamine - \$34.95
- Cod Liver Oil - \$12.95
- B Complex - TBA
- Natural Vitamin E - \$36.95
- Horseradish & Garlic - \$19.95
- Multi Vitamin & Minerals - \$19.95



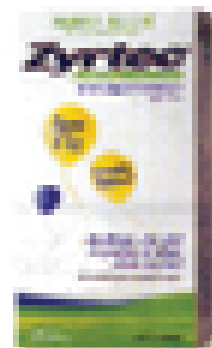
\$17.95
PK

MOTAMED CAPSULES
NEW!
ALSO AVAILABLE IN
TABLETS &
NO CAPSULES

NEW!
GET MORE EARLY
WITH THE NEW
SOFT GELS

\$10.95
EA

TRADE
BY BULK
100



FROM
\$1.99
PK

NEW!
Fast relief from knee osteoarthritis.
Knee braces, including the Zyltec knee brace, can help reduce pain and improve function. Zyltec is the only brace designed specifically for knee osteoarthritis. Zyltec is made from a special material that provides support and stability to the knee joint. Zyltec is the only brace that is designed to provide relief from knee osteoarthritis.



FROM
\$1.99
PK

Shop 4, Peninsula Plaza
Woy Woy
Ph: 4342 2256

Trading Hours
Monday to Friday
8:30am to 6:30pm
Saturday 8:30am to 4pm
Sunday 9am to 2pm

Blood donors are wanted

The Australian Red Cross Blood Service is seeking more than 50 Peninsula residents to give blood this week after the October long weekend.

Blood supplies can rapidly decline over holiday periods and blood service representative Ms Kristen Schiemer said people were needed to give blood to ensure there was enough blood over the coming weeks for those people who need it.

"Some blood products last for just five days and it is therefore imperative that we boost the blood supplies before and after the holiday weekend," said Ms Schiemer.

"We are encouraging people to come in and give blood before or after they go on holiday to help

meet the needs of those people who rely on blood donations for survival or quality of life."

Blood and blood products are used by cancer patients, mums having babies, people undergoing surgery and burns and accident victims.

New and current donors are welcome and are asked to bring photo ID, drink at least four glasses of juice or water and eat a decent meal in the hours before donating.

Appointments can be made by contacting 13 14 95.

The Woy Woy Donor Centre is at Woy Woy Hospital, Ocean Beach Rd, Woy Woy.

The centre will be open on today from 1pm to 7.30pm

**Press release, September 27
Kristen Schiemer, Australian Red Cross Blood Service**

New plans for disabled access

Owners of the Pavilion Shopping Complex have submitted plans to provide disabled access to George St, Woy Woy, after negotiations with neighbouring Deepwater Plaza made no headway.

Gosford Council has asked for engineering drawings of the plans and a commitment to an agreed time frame to provide disabled access, according to council's director of environment and planning Ms Colleen Worthy-Jennings.

Questions had been asked by both Cr Chris Holstein on July 5 and Cr Jim Macfadyen on August 2 about the provision of disabled

access to the building.

Ms Worthy-Jennings report to council stated: "Council approved the development application in August 2002, where a ramp for disabled access was approved to exit at the boundary to provide access onto land which contains the Deepwater Plaza.

"The building works were overseen by a private principal certifying authority who had issued a final occupation certificate at the completion of the works."

The report stated that soon after the Pavilion Centre commenced trading, council became aware that the disabled access did not comply with Building Code of Australia requirements as no kerb ramp was provided at the boundary.

It became known to council that a dispute existed between the adjoining property owners in relation to the access point for the disabled access ramp.

Council did not report the action of the principal certifying authority to the Department of Infrastructure, Planning and Natural Resources (DIPNR) and instead sought to resolve the matter with the adjoining property-owners involved.

The report stated that, although negotiations were ongoing and there appeared to be a resolution between the parties, "the owners of the Deepwater Plaza property are now, it would seem, not prepared to agree to right of disabled access across the boundary onto their land".

Following an order under the Environmental Planning and Assessment Act 1979 requiring disabled access, the developer submitted to council an alternative plan which provides for the disabled access to exit onto the footpath fronting George St.

This will not require the agreement of any adjoining property owner.

**Council agenda Q.92, Q.115,
COR.32**

Convert your LPs and cassettes to CDs.

Only \$15 per CD

Listen to and enjoy your favourite music again without having to worry about turntables, cassette decks or needles!

CDs are supplied in a slimline case and are fully labelled.

Phone Lee

on

4340 2385



Pictured at the opening were Mr Peter Mote, Mr Darrell Pannowitz, general manager and director of nursing Mrs Terri Parker, Mr Garry Varley, Member for Robertson Mr Jim Lloyd, Mr Don Leggett, Mr Geoff Melville, Mrs Jan Tweedie, Mr Chris Westacott, and finance and administration manager Mr Glen Scorer

Extensions opened at Peninsula Village

The project of former Gosford mayor Mr Don Leggett came to fruition recently with the official opening of Don Leggett House at the Peninsula Village Retirement Centre.

Peninsula Village opened 25 years ago to provide care and accommodation for the Peninsula's senior citizens.

The village is the Peninsula's biggest employer with over 250 staff looking after 550 residents.

Owned by a non-profit community group, it has assets valued at over \$50 million and an annual turnover of more than \$10 million.

Mr Leggett said: "All of this has been achieved through the

hard work of a large number of volunteers over the past 30 years and without any bricks and mortar government funding."

Member for Robertson Mr Jim Lloyd attended the opening, toured the village and met with residents and the management of the village.

The Australian Government awarded 61 low care licenses worth \$902,000 to assist Don Leggett House which includes a 12-bed dementia unit.

The facility was named Don Leggett House in recognition of Mr Leggett's efforts to ensure the new centre's completion and for his contribution to the retirement centre over the past 30 years.

"Don Leggett sincerely deserves

this honour as his dedicated service to the Peninsula Village Retirement Centre, and the Peninsula as whole, has been outstanding," Mr Lloyd said.

"Don has been a tireless worker for the Central Coast community for most of his life and the Peninsula in particular has benefited from his dedication and commitment."

Other speakers at the official opening paid tribute to the work that had gone into completing this major extension and turning it into a place where senior citizens wanted to be.

**Cec Bucello, September 29
Press release, September 28
James Larsson, Office of the
Member for Robertson**

Grow seeks members

The Woy Woy Grow group is seeking more members for its weekly meetings..

Grow is a national organisation of small groups of people who have experienced depression, anxiety or other mental or emotional distress.

They come together to help each other deal with the challenges of life.

People often come to Grow while struggling with the loss of a job, a loved one or a relationship.

The voluntary, community-based organisation uses a program which is designed to change thinking and behaviour patterns while sharing thoughts and feelings with understanding people.

The approach is based on 50 years' experience and is considered

an effective way to treat mental and emotional distress.

To find out more about the Woy Woy group, phone Grow on 1800 032 120.

**Press release, September 28
Grow NSW**

Course about teens

The Youth and Family team of Broken Bay Parish (Umina-Ettalong) is hosting a Living with Teens parenting course.

The course is facilitated by Unitingcare Burnside and begins on Thursday, October 20, running each Thursday for six weeks from 10am until noon at the Umina Uniting Church.

Topics covered in the sessions include normal development of teens, discipline, communication skills, self-esteem and sexuality,

drugs and alcohol.

There is no charge for the course and free childcare is provided.

Places are limited and bookings need to be registered at least 10 days before the group is due to commence.

Contact family worker Sue Tancred, at the Parish office on 4341 0793 or 1800 067 967 for more information.

**Press release, September 19, 26
Alison Davy, Sue Tancred,
UnitingCare Burnside**

Active Wellness Tip Feeling exam strain?

During this time we could all use a little help with improving concentration and mental stamina.

There are some key nutrients that are depleted by the body's response to stress.

These include the B complex, Vitamin C as well as the minerals magnesium and potassium, all of which are essential for functioning of the nervous system.

As well as minerals and vitamins, several herbs have a long tradition of usage for assisting the brain and nervous system and all need to be at optimum levels for optimum performance.

For more information call us on 4342 9245
www.activewellness.org

News



Alva Bell's award-winning garden

Local gardens win competition

Several winners of the Gosford City Garden Competition were from the Peninsula.

The winners were announced recently at a special presentation held at the Gosford Regional Art Gallery.

Gosford mayor Cr Malcolm Brooks presented the winners with some of the awards including the best environmentally-friendly garden, best business-commercial garden and champion residential garden.

Umina resident Alva Bell won a best champion garden award.

Another Umina Beach resident, Ms Suzanne Hickey, won Best Balcony or Patio.

Daleys Point resident Liane Neich also won Best Residential Rear Garden, while Kerrie Spencer and Chris Smith won Best New Residential Garden, Best Environmentally Friendly Garden: Residential and Best Waterwise Garden.

"Considering the dry weather conditions and water restrictions, organisers were particularly impressed with the standard and quality of the entries," said Gosford Council media officer Ms Breearna Sharp.

The winners all received prizes donated by sponsors including gift vouchers and garden supplies.

There was an open day on September 25 to showcase some of the winning gardens.

Entry to the gardens was a gold coin donation with proceeds going to the Give Me Five for Kids appeal.

There were three gardens on the Peninsula entered in the competition this year.

The other entrant was Woy Woy resident Ms Edward Anderson.

Press release, September 22
Breearna Sharp, Gosford Council

Community could fund Yum Yum tree repairs

Cr Terri Latella has suggested that the community could provide funds to help repair the Yum Yum trees at Killcare.

"It is my belief that some of the funds could actually come from the community that want the direct area under the Yum Yum trees fixed," Cr Latella said.

"Is it possible that we look at the direct area around the trees and try to expedite some regeneration issues with funds that are quite willingly being provided by the community there?"

The director of city services Mr Stephen Glen said that is was possible.

At an earlier council meeting, Cr Jim Macfadyen had asked when maintenance would be performed on the trees.

"It was my understanding when this matter last came to council that council was to carry out some restoration work to help preserve those trees," Cr Macfadyen said.

"This included timber around the tree and soil to cover the root system."

He asked when this maintenance would happen.

Mr Glen reported that the protection of the Yum Yum trees at

Killcare was to be a component of a major upgrade of the area.

His report stated that "the necessary works are beyond the scope of standard maintenance and therefore require additional funding".

It went on to state that "the full proposal included the aeration of soil surrounding the Yum Yum Trees, elevation of the sea wall to the height of the adjacent sea wall and wharf, covering of the exposed roots with river sand and an angular-shaped gravel to help bind the roots."

Mr Glen stated that a boardwalk or platform would then be constructed around the base of the trees over the roots to prevent further damage to their root system from pedestrians frequenting this area.

"The boardwalk would then become part of disability access between the toilet block and picnic tables," Mr Glen said.

The project was put up for consideration as part of the 2005/06 capital works program but did not receive funding.

The report stated that it would be resubmitted for consideration in the 2006/07 capital works program.

Council agenda Q.124, COR.32, September 27

Catholic church owned land plans disappear

Copies of the development application for the Catholic church owned land at the corner Hillview St and Veron Rd, disappeared from Woy Woy library during the exhibition period.

The plans, currently before the Land and Environment Court, disappeared from the libraries

during August, according to Gosford Council's director of environment and planning Ms Colleen Worthy-Jennings.

Ms Worthy-Jennings was responding to a question from Cr Terri Latella on August 2 asking why council had withdrawn exhibition of the plans at Woy Woy Library.

Ms Worthy-Jennings said the application was advertised in the newspaper on July 20 with a closing date for submissions of August 19.

Notification letters were sent to all neighbours and those persons who had made submissions, Ms Worthy-Jennings said.

Copies of plans and documents were provided to Gosford Library on July 27 where they were sent to Woy Woy and Erina Libraries.

"Gosford Library has confirmed it still has its copy, however, copies supplied to Erina and Woy Woy are missing," Ms Worthy-Jennings said.

"Staff are unable to ascertain what happened to these copies although occasionally persons accessing the information take the plans and documents with them."

Ms Worthy-Jennings stated that at no time was any instruction given by Environment and Planning staff to withdraw the development application from exhibition.

A new copy of the documents/plans was hand-delivered to Woy Woy library on Friday, August 5.

Council agenda Q.111, COR.32, September 27



Have you heard about the Pensioner Excursion Ticket for the Central Coast?

Find out from the office of Marie Andrews MP

"Contact Marie with any matters of State Government concern."



30 Blackwall Road or PO Box 201 Woy Woy NSW 2256
Email: marie.andrews@parliament.nsw.gov.au

Charlie's Discount Furniture
NO ONE CAN LIKE CHARLIE CAN
Chinese Cabinets - Assorted Sizes - Various Prices
4341 8727
Cnr. Blackwall Road and Terry Ave, Woy Woy

Gosford City Council Aluminium Can Recycling

Did you know? People in Gosford now recycle 64% of their aluminium cans, but you could still do more...

'Let's get it sorted'



Recycling bin



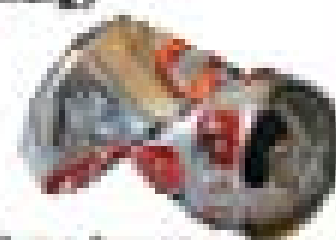
You can recycle your used aluminium drink cans in your **YELLOW** top recycle bin:



Why recycle aluminium cans?



- ✓ Saves natural resources
- ✓ Saves landfill space
- ✓ Creates jobs
- ✓ Uses 96% less energy



- ✓ Every can that's recycled saves enough energy to power a television set for three hours

Bin collection

Ensure your bins are located half a metre apart with the handle facing away from the road.

REMEMBER not to place your bin too close to a tree or parked car.
Please shut all bin lids to avoid spills.



For more information phone our customer service centre on 13 13 35 or go to: www.gosford.nsw.gov.au and follow the links to waste services.

What's On in and around the Peninsula

Listings in this section are free to not-for-profit community groups although a subscription to help support Peninsula News would be appreciated.

Many events listed take place at the following locations:

BFC, Beachside Family Centre, Umina Public School

CU, Club Umina, Umina Beach Bowling Club, Melbourne Ave, Umina Beach 4341 2618

CWAHWW, CWA Hall, Anderson Park, Brick Wharf Rd, Woy Woy

EBACC, Ettalong Beach Arts & Crafts Centre, Kitchener Park, Cnr Maitland Bay Dve & Picnic Pde, Ettalong 4341 6344

EBWMC, Ettalong Beach War Memorial Club, 211 Memorial Ave., Ettalong 4341 1166

ECC, Everglades Country Club, Dunbar Rd, Woy Woy 4341 1866

EMBC, Ettalong Memorial Bowling Club, 103 Springwood St Ettalong 4341 0087

EPH, Ettalong Progress Hall, Memorial Ave, Ettalong

ESCC, Ettalong Senior Citizens Centre, Cnr Karingi St & Broken Bay Rd Ettalong 4341 3222

MOW, Meals on Wheels Hall, Cnr Ocean Beach Rd and McMasters Rd.

PBPH, Pearl Beach Progress Hall, Diamond Rd, Pearl Beach

PCC, Peninsula Community Centre, 93 McMasters Rd, Woy Woy 4341 9333

PCYC, Osborne Ave., Umina Beach 4344 7851

TWYS, The Web Youth Service, 93 McMasters Rd, Woy Woy 4342 3684

UMBSC, Umina Beach Surf Club

UCH, Umina Community Hall, 6 Sydney Ave., Umina Beach 4343 1664

WH, Wagstaffe Hall, Cnr Wagstaffe Hall & Mulhall St Wagstaffe

WWBC, Woy Woy Bowling Club

WWCH, Woy Woy Community Hall, cnr Ocean Beach Rd & McMasters Rd.

WWLC, Woy Woy Leagues Club, 82 Blackwall Rd Woy Woy: 4342 3366

DAILY EVENTS
Woy Woy Pelican Feeding, 3pm Pelican Park, Fishermans Wharf.

Playtime Mon-Fri 9-10am, Little Gym PCYC

TUESDAY
First Tuesday of every month

Buffalo Primo Lodge No 9, **UCH** 7pm.

Second Tuesday of every month
Playgroup for Aboriginal & Torres Strait Island families. **BFC**,

Senior's Idol, 1 - 4pm **EBWMC**,

Toastmasters, 7pm, enq: 4341 6842; **Seniors Day** 12 noon **EBWMC**.

Get Together afternoon tea, **ESCC**, enq: 4341 3222.

Pearl Beach Craft group, **PBPH**, 1.30pm, enq: 4342 1459.

Stroke recovery group, **MOW**, 11.30am.

Diabetes Support Group 10am, **ECC**

Third Tuesday of every month
Buffalo Lodge Knights Chp9, **UCH** 7pm.

Woy Woy Peninsula **Arthritis** Branch, **MOW** 10am, enq: 4342 1790.

Fourth Tuesday of every month
Playgroup for Aboriginal & Torres Strait Island families. **BFC**

Toastmasters, **EBWMC**, 7pm enq: 4341 6842.

Combined Pensioners association afternoon tea, **ESCC**, enq: 4341 3222.

Every Tuesday
The Web, **TWYS**, **Drop** in centre 12-18yrs 12pm - 5pm

Empire Bay Scrabble Club 9.15am-12.45pm Shirley 4369 2034

Judo all ages \$3, 5pm, **Playgroup** 9 - 11am, **Peninsula Dance and Theatre School** 3.45pm, **Innovative Kids** 3.15 - 4.15pm, **Tai Chi** 2pm **PCC** enq: 4342 4121.

Circuit Boxing (Women) 9am, **Boxing/fitness training**, 4pm (Junior) , 5pm (Senior), **Breakdancing**, 5pm **PCYC**

Early Bird Bingo, 11am; Come in Spinner, 12 noon; Club **Bingo**, 2pm; **Mystery members**, 5pm. **WWLC**.

Ladies Golf, 18 hole 8am; Ladies outdoor bowls, 9.30am; **ECC**

ESCC - Ladies **Indoor Bowls**-9am;

Handicraft-9am; **Cards**-12.30pm;

School for Seniors, **Judo**, Seniors/Women, 6.30pm, **PCC**.

Alcoholics Anonymous 6pm John the Baptist Church Hall, enq: Julie 4379 1132

Tai-Chi classes **WH** 9.30am (ex sch hols), enq 4360 2705

Rotary Club of Woy Woy 6pm **ECC**

Folk Art 9.30am, **Oils and Acrylics** 12 noon, **Silk Painting** 1pm **EBACC**

Children's story time, Umina library, 10.30 am (Except Jan).

Adult tap dancing **EPH** 6pm, enq: 4342 3925.

Gym Sessions 8am-12noon **PCYC**.

Gym Circuit 9:15am-10:15am **PCYC**.

School Sport 1pm-2:45pm **PCYC**.

Junior Boxing 4pm-5pm **PCYC**.

Senior Boxing 6pm-8pm **PCYC**.

Gym Circuit 6pm-7pm **PCYC**. **Sports bar raffle** **EBWMC**

Sahaja yoga meditation **CWAHWW**, 10:30am enq: 4328 1409.

Computers, 9am, **ESCC**

Playgroup 10-12pm Kids 0-5yrs, Woy Woy Progress Hall, 76 Woy Woy Rd, Ph: Juhel 4342 4362

WEDNESDAY
First Wednesday of every month

Older women's network, **WWLC**, 10.15am, enq:4343 1079

Seniors Shopping day, Deepwater Plaza, Woy Woy, enq: 4341 4206

CWA social day, **CWAHWW**. 10am, handicrafts, 1pm, enq: 4344 5192

Ettalong Ratepayers & Citizens Progress Association, **EPH**, 7.30pm.

Second Wednesday of every Month
Woy Woy VEIW Club, friendship day, **MOW**, 11am, enq: 4342 0805

Red Cross, Umina branch meeting, Umina Uniting Church Hall, 1:30pm.

Woy Woy Community Aged Care **Auxiliary**, 10am enq: 4344 2599.

Umina Beach **Probus Club** **ECC** 9.30am, visitors welcome.

Third Wednesday of every month
Woy Woy VIEW CLUB - luncheon & guest speaker, 10.30am, Everglades Country Club, 4342 0805

Every Wednesday
St John's Ambulance; Woy Woy Aged Care, 7pm, Enq:4341 3341.

Killcare - Wagstaffe Rural Fire Brigade 7.30pm Stanley St Killcare enq: 4360 2161.

Mystery Members 5 - 6pm, **Pick A Prize** 6 - 7pm, **WWBC**

The Web, 12pm - 6pm, **Computers**, 1.30pm, **ESCC Young Women's Group** 12-18 yrs, **TWYS**

Counselling by appointment, **PCC**

Rock'n'Roll Dance Class **EBMC** 7pm

Brisbane Water Bridge Club, 9.30am and 7.30pm, enq: 4341 6763, 7pm

Oil Painting, 9am **Multi-craft needlework** 10am, Girls' **BJP School of Physical Culture**, 3.30pm, 4-13 yrs enq: 4344 4924

Playgroup 9 -11am, **Brisbane Water Bridge Club** 9.90am - 1pm and 7.30 - 10.30pm, **Weight Watchers** 5.30 - 7.30pm, **Tai Chi** 2 - 3pm, **School for Learning** 9am **PCC**.

Peninsula **Choir** rehearsal 7.30pm St Andrews Hall Umina.

Brisbane Waters **Scrabble** Club, **MOW** 6pm, enq: 4341 9929.

Men's 18 hole **golf**; Men's triples bowls, 1pm. **ECC**

Seniors fitness **EPH** 9am, enq: 4385 2080.

Indoor Bowls - 9am; **Fitness** - 1pm

Leatherwork-9am; **Table Tennis**-9am. **Scrabble** 1pm **ESCC**.

Social Darts, 7.15pm **EMBC**,

Gym Sessions 8am-12noon **PMC**. (Includes **Self Defence for Young Women** 1pm-2pm) **PCYC**.

Gym Circuit 6pm-7pm **PCYC**. **Circuit Boxing** (Women) 9am, **Boxing/fitness training**, 4-5pm (Junior) , 5-6pm (Senior), **PCYC**

Killcare Wagstaffe Playgroup **WH** (ex sch hols). 10.00 - 12pm, enq: 4360 1145.

Drawing 9am, **Pastels** 11.30am, **Oils and Acrylics** 2pm **EBACC**

Children's story time, Woy Woy library,

10.30- 11.30am (Except Jan).

Alcoholics Anonymous 12.15 - 2.30pm, 6.30 - 8.30pm St John the Baptist Hall, Blackwall Rd, Woy Woy.

Handicraft CWAHWW, 9am, enq: 4341 1073.

THURSDAY
Second Thursday of every month

Council education Officer, Woy Woy Environment Centre, 1-4pm,

Outsiders club, **EBWMC**, 9am.

Australian Bus Trips **PCC**

Fourth Thursday of every month
9am - 12 midday. **Free immunization** clinic for Aboriginal & Torres Strait Island children 0 - 5 years, **BFC**

Council education Officer, Woy Woy Environment Centre, 1-4pm,

Umina Probus, **ECC**, 10am.

Every Thursday
Creative Writing group meet every Thursday from 11am to 1pm in the CWA building in Woy Woy. Enq 4369 1187 for more details.

Counselling; by appointment, **Yoga** 10am, **Belly Dancing** 6.30pm (Beg) 7.30 (Adv), **Brisbane Water Bridge Club** 12.30pm **PCC**

Free entertainment 6.30 pm

Senior Snooker 8.30am **Ballroom Dancing**, 10am, **Trivia**, 7pm, **Indoor Bowls**, **Fishing Club Raffle** 5.15pm, **Members Badge Draw**, **EMBC**.

Drumming, Bouddi Women's Drumming, 2-3pm, 73 Highview Rd Pretty Beach, enq: 0425 229 651.

Scrabble, Progress Hall, Woy Woy Rd, 12.30pm. **Bingo**, 9.30 - 11.30, **EBWMC**

Treasure Chest, 11.30am - 12.30pm, **Club Bingo**, 2 - 4pm, **Mystery Members** 5 - 6pm, **WWBC**

The Web, 12pm - 6pm **Young Men's Groups** 12-18 yrs, **TWYS**

Ladies 18 hole **golf** **ECC**

Tai Chi-11.35am; **Dancing** 9am; **Indoor Bowls**-9am; **Table Tennis**-1.45pm; **Cards** 12 noon, **ESCC**

Judo all ages, 5.30pm:Enq: 43424121. **PCC**

Line Dancing 9.30am, **Social Darts** **CU**, 7.30pm,

Stitchery Circle 9.30am, **EBACC**

St John's Ambulance; Brisbane Water Cadets, 7pm, Enq:4341 3341.

Children's story time, 3 - 5 yrs Umina library, 10.30-11.30am (Except Jan).

Gym Sessions 8am-12noon **PCYC**.

Gym Circuit 9am-10am, 6pm-7pm, **School Sport** 1pm-2:45pm **PCYC**.

Osborne Ave., Umina Beach 4344 7851

Social Tennis 9am-12pm, Pearl Beach Courts, enq: 4369 3195.

Adult tap dancing, **EPH** 10am; enq: 4342 3925

Bingo 9.45am, **Karaoke** 6pm **EBWMC**

Circuit Boxing (Women) 9am, **Boxing/fitness training**, 4pm (Junior) , 5pm (Senior) **PCYC**

Al-anon/Alateen family support group "The Cottage" Vidler Ave Woy Woy, 12:30pm, 7pm.

Brisbane Water Bridge Club, 12.30pm, **WWCH** enq. 4341 6763

FRIDAY
Second Friday of every month

2pm Peninsula **Twins Club** Free. **BFC**

RSL Sub branch **EBWMC**, 2.30pm.

Third Friday of every month
Legacy Ladies, **EBWMC**, 10am, enq: 4343 3492.

Fourth Friday of every month
South Bouddi Peninsula Community Assoc. **WH**, 1.30pm, enq: 4360 1002.

Civilian widows, **ESCC**, 1pm.

Every Friday
Kids entertainment Yrs 7 -12, 7.30pm

PLAYGROUP, 10am for Mums & preschoolers, Umina Uniting Church.

Bingo 11.30am, food prizes, raffles, tea & coffee **UCH** Enq:4343 1664

Lollipop Music Playgroup **BFC** 9.15am. Enq: 43 431929.

The Web, 2pm-9.30pm **Doctor & Nurse** for 12-18 yrs old, **TWYS** 2-9:30pm

Old Wags **Bridge Club**, **WH** (except 4th Fri) 1:30pm, enq: 4360 1820.

Free entertainment, **Players Lounge** 5.30pm **WWLC**.

Men's 18 hole **Golf**, **ECC**

Aqua-fitness, Woy Woy Hospital Hydro Pool, 1:30 & 2.30pm, enq: 4325 1869

Active Over 50's **Exercise Class** **EPH** 9.15am, enq: 4342 9252

Line Dancing-9am; Free Entertainment 7.30 - 11.30pm, **Kindy Gymnastics** beginners 9.30am, advanced 10.30am,

Pilates Classes, 11am to 12noon, enq: 4344 7909 **PCC**

Painting - 9am **ESSC**

Gym Sessions 8am-12noon, **Gym Circuit** 9am-10am **PCYC**.

Peninsula Pastimes Ettalong Baptist Church, Barrenjoey Rd. 9.30am, (Ex sch hols), **Primary Kids Club** 4.30pm, **Youth Group** 7pm, enq: 4343 1237

Alcoholics Anonymous 6pm, St John the Baptist Hall, Blackwall Rd, Woy Woy, enq: 4342 7303.

Club Bingo, **Cash Housie** 11.30am - 2.30pm, **Mystery Members** 5 - 6pm,

Free Entertainment Players Lounge 7.30 - 11.30pm, **Players Niteclub** - 10pm - 3am, **WWBC**

Hardys Bay Community Church, **indoor bowls**, **canasta**, **scrabble**, morning tea 10am, enq 4363 1968.

Circuit Boxing (Women) 9am, **Boxing/fitness training**, 4pm (Junior) , 5pm (Senior) **PCYC**

Kids Club (Primary) .4-6pm, **Brisbane Water Bridge Club**, 12.30pm **WWCH**, enq. 4341 6763,

Computers, 1pm, **Scrabble** 1pm **ESCC**

Kindy gym 0 - 3yrs 9.30 - 10.15, 3 - 5yrs 10.30 - 11.15am **PCC**

SATURDAY
First Saturday of every month

The National Malaya & Borneo Veterans Assoc Aust meet, **EBWMC**, 2.30pm Enq: 4340 4160

Second Saturday of every month
Melaleuca Wetland **Regeneration** Group, Boronia Ave, Woy Woy, 8am.

Pretty Beach **Bushcare** group, Pretty Beach end Araluen Track, 8am.

Save our Suburbs, Woy Woy South Progress Hall, 1pm, ph: 4342 2251

Ex-Navalmen's Assoc, Central Coast Sub-Section, **WWLC** 10am.

Third Saturday of every month
Umina P & C **Bushcare** 9am, Umina Campus of **BWSC**, Veron Rd Umina. enq: 4341 9301

Market Day, 9am Sydney 2000 Park, Umina **UCH**

Last Saturday every month
Wagstaffe **Bushcare** group, Half Tide Rocks sign, 8am.

Melaleuca Wetland **Regeneration** Group, Boronia Ave, Woy Woy, 8am

Every Saturday
The Web, **Activities** for 12-18yrs old, 4.30-9.30pm **TWYS**

Cash Housie St Mary's Hall, Ocean View Rd Ettalong 7.30pm Enq: 4369 0626.

Cabaret dance & floor show, 8pm free, Men's 18 hole **golf**; Men's triples bowls 1pm; **ECC**

Old Time & New Vogue Dancing; 1pm, Enq: 4341 2156 **Snooker** 8.30am **EBWMC**

Gym Sessions 9am-12noon, **Drama & Discovery** 9am-11am **PCYC**.

Arts & Entertainment

Blues afternoon is planned

Blues Across the Bay will be held at Broken Bay on Saturday, November 12.

It will include performers such as the Mal Eastick Band, Col Ray and The Scary Cats and The Neil Anderson Duo.

"After some serious health problems forced Mal Eastick off the road for several years, we are ecstatic to announce that he is back and champing at the bit, ready to headline our little festival," said blues organiser Mr Garrie Sinclair.

"Mal is one of Australia's most respected blues guitarists and brings with him the Mal Eastick

Band first formed around 1997 and happily reunited and playing strong."

"Col Ray and The Scary Cats are a quirky blues outfit dedicated to the preservation of blues music in Australia, genuine delta dobro and tongue popping blues harp.

"The Neil Anderson Duo features north coast singer-songwriter-guitarist Neil Anderson, a regular performer on the Central Coast, and long time associate Andy McClean on harmonica and vocals.

The concert will be held on November 12, with music from 1pm to 5pm, at the Broken Bay Sport and Recreation Centre.

Concert goers are asked to

bring picnic rugs or chairs, hats, sunscreen, picnic food and drinks.

There are no shops at the sport and recreation centre and only one general store at Patonga.

The first ferry from Patonga to the centre leaves around 11am with the ferry returning at around 5.30pm.

Tickets to the event cost \$35 for adults and \$25 for children 14 years old and under.

Ticket includes ferry to and from the venue.

For more information or to book a seat, contact 0417 671 261.

Press release, September 28
Garrie Sinclair

Cabaret to screen at Pearl Beach

Pearl Beach Progress Association will screen the movie Cabaret! during October in Pearl Beach Memorial Hall, which will be renamed "Déjà vu Art House Cinema" for the occasion.

The association is reintroducing community movies after a 45-year break, in order to raise funds for the hall.

The association needs to raise \$40,000 to upgrade the hall's toilets, install disabled toilets and access and provide an improved outdoor space for events.

Popcorn and lollies will be for sale at the event.

Tickets to the event cost \$10 and are available at the door.

Doors open at 7.15pm and the movie starts at 7.30pm.

Mike Rubbo, moviemaker, will

be on hand to discuss the finer points of the movie following the screening.

The public movie night will take place on Saturday, October 8, at the Memorial Hall, 9 Diamond Rd, Pearl Beach.

Press release, September 27
Kay Williams, Pearl Beach Progress Association

Songwriters will appear

Songwriting duo "That's That" will be appearing at the Peninsula Theatre, Woy Woy, on October 8.

Dianne Butler and Karen Clarke combine vocal harmonies and guitar with the rhythm of drums.

The evening will feature a range of styles including folk, jazz, contemporary, and some country.

The show will feature a collection of songs written for the duo's new

CD "Divine Void" which was to feature at the Wicca Convention in London.

After the convention was cancelled due to the terrorist bombings, the pair decided to run their first show on the Peninsula.

"Come and join us for a night of fun embracing the joy and beauty of music and the sounds of harmonies," Karen said.

The concert includes guest performances by Kez, a singer

songwriter from Sydney, guest drummers and a few other surprises.

Tickets are also available at Peninsula Music, Woy Woy.

Peninsula Theatre is located within the Peninsula Community Centre Complex at the corner of McMasters and Ocean Beach Rd, Woy Woy.

Press release, September 8
Karen Clarke, That's That



Rosmary Parsons and Brenda Logan receive the Host Employer of the Year award on behalf of Woy Woy Little Theatre

Theatre group named

Host Employer of the Year

Woy Woy Little Theatre was the Host Employer of the Year - Entertainment at the Central Coast Vocational Education and Training Awards on September 20.

The group won the award for its support to students of Brisbane Water Secondary College studying the Certificate III Live Production, Theatre and Events course.

During the year, Brenda Logan and Rosemary Parsons from the Little Theatre and John Maxwell from the college worked together on a major project to use their

combined talents to stage Blood Brothers by Willy Russell.

Their hard work resulted in the exciting production staged at the Peninsula Theatre during August this year, according to publicity officer Ms Jan Taylor.

In further success, stage manager of Blood Brothers Chris Richardson, who is a member of the Little Theatre and a student of the college was named Entertainment Student of the Year.

Press release, September 26
Jan Taylor,
Woy Woy Little Theatre



Fourth term classes begin soon at Ettalong Beach Arts and Crafts Centre

- Patchwork ● Quilting ● Folk Art
- Stitchery Circle ● Pastels
- Oils ● Acrylics ● Children's Pottery ● Silk Painting
- Pottery ● Drawing ● Silvercraft
- Children's Art ● Watercolours

Enquiries : Penny Riley 4360 1673

KITCHENER PARK, ETTALONG
Corner Picnic Parade and Maitland Bay Drive

★ WHAT'S ON ★

PENINSULA THEATRE, CNR OCEAN BEACH & MCMASTERS RDS, WOY WOY

THE UNEXPECTED GUEST

This intriguing play will have you on the edge of your seat as the characters weave a complex web of deception and tragedy.

October 21 to November 6

8pm Fridays and Saturdays, 2pm Sundays, on sale October 12

Laycock St Theatre

Central Dance Company Presents

"Nutcracker Act II"

With Special Guest professional dancers.

October 6 to October 8 - 8pm

TICKETS SELLING FAST!

The Woy Woy Peninsula Lions Club invites you to attend their inaugural Vintage Ball

Enjoy an evening of fine dining (Three Courses) and Dancing

Raffles, Fun & Games

Entertainment will be provided on the night

Prizes for the best dressed Man, Lady and Couple and also Cheapest Best Dressed outfits (Op Shop Dockets to be produced)



Venue: Everglades Country Club

Dress: Formal Evening Wear - preferably purchased from an op shop or something dated from your wardrobe

Date & Time: Saturday 15th October at 7.00pm

Any profits raised will assist charities on the Central Coast

~ \$40 per head (Tables of ten) ~ RSVP 30th September ~ Tickets available from: Hope - 4369 8707 and Lyn - 0408 401 907

News



The Ettalong Beach CBD

Chamber renews call for CBD spending

Peninsula Chamber of Commerce president Mr Matthew Wales has called on Gosford Council to make provision in its recurrent budget for funding for CBD business development in the Peninsula town centres.

“Following Council’s decision earlier this year to not take any further action on the Special Business Rate, it has now become urgent for Council to allocate adequate funds for business development on the Peninsula,” Mr Wales said.

“We are in urgent need of a funding boost in street cleaning, maintenance and security in Woy Woy, Umina Beach and Ettalong Beach.

“Currently council only allocates approximately \$80,000 per annum for these activities which are currently under contract to the ACS

Group. “While ACS does a great job, only two staff members are rotated between the three town centres,” said Mr Wales.

“It is essential that full time staff are located in each town centre with adequate resources to ensure streets and footpaths are properly cleaned, street furniture and gardens adequately maintained and town security is effective.

“The current budget needs to be boosted to at least \$280,000 in order to do the job effectively.

“Anything less will not deliver the level and standard of service our business operators deserve.

“Funds are also desperately needed to promote our town centres, stage events and employ a full time Business Development Officer (BDO) dedicated to the Peninsula. “Businesses need a helping hand and a BDO with a fully resourced budget would

ensure that recommendations from the Peninsula Vision project are implemented including investment and job generating activities.”

Mr Wales said that Peninsula Chamber of Commerce had made a formal request to council for a recurrent budget of \$500,000 to provide these services through a CBD Committee.

“It’s tough in small business and council needs to get serious about supporting local retailers and our vibrant town centres in Woy Woy, Ettalong Beach and Umina Beach.

“Council makes funds available in the Gosford CBD and in Terrigal so the Peninsula deserves its fair share of the budget,” said Mr Wales.

“Without clean, safe, vibrant town centres, the local economy will decline and job opportunities vanish.

“It’s in council’s and the community’s interest to properly fund these important activities.

“If it does, it will reap the rewards.”

**Press release, September 21
Matthew Wales, Peninsula Chamber of Commerce**

Queen of Brisbane Water at oyster festival

The Peninsula Chamber of Commerce will hold a Queen of Brisbane Water event at this year’s Oyster Festival.

Central Coast businesses have been invited to enter a candidate in the event, which will help raise funds for the NSW Cancer Council’s Breast Cancer Challenge.

“The Cancer Council NSW is striving to reduce the impact of breast cancer by funding vital research into the causes of this disease, better treatments and by providing essential support services,” said festival committee chairperson Ms Debra Wales.

“Nearly everyone has a relative, a work colleague or a friend who has been affected by breast cancer and we would like to help the Cancer Council NSW through this festival.”

Each candidate will be asked to raise funds for the breast cancer challenge.

The candidate who raises the most funds by the final date will be crowned Miss Charity Queen with major prizes to be won.

The crowning of the queen of the festival and the charity queen will be announced at the Brisbane Water Festival Ball to be held on Friday, November 11, at the Everglades Country Club.

“We have some wonderful prizes lined up for the girls,” said Ms Wales.

“Tony Arico and his team from Travelworld Woy Woy have donated a Gold Coast holiday for two people for five nights including airfares and a \$500 travel voucher,” said Ms Wales.

“This is an exciting opportunity for any young lady to be part of and experience community involvement.

“They will be guided along the way with the support of Lynette Bailey who worked for Juno Daily Watkins for over 10 years.

“Lynette is offering her advice on grooming, make-up and deportment for each of the entrants so that they feel confident throughout the judging process,” said Ms Wales.

“All businesses that enter a candidate will have the opportunity to promote their business through the festival and to raise funds for a worthy cause.

The entry fee for each participant is \$100 and all candidates are required to have a sponsor.

For further information and an entry form and conditions, contact 4385 8429.

**Press release, September 28
Debra Wales,
Peninsula Chamber of Commerce**

Boat ramp upgrade pushed back

A series of mishaps and lack of funding have pushed back the upgrade of the Pretty Beach boat ramp, according to a report from Gosford Council’s director of city services Mr Stephen Glen.

The report was in response to a question from Cr Jim Macfadyen, who had asked for an update on the upgrade, stating that the matter had been advertised twice.

He questioned the need to advertise it a third time.

Cr Macfadyen said the issue had been going on for three years.

Mr Glen stated in the report that the development application (DA) for the upgrade had been described as being located in Killcare.

Mr Glen said the application was then readvertised to “avoid confusion” and to let the public know that site was actually located in Pretty Beach.

According to the report, however, due to the owner’s consent not being submitted with the

application, the DA was deemed invalid.

On August 16, Mr Glen said the owner had since provided owner’s consent and a fresh DA would be submitted immediately.

The report also stated that council had received \$200,000 from the NSW Maritime Authority of which about \$25,000 had been spent in development costs.

The cost to demolish and rebuild the existing boat ramp was estimated at \$250,000, a shortfall of \$75,000.

Mr Glen said an application for further funding would be submitted to the NSW Maritime Authority under the Maritime Infrastructure Program.

The report added that negotiations with officers from that Authority had indicated that it would assess the application as a priority so that construction planning could commence as soon as possible.

**Council agenda Q116, COR.32,
September 27**

Judith Hoste Art Teacher

Art classes held
Monday, Tuesday, Wednesday,
10am to 12pm and
1pm to 3pm
Tuesday evening
7pm to 9pm
Thursday
10am to 12pm
All Mediums Tutored
• Oils • Acrylics • Pastels •
• Watercolour • Drawing •
Class Fee
\$15.00 (an absent fee of \$2 is charged for missed lessons.)
BEGINNERS MOST WELCOME
ENQ: 4341 7302

The Unexpected Guest

“The Unexpected Guest” is written by Agatha Christie and directed by John Hickey.
The first Agatha Christie play to be performed by Woy Woy Little Theatre

	8pm	8pm	2pm
	Fri	Sat	Sun
October	21	22	23
	28	29	30
November	4	5	6

Also on November 5 at 2pm
The Peninsula Theatre
Cnr. Ocean Beach and
McMasters Rds, Woy Woy.
For bookings,
contact 4344 4737
between 10am to
2pm weekdays, from
Monday, October 10.

Beachside **r**asserie

Open 7 Days
Weekends all day
11.30am to 8.30pm
Lunch 12.00pm to 2.00pm

Chef at an outdoor
bar. Group bookings.

Wild Food Night \$11.50

Live entertainment
every Sunday from 12 noon

4341 0255

BONDIES AT THE BAY

Fish & Chips, Hamburgers, Fresh Sandwiches,
Coffee & Cakes, Sat & Sun Breakfast From 8.30am

Open 7 days for lunch or dinner
Eat in or Takeaway
Phone Orders Welcome

4363 1545
7 Sorrento Road Empire Bay
Functions Catered For

Australia without the States

Can anyone imagine Australia without the States?

A country with one national government, and just one other tier of government – either local or regional?

There are already several community organisations that think exactly that way and their time has come.

They are organising a conference on the Central Coast, the 12th Shed-a-Tier Conference, on Saturday and Sunday, October 15 and 16, in the Mingara Recreational Club at Tumbi Umbi.

There will be several excellent speakers and plenty of opportunity to have your say as well.

No doubt the tide is changing.

Even several Ministers in the Howard Government have urged national approaches in the health, industrial relations, education, transport and security areas, to

Forum

mention a few only.

Can Australia organise its government functions more effectively now that we have so much better communications and transport systems compared to 1901 when federation was forged?

Of course we can.

Can we replace the highly centralised state governments, suffering from inherent large city biases, with a superior system of decentralisation?

Sure, and we can amend or rewrite Australia's Constitution to suit today's society, rather than continue to be ruled from the grave of Colonial times.

That is what democracy is about.

With inquiries, phone 4341 5170.

Klaas Woldring, Pearl Beach

Mr Wales maintains in "Give fast ships every chance" (Peninsula News, September 19) that the company has done some carefully research.

I wonder what he means by this.

My research, mostly speaking to master mariners and a Fellow of the Australian Institute of Navigation, tells me that a fast reliable commuter ferry service from Ettalong to Circular Quay is completely unviable.

You either need an enormous boat to withstand the open seas, which will be unable to get in and berth at either end or you have a small vessel which can berth but which will not be able to withstand the open seas.

Research collected by the Manly Hydraulics Laboratory suggests that with wave heights of 2.5m occurring more than 15 per cent of the time, it would not be safe

Forum

for any ferry, similar to the Sydney Ferries' catamarans in use today, to cross the open sea.

Dr Peter Cowell, from the Marine Institute at Sydney University, maintains that the whole Peninsula is unstable.

He, along with other scientists, believes that the planet is warming up and that the seas are rising.

He has shown modelling which demonstrates what is likely to happen to Bondi and Manly.

The recent Tasmanian study showed that for every 90cm rise in sea level next to a flat sand-plain, such as the Peninsula, then water could be expected to cross 90m of land. That is nearly the length of two swimming pools.

This water would reach across the Esplanade, which is another reason why it is so silly for people

to insist on cutting down the vegetation along the foreshore.

It is dangerous to tamper with the foreshore of the Peninsula.

Many of the reports authorised by the local authorities such as the Patterson Britten Report 2000, mention a litany of mistakes made by the authorities over the decades. Each new report has to try to rectify the previous mistakes, all no doubt made with good intentions.

We now have parts of The Esplanade being undermined and Lance Webb Reserve in a dangerous state from erosion.

It has all been an expensive exercise for the public and yet we see another body of people wanting to tamper yet again.

No one can plead ignorance now about these matters, not if they have done their research thoroughly.

Margaret Lund, Woy Woy Bay

Speed cameras for tailgaters

The NRMA recently found that rear end collisions were the most common type of crash on the F3 and they believed it this was because too many people are travelling too close to the car in front.

Maybe the RTA should look at a few minor modifications to the programming in the new speed camera so it also detects drivers tailgating.

Have it set so that any vehicle

Forum

that is travelling with a gap less than three seconds to the car in front gets fined.

It would have the added bonus of reducing the traffic on the F3 as by the end of the first month there would be only be a handful of people left with their licenses.

Ian Lawrence, Umina

World-class facility

Near on three years have passed since the Peninsula was deprived of a public swimming and hydrotherapy pool, and longer for an indoor sport arena.

In those years, there have been many issues raised during the planning and construction of the new leisure centre, including the sound-proofing, traffic arrangements and the funding controversy to name a few.

The time has come to put behind such acrimony and enjoy the benefits of this world-class facility.

The Peninsula has long been

Forum

short-changed on infrastructure.

Now we have a sporting and leisure centre to be proud of.

This new facility will be the envy of the Coast with its varied activities, natural lighting and state of the art, air and water filtration.

Issues with the centre can still be followed through.

Hopefully the community will get behind this grand facility and the suggested economic shortfall will not eventuate.

Mark Ellis, Woy Woy

Dune destruction is not beautiful

It may be true as Cr Hale, the Ettalong Beach Memorial Club general manager, says: "At no point has the Club ever suggested, or proposed, that the beach or the foreshore be enclosed and certainly not for the sole benefit of the Club."

But many viewed the original model and advertisements for the development which actually had

Forum

The Esplanade closed with direct access to the beach from the club.

Whether it was for the sole benefit of the club is neither here nor there.

The point was the closure of the road for the benefit of the resort was advocated yet constantly denied.

Cr Hale goes onto to say "It

has always been the position of the Club that the foreshore should be restored, beautified and upgraded."

My idea of restored and beautified is not the destruction of the dunal vegetation and the placement of pretty shrubs and a viewing deck, or the removal of public open space for private profit advocated by Fast Ships and its proponents.

M.Ellis, Woy Woy

Why do we need ferry terminal?

After reading the augments for and against the Fast Ferry terminal proposal, I get the feeling that the general public is not told all the facts and information is been held back for some reason or another.

As far as the fast ferry goes the numbers simply just don't add up.

The number of trips has been stated as four return trips per day carrying 400 passengers per trip for a total of 3200 people per day.

At a guess a fare one way would have to be \$30 to \$50 to cover the fuel, crew, and so on, to make

Forum

it feasible, which to me cannot compete with rail fares from Woy Woy. The majority of Central Coast commuters that work in Sydney are ordinary people who may not be able to afford to live in Sydney.

There is also a large retirement group that live on the Central Coast and the cost for them to use the rail system is only \$2.50 return so I doubt if they would use the Fast Ferry.

It is obvious that 3200 people living in Ettalong would not use the ferry on a daily basis so that

means the people will come from somewhere else.

If they drive to the ferry terminal then where will they all park their cars?

My bet is that the ferry was not intended as a commuter ferry and that it will be used for overseas tourists for a days visit, included in their itinerary, paid for overseas, to have lunch at Ettalong and then return to Sydney.

If the Fast Ferry is not going ahead, why do we need a large ugly terminal built on our pristine shores?

William Bollard, Daleys Point

"Something to Celebrate?"

COMPANY RELOCATING?
COMPANY BIRTHDAY?

CONTACT OUR
FEATURES
CONSULTANT

Peninsula News
Community Access

Ph: 4325 7369

For the latest news on what's happening on the Peninsula see...

www.PeninsulaNews.asn.au

• News • Education • Sport • Arts • Health • Forum • Peninsula Diary • Web directory •

The Peninsula newspaper's website, a comprehensive collection of editions published to date

Classifieds

Incorporating a trades directory and public notice advertisements
Peninsula News Classifieds aims to help community groups and businesses reach the Peninsula community at the lowest possible price.

BUSINESS ADVERTISEMENTS
 cost only \$24 plus GST for 3 cms, and will be working for you in your local community for **TWO WEEKS**

COMMUNITY ADVERTISEMENTS
 Receive a 30% discount
Phone: 4325 7369
Fax: 4325 7362
 E-mail: mail@peninsulanews.asn.com

Antenna Services

- Improved Reception
- Extra TV & Phone Outlets
- Tuning of TV/VCR
- Digital Installations
- Prompt Reliable Service

Bruce Ridges
4342 0110
Combined Connections

Appliances

Brian's Appliances
 *Fridges*Washers*Driers
 *Dishwashers*Stoves
 *Hotwater Systems.
 Sales*Services*Spares
'We will come to you'
 Ph: 4342 8888
Now At
 15 Charlton St
 Woy Woy

Baby Sitting

Nanny/Baby Sitter
 Woy Woy Area
 11 years Nannying experience.
 First Aid Certificate
 References
Call Kim on
0405 271 644

Car Pooling

Would you like to reduce your commuting cost? Share the long drive? Place your details here for only \$20 and we'll run it for 3 months or 'til you've found somebody!
Call 4325 7369

Travel from Peninsula to West Ryde, Carlingford, Eastwood, Epping Area
 Monday - Thursday
 Call
 Sheelagh - 0419 609 942

Cash Registers

• BRAYSHAW • Office Machines
 • Sales
 • Service
 • Supplies
4342 8666

Computers

Throwing away old computers or computer hardware?
Contact Lyle on 0431 068 801 for recycling. FREE pickup!

Dance


Behind the Veil
 Belly Dance Classes
 Woy Woy
Also
Liven up your next function with tasteful and elegant entertainment
 Ph: 4341 - 7333

Death Notices

Parry, Phyllis
 Dearly beloved wife of Ron, cherished mother of Christine and Kenneth, much loved grandmother of Dana, Shey and Siain.
 Twin Towns Funerals
 Tweed Heads 07 5599 1800

Electricians

PREMIER Electrical Services



* 10% Disc. seniors card
Dean Slattery:
4344 7335
Mob: 0419 803071

For Sale

TX3 Laser



GREAT FUEL ECONOMY
 15" BSA Mags, New Custom Black & Grey Velour Interior with new Plush Pile Black Carpet, 2.5" sports exhaust, Reconditioned engine 40k km, Pioneer CD player, 3 point Alarm, Long Rego Aug 29/06, Spare set of original TX3 alloy wheels, Great First Car
\$3500^{ono}
Call 0423 163 906

Handyman

Honest, reliable 30 years experience. Own tools, odd jobs, can fix, make, maintain anything
Painting, Pressure Cleaning, Paving, Fencing, Spray Painting
 No Job Too Small. Pensioner Discount.
Barry 4340 0546 or 0401 559 414

Lawn Mowing

LAWN MOWING
 ALL LAWN & GARDEN SERVICES
 GUTTERS CLEARED
 POOLS CLEANED
 BINS CLEANED
 FREE QUOTES
 PENSIONER DISCOUNTS
 FRIENDLY AFFORDABLE SERVICE BY A PENINSULA LOCAL
PHONE RYAN
0415 350 453

Music Tuition

Guitar & Mandolin
 All Ages welcome. Gain confidence and achieve results
Frank Russell
 4342 9099 or
 0417 456 929

Guitar Lessons
 Beginner to intermediate
Acoustic & Electric
Most styles, all ages
 Call Justin on
 4340 2385 or
 0439 589 426

Pensioner Accomodation

Point Clare Retirement Village - Self care unit - would suit aged Pensioner
\$104.80/week.
 Conditions apply, Please apply between 9am and 5pm, Monday to Friday
4324 2068

Pest Control

SCOTT'S PEST SOLUTIONS
 Thorough Prof', Quality Mngt, Lic & Ins, All Areas 7 Days
Pens & Senr Disc
4342 5981 or 0418 255 680

Plumbers

B & L IVANOFF L/N L2439
 Licensed Plumber & Drainer
All general plumbing and repair work
 No job too small.
 Free quotes.
4341 5975

Local to your Area

All aspects of plumbing
 Roofing, Gutters and much more.
 Repairs and New Installations
 Call Kevin
0438 819 053
 Free Quotes
 Competitive pricing
lic no 161824C

Mark Walker Plumbing
(Lic. 25262C)
All Plumbing and Maintenance work
 Free Quotes - Pensioner Discounts
4342 6299 or
0418 449 801

Positions Vacant

Looking for P/T - F/T Income?
 • Riding the Health & Wellness Trend.
 • Personal Franchise (no boss).
 • Free local training and support.
 • Control your income & quality of life.
 Call James or Ana on 4342 9425 for a Free Information Pack.
www.wealthchoices.net

ABLE TO START NOW? COMPUTER/MAIL ORDER
\$500 TO \$1500 P/T
9432 4389
WWW.RETIREYOUNG.COM.AU

Casual Dance Instructors Wanted Wyoming

Ph: Stephen
4342 7672

Mingaletta Aboriginal Corp
 Applications in Writing are invited for the position of **Aboriginal Community Development Officer** Mingaletta ATSC based on the Woy Woy Peninsula.
 Remuneration Package: Valued at up to \$48,370 p.a. (Salary \$43,833) including employer's contribution superannuation, annual leave loading, fuel allowance and use of mobile phone.
 For more information and Applications please Contact: Ray McMinn, H: 4344 7714 or Wk: 9987 3909. Position Package will be posted

Property Maintenance

Decking repairs, painting, tiling, gyprocking, waterproofing and lots more
 No jobs over \$1000
 Free quotes on the Coast
Ph: 0439 589 426
 or 4340 2385

Public Notices

Volunteers Wanted
 The Lifeline Shop at Umina is seeking shop assistant volunteers.
 If you are interested please contact the office 4323 6105 for an application form and interview time

Woy Woy Peninsula Lions Club CAR BOOT SALE
 Sunday, 30 October 8am to 1pm
 Great variety of stalls ~ BBQ, Tea & Coffee. Vendors Welcome ~ \$10 per car
 Cnr. Ocean Beach Road and Erina St. Woy Woy
 Always Last Sunday
More Details...
Elmo 4341 4151 - Hope 4369 9817

Public Notices

Calling all Dancers
 Enjoy an Australian bush dance and be entertained by
Bush Fire
 at 8.00pm - Midnight
October 8
 at East Gosford
 Progress Hall
 No experience necessary, just a desire to have fun.
 \$15 inc Supper
 Phone: 4344 6484

The Troubadour Acoustic Music Club
 brings musicians, singers, poets and story tellers to the Central Coast to perform with and entertain local residents.
 The club next meets on **Sunday October 9** at the **CWA Hall** (opposite Fishermans Wharf) Woy Woy
 This month's special guests are
Lenore Bower & Alan Kidd
 All are welcome.
 Starts 1.30pm
 Entry \$10 inc afternoon tea.
 Enquiries: 4342 9099

Publishing

Save \$\$\$ On Printing and Publishing Costs
If you are looking at printing 1000 or more copies of a publication which is no smaller than A4, call Ducks' Crossing Publications....., we'll save you \$\$\$\$\$.
Mono or Colour
 Ph. 4322 6947 for a free quote.

Pumps and Bores

Bore water pump & spear point installation, maintenance, repairs & modifications.
 PVC pipe & spear points installed that **never need cleaning.**
 Ph John Woolley Lic. No. DL1664
 Phone: 4342 2024

Re-upholstery

STRATA LOUNGES
 52 Memorial Ave, Blackwall.
Ph: 4342 8188
 Free quotes, pick up & delivery.
 We have a huge range of fabrics to choose from.

Roofing

All Roofing Repairs Tile & Metal
 * Emergency Repair *
 * Free Quotes *
 * Pensioner Discounts *
 * Reliable and Friendly Service *
 * 25 years Expeiriance *
B.R. Gillard Roofing
Lic. 62917C
 Ph: 4363 2107
 or 0408 169 234

Security

Alarm Systems
 For a full range of security services, try the locals
ALARMS PATROLS - GUARDS ALLPOINT SECURITY
 Ph: 4322 1713
 Fax: 4322 1753

Stoves

Stoves, Ovens and Electric Hot Water Systems Service and Spare Parts
(Most Brands)
Jayars,
 13-15 Mutu St
 Woy Woy
4342 3538

Tiling

Wall and Floor TILER
 Residential and Commercial
Kitchens, Living Areas, Bedrooms, Bathrooms, Laundries, Patios, Steps, Verandahs
 Give Justin a call on
 4340 2385 or
 0439 589 426

HSC projects examined

The examination of major works and projects by HSC students at Brisbane Water Secondary College senior campus at Woy Woy ended last week.

This marked the end of a period of hard work by students and teachers at the campus, according to principal Mr David Beattie.

"Many of our students do a practical project as a part of their HSC," Mr Beattie said.

"These range from performances in music and drama, to artworks and projects in the technology and woodwork areas.

"The students work on them through their Year 12 course and the projects count for up to 60 per cent of the marks in the HSC."

Mr Beattie said that four students had experienced outstanding success with their projects being nominated for State-wide exhibition.

In Design and Technology, senior student Sarah Harvey had her major project, a children's book,

nominated for Designtech.

Mr Beattie said: "This exhibition is held at the Powerhouse Museum and then tours regional museums around NSW.

"The exhibition is for the best of the best projects."

In drama, one of the group performances was also selected for Onstage, which is the presentation of the best drama works at the Seymour Theatre in Sydney.

Alex Beaton, Daniel Stone, Sarah Harvey and Amanda Lilleyman devised and performed the work, "The Half Glass".

"Selection at State level is also a very good indicator that students have received full marks for that section of their HSC," Mr Beattie said.

"Congratulations go to the students and their teachers, Mrs Curry and Mr Faulds for the enormous amount of work that they have put into those projects," Mr Beattie said.

Press release, September 22
Kay Podmore, Brisbane Water
Secondary College



Brisbane Water Secondary College band "Emanon"

Brackets debut for students

Three Brisbane Water Secondary College senior campus students made their Brackets and Jam debut at Kincumber Mountain Reserve on Friday, September 16.

The performers from "Emanon" are Year 11 drummer Ellie Plummer, Year 11 acoustic guitarist James Luke and Year 12 vocalist Tessa Nuku.

The performers have been developing and showcasing their performance and recording skills over a couple of years through the Kool Skools Competitions and

recently the school's Variety Night and Central Coast Showcase.

Ellie, James, and Tessa, relative newcomers to the Brackets and Jam scene, performed two original songs including "Soul Vacation" and "What You Get" on the night.

Tessa, after successfully completing a round of auditions earlier in the year, has been accepted into Phase 1 of the Talent Development Project.

This program, supported by the Education Department trains singers and songwriters in NSW Public Schools for a career in the entertainment industry.

The program addresses all aspects of the industry and utilises the expertise and skills of high profile performers and mentors through the sponsorship of businesses such as Macquarie Bank, Sony Foundation, Clubs NSW and APRA.

Tessa is also performing in the School Spectacular as a featured soloist in November.

Ellie, James and Tessa will also be performing together at CoastFest later this month.

Press release, September 20

Numeracy results surpass literacy

Brisbane Water Secondary College Umina campus numeracy results have surpassed its literacy results earlier in the year.

Earlier this year, Year 7 and 8 Brisbane Water Secondary College Umina campus students showed a rate of improvement in the literacy tests such that the percentage of its students in the highest band of performance in reading went from 27 per cent in Year 7 last year to 49 per cent in Year 8 this year.

Principal Mr Frank Gasper said the numeracy results were by far the best ever achieved by the school.

The rate of improvement from Year 7 to Year 8 exceeded the

rate of growth for all schools in the Hunter and Central Coast region and even the rate of growth for the state, according to Mr Gasper.

"This placed us among the highest performing schools in terms of growth from Year 7 to Year 8," Mr Gasper said.

"A lot of work has gone into achieving this result.

"Our teaching teams and the maths faculty led by Mr Gilchrist of Year 7 in 2004 designed programs that would address any weaknesses that were identified.

"It is great to see the rewards so clearly demonstrated in 2005."

Newsletter, September 19
Frank Gasper, Brisbane Water
Secondary College

School receives Landcare grant

Students from Pretty Beach Public School have received a Landcare grant to undertake an environmental project at Pretty Beach.

Pretty Beach Public School has used the grant to purchase a Junior Water Watch Kit to be used in the Brisbane Waters across the road from the school.

The students have started to monitor and assess environmental

impacts from the school and surrounding environs by testing turbidity, pH, temperature and using dip nets, to look at the sea life hiding amongst the seagrass.

Principal Ms Vicki Redrup said that the grant would be a major boost for the school's environmental program.

"The Mitre 10 Junior Landcare Grants Program will be a huge help to schools who normally could

not afford to get students involved in environmental projects, and working on the projects is the best way to learn," Ms Redrup said.

Further information about the grants program is available on the Landcare Australia website at www.landcareaustralia.com.au or by contacting Landcare Australia on 1800 151 105.

Press release, September 19
Jenette Bringolf,
Pretty Beach Public School

PC/C 'PUMP' Dance Parties PC/C
(10-16 yr olds)
Umina Beach PCYC
When: 14/10, 11/11 and 9/12/05.
Time: 7-10pm
Where: 101 Osborne Ave, UMINA BEACH.
Ph: 4344 7851
How Much: \$10 = Admission + a Drink + a Bag of Chips!
NO Drugs, Alcohol, Gum, or Passouts.
What Else? 6000 song playlist booming through a State of the Art sound/audio lighting system and...
PRIZES!!

COMING SOON!!!!!!!
YOUTH ENTERTAINMENT NIGHTS
Movies, Big Screen X BOX, BBQ, Pool,
Air Hockey & more - Comps. & Prizes!
28/10/05 and 25/11/05 - 6pm-9pm monthly
Free Entry and Passouts are okay - Ph: 4344 7851

Umina wins debating final

The Umina Public School debating team recently defeated Ettalong in the final round of the Peninsula Debating Competition.

The debating team of Holly Austine, Olivia Brown, Jack Walters and Ellen McCracken competed in the final round of the Competition on September 15.

A teacher at the school said the team performed very well to win the debate against Ettalong.

Newsletter, September 20
Umina Public School

Kip McGrath
EDUCATION
CENTRES

Professional Tuition, Kinder - Year 10

- Specialists in basic skills
- Improve school results
- Raise self-esteem
- Individual education programs
- Qualified teachers
- MATHS
- ENGLISH
- READING
- SPELLING

**Now Enrolling
Term 4**

David Hosford UMINA 4344 5042

Sport & Education

Swimming inquiries

The Peninsula Leisure Centre has been flooded with inquiries about its Learn to Swim program, according to Gosford Council's program co-ordinator Mr Terry Webster.

Mr Webster said: "We have been inundated with inquiries from parents who are very keen to enrol their children into the centre for our Learn to Swim programs."

"The Central Coast holds one of the highest incident rates of drowning throughout NSW, and we are only too pleased to be providing the community with a range of activities to promote a fun, safe and healthy lifestyle."

For more information, contact the Peninsula Leisure Centre on 4325 8123.

Press release, September 19
Breearna Sharp, Gosford Council

Under-15s take on Oldies' team

Woy Woy Rugby League players from the Under-15.1s, who were the runners up in this year's Grand Final, will take on a team of coaches, trainers and committee at their presentation picnic on October 23.

The Golden Oldies team formed to be part of the fun match at the presentation day at Woy Woy Oval.

Club president Geoff Staunton who organised the match said "The Golden Oldie Team has been training weekly for the past month.

"We don't know how we will go, however we do not want the Under-15s to think we are a walk over"

Mr Uptin said there was a real bond between all the boys, most of whom have played together since the Under-10s winning that grand final and making it to most grand finals along the way.

"They were there on grand final day, giving support and cheering on both the Under-10 teams.

"The younger players looked on in awe as the older boys prior to the match gave them a stirring rendition of The Want To Win.

"It was a very proud moment for the club as a whole, to see the boys at this age, along with about 100 other club supporters, keen to be there for the younger players."

The presentation day at Woy Woy Oval will commence at 1pm.

Other events on the day will include a touch football match with the Under-13s against the women of the club, three legged races, with an older player buddying up with a younger player, sack races, and egg and spoon races involving the whole of the club.

The canteen will not be open and no alcohol will be allowed.

"Pack a rug, picnic basket and be prepared for fun and laughter as well as the presentation of this year's trophies," Ms Uptin said.

Press release, September 27
Anita Uptin, Woy Woy Rugby League club



Woy Woy Public School "jump off"

Jump Rope for Heart

The students at Woy Woy South Public School participated in the Jump Rope for Heart Jump Off on Friday, September 16.

The students had been preparing for eight weeks, according to publicity officer Mr Carl Krucler.

"This event not only showed why skipping your way to heart health is so popular, but it also raised money for the Heart Foundation," Mr Krucler said.

Students sought donations for the Heart Foundation from friends, family and neighbours.

As well as promoting the health of young Australians, Jump Rope for Heart raises significant amounts of money to support the Heart Foundation's fight against heart disease and stroke.

Press release, September 26
Carl Krucler, Woy Woy South Public School

Talking and listening

Year 6 students at St John the Baptist Catholic Primary school have focused on developing and fine tuning their listening and talking skills as part of the literacy curriculum this term, according to family liaison officer Ms Beth Riley.

They have been rewarded with Sophie Stratton winning the Diocesan public speaking finals.

"All students prepared and presented a speech based on a chosen topic," Mr Riley said.

"These speeches were presented to their peers, principal and other staff members. "The quality of these speeches was

quite outstanding."

Of the 53 students, 12 were short-listed and asked to present their speeches to another audience, consisting of members from the community with experience adjudicating speeches.

"Two students were chosen from this experience to represent our school at Central Coast Cluster Public Speaking," Ms Riley said.

"Sophie Stratton and Gregory Auouad spoke with confidence, animation and expression.

"The content of their speeches was concise, relevant and interesting.

"They were both awarded a place which put them into the Diocesan finals that were held at Berowra.

"Once again they presented their speeches and in addition an impromptu speech.

"The standard of speeches on the night was extremely high.

"We were very proud and excited when Sophie was announced as the winner on the night."

Press release, September 20
Beth Riley, St John The Baptist Primary School

A Celebration of Music, Art & Culture

Coastfest

2005

For all details and program - visit our website
www.coastfest.org.au

Gosford Showground - 21/22/23 Oct. 2005

Peninsula News
Community Access

ONLINE

- @ The Peninsula News Website opens up a whole new opportunity for advertising.
- @ Reach new markets with the help of the Peninsula News Online Publication.
- @ Your adverts appear both in print and online, accessible from anywhere in the world.
- @ To take advantage of this opportunity, contact us.

Ph: 4325 7369 Fax: 4325 7362
Email: mail@peninsulanews.asn.au

www.peninsulanews.asn.au

Bring in your **GOOD STUFF** and help spread good words

www.peninsulanews.asn.au



Umina United's premier league one team, before the match

Peninsula makes soccer grand finals

The Peninsula was represented in four out of five of the men's and women's Premier League Football soccer grand finals played at Central Coast Stadium last weekend.

Southern and Ettalong United Soccer Club had two teams representing them, both in the men's Premier League Two division, one being First Grade and the other Reserve Grade.

Woy Woy Soccer Club was represented by their women's Premier League team.

Umina United Soccer Club was represented by its men's Premier League One division, First Grade team

In a historic arrangement with the Central Coast Soccer Association, radio 2CCC-FM broadcast its Sunday Sports Wrap live at Central Coast Stadium during the Central Coast Premier League One grand final between The Entrance and Umina United.

The "Sunday Sports Wrap" gave live updates of the match during its show and featured an interview with Central Coast Soccer Association's general manager Mr Michael Keech at half time.

The interview was broadcast over the stadium's PA for those at the game.

Continued from small front page

The results of the men's Premier League Two matches were Southern and Ettalong United 1, Ourimbah University 4 in the first

grade and Southern and Ettalong United 4, Avoca 2 in the reserve grade.

Both first grade teams have been promoted to Premier League One for 2006.

The women's Premier League grand final finished with Woy Woy as winners, the score being Woy Woy 3, Ourimbah University 2.

This was the first time in 13 years that the Woy Woy women's team has won the grand final and did so against all expectations, having lost all three competition matches against both their grand final opponent and the more fancied Kincumber team.

However, during the finals series, they eliminated minor premiers Kincumber with a score of 5 to 1.

The match was marred by an injury to Woy Woy defender Tracey Hillock who appeared to be seriously injured and could not be moved until an ambulance arrived.

This meant that the match finished 14 minutes early as there is no stoppage time added in women's football.

The men's Premier League One First Grade grand final was won by The Entrance 3, Umina United 2, with all five goals having been scored before half time.

After having finished fourth during the season, Umina had to win two elimination finals to get to the grand final but its dream run ended last Sunday, September 25.

Cec Bucello, September 29



"Big Splash" winners christen the pool at the Peninsula Leisure Centre

New pool is christened

Peninsula Leisure Centre's 50 metre pool was christened on Sunday, September 25, with 100 raffle winners being the first to officially enter the pool.

The raffle, for 12 months' free pool entry, was drawn recently by Gosford mayor Cr Malcolm Brooks.

With a countdown by Cr Brooks, the 100 winners lined up on the edge of the pool and simultaneously took a jump into the pool.

There were people of all ages splashing around in the pool enjoying themselves, Cr Brooks said.

The 100 winners were in the pool when Cr Brooks announced the winner of a lifetime pass was Norma Bailey from Woy Woy.

Ms Bailey is a grandmother who has lived in Woy Woy for 45 years.

"It's only a 10 minutes walk for me to the new centre and I love aquarobics," Ms Bailey said.

"I used to do aquarobics at the old Woy Woy pool.

"I'm so excited to come and use the new facilities."

She said she suffered from arthritis for which the warm water pool would be useful.

Nearly \$15,000 of funds raised through the raffle was shared amongst the five beneficiaries including the Webb Centre, Peninsula Before and After School Care, the Early Intervention and Special Education of Woy Woy

Primary School, the Special Support Unit Brisbane Water Secondary College Umina Campus and Woy Woy Community Aged Care.

The centre will officially open to the public from October 29 when the centre celebrates its Community Open Day.

Entry will be free on the day, open to everyone, and there will be plenty of entertainment and activities.

With any inquiries, contact 4325 8123.

**Press release, September 28
Breearna Sharp, Gosford Council**



Woy Woy Soccer Club Women's Premier League champions

PC/C **'PUMP' GYM** PC/C

Weights ~ Boxing

Circuit Box ~ General Circuit

'PUMPing' ('Rocking') Gym

on Monday Nights.

No Frills/Hassles or Contracts

Monday - Thursday's	9.00am-12noon	3.00pm-8:00pm
Friday	9.00am-12noon	3.00pm-6:00pm
Saturdays	9.00am-12noon	

Cost

To join PCYC = \$5 under 18's and \$10 over 18's

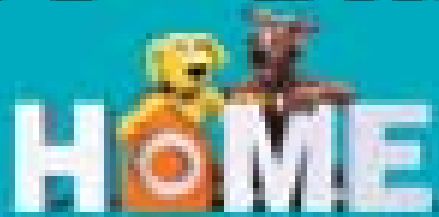
Single Gym Session= \$5 under 18's and \$7 over 18's

Weekly Gym Session= \$10 under 18's and \$15 over 18's

You can find out more by speaking to Gym staff, staff at the front counter or by phoning us on;

Ph: 4344 7851 - UMINA PCYC

CAMPBELL BUILDING MATERIALS 10TH BIRTHDAY SALE



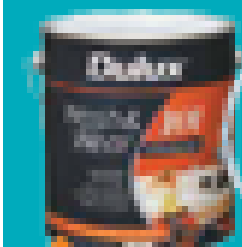
WIN \$10,000.00

WORTH OF TRAVEL TO ANYWHERE IN THE WORLD

In conjunction with
TONY ARICO'S TEAM AT

travelworld
DEEPWATER PLAZA, WOY WOY

Relax, Go Fishing with Dulux



Buy Dulux paint in a 2.5 litre or 5 litre tin and receive a FREE fishing rod and reel. Offer valid while stocks last. See in store.



Buy Dulux paint in a 2.5 litre or 5 litre tin and receive a FREE fishing bucket and net. Offer valid while stocks last. See in store.

FEAST WATSON
Receive your
FREE BBQ Apron

When you purchase 4 or more of Feast Watson Cooking Oil in 5 litre tins.

FREE BBQ APRON

Wagner Airless Sprayer - 10 litre with
Ezzy Tri-Fl-Tank

\$129

BONUS

TOP DOG DEAL

Home Interiors Acrylic - Low Sheen or Satin 5 Litre. **\$47.75** Ea.

BONUS

Painters and Decorators Apron - Low Sheen or Satin 5 Litre and brush & roller. Offer valid while stocks last.

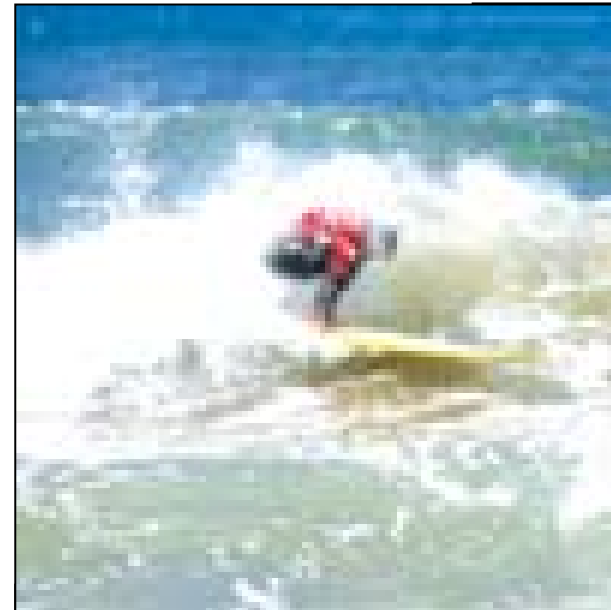
SPEND \$30 OR MORE INSTORE AND RECEIVE 1 TICKET

Peninsula News

Community Access

Edition 127

4 October 2005



Malibu interclub surf club action (top left) Gary Sing, (top right) Bett Wakelin and (bottom left) Matty Sing

Money raised

The Ocean Beach Malibu Club recently raised \$4500 for Gosford Hospital Children's Ward.

The Ocean Beach Malibu Club and the Shelly Beach Malibu Club held their annual interclub competition on Sunday, September 18, with all proceeds from

the day donated to radio station 2GO's Give Me 5 For Kids appeal.

Ocean Beach retained the trophy with a 97 to 83 victory.

Press release, September 20
Lisa Lent

PENINSULA MUSIC

Guitars, Amplifiers, Keyboards,
Music Books, Percussion, Accessories
World and Folk Music Instruments

38 George Street, Woy Woy
Ph: 4342 9099